



**TRILOBITE TESTING, INC.**

# DRILL STEM TEST REPORT

Shakespeare Oil Co. Inc

**34-16s-34w Scott Co. KS**

202 W. Main St.  
Salem IL 62881

**Janzen # 1-34**

Job Ticket: 49080

**DST#: 2**

ATTN: Steve Davis

Test Start: 2013.07.10 @ 01:48:00

## GENERAL INFORMATION:

Formation: **Marmaton**

Deviated: No Whipstock: ft (KB)

Time Tool Opened: 04:05:25

Time Test Ended: 09:51:54

Test Type: Conventional Bottom Hole (Reset)

Tester: Will MacLean

Unit No: 58

**Interval: 4466.00 ft (KB) To 4488.00 ft (KB) (TVD)**

Reference Elevations: 3126.00 ft (KB)

Total Depth: 4488.00 ft (KB) (TVD)

3119.00 ft (CF)

Hole Diameter: 7.88 inches Hole Condition: Good

KB to GR/CF: 7.00 ft

**Serial #: 8674**

**Inside**

Press @ Run Depth: 188.37 psig @ 4468.00 ft (KB)

Capacity: 8000.00 psig

Start Date: 2013.07.10

End Date:

2013.07.10

Last Calib.:

2013.07.10

Start Time: 01:48:00

End Time:

09:51:54

Time On Btm:

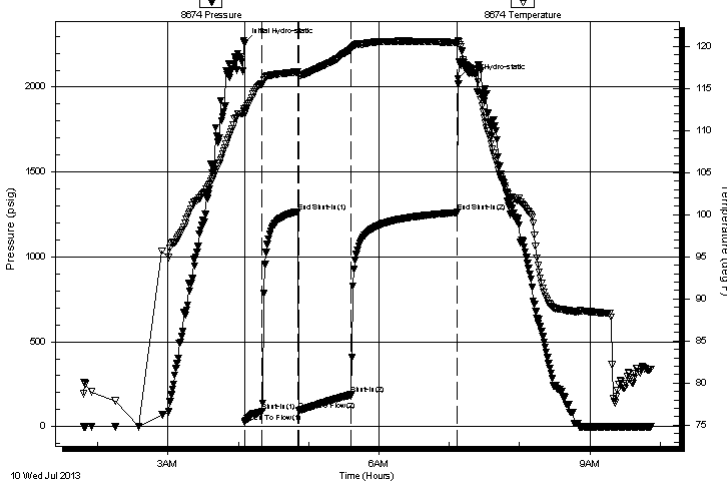
2013.07.10 @ 04:05:10

Time Off Btm:

2013.07.10 @ 07:07:24

**TEST COMMENT:** IF- Surface Blow Built to BOB in 12 1/2 min  
IS- Weak Surface Blow in 18 min  
FF- Surface Blow Built to BOB in 12 min  
FS- Weak Surface Blow in 10 min

Pressure vs. Time



## PRESSURE SUMMARY

Time (Min.)	Pressure (psig)	Temp (deg F)	Annotation
0	2260.76	112.54	Initial Hydro-static
1	25.70	111.91	Open To Flow (1)
15	89.09	115.53	Shut-In(1)
46	1266.26	116.96	End Shut-In(1)
47	96.40	116.58	Open To Flow (2)
91	188.37	119.67	Shut-In(2)
182	1261.96	120.44	End Shut-In(2)
183	2050.33	120.70	Final Hydro-static

## Recovery

Length (ft)	Description	Volume (bbl)
120.00	GOCM 17%g 38%oil 45%m	0.59
62.00	GMCO 10%g 30%m 60%oil	0.62
124.00	MCGO 22%m 30%g 48%oil	1.74
124.00	MCGO 18%m 24%g 58%oil	1.74
77.00	GO 6%g 94%oil	1.08
0.00	543' of GIP	0.00

## Gas Rates

Choke (inches)	Pressure (psig)	Gas Rate (Mcf/d)

\* Recovery from multiple tests



**TRILOBITE  
TESTING, INC.**

# DRILL STEM TEST REPORT

**FLUID SUMMARY**

Shakespeare Oil Co. Inc

**34-16s-34w Scott Co. KS**

202 W. Main St.  
Salem IL 62881

**Janzen # 1-34**

Job Ticket: 49080

**DST#: 2**

ATTN: Steve Davis

Test Start: 2013.07.10 @ 01:48:00

## Mud and Cushion Information

Mud Type: Gel Chem

Cushion Type:

Oil API:

26 deg API

Mud Weight: 9.00 lb/gal

Cushion Length:

ft

Water Salinity:

ppm

Viscosity: 47.00 sec/qt

Cushion Volume:

bbf

Water Loss: 10.35 in<sup>3</sup>

Gas Cushion Type:

Resistivity: ohm.m

Gas Cushion Pressure:

psig

Salinity: 7500.00 ppm

Filter Cake: 1.00 inches

## Recovery Information

Recovery Table

Length ft	Description	Volume bbf
120.00	GOCM 17%g 38%oil 45%m	0.590
62.00	GMCO 10%g 30%m 60%oil	0.624
124.00	MCGO 22%m 30%g 48%oil	1.739
124.00	MCGO 18%m 24%g 58%oil	1.739
77.00	GO 6%g 94%oil	1.080
0.00	543' of GIP	0.000

Total Length: 507.00 ft      Total Volume: 5.772 bbf

Num Fluid Samples: 0

Num Gas Bombs: 0

Serial #:

Laboratory Name:

Laboratory Location:

Recovery Comments: API is 28 @ 80f = 26

Serial #: 8674

Inside

Shakespeare Oil Co. Inc

Janzen #1-34

DST Test Number: 2

