



**TRILOBITE  
TESTING, INC.**

# DRILL STEM TEST REPORT

Shakespeare Oil Co. Inc

**34-16s-34w Scott Co. KS**

202 W. Main St.  
Salem IL 62881

**Janzen # 1-34**

Job Ticket: 49081

**DST#: 3**

ATTN: Steve Davis

Test Start: 2013.07.10 @ 21:50:00

## GENERAL INFORMATION:

Formation: **Marmaton " C "**

Deviated: No Whipstock: ft (KB)

Time Tool Opened: 23:44:10

Time Test Ended: 04:23:09

Test Type: Conventional Bottom Hole (Reset)

Tester: Will MacLean

Unit No: 58

**Interval: 4494.00 ft (KB) To 4540.00 ft (KB) (TVD)**

Reference Elevations: 3126.00 ft (KB)

Total Depth: 4540.00 ft (KB) (TVD)

3119.00 ft (CF)

Hole Diameter: 7.88 inches Hole Condition: Good

KB to GR/CF: 7.00 ft

**Serial #: 8674**

**Inside**

Press @ Run Depth: 18.70 psig @ 4495.00 ft (KB)

Capacity: 8000.00 psig

Start Date: 2013.07.10

End Date:

2013.07.11

Last Calib.:

2013.07.11

Start Time: 21:50:00

End Time:

04:23:09

Time On Btm:

2013.07.10 @ 23:43:40

Time Off Btm:

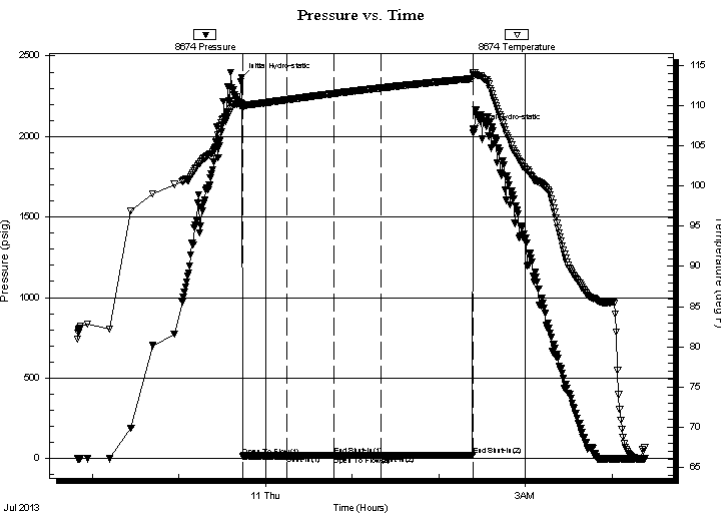
2013.07.11 @ 02:23:54

**TEST COMMENT:** IF- Weak Surface Blow 1/2" Died Back to Very Weak Surface Blow

IS- No Blow

FF- No Blow

FS- No Blow



## PRESSURE SUMMARY

Time (Min.)	Pressure (psig)	Temp (deg F)	Annotation
0	2367.27	110.24	Initial Hydro-static
1	16.34	109.64	Open To Flow (1)
31	17.98	110.71	Shut-In(1)
64	20.71	111.49	End Shut-In(1)
64	17.19	111.50	Open To Flow (2)
97	18.70	112.19	Shut-In(2)
160	21.99	113.36	End Shut-In(2)
161	2050.90	114.13	Final Hydro-static

## Recovery

Length (ft)	Description	Volume (bbl)
1.00	100% m with Oil Spots in Tool	0.00

\* Recovery from multiple tests

## Gas Rates

Choke (inches)	Pressure (psig)	Gas Rate (Mcf/d)



**TRILOBITE  
TESTING, INC.**

# DRILL STEM TEST REPORT

**FLUID SUMMARY**

Shakespeare Oil Co. Inc

**34-16s-34w Scott Co. KS**

202 W. Main St.  
Salem IL 62881

**Janzen # 1-34**

Job Ticket: 49081

**DST#: 3**

ATTN: Steve Davis

Test Start: 2013.07.10 @ 21:50:00

## Mud and Cushion Information

Mud Type: Gel Chem

Cushion Type:

Oil API:

deg API

Mud Weight: 9.00 lb/gal

Cushion Length:

ft

Water Salinity:

ppm

Viscosity: 58.00 sec/qt

Cushion Volume:

bbbl

Water Loss: 8.76 in<sup>3</sup>

Gas Cushion Type:

Resistivity: ohm.m

Gas Cushion Pressure:

psig

Salinity: 7000.00 ppm

Filter Cake: 1.00 inches

## Recovery Information

Recovery Table

Length ft	Description	Volume bbl
1.00	100% m with Oil Spots in Tool	0.005

Total Length: 1.00 ft      Total Volume: 0.005 bbl

Num Fluid Samples: 0

Num Gas Bombs: 0

Serial #:

Laboratory Name:

Laboratory Location:

Recovery Comments:

Serial #: 8674

Inside

Shakespeare Oil Co. Inc

Janzen # 1-34

DST Test Number: 3

