



TRILOBITE TESTING, INC.

DRILL STEM TEST REPORT

Shakespeare Oil Co. Inc

34-16s-34w Scott Co. KS

202 W. Main St.
Salem IL 62881

Janzen # 1-34

Job Ticket: 49082

DST#: 4

ATTN: Steve Davis

Test Start: 2013.07.11 @ 18:48:00

GENERAL INFORMATION:

Formation: **Pawnee - Myric- Ft**

Deviated: No Whipstock: ft (KB)

Time Tool Opened: 20:46:25

Time Test Ended: 02:22:54

Test Type: Conventional Bottom Hole (Reset)

Tester: Will MacLean

Unit No: 58

Interval: 4525.00 ft (KB) To 4625.00 ft (KB) (TVD)

Reference Elevations: 3126.00 ft (KB)

Total Depth: 4625.00 ft (KB) (TVD)

3119.00 ft (CF)

Hole Diameter: 7.88 inches Hole Condition: Good

KB to GR/CF: 7.00 ft

Serial #: 8674

Inside

Press @ Run Depth: 65.36 psig @ 4527.00 ft (KB)

Capacity: 8000.00 psig

Start Date: 2013.07.11

End Date:

2013.07.12

Last Calib.:

2013.07.12

Start Time: 18:48:00

End Time:

02:22:54

Time On Btm:

2013.07.11 @ 20:46:10

Time Off Btm:

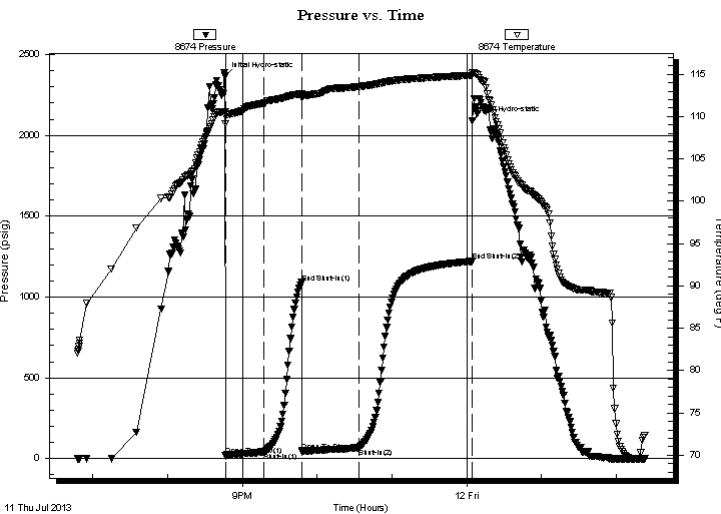
2013.07.12 @ 00:04:39

TEST COMMENT: IF- Weak Surface Blow Built to 3 1/2"

IS- No Blow

FF- Weak Surface Blow Built to 4 3/4"

FS- No Blow



PRESSURE SUMMARY

Time (Min.)	Pressure (psig)	Temp (deg F)	Annotation
0	2366.84	110.61	Initial Hydro-static
1	17.71	109.18	Open To Flow (1)
31	39.97	111.56	Shut-In(1)
62	1089.25	112.70	End Shut-In(1)
62	42.78	112.39	Open To Flow (2)
107	65.36	113.53	Shut-In(2)
198	1221.06	114.87	End Shut-In(2)
199	2090.33	115.13	Final Hydro-static

Recovery

Length (ft)	Description	Volume (bbl)
60.00	OGCM 2%oil 21%g 77%m	0.30
58.00	OGCM 4%oil 12%g 84%m	0.29
0.00	188' of GIP	0.00

* Recovery from multiple tests

Gas Rates

	Choke (inches)	Pressure (psig)	Gas Rate (Mcf/d)



**TRILOBITE
TESTING, INC.**

DRILL STEM TEST REPORT

FLUID SUMMARY

Shakespeare Oil Co. Inc

34-16s-34w Scott Co. KS

202 W. Main St.
Salem IL 62881

Janzen # 1-34

Job Ticket: 49082

DST#: 4

ATTN: Steve Davis

Test Start: 2013.07.11 @ 18:48:00

Mud and Cushion Information

Mud Type: Gel Chem

Cushion Type:

Oil API:

deg API

Mud Weight: 9.00 lb/gal

Cushion Length:

ft

Water Salinity:

ppm

Viscosity: 52.00 sec/qt

Cushion Volume:

bbbl

Water Loss: 9.56 in³

Gas Cushion Type:

Resistivity: ohm.m

Gas Cushion Pressure:

psig

Salinity: 7400.00 ppm

Filter Cake: 1.00 inches

Recovery Information

Recovery Table

Length ft	Description	Volume bbbl
60.00	OGCM 2%oil 21%g 77%m	0.295
58.00	OGCM 4%oil 12%g 84%m	0.285
0.00	188' of GIP	0.000

Total Length: 118.00 ft

Total Volume: 0.580 bbl

Num Fluid Samples: 0

Num Gas Bombs: 0

Serial #:

Laboratory Name:

Laboratory Location:

Recovery Comments:

Serial #: 8674

Inside

Shakespeare Oil Co. Inc

Janzen # 1-34

DST Test Number: 4

