



**TRILOBITE
TESTING, INC.**

DRILL STEM TEST REPORT

Shakespeare Oil Co. Inc

34-16s-34w Scott Co. KS

202 W. Main St.
Salem IL 62881

Janzen # 1-34

Job Ticket: 49083

DST#: 5

ATTN: Steve Davis

Test Start: 2013.07.12 @ 17:48:00

GENERAL INFORMATION:

Formation: **Johnson**

Deviated: No Whipstock: ft (KB)

Time Tool Opened: 19:47:25

Time Test Ended: 23:55:39

Test Type: Conventional Bottom Hole (Reset)

Tester: Will MacLean

Unit No: 58

Interval: 4631.00 ft (KB) To 4700.00 ft (KB) (TVD)

Reference Elevations: 3126.00 ft (KB)

Total Depth: 4700.00 ft (KB) (TVD)

3119.00 ft (CF)

Hole Diameter: 7.88 inches Hole Condition: Good

KB to GR/CF: 7.00 ft

Serial #: 8674

Inside

Press @ Run Depth: 20.17 psig @ 4633.00 ft (KB)

Capacity: 8000.00 psig

Start Date: 2013.07.12

End Date:

2013.07.12

Last Calib.:

2013.07.13

Start Time: 17:48:00

End Time:

23:55:39

Time On Btm:

2013.07.12 @ 19:47:10

Time Off Btm:

2013.07.12 @ 21:51:40

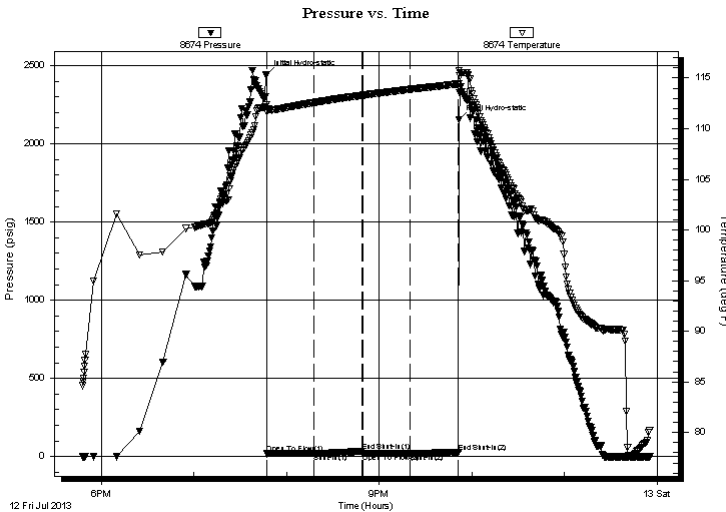
TEST COMMENT: IF- Weak Surface Blow Died in 18min

IS- No Blow

FF- No Blow

FS- No Blow

PRESSURE SUMMARY



Time (Min.)	Pressure (psig)	Temp (deg F)	Annotation
0	2441.12	112.39	Initial Hydro-static
1	18.30	111.68	Open To Flow (1)
31	20.05	112.58	Shut-In(1)
62	34.82	113.29	End Shut-In(1)
63	19.13	113.29	Open To Flow (2)
93	20.17	113.88	Shut-In(2)
125	29.01	114.42	End Shut-In(2)
125	2156.00	115.75	Final Hydro-static

Recovery

Length (ft)	Description	Volume (bbl)
5.00	100% mud w with Skim of Oil on Top	0.02

* Recovery from multiple tests

Gas Rates

Choke (inches)	Pressure (psig)	Gas Rate (Mcf/d)



**TRILOBITE
TESTING, INC.**

DRILL STEM TEST REPORT

FLUID SUMMARY

Shakespeare Oil Co. Inc

34-16s-34w Scott Co. KS

202 W. Main St.
Salem IL 62881

Janzen # 1-34

Job Ticket: 49083

DST#: 5

ATTN: Steve Davis

Test Start: 2013.07.12 @ 17:48:00

Mud and Cushion Information

Mud Type: Gel Chem

Cushion Type:

Oil API:

deg API

Mud Weight: 9.00 lb/gal

Cushion Length:

ft

Water Salinity:

ppm

Viscosity: 50.00 sec/qt

Cushion Volume:

bbbl

Water Loss: 10.79 in³

Gas Cushion Type:

Resistivity: ohm.m

Gas Cushion Pressure:

psig

Salinity: 11000.00 ppm

Filter Cake: 2.00 inches

Recovery Information

Recovery Table

Length ft	Description	Volume bbbl
5.00	100% mud with Skim of Oil on Top	0.025

Total Length: 5.00 ft Total Volume: 0.025 bbl

Num Fluid Samples: 0

Num Gas Bombs: 0

Serial #:

Laboratory Name:

Laboratory Location:

Recovery Comments:

Serial #: 8674

Inside

Shakespeare Oil Co. Inc

Janzen # 1-34

DST Test Number: 5

Pressure vs. Time

