



DRILL STEM TEST REPORT

Prepared For: **F.G. Holl Company L.L.C.**

9431 East Central Suite100
Wichita, Kansas 67206-2563

ATTN: Ryan Greenbaum

McDonald #1-19

19-20s-13w Barton

Start Date: 2013.07.26 @ 00:00:00

End Date: 2013.07.26 @ 00:00:00

Job Ticket #: 17107 DST #: 11

Superior Testers Enterprises LLC
PO Box 138 Great Bend KS 67530
1-800-792-6902

Printed: 2013.07.26 @ 11:36:20



DRILL STEM TEST REPORT

F.G. Holl Company L.L.C.

19-20s-13w Barton

9431 East Central Suite100
Wichita, Kansas 67206-2563

McDonald #1-19

Job Ticket: 17107

DST#: 11

ATTN: Ryan Greenbaum

Test Start: 2013.07.26 @ 00:00:00

GENERAL INFORMATION:

Formation: **Arbuckle**

Deviated: No Whipstock: ft (KB)

Time Tool Opened: 00:00:00

Time Test Ended: 00:00:00

Test Type: Conventional Bottom Hole (Initial)

Tester: Gene Budig

Unit No: 3335

Interval: 3534.00 ft (KB) To 3545.00 ft (KB) (TVD)

Reference Elevations: 1888.00 ft (KB)

Total Depth: 3545.00 ft (KB) (TVD)

1880.00 ft (CF)

Hole Diameter: 7.88 inches Hole Condition: Fair

KB to GR/CF: 8.00 ft

Serial #: 6748 Outside

Press@RunDepth: psia @ 3542.00 ft (KB)

Capacity: 5000.00 psia

Start Date: 2013.07.26 End Date: 2013.07.26

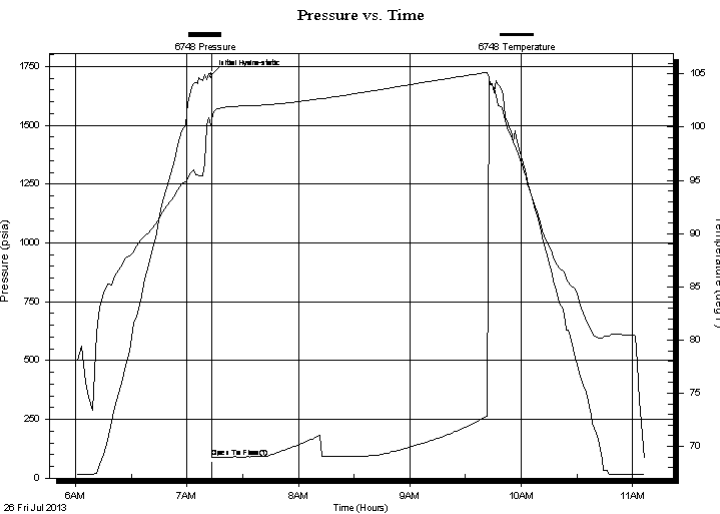
Last Calib.: 2013.07.26

Start Time: 06:00:00 End Time: 11:06:30

Time On Btm: 2013.07.26 @ 07:13:00

Time Off Btm:

TEST COMMENT: 1st opening 30 Minutes weak surface blow through out
1st Shut-In 30 Minutes no blow back
2nd Opening 30 Minutes-weak surface blow through out
2nd Shut-In 60 Minutes no blow back



PRESSURE SUMMARY

Time (Min.)	Pressure (psia)	Temp (deg F)	Annotation
0	1715.63	100.54	Initial Hydro-static
1	88.47	100.78	Open To Flow (1)

Recovery

Length (ft)	Description	Volume (bbl)

Gas Rates

Choke (inches)	Pressure (psia)	Gas Rate (Mcf/d)



DRILL STEM TEST REPORT

TOOL DIAGRAM

F.G. Holl Company L.L.C.

19-20s-13w Barton

9431 East Central Suite100
Wichita, Kansas 67206-2563

McDonald #1-19

Job Ticket: 17107

DST#: 11

ATTN: Ryan Greenbaum

Test Start: 2013.07.26 @ 00:00:00

Tool Information

Drill Pipe:	Length: 3528.00 ft	Diameter: 3.80 inches	Volume: 49.49 bbl	Tool Weight: 2000.00 lb
Heavy Wt. Pipe:	Length: 0.00 ft	Diameter: 0.00 inches	Volume: 0.00 bbl	Weight set on Packer: 20000.00 lb
Drill Collar:	Length: 0.00 ft	Diameter: 0.00 inches	Volume: 0.00 bbl	Weight to Pull Loose: 60000.00 lb
			<u>Total Volume: 49.49 bbl</u>	Tool Chased 0.00 ft
Drill Pipe Above KB:	22.00 ft			String Weight: Initial 50000.00 lb
Depth to Top Packer:	3534.00 ft			Final 50000.00 lb
Depth to Bottom Packer:	ft			
Interval between Packers:	11.00 ft			
Tool Length:	39.00 ft			
Number of Packers:	2	Diameter: 6.75 inches		

Tool Comments:

Tool Description	Length (ft)	Serial No.	Position	Depth (ft)	Accum. Lengths
Shut-In Tool	5.00			3511.00	
Hydraulic Tool	5.00			3516.00	
Safety Joint	2.00			3518.00	
Jars	6.00			3524.00	
Packer	5.00			3529.00	28.00 Bottom Of Top Packer
Packer	5.00			3534.00	
Anchor	6.00			3540.00	
Recorder	1.00	6663	Inside	3541.00	
Recorder	1.00	6748	Outside	3542.00	
Bullnose	3.00			3545.00	11.00 Bottom Packers & Anchor
Total Tool Length:	39.00				



DRILL STEM TEST REPORT

FLUID SUMMARY

F.G. Holl Company L.L.C.

19-20s-13w Barton

9431 East Central Suite100
Wichita, Kansas 67206-2563

McDonald #1-19

Job Ticket: 17107

DST#: 11

ATTN: Ryan Greenbaum

Test Start: 2013.07.26 @ 00:00:00

Mud and Cushion Information

Mud Type: Gel Chem

Cushion Type:

Oil API:

deg API

Mud Weight: 9.00 lb/gal

Cushion Length:

ft

Water Salinity:

ppm

Viscosity: 48.00 sec/qt

Cushion Volume:

bbbl

Water Loss: 8.79 in³

Gas Cushion Type:

Resistivity: ohm.m

Gas Cushion Pressure:

psia

Salinity: 6900.00 ppm

Filter Cake: 1.00 inches

Recovery Information

Recovery Table

Length ft	Description	Volume bbl

Total Length: ft Total Volume: bbl

Num Fluid Samples: 0 Num Gas Bombs: 0 Serial #:

Laboratory Name: Laboratory Location:

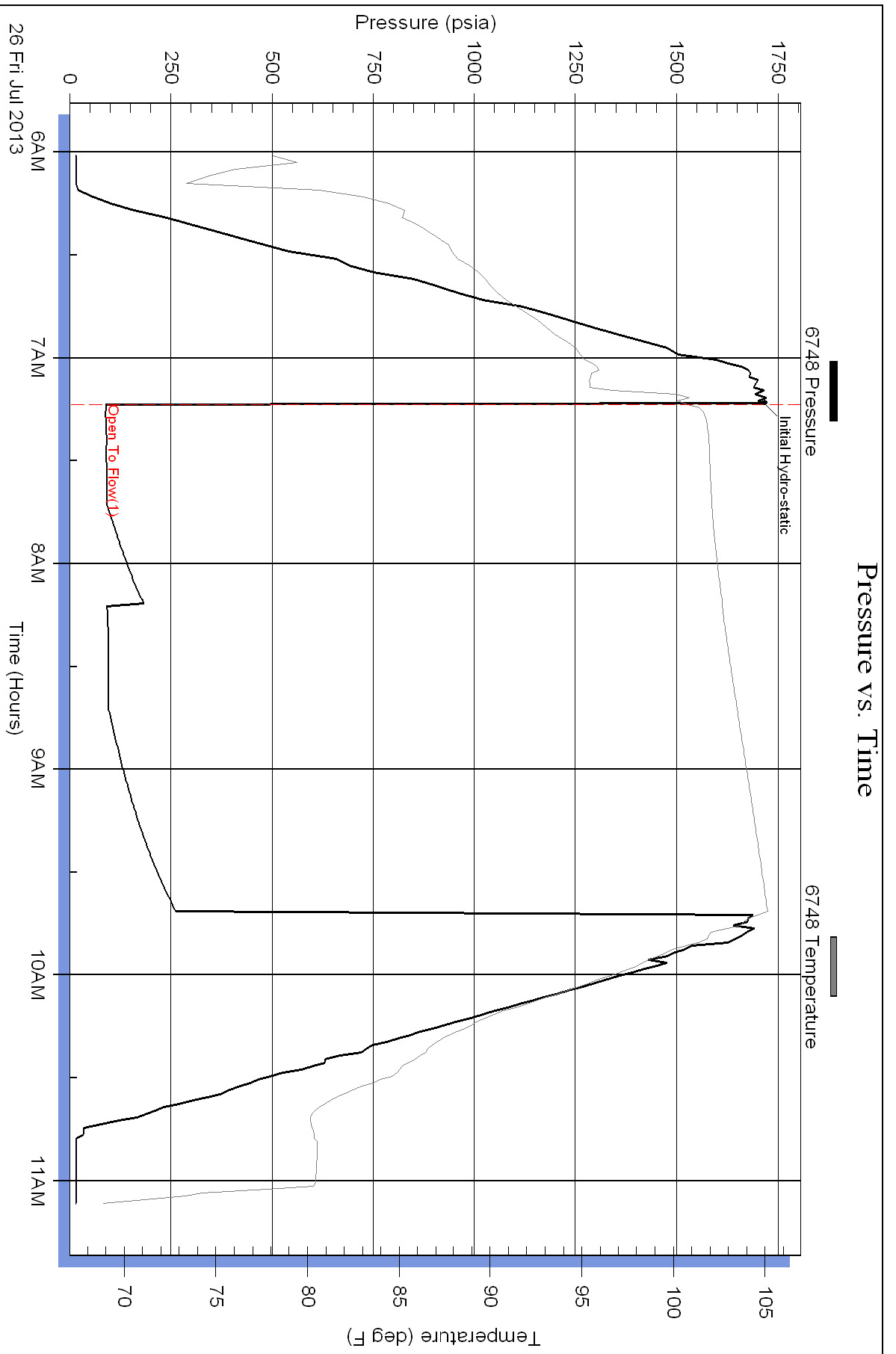
Recovery Comments:

Serial #: 6748

Outside F.G. Holl Company L.L.C.

McDonald #1-19

DST Test Number: 11



Pressure vs. Time

