



DRILL STEM TEST REPORT

Prepared For: **FG Holl Company LLC**

9431 East Central
Suite 100
Wichita, Kansas 67206+2563

ATTN: Ryan Greenbaum

Krupp 3-10

10/22S/14W/Stafford

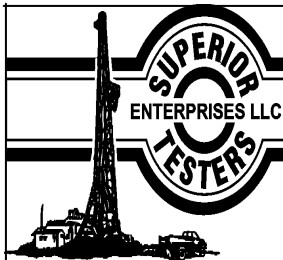
Start Date: 2013.10.08 @ 14:05:00

End Date: 2013.10.08 @ 19:14:30

Job Ticket #: 18162 DST #: 1

Superior Testers Enterprises LLC
PO Box 138 Great Bend KS 67530
1-800-792-6902

Printed: 2013.10.08 @ 19:27:01



DRILL STEM TEST REPORT

FG Holl Company LLC

10/22S/14W/Stafford

9431 East Central
Suite 100
Wichita, Kansas 67206+2563
ATTN: Ryan Greenbaum

Krupp 3-10

Job Ticket: 18162 **DST#: 1**
Test Start: 2013.10.08 @ 14:05:00

GENERAL INFORMATION:

Formation: **Lansing/Kansas City**

Deviated: No Whipstock: ft (KB)

Time Tool Opened: 16:12:30

Time Test Ended: 19:14:30

Test Type: Conventional Bottom Hole (Initial)

Tester: Ken Swinney

Unit No: 3325 Great Bend

Interval: 3500.00 ft (KB) To 3533.00 ft (KB) (TVD)

Reference Elevations: 1946.00 ft (KB)

Total Depth: 3533.00 ft (KB) (TVD)

1938.00 ft (CF)

Hole Diameter: 7.80 inches Hole Condition: Poor

KB to GR/CF: 8.00 ft

Serial #: 6749

Inside

Press @ RunDepth: 656.90 psia @ 3529.00 ft (KB)

Capacity: 5000.00 psia

Start Date: 2013.10.08

End Date:

2013.10.08

Last Calib.:

2013.10.08

Start Time:

14:05:00

End Time:

19:14:30

Time On Btm:

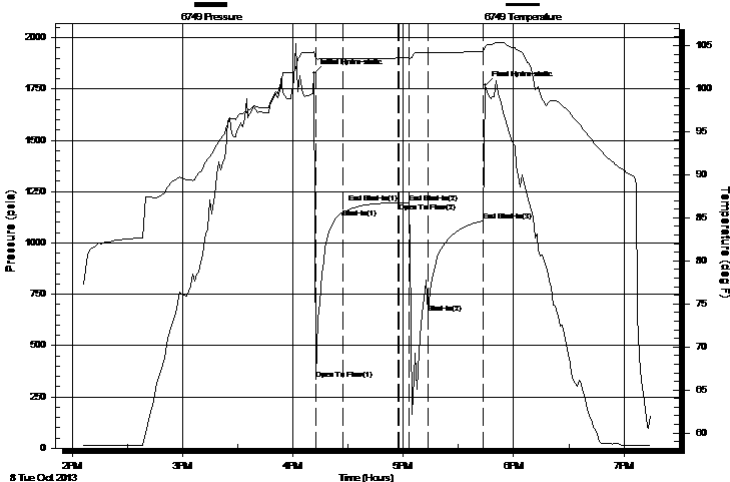
2013.10.08 @ 16:11:30

Time Off Btm:

2013.10.08 @ 17:44:30

TEST COMMENT: 1ST Open 15 Minutes/Weak blow /Blow 3/4 inch at open/Died to 1/2 inch
1ST Shut In 30 Minutes/No blow back
2ND Open 15 Minutes/Dead no blow /Flush tool no help
2ND Shut In 30 Minutes/No blow back

Pressure vs. Time



PRESSURE SUMMARY

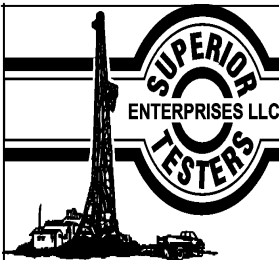
Time (Min.)	Pressure (psia)	Temp (deg F)	Annotation
0	1826.52	104.26	Initial Hydro-static
1	336.43	103.42	Open To Flow (1)
16	1123.34	103.50	Shut-In(1)
46	1196.04	103.54	End Shut-In(1)
46	1195.89	103.54	Open To Flow (2)
52	1196.52	103.57	End Shut-In(2)
62	656.90	104.17	Shut-In(2)
93	1108.01	104.31	End Shut-In(3)
93	1767.62	104.91	Final Hydro-static

Recovery

Length (ft)	Description	Volume (bbl)
45.00	Mud 100%	0.63

Gas Rates

Choke (inches)	Pressure (psia)	Gas Rate (Mcf/d)



DRILL STEM TEST REPORT

FG Holl Company LLC

10/22S/14W/Stafford

9431 East Central
 Suite 100
 Wichita, Kansas 67206+2563
 ATTN: Ryan Greenbaum

Krupp 3-10

Job Ticket: 18162

DST#: 1

Test Start: 2013.10.08 @ 14:05:00

GENERAL INFORMATION:

Formation: **Lansing/Kansas City**

Deviated: No Whipstock: ft (KB)

Time Tool Opened: 16:12:30

Time Test Ended: 19:14:30

Test Type: Conventional Bottom Hole (Initial)

Tester: Ken Swinney

Unit No: 3325 Great Bend

Interval: 3500.00 ft (KB) To 3533.00 ft (KB) (TVD)

Reference Elevations: 1946.00 ft (KB)

Total Depth: 3533.00 ft (KB) (TVD)

1938.00 ft (CF)

Hole Diameter: 7.80 inches Hole Condition: Poor

KB to GR/CF: 8.00 ft

Serial #: 6666 Outside

Press @ Run Depth: 1105.36 psia @ 3530.00 ft (KB)

Capacity: 5000.00 psia

Start Date: 2013.10.08

End Date: 2013.10.08

Last Calib.: 2013.10.08

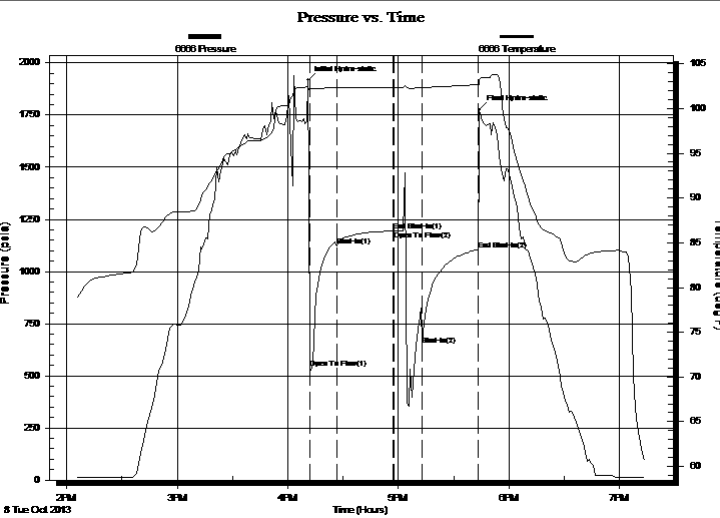
Start Time: 14:05:00

End Time: 19:14:00

Time On Btm: 2013.10.08 @ 16:11:00

Time Off Btm: 2013.10.08 @ 17:44:00

TEST COMMENT: 1ST Open 15 Minutes/Weak blow /Blow 3/4 inch at open/Died to 1/2 inch
 1ST Shut In 30 Minutes/No blow back
 2ND Open 15 Minutes/Dead no blow /Flush tool no help
 2ND Shut In 30 Mintues/No blow back



PRESSURE SUMMARY

Time (Min.)	Pressure (psia)	Temp (deg F)	Annotation
0	1917.22	102.57	Initial Hydro-static
1	539.12	102.27	Open To Flow (1)
16	1122.07	102.33	Shut-In(1)
46	1194.88	102.38	End Shut-In(1)
47	1194.55	102.38	Open To Flow (2)
62	646.21	102.32	Shut-In(2)
92	1105.36	102.66	End Shut-In(2)
93	1774.57	103.17	Final Hydro-static

Recovery

Length (ft)	Description	Volume (bbl)
45.00	Mud 100%	0.63

Gas Rates

Choke (inches)	Pressure (psia)	Gas Rate (Mcf/d)



DRILL STEM TEST REPORT

TOOL DIAGRAM

FG Holl Company LLC

10/22S/14W/Stafford

9431 East Central
Suite 100
Wichita, Kansas 67206+2563
ATTN: Ryan Greenbaum

Krupp 3-10

Job Ticket: 18162

DST#: 1

Test Start: 2013.10.08 @ 14:05:00

Tool Information

Drill Pipe:	Length: 3502.00 ft	Diameter: 3.80 inches	Volume: 49.12 bbl	Tool Weight: 2000.00 lb
Heavy Wt. Pipe:	Length: 0.00 ft	Diameter: 0.00 inches	Volume: 0.00 bbl	Weight set on Packer: 20000.00 lb
Drill Collar:	Length: 0.00 ft	Diameter: 0.00 inches	Volume: 0.00 bbl	Weight to Pull Loose: 58000.00 lb
			<u>Total Volume: 49.12 bbl</u>	Tool Chased 7.00 ft
Drill Pipe Above KB:	29.00 ft			String Weight: Initial 44000.00 lb
Depth to Top Packer:	3500.00 ft			Final 44000.00 lb
Depth to Bottom Packer:	ft			
Interval between Packers:	33.00 ft			
Tool Length:	60.00 ft			
Number of Packers:	2	Diameter: 6.75 inches		

Tool Comments:

Tool Description	Length (ft)	Serial No.	Position	Depth (ft)	Accum. Lengths
Shut In Tool	5.00			3478.00	
Hydraulic Tool	5.00			3483.00	
Jars	5.00			3488.00	
Safety Joint	2.00			3490.00	
Packer	5.00			3495.00	27.00 Bottom Of Top Packer
Packer	5.00			3500.00	
Anchor	28.00			3528.00	
Recorder	1.00	6749	Inside	3529.00	
Recorder	1.00	6666	Outside	3530.00	
Bullnose	3.00			3533.00	33.00 Bottom Packers & Anchor
Total Tool Length:	60.00				



DRILL STEM TEST REPORT

FLUID SUMMARY

FG Holl Company LLC

10/22S/14W/Stafford

9431 East Central
Suite 100
Wichita, Kansas 67206+2563
ATTN: Ryan Greenbaum

Krupp 3-10

Job Ticket: 18162

DST#: 1

Test Start: 2013.10.08 @ 14:05:00

Mud and Cushion Information

Mud Type: Gel Chem

Mud Weight: 9.00 lb/gal

Viscosity: 50.00 sec/qt

Water Loss: 8.40 in³

Resistivity: ohm.m

Salinity: 5300.00 ppm

Filter Cake: 1.00 inches

Cushion Type:

Cushion Length: ft

Cushion Volume: bbl

Gas Cushion Type:

Gas Cushion Pressure: psia

Oil API:

Water Salinity: deg API

ppm

Recovery Information

Recovery Table

Length ft	Description	Volume bbl
45.00	Mud 100%	0.631

Total Length: 45.00 ft Total Volume: 0.631 bbl

Num Fluid Samples: 0

Num Gas Bombs: 0

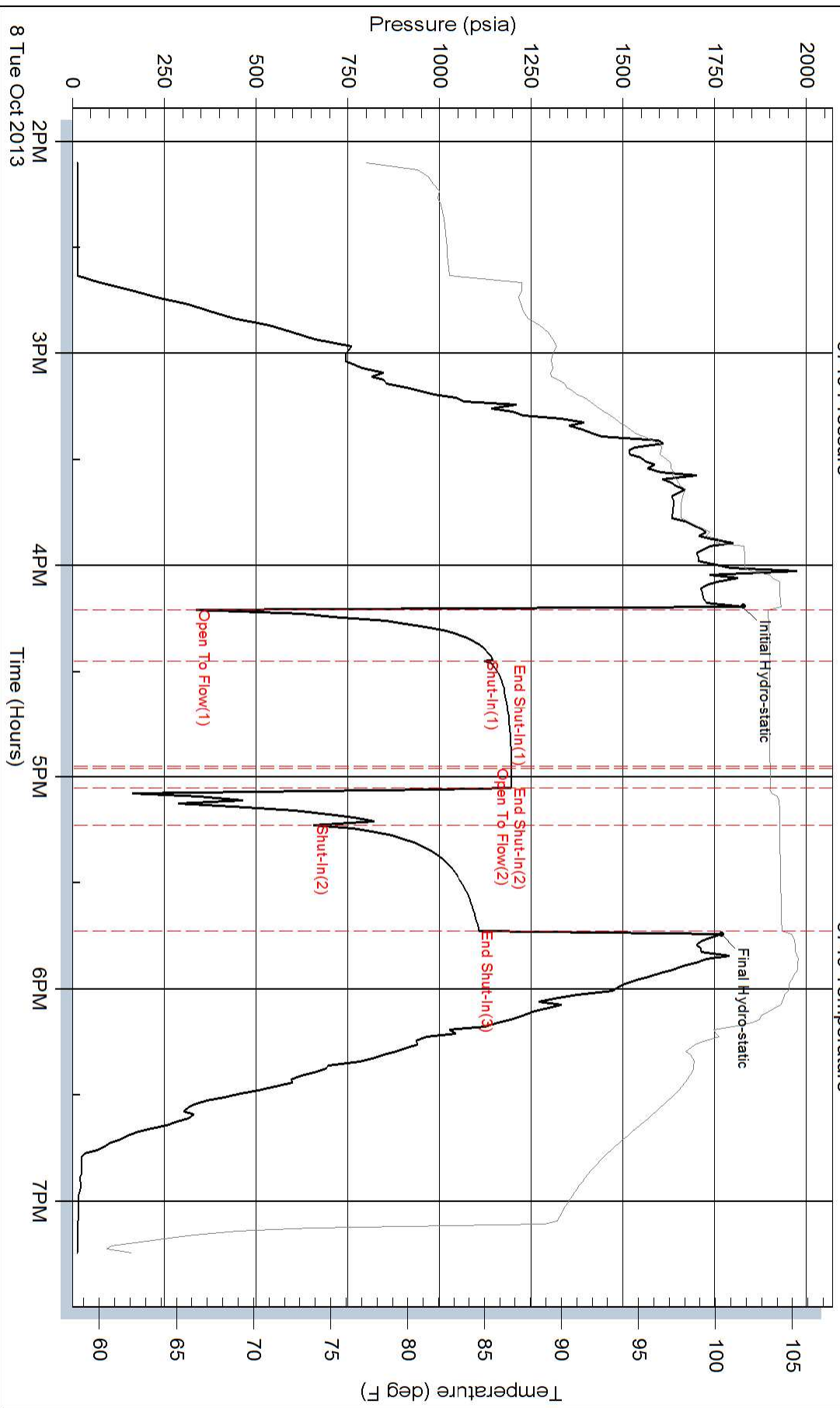
Serial #:

Laboratory Name:

Laboratory Location:

Recovery Comments:

Pressure vs. Time



Pressure vs. Time

