



DRILL STEM TEST REPORT

Prepared For: **FG Holl Company LLC**

9431 East Central
Suite 100
Wichita, Kansas 67206+2563

ATTN: Ryan Greenbaum

Krupp 3-10

10/22S/14W/Stafford

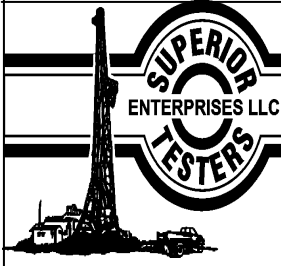
Start Date: 2013.10.14 @ 01:39:00

End Date: 2013.10.14 @ 07:02:30

Job Ticket #: 18171 DST #: 10

Superior Testers Enterprises LLC
PO Box 138 Great Bend KS 67530
1-800-792-6902

Printed: 2013.10.14 @ 07:14:13



DRILL STEM TEST REPORT

FG Holl Company LLC
 9431 East Central
 Suite 100
 Wichita, Kansas 67206+2563
 ATTN: Ryan Greenbaum

10/22S/14W/Stafford
Krupp 3-10
 Job Ticket: 18171 **DST#: 10**
 Test Start: 2013.10.14 @ 01:39:00

GENERAL INFORMATION:

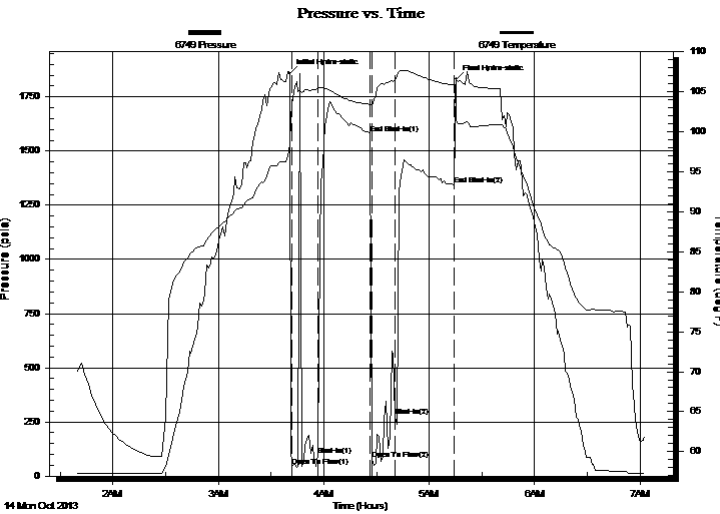
Formation: **Arbuckle**
 Deviated: No Whipstock: ft (KB)
 Test Type: Conventional Bottom Hole (Initial)
 Time Tool Opened: 03:42:00 Tester: Ken Swinney
 Time Test Ended: 07:02:30 Unit No: 3325 Great Bend/36
 Interval: **3813.00 ft (KB) To 3819.00 ft (KB) (TVD)** Reference Elevations: 1946.00 ft (KB)
 Total Depth: 3819.00 ft (KB) (TVD) 1938.00 ft (CF)
 Hole Diameter: 7.80 inches Hole Condition: KB to GR/CF: 8.00 ft

Serial #: 6749 Inside

Press@RunDepth: 277.64 psia @ 3815.00 ft (KB) Capacity: 5000.00 psia
 Start Date: 2013.10.14 End Date: 2013.10.14 Last Calib.: 2013.10.14
 Start Time: 01:39:00 End Time: 07:02:30 Time On Btm: 2013.10.14 @ 03:40:30
 Time Off Btm: 2013.10.14 @ 05:15:30

TEST COMMENT: 7 foot slide still sitting 5 foot high

1ST Open 15 Minutes/Weak surging blow/Blow built to 3 inches
 1ST Shut In 30 Minutes/No blow back



PRESSURE SUMMARY

Time (Min.)	Pressure (psia)	Temp (deg F)	Annotation
0	1858.05	98.33	Initial Hydro-static
2	43.45	103.52	Open To Flow (1)
16	95.22	105.38	Shut-In(1)
46	1582.08	103.42	End Shut-In(1)
47	76.80	103.25	Open To Flow (2)
60	277.64	106.40	Shut-In(2)
94	1344.43	105.84	End Shut-In(2)
95	1831.13	101.39	Final Hydro-static

Recovery

Length (ft)	Description	Volume (bbl)
40.00	Oily Mud	0.56
0.00	Oil 30% Mud 70%	0.00

Gas Rates

Choke (inches)	Pressure (psia)	Gas Rate (Mcf/d)



DRILL STEM TEST REPORT

FG Holl Company LLC
 9431 East Central
 Suite 100
 Wichita, Kansas 67206+2563
 ATTN: Ryan Greenbaum

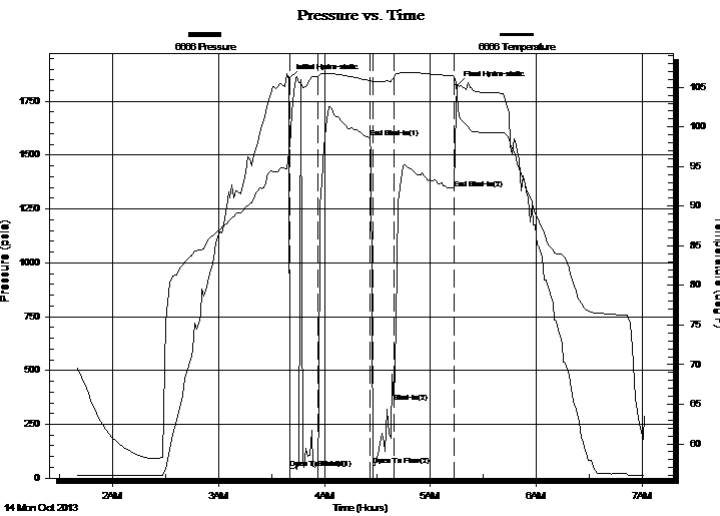
10/22S/14W/Stafford
Krupp 3-10
 Job Ticket: 18171 **DST#: 10**
 Test Start: 2013.10.14 @ 01:39:00

GENERAL INFORMATION:

Formation: **Arbuckle**
 Deviated: No Whipstock: ft (KB)
 Test Type: Conventional Bottom Hole (Initial)
 Time Tool Opened: 03:42:00 Tester: Ken Swinney
 Time Test Ended: 07:02:30 Unit No: 3325 Great Bend/36
 Interval: **3813.00 ft (KB) To 3819.00 ft (KB) (TVD)** Reference Elevations: 1946.00 ft (KB)
 Total Depth: 3819.00 ft (KB) (TVD) 1938.00 ft (CF)
 Hole Diameter: 7.80 inches Hole Condition: KB to GR/CF: 8.00 ft

Serial #: 6666 Outside
 Press @ RunDepth: 1343.79 psia @ 3816.00 ft (KB) Capacity: 5000.00 psia
 Start Date: 2013.10.14 End Date: 2013.10.14 Last Calib.: 2013.10.14
 Start Time: 01:39:00 End Time: 07:02:00 Time On Btm: 2013.10.14 @ 03:40:00
 Time Off Btm: 2013.10.14 @ 05:15:00

TEST COMMENT: 7 foot slide still sitting 5 foot high
 1ST Open 15 Minutes/Weak surging blow/Blow built to 3 inches
 1ST Shut In 30 Minutes/No blow back



PRESSURE SUMMARY

Time (Min.)	Pressure (psia)	Temp (deg F)	Annotation
0	1857.08	97.71	Initial Hydro-static
1	45.91	97.51	Open To Flow (1)
16	86.96	106.34	Shut-In(1)
46	1581.60	105.86	End Shut-In(1)
48	57.98	105.55	Open To Flow (2)
60	353.26	106.29	Shut-In(2)
94	1343.79	106.42	End Shut-In(2)
95	1824.90	103.96	Final Hydro-static

Recovery

Length (ft)	Description	Volume (bbl)
40.00	Oily Mud	0.56
0.00	Oil 30% Mud 70%	0.00

Gas Rates

Choke (inches)	Pressure (psia)	Gas Rate (Mcf/d)



DRILL STEM TEST REPORT

TOOL DIAGRAM

FG Holl Company LLC

10/22S/14W/Stafford

9431 East Central
Suite 100
Wichita, Kansas 67206+2563
ATTN: Ryan Greenbaum

Krupp 3-10

Job Ticket: 18171

DST#: 10

Test Start: 2013.10.14 @ 01:39:00

Tool Information

Drill Pipe:	Length: 3789.00 ft	Diameter: 3.80 inches	Volume: 53.15 bbl	Tool Weight:	2000.00 lb
Heavy Wt. Pipe:	Length: 0.00 ft	Diameter: 0.00 inches	Volume: 0.00 bbl	Weight set on Packer:	20000.00 lb
Drill Collar:	Length: 0.00 ft	Diameter: 0.00 inches	Volume: 0.00 bbl	Weight to Pull Loose:	70000.00 lb
			<u>Total Volume: 53.15 bbl</u>	Tool Chased	7.00 ft
Drill Pipe Above KB:	3.00 ft			String Weight: Initial	50000.00 lb
Depth to Top Packer:	3813.00 ft			Final	50000.00 lb
Depth to Bottom Packer:	ft				
Interval between Packers:	6.00 ft				
Tool Length:	33.00 ft				
Number of Packers:	2	Diameter: 6.75 inches			

Tool Comments:

Tool Description	Length (ft)	Serial No.	Position	Depth (ft)	Accum. Lengths
Shut In Tool	5.00			3791.00	
Hydraulic Tool	5.00			3796.00	
Jars	5.00			3801.00	
Safety Joint	2.00			3803.00	
Packer	5.00			3808.00	27.00 Bottom Of Top Packer
Packer	5.00			3813.00	
Anchor	1.00			3814.00	
Recorder	1.00	6749	Inside	3815.00	
Recorder	1.00	6666	Outside	3816.00	
Bullnose	3.00			3819.00	6.00 Bottom Packers & Anchor
Total Tool Length:	33.00				



DRILL STEM TEST REPORT

FLUID SUMMARY

FG Holl Company LLC

10/22S/14W/Stafford

9431 East Central
Suite 100
Wichita, Kansas 67206+2563
ATTN: Ryan Greenbaum

Krupp 3-10

Job Ticket: 18171

DST#: 10

Test Start: 2013.10.14 @ 01:39:00

Mud and Cushion Information

Mud Type: Gel Chem
Mud Weight: 9.00 lb/gal
Viscosity: 52.00 sec/qt
Water Loss: 7.20 in³
Resistivity: ohm.m
Salinity: 5000.00 ppm
Filter Cake: 1.00 inches

Cushion Type:
Cushion Length: ft
Cushion Volume: bbl
Gas Cushion Type:
Gas Cushion Pressure: psia

Oil API: deg API
Water Salinity: ppm

Recovery Information

Recovery Table

Length ft	Description	Volume bbl
40.00	Oily Mud	0.561
0.00	Oil 30% Mud 70%	0.000

Total Length: 40.00 ft Total Volume: 0.561 bbl

Num Fluid Samples: 0

Num Gas Bombs: 0

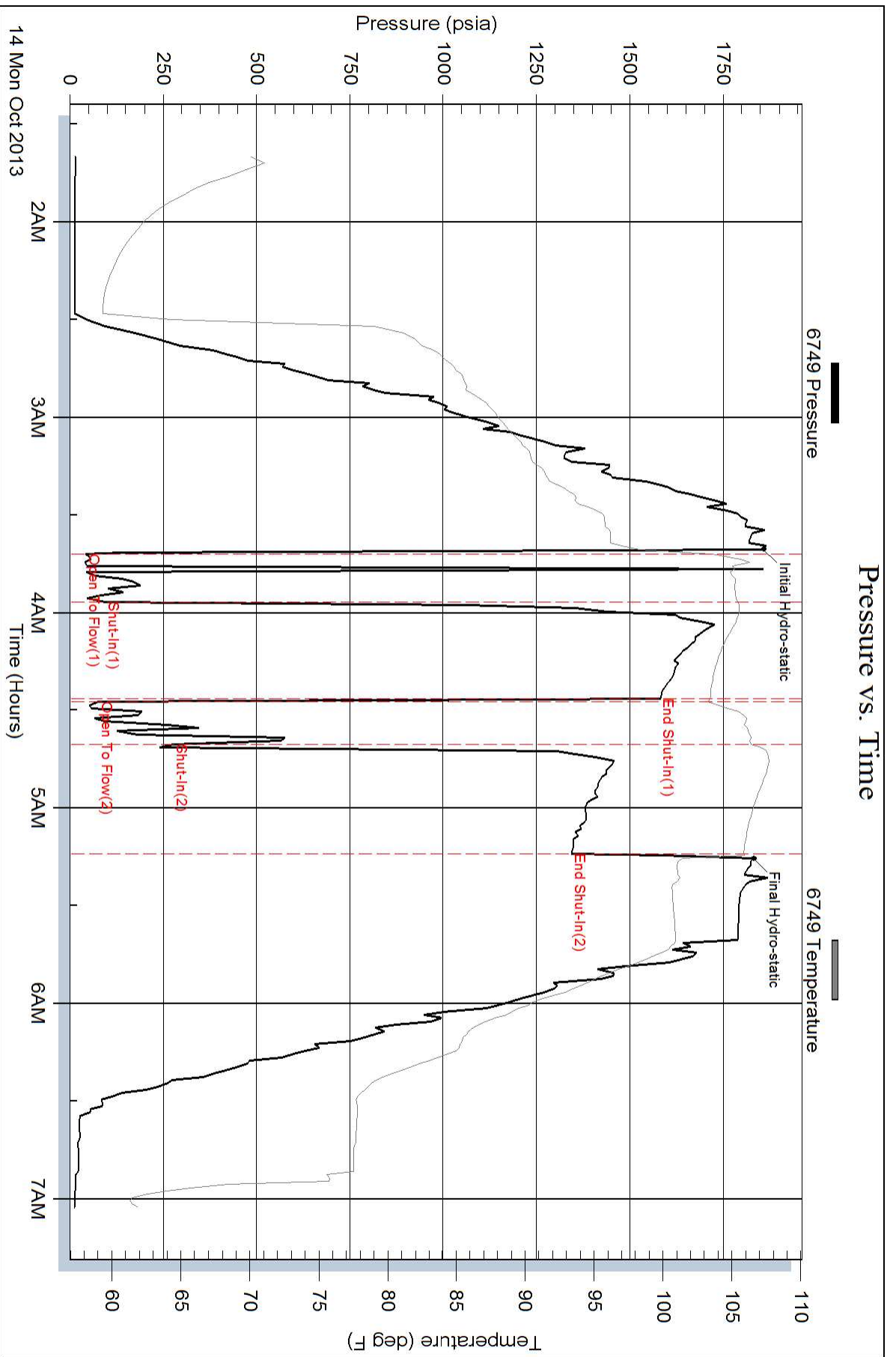
Serial #:

Laboratory Name:

Laboratory Location:

Recovery Comments:

Pressure vs. Time



Pressure vs. Time

