



## DRILL STEM TEST REPORT

Prepared For: **Black Tea Oil, LLC**

1011 Centennial BLVD. Ste B  
Hays Ks, 67601

ATTN: Kevin Bailey

**Krebs #1**

**33/14s/32w/Logan**

Start Date: 2013.11.26 @ 16:15:00

End Date: 2013.11.26 @ 23:05:00

Job Ticket #: 18603                      DST #: 1

Superior Testers Enterprises LLC  
PO Box 138 Great Bend KS 67530  
1-800-792-6902

Printed: 2013.11.26 @ 23:23:03



# DRILL STEM TEST REPORT

Black Tea Oil, LLC

**33/14s/32w/Logan**

1011 Centennial BLVD. Ste B  
Hays Ks, 67601

**Krebs #1**

Job Ticket: 18603

**DST#: 1**

ATTN: Kevin Bailey

Test Start: 2013.11.26 @ 16:15:00

## GENERAL INFORMATION:

Formation: **Marmaton/ Pan Ft.**

Deviated: No Whipstock: ft (KB)

Time Tool Opened: 18:42:30

Time Test Ended: 23:05:00

Test Type: Conventional Bottom Hole (Initial)

Tester: Shane Konzem

Unit No: 3330/50/Scott City

**Interval: 4132.00 ft (KB) To 4232.00 ft (KB) (TVD)**

Reference Elevations: 2741.00 ft (KB)

Total Depth: 4232.00 ft (KB) (TVD)

2732.00 ft (CF)

Hole Diameter: 7.88 inches Hole Condition: Poor

KB to GR/CF: 9.00 ft

**Serial #: 6663 Inside**

Press @ RunDepth: 85.23 psia @ 4225.86 ft (KB)

Capacity: 5000.00 psia

Start Date: 2013.11.26

End Date: 2013.11.26

Last Calib.: 2013.11.26

Start Time: 16:15:00

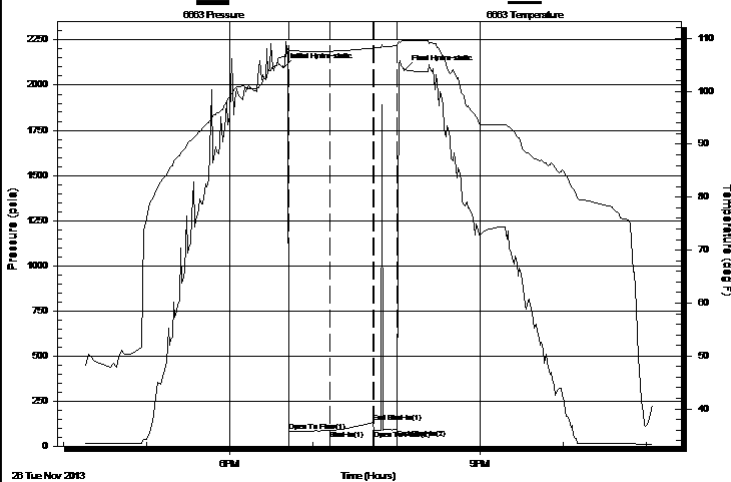
End Time: 23:05:00

Time On Btm: 2013.11.26 @ 18:38:30

Time Off Btm: 2013.11.26 @ 20:06:00

**TEST COMMENT:** 1st Open/ 30 Minutes. Weak blow built to 1/2 inch in 5 gallon bucket.  
1st Shut In/ 30 Minutes No blow back.  
2nd Open/ 30 Minutes. No blow, flushed tool after 5 minutes. Had flush bubbles and gained no blow. Pulled test at 15 Minutes.

Pressure vs. Time



## PRESSURE SUMMARY

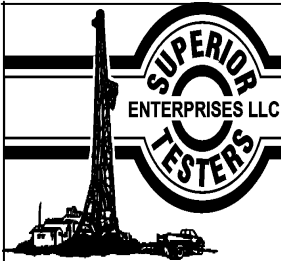
Time (Min.)	Pressure (psia)	Temp (deg F)	Annotation
0	2098.98	106.51	Initial Hydro-static
4	82.24	107.70	Open To Flow (1)
34	85.23	107.56	Shut-In(1)
65	131.99	108.16	End Shut-In(1)
65	86.35	108.15	Open To Flow (2)
82	93.82	108.61	End Shut-In(2)
88	2085.45	109.50	Final Hydro-static

## Recovery

Length (ft)	Description	Volume (bbl)
10.00	2.5% oil cut 97.5% mud.	0.05

## Gas Rates

	Choke (inches)	Pressure (psia)	Gas Rate (Mcf/d)



# DRILL STEM TEST REPORT

Black Tea Oil, LLC

**33/14s/32w/Logan**

1011 Centennial BLVD. Ste B  
Hays Ks, 67601

**Krebs #1**

Job Ticket: 18603

**DST#: 1**

ATTN: Kevin Bailey

Test Start: 2013.11.26 @ 16:15:00

## GENERAL INFORMATION:

Formation: **Marmaton/ Pan Ft.**

Deviated: No Whipstock: ft (KB)

Time Tool Opened: 18:42:30

Time Test Ended: 23:05:00

Test Type: Conventional Bottom Hole (Initial)

Tester: Shane Konzem

Unit No: 3330/50/Scott City

**Interval: 4132.00 ft (KB) To 4232.00 ft (KB) (TVD)**

Reference Elevations: 2741.00 ft (KB)

Total Depth: 4232.00 ft (KB) (TVD)

2732.00 ft (CF)

Hole Diameter: 7.88 inches Hole Condition: Poor

KB to GR/CF: 9.00 ft

**Serial #: 6748 Outside**

Press @ Run Depth: 101.99 psia @ 4226.86 ft (KB)

Capacity: 5000.00 psia

Start Date: 2013.11.26

End Date: 2013.11.26

Last Calib.: 2013.11.26

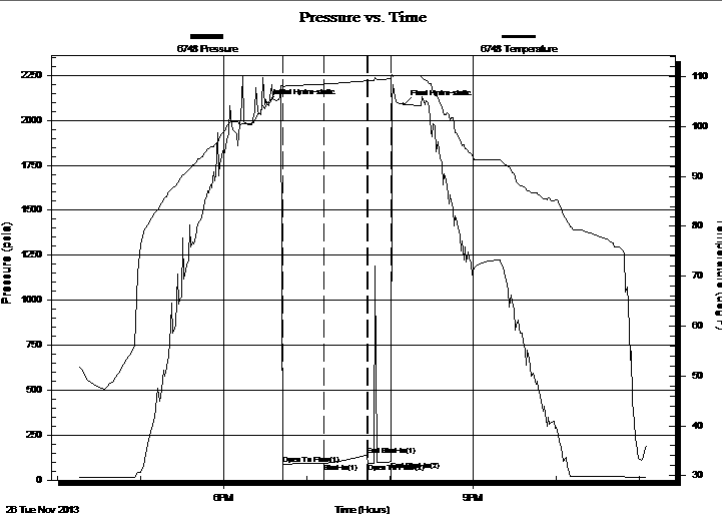
Start Time: 16:15:00

End Time: 23:05:30

Time On Btm: 2013.11.26 @ 18:31:30

Time Off Btm: 2013.11.26 @ 20:10:00

**TEST COMMENT:** 1st Open/ 30 Minutes. Weak blow built to 1/2 inch in 5 gallon bucket.  
1st Shut In/ 30 Minutes. No blow back.  
2nd Open/ 30 Minutes. No blow, flushed tool after 5 minutes. Had flush bubbles and gained no blow. Pulled test at 15 Minutes.



## PRESSURE SUMMARY

Time (Min.)	Pressure (psia)	Temp (deg F)	Annotation
0	2093.83	104.34	Initial Hydro-static
11	89.36	108.01	Open To Flow (1)
41	92.70	108.52	Shut-In(1)
72	140.41	109.20	End Shut-In(1)
73	93.71	109.21	Open To Flow (2)
90	101.99	109.60	End Shut-In(2)
99	2088.39	110.23	Final Hydro-static

## Recovery

Length (ft)	Description	Volume (bbl)
10.00	2.5% oil cut 97.5% mud.	0.05

## Gas Rates

	Choke (inches)	Pressure (psia)	Gas Rate (Mcf/d)



# DRILL STEM TEST REPORT

**TOOL DIAGRAM**

Black Tea Oil, LLC

**33/14s/32w/Logan**

1011 Centennial BLVD. Ste B  
Hays Ks, 67601

**Krebs #1**

Job Ticket: 18603

**DST#: 1**

ATTN: Kevin Bailey

Test Start: 2013.11.26 @ 16:15:00

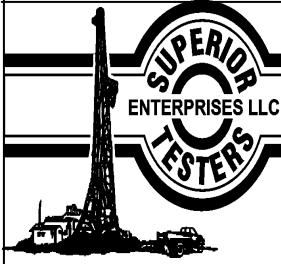
## Tool Information

Drill Pipe:	Length: 4035.00 ft	Diameter: 3.80 inches	Volume: 56.60 bbl	Tool Weight: 2000.00 lb
Heavy Wt. Pipe:	Length: 0.00 ft	Diameter: 0.00 inches	Volume: 0.00 bbl	Weight set on Packer: 25000.00 lb
Drill Collar:	Length: 86.60 ft	Diameter: 2.25 inches	Volume: 0.43 bbl	Weight to Pull Loose: 46000.00 lb
			<u>Total Volume: 57.03 bbl</u>	Tool Chased 0.00 ft
Drill Pipe Above KB:	18.60 ft			String Weight: Initial 38000.00 lb
Depth to Top Packer:	4132.00 ft			Final 38000.00 lb
Depth to Bottom Packer:	ft			
Interval between Packers:	99.86 ft			
Tool Length:	128.86 ft			
Number of Packers:	2	Diameter: 6.75 inches		

Tool Comments: Shale Packer used.

Tool Description	Length (ft)	Serial No.	Position	Depth (ft)	Accum. Lengths
Change Over Sub	1.00			4104.00	
Shut-In Tool	5.00			4109.00	
Hydroic Tool	5.00			4114.00	
Jars	6.00			4120.00	
Safety Joint	2.00			4122.00	
Packer	5.00			4127.00	29.00 Bottom Of Top Packer
Packer	5.00			4132.00	
Perforations	5.00			4137.00	
Change Over Sub	0.75			4137.75	
Drill Pipe	63.36			4201.11	
Change Over Sub	0.75			4201.86	
Perforations	23.00			4224.86	
Recorder	1.00	6663	Inside	4225.86	
Recorder	1.00	6748	Outside	4226.86	
Bullnose	5.00			4231.86	99.86 Bottom Packers & Anchor

**Total Tool Length: 128.86**



# DRILL STEM TEST REPORT

## FLUID SUMMARY

Black Tea Oil, LLC

**33/14s/32w/Logan**

1011 Centennial BLVD. Ste B  
Hays Ks. 67601

**Krebs #1**

Job Ticket: 18603

**DST#: 1**

ATTN: Kevin Bailey

Test Start: 2013.11.26 @ 16:15:00

### Mud and Cushion Information

Mud Type: Gel Chem

Cushion Type:

Oil API:

deg API

Mud Weight: 9.00 lb/gal

Cushion Length: ft

Water Salinity: ppm

Viscosity: 52.00 sec/qt

Cushion Volume: bbl

Water Loss: 8.00 in<sup>3</sup>

Gas Cushion Type:

Resistivity: ohm.m

Gas Cushion Pressure: psia

Salinity: 3000.00 ppm

Filter Cake: inches

### Recovery Information

Recovery Table

Length ft	Description	Volume bbl
10.00	2.5% oil cut 97.5% mud.	0.049

Total Length: 10.00 ft      Total Volume: 0.049 bbl

Num Fluid Samples: 0

Num Gas Bombs: 0

Serial #:

Laboratory Name:

Laboratory Location:

Recovery Comments:

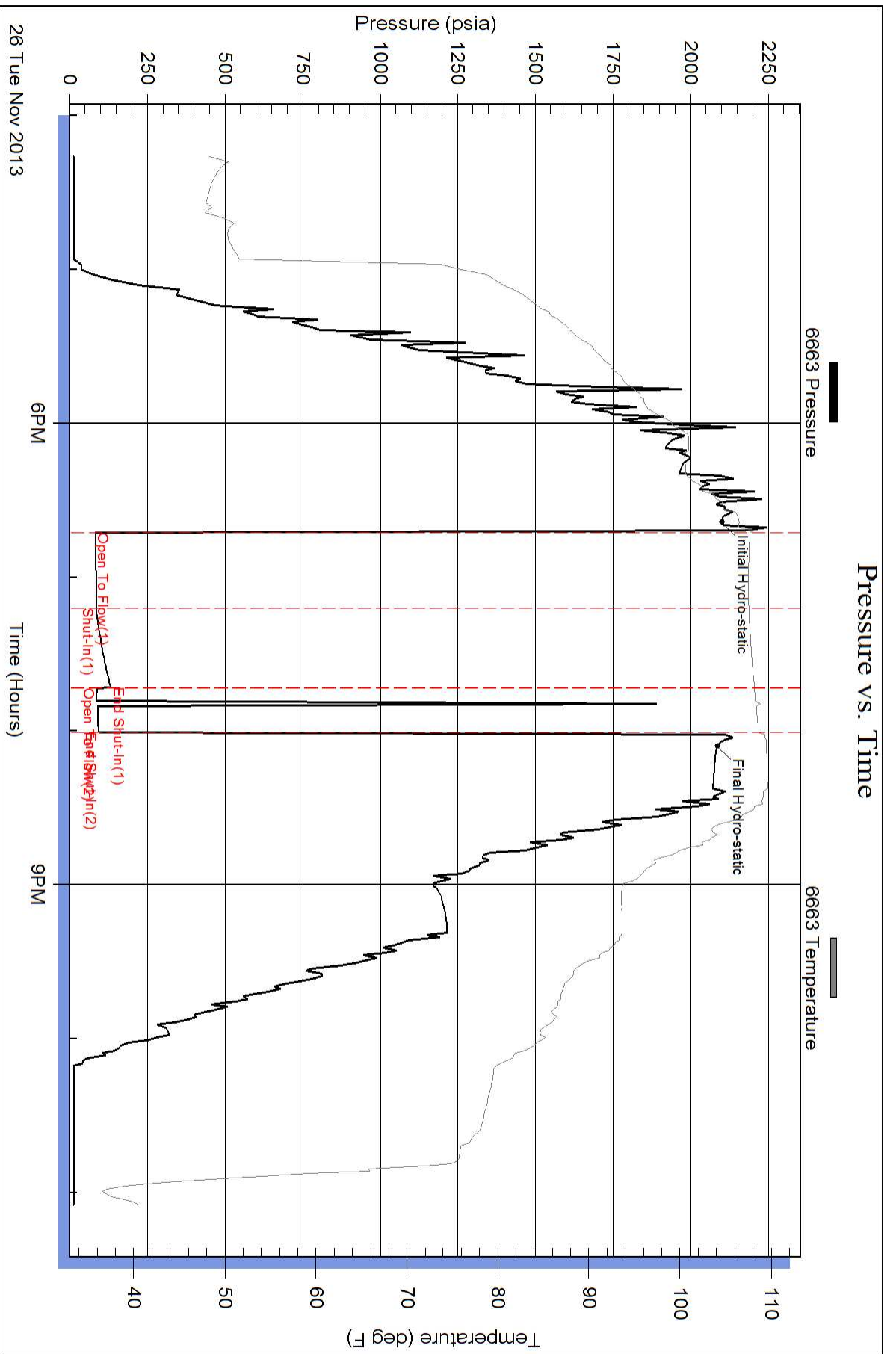
Serial #: 6663

Inside

Black Tea Oil, LLC

Krebs #1

DST Test Number: 1



Superior Testers Enterprises LLC

Ref. No: 18603

Printed: 2013.11.26 @ 23:23:04

Serial #: 6748

Outside Black Tea Oil, LLC

Krebs #1

DST Test Number: 1

