



DRILL STEM TEST REPORT

Prepared For: **F.G.Holl Company LLC**

9431 East Central Suite 100
Wichita, Kansas 67206

ATTN: Ryan Greenbaum

Smith "F" #1-6

6-21s-15w

Start Date: 2014.02.20 @ 00:00:00

End Date: 2014.02.20 @ 00:00:00

Job Ticket #: 17123 DST #: 2

Superior Testers Enterprises LLC
PO Box 138 Great Bend KS 67530
1-800-792-6902

Printed: 2014.02.20 @ 06:19:28



DRILL STEM TEST REPORT

F.G.Holl Company LLC

6-21s-15w

9431 East Central Suite 100
Wichita, Kansas 67206

Smith "F" #1-6

Job Ticket: 17123

DST#: 2

ATTN: Ryan Greenbaum

Test Start: 2014.02.20 @ 00:00:00

GENERAL INFORMATION:

Formation: **Viola Chert**

Deviated: No Whipstock: ft (KB)

Time Tool Opened: 00:00:00

Time Test Ended: 00:00:00

Test Type: Conventional Bottom Hole (Initial)

Tester: Gene Budig

Unit No: 3335

Interval: **3648.00 ft (KB) To 3699.00 ft (KB) (TVD)**

Reference Elevations: 1968.00 ft (KB)

Total Depth: 3699.00 ft (KB) (TVD)

1960.00 ft (CF)

Hole Diameter: 7.88 inches Hole Condition: Fair

KB to GR/CF: 8.00 ft

Serial #: **6748** Outside

Press@RunDepth: 151.77 psig @ 3695.40 ft (KB)

Capacity: 5000.00 psig

Start Date: 2014.02.20

End Date: 2014.02.20

Last Calib.: 2014.02.20

Start Time: 10:45:00

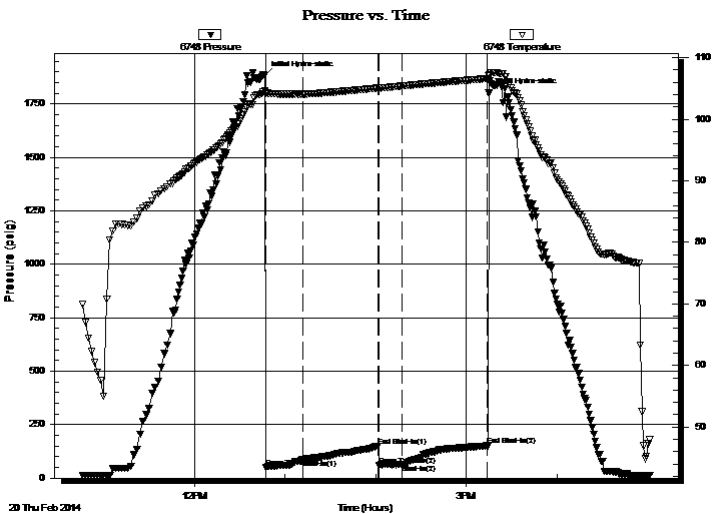
End Time: 17:02:00

Time On Btm: 2014.02.20 @ 12:46:30

Time Off Btm: 2014.02.20 @ 15:15:00

TEST COMMENT: 1st Opening 15 Minutes Weak building blow built to 7 inches into the water
 1st Shut-In 60 Minutes-No blow back
 2nd Opening 15 Minutes Very weak surface blow for 12 minutes and died
 2nd Shut-In 60 Minutes no blow back

PRESSURE SUMMARY



Time (Min.)	Pressure (psig)	Temp (deg F)	Annotation
0	1884.32	104.55	Initial Hydro-static
1	51.66	104.23	Open To Flow (1)
26	87.76	104.06	Shut-In(1)
75	147.98	105.06	End Shut-In(1)
76	61.64	105.06	Open To Flow (2)
91	63.28	105.39	Shut-In(2)
148	151.77	106.61	End Shut-In(2)
149	1801.27	107.11	Final Hydro-static

Recovery

Length (ft)	Description	Volume (bbl)
30.00	Drilling mud	0.42

Gas Rates

	Choke (inches)	Pressure (psig)	Gas Rate (Mcf/d)



DRILL STEM TEST REPORT

F.G.Holl Company LLC

6-21s-15w

9431 East Central Suite 100
Wichita, Kansas 67206

Smith "F" #1-6

Job Ticket: 17123

DST#: 2

ATTN: Ryan Greenbaum

Test Start: 2014.02.20 @ 00:00:00

GENERAL INFORMATION:

Formation: **Viola Chert**

Deviated: No Whipstock: ft (KB)

Time Tool Opened: 00:00:00

Time Test Ended: 00:00:00

Test Type: Conventional Bottom Hole (Initial)

Tester: Gene Budig

Unit No: 3335

Interval: **3648.00 ft (KB) To 3699.00 ft (KB) (TVD)**

Reference Elevations: 1968.00 ft (KB)

Total Depth: 3699.00 ft (KB) (TVD)

1960.00 ft (CF)

Hole Diameter: 7.88 inches Hole Condition: Fair

KB to GR/CF: 8.00 ft

Serial #: **8525** Inside

Press@RunDepth: 180.11 psig @ 3694.40 ft (KB)

Capacity: 5000.00 psig

Start Date: 2014.02.20

End Date: 2014.02.20

Last Calib.: 2014.02.20

Start Time: 10:45:00

End Time: 17:04:00

Time On Btm: 2014.02.20 @ 12:46:30

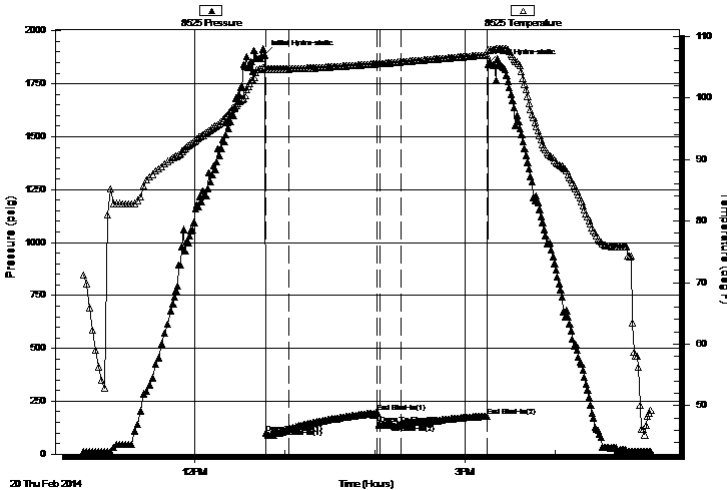
Time Off Btm: 2014.02.20 @ 15:15:30

TEST COMMENT: 1st Opening 15 Minutes Weak building blow built to 7 inches into the water
 1st Shut-In 60 Minutes-No blow back
 2nd Opening 15 Minutes Very weak surface blow for 12 minutes and died
 2nd Shut-In 60 Minutes no blow back

PRESSURE SUMMARY

Time (Min.)	Pressure (psig)	Temp (deg F)	Annotation
0	1886.08	105.07	Initial Hydro-static
1	97.15	104.65	Open To Flow (1)
16	120.14	104.68	Shut-In(1)
75	195.59	105.52	End Shut-In(1)
77	138.64	105.53	Open To Flow (2)
91	140.84	105.82	Shut-In(2)
148	180.11	106.94	End Shut-In(2)
149	1843.31	107.83	Final Hydro-static

Pressure vs. Time



Recovery

Length (ft)	Description	Volume (bbl)
30.00	Drilling mud	0.42

Gas Rates

	Choke (inches)	Pressure (psig)	Gas Rate (Mcf/d)



DRILL STEM TEST REPORT

TOOL DIAGRAM

F.G.Holl Company LLC

6-21s-15w

9431 East Central Suite 100
Wichita, Kansas 67206

Smith "F" #1-6

Job Ticket: 17123

DST#: 2

ATTN: Ryan Greenbaum

Test Start: 2014.02.20 @ 00:00:00

Tool Information

Drill Pipe:	Length: 3647.00 ft	Diameter: 3.80 inches	Volume: 51.16 bbl	Tool Weight: 2000.00 lb
Heavy Wt. Pipe:	Length: 0.00 ft	Diameter: 0.00 inches	Volume: 0.00 bbl	Weight set on Packer: 20000.00 lb
Drill Collar:	Length: 0.00 ft	Diameter: 0.00 inches	Volume: 0.00 bbl	Weight to Pull Loose: 64000.00 lb
			Total Volume: 51.16 bbl	Tool Chased 0.00 ft
Drill Pipe Above KB:	29.00 ft			String Weight: Initial 49000.00 lb
Depth to Top Packer:	3646.00 ft			Final 49000.00 lb
Depth to Bottom Packer:	ft			
Interval between Packers:	52.40 ft			
Tool Length:	80.40 ft			
Number of Packers:	2	Diameter: 6.75 inches		

Tool Comments:

Tool Description

Tool Description	Length (ft)	Serial No.	Position	Depth (ft)	Accum. Lengths
Shut-In Tool	5.00			3623.00	
Hydraulic Tool	5.00			3628.00	
Jars	6.00			3634.00	
Safety Joint	2.00			3636.00	
Top Packer	5.00			3641.00	
Packer	5.00			3646.00	28.00 Bottom Of Top Packer
Anchor	0.00			3646.00	
Change Over Sub	0.75			3646.75	
Drill Pipe	31.90			3678.65	
Change Over Sub	0.75			3679.40	
Anchor	14.00			3693.40	
Recorder	1.00	8525	Inside	3694.40	
Recorder	1.00	6748	Outside	3695.40	
Bull Plug	3.00			3698.40	52.40 Anchor Tool

Total Tool Length: 80.40



DRILL STEM TEST REPORT

FLUID SUMMARY

F.G.Holl Company LLC

6-21s-15w

9431 East Central Suite 100
Wichita, Kansas 67206

Smith "F" #1-6

Job Ticket: 17123

DST#: 2

ATTN: Ryan Greenbaum

Test Start: 2014.02.20 @ 00:00:00

Mud and Cushion Information

Mud Type: Gel Chem
 Mud Weight: 9.00 lb/gal
 Viscosity: 47.00 sec/qt
 Water Loss: 6.00 in³
 Resistivity: ohm.m
 Salinity: 3600.00 ppm
 Filter Cake: 1.00 inches

Cushion Type:
 Cushion Length: ft
 Cushion Volume: bbl
 Gas Cushion Type:
 Gas Cushion Pressure: psig

Oil API: deg API
 Water Salinity: ppm

Recovery Information

Recovery Table

Length ft	Description	Volume bbl
30.00	Drilling mud	0.421

Total Length: 30.00 ft Total Volume: 0.421 bbl

Num Fluid Samples: 0 Num Gas Bombs: 0 Serial #:

Laboratory Name: Laboratory Location:

Recovery Comments:

Pressure vs. Time

