



DRILL STEM TEST REPORT

Prepared For: **John O Farmer Inc**

PO Box 352
Russell KS 67665

ATTN: Austin Klaus

Gage #1

1-15s-14w Russell,KS

Start Date: 2014.01.07 @ 08:41:23

End Date: 2014.01.07 @ 15:26:43

Job Ticket #: 56033 DST #: 1

Trilobite Testing, Inc
PO Box 362 Hays, KS 67601
ph: 785-625-4778 fax: 785-625-5620

Printed: 2014.01.10 @ 14:07:17



**TRILOBITE
TESTING, INC**

DRILL STEM TEST REPORT

John O Farmer Inc

1-15s-14w Russell,KS

PO Box 352
Russell KS 67665

Gage #1

Job Ticket: 56033

DST#: 1

ATTN: Austin Klaus

Test Start: 2014.01.07 @ 08:41:23

GENERAL INFORMATION:

Formation: **LKC C**

Deviated: No Whipstock: ft (KB)

Time Tool Opened: 11:01:03

Time Test Ended: 15:26:43

Test Type: Conventional Bottom Hole (Initial)

Tester: Tate Lang

Unit No: 49

Interval: 3067.00 ft (KB) To 3096.00 ft (KB) (TVD)

Reference Elevations: 1870.00 ft (KB)

Total Depth: 3096.00 ft (KB) (TVD)

1862.00 ft (CF)

Hole Diameter: 7.88 inches Hole Condition: Good

KB to GR/CF: 8.00 ft

Serial #: 8898 Outside

Press@RunDepth: 28.24 psig @ 3068.00 ft (KB)

Capacity: 8000.00 psig

Start Date: 2014.01.07 End Date: 2014.01.07

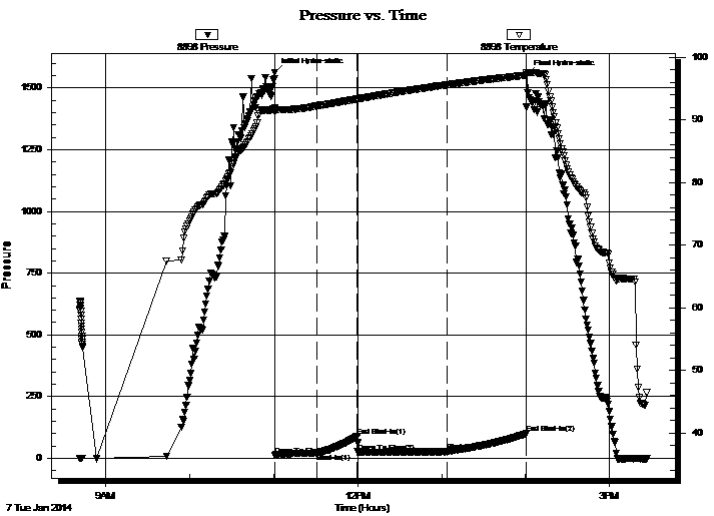
Last Calib.: 2014.01.07

Start Time: 08:41:24 End Time: 15:26:43

Time On Btm: 2014.01.07 @ 11:00:53

Time Off Btm: 2014.01.07 @ 14:00:53

TEST COMMENT: Weak surface blow built to 1 1/2"
Dead no blow back
Weak surface blow built to 3/4"
Dead no blow back



PRESSURE SUMMARY

Time (Min.)	Pressure (psig)	Temp (deg F)	Annotation
0	1563.47	91.91	Initial Hydro-static
1	13.38	91.30	Open To Flow (1)
30	21.76	92.22	Shut-In(1)
59	89.50	93.34	End Shut-In(1)
60	25.70	93.33	Open To Flow (2)
124	28.24	95.62	Shut-In(2)
180	99.42	97.13	End Shut-In(2)
180	1553.90	97.56	Final Hydro-static

Recovery

Length (ft)	Description	Volume (bbl)
10.00	100% W/ Oil Spots	0.05

Gas Rates

	Choke (inches)	Pressure (psig)	Gas Rate (Mcf/d)



**TRILOBITE
TESTING, INC**

DRILL STEM TEST REPORT

TOOL DIAGRAM

John O Farmer Inc

1-15s-14w Russell,KS

PO Box 352
Russell KS 67665

Gage #1

Job Ticket: 56033

DST#: 1

ATTN: Austin Klaus

Test Start: 2014.01.07 @ 08:41:23

Tool Information

Drill Pipe:	Length: 3035.00 ft	Diameter: 3.80 inches	Volume: 42.57 bbl	Tool Weight:	2000.00 lb
Heavy Wt. Pipe:	Length: 0.00 ft	Diameter: 0.00 inches	Volume: 0.00 bbl	Weight set on Packer:	25000.00 lb
Drill Collar:	Length: 30.00 ft	Diameter: 2.25 inches	Volume: 0.15 bbl	Weight to Pull Loose:	55000.00 lb
			<u>Total Volume: 42.72 bbl</u>	Tool Chased	0.00 ft
Drill Pipe Above KB:	18.00 ft			String Weight: Initial	45000.00 lb
Depth to Top Packer:	3067.00 ft			Final	45000.00 lb
Depth to Bottom Packer:	ft				
Interval between Packers:	29.00 ft				
Tool Length:	49.00 ft				
Number of Packers:	2	Diameter: 6.75 inches			

Tool Comments:

Tool Description

Tool Description	Length (ft)	Serial No.	Position	Depth (ft)	Accum. Lengths
Shut In Tool	5.00			3052.00	
Hydraulic tool	5.00			3057.00	
Packer	5.00			3062.00	20.00 Bottom Of Top Packer
Packer	5.00			3067.00	
Stubb	1.00			3068.00	
Recorder	0.00	8897	Inside	3068.00	
Recorder	0.00	8898	Outside	3068.00	
Perforations	25.00			3093.00	
Bullnose	3.00			3096.00	29.00 Bottom Packers & Anchor
Total Tool Length:	49.00				



**TRILOBITE
TESTING, INC**

DRILL STEM TEST REPORT

FLUID SUMMARY

John O Farmer Inc

1-15s-14w Russell,KS

PO Box 352
Russell KS 67665

Gage #1

Job Ticket: 56033

DST#: 1

ATTN: Austin Klaus

Test Start: 2014.01.07 @ 08:41:23

Mud and Cushion Information

Mud Type: Gel Chem

Cushion Type:

Oil API:

deg API

Mud Weight: 9.00 lb/gal

Cushion Length:

ft

Water Salinity:

ppm

Viscosity: 54.00 sec/qt

Cushion Volume:

bbbl

Water Loss: 7.98 in³

Gas Cushion Type:

Resistivity: ohm.m

Gas Cushion Pressure:

psig

Salinity: 3000.00 ppm

Filter Cake: 1.00 inches

Recovery Information

Recovery Table

Length ft	Description	Volume bbl
10.00	100% W/ Oil Spots	0.049

Total Length: 10.00 ft Total Volume: 0.049 bbl

Num Fluid Samples: 0

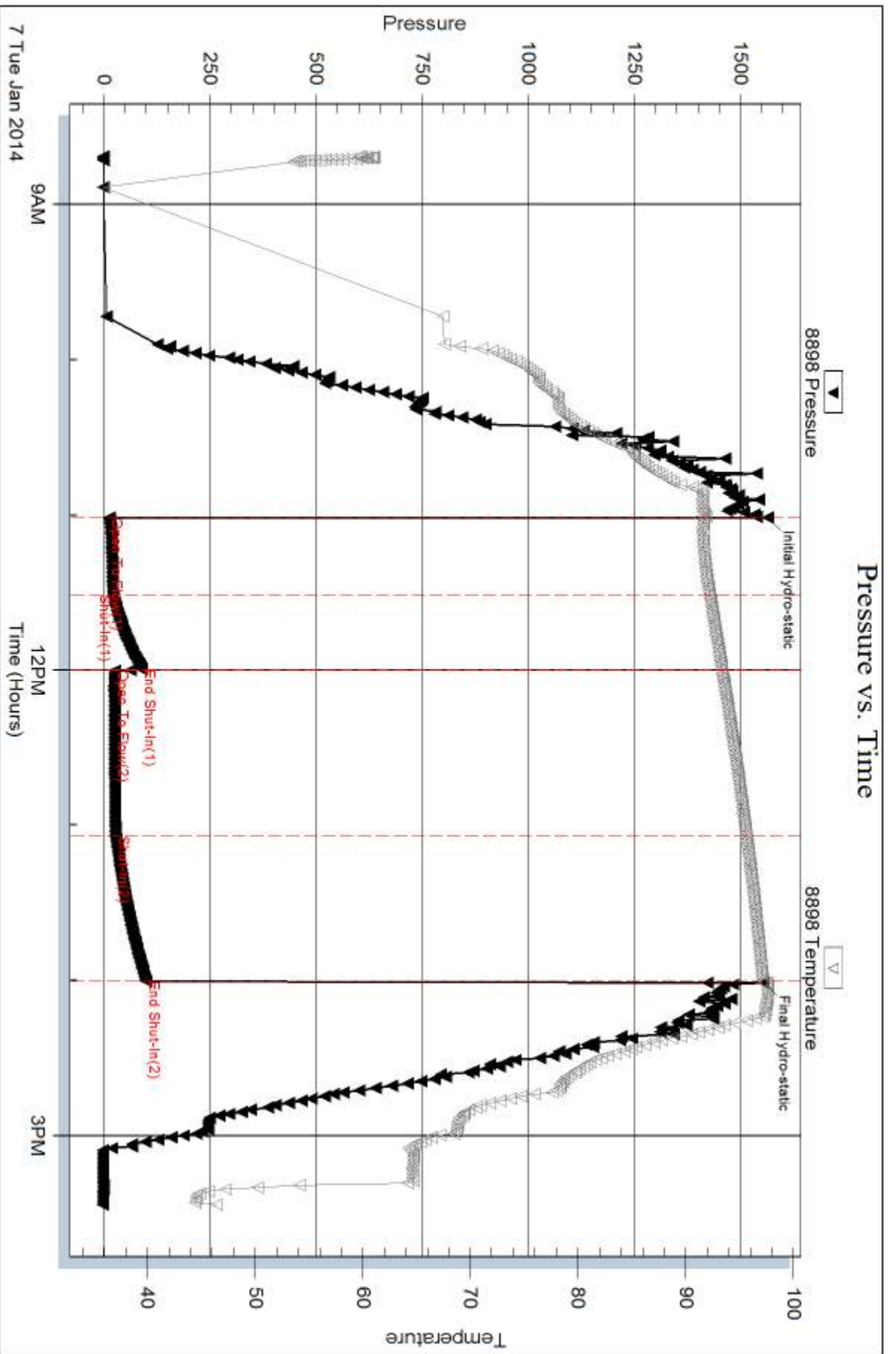
Num Gas Bombs: 0

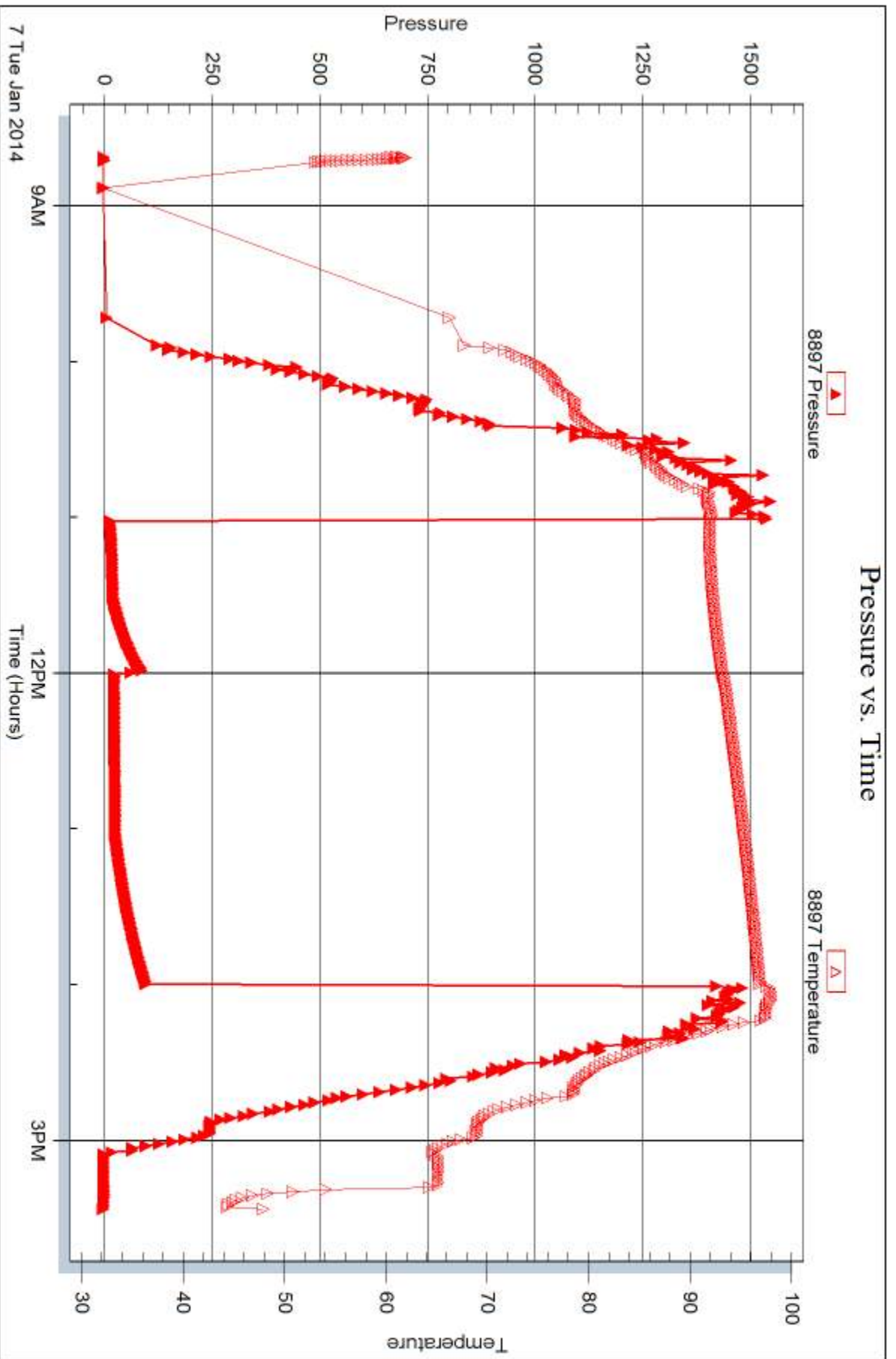
Serial #:

Laboratory Name:

Laboratory Location:

Recovery Comments:







DRILL STEM TEST REPORT

Prepared For: **John O Farmer Inc**

PO Box 352
Russell KS 67665

ATTN: Austin Klaus

Gage #1

1-15s-14w Russell,KS

Start Date: 2014.01.07 @ 22:19:05

End Date: 2014.01.08 @ 04:31:44

Job Ticket #: 56034 DST #: 2

Trilobite Testing, Inc
PO Box 362 Hays, KS 67601
ph: 785-625-4778 fax: 785-625-5620

Printed: 2014.01.10 @ 14:06:49



TRILOBITE TESTING, INC

DRILL STEM TEST REPORT

John O Farmer Inc

1-15s-14w Russell,KS

PO Box 352
Russell KS 67665

Gage #1

Job Ticket: 56034

DST#: 2

ATTN: Austin Klaus

Test Start: 2014.01.07 @ 22:19:05

GENERAL INFORMATION:

Formation: **LKC E,F**

Deviated: No Whipstock: ft (KB)

Time Tool Opened: 00:01:55

Time Test Ended: 04:31:44

Test Type: Conventional Bottom Hole (Reset)

Tester: Tate Lang

Unit No: 49

Interval: 3106.00 ft (KB) To 3136.00 ft (KB) (TVD)

Reference Elevations: 1870.00 ft (KB)

Total Depth: 3136.00 ft (KB) (TVD)

1862.00 ft (CF)

Hole Diameter: 7.88 inches Hole Condition: Good

KB to GR/CF: 8.00 ft

Serial #: 8898 Outside

Press@RunDepth: 22.82 psig @ 3107.00 ft (KB)

Capacity: 8000.00 psig

Start Date: 2014.01.07

End Date:

2014.01.08

Last Calib.:

2014.01.08

Start Time: 22:19:06

End Time:

04:31:45

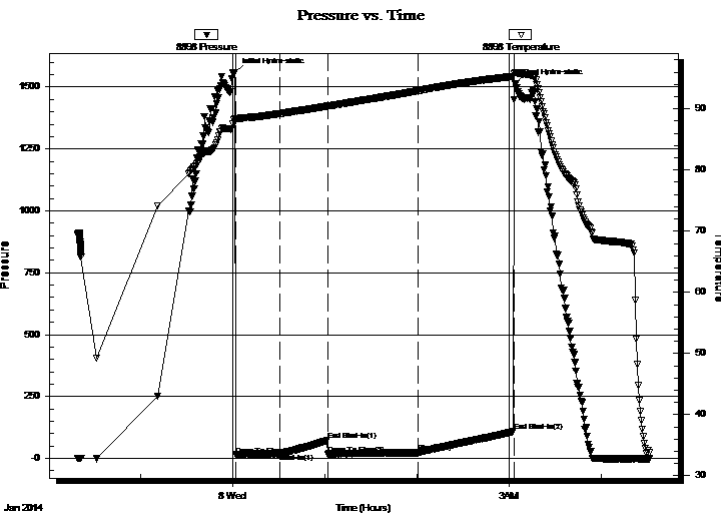
Time On Btm:

2014.01.08 @ 00:01:35

Time Off Btm:

2014.01.08 @ 03:04:05

TEST COMMENT: Fair surface blow built to 5"
Dead no blow back
Fair surface blow built to 6 1/2"
Dead no blow back



PRESSURE SUMMARY

Time (Min.)	Pressure (psig)	Temp (deg F)	Annotation
0	1559.35	88.39	Initial Hydro-static
1	14.45	88.02	Open To Flow (1)
29	19.83	89.21	Shut-In(1)
61	71.69	90.44	End Shut-In(1)
61	15.75	90.44	Open To Flow (2)
120	22.82	92.96	Shut-In(2)
182	108.33	95.33	End Shut-In(2)
183	1513.09	95.96	Final Hydro-static

Recovery

Length (ft)	Description	Volume (bbl)
30.00	8%O 92%M	0.15
0.00	30' Weak GIP	0.00

* Recovery from multiple tests

Gas Rates

	Choke (inches)	Pressure (psig)	Gas Rate (Mcf/d)



**TRILOBITE
TESTING, INC**

DRILL STEM TEST REPORT

TOOL DIAGRAM

John O Farmer Inc

1-15s-14w Russell,KS

PO Box 352
Russell KS 67665

Gage #1

Job Ticket: 56034

DST#: 2

ATTN: Austin Klaus

Test Start: 2014.01.07 @ 22:19:05

Tool Information

Drill Pipe:	Length: 3067.00 ft	Diameter: 3.80 inches	Volume: 43.02 bbl	Tool Weight:	2000.00 lb
Heavy Wt. Pipe:	Length: 0.00 ft	Diameter: 0.00 inches	Volume: 0.00 bbl	Weight set on Packer:	20000.00 lb
Drill Collar:	Length: 30.00 ft	Diameter: 2.25 inches	Volume: 0.15 bbl	Weight to Pull Loose:	50000.00 lb
			<u>Total Volume: 43.17 bbl</u>	Tool Chased	0.00 ft
Drill Pipe Above KB:	11.00 ft			String Weight: Initial	47000.00 lb
Depth to Top Packer:	3106.00 ft			Final	47000.00 lb
Depth to Bottom Packer:	ft				
Interval between Packers:	30.00 ft				
Tool Length:	50.00 ft				
Number of Packers:	2	Diameter: 6.75 inches			
Tool Comments:					

Tool Description

Tool Description	Length (ft)	Serial No.	Position	Depth (ft)	Accum. Lengths
Shut In Tool	5.00			3091.00	
Hydraulic tool	5.00			3096.00	
Packer	5.00			3101.00	20.00 Bottom Of Top Packer
Packer	5.00			3106.00	
Stubb	1.00			3107.00	
Recorder	0.00	8897	Inside	3107.00	
Recorder	0.00	8898	Outside	3107.00	
Perforations	26.00			3133.00	
Bullnose	3.00			3136.00	30.00 Bottom Packers & Anchor
Total Tool Length:	50.00				



**TRILOBITE
TESTING, INC**

DRILL STEM TEST REPORT

FLUID SUMMARY

John O Farmer Inc

1-15s-14w Russell,KS

PO Box 352
Russell KS 67665

Gage #1

Job Ticket: 56034

DST#: 2

ATTN: Austin Klaus

Test Start: 2014.01.07 @ 22:19:05

Mud and Cushion Information

Mud Type: Gel Chem

Cushion Type:

Oil API:

deg API

Mud Weight: 9.00 lb/gal

Cushion Length: ft

Water Salinity: ppm

Viscosity: 56.00 sec/qt

Cushion Volume: bbl

Water Loss: 7.98 in³

Gas Cushion Type:

Resistivity: ohm.m

Gas Cushion Pressure: psig

Salinity: 5000.00 ppm

Filter Cake: 1.00 inches

Recovery Information

Recovery Table

Length ft	Description	Volume bbl
30.00	8%O 92%M	0.148
0.00	30' Weak GIP	0.000

Total Length: 30.00 ft Total Volume: 0.148 bbl

Num Fluid Samples: 0

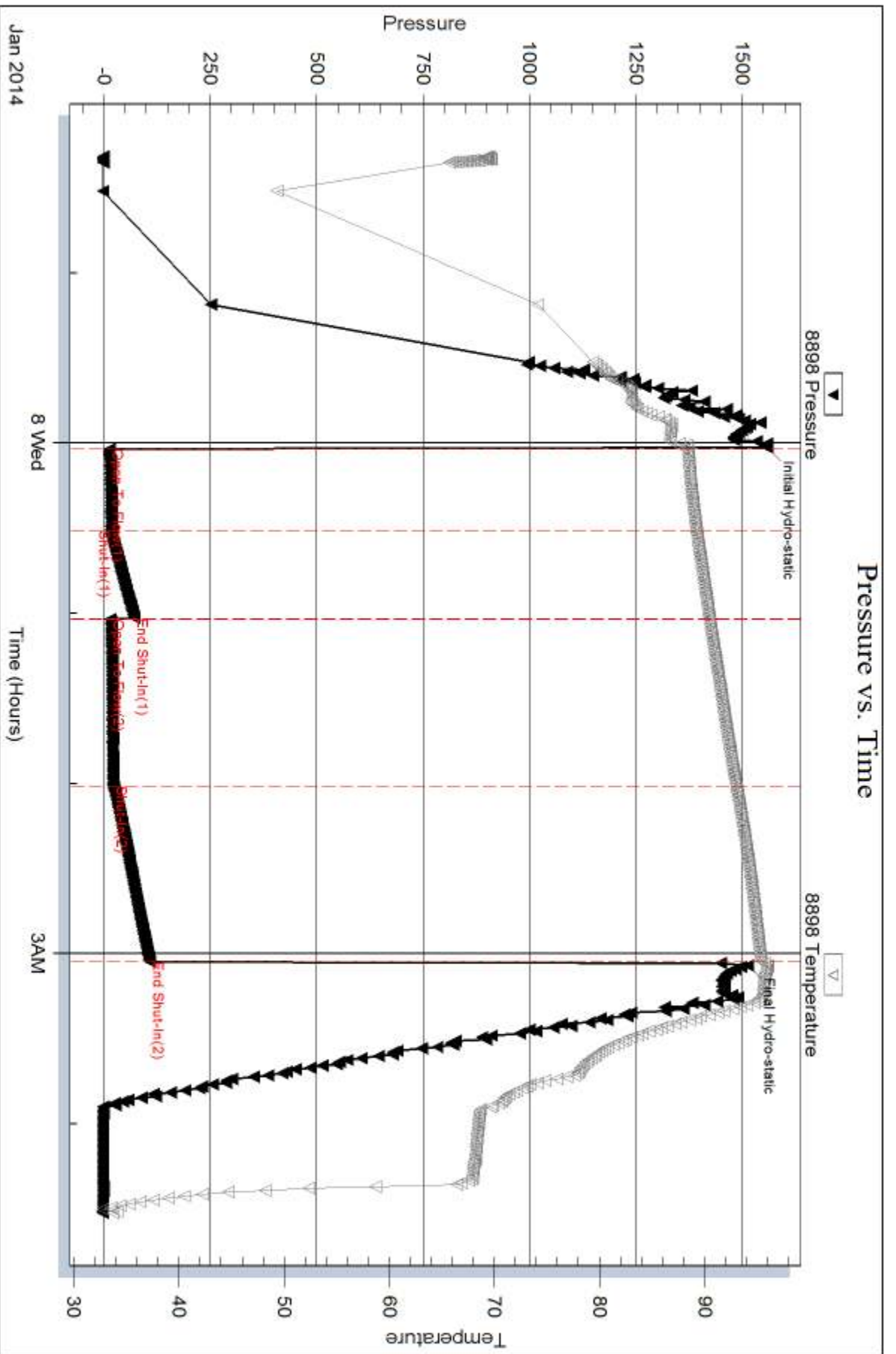
Num Gas Bombs: 0

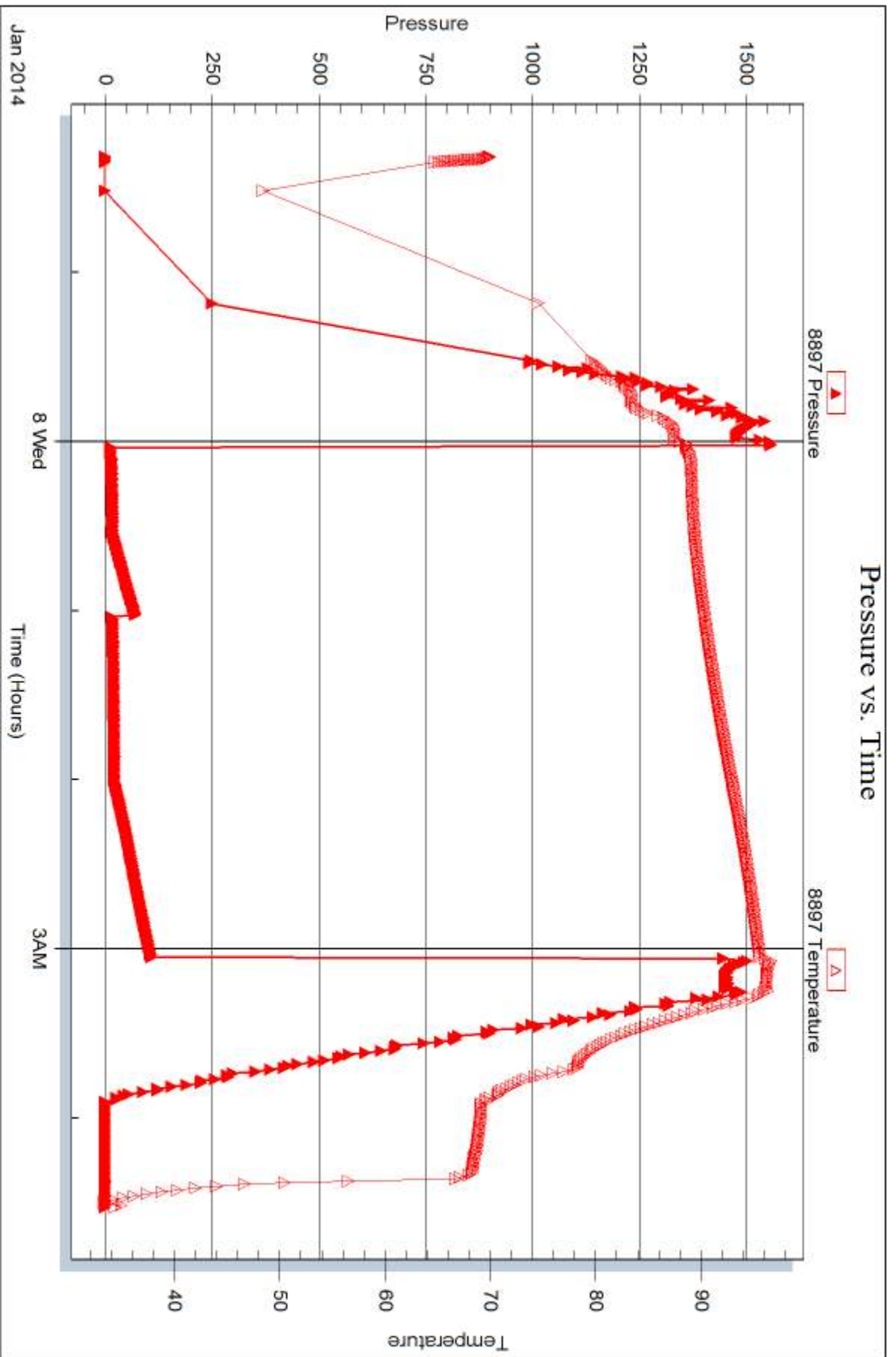
Serial #:

Laboratory Name:

Laboratory Location:

Recovery Comments:







DRILL STEM TEST REPORT

Prepared For: **John O Farmer Inc**

PO Box 352
Russell KS 67665

ATTN: Austin Klaus

Gage #1

1-15s-14w Russell,KS

Start Date: 2014.01.08 @ 18:10:46

End Date: 2014.01.08 @ 23:39:36

Job Ticket #: 56035 DST #: 3

Trilobite Testing, Inc
PO Box 362 Hays, KS 67601
ph: 785-625-4778 fax: 785-625-5620

Printed: 2014.01.10 @ 14:05:00



TRILOBITE TESTING, INC

DRILL STEM TEST REPORT

John O Farmer Inc

1-15s-14w Russell,KS

PO Box 352
Russell KS 67665

Gage #1

Job Ticket: 56035

DST#: 3

ATTN: Austin Klaus

Test Start: 2014.01.08 @ 18:10:46

GENERAL INFORMATION:

Formation: **Lower LKC**

Deviated: No Whipstock: ft (KB)

Time Tool Opened: 20:07:06

Time Test Ended: 23:39:36

Test Type: Conventional Bottom Hole (Reset)

Tester: Tate Lang

Unit No: 49

Interval: 3200.00 ft (KB) To 3300.00 ft (KB) (TVD)

Reference Elevations: 1870.00 ft (KB)

Total Depth: 3300.00 ft (KB) (TVD)

1862.00 ft (CF)

Hole Diameter: 7.88 inches Hole Condition: Good

KB to GR/CF: 8.00 ft

Serial #: 8898 Outside

Press@RunDepth: 21.68 psig @ 3203.00 ft (KB)

Capacity: 8000.00 psig

Start Date: 2014.01.08

End Date:

2014.01.08

Last Calib.:

2014.01.08

Start Time: 18:10:47

End Time:

23:39:36

Time On Btm:

2014.01.08 @ 20:06:56

Time Off Btm:

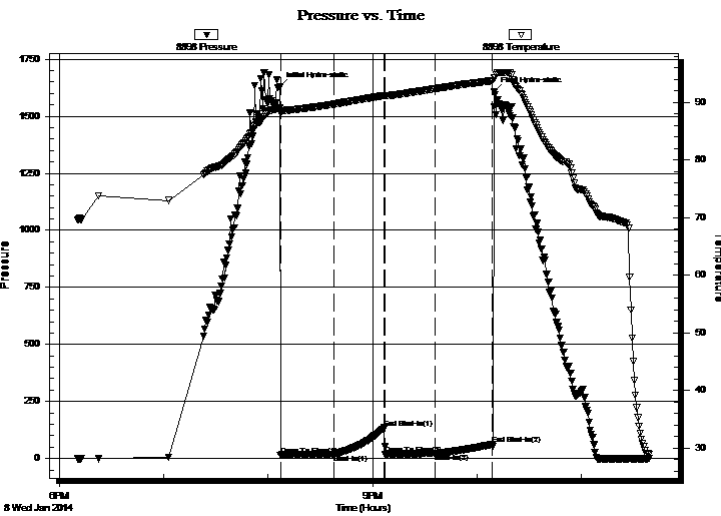
2014.01.08 @ 22:09:56

TEST COMMENT: Weak surface blow built to 1"

Dead no blow back

Weak surface blow

Dead no blow back



PRESSURE SUMMARY

Time (Min.)	Pressure (psig)	Temp (deg F)	Annotation
0	1630.73	88.97	Initial Hydro-static
1	15.15	88.12	Open To Flow (1)
31	19.49	89.66	Shut-In(1)
60	134.05	91.16	End Shut-In(1)
61	19.92	91.14	Open To Flow (2)
89	21.68	92.37	Shut-In(2)
122	60.67	93.74	End Shut-In(2)
123	1605.95	94.21	Final Hydro-static

Recovery

Length (ft)	Description	Volume (bbl)
10.00	100%M W/ Oil Spots	0.05

* Recovery from multiple tests

Gas Rates

	Choke (inches)	Pressure (psig)	Gas Rate (Mcf/d)



**TRILOBITE
TESTING, INC**

DRILL STEM TEST REPORT

TOOL DIAGRAM

John O Farmer Inc

1-15s-14w Russell,KS

PO Box 352
Russell KS 67665

Gage #1

Job Ticket: 56035

DST#: 3

ATTN: Austin Klaus

Test Start: 2014.01.08 @ 18:10:46

Tool Information

Drill Pipe:	Length: 3160.00 ft	Diameter: 3.80 inches	Volume: 44.33 bbl	Tool Weight:	2000.00 lb
Heavy Wt. Pipe:	Length: 0.00 ft	Diameter: 0.00 inches	Volume: 0.00 bbl	Weight set on Packer:	20000.00 lb
Drill Collar:	Length: 30.00 ft	Diameter: 2.25 inches	Volume: 0.15 bbl	Weight to Pull Loose:	56000.00 lb
			<u>Total Volume: 44.48 bbl</u>	Tool Chased	0.00 ft
Drill Pipe Above KB:	10.00 ft			String Weight: Initial	47000.00 lb
Depth to Top Packer:	3200.00 ft			Final	47000.00 lb
Depth to Bottom Packer:	ft				
Interval between Packers:	100.00 ft				
Tool Length:	120.00 ft				
Number of Packers:	2	Diameter: 6.75 inches			
Tool Comments:					

Tool Description	Length (ft)	Serial No.	Position	Depth (ft)	Accum. Lengths
------------------	-------------	------------	----------	------------	----------------

Shut In Tool	5.00			3185.00	
Hydraulic tool	5.00			3190.00	
Packer	5.00			3195.00	20.00 Bottom Of Top Packer
Packer	5.00			3200.00	
Stubb	1.00			3201.00	
Perforations	2.00			3203.00	
Recorder	0.00	8897	Inside	3203.00	
Recorder	0.00	8898	Outside	3203.00	
Perforations	29.00			3232.00	
Change Over Sub	1.00			3233.00	
Drill Pipe	63.00			3296.00	
Change Over Sub	1.00			3297.00	
Bullnose	3.00			3300.00	100.00 Bottom Packers & Anchor

Total Tool Length: 120.00



**TRILOBITE
TESTING, INC**

DRILL STEM TEST REPORT

FLUID SUMMARY

John O Farmer Inc

1-15s-14w Russell,KS

PO Box 352
Russell KS 67665

Gage #1

Job Ticket: 56035

DST#: 3

ATTN: Austin Klaus

Test Start: 2014.01.08 @ 18:10:46

Mud and Cushion Information

Mud Type: Gel Chem

Cushion Type:

Oil API:

deg API

Mud Weight: 9.00 lb/gal

Cushion Length:

ft

Water Salinity:

ppm

Viscosity: 65.00 sec/qt

Cushion Volume:

bbf

Water Loss: 7.98 in³

Gas Cushion Type:

Resistivity: ohm.m

Gas Cushion Pressure:

psig

Salinity: 5000.00 ppm

Filter Cake: 1.00 inches

Recovery Information

Recovery Table

Length ft	Description	Volume bbf
10.00	100%M W/ Oil Spots	0.049

Total Length: 10.00 ft Total Volume: 0.049 bbf

Num Fluid Samples: 0

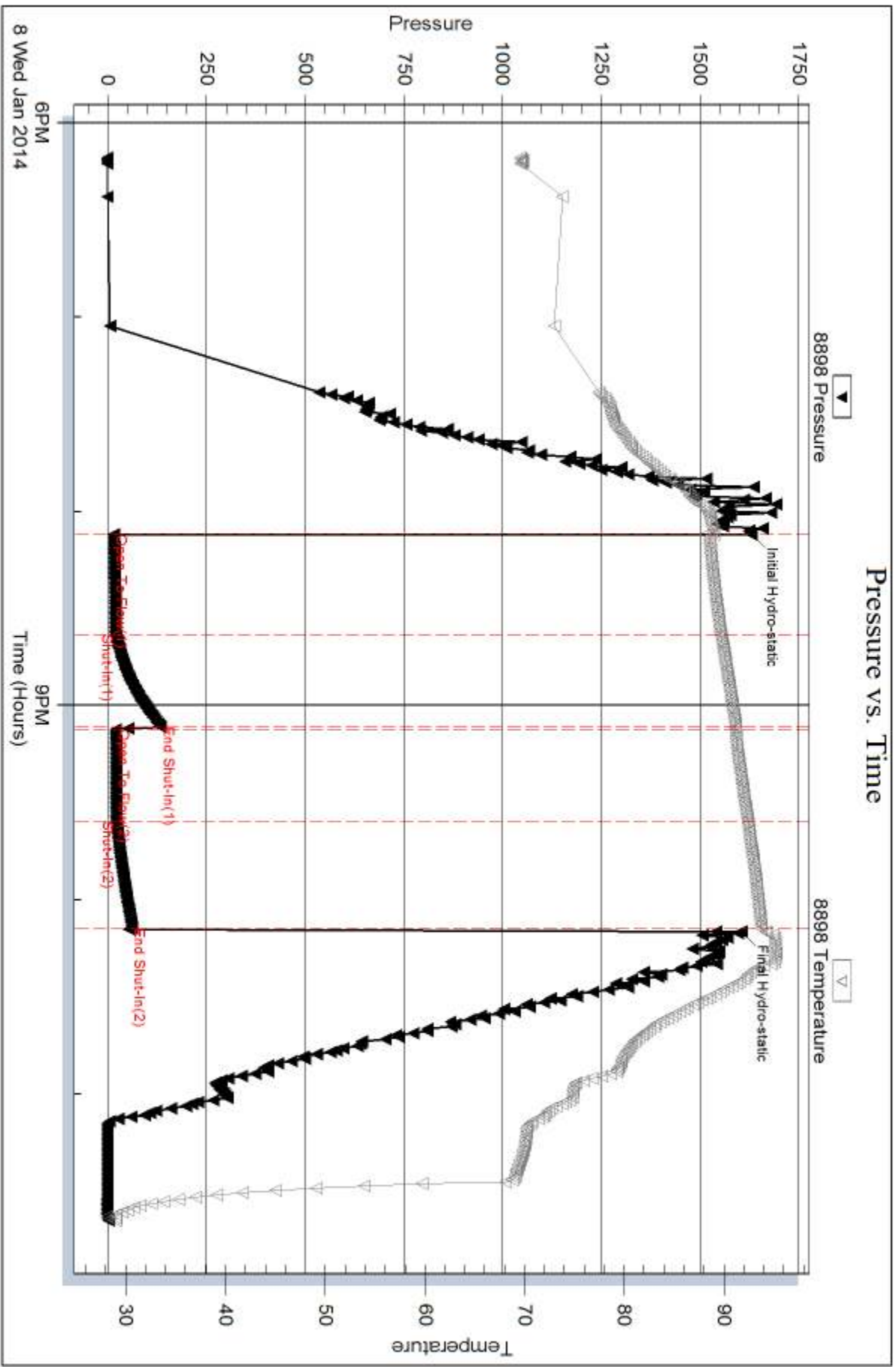
Num Gas Bombs: 0

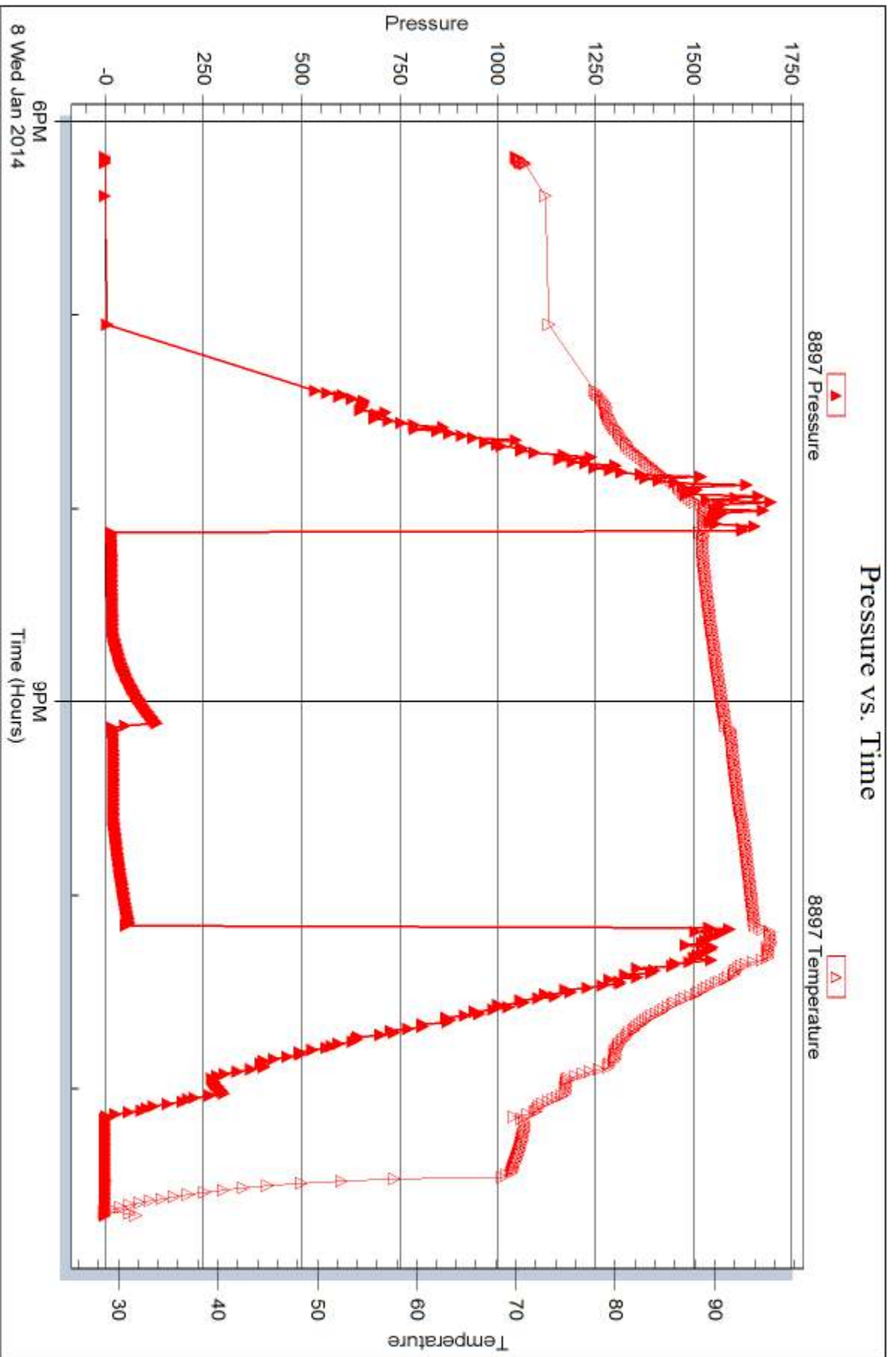
Serial #:

Laboratory Name:

Laboratory Location:

Recovery Comments:







DRILL STEM TEST REPORT

Prepared For: **John O Farmer Inc**

PO Box 352
Russell KS 67665

ATTN: Austin Klaus

Gage #1

1-15s-14w Russell,KS

Start Date: 2014.01.09 @ 12:54:07

End Date: 2014.01.09 @ 18:51:46

Job Ticket #: 56036 DST #: 4

Trilobite Testing, Inc
PO Box 362 Hays, KS 67601
ph: 785-625-4778 fax: 785-625-5620

Printed: 2014.01.10 @ 14:04:19



TRILOBITE TESTING, INC.

DRILL STEM TEST REPORT

John O Farmer Inc

1-15s-14w Russell,KS

PO Box 352
Russell KS 67665

Gage #1

Job Ticket: 56036

DST#: 4

ATTN: Austin Klaus

Test Start: 2014.01.09 @ 12:54:07

GENERAL INFORMATION:

Formation: **Arblucke**

Deviated: No Whipstock: ft (KB)

Time Tool Opened: 14:23:37

Time Test Ended: 18:51:46

Test Type: Conventional Straddle (Reset)

Tester: Tate Lang

Unit No: 49

Interval: 3330.00 ft (KB) To 3340.00 ft (KB) (TVD)

Reference Elevations: 1870.00 ft (KB)

Total Depth: 3400.00 ft (KB) (TVD)

1862.00 ft (CF)

Hole Diameter: 7.88 inches Hole Condition: Good

KB to GR/CF: 8.00 ft

Serial #: 8898 Outside

Press@RunDepth: 94.90 psig @ 3331.00 ft (KB)

Capacity: 8000.00 psig

Start Date: 2014.01.09

End Date:

2014.01.09

Last Calib.:

2014.01.09

Start Time: 12:54:08

End Time:

18:51:47

Time On Btm:

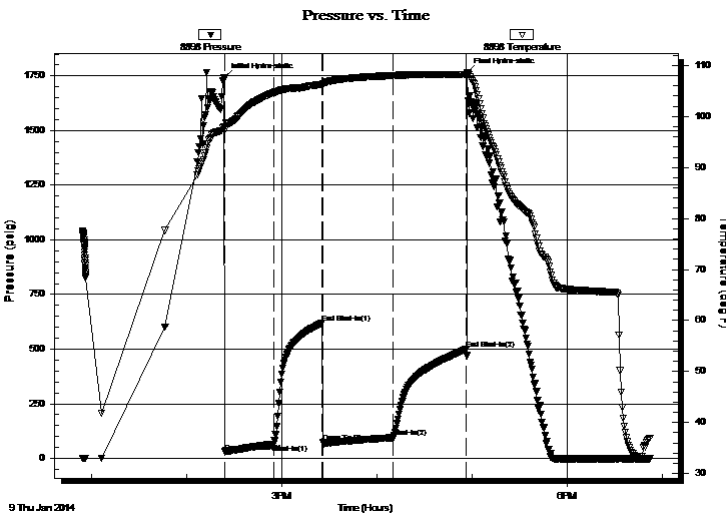
2014.01.09 @ 14:23:27

Time Off Btm:

2014.01.09 @ 16:56:57

TEST COMMENT: B.O.B. In 11 mins
Weak surface blow back built to 1/2 in
B.O.B. In 30 mins
Weak surface blow back

PRESSURE SUMMARY



Time (Min.)	Pressure (psig)	Temp (deg F)	Annotation
0	1742.01	98.02	Initial Hydro-static
1	29.33	97.33	Open To Flow (1)
32	64.75	104.63	Shut-In(1)
62	619.82	106.27	End Shut-In(1)
63	74.85	106.21	Open To Flow (2)
107	94.90	108.02	Shut-In(2)
153	498.21	108.21	End Shut-In(2)
154	1764.91	108.64	Final Hydro-static

Recovery

Length (ft)	Description	Volume (bbl)
60.00	5%G 5%O 30%W 60%M	0.57
150.00	20%G 80%O	2.10
0.00	270 GIP	0.00

Gas Rates

	Choke (inches)	Pressure (psig)	Gas Rate (Mcf/d)

* Recovery from multiple tests



**TRILOBITE
TESTING, INC**

DRILL STEM TEST REPORT

TOOL DIAGRAM

John O Farmer Inc

1-15s-14w Russell,KS

PO Box 352
Russell KS 67665

Gage #1

Job Ticket: 56036

DST#: 4

ATTN: Austin Klaus

Test Start: 2014.01.09 @ 12:54:07

Tool Information

Drill Pipe:	Length: 3279.00 ft	Diameter: 3.80 inches	Volume: 46.00 bbl	Tool Weight:	2000.00 lb
Heavy Wt. Pipe:	Length: 0.00 ft	Diameter: 0.00 inches	Volume: 0.00 bbl	Weight set on Packer:	22000.00 lb
Drill Collar:	Length: 30.00 ft	Diameter: 2.25 inches	Volume: 0.15 bbl	Weight to Pull Loose:	55000.00 lb
			<u>Total Volume: 46.15 bbl</u>	Tool Chased	0.00 ft
Drill Pipe Above KB:	6.00 ft			String Weight: Initial	50000.00 lb
Depth to Top Packer:	3330.00 ft			Final	52000.00 lb
Depth to Bottom Packer:	3340.00 ft				
Interval between Packers:	10.00 ft				
Tool Length:	100.00 ft				
Number of Packers:	2	Diameter: 6.75 inches			

Tool Comments:

Tool Description

Length (ft) Serial No. Position Depth (ft) Accum. Lengths

Shut In Tool	5.00			3308.00	
Hydraulic tool	5.00			3313.00	
Jars	5.00			3318.00	
Safety Joint	2.00			3320.00	
Packer	5.00			3325.00	27.00 Bottom Of Top Packer
Packer	5.00			3330.00	
Stubb	1.00			3331.00	
Recorder	0.00	8897	Inside	3331.00	
Recorder	0.00	8898	Outside	3331.00	
Perforations	5.00			3336.00	
Blank Off Sub	1.00			3337.00	
Blank Spacing	3.00			3340.00	10.00 Tool Interval
Packer	5.00			3345.00	
Stubb	1.00			3346.00	
Perforations	23.00			3369.00	
Recorder	0.00	8354	Below	3369.00	
Change Over Sub	1.00			3370.00	
Blank Spacing	31.00			3401.00	
Change Over Sub	1.00			3402.00	
Bullnose	1.00			3403.00	63.00 Bottom Packers & Anchor

Total Tool Length: 100.00



**TRILOBITE
TESTING, INC**

DRILL STEM TEST REPORT

FLUID SUMMARY

John O Farmer Inc

1-15s-14w Russell,KS

PO Box 352
Russell KS 67665

Gage #1

Job Ticket: 56036

DST#: 4

ATTN: Austin Klaus

Test Start: 2014.01.09 @ 12:54:07

Mud and Cushion Information

Mud Type: Gel Chem

Cushion Type:

Oil API:

36 deg API

Mud Weight: 9.00 lb/gal

Cushion Length:

ft

Water Salinity:

ppm

Viscosity: 55.00 sec/qt

Cushion Volume:

bbbl

Water Loss: 7.98 in³

Gas Cushion Type:

Resistivity: ohm.m

Gas Cushion Pressure:

psig

Salinity: 7000.00 ppm

Filter Cake: 1.00 inches

Recovery Information

Recovery Table

Length ft	Description	Volume bbl
60.00	5%G 5%O 30%W 60%M	0.568
150.00	20%G 80%O	2.104
0.00	270 GIP	0.000

Total Length: 210.00 ft Total Volume: 2.672 bbl

Num Fluid Samples: 0

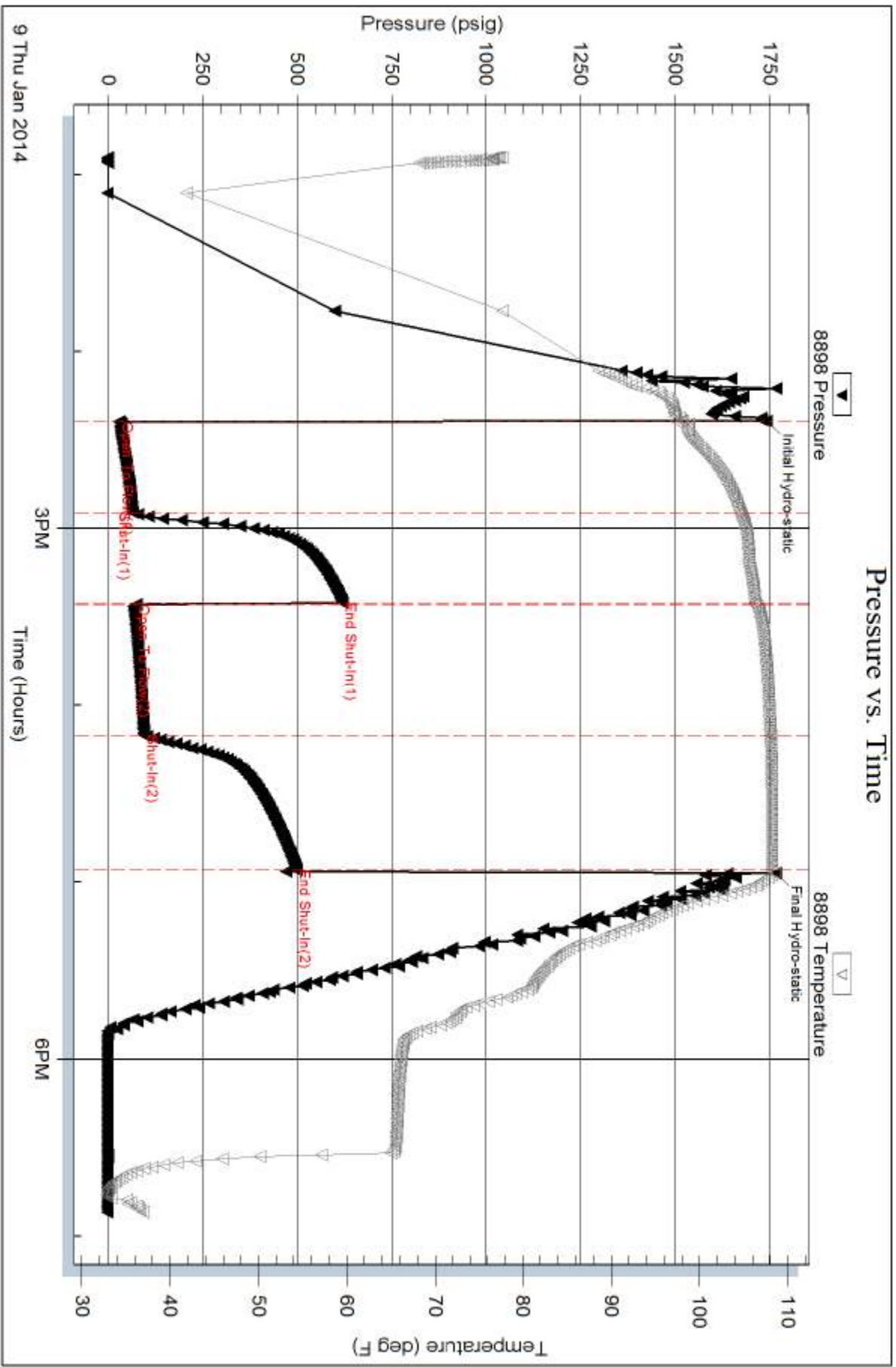
Num Gas Bombs: 0

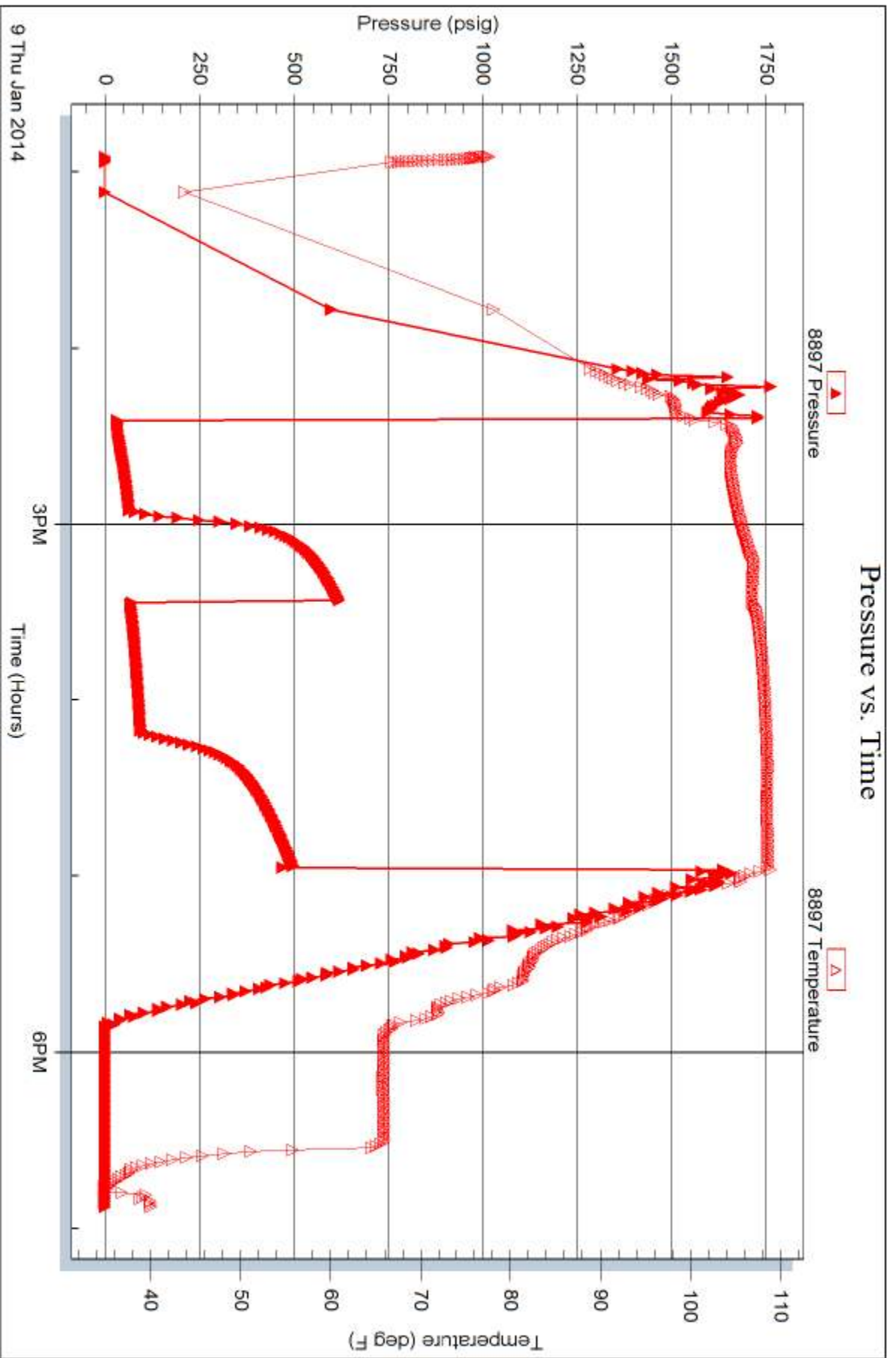
Serial #:

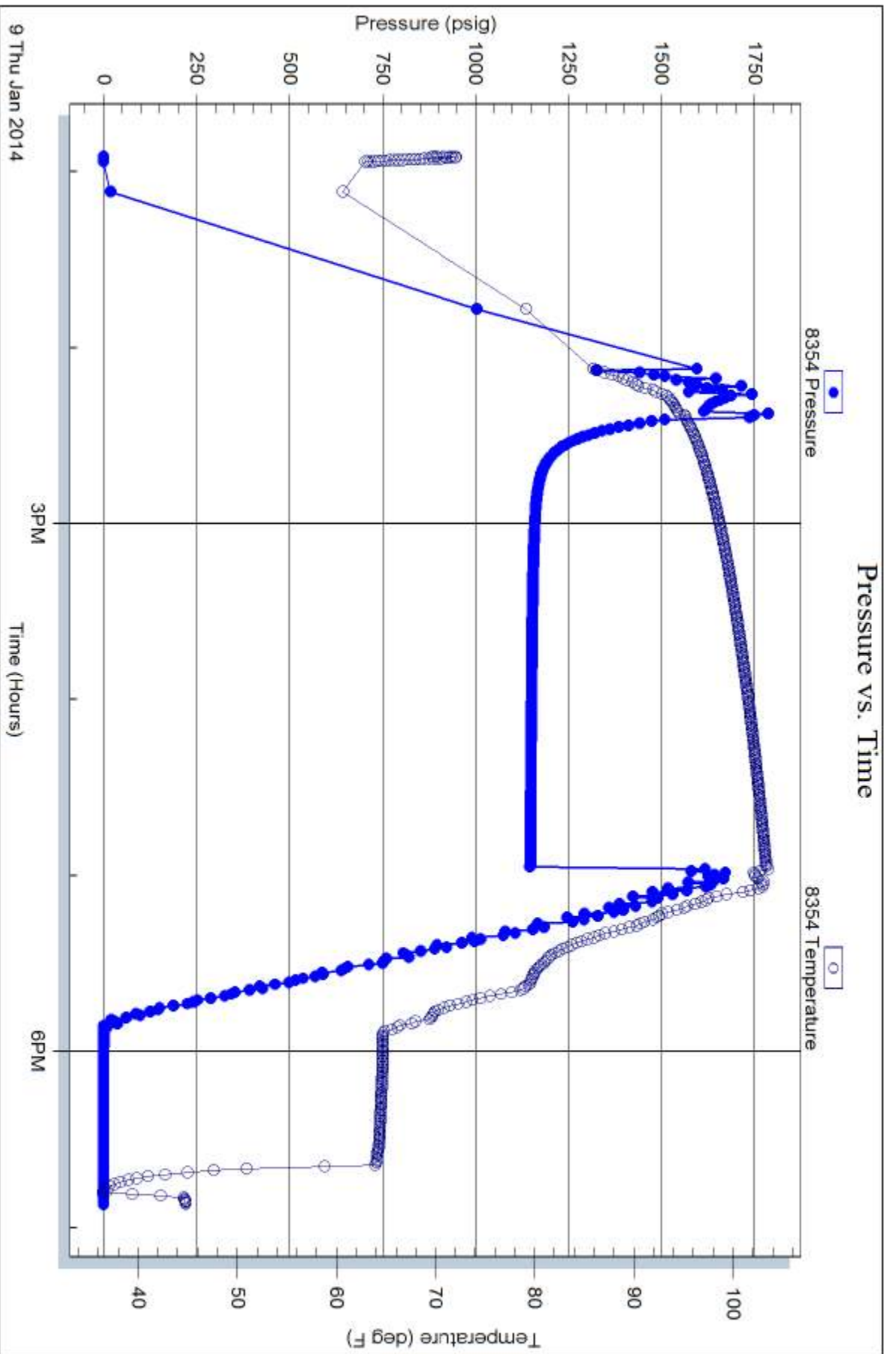
Laboratory Name:

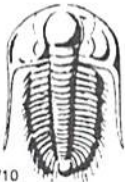
Laboratory Location:

Recovery Comments:









TRILOBITE TESTING INC.

1515 Commerce Parkway • Hays, Kansas 67601

Test Ticket

NO. 56033

4/10

Well Name & No. Gage #1 Test No. 1 Date 1-7-14
 Company John O Farmer Inc Elevation 1870 KB 1862 GL
 Address PO Box 3729 Russell KS 67665
 Co. Rep / Geo. Austin Klaus Rig Discovery #2
 Location: Sec. 1 Twp. 15S Rge. 14W Co. Russell State KS

Interval Tested 3067 3096 Zone Tested lens, C
 Anchor Length 29 Drill Pipe Run 3035 Mud Wt. 8.7
 Top Packer Depth 3063 Drill Collars Run 30 Vis 54
 Bottom Packer Depth 3067 Wt. Pipe Run 0 WL 8.0
 Total Depth 3096 Chlorides 3000 ppm System LCM
 Blow Description Weak surface blow built to 1/2 in
Dead no slow back
Weak surface blow built to 3/4 in
Dead no slow back

Rec	Feet of	%gas	%oil	%water	%mud
Rec	Feet of	%gas	%oil	%water	%mud
Rec <u>10</u>	Feet of <u>mud w/oil spots</u>	%gas	%oil	%water	<u>100</u> %mud
Rec	Feet of	%gas	%oil	%water	%mud
Rec	Feet of	%gas	%oil	%water	%mud

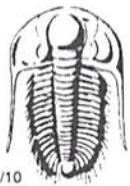
Rec Total 10 BHT 97 Gravity — API RW — @ — °F Chlorides — ppm

(A) Initial Hydrostatic 1563 Test 1150 T-On Location 06:50
 (B) First Initial Flow 13 Jars — T-Started 08:41
 (C) First Final Flow 22 Safety Joint — T-Open 11:00
 (D) Initial Shut-In 90 Circ Sub — T-Pulled 14:00
 (E) Second Initial Flow 26 Hourly Standby — T-Out 15:26
 (F) Second Final Flow 28 Mileage 72 R/T 111.60 Comments —
 (G) Final Shut-In 99 Sampler —
 (H) Final Hydrostatic 1554 Straddle — Ruined Shale Packer —
 Shale Packer — Ruined Packer —
 Extra Packer — Extra Copies —
 Initial Open 30 Extra Recorder — Sub Total 0
 Initial Shut-In 30 Day Standby — Total 1261.60
 Final Flow 60 Accessibility — MP/DST Disc't —
 Final Shut-In 60 Sub Total 1261.60

Approved By _____

Our Representative [Signature] Thanks

Trilobite Testing Inc. shall not be liable for damaged of any kind of the property or personnel of the one for whom a test is made, or for any loss suffered or sustained, directly or indirectly, through the use of its equipment, or its statements or opinion concerning the results of any test, tools lost or damaged in the hole shall be paid for at cost by the party for whom the test is made.



TRILOBITE TESTING INC.

1515 Commerce Parkway • Hays, Kansas 67601

Test Ticket

NO. 56034

Well Name & No. Gage #1 Test No. 2 Date 7-14/1-8-14
 Company John O Farmer Inc Elevation 1870 KB 1862 GL
 Address PO Box 352 Russell KS 67665
 Co. Rep / Geo. Austin Klals Rig Discovery #2
 Location: Sec. 1 Twp. 15S Rge. 14W Co. Russell State KS

Interval Tested 3106 3136 Zone Tested LHC E/F
 Anchor Length 30' Drill Pipe Run _____ Mud Wt. 9.4
 Top Packer Depth 3102 Drill Collars Run 30 Vis 50
 Bottom Packer Depth 3106 Wt. Pipe Run 0 WL 9.0
 Total Depth 3136 Chlorides 5000 ppm System LCM 1

Blow Description Fair surface slow built to 5in
Dead w/o blow back
Fair surface low built to 6 1/2 in
Dead w/o blow back

Rec	Feet of	%gas	%oil	%water	%mud
Rec <u>0</u>	Feet of <u>30 weak GIP</u>	<u>100</u>			
Rec <u>30</u>	Feet of <u>50CM</u>		<u>8</u>		<u>92</u>
Rec _____	Feet of <u>SKIN of free oil on top</u>				
Rec _____	Feet of _____				

Rec Total 30 BHT 96 Gravity _____ API RW _____ @ _____ ° F Chlorides _____ ppm

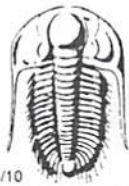
(A) Initial Hydrostatic <u>1559</u>	<input checked="" type="checkbox"/> Test <u>1150</u>	T-On Location <u>22:05</u>
(B) First Initial Flow <u>14</u>	<input type="checkbox"/> Jars _____	T-Started <u>22:19</u>
(C) First Final Flow <u>20</u>	<input type="checkbox"/> Safety Joint _____	T-Open <u>00:02 (1-8-14)</u>
(D) Initial Shut-In <u>72</u>	<input type="checkbox"/> Circ Sub _____	T-Pulled <u>03:02</u>
(E) Second Initial Flow <u>16</u>	<input type="checkbox"/> Hourly Standby _____	T-Out <u>04:32</u>
(F) Second Final Flow <u>23</u>	<input checked="" type="checkbox"/> Mileage <u>72 R/T</u> <u>111.60</u>	Comments _____
(G) Final Shut-In <u>108</u>	<input type="checkbox"/> Sampler _____	
(H) Final Hydrostatic <u>1513</u>	<input type="checkbox"/> Straddle _____	<input type="checkbox"/> Ruined Shale Packer _____

Initial Open 30
 Initial Shut-In 30
 Final Flow 60
 Final Shut-In 60

Shale Packer _____
 Extra Packer _____
 Extra Recorder _____
 Day Standby _____
 Accessibility _____

Sub Total 1261.60

Approved By _____ Our Representative [Signature]
 Trilobite Testing Inc. shall not be liable for damaged of any kind of the property or personnel of the one for whom a test is made, or for any loss suffered or sustained, directly or indirectly, through the use of its equipment, or its statements or opinion concerning the results of any test, tools lost or damaged in the hole shall be paid for at cost by the party for whom the test is made.



TRILOBITE TESTING INC.

1515 Commerce Parkway • Hays, Kansas 67601

Test Ticket

NO. **56035**

Well Name & No. Gage #1 Test No. 3 Date 1-8-14
 Company John & Farmer Inc Elevation 1870 KB 1862 GL
 Address PO Box 352 Russell MS 67665
 Co. Rep / Geo. Astin Klaus Rig Discovery #2
 Location: Sec. 1 Twp. 15S Rge. 14W Co. Russell State MS

Interval Tested 3200 3300 Zone Tested Lower LLC
 Anchor Length 100 Drill Pipe Run 3160 Mud Wt. 9.1
 Top Packer Depth 3496 Drill Collars Run 30 Vis 6.5
 Bottom Packer Depth 3200 Wt. Pipe Run 0 WL 2.0
 Total Depth 3300 Chlorides 5000 ppm System LCM 1#

Blow Description Weak surface blow built to 1 in
Dead no blow back
Weak surface blow
Dead no blow back

Rec	Feet of	%gas	%oil	%water	%mud
Rec	Feet of	%gas	%oil	%water	%mud
Rec <u>10</u>	Feet of <u>Mud w/oil spots</u>	%gas	%oil	%water	%mud
Rec	Feet of	%gas	%oil	%water	%mud
Rec	Feet of	%gas	%oil	%water	%mud

Rec Total 10 BHT 94 Gravity _____ API RW _____ @ _____ °F Chlorides _____ ppm

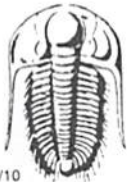
(A) Initial Hydrostatic 1631 Test 1150 T-On Location 17:45
 (B) First Initial Flow 15 Jars _____ T-Started 18:10
 (C) First Final Flow 19 Safety Joint _____ T-Open 20:06
 (D) Initial Shut-In 134 Circ Sub _____ T-Pulled 22:06
 (E) Second Initial Flow 20 Hourly Standby _____ T-Out 23:38
 (F) Second Final Flow 22 Mileage 22RH 111.60 Comments _____
 (G) Final Shut-In 61 Sampler _____
 (H) Final Hydrostatic 1606 Straddle _____ Ruined Shale Packer _____

Initial Open 30 Shale Packer _____ Ruined Packer _____
 Initial Shut-In 30 Extra Packer _____ Extra Copies _____
 Final Flow 30 Extra Recorder _____ Sub Total 0
 Final Shut-In 30 Day Standby _____ Total 1261.60
 Accessibility _____ MP/DST Disc't _____
 Sub Total 1261.60

Approved By _____

Our Representative [Signature]

Trilobite Testing Inc. shall not be liable for damaged of any kind of the property or personnel of the one for whom a test is made, or for any loss suffered or sustained, directly or indirectly, through the use of its equipment, or its statements or opinion concerning the results of any test, tools lost or damaged in the hole shall be paid for at cost by the party for whom the test is made.



TRILOBITE TESTING INC.

1515 Commerce Parkway • Hays, Kansas 67601

Test Ticket

NO. 56036

4/10

Well Name & No. Gage #1 Test No. 4 Date 1-9-14
 Company John O Farmer Inc Elevation 3170 KB 3162 GL
 Address PO Box 352 Russell MS 67665
 Co. Rep / Geo. Austin Klaus Rig Discovery #2
 Location: Sec. 1 Twp. 15S Rge. 14W Co. Russell State KS

Interval Tested 3330 3340 Zone Tested Arbuckle
 Anchor Length 10' 60' Tail Drill Pipe Run _____ Mud Wt. 9.4
 Top Packer Depth _____ Drill Collars Run 30 Vis 55
 Bottom Packer Depth 3330 Wt. Pipe Run 0 WL 8.0
 Total Depth 3400 Chlorides 7000 ppm System LCM 1A

Blow Description A.D.B. In 11 mins
Weak surface blow back built to 1/2 in
B.D.B. In 30 mins
Weak surface blow

Rec	Feet of	%gas	%oil	%water	%mud
Rec <u>0</u>	Feet of <u>270 GIP</u>	<u>100</u>			
Rec <u>150</u>	Feet of <u>60</u>	<u>20</u>	<u>80</u>		
Rec <u>60</u>	Feet of <u>60 GDCWM</u>	<u>5</u>	<u>5</u>	<u>30</u>	<u>60</u>
Rec _____	Feet of _____	%gas	%oil	%water	%mud

Rec Total 210 BHT 106 Gravity 36 API RW _____ @ _____ ° F Chlorides _____ ppm

(A) Initial Hydrostatic 1742 Test 1150 T-On Location 11:50
 (B) First Initial Flow 29 Jars _____ T-Started 12:54
 (C) First Final Flow 65 Safety Joint _____ T-Open 14:25
 (D) Initial Shut-In 620 Circ Sub _____ T-Pulled 16:55
 (E) Second Initial Flow 75 Hourly Standby _____ T-Out _____
 (F) Second Final Flow 95 Mileage 72 R17 111.60 Comments _____
 (G) Final Shut-In 498 Sampler _____
 (H) Final Hydrostatic 1765 Straddle 600 Ruined Shale Packer _____

Initial Open 30 Shale Packer _____ Ruined Packer _____
 Initial Shut-In 30 Extra Packer _____ Extra Copies _____
 Final Flow 45 45 Extra Recorder _____ Sub Total 0
 Final Shut-In _____ Day Standby _____ Total 1861.60
 _____ Accessibility _____ MP/DST Disc't _____
 Sub Total 1861.60

Approved By _____ Our Representative [Signature]

Trilobite Testing Inc. shall not be liable for damaged of any kind of the property or personnel of the one for whom a test is made, or for any loss suffered or sustained, directly or indirectly, through the use of its equipment, or its statements or opinion concerning the results of any test, tools lost or damaged in the hole shall be paid for at cost by the party for whom the test is made.