

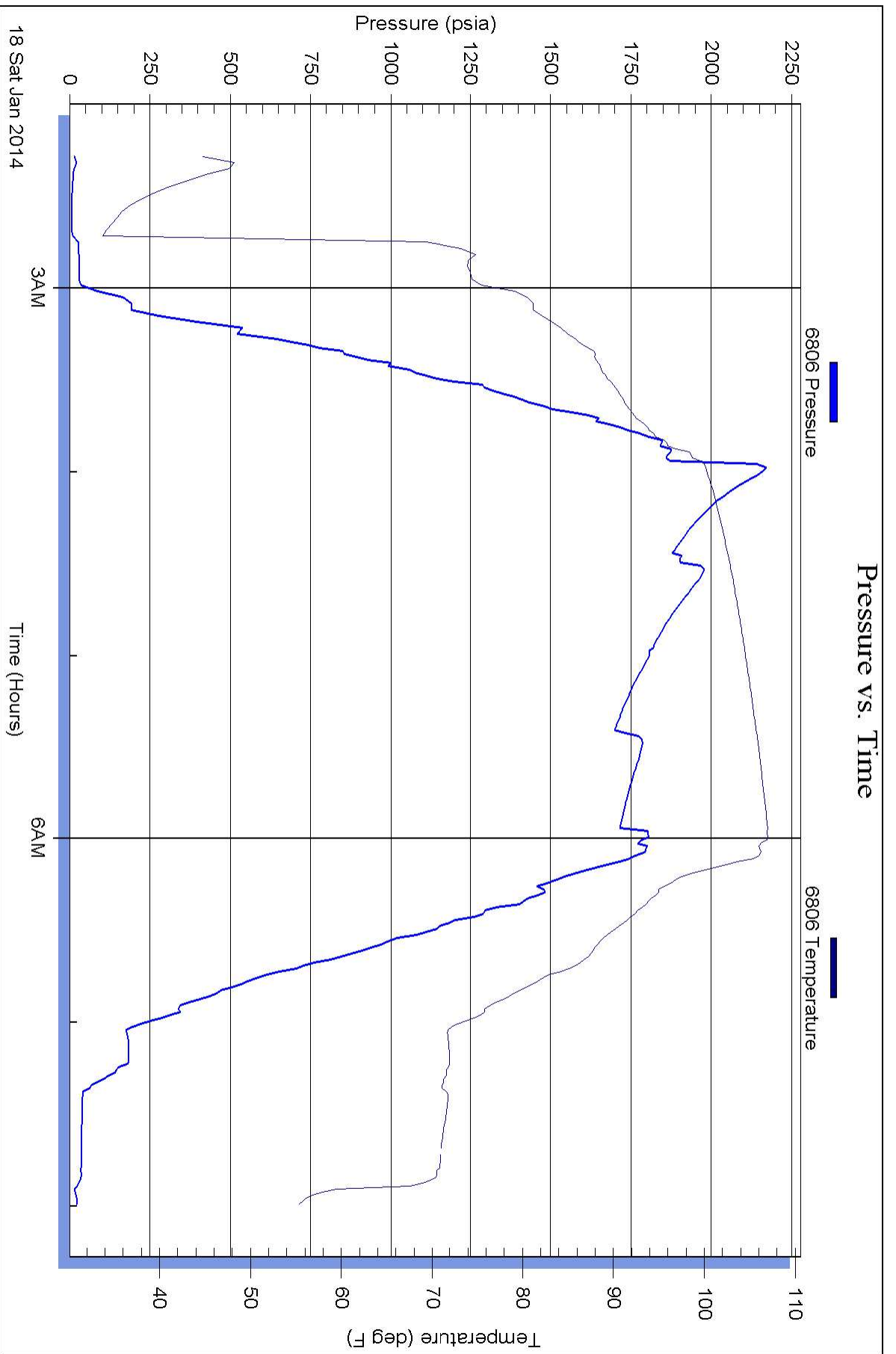
Serial #: 6806

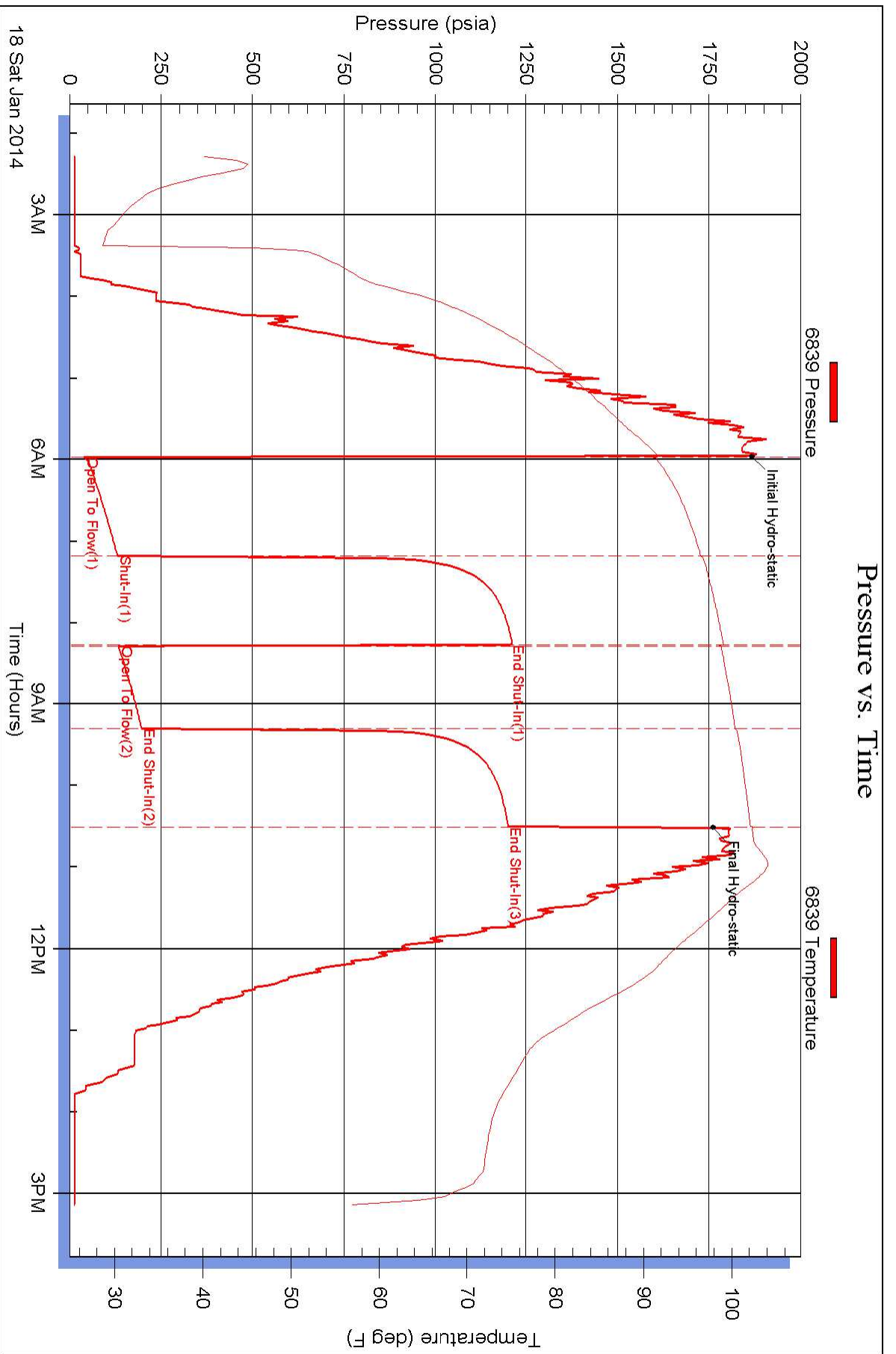
Below

Black Tea Oil

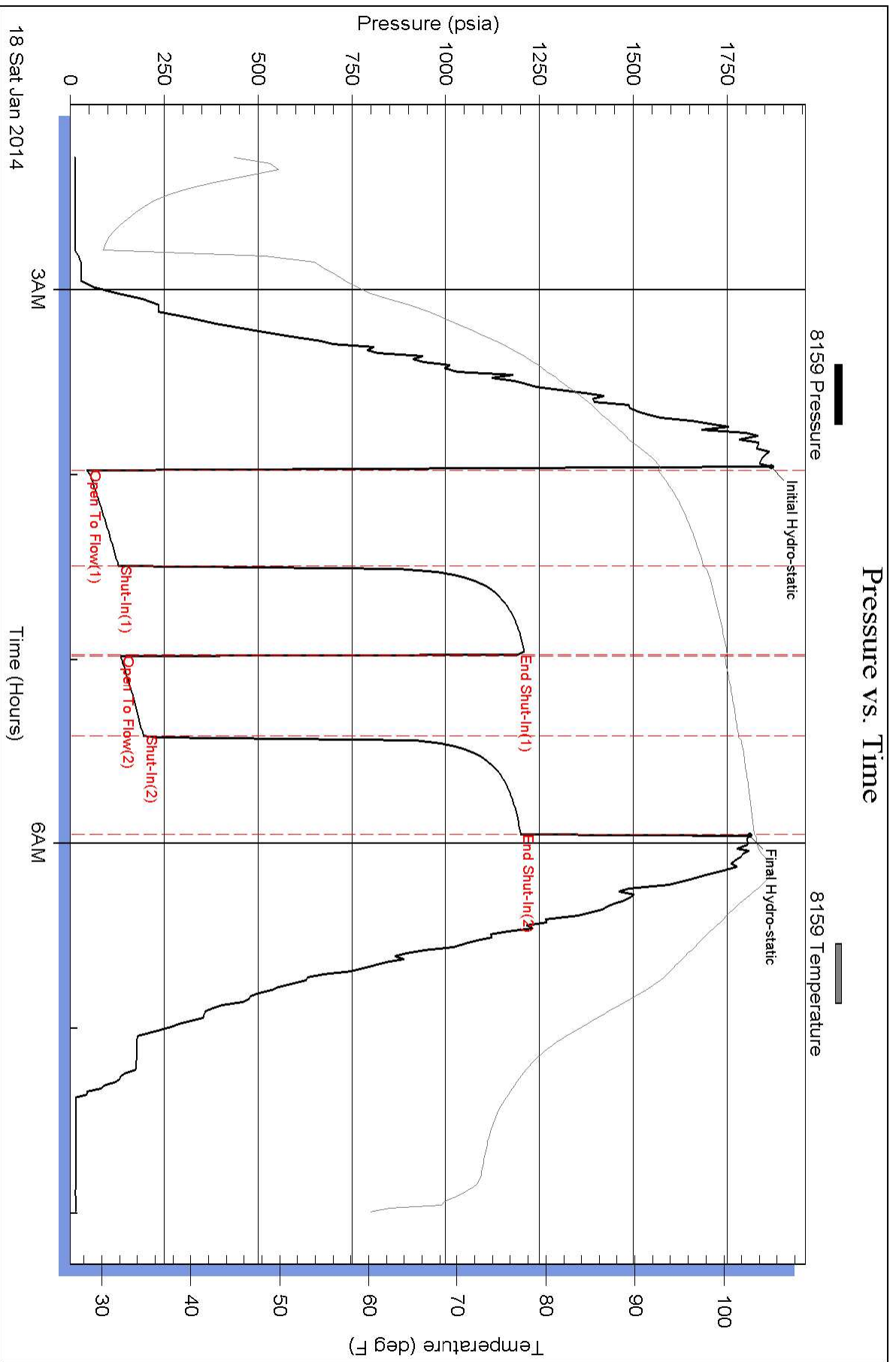
Krebs P

DST Test Number: 2





Pressure vs. Time





DRILL STEM TEST REPORT

FLUID SUMMARY

Black Tea Oil

29-14-32w-Logan

1011 Centennial Blvd. Suit B
Hays Kansas 67601

Krebs P

Job Ticket: 19185

DST#: 2

ATTN: Anthony Steinke

Test Start: 2014.01.18 @ 02:16:00

Mud and Cushion Information

Mud Type: Gel Chem

Cushion Type:

Oil API:

deg API

Mud Weight: 9.00 lb/gal

Cushion Length:

ft

Water Salinity:

ppm

Viscosity: 50.00 sec/qt

Cushion Volume:

bbbl

Water Loss: 6.40 in³

Gas Cushion Type:

Resistivity: ohm.m

Gas Cushion Pressure:

psia

Salinity: 3000.00 ppm

Filter Cake: 1.00 inches

Recovery Information

Recovery Table

| Length ft | Description | Volume bbbl |
|--------------|--------------------------|----------------|
| 60.00 | Oil cut muddy w ater | 0.563 |
| 0.00 | Oil 3% Mud 65% Water32% | 0.000 |
| 245.00 | Oil spotted muddy w ater | 3.437 |
| 0.00 | Oil 1% Mud 15%Water 84% | 0.000 |

Total Length: 305.00 ft

Total Volume: 4.000 bbl

Num Fluid Samples: 0

Num Gas Bombs: 0

Serial #:

Laboratory Name:

Laboratory Location:

Recovery Comments:



DRILL STEM TEST REPORT

TOOL DIAGRAM

Black Tea Oil

29-14-32w-Logan

1011 Centennial Blvd. Suit B
Hays Kansas 67601

Krebs P

Job Ticket: 19185

DST#: 2

ATTN: Anthony Steinke

Test Start: 2014.01.18 @ 02:16:00

Tool Information

| | | | | |
|---------------------------|--------------------|-----------------------|-------------------------|------------------------------------|
| Drill Pipe: | Length: 3772.00 ft | Diameter: 3.80 inches | Volume: 52.91 bbl | Tool Weight: 2000.00 lb |
| Heavy Wt. Pipe: | Length: 0.00 ft | Diameter: 0.00 inches | Volume: 0.00 bbl | Weight set on Packer: 20000.00 lb |
| Drill Collar: | Length: 30.55 ft | Diameter: 2.25 inches | Volume: 0.15 bbl | Weight to Pull Loose: 68000.00 lb |
| | | | Total Volume: 53.06 bbl | Tool Chased 1.00 ft |
| Drill Pipe Above KB: | 27.16 ft | | | String Weight: Initial 55000.00 lb |
| Depth to Top Packer: | 3798.00 ft | | | Final 56000.00 lb |
| Depth to Bottom Packer: | 3817.37 ft | | | |
| Interval between Packers: | 19.37 ft | | | |
| Tool Length: | 46.28 ft | | | |
| Number of Packers: | 2 | Diameter: 6.75 inches | | |

Tool Comments:

| Tool Description | Length (ft) | Serial No. | Position | Depth (ft) | Accum. Lengths |
|------------------|-------------|------------|----------|------------|----------------------------|
| P.O. Sub | 0.31 | | | 3775.70 | |
| C.O. Sub | 0.31 | | | 3776.01 | |
| P.O. Sub | 0.31 | | | 3776.32 | |
| Recorder | 1.80 | | Fluid | 3778.12 | |
| Conv. S.I. Tool | 1.52 | | | 3779.64 | |
| Sampler | 1.10 | | | 3780.74 | |
| Stubb | 2.10 | | | 3782.84 | |
| Recorder | 1.80 | | Inside | 3784.64 | |
| Telemetry Tool | 7.01 | | | 3791.65 | |
| Jars | 2.05 | | | 3793.70 | |
| Bypass Hanger | 0.32 | | | 3794.02 | |
| Safety Joint | 0.78 | | | 3794.80 | |
| Packer | 1.78 | | | 3796.58 | 22.61 Bottom Of Top Packer |
| Packer | 1.42 | | | 3798.00 | |
| Stubb | 0.36 | | | 3798.36 | |
| Recorder Carrier | 1.80 | | | 3800.16 | |
| Recorder | 0.00 | 6839 | Outside | 3800.16 | |
| Recorder | 0.00 | 8159 | Outside | 3800.16 | |
| Perforations | 16.00 | | | 3816.16 | |
| Bypass Receiver | 0.85 | | | 3817.01 | |
| Blank Spacing | 0.00 | | | 3817.01 | |
| Stubb | 0.36 | | | 3817.37 | 19.37 Tool Interval |
| Packer | 1.42 | | | 3818.79 | |
| Bypass Hanger | 0.30 | | | 3819.09 | |
| Recorder | 1.80 | 6806 | Below | 3820.89 | |
| Collar | 0.00 | | | 3820.89 | |



DRILL STEM TEST REPORT

Black Tea Oil

29-14-32w-Logan

1011 Centennial Blvd. Suit B
Hays Kansas 67601

Krebs P

Job Ticket: 19185

DST#: 2

ATTN: Anthony Steinke

Test Start: 2014.01.18 @ 02:16:00

GENERAL INFORMATION:

Formation: **Lansing KC H**

Deviated: No Whipstock: ft (KB)

Time Tool Opened: 03:58:30

Time Test Ended: 07:59:30

Test Type: Conventional Straddle (Initial)

Tester: Dustin Ellis

Unit No: 3315-Scott City-62

Interval: 3798.00 ft (KB) To 3817.00 ft (KB) (TVD)

Reference Elevations: 2661.00 ft (KB)

Total Depth: 3830.00 ft (KB) (TVD)

2654.00 ft (CF)

Hole Diameter: 7.88 inches Hole Condition: Fair

KB to GR/CF: 7.00 ft

Serial #: 8159 Outside

Press @ RunDepth: 194.78 psia @ 3800.16 ft (KB)

Capacity: 5000.00 psia

Start Date: 2014.01.18

End Date: 2014.01.18

Last Calib.: 2014.01.16

Start Time: 02:16:00

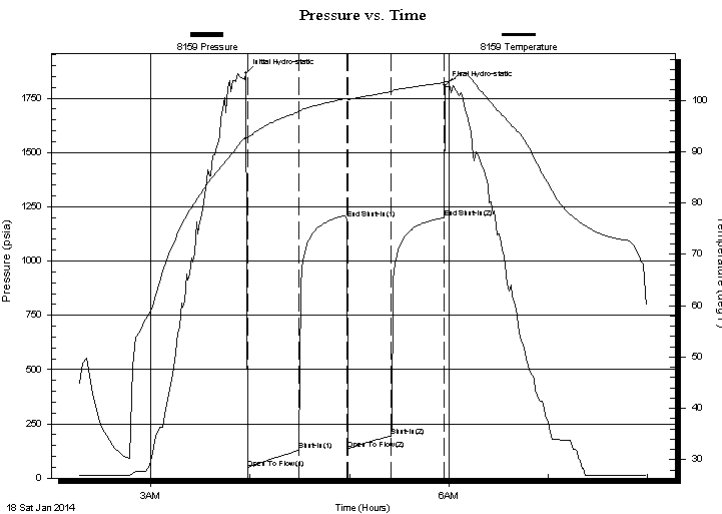
End Time: 07:59:30

Time On Btm: 2014.01.18 @ 03:57:30

Time Off Btm: 2014.01.18 @ 05:57:30

TEST COMMENT: 1st Open 30 minutes Strong building blow blew off bottom bucket in 14 minutes.
1st Shut in 30 minutes No blow back
2nd Open 30 minutes Strong building blow blew off bottom bucket 17 minutes.
2nd Shut in 30 minutes No blow back

PRESSURE SUMMARY



| Time (Min.) | Pressure (psia) | Temp (deg F) | Annotation |
|-------------|-----------------|--------------|----------------------|
| 0 | 1865.60 | 92.84 | Initial Hydro-static |
| 1 | 44.68 | 92.60 | Open To Flow (1) |
| 32 | 128.31 | 97.72 | Shut-In(1) |
| 61 | 1193.92 | 100.39 | End Shut-In(1) |
| 62 | 134.05 | 100.12 | Open To Flow (2) |
| 88 | 194.78 | 101.64 | Shut-In(2) |
| 120 | 1199.40 | 103.44 | End Shut-In(2) |
| 120 | 1809.19 | 103.61 | Final Hydro-static |

Recovery

| Length (ft) | Description | Volume (bbl) |
|-------------|--------------------------|--------------|
| 60.00 | Oil cut muddy w ater | 0.56 |
| 0.00 | Oil 3% Mud 65% Water 32% | 0.00 |
| 245.00 | Oil spotted muddy w ater | 3.44 |
| 0.00 | Oil 1% Mud 15% Water 84% | 0.00 |
| | | |
| | | |

Gas Rates

| | Choke (inches) | Pressure (psia) | Gas Rate (Mcf/d) |
|--|----------------|-----------------|------------------|
| | | | |



DRILL STEM TEST REPORT

Prepared For: **Black Tea Oil**

1011 Centennial Blvd. Suit B
Hays Kansas 67601

ATTN: Anthony Steinke

Krebs P

29-14-32w-Logan

Start Date: 2014.01.18 @ 02:16:00

End Date: 2014.01.18 @ 07:59:30

Job Ticket #: 19185 DST #: 2

Superior Testers Enterprises LLC
PO Box 138 Great Bend KS 67530
1-800-792-6902

Printed: 2014.01.16 @ 08:18:56

Black Tea Oil
29-14-32w-Logan
Krebs P
DST # 2
Lansing KCH
2014.01.18