



DRILL STEM TEST REPORT

Prepared For: **Black Tea Oil, LLC**

1011 Centennial Blvd
Hays Ks, 67601

ATTN: Chris Leiker

Krebs Q #1

30/14s/31w/Gove

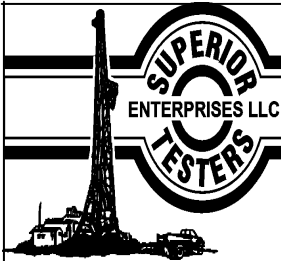
Start Date: 2014.02.10 @ 16:20:00

End Date: 2014.02.11 @ 06:57:00

Job Ticket #: 19201 DST #: 1

Superior Testers Enterprises LLC
PO Box 138 Great Bend KS 67530
1-800-792-6902

Printed: 2014.02.11 @ 07:45:12



DRILL STEM TEST REPORT

Black Tea Oil, LLC

30/14s/31w/Gove

1011 Centennial Blvd
Hays Ks. 67601

Krebs Q #1

Job Ticket: 19201

DST#: 1

ATTN: Chris Leiker

Test Start: 2014.02.10 @ 16:20:00

GENERAL INFORMATION:

Formation: **Johnson- Mississippi**

Deviated: No Whipstock: ft (KB)

Time Tool Opened: 21:38:00

Time Test Ended: 06:57:00

Test Type: Conventional Straddle (Initial)

Tester: Shane Konzem

Unit No: 3330/50/Scott City

Interval: **4300.00 ft (KB) To 4370.00 ft (KB) (TVD)**

Reference Elevations: 2710.00 ft (KB)

Total Depth: 4460.00 ft (KB) (TVD)

2705.00 ft (CF)

Hole Diameter: 7.88 inches Hole Condition: Poor

KB to GR/CF: 5.00 ft

Serial #: 6806 Inside

Press@RunDepth: 185.85 psig @ 4293.25 ft (KB)

Capacity: 5000.00 psig

Start Date: 2014.02.10

End Date: 2014.02.11

Last Calib.: 2014.02.11

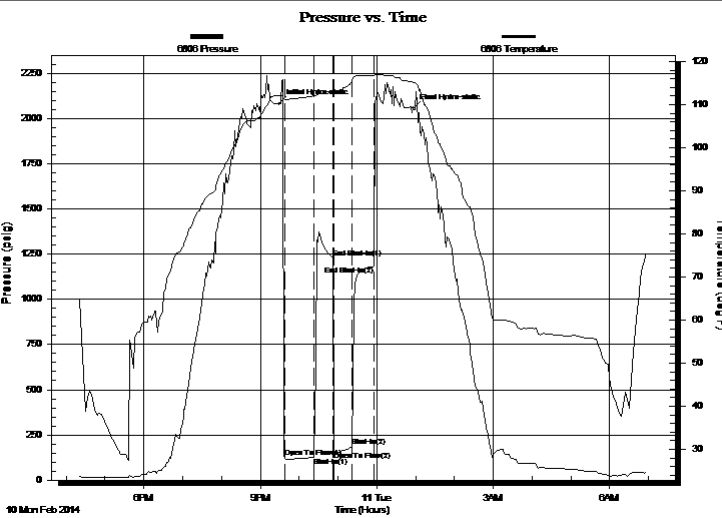
Start Time: 16:20:00

End Time: 06:57:00

Time On Btm: 2014.02.10 @ 21:29:30

Time Off Btm: 2014.02.11 @ 00:56:30

TEST COMMENT: 1st Open/ 45 Minutes. Fair blow built to 9 inches into a 5 gallon bucket of deisel.
1st Shut In/ 30 Minutes. No blow back.
2nd Open/ 30 Minutes. Good blow built to bottom of 5 gallon bucket in 22 minutes and 30 seconds.
2nd Shut In/ 30 Minutes. No blow back.



PRESSURE SUMMARY

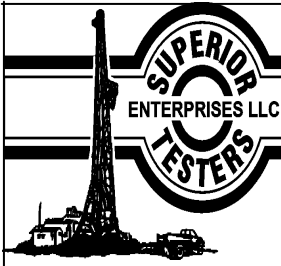
Time (Min.)	Pressure (psig)	Temp (deg F)	Annotation
0	2079.60	112.07	Initial Hydro-static
9	125.40	111.24	Open To Flow (1)
53	128.52	111.97	Shut-In(1)
83	1231.42	112.75	End Shut-In(1)
84	160.62	112.50	Open To Flow (2)
112	185.85	115.36	Shut-In(2)
146	1182.21	116.78	End Shut-In(2)
207	2055.83	115.14	Final Hydro-static

Recovery

Length (ft)	Description	Volume (bbl)
10.00	100% Clean Oil	0.05
252.00	20% Oil, 80% Mud.	2.84
0.00	441 feet 100% gas	0.00
0.00	Oil Gravity w as 42 corrected.	0.00

Gas Rates

	Choke (inches)	Pressure (psig)	Gas Rate (Mcf/d)



DRILL STEM TEST REPORT

Black Tea Oil, LLC

30/14s/31w/Gove

1011 Centennial Blvd
Hays Ks. 67601

Krebs Q #1

Job Ticket: 19201

DST#: 1

ATTN: Chris Leiker

Test Start: 2014.02.10 @ 16:20:00

GENERAL INFORMATION:

Formation: **Johnson- Mississippi**

Deviated: No Whipstock: ft (KB)

Time Tool Opened: 21:38:00

Time Test Ended: 06:57:00

Test Type: Conventional Straddle (Initial)

Tester: Shane Konzem

Unit No: 3330/50/Scott City

Interval: **4300.00 ft (KB) To 4370.00 ft (KB) (TVD)**

Reference Elevations: 2710.00 ft (KB)

Total Depth: 4460.00 ft (KB) (TVD)

2705.00 ft (CF)

Hole Diameter: 7.88 inches Hole Condition: Poor

KB to GR/CF: 5.00 ft

Serial #: 8159 Outside

Press@RunDepth: 1182.55 psig @ 4294.25 ft (KB)

Capacity: 5000.00 psig

Start Date: 2014.02.10

End Date: 2014.02.11

Last Calib.: 2014.02.11

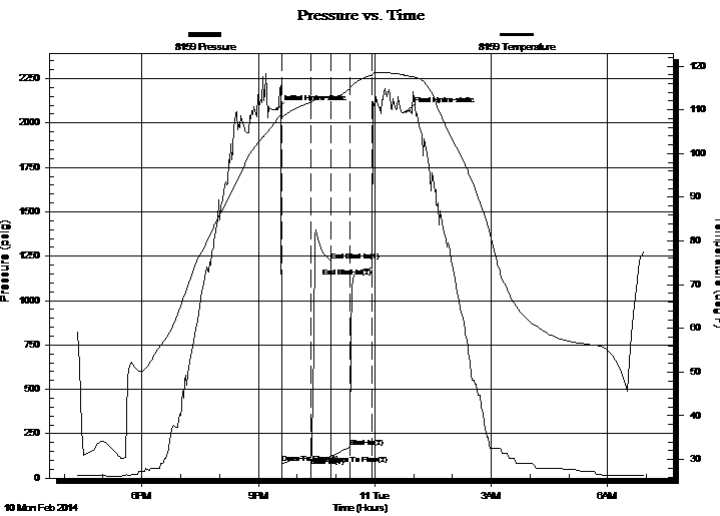
Start Time: 16:20:00

End Time: 06:57:00

Time On Btm: 2014.02.10 @ 21:29:30

Time Off Btm: 2014.02.11 @ 00:49:00

TEST COMMENT: 1st Open/ 45 Minutes. Fair blow built to 9 inches into a 5 gallon bucket of deisel.
1st Shut In/ 30 Minutes. No blow back.
2nd Open/ 30 Minutes. Good blow built to bottom of 5 gallon bucket in 22 minutes and 30 seconds.
2nd Shut In/ 30 Minutes. No blow back.



PRESSURE SUMMARY

Time (Min.)	Pressure (psig)	Temp (deg F)	Annotation
0	2075.84	107.90	Initial Hydro-static
7	81.62	108.40	Open To Flow (1)
52	118.99	111.71	Shut-In(1)
83	1224.68	113.18	End Shut-In(1)
84	126.48	112.86	Open To Flow (2)
112	173.36	114.83	Shut-In(2)
146	1182.55	117.94	End Shut-In(2)
200	2063.10	117.84	Final Hydro-static

Recovery

Length (ft)	Description	Volume (bbl)
10.00	100% Clean Oil	0.05
252.00	20% Oil, 80% Mud.	2.84
0.00	441 feet 100% gas	0.00
0.00	Oil Gravity w as 42 corrected.	0.00

Gas Rates

	Choke (inches)	Pressure (psig)	Gas Rate (Mcf/d)



DRILL STEM TEST REPORT

Black Tea Oil, LLC

30/14s/31w/Gove

1011 Centennial Blvd
Hays Ks. 67601

Krebs Q #1

Job Ticket: 19201

DST#: 1

ATTN: Chris Leiker

Test Start: 2014.02.10 @ 16:20:00

GENERAL INFORMATION:

Formation: **Johnson- Mississippi**

Deviated: No Whipstock: ft (KB)

Time Tool Opened: 21:38:00

Time Test Ended: 06:57:00

Test Type: Conventional Straddle (Initial)

Tester: Shane Konzem

Unit No: 3330/50/Scott City

Interval: **4300.00 ft (KB) To 4370.00 ft (KB) (TVD)**

Reference Elevations: 2710.00 ft (KB)

Total Depth: 4460.00 ft (KB) (TVD)

2705.00 ft (CF)

Hole Diameter: 7.88 inches Hole Condition: Poor

KB to GR/CF: 5.00 ft

Serial #: 8524 Below (Straddle)

Press@RunDepth: psig @ 4384.82 ft (KB)

Capacity: psig

Start Date: 2014.02.10

End Date: 2014.02.11

Last Calib.: 1899.12.30

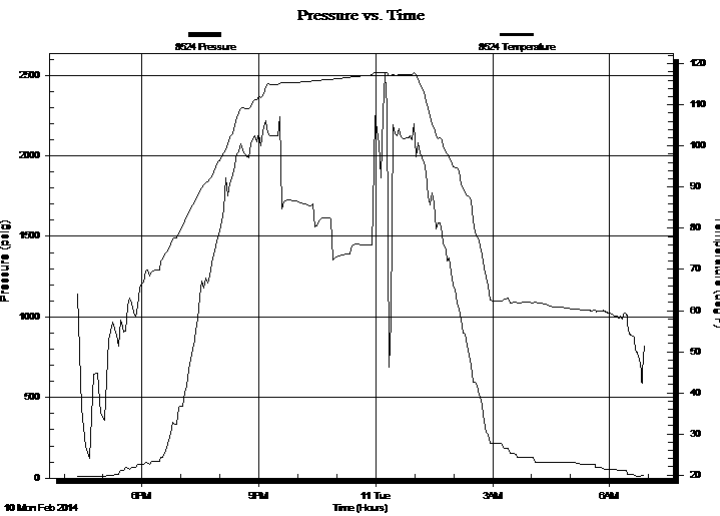
Start Time: 16:20:00

End Time: 06:54:05

Time On Btm:

Time Off Btm:

TEST COMMENT: 1st Open/ 45 Minutes. Fair blow built to 9 inches into a 5 gallon bucket of deisel.
1st Shut In/ 30 Minutes. No blow back.
2nd Open/ 30 Minutes. Good blow built to bottom of 5 gallon bucket in 22 minutes and 30 seconds.
2nd Shut In/ 30 Minutes. No blow back.



PRESSURE SUMMARY

Time (Min.)	Pressure (psig)	Temp (deg F)	Annotation

Recovery

Length (ft)	Description	Volume (bbl)
10.00	100% Clean Oil	0.05
252.00	20% Oil, 80% Mud.	2.84
0.00	441 feet 100% gas	0.00
0.00	Oil Gravity w as 42 corrected.	0.00

Gas Rates

Choke (inches)	Pressure (psig)	Gas Rate (Mcf/d)



DRILL STEM TEST REPORT

TOOL DIAGRAM

Black Tea Oil, LLC

30/14s/31w/Gove

1011 Centennial Blvd
Hays Ks. 67601

Krebs Q #1

Job Ticket: 19201

DST#: 1

ATTN: Chris Leiker

Test Start: 2014.02.10 @ 16:20:00

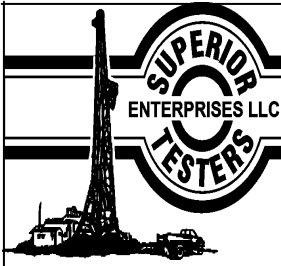
Tool Information

Drill Pipe:	Length: 4164.00 ft	Diameter: 3.80 inches	Volume: 58.41 bbl	Tool Weight: 2000.00 lb
Heavy Wt. Pipe:	Length: 0.00 ft	Diameter: 0.00 inches	Volume: 0.00 bbl	Weight set on Packer: 25000.00 lb
Drill Collar:	Length: 85.74 ft	Diameter: 2.25 inches	Volume: 0.42 bbl	Weight to Pull Loose: 180000.0 lb
			Total Volume: 58.83 bbl	Tool Chased 0.00 ft
Drill Pipe Above KB:	29.99 ft			String Weight: Initial 62000.00 lb
Depth to Top Packer:	4300.00 ft			Final 64000.00 lb
Depth to Bottom Packer:	4387.82 ft			
Interval between Packers:	87.82 ft			
Tool Length:	168.07 ft			
Number of Packers:	4	Diameter:	6.75 inches	

Tool Comments: Tour up one packer.

Tool Description	Length (ft)	Serial No.	Position	Depth (ft)	Accum. Lengths
Shut-In Tool	5.00			4224.75	
Hydraulic tool	5.00			4229.75	
Top Packer	5.00			4234.75	
Packer - Shale	5.00			4239.75	
Anchor	5.00			4244.75	
Change Over Sub	0.75			4245.50	
Drill Pipe	31.00			4276.50	
Change Over Sub	0.75			4277.25	
Perforations	15.00			4292.25	
Recorder	1.00	6806	Inside	4293.25	
Recorder	1.00	8159	Outside	4294.25	
Blank Off Sub	0.75			4295.00	
Packer	5.00			4300.00	80.25 Bottom Of Top Packer
Change Over Sub	0.75			4300.75	
Drill Pipe	62.32			4363.07	
Change Over Sub	0.75			4363.82	
Perforations	20.00			4383.82	
Recorder	1.00	8524	Below	4384.82	
Bull Plug	3.00			4387.82	87.82 Anchor Tool

Total Tool Length: 168.07



DRILL STEM TEST REPORT

FLUID SUMMARY

Black Tea Oil, LLC

30/14s/31w/Gove

1011 Centennial Blvd
Hays Ks. 67601

Krebs Q #1

Job Ticket: 19201

DST#: 1

ATTN: Chris Leiker

Test Start: 2014.02.10 @ 16:20:00

Mud and Cushion Information

Mud Type: Gel Chem

Cushion Type:

Oil API:

deg API

Mud Weight: 10.00 lb/gal

Cushion Length:

ft

Water Salinity:

ppm

Viscosity: 40.00 sec/qt

Cushion Volume:

bbbl

Water Loss: 16.00 in³

Gas Cushion Type:

Resistivity: ohm.m

Gas Cushion Pressure:

psig

Salinity: 2000.00 ppm

Filter Cake: inches

Recovery Information

Recovery Table

Length ft	Description	Volume bbbl
10.00	100% Clean Oil	0.049
252.00	20% Oil, 80% Mud.	2.845
0.00	441 feet 100% gas	0.000
0.00	Oil Gravity was 42 corrected.	0.000

Total Length: 262.00 ft

Total Volume: 2.894 bbl

Num Fluid Samples: 0

Num Gas Bombs: 0

Serial #:

Laboratory Name:

Laboratory Location:

Recovery Comments:

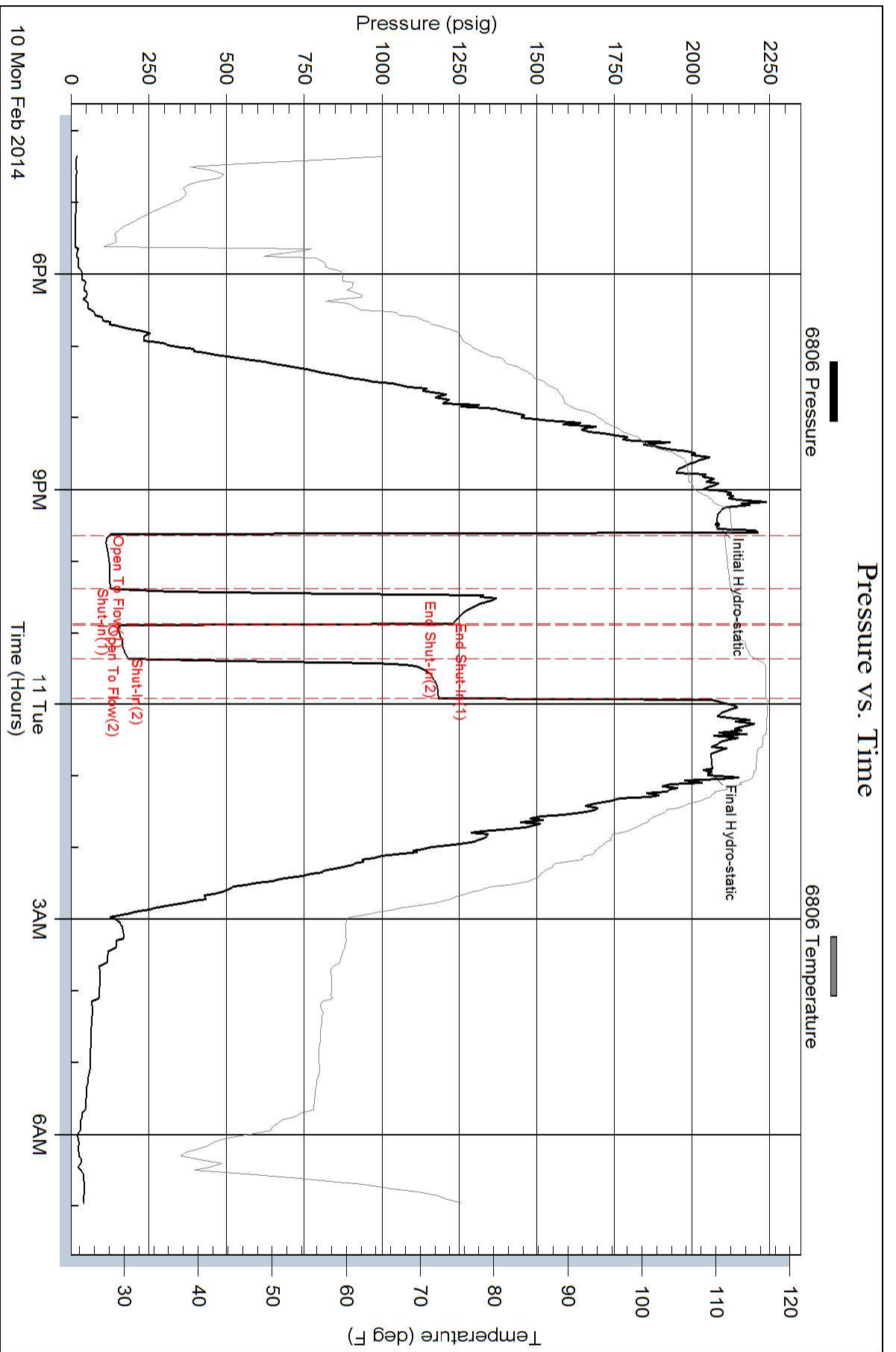
Serial #: 6806

Inside

Black Tea Oil, LLC

Krebs Q#1

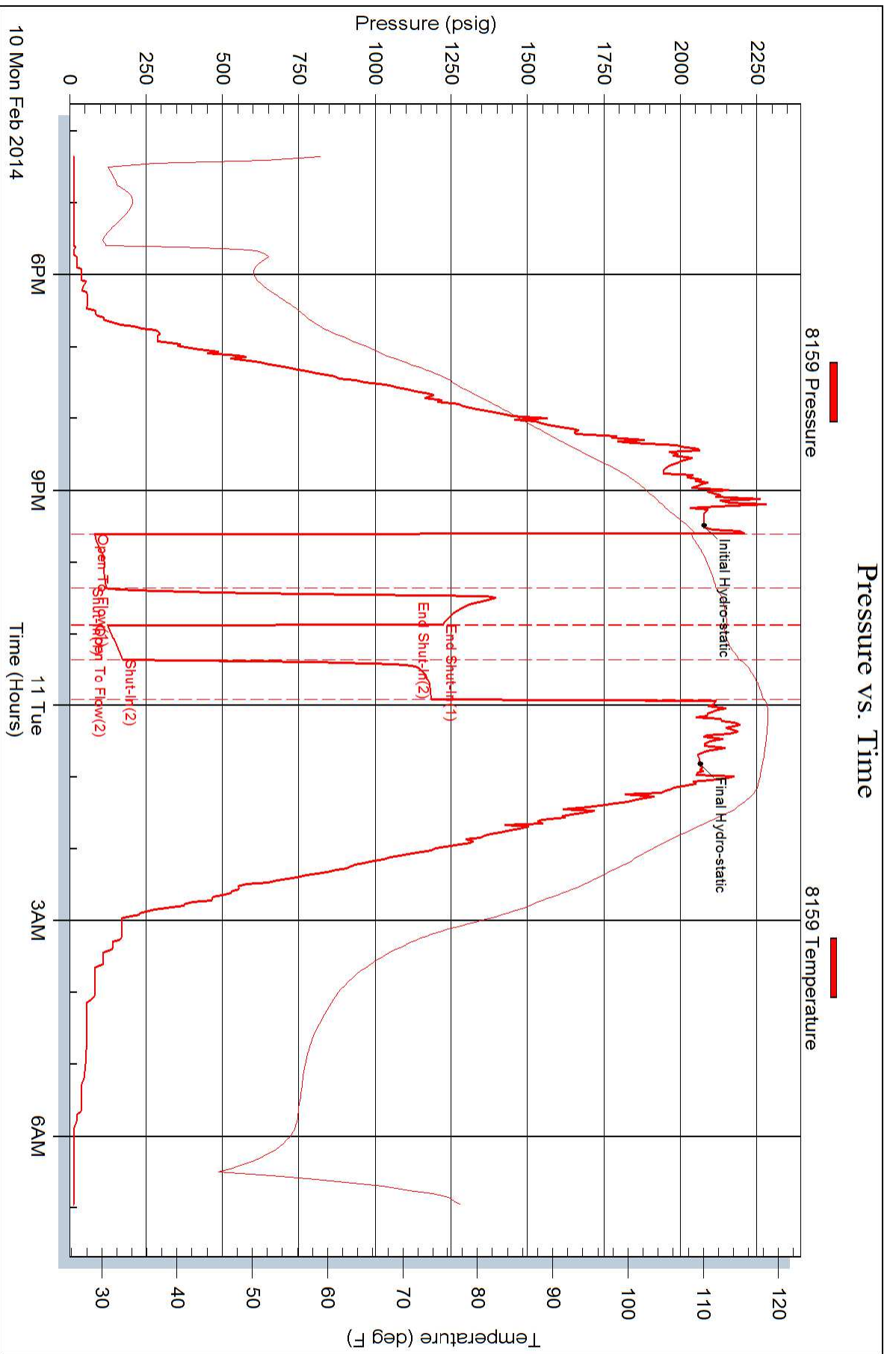
DST Test Number: 1



Superior Testers Enterprises LLC

Ref. No: 19201

Printed: 2014.02.11 @ 07:45:12



Serial #: 8524

Below (Stratfield) Tea Oil, LLC

Krebs Q#1

DST Test Number: 1

