



DRILL STEM TEST REPORT

Prepared For: **Castelli Exploration, Inc.**

6908 Nw 12th
Oklahoma City, OK .73162

ATTN: Cameron Castelli

Huck Jobe #2

33-33s-17w Commanche,KS

Start Date: 2014.03.06 @ 19:41:57

End Date: 2014.03.07 @ 10:02:42

Job Ticket #: 51938 DST #: 1

Trilobite Testing, Inc

PO Box 362 Hays, KS 67601

ph: 785-625-4778 fax: 785-625-5620

Printed: 2014.03.11 @ 11:27:39



**TRILOBITE
TESTING, INC**

DRILL STEM TEST REPORT

Castelli Exploration, Inc.
6908 Nw 12th
Oklahoma City, OK .73162
ATTN: Cameron Castelli

33-33s-17w Commanche,KS
Huck Jobe #2
Job Ticket: 51938 **DST#: 1**
Test Start: 2014.03.06 @ 19:41:57

GENERAL INFORMATION:

Formation: **Simpson Dolomite**
Deviated: No Whipstock: ft (KB) Test Type: Conventional Bottom Hole (Initial)
Time Tool Opened: 23:16:42 Tester: Matt Smith
Time Test Ended: 10:02:42 Unit No: 53
Interval: 5785.00 ft (KB) To 5800.00 ft (KB) (TVD) Reference Elevations: 1821.00 ft (KB)
Total Depth: 5800.00 ft (KB) (TVD) 1808.00 ft (CF)
Hole Diameter: 7.88 inches Hole Condition: Fair KB to GR/CF: 13.00 ft

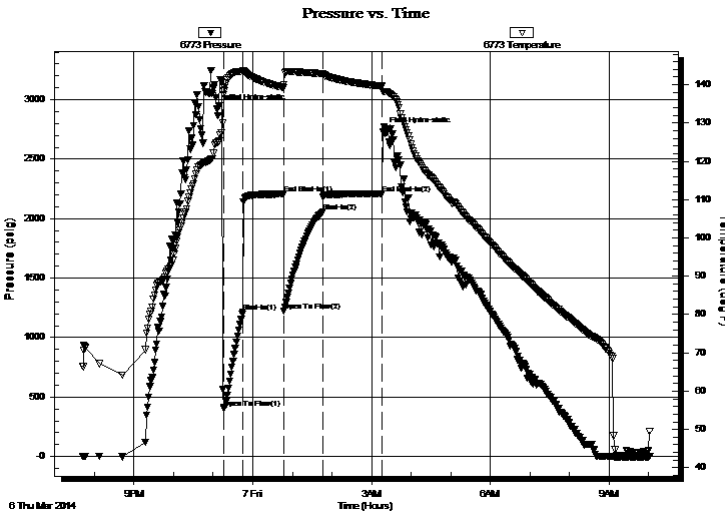
Serial #: 6773

Outside

Press@RunDepth: 2058.96 psig @ 5786.00 ft (KB) Capacity: 8000.00 psig
Start Date: 2014.03.06 End Date: 2014.03.07 Last Calib.: 2014.03.07
Start Time: 19:42:02 End Time: 10:02:42 Time On Btm: 2014.03.06 @ 23:05:27
Time Off Btm: 2014.03.07 @ 03:17:27

TEST COMMENT: IF: Strong blow . B.O.B. in 27 secs.
IS: Fair blow . B.O.B. in 45 mins.
FF: Strong blow . B.O.B. in 30 secs. G.T.S.
FS: Weak blow . Surf., to 10 ".

PRESSURE SUMMARY



Time (Min.)	Pressure (psig)	Temp (deg F)	Annotation
0	2926.44	124.86	Initial Hydro-static
12	405.44	138.41	Open To Flow (1)
39	1212.06	143.52	Shut-In(1)
102	2206.55	139.24	End Shut-In(1)
102	1224.75	140.09	Open To Flow (2)
161	2058.96	142.89	Shut-In(2)
251	2207.37	139.61	End Shut-In(2)
252	2727.96	138.27	Final Hydro-static

Recovery

Length (ft)	Description	Volume (bbl)
780.00	GOCWM 3%w 17%w 35%o 45%g	9.30
3568.00	WCM 2%w 98%w	50.05
0.00	GTS	0.00

Gas Rates

	Choke (inches)	Pressure (psig)	Gas Rate (Mcf/d)
First Gas Rate	0.25	6.00	32.36
Last Gas Rate	0.25	3.00	27.60
Max. Gas Rate	0.25	8.00	35.54



TRILOBITE TESTING, INC

DRILL STEM TEST REPORT

Castelli Exploration, Inc.
 6908 Nw 12th
 Oklahoma City, OK .73162
 ATTN: Cameron Castelli

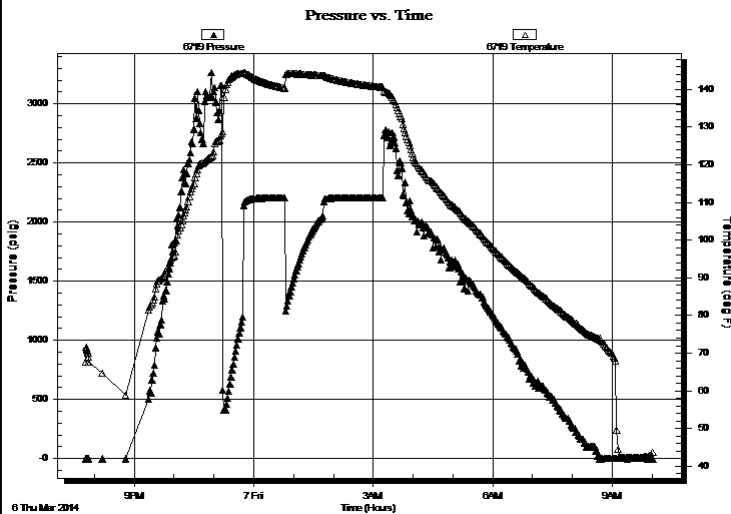
33-33s-17w Commanche,KS
Huck Jobe #2
 Job Ticket: 51938 **DST#: 1**
 Test Start: 2014.03.06 @ 19:41:57

GENERAL INFORMATION:

Formation: **Simpson Dolomite**
 Deviated: No Whipstock: ft (KB)
 Time Tool Opened: 23:16:42
 Time Test Ended: 10:02:42
 Interval: **5785.00 ft (KB) To 5800.00 ft (KB) (TVD)**
 Total Depth: 5800.00 ft (KB) (TVD)
 Hole Diameter: 7.88 inches Hole Condition: Fair
 Test Type: Conventional Bottom Hole (Initial)
 Tester: Matt Smith
 Unit No: 53
 Reference Elevations: 1821.00 ft (KB)
 1808.00 ft (CF)
 KB to GR/CF: 13.00 ft

Serial #: 6719 Outside
 Press@RunDepth: psig @ 5786.00 ft (KB) Capacity: 8000.00 psig
 Start Date: 2014.03.06 End Date: 2014.03.07 Last Calib.: 2014.03.07
 Start Time: 19:46:36 End Time: 10:02:16 Time On Btm:
 Time Off Btm:

TEST COMMENT: IF: Strong blow . B.O.B. in 27 secs.
 IS: Fair blow . B.O.B. in 45 mins.
 FF: Strong blow . B.O.B. in 30 secs. G.T.S.
 FS: Weak blow . Surf., to 10 ".



PRESSURE SUMMARY

Time (Min.)	Pressure (psig)	Temp (deg F)	Annotation

Recovery

Length (ft)	Description	Volume (bbl)
780.00	GOCWM 3%w 17%w 35%o 45%g	9.30
3568.00	WCM 2%w 98%w	50.05
0.00	GTS	0.00

Gas Rates

	Choke (inches)	Pressure (psig)	Gas Rate (Mcf/d)
First Gas Rate	0.25	6.00	32.36
Last Gas Rate	0.25	3.00	27.60
Max. Gas Rate	0.25	8.00	35.54



**TRILOBITE
TESTING, INC**

DRILL STEM TEST REPORT

TOOL DIAGRAM

Castelli Exploration, Inc.
6908 Nw 12th
Oklahoma City, OK .73162
ATTN: Cameron Castelli

33-33s-17w Commanche,KS
Huck Jobe #2
Job Ticket: 51938 **DST#: 1**
Test Start: 2014.03.06 @ 19:41:57

Tool Information

Drill Pipe:	Length: 5592.00 ft	Diameter: 3.80 inches	Volume: 78.44 bbl	Tool Weight:	2400.00 lb
Heavy Wt. Pipe:	Length: 0.00 ft	Diameter: 0.00 inches	Volume: 0.00 bbl	Weight set on Packer:	24000.00 lb
Drill Collar:	Length: 180.00 ft	Diameter: 2.25 inches	Volume: 0.89 bbl	Weight to Pull Loose:	110000.0 lb
			<u>Total Volume: 79.33 bbl</u>	Tool Chased	0.00 ft
Drill Pipe Above KB:	15.00 ft			String Weight: Initial	86000.00 lb
Depth to Top Packer:	5785.00 ft			Final	98000.00 lb
Depth to Bottom Packer:	ft				
Interval between Packers:	15.00 ft				
Tool Length:	43.00 ft				
Number of Packers:	2	Diameter: 6.75 inches			

Tool Comments:

Tool Description	Length (ft)	Serial No.	Position	Depth (ft)	Accum. Lengths
-------------------------	--------------------	-------------------	-----------------	-------------------	-----------------------

Change Over Sub	1.00			5758.00	
Shut In Tool	5.00			5763.00	
Hydraulic tool	5.00			5768.00	
Jars	5.00			5773.00	
Safety Joint	3.00			5776.00	
Packer	4.00			5780.00	28.00 Bottom Of Top Packer
Packer	5.00			5785.00	
Stubb	1.00			5786.00	
Recorder	0.00	6719	Outside	5786.00	
Recorder	0.00	6773	Outside	5786.00	
Perforations	11.00			5797.00	
Bullnose	3.00			5800.00	15.00 Bottom Packers & Anchor

Total Tool Length: 43.00



**TRILOBITE
TESTING, INC**

DRILL STEM TEST REPORT

FLUID SUMMARY

Castelli Exploration, Inc.
6908 Nw 12th
Oklahoma City, OK .73162
ATTN: Cameron Castelli

33-33s-17w Commanche,KS
Huck Jobe #2
Job Ticket: 51938 **DST#: 1**
Test Start: 2014.03.06 @ 19:41:57

Mud and Cushion Information

Mud Type: Gel Chem	Cushion Type:	Oil API:	deg API
Mud Weight: 9.00 lb/gal	Cushion Length: ft	Water Salinity:	40000 ppm
Viscosity: 53.00 sec/qt	Cushion Volume: bbl		
Water Loss: 8.97 in ³	Gas Cushion Type:		
Resistivity: 0.00 ohm.m	Gas Cushion Pressure: psig		
Salinity: 5000.00 ppm			
Filter Cake: 0.20 inches			

Recovery Information

Recovery Table

Length ft	Description	Volume bbl
780.00	GOCWM 3%m 17%w 35%o 45%g	9.302
3568.00	WCM 2%m 98%w	50.050
0.00	GTS	0.000

Total Length: 4348.00 ft Total Volume: 59.352 bbl

Num Fluid Samples: 0 Num Gas Bombs: 0 Serial #: none

Laboratory Name: Laboratory Location:

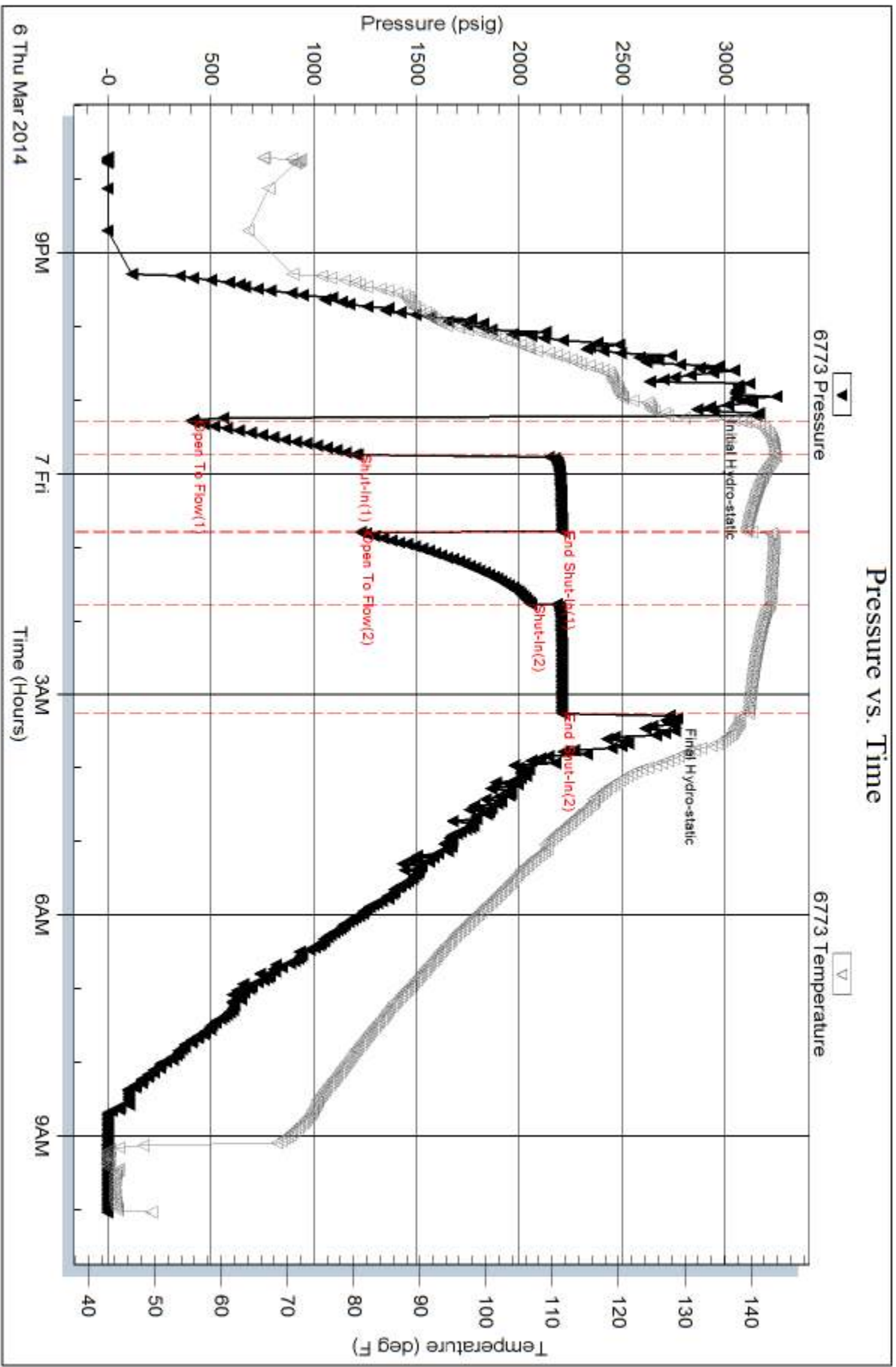
Recovery Comments: See gas report Rw .325 @ 40

Serial #: 6773

Outside Castle Exploration, Inc.

Huck Jobe #2

DST Test Number: 1

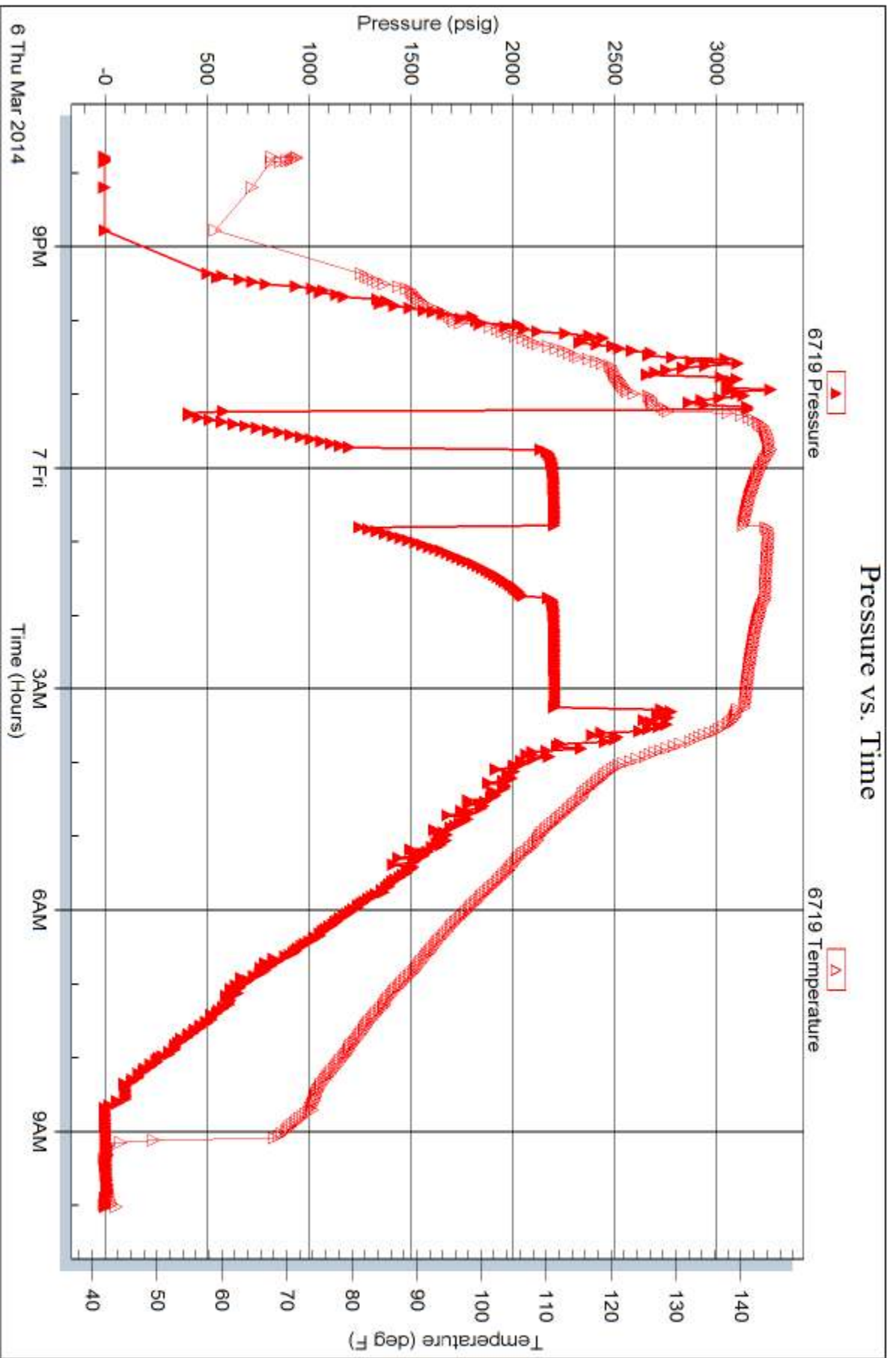


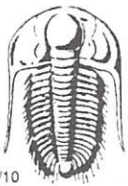
Serial #: 6719

Outside Castell Exploration, Inc.

Huck Jobe #2

DST Test Number: 1





TRILOBITE TESTING INC.

1515 Commerce Parkway • Hays, Kansas 67601

Test Ticket

NO. 51938

Well Name & No. Huck JOBE #2 Test No. 1 Date 03/06/14
 Company Castelli Exploration, Inc. Elevation 1821 KB 1808 GL
 Address 6908 NW 12th Oklahoma City, OK, 73162
 Co. Rep / Geo. Cameron Castelli Rig Duke Rig # 7
 Location: Sec. 33 Twp. 33s Rge. 17w Co. Commanche State KS.

Interval Tested 5785 - 5800 Zone Tested Arbuckle
 Anchor Length 15' Drill Pipe Run 5592 Mud Wt. 9.4
 Top Packer Depth 5780 Drill Collars Run 180' Vis 53
 Bottom Packer Depth 5785 Wt. Pipe Run 2 WL 9.0
 Total Depth 5800 Chlorides 5,000 ppm System LCM 10th

Blow Description IF: Strong blow. B.O.B. in 27 secs.
ISI: Fair blow. B.O.B. in 45 mins.
FF: Strong blow. B.O.B. in 30 secs. G.T.S.
FSI: Weak blow. Surf. to 10".

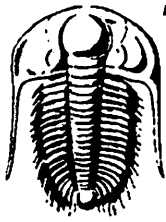
Rec	Feet of	%gas	%oil	%water	%mud
1410	G.I.P				
780	GOCWm	45%	35%	17%	3%
3568	WCM			98%	2%

Rec Total 4348' fluid BHT 140° Gravity N/A API RW .325 @ 40.2 °F Chlorides 40,000 ppm

(A) Initial Hydrostatic <u>2926</u>	<input checked="" type="checkbox"/> Test <u>1350</u>	T-On Location <u>1840</u>
(B) First Initial Flow <u>405</u>	<input checked="" type="checkbox"/> Jars <u>250</u>	T-Started <u>1942</u>
(C) First Final Flow <u>1212</u>	<input checked="" type="checkbox"/> Safety Joint <u>75</u>	T-Open <u>2316</u>
(D) Initial Shut-In <u>2207</u>	<input type="checkbox"/> Circ Sub	T-Pulled <u>0315</u>
(E) Second Initial Flow <u>1225</u>	<input type="checkbox"/> Hourly Standby	T-Out <u>1602</u>
(F) Second Final Flow <u>2059</u>	<input checked="" type="checkbox"/> Mileage <u>(152)</u> <u>235.60</u>	Comments
(G) Final Shut-In <u>2207</u>	<input type="checkbox"/> Sampler	
(H) Final Hydrostatic <u>2728</u>	<input type="checkbox"/> Straddle	<input type="checkbox"/> Ruined Shale Packer
	<input type="checkbox"/> Shale Packer	<input type="checkbox"/> Ruined Packer
Initial Open <u>30</u>	<input type="checkbox"/> Extra Packer	<input type="checkbox"/> Extra Copies
Initial Shut-In <u>60</u>	<input type="checkbox"/> Extra Recorder	Sub Total <u>0</u>
Final Flow <u>60</u>	<input type="checkbox"/> Day Standby	Total <u>1910.60</u>
Final Shut-In <u>90</u>	<input type="checkbox"/> Accessibility	MP/DST Disc't
	Sub Total <u>1910.60</u>	

Approved By _____ Our Representative Matthew Smith

TriLOBITE TESTING Inc. shall not be liable for damaged of any kind of the property or personnel of the one for whom a test is made, or for any loss suffered or sustained, directly or indirectly, through the use of its equipment, or its statements or opinion concerning the results of any test, tools lost or damaged in the hole shall be paid for at cost by the party for whom the test is made.



TRILOBITE TESTING INC.

P.O. Box 362 • Hays, Kansas 67601 • (785) 625-4778

GAS VOLUME REPORT

Castelli Exploration OPERATOR Duke #7
 Huck JOBE #2 WELL NAME AND NO. 3/7/14
 1 DST NO.

Min.	Ins. of Water PSIG	Orifice Size	CF/D	Min.	Ins. of Water PSIG	Orifice Size	M CF/D	ATMS / 1000
				30 sec	6 PSI	1/4"	30.4	32.4
				20	5 PSI	1/4"	28.9	30.8
				30	2 PSI	1/4"	24.5	26.0
				40	3 PSI	1/4"	25.9	27.6
				50	8 PSI	1/4"	33.3	35.5
				60	3 PSI	1/4"	25.9	27.6

Remarks:

Michael J. Jones