



DRILL STEM TEST REPORT

Prepared For: **F G Holl Company**

9431 East Central Ste 100
Wichita Kansas 67206

ATTN: Rene Husted

Rudiger 1-7

7-20s-14w-Barton

Start Date: 2014.03.06 @ 08:37:00

End Date: 2014.03.06 @ 13:15:00

Job Ticket #: 19268 DST #: 3

Superior Testers Enterprises LLC
PO Box 138 Great Bend KS 67530
1-800-792-6902

Printed: 2014.03.06 @ 14:29:37



DRILL STEM TEST REPORT

F G Holl Company
 9431 East Central Ste 100
 Wichita Kansas 67206
 ATTN: Rene Husted

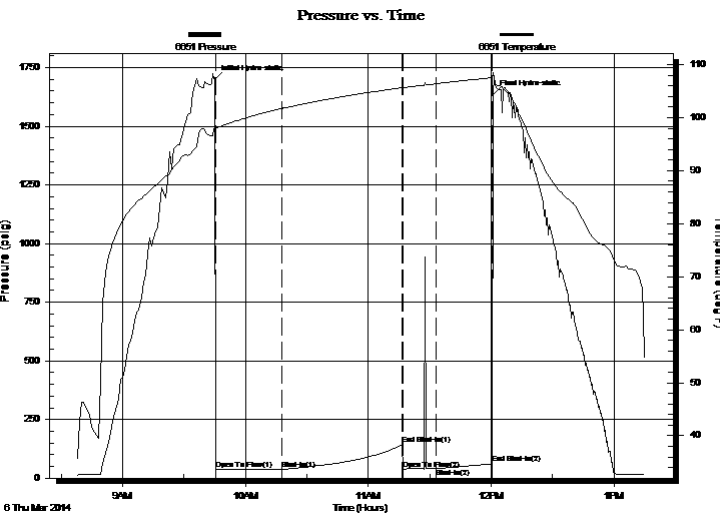
7-20s-14w-Barton
Rudiger 1-7
 Job Ticket: 19268 **DST#: 3**
 Test Start: 2014.03.06 @ 08:37:00

GENERAL INFORMATION:

Formation: **Lansing H**
 Deviated: No Whipstock: ft (KB)
 Time Tool Opened: 09:45:00
 Time Test Ended: 13:15:00
 Test Type: Conventional Bottom Hole (Initial)
 Tester: Dustin Ellis
 Unit No: 3315-Great Bend-22
 Interval: **3412.00 ft (KB) To 3433.00 ft (KB) (TVD)**
 Total Depth: 3433.00 ft (KB) (TVD)
 Reference Elevations: 1919.00 ft (KB)
 1911.00 ft (CF)
 Hole Diameter: 7.88 inches Hole Condition: Fair
 KB to GR/CF: 8.00 ft

Serial #: 6651 Inside
 Press@RunDepth: 61.16 psig @ 3428.00 ft (KB) Capacity: 5000.00 psig
 Start Date: 2014.03.06 End Date: 2014.03.06 Last Calib.: 2014.03.06
 Start Time: 08:37:00 End Time: 13:15:00 Time On Btm: 2014.03.06 @ 09:45:00
 Time Off Btm: 2014.03.06 @ 12:01:00

TEST COMMENT: 1st Open 30 minutes Weak building blow built to 1.5 inches into a 5 gallon bucket of water.
 1st Shut in 60 minutes No blow back
 2nd Open 16 minutes Dead flushed tool no help.
 2nd Shut in 30 minutes No blow back



PRESSURE SUMMARY

Time (Min.)	Pressure (psig)	Temp (deg F)	Annotation
0	1700.83	98.05	Initial Hydro-static
1	37.00	97.77	Open To Flow (1)
33	39.30	101.69	Shut-In(1)
92	143.22	105.64	End Shut-In(1)
92	38.78	105.64	Open To Flow (2)
108	40.99	106.40	Shut-In(2)
136	61.16	107.52	End Shut-In(2)
136	1634.64	108.52	Final Hydro-static

Recovery

Length (ft)	Description	Volume (bbl)
7.00	Very lightly oil spotted mud Mud100%	0.10

Gas Rates

Choke (inches)	Pressure (psig)	Gas Rate (Mcf/d)



DRILL STEM TEST REPORT

TOOL DIAGRAM

F G Holl Company
 9431 East Central Ste 100
 Wichita Kansas 67206
 ATTN: Rene Husted

7-20s-14w-Barton
Rudiger 1-7
 Job Ticket: 19268 **DST#: 3**
 Test Start: 2014.03.06 @ 08:37:00

Tool Information

Drill Pipe:	Length: 3396.00 ft	Diameter: 3.80 inches	Volume: 47.64 bbl	Tool Weight: 2000.00 lb
Heavy Wt. Pipe:	Length: 0.00 ft	Diameter: 0.00 inches	Volume: 0.00 bbl	Weight set on Packer: 20000.00 lb
Drill Collar:	Length: 0.00 ft	Diameter: 0.00 inches	Volume: 0.00 bbl	Weight to Pull Loose: 48000.00 lb
			<u>Total Volume: 47.64 bbl</u>	Tool Chased 0.00 ft
Drill Pipe Above KB:	12.00 ft			String Weight: Initial 45000.00 lb
Depth to Top Packer:	3412.00 ft			Final 45000.00 lb
Depth to Bottom Packer:	ft			
Interval between Packers:	21.00 ft			
Tool Length:	49.00 ft			
Number of Packers:	2	Diameter: 6.75 inches		

Tool Comments:

Tool Description	Length (ft)	Serial No.	Position	Depth (ft)	Accum. Lengths
Shut In Tool	5.00			3389.00	
Hydraulic tool	5.00			3394.00	
Jars	6.00			3400.00	
Safety Joint	2.00			3402.00	
Top Packer	5.00			3407.00	
Packer	5.00			3412.00	28.00 Bottom Of Top Packer
Perforations	16.00			3428.00	
Recorder	0.00	6651	Inside	3428.00	
Recorder	0.00	8525	Outside	3428.00	
Bull Plug	5.00			3433.00	21.00 Anchor Tool
Total Tool Length:	49.00				



DRILL STEM TEST REPORT

FLUID SUMMARY

F G Holl Company

7-20s-14w-Barton

9431 East Central Ste 100
Wichita Kansas 67206

Rudiger 1-7

Job Ticket: 19268

DST#: 3

ATTN: Rene Husted

Test Start: 2014.03.06 @ 08:37:00

Mud and Cushion Information

Mud Type: Gel Chem
Mud Weight: 9.00 lb/gal
Viscosity: 61.00 sec/qt
Water Loss: 6.00 in³
Resistivity: ohm.m
Salinity: 7700.00 ppm
Filter Cake: 1.00 inches

Cushion Type:
Cushion Length: ft
Cushion Volume: bbl
Gas Cushion Type:
Gas Cushion Pressure: psig

Oil API: deg API
Water Salinity: ppm

Recovery Information

Recovery Table

Length ft	Description	Volume bbl
7.00	Very lightly oil spotted mud Mud100%	0.098

Total Length: 7.00 ft Total Volume: 0.098 bbl

Num Fluid Samples: 0

Num Gas Bombs: 0

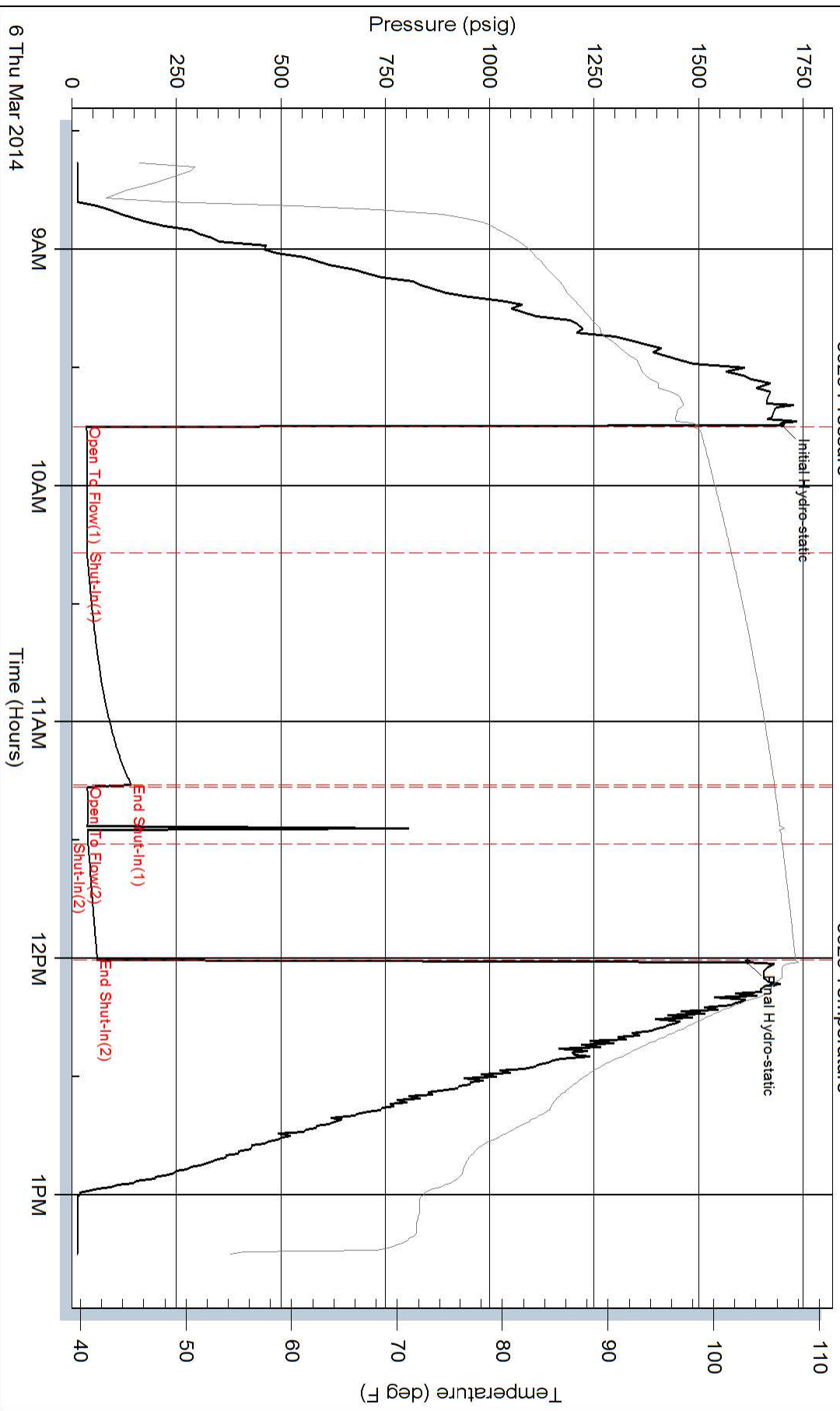
Serial #:

Laboratory Name:

Laboratory Location:

Recovery Comments:

Pressure vs. Time



Pressure vs. Time

