



## DRILL STEM TEST REPORT

Prepared For: **F G Holl Company**

9431 East Central Ste 100  
Wichita Kansas 67206

ATTN: Rene Husted

**Rudiger 1-7**

**7-20s-14w-Barton**

Start Date: 2014.03.08 @ 04:30:00

End Date: 2014.03.08 @ 09:29:30

Job Ticket #: 19271                      DST #: 6

Superior Testers Enterprises LLC  
PO Box 138 Great Bend KS 67530  
1-800-792-6902

Printed: 2014.03.08 @ 22:54:48



# DRILL STEM TEST REPORT

F G Holl Company  
 9431 East Central Ste 100  
 Wichita Kansas 67206  
 ATTN: Rene Husted

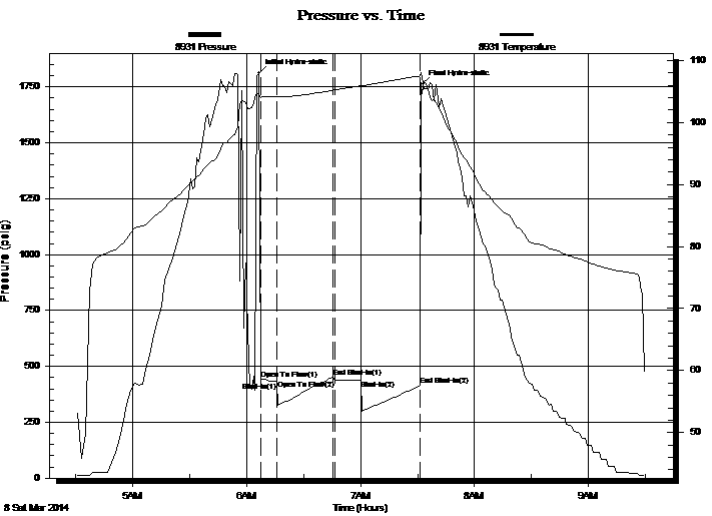
**7-20s-14w-Barton**  
**Rudiger 1-7**  
 Job Ticket: 19271      **DST#: 6**  
 Test Start: 2014.03.08 @ 04:30:00

## GENERAL INFORMATION:

Formation: **arbuckle**  
 Deviated: No Whipstock: ft (KB)  
 Time Tool Opened: 06:07:30  
 Time Test Ended: 09:29:30  
 Interval: **3611.00 ft (KB) To 3620.00 ft (KB) (TVD)**  
 Total Depth: 3620.00 ft (KB) (TVD)  
 Hole Diameter: 7.88 inches Hole Condition: Fair  
 Test Type: Conventional Bottom Hole (Initial)  
 Tester: Dustin Ellis  
 Unit No: 3315-Great Bend-22  
 Reference Elevations: 1919.00 ft (KB)  
 1911.00 ft (CF)  
 KB to GR/CF: 8.00 ft

**Serial #: 8931      Inside**  
 Press@RunDepth: 437.66 psig @ 3615.00 ft (KB)      Capacity: 5000.00 psig  
 Start Date: 2014.03.08      End Date: 2014.03.08      Last Calib.: 2014.03.08  
 Start Time: 04:30:00      End Time: 09:29:30      Time On Btm: 2014.03.08 @ 06:06:30  
 Time Off Btm: 2014.03.08 @ 07:32:00

**TEST COMMENT:** 1st Open 15 Minutes Weak blow that died off.  
 1st Shut in 30 minutes No blow back.  
 2nd Open 15 minutes Dead .  
 2nd Shut in 30 minutes No blow back



## PRESSURE SUMMARY

Time (Min.)	Pressure (psig)	Temp (deg F)	Annotation
0	1811.57	104.48	Initial Hydro-static
1	443.73	104.08	Open To Flow (1)
10	430.33	104.17	Shut-In(1)
39	453.90	105.17	End Shut-In(1)
40	438.12	105.22	Open To Flow (2)
54	437.66	105.92	Shut-In(2)
86	415.00	107.51	End Shut-In(2)
86	1761.00	108.06	Final Hydro-static

## Recovery

Length (ft)	Description	Volume (bbl)
427.00	Mud 100%	5.99

## Gas Rates

Choke (inches)	Pressure (psig)	Gas Rate (Mcf/d)



# DRILL STEM TEST REPORT

F G Holl Company  
 9431 East Central Ste 100  
 Wichita Kansas 67206  
 ATTN: Rene Husted

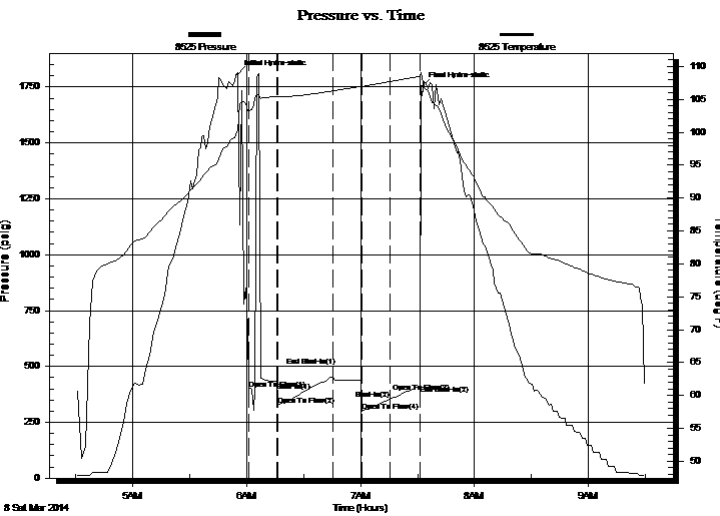
**7-20s-14w-Barton**  
**Rudiger 1-7**  
 Job Ticket: 19271      **DST#: 6**  
 Test Start: 2014.03.08 @ 04:30:00

## GENERAL INFORMATION:

Formation: **arbuckle**  
 Deviated: No Whipstock: ft (KB)  
 Time Tool Opened: 06:07:30  
 Time Test Ended: 09:29:30  
 Test Type: Conventional Bottom Hole (Initial)  
 Tester: Dustin Ellis  
 Unit No: 3315-Great Bend-22  
 Interval: **3611.00 ft (KB) To 3620.00 ft (KB) (TVD)**  
 Total Depth: 3620.00 ft (KB) (TVD)  
 Reference Elevations: 1919.00 ft (KB)  
 1911.00 ft (CF)  
 Hole Diameter: 7.88 inches Hole Condition: Fair  
 KB to GR/CF: 8.00 ft

**Serial #: 8525      Outside**  
 Press@RunDepth: 415.32 psig @ 3615.00 ft (KB)      Capacity: 5000.00 psig  
 Start Date: 2014.03.08      End Date: 2014.03.08      Last Calib.: 2014.03.08  
 Start Time: 04:30:00      End Time: 09:30:00      Time On Btm: 2014.03.08 @ 05:55:30  
 Time Off Btm: 2014.03.08 @ 07:32:00

**TEST COMMENT:** 1st Open 15 Minutes Weak blow that died off.  
 1st Shut in 30 minutes No blow back.  
 2nd Open 15 minutes Dead .  
 2nd Shut in 30 minutes No blow back



## PRESSURE SUMMARY

Time (Min.)	Pressure (psig)	Temp (deg F)	Annotation
0	1808.09	100.22	Initial Hydro-static
6	399.48	103.14	Open To Flow (1)
21	430.11	105.38	Shut-In(1)
21	326.36	105.35	Open To Flow (2)
50	454.12	106.30	Open To Flow (3)
65	438.98	106.97	End Shut-In(1)
65	299.55	106.96	Open To Flow (4)
80	353.20	107.71	Shut-In(2)
96	415.32	108.51	End Shut-In(2)
97	1750.69	109.10	Final Hydro-static

## Recovery

Length (ft)	Description	Volume (bbl)
427.00	Mud 100%	5.99

## Gas Rates

Choke (inches)	Pressure (psig)	Gas Rate (Mcf/d)



# DRILL STEM TEST REPORT

TOOL DIAGRAM

F G Holl Company  
 9431 East Central Ste 100  
 Wichita Kansas 67206  
 ATTN: Rene Husted

**7-20s-14w-Barton**  
**Rudiger 1-7**  
 Job Ticket: 19271      **DST#: 6**  
 Test Start: 2014.03.08 @ 04:30:00

## Tool Information

Drill Pipe:	Length: 3590.00 ft	Diameter: 3.80 inches	Volume: 50.36 bbl	Tool Weight:	2000.00 lb
Heavy Wt. Pipe:	Length: 0.00 ft	Diameter: 0.00 inches	Volume: 0.00 bbl	Weight set on Packer:	20000.00 lb
Drill Collar:	Length: 0.00 ft	Diameter: 0.00 inches	Volume: 0.00 bbl	Weight to Pull Loose:	52000.00 lb
			<u>Total Volume: 50.36 bbl</u>	Tool Chased	48000.00 ft
Drill Pipe Above KB:	7.00 ft			String Weight: Initial	49000.00 lb
Depth to Top Packer:	3611.00 ft			Final	49000.00 lb
Depth to Bottom Packer:	ft				
Interval between Packers:	9.00 ft				
Tool Length:	37.00 ft				
Number of Packers:	2	Diameter: 6.75 inches			

Tool Comments:

Tool Description	Length (ft)	Serial No.	Position	Depth (ft)	Accum. Lengths
Shut In Tool	5.00			3588.00	
Hydraulic tool	5.00			3593.00	
Jars	6.00			3599.00	
Safety Joint	2.00			3601.00	
Top Packer	5.00			3606.00	
Packer	5.00			3611.00	28.00      Bottom Of Top Packer
Perforations	4.00			3615.00	
Recorder	0.00	8931	Inside	3615.00	
Recorder	0.00	8525	Outside	3615.00	
Bull Plug	5.00			3620.00	9.00      Anchor Tool
<b>Total Tool Length:</b>	<b>37.00</b>				



# DRILL STEM TEST REPORT

FLUID SUMMARY

F G Holl Company  
9431 East Central Ste 100  
Wichita Kansas 67206  
ATTN: Rene Husted

**7-20s-14w-Barton**  
**Rudiger 1-7**  
Job Ticket: 19271      **DST#: 6**  
Test Start: 2014.03.08 @ 04:30:00

## Mud and Cushion Information

Mud Type: Gel Chem	Cushion Type:	Oil API:	deg API
Mud Weight: 9.00 lb/gal	Cushion Length: ft	Water Salinity:	ppm
Viscosity: 44.00 sec/qt	Cushion Volume: bbl		
Water Loss: 8.80 in <sup>3</sup>	Gas Cushion Type:		
Resistivity: ohm.m	Gas Cushion Pressure: psig		
Salinity: 6900.00 ppm			
Filter Cake: 1.00 inches			

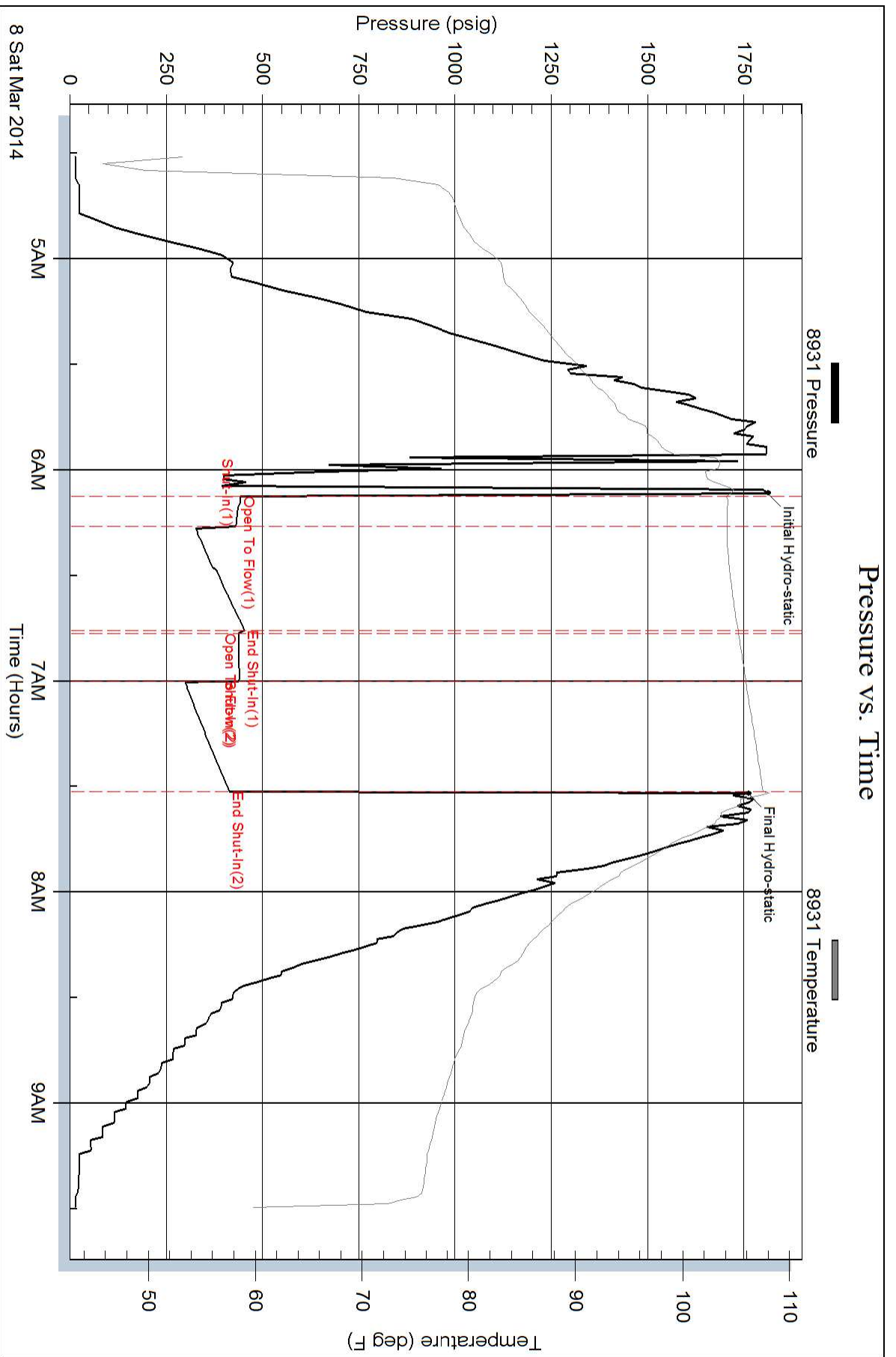
## Recovery Information

Recovery Table

Length ft	Description	Volume bbl
427.00	Mud 100%	5.990

Total Length: 427.00 ft      Total Volume: 5.990 bbl  
Num Fluid Samples: 0      Num Gas Bombs: 0      Serial #:  
Laboratory Name:      Laboratory Location:  
Recovery Comments:

### Pressure vs. Time



# Pressure vs. Time

