



DRILL STEM TEST REPORT

Prepared For: **F.G. Holl Company**

9431 East Central STE 100
Wichita Kansas 67206

ATTN: Rene Husted

Calcara unit 1-19

19-19s-14-Barton

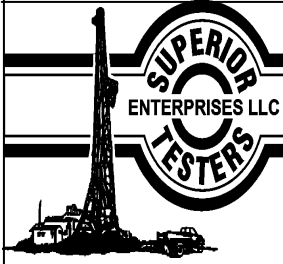
Start Date: 2014.06.11 @ 03:38:00

End Date: 2014.06.11 @ 13:11:30

Job Ticket #: 18339 DST #: 13

Superior Testers Enterprises LLC
PO Box 138 Great Bend KS 67530
1-800-792-6902

Printed: 2014.06.12 @ 02:29:55



DRILL STEM TEST REPORT

F.G. Holl Company
 9431 East Central STE 100
 Wichita Kansas 67206
 ATTN: Rene Husted

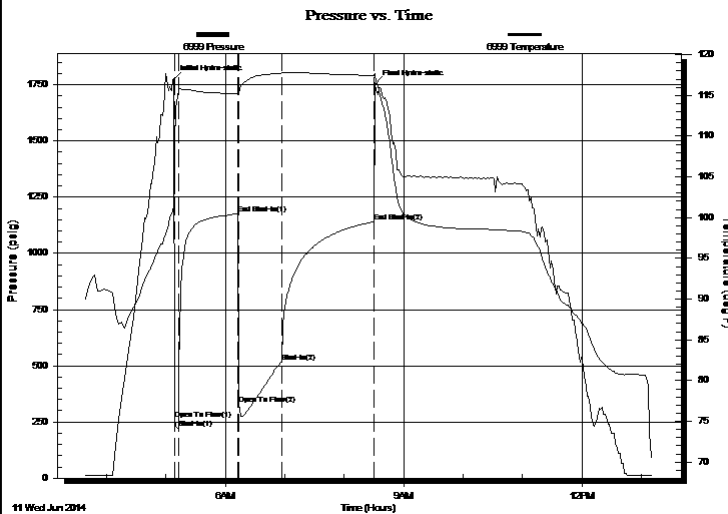
19-19s-14-Barton
Calcara unit 1-19
 Job Ticket: 18339 **DST#: 13**
 Test Start: 2014.06.11 @ 03:38:00

GENERAL INFORMATION:

Formation: **Arbuckle**
 Deviated: No Whipstock: ft (KB)
 Test Type: Conventional Bottom Hole (Initial)
 Time Tool Opened: 05:09:00 Tester: Dustin Ellis
 Time Test Ended: 13:11:30 Unit No: 3315-Great Bend-15
 Interval: **3546.00 ft (KB) To 3555.00 ft (KB) (TVD)** Reference Elevations: 1904.00 ft (KB)
 Total Depth: 3555.00 ft (KB) (TVD) 1896.00 ft (CF)
 Hole Diameter: 7.88 inches Hole Condition: Fair KB to GR/CF: 8.00 ft

Serial #: 6999 Outside
 Press@RunDepth: 518.17 psig @ 3550.00 ft (KB) Capacity: 5000.00 psig
 Start Date: 2014.06.11 End Date: 2014.06.11 Last Calib.: 2014.06.12
 Start Time: 03:38:00 End Time: 13:11:30 Time On Btm: 2014.06.11 @ 05:08:00
 Time Off Btm: 2014.06.11 @ 08:31:30

TEST COMMENT: 1st Op;en 5 minutes Strong blow built to the bottom of a 5 gallon bucket of water instantly
 1st Shut in 60 Yes blow back
 2nd Open 45 minutes Strong building blow built to the boottom of a 5 gallon bucket of water instantly.
 2nd Shut in 90 minutes Yes



PRESSURE SUMMARY

Time (Min.)	Pressure (psig)	Temp (deg F)	Annotation
0	1772.93	101.31	Initial Hydro-static
1	262.17	109.03	Open To Flow (1)
5	220.04	115.63	Shut-In(1)
65	1176.33	115.25	End Shut-In(1)
66	328.42	115.28	Open To Flow (2)
109	518.17	117.70	Shut-In(2)
203	1140.45	117.43	End Shut-In(2)
204	1753.04	117.48	Final Hydro-static

Recovery

Length (ft)	Description	Volume (bbl)
2674.00	Clean gassy oil 100%	37.51
126.00	Muddy water Water 80%Mud 20%	1.77
0.00	Chlorides 23,000 @.2ohms	0.00

Gas Rates

Choke (inches)	Pressure (psig)	Gas Rate (Mcf/d)



DRILL STEM TEST REPORT

TOOL DIAGRAM

F.G. Holl Company
 9431 East Central STE 100
 Wichita Kansas 67206
 ATTN: Rene Husted

19-19s-14-Barton
Calcara unit 1-19
 Job Ticket: 18339 **DST#: 13**
 Test Start: 2014.06.11 @ 03:38:00

Tool Information

Drill Pipe:	Length: 3533.00 ft	Diameter: 3.80 inches	Volume: 49.56 bbl	Tool Weight: 2000.00 lb
Heavy Wt. Pipe:	Length: 0.00 ft	Diameter: 0.00 inches	Volume: 0.00 bbl	Weight set on Packer: 20000.00 lb
Drill Collar:	Length: 0.00 ft	Diameter: 0.00 inches	Volume: 0.00 bbl	Weight to Pull Loose: 66000.00 lb
			<u>Total Volume: 49.56 bbl</u>	Tool Chased 0.00 ft
Drill Pipe Above KB:	15.00 ft			String Weight: Initial 55000.00 lb
Depth to Top Packer:	3546.00 ft			Final 60000.00 lb
Depth to Bottom Packer:	ft			
Interval between Packers:	9.00 ft			
Tool Length:	37.00 ft			
Number of Packers:	2	Diameter: 6.75 inches		

Tool Comments:

Tool Description	Length (ft)	Serial No.	Position	Depth (ft)	Accum. Lengths
------------------	-------------	------------	----------	------------	----------------

Shut In Tool	5.00			3523.00	
Hydraulic tool	5.00			3528.00	
Jars	6.00			3534.00	
Safety Joint	2.00			3536.00	
Top Packer	5.00			3541.00	
Packer	5.00			3546.00	28.00 Bottom Of Top Packer
Perforations	4.00			3550.00	
Recorder	0.00	6731	Inside	3550.00	
Recorder	0.00	6999	Outside	3550.00	
Bull Plug	5.00			3555.00	9.00 Anchor Tool
Total Tool Length:	37.00				



DRILL STEM TEST REPORT

FLUID SUMMARY

F.G. Holl Company

19-19s-14-Barton

9431 East Central STE 100
Wichita Kansas 67206

Calcara unit 1-19

Job Ticket: 18339

DST#: 13

ATTN: Rene Husted

Test Start: 2014.06.11 @ 03:38:00

Mud and Cushion Information

Mud Type: Gel Chem
Mud Weight: 9.00 lb/gal
Viscosity: 46.00 sec/qt
Water Loss: 9.20 in³
Resistivity: ohm.m
Salinity: 7200.00 ppm
Filter Cake: 1.00 inches

Cushion Type:
Cushion Length: ft
Cushion Volume: bbl
Gas Cushion Type:
Gas Cushion Pressure: psig

Oil API: deg API
Water Salinity: ppm

Recovery Information

Recovery Table

Length ft	Description	Volume bbl
2674.00	Clean gassy oil 100%	37.509
126.00	Muddy water Water 80%Mud 20%	1.767
0.00	Chlorides 23,000 @.2ohms	0.000

Total Length: 2800.00 ft Total Volume: 39.276 bbl

Num Fluid Samples: 0

Num Gas Bombs: 0

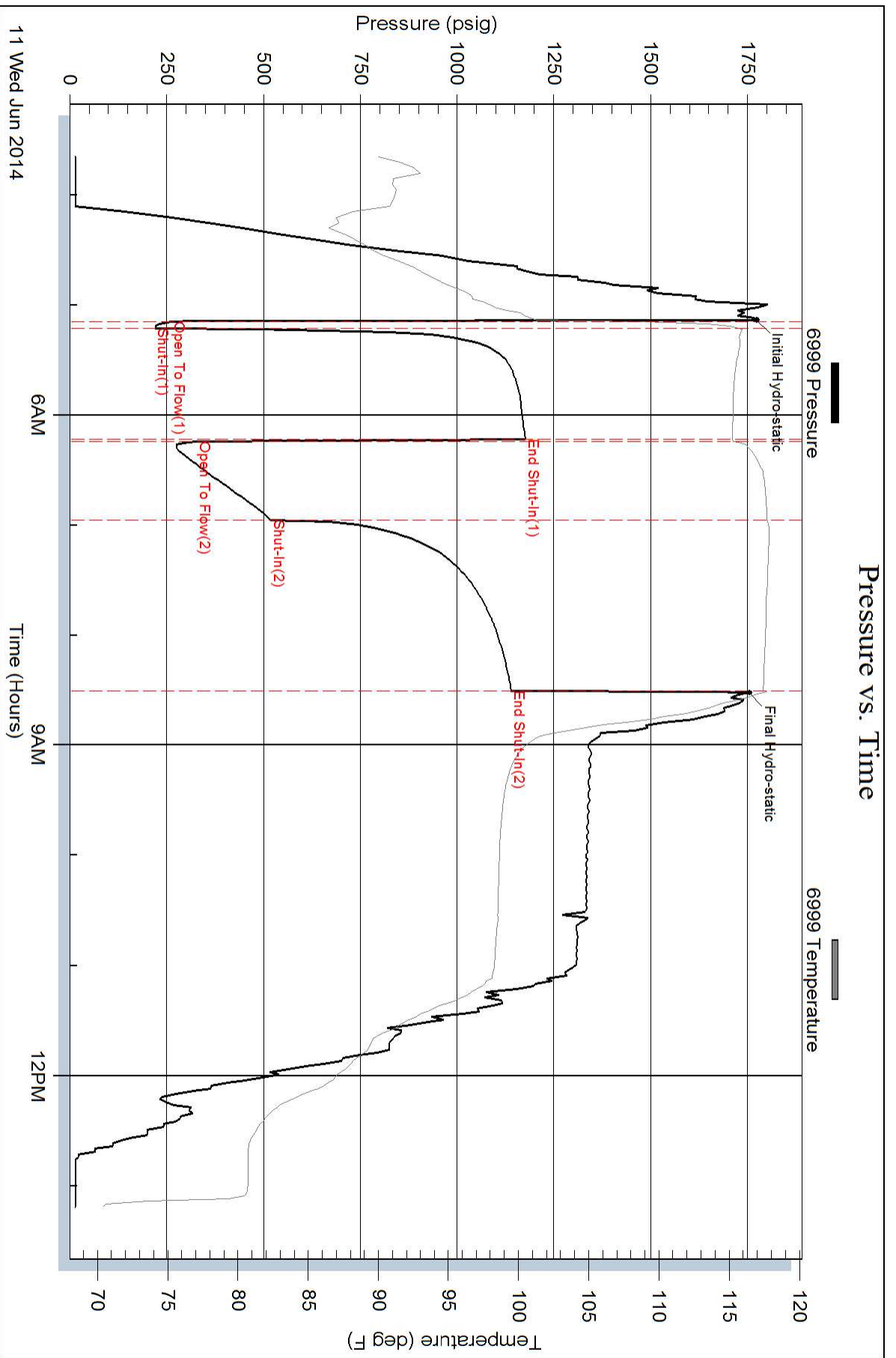
Serial #:

Laboratory Name:

Laboratory Location:

Recovery Comments:

Pressure vs. Time



Pressure vs. Time

