



DRILL STEM TEST REPORT

Prepared For: **John O Farmer Inc**

PO Box 352
Russell KS 67665

ATTN: Austin Klaus

Camp Unit #1

35 14s 14w Russell,KS

Start Date: 2014.04.21 @ 22:14:00

End Date: 2014.04.22 @ 05:00:00

Job Ticket #: 57596 DST #: 1

Trilobite Testing, Inc
PO Box 362 Hays, KS 67601
ph: 785-625-4778 fax: 785-625-5620

Printed: 2014.04.25 @ 14:02:31

John O Farmer Inc
35 14s 14w Russell,KS
Camp Unit #1
DST # 1
LKC " C "
2014.04.21



**TRILOBITE
TESTING, INC**

DRILL STEM TEST REPORT

John O Farmer Inc

35 14s 14w Russell, KS

PO Box 352
Russell KS 67665

Camp Unit #1

Job Ticket: 57596

DST#: 1

ATTN: Austin Klaus

Test Start: 2014.04.21 @ 22:14:00

GENERAL INFORMATION:

Formation: **LKC " C "**

Deviated: No Whipstock: ft (KB)

Time Tool Opened: 00:20:15

Time Test Ended: 05:00:00

Test Type: Conventional Bottom Hole (Initial)

Tester: Jim Svaty

Unit No: 76

Interval: 2928.00 ft (KB) To 2968.00 ft (KB) (TVD)

Reference Elevations: 1752.00 ft (KB)

Total Depth: 2968.00 ft (KB) (TVD)

1744.00 ft (CF)

Hole Diameter: 7.88 inches Hole Condition: Fair

KB to GR/CF: 8.00 ft

Serial #: 8289 Outside

Press@RunDepth: 28.66 psig @ 2933.00 ft (KB)

Capacity: 8000.00 psig

Start Date: 2014.04.21

End Date:

2014.04.22

Last Calib.:

2014.04.22

Start Time: 22:14:02

End Time:

05:00:00

Time On Btm:

2014.04.22 @ 00:20:00

Time Off Btm:

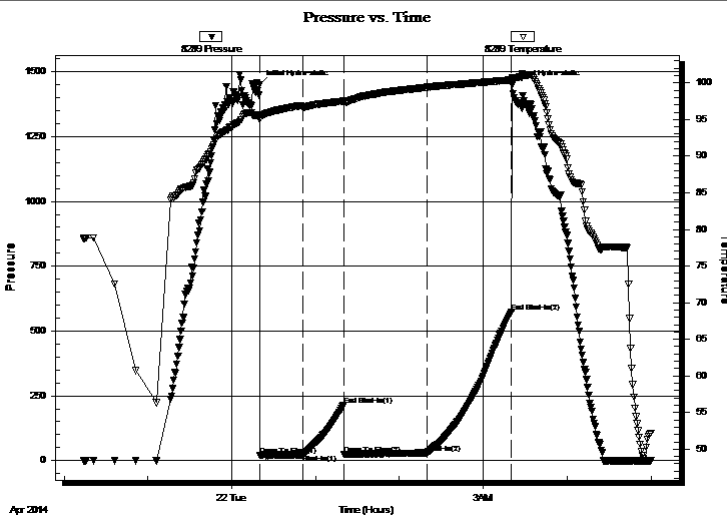
2014.04.22 @ 03:20:45

TEST COMMENT: 30-IFP- Packer Failed on 1st Open 2nd Open Good Seat Surface Blow Building to 9"

30-ISIP- No Blow

60-FFP- BOB in 9 min.

60-FSIP- No Blow



PRESSURE SUMMARY

Time (Min.)	Pressure (psig)	Temp (deg F)	Annotation
0	1449.49	95.51	Initial Hydro-static
1	19.95	95.02	Open To Flow (1)
31	22.33	96.66	Shut-In(1)
60	213.83	97.50	End Shut-In(1)
61	23.11	97.43	Open To Flow (2)
120	28.66	99.39	Shut-In(2)
181	573.24	100.41	End Shut-In(2)
181	1448.86	100.77	Final Hydro-static

Recovery

Length (ft)	Description	Volume (bbl)
40.00	OCM 20%o 80%m	0.56
0.00	270 GIP	0.00

Gas Rates

	Choke (inches)	Pressure (psig)	Gas Rate (Mcf/d)



**TRILOBITE
TESTING, INC**

DRILL STEM TEST REPORT

TOOL DIAGRAM

John O Farmer Inc

35 14s 14w Russell, KS

PO Box 352
Russell KS 67665

Camp Unit #1

Job Ticket: 57596

DST#: 1

ATTN: Austin Klaus

Test Start: 2014.04.21 @ 22:14:00

Tool Information

Drill Pipe:	Length: 2941.00 ft	Diameter: 3.80 inches	Volume: 41.25 bbl	Tool Weight: 2500.00 lb
Heavy Wt. Pipe:	Length: 0.00 ft	Diameter: 2.75 inches	Volume: 0.00 bbl	Weight set on Packer: 25000.00 lb
Drill Collar:	Length: 0.00 ft	Diameter: 2.25 inches	Volume: 0.00 bbl	Weight to Pull Loose: 47000.00 lb
			<u>Total Volume: 41.25 bbl</u>	Tool Chased 0.00 ft
Drill Pipe Above KB:	34.00 ft			String Weight: Initial 43000.00 lb
Depth to Top Packer:	2928.00 ft			Final 43000.00 lb
Depth to Bottom Packer:	ft			
Interval between Packers:	40.00 ft			
Tool Length:	61.00 ft			
Number of Packers:	2	Diameter: 6.75 inches		

Tool Comments:

Tool Description

Tool Description	Length (ft)	Serial No.	Position	Depth (ft)	Accum. Lengths
Change Over Sub	1.00			2908.00	
Shut In Tool	5.00			2913.00	
Hydraulic tool	5.00			2918.00	
Packer	5.00			2923.00	21.00 Bottom Of Top Packer
Packer	5.00			2928.00	
Stubb	1.00			2929.00	
Perforations	3.00			2932.00	
Change Over Sub	1.00			2933.00	
Recorder	0.00	8789	Inside	2933.00	
Recorder	0.00	8289	Outside	2933.00	
Blank Spacing	31.00			2964.00	
Change Over Sub	1.00			2965.00	
Bullnose	3.00			2968.00	40.00 Bottom Packers & Anchor

Total Tool Length: 61.00



**TRILOBITE
TESTING, INC**

DRILL STEM TEST REPORT

FLUID SUMMARY

John O Farmer Inc

35 14s 14w Russell, KS

PO Box 352
Russell KS 67665

Camp Unit #1

Job Ticket: 57596

DST#: 1

ATTN: Austin Klaus

Test Start: 2014.04.21 @ 22:14:00

Mud and Cushion Information

Mud Type: Gel Chem

Cushion Type:

Oil API:

deg API

Mud Weight: 9.00 lb/gal

Cushion Length:

ft

Water Salinity:

ppm

Viscosity: 49.00 sec/qt

Cushion Volume:

bbbl

Water Loss: 8.70 in³

Gas Cushion Type:

Resistivity: ohm.m

Gas Cushion Pressure:

psig

Salinity: 5000.00 ppm

Filter Cake: 1.00 inches

Recovery Information

Recovery Table

Length ft	Description	Volume bbl
40.00	OCM 20%o 80%m	0.561
0.00	270 GIP	0.000

Total Length: 40.00 ft Total Volume: 0.561 bbl

Num Fluid Samples: 0

Num Gas Bombs: 0

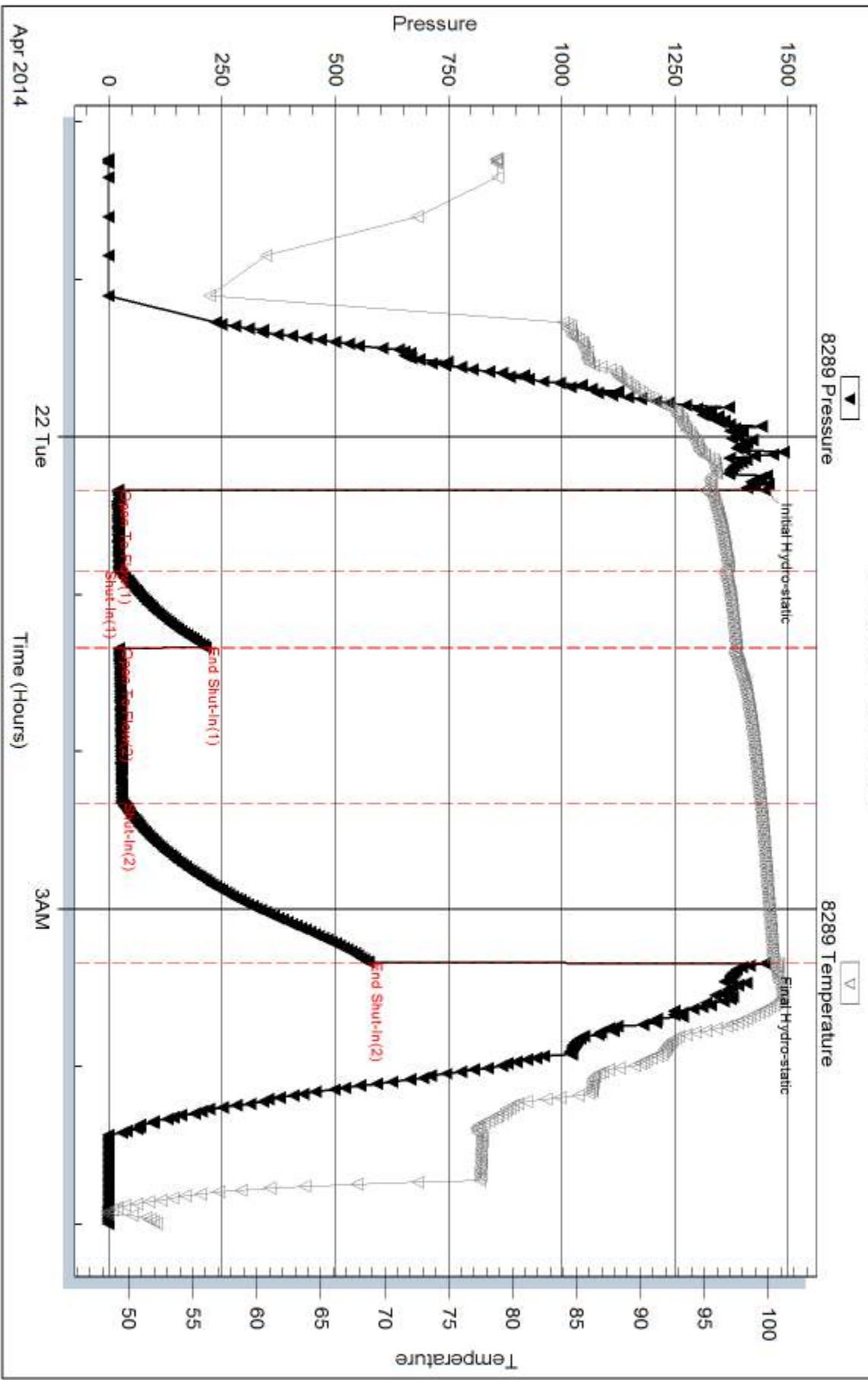
Serial #:

Laboratory Name:

Laboratory Location:

Recovery Comments:

Pressure vs. Time



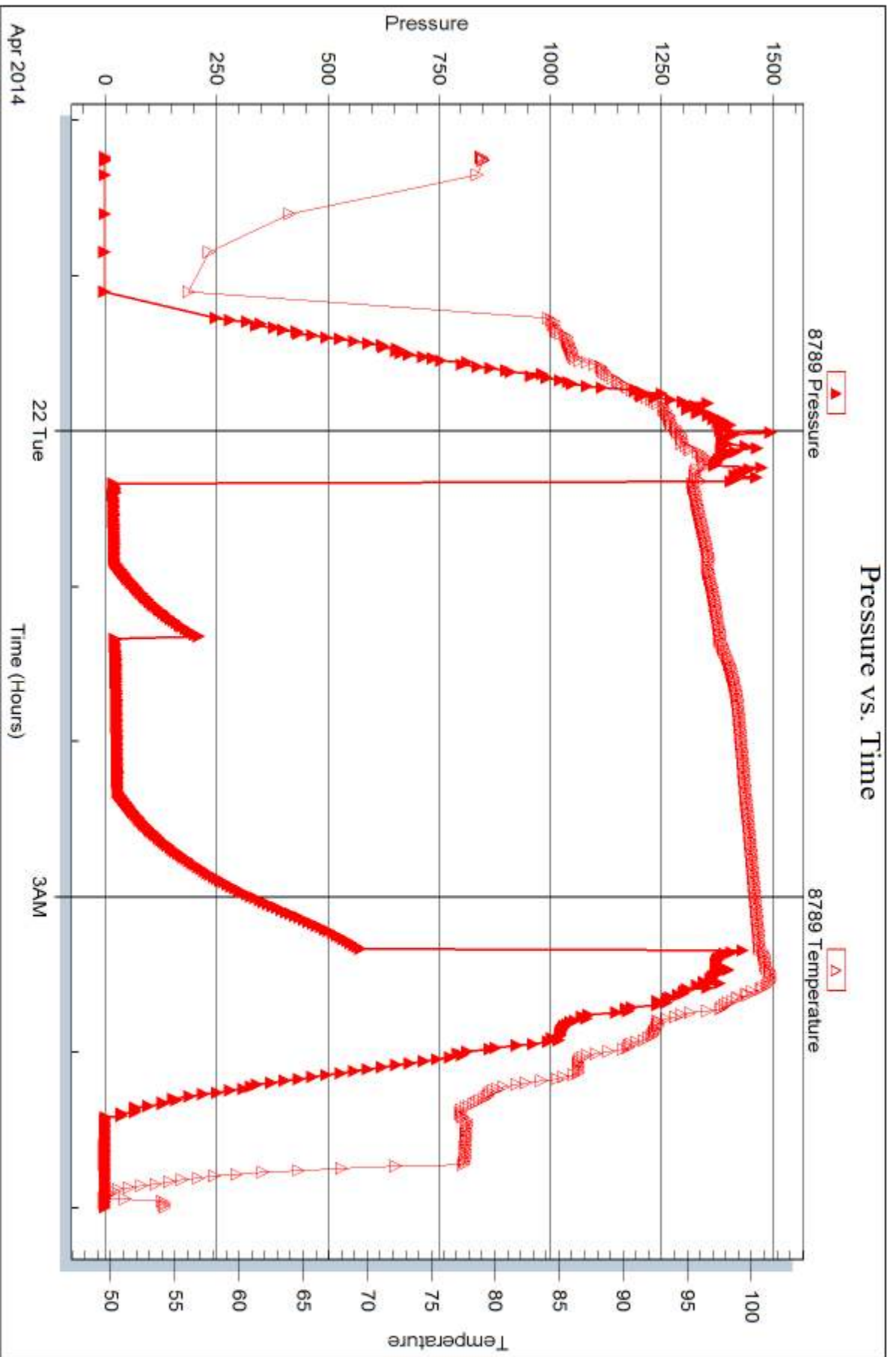
Serial #: 8789

Inside

John O Farmer Inc

Camp Unit #1

DST Test Number: 1



Tribble Testing, Inc

Ref. No: 57596

Printed: 2014.04.25 @ 14:02:32



DRILL STEM TEST REPORT

Prepared For: **John O Farmer Inc**

PO Box 352
Russell KS 67665

ATTN: Austin Klaus

Camp Unit #1

35 14s 14w Russell,KS

Start Date: 2014.04.22 @ 12:38:00

End Date: 2014.04.22 @ 18:42:00

Job Ticket #: 57597 DST #: 2

Trilobite Testing, Inc
PO Box 362 Hays, KS 67601
ph: 785-625-4778 fax: 785-625-5620

Printed: 2014.04.25 @ 14:02:00



**TRILOBITE
TESTING, INC**

DRILL STEM TEST REPORT

John O Farmer Inc

35 14s 14w Russell, KS

PO Box 352
Russell KS 67665

Camp Unit #1

Job Ticket: 57597

DST#: 2

ATTN: Austin Klaus

Test Start: 2014.04.22 @ 12:38:00

GENERAL INFORMATION:

Formation: **LKC "E-F"**

Deviated: No Whipstock: ft (KB)

Time Tool Opened: 14:19:15

Time Test Ended: 18:42:00

Test Type: Conventional Bottom Hole (Reset)

Tester: Jim Svaty

Unit No: 76

Interval: 2989.00 ft (KB) To 3018.00 ft (KB) (TVD)

Reference Elevations: 1752.00 ft (KB)

Total Depth: 3018.00 ft (KB) (TVD)

1744.00 ft (CF)

Hole Diameter: 7.88 inches Hole Condition: Fair

KB to GR/CF: 8.00 ft

Serial #: 8289 Outside

Press@RunDepth: 44.86 psig @ 2990.00 ft (KB)

Capacity: 8000.00 psig

Start Date: 2014.04.22

End Date:

2014.04.22

Last Calib.:

2014.04.22

Start Time: 12:38:02

End Time:

18:41:00

Time On Btm:

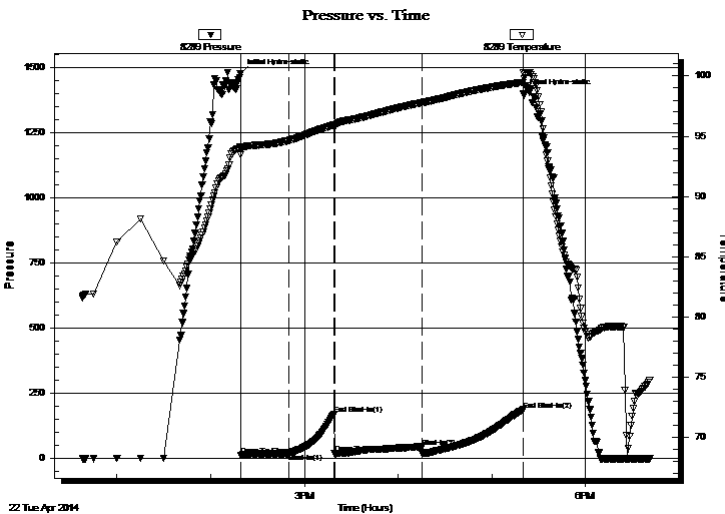
2014.04.22 @ 14:19:00

Time Off Btm:

2014.04.22 @ 17:20:15

TEST COMMENT: 30-IFP- Surface Blow Building to 2 3/4"
30-ISIP- No Blow
60-FFP- Surface Blow 3 1/4"
60-FSIP- No Blow

PRESSURE SUMMARY



Time (Min.)	Pressure (psig)	Temp (deg F)	Annotation
0	1475.13	94.14	Initial Hydro-static
1	12.67	93.44	Open To Flow (1)
31	20.04	94.64	Shut-In(1)
60	169.24	95.92	End Shut-In(1)
61	18.86	95.86	Open To Flow (2)
117	44.86	97.79	Shut-In(2)
181	186.90	99.48	End Shut-In(2)
182	1399.29	100.24	Final Hydro-static

Recovery

Length (ft)	Description	Volume (bbl)
30.00	Oil Speck WCM 25%w 75%m	0.42

* Recovery from multiple tests

Gas Rates

Choke (inches)	Pressure (psig)	Gas Rate (Mcf/d)



**TRILOBITE
TESTING, INC**

DRILL STEM TEST REPORT

John O Farmer Inc

35 14s 14w Russell,KS

PO Box 352
Russell KS 67665

Camp Unit #1

Job Ticket: 57597

DST#: 2

ATTN: Austin Klaus

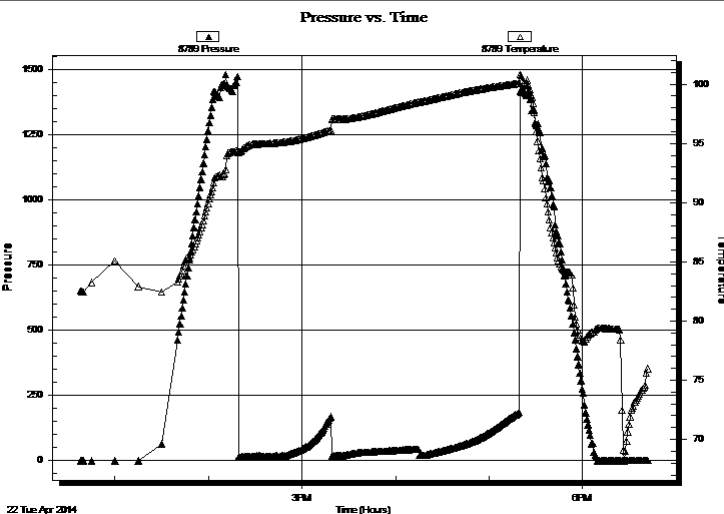
Test Start: 2014.04.22 @ 12:38:00

GENERAL INFORMATION:

Formation: **LKC " E-F "**
 Deviated: No Whipstock: ft (KB)
 Time Tool Opened: 14:19:15
 Time Test Ended: 18:42:00
 Interval: **2989.00 ft (KB) To 3018.00 ft (KB) (TVD)**
 Total Depth: 3018.00 ft (KB) (TVD)
 Hole Diameter: 7.88 inches Hole Condition: Fair
 Test Type: Conventional Bottom Hole (Reset)
 Tester: Jim Svaty
 Unit No: 76
 Reference Elevations: 1752.00 ft (KB)
 1744.00 ft (CF)
 KB to GR/CF: 8.00 ft

Serial #: 8789 Inside
 Press@RunDepth: psig @ 2990.00 ft (KB)
 Start Date: 2014.04.22 End Date: 2014.04.22
 Start Time: 12:38:02 End Time: 18:41:45
 Capacity: 8000.00 psig
 Last Calib.: 2014.04.22
 Time On Btm:
 Time Off Btm:

TEST COMMENT: 30-IFP- Surface Blow Building to 2 3/4"
 30-ISIP- No Blow
 60-FFP- Surface Blow 3 1/4"
 60-FSIP- No Blow



PRESSURE SUMMARY

Time (Min.)	Pressure (psig)	Temp (deg F)	Annotation

Recovery

Length (ft)	Description	Volume (bbl)
30.00	Oil Speck WCM 25%w 75%m	0.42

Gas Rates

Choke (inches)	Pressure (psig)	Gas Rate (Mcf/d)

* Recovery from multiple tests



**TRILOBITE
TESTING, INC**

DRILL STEM TEST REPORT

TOOL DIAGRAM

John O Farmer Inc

35 14s 14w Russell, KS

PO Box 352
Russell KS 67665

Camp Unit #1

Job Ticket: 57597

DST#: 2

ATTN: Austin Klaus

Test Start: 2014.04.22 @ 12:38:00

Tool Information

Drill Pipe:	Length: 2973.00 ft	Diameter: 3.80 inches	Volume: 41.70 bbl	Tool Weight: 2500.00 lb
Heavy Wt. Pipe:	Length: 0.00 ft	Diameter: 2.75 inches	Volume: 0.00 bbl	Weight set on Packer: 25000.00 lb
Drill Collar:	Length: 0.00 ft	Diameter: 2.25 inches	Volume: 0.00 bbl	Weight to Pull Loose: 45000.00 lb
			<u>Total Volume: 41.70 bbl</u>	Tool Chased 0.00 ft
Drill Pipe Above KB:	5.00 ft			String Weight: Initial 43000.00 lb
Depth to Top Packer:	2989.00 ft			Final 43000.00 lb
Depth to Bottom Packer:	ft			
Interval between Packers:	29.00 ft			
Tool Length:	50.00 ft			
Number of Packers:	2	Diameter: 6.75 inches		

Tool Comments:

Tool Description

Tool Description	Length (ft)	Serial No.	Position	Depth (ft)	Accum. Lengths
Change Over Sub	1.00			2969.00	
Shut In Tool	5.00			2974.00	
Hydraulic tool	5.00			2979.00	
Packer	5.00			2984.00	21.00 Bottom Of Top Packer
Packer	5.00			2989.00	
Stubb	1.00			2990.00	
Recorder	0.00	8789	Inside	2990.00	
Recorder	0.00	8289	Outside	2990.00	
Perforations	25.00			3015.00	
Bullnose	3.00			3018.00	29.00 Bottom Packers & Anchor
Total Tool Length:	50.00				



**TRILOBITE
TESTING, INC**

DRILL STEM TEST REPORT

FLUID SUMMARY

John O Farmer Inc

35 14s 14w Russell, KS

PO Box 352
Russell KS 67665

Camp Unit #1

Job Ticket: 57597

DST#: 2

ATTN: Austin Klaus

Test Start: 2014.04.22 @ 12:38:00

Mud and Cushion Information

Mud Type: Gel Chem

Cushion Type:

Oil API:

deg API

Mud Weight: 9.00 lb/gal

Cushion Length:

ft

Water Salinity:

15000 ppm

Viscosity: 52.00 sec/qt

Cushion Volume:

bbf

Water Loss: 7.96 in³

Gas Cushion Type:

Resistivity: ohm.m

Gas Cushion Pressure:

psig

Salinity: 7000.00 ppm

Filter Cake: 1.00 inches

Recovery Information

Recovery Table

Length ft	Description	Volume bbf
30.00	Oil Speck WCM 25%w 75%m	0.421

Total Length: 30.00 ft Total Volume: 0.421 bbf

Num Fluid Samples: 0

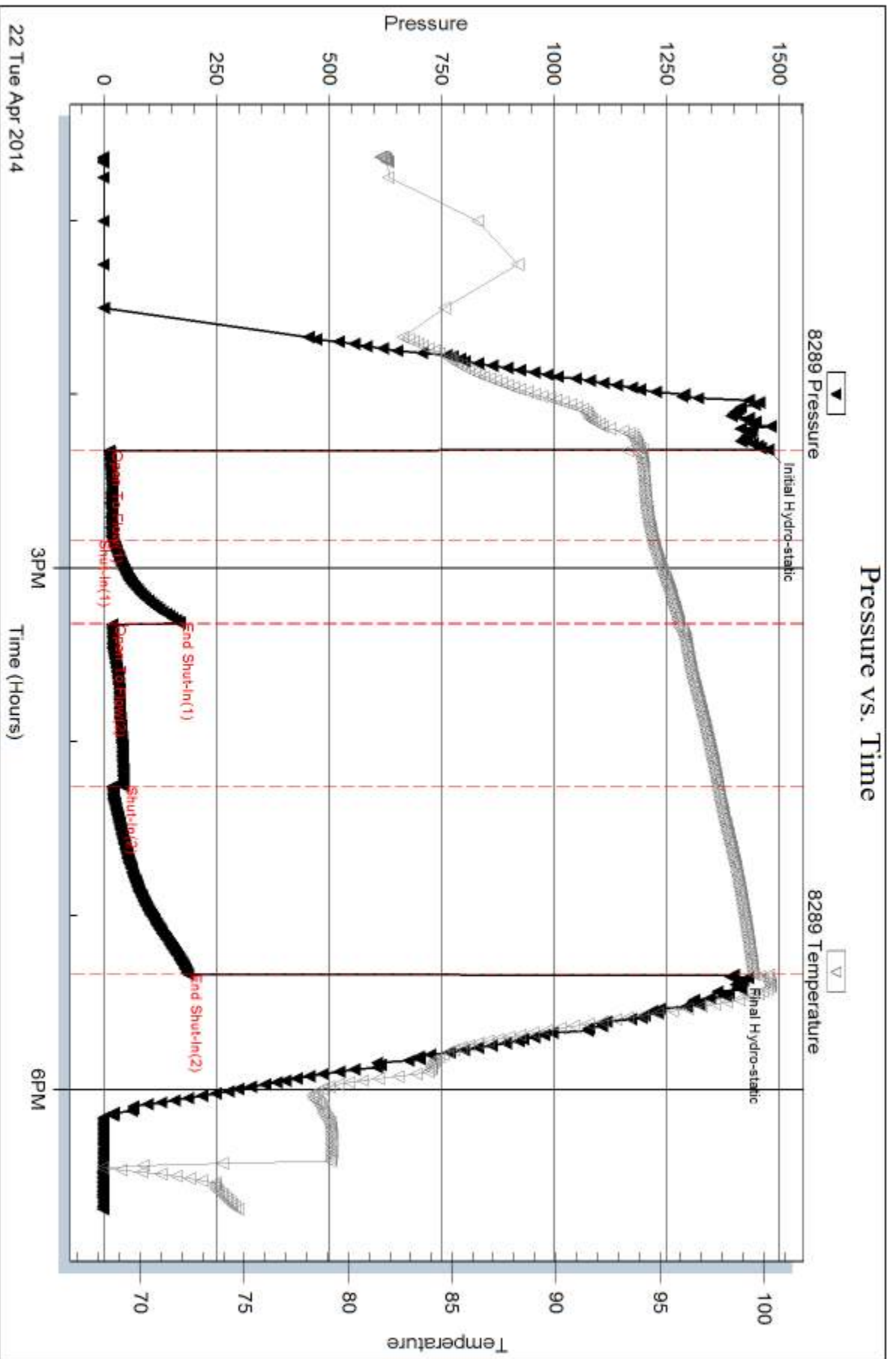
Num Gas Bombs: 0

Serial #:

Laboratory Name:

Laboratory Location:

Recovery Comments: .392 @ 77



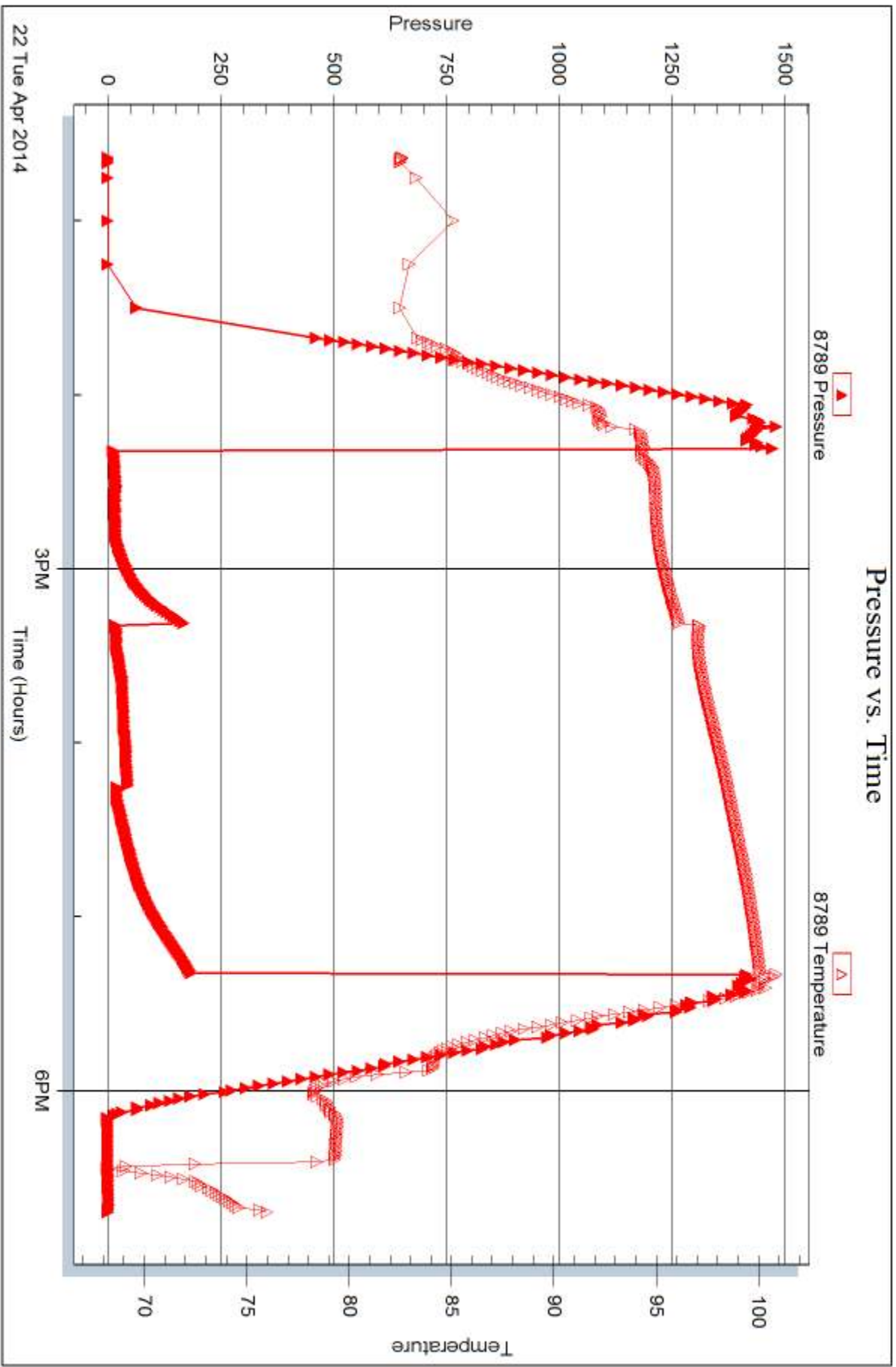
Serial #: 8789

Inside

John O Farmer Inc

Camp Unit #1

DST Test Number: 2



Trilobite Testing, Inc

Ref. No: 57597

Printed: 2014.04.25 @ 14:02:01



DRILL STEM TEST REPORT

Prepared For: **John O Farmer Inc**

PO Box 352
Russell KS 67665

ATTN: Austin Klaus

Camp Unit #1

35 14s 14w Russell,KS

Start Date: 2014.04.23 @ 04:09:00

End Date: 2014.04.23 @ 10:15:00

Job Ticket #: 57598 DST #: 3

Trilobite Testing, Inc

PO Box 362 Hays, KS 67601

ph: 785-625-4778 fax: 785-625-5620

Printed: 2014.04.25 @ 14:00:48



TRILOBITE TESTING, INC

DRILL STEM TEST REPORT

John O Farmer Inc

35 14s 14w Russell, KS

PO Box 352
Russell KS 67665

Camp Unit #1

Job Ticket: 57598

DST#: 3

ATTN: Austin Klaus

Test Start: 2014.04.23 @ 04:09:00

GENERAL INFORMATION:

Formation: **LKC " G "**

Deviated: No Whipstock: ft (KB)

Time Tool Opened: 05:44:45

Time Test Ended: 10:15:00

Test Type: Conventional Bottom Hole (Reset)

Tester: Jim Svaty

Unit No: 76

Interval: 3021.00 ft (KB) To 3068.00 ft (KB) (TVD)

Reference Elevations: 1752.00 ft (KB)

Total Depth: 3068.00 ft (KB) (TVD)

1744.00 ft (CF)

Hole Diameter: 7.88 inches Hole Condition: Fair

KB to GR/CF: 8.00 ft

Serial #: 8289 Outside

Press@RunDepth: 79.98 psig @ 3033.00 ft (KB)

Capacity: 8000.00 psig

Start Date: 2014.04.23

End Date:

2014.04.23

Last Calib.:

2014.04.23

Start Time:

04:09:02

End Time:

10:15:00

Time On Btm:

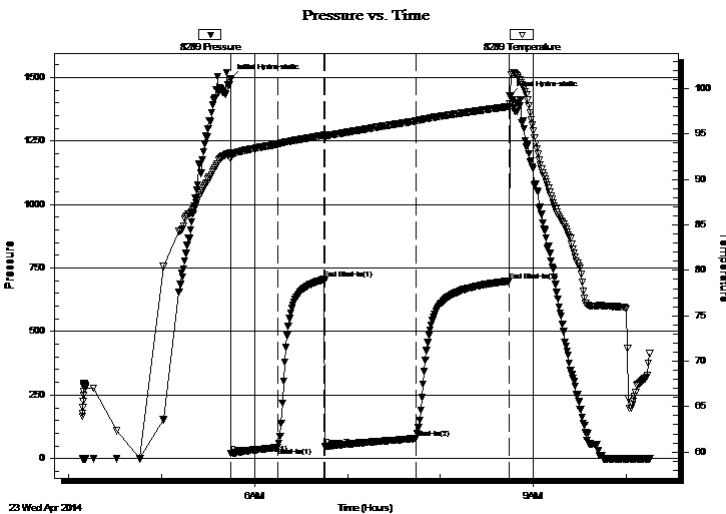
2014.04.23 @ 05:44:30

Time Off Btm:

2014.04.23 @ 08:44:45

TEST COMMENT: 30-IFP- Surface Blow Building to 7"
30-ISIP- No Blow
60-FFP- Surface Blow Building to 8"
60-FSIP- No Blow

PRESSURE SUMMARY



Time (Min.)	Pressure (psig)	Temp (deg F)	Annotation
0	1495.34	92.91	Initial Hydro-static
1	20.77	92.27	Open To Flow (1)
31	43.49	93.88	Shut-In(1)
61	705.12	94.86	End Shut-In(1)
61	46.69	94.63	Open To Flow (2)
120	79.98	96.44	Shut-In(2)
180	698.74	98.02	End Shut-In(2)
181	1428.64	98.31	Final Hydro-static

Recovery

Length (ft)	Description	Volume (bbl)
127.00	OSMCW 5% m 95% w	1.78

* Recovery from multiple tests

Gas Rates

Choke (inches)	Pressure (psig)	Gas Rate (Mcf/d)



**TRILOBITE
TESTING, INC**

DRILL STEM TEST REPORT

John O Farmer Inc

35 14s 14w Russell, KS

PO Box 352
Russell KS 67665

Camp Unit #1

Job Ticket: 57598

DST#: 3

ATTN: Austin Klaus

Test Start: 2014.04.23 @ 04:09:00

GENERAL INFORMATION:

Formation: **LKC " G "**

Deviated: No Whipstock: ft (KB)

Time Tool Opened: 05:44:45

Time Test Ended: 10:15:00

Test Type: Conventional Bottom Hole (Reset)

Tester: Jim Svaty

Unit No: 76

Interval: 3021.00 ft (KB) To 3068.00 ft (KB) (TVD)

Reference Elevations: 1752.00 ft (KB)

Total Depth: 3068.00 ft (KB) (TVD)

1744.00 ft (CF)

Hole Diameter: 7.88 inches Hole Condition: Fair

KB to GR/CF: 8.00 ft

Serial #: 8789

Inside

Press@RunDepth: psig @ 3033.00 ft (KB)

Capacity: 8000.00 psig

Start Date: 2014.04.23

End Date:

2014.04.23

Last Calib.:

2014.04.23

Start Time: 04:09:02

End Time:

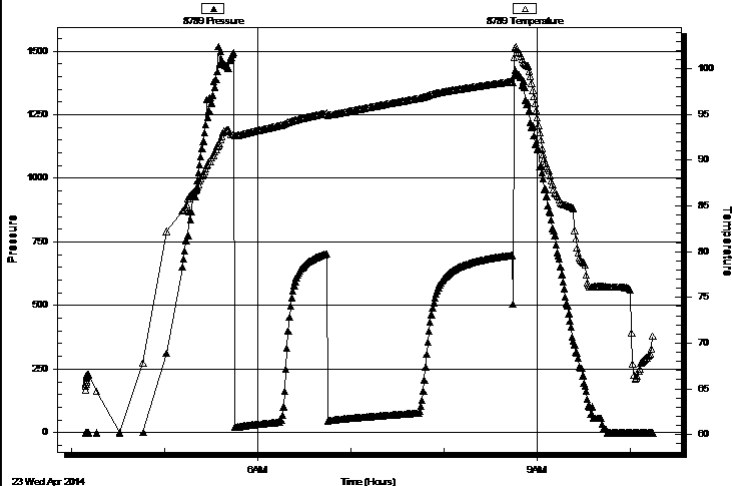
10:14:45

Time On Btm:

Time Off Btm:

TEST COMMENT: 30-IFP- Surface Blow Building to 7"
30-ISIP- No Blow
60-FFP- Surface Blow Building to 8"
60-FSIP- No Blow

Pressure vs. Time



PRESSURE SUMMARY

Time (Min.)	Pressure (psig)	Temp (deg F)	Annotation

Recovery

Length (ft)	Description	Volume (bbl)
127.00	OSMCW 5% m 95% w	1.78

Gas Rates

	Choke (inches)	Pressure (psig)	Gas Rate (Mcf/d)

* Recovery from multiple tests



**TRILOBITE
TESTING, INC**

DRILL STEM TEST REPORT

TOOL DIAGRAM

John O Farmer Inc

35 14s 14w Russell, KS

PO Box 352
Russell KS 67665

Camp Unit #1

Job Ticket: 57598

DST#: 3

ATTN: Austin Klaus

Test Start: 2014.04.23 @ 04:09:00

Tool Information

Drill Pipe:	Length: 3004.00 ft	Diameter: 3.80 inches	Volume: 42.14 bbl	Tool Weight: 2500.00 lb
Heavy Wt. Pipe:	Length: 0.00 ft	Diameter: 2.75 inches	Volume: 0.00 bbl	Weight set on Packer: 25000.00 lb
Drill Collar:	Length: 0.00 ft	Diameter: 2.25 inches	Volume: 0.00 bbl	Weight to Pull Loose: 47000.00 lb
			<u>Total Volume: 42.14 bbl</u>	Tool Chased 0.00 ft
Drill Pipe Above KB:	4.00 ft			String Weight: Initial 45000.00 lb
Depth to Top Packer:	3021.00 ft			Final 46000.00 lb
Depth to Bottom Packer:	ft			
Interval between Packers:	47.00 ft			
Tool Length:	68.00 ft			
Number of Packers:	2	Diameter: 6.75 inches		

Tool Comments:

Tool Description

Tool Description	Length (ft)	Serial No.	Position	Depth (ft)	Accum. Lengths
Change Over Sub	1.00			3001.00	
Shut In Tool	5.00			3006.00	
Hydraulic tool	5.00			3011.00	
Packer	5.00			3016.00	21.00 Bottom Of Top Packer
Packer	5.00			3021.00	
Stubb	1.00			3022.00	
Perforations	10.00			3032.00	
Change Over Sub	1.00			3033.00	
Recorder	0.00	8789	Inside	3033.00	
Recorder	0.00	8289	Outside	3033.00	
Blank Spacing	31.00			3064.00	
Change Over Sub	1.00			3065.00	
Bullnose	3.00			3068.00	47.00 Bottom Packers & Anchor

Total Tool Length: 68.00



**TRILOBITE
TESTING, INC**

DRILL STEM TEST REPORT

FLUID SUMMARY

John O Farmer Inc

35 14s 14w Russell, KS

PO Box 352
Russell KS 67665

Camp Unit #1

Job Ticket: 57598

DST#: 3

ATTN: Austin Klaus

Test Start: 2014.04.23 @ 04:09:00

Mud and Cushion Information

Mud Type: Gel Chem

Cushion Type:

Oil API:

deg API

Mud Weight: 9.00 lb/gal

Cushion Length:

ft

Water Salinity:

23000 ppm

Viscosity: 48.00 sec/qt

Cushion Volume:

bbl

Water Loss: 8.76 in³

Gas Cushion Type:

Resistivity: ohm.m

Gas Cushion Pressure:

psig

Salinity: 6000.00 ppm

Filter Cake: 1.00 inches

Recovery Information

Recovery Table

Length ft	Description	Volume bbl
127.00	OSMCW 5% _m 95% _w	1.781

Total Length: 127.00 ft Total Volume: 1.781 bbl

Num Fluid Samples: 0

Num Gas Bombs: 0

Serial #:

Laboratory Name:

Laboratory Location:

Recovery Comments: .297 @ 70

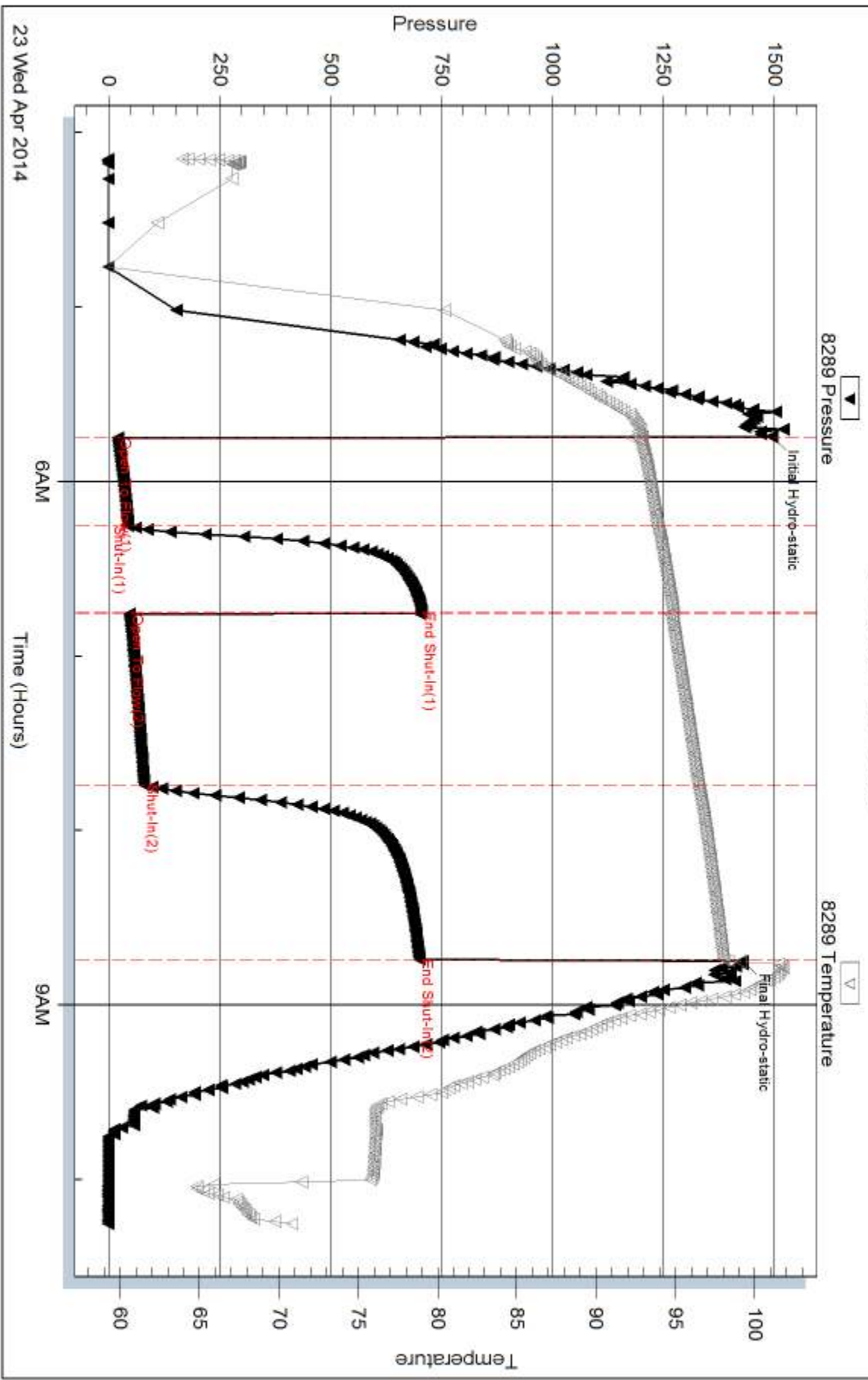
Serial #: 8289

Outside John O Farmer Inc

Camp Unit #1

DST Test Number: 3

Pressure vs. Time



Triobite Testing, Inc

Ref. No: 57598

Printed: 2014.04.25 @ 14:00:49

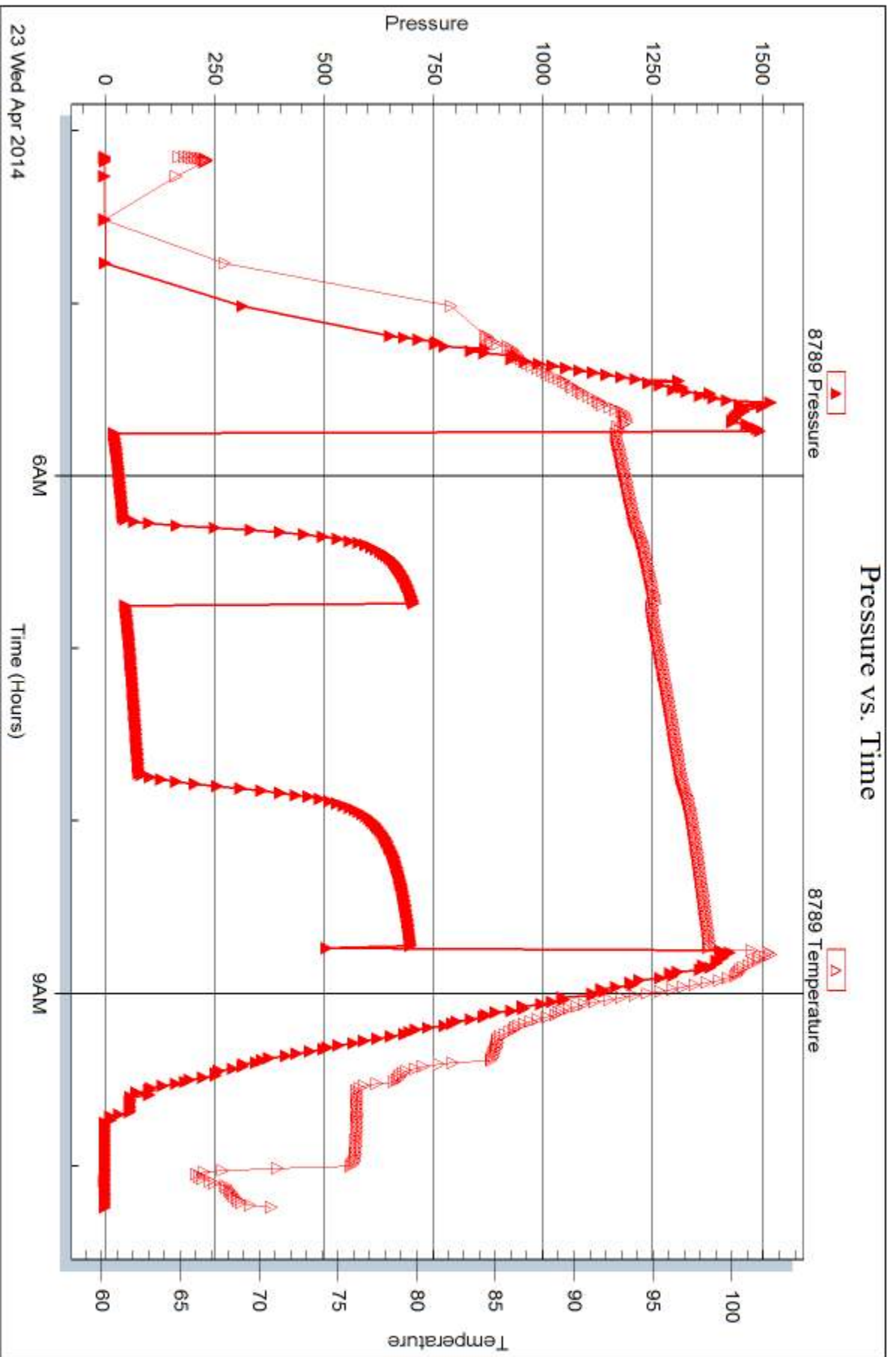
Serial #: 8789

Inside

John O Farmer Inc

Camp Unit #1

DST Test Number: 3



Triobite Testing, Inc

Ref. No: 57598

Printed: 2014.04.25 @ 14:00:49



DRILL STEM TEST REPORT

Prepared For: **John O Farmer Inc**

PO Box 352
Russell KS 67665

ATTN: Austin Klaus

Camp Unit #1

35 14s 14w Russell,KS

Start Date: 2014.04.23 @ 20:50:00

End Date: 2014.04.24 @ 03:31:00

Job Ticket #: 57599 DST #: 4

Trilobite Testing, Inc
PO Box 362 Hays, KS 67601
ph: 785-625-4778 fax: 785-625-5620

Printed: 2014.04.25 @ 14:00:15

John O Farmer Inc
35 14s 14w Russell,KS
Camp Unit #1
DST # 4
LKC " H - L "
2014.04.23



TRILOBITE TESTING, INC

DRILL STEM TEST REPORT

John O Farmer Inc

35 14s 14w Russell, KS

PO Box 352
Russell KS 67665

Camp Unit #1

Job Ticket: 57599

DST#: 4

ATTN: Austin Klaus

Test Start: 2014.04.23 @ 20:50:00

GENERAL INFORMATION:

Formation: **LKC "H - L"**

Deviated: No Whipstock: ft (KB)

Time Tool Opened: 22:41:45

Time Test Ended: 03:31:00

Test Type: Conventional Bottom Hole (Reset)

Tester: Jim Svaty

Unit No: 76

Interval: 3064.00 ft (KB) To 3156.00 ft (KB) (TVD)

Reference Elevations: 1752.00 ft (KB)

Total Depth: 3156.00 ft (KB) (TVD)

1744.00 ft (CF)

Hole Diameter: 7.88 inches Hole Condition: Fair

KB to GR/CF: 8.00 ft

Serial #: 8289 Outside

Press@RunDepth: 55.97 psig @ 3066.00 ft (KB)

Capacity: 8000.00 psig

Start Date: 2014.04.23

End Date:

2014.04.24

Last Calib.:

2014.04.24

Start Time: 20:50:02

End Time:

03:31:00

Time On Btm:

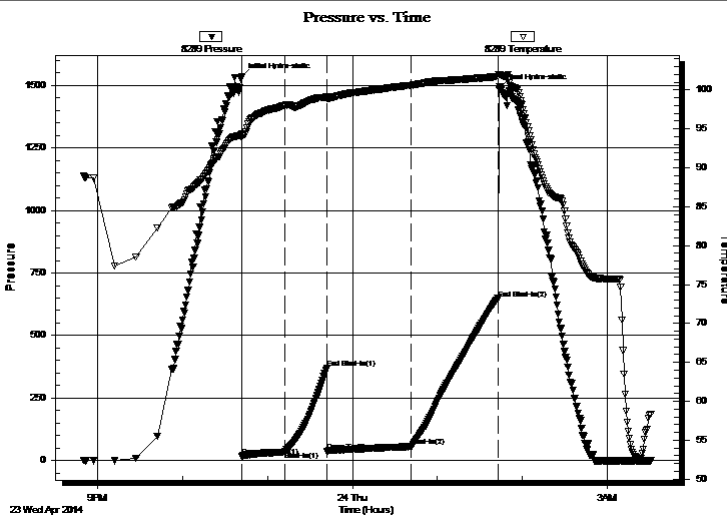
2014.04.23 @ 22:41:30

Time Off Btm:

2014.04.24 @ 01:43:15

TEST COMMENT: 30-IFP- BOB in 10 min.
30-ISIP- No Blow
60-FFP- BOB in 2 min.
60-FSIP- No Blow

PRESSURE SUMMARY



Time (Min.)	Pressure (psig)	Temp (deg F)	Annotation
0	1533.59	94.36	Initial Hydro-static
1	15.87	93.90	Open To Flow (1)
31	34.80	98.02	Shut-In(1)
61	368.11	99.09	End Shut-In(1)
61	36.39	98.89	Open To Flow (2)
120	55.97	100.62	Shut-In(2)
181	648.02	101.72	End Shut-In(2)
182	1489.04	101.96	Final Hydro-static

Recovery

Length (ft)	Description	Volume (bbl)
40.00	OCM 25%o 75% m	0.56
62.00	Gassy OCM 20%o 40%g 40% m	0.87
0.00	520 GIP	0.00

Gas Rates

	Choke (inches)	Pressure (psig)	Gas Rate (Mcf/d)

* Recovery from multiple tests



**TRILOBITE
TESTING, INC**

DRILL STEM TEST REPORT

John O Farmer Inc

35 14s 14w Russell,KS

PO Box 352
Russell KS 67665

Camp Unit #1

ATTN: Austin Klaus

Job Ticket: 57599

DST#: 4

Test Start: 2014.04.23 @ 20:50:00

GENERAL INFORMATION:

Formation: **LKC "H - L"**

Deviated: No Whipstock: ft (KB)

Time Tool Opened: 22:41:45

Time Test Ended: 03:31:00

Test Type: Conventional Bottom Hole (Reset)

Tester: Jim Svaty

Unit No: 76

Interval: 3064.00 ft (KB) To 3156.00 ft (KB) (TVD)

Total Depth: 3156.00 ft (KB) (TVD)

Hole Diameter: 7.88 inches Hole Condition: Fair

Reference Elevations: 1752.00 ft (KB)

1744.00 ft (CF)

KB to GR/CF: 8.00 ft

Serial #: 8789

Inside

Press@RunDepth: psig @ 3066.00 ft (KB)

Start Date: 2014.04.23

End Date:

2014.04.24

Start Time: 20:50:02

End Time:

03:30:45

Capacity: 8000.00 psig

Last Calib.:

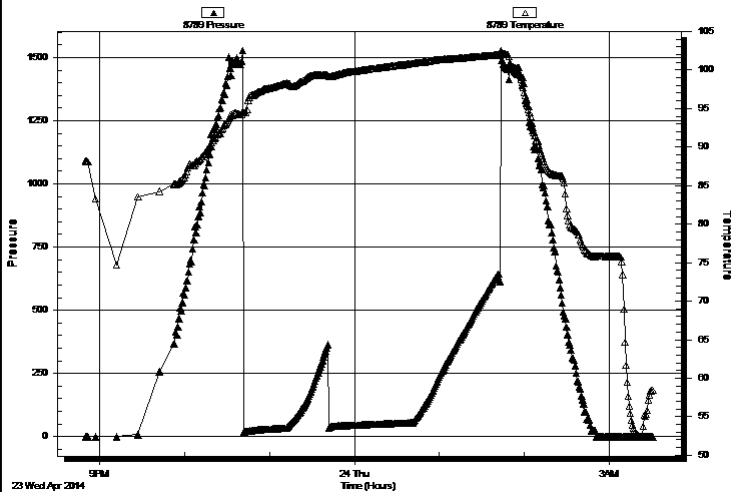
2014.04.24

Time On Btm:

Time Off Btm:

TEST COMMENT: 30-IFP- BOB in 10 min.
30-ISIP- No Blow
60-FFP- BOB in 2 min.
60-FSIP- No Blow

Pressure vs. Time



PRESSURE SUMMARY

Time (Min.)	Pressure (psig)	Temp (deg F)	Annotation

Recovery

Length (ft)	Description	Volume (bbl)
40.00	OCM 25%o 75%m	0.56
62.00	Gassy OCM 20%o 40%g 40%m	0.87
0.00	520 GIP	0.00

Gas Rates

	Choke (inches)	Pressure (psig)	Gas Rate (Mcf/d)

* Recovery from multiple tests



**TRILOBITE
TESTING, INC**

DRILL STEM TEST REPORT

TOOL DIAGRAM

John O Farmer Inc

35 14s 14w Russell, KS

PO Box 352
Russell KS 67665

Camp Unit #1

Job Ticket: 57599

DST#: 4

ATTN: Austin Klaus

Test Start: 2014.04.23 @ 20:50:00

Tool Information

Drill Pipe:	Length: 3068.00 ft	Diameter: 3.80 inches	Volume: 43.04 bbl	Tool Weight: 2500.00 lb
Heavy Wt. Pipe:	Length: 0.00 ft	Diameter: 2.75 inches	Volume: 0.00 bbl	Weight set on Packer: 25000.00 lb
Drill Collar:	Length: 0.00 ft	Diameter: 2.25 inches	Volume: 0.00 bbl	Weight to Pull Loose: 48000.00 lb
			<u>Total Volume: 43.04 bbl</u>	Tool Chased 0.00 ft
Drill Pipe Above KB:	25.00 ft			String Weight: Initial 46000.00 lb
Depth to Top Packer:	3064.00 ft			Final 47000.00 lb
Depth to Bottom Packer:	ft			
Interval between Packers:	92.00 ft			
Tool Length:	113.00 ft			
Number of Packers:	2	Diameter: 6.75 inches		

Tool Comments:

Tool Description

Tool Description	Length (ft)	Serial No.	Position	Depth (ft)	Accum. Lengths
Change Over Sub	1.00			3044.00	
Shut In Tool	5.00			3049.00	
Hydraulic tool	5.00			3054.00	
Packer	5.00			3059.00	21.00 Bottom Of Top Packer
Packer	5.00			3064.00	
Stubb	1.00			3065.00	
Perforations	1.00			3066.00	
Recorder	0.00	8789	Inside	3066.00	
Recorder	0.00	8289	Outside	3066.00	
Perforations	23.00			3089.00	
Change Over Sub	1.00			3090.00	
Blank Spacing	62.00			3152.00	
Change Over Sub	1.00			3153.00	
Bullnose	3.00			3156.00	92.00 Bottom Packers & Anchor

Total Tool Length: 113.00



**TRILOBITE
TESTING, INC**

DRILL STEM TEST REPORT

FLUID SUMMARY

John O Farmer Inc

35 14s 14w Russell, KS

PO Box 352
Russell KS 67665

Camp Unit #1

Job Ticket: 57599

DST#: 4

ATTN: Austin Klaus

Test Start: 2014.04.23 @ 20:50:00

Mud and Cushion Information

Mud Type: Gel Chem

Mud Weight: 9.00 lb/gal

Viscosity: 48.00 sec/qt

Water Loss: 8.77 in³

Resistivity: ohm.m

Salinity: 6000.00 ppm

Filter Cake: 1.00 inches

Cushion Type:

Cushion Length: ft

Cushion Volume: bbl

Gas Cushion Type:

Gas Cushion Pressure: psig

Oil API:

Water Salinity: deg API

ppm

Recovery Information

Recovery Table

Length ft	Description	Volume bbl
40.00	OCM 25%o 75%m	0.561
62.00	Gassy OCM 20%o 40%g 40%m	0.870
0.00	520 GIP	0.000

Total Length: 102.00 ft Total Volume: 1.431 bbl

Num Fluid Samples: 0

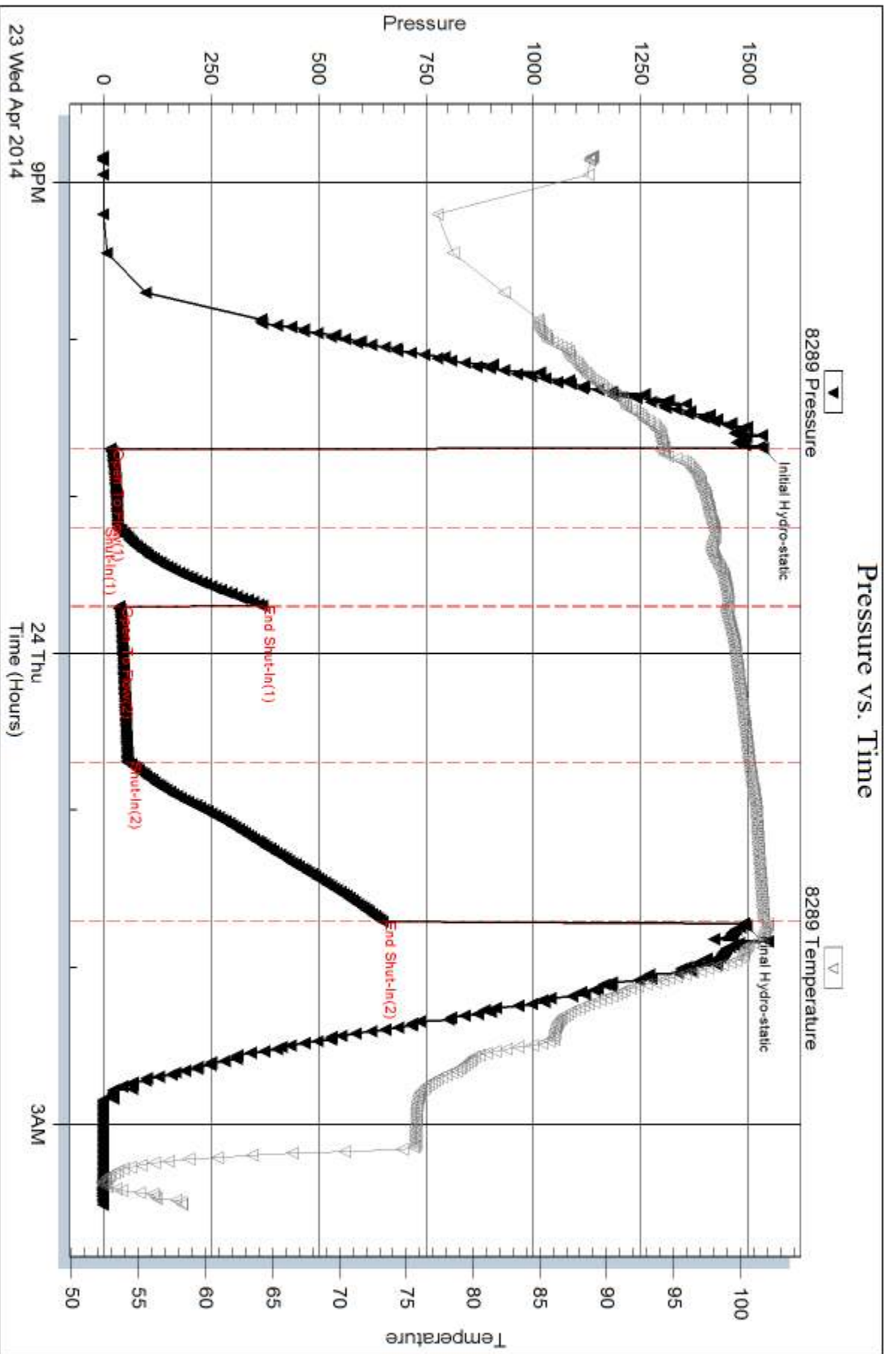
Num Gas Bombs: 0

Serial #:

Laboratory Name:

Laboratory Location:

Recovery Comments:



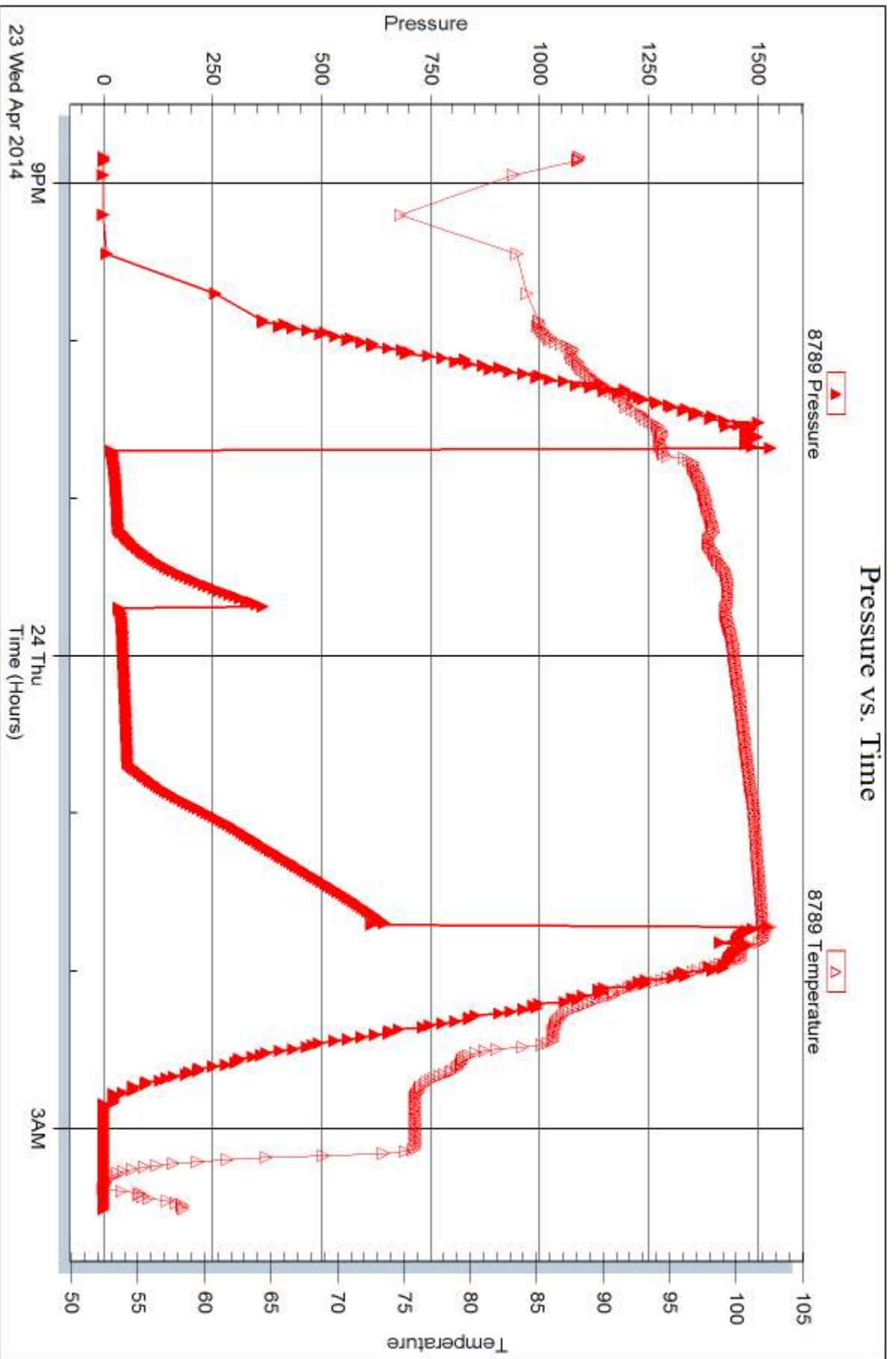
Serial #: 8789

Inside

John O Farmer Inc

Camp Unit #1

DST Test Number: 4



Trilobite Testing, Inc

Ref. No: 57599

Printed: 2014.04.25 @ 14:00:16



DRILL STEM TEST REPORT

Prepared For: **John O Farmer Inc**

PO Box 352
Russell KS 67665

ATTN: Austin Klaus

Camp Unit #1

35 14s 14w Russell,KS

Start Date: 2014.04.24 @ 16:43:00

End Date: 2014.04.24 @ 22:40:00

Job Ticket #: 57600 DST #: 5

Trilobite Testing, Inc
PO Box 362 Hays, KS 67601
ph: 785-625-4778 fax: 785-625-5620

Printed: 2014.04.25 @ 13:59:44



TRILOBITE TESTING, INC.

DRILL STEM TEST REPORT

John O Farmer Inc

35 14s 14w Russell, KS

PO Box 352
Russell KS 67665

Camp Unit #1

Job Ticket: 57600

DST#: 5

ATTN: Austin Klaus

Test Start: 2014.04.24 @ 16:43:00

GENERAL INFORMATION:

Formation: **Arbuckle**

Deviated: No Whipstock: ft (KB)

Time Tool Opened: 18:28:00

Time Test Ended: 22:40:00

Test Type: Conventional Straddle (Reset)

Tester: Jim Svaty

Unit No: 76

Interval: 3145.00 ft (KB) To 3192.00 ft (KB) (TVD)

Reference Elevations: 1752.00 ft (KB)

Total Depth: 3268.00 ft (KB) (TVD)

1744.00 ft (CF)

Hole Diameter: 7.88 inches Hole Condition: Fair

KB to GR/CF: 8.00 ft

Serial #: 8289 Outside

Press@RunDepth: 201.82 psig @ 3148.00 ft (KB)

Capacity: 8000.00 psig

Start Date: 2014.04.24

End Date: 2014.04.24

Last Calib.: 2014.04.24

Start Time: 16:43:02

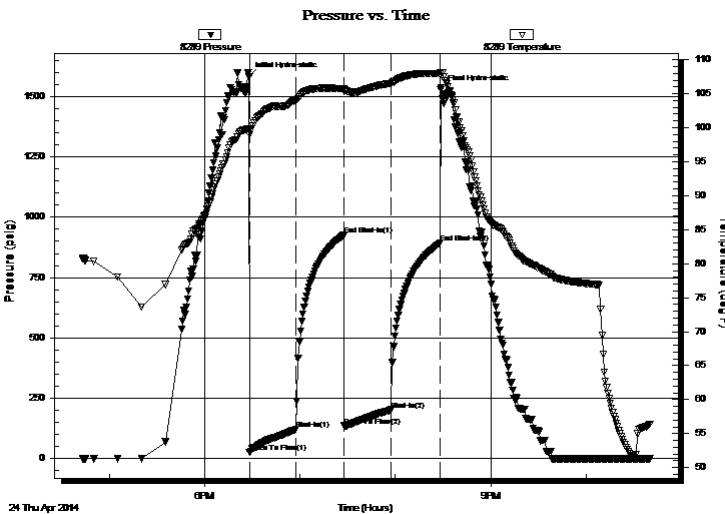
End Time: 22:40:00

Time On Btm: 2014.04.24 @ 18:27:45

Time Off Btm: 2014.04.24 @ 20:28:30

TEST COMMENT: 30-IFP- BOB in 5 1/2 min.
30-ISIP- Surface Blow in 1 1/2 min. Building to 1" in 20 min.
30-FFP- BOB in 6 min.
30-FSIP- Surface Blow in 30 sec. Building to 1 1/2" in 15 min.

PRESSURE SUMMARY



Time (Min.)	Pressure (psig)	Temp (deg F)	Annotation
0	1584.14	99.79	Initial Hydro-static
1	25.69	98.99	Open To Flow (1)
30	120.84	104.01	Shut-In(1)
60	925.69	105.77	End Shut-In(1)
60	135.71	105.40	Open To Flow (2)
90	201.82	106.53	Shut-In(2)
121	892.96	107.92	End Shut-In(2)
121	1529.90	108.11	Final Hydro-static

Recovery

Length (ft)	Description	Volume (bbl)
375.00	GMCO 10%g 15%m 75%o	5.26
107.00	CO 100%	1.50
0.00	219 GIP	0.00

* Recovery from multiple tests

Gas Rates

Choke (inches)	Pressure (psig)	Gas Rate (Mcf/d)



TRILOBITE TESTING, INC

DRILL STEM TEST REPORT

John O Farmer Inc
PO Box 352
Russell KS 67665
ATTN: Austin Klaus

35 14s 14w Russell, KS

Camp Unit #1

Job Ticket: 57600

DST#: 5

Test Start: 2014.04.24 @ 16:43:00

GENERAL INFORMATION:

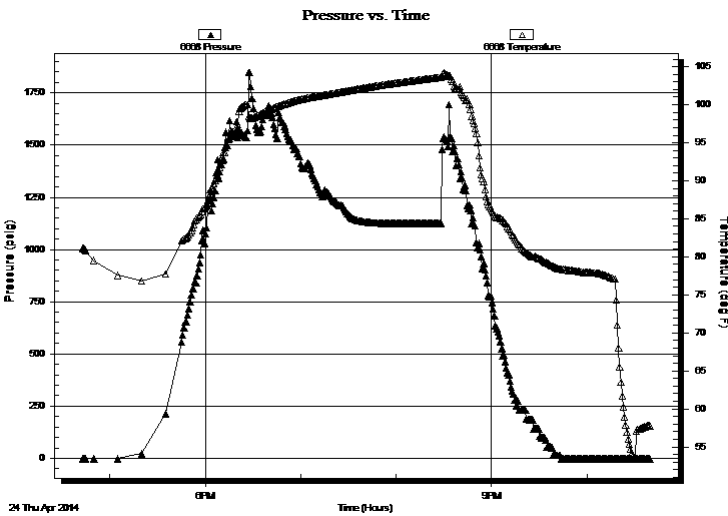
Formation: Arbuckle		Test Type: Conventional Straddle (Reset)
Deviated: No Whipstock:	ft (KB)	Tester: Jim Svaty
Time Tool Opened: 18:28:00		Unit No: 76
Time Test Ended: 22:40:00		
Interval: 3145.00 ft (KB) To 3192.00 ft (KB) (TVD)		Reference Elevations: 1752.00 ft (KB)
Total Depth: 3268.00 ft (KB) (TVD)		1744.00 ft (CF)
Hole Diameter: 7.88 inches	Hole Condition: Fair	KB to GR/CF: 8.00 ft

Serial #: 6668 Below (Straddle)

Press@RunDepth: psig @	3201.00 ft (KB)	Capacity: 8000.00 psig
Start Date: 2014.04.24	End Date: 2014.04.24	Last Calib.: 2014.04.24
Start Time: 16:43:02	End Time: 22:39:45	Time On Btm:
		Time Off Btm:

TEST COMMENT: 30-IFP- BOB in 5 1/2 min.
30-ISIP- Surface Blow in 1 1/2 min. Building to 1" in 20 min.
30-FFP- BOB in 6 min.
30-FSIP- Surface Blow in 30 sec. Building to 1 1/2" in 15 min.

PRESSURE SUMMARY



Time (Min.)	Pressure (psig)	Temp (deg F)	Annotation

Recovery

Length (ft)	Description	Volume (bbl)
375.00	GMCO 10%g 15%m 75%o	5.26
107.00	CO 100%	1.50
0.00	219 GIP	0.00

Gas Rates

	Choke (inches)	Pressure (psig)	Gas Rate (Mcf/d)

* Recovery from multiple tests



**TRILOBITE
TESTING, INC**

DRILL STEM TEST REPORT

John O Farmer Inc

35 14s 14w Russell,KS

PO Box 352
Russell KS 67665

Camp Unit #1

Job Ticket: 57600

DST#: 5

ATTN: Austin Klaus

Test Start: 2014.04.24 @ 16:43:00

GENERAL INFORMATION:

Formation: **Arbuckle**

Deviated: No Whipstock: ft (KB)

Time Tool Opened: 18:28:00

Time Test Ended: 22:40:00

Test Type: Conventional Straddle (Reset)

Tester: Jim Svaty

Unit No: 76

Interval: **3145.00 ft (KB) To 3192.00 ft (KB) (TVD)**

Total Depth: 3268.00 ft (KB) (TVD)

Hole Diameter: 7.88 inches Hole Condition: Fair

Reference Elevations: 1752.00 ft (KB)

1744.00 ft (CF)

KB to GR/CF: 8.00 ft

Serial #: 8789

Inside

Press@RunDepth: psig @ 3148.00 ft (KB)

Capacity: 8000.00 psig

Start Date: 2014.04.24

End Date: 2014.04.24

Last Calib.: 2014.04.24

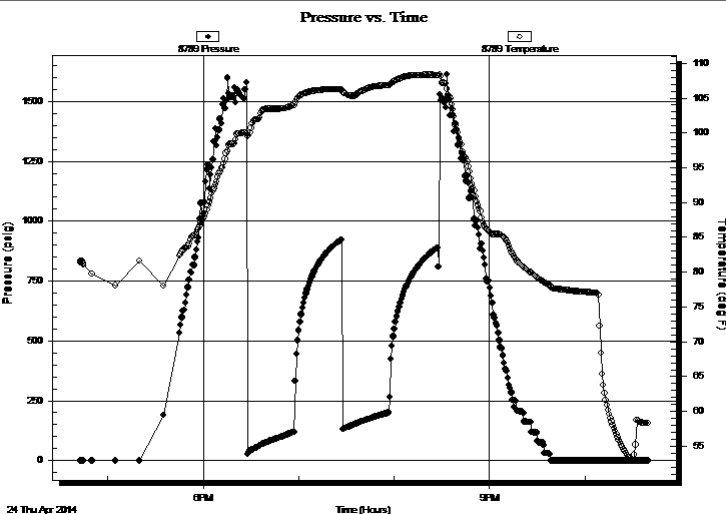
Start Time: 16:43:02

End Time: 22:39:45

Time On Btm:

Time Off Btm:

TEST COMMENT: 30-IFP- BOB in 5 1/2 min.
30-ISIP- Surface Blow in 1 1/2 min. Building to 1" in 20 min.
30-FFP- BOB in 6 min.
30-FSIP- Surface Blow in 30 sec. Building to 1 1/2" in 15 min.



PRESSURE SUMMARY

Time (Min.)	Pressure (psig)	Temp (deg F)	Annotation

Recovery

Length (ft)	Description	Volume (bbl)
375.00	GMCO 10%g 15%m 75%o	5.26
107.00	CO 100%	1.50
0.00	219 GIP	0.00

Gas Rates

	Choke (inches)	Pressure (psig)	Gas Rate (Mcf/d)

* Recovery from multiple tests



**TRILOBITE
TESTING, INC**

DRILL STEM TEST REPORT

TOOL DIAGRAM

John O Farmer Inc

35 14s 14w Russell, KS

PO Box 352
Russell KS 67665

Camp Unit #1

Job Ticket: 57600

DST#: 5

ATTN: Austin Klaus

Test Start: 2014.04.24 @ 16:43:00

Tool Information

Drill Pipe:	Length: 3128.00 ft	Diameter: 3.80 inches	Volume: 43.88 bbl	Tool Weight: 2500.00 lb
Heavy Wt. Pipe:	Length: 0.00 ft	Diameter: 2.75 inches	Volume: 0.00 bbl	Weight set on Packer: 25000.00 lb
Drill Collar:	Length: 0.00 ft	Diameter: 2.25 inches	Volume: 0.00 bbl	Weight to Pull Loose: 70000.00 lb
			<u>Total Volume: 43.88 bbl</u>	Tool Chased 0.00 ft
Drill Pipe Above KB:	4.00 ft			String Weight: Initial 46000.00 lb
Depth to Top Packer:	3145.00 ft			Final 48000.00 lb
Depth to Bottom Packer:	3192.00 ft			
Interval between Packers:	47.00 ft			
Tool Length:	144.00 ft			
Number of Packers:	2	Diameter: 6.75 inches		

Tool Comments:

Tool Description

Length (ft) Serial No. Position Depth (ft) Accum. Lengths

Change Over Sub	1.00			3125.00	
Shut In Tool	5.00			3130.00	
Hydraulic tool	5.00			3135.00	
Packer	5.00			3140.00	21.00 Bottom Of Top Packer
Packer	5.00			3145.00	
Stubb	1.00			3146.00	
Perforations	1.00			3147.00	
Change Over Sub	1.00			3148.00	
Recorder	0.00	8789	Inside	3148.00	
Recorder	0.00	8289	Outside	3148.00	
Blank Spacing	31.00			3179.00	
Change Over Sub	1.00			3180.00	
Perforations	8.00			3188.00	
Blank Off Sub	1.00			3189.00	
Blank Spacing	3.00			3192.00	47.00 Tool Interval
Packer	1.00			3193.00	
Perforations	7.00			3200.00	
Change Over Sub	1.00			3201.00	
Recorder	0.00	6668	Below	3201.00	
Blank Spacing	63.00			3264.00	
Change Over Sub	1.00			3265.00	
Bullnose	3.00			3268.00	76.00 Bottom Packers & Anchor

Total Tool Length: 144.00



**TRILOBITE
TESTING, INC**

DRILL STEM TEST REPORT

FLUID SUMMARY

John O Farmer Inc

35 14s 14w Russell, KS

PO Box 352
Russell KS 67665

Camp Unit #1

Job Ticket: 57600

DST#: 5

ATTN: Austin Klaus

Test Start: 2014.04.24 @ 16:43:00

Mud and Cushion Information

Mud Type: Gel Chem

Cushion Type:

Oil API:

30 deg API

Mud Weight: 9.00 lb/gal

Cushion Length:

ft

Water Salinity:

ppm

Viscosity: 62.00 sec/qt

Cushion Volume:

bbbl

Water Loss: 7.98 in³

Gas Cushion Type:

Resistivity: ohm.m

Gas Cushion Pressure:

psig

Salinity: 8000.00 ppm

Filter Cake: 3.00 inches

Recovery Information

Recovery Table

Length ft	Description	Volume bbl
375.00	GMCO 10%g 15%m 75%o	5.260
107.00	CO 100%	1.501
0.00	219 GIP	0.000

Total Length: 482.00 ft

Total Volume: 6.761 bbl

Num Fluid Samples: 0

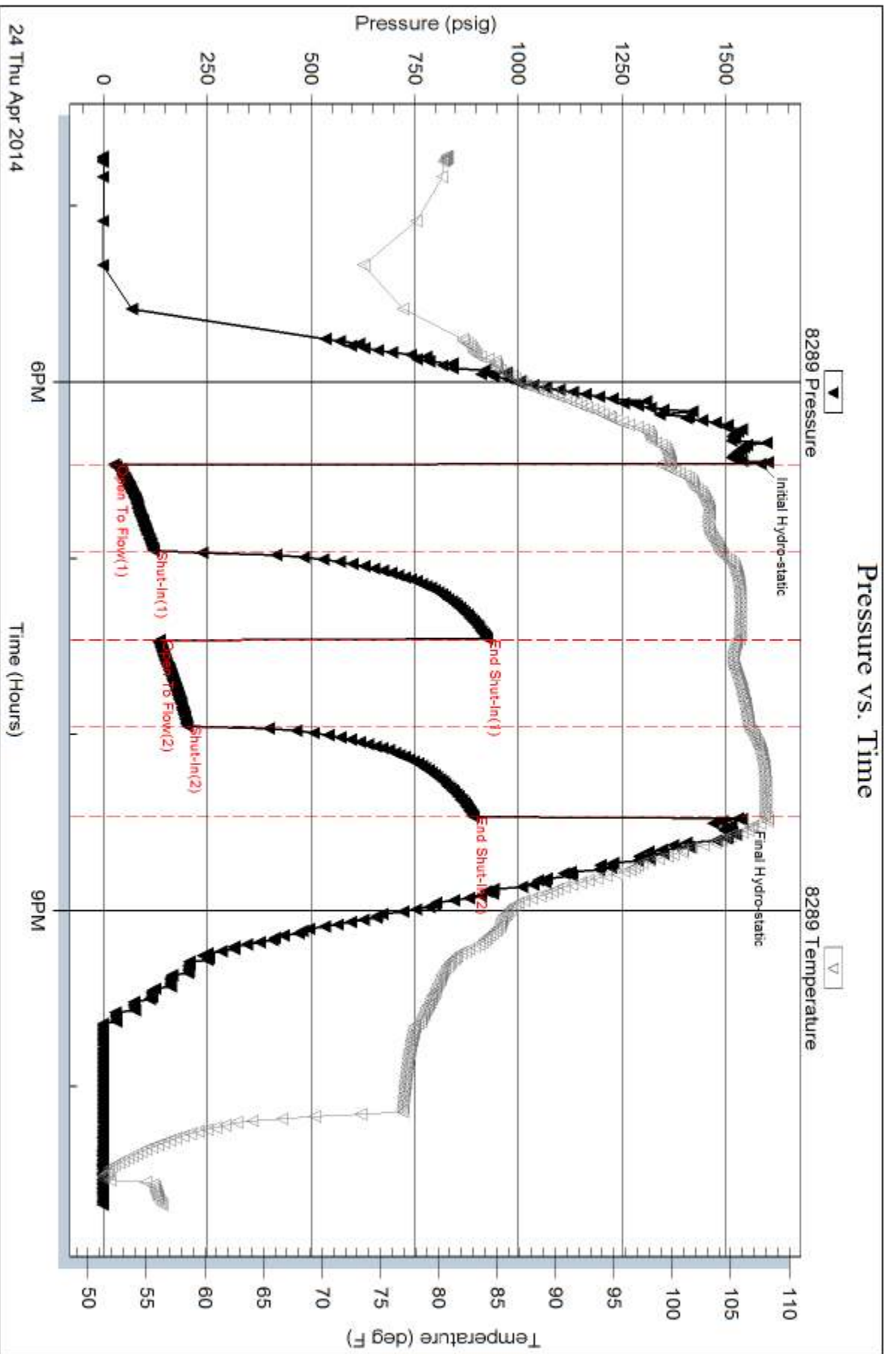
Num Gas Bombs: 0

Serial #:

Laboratory Name:

Laboratory Location:

Recovery Comments:

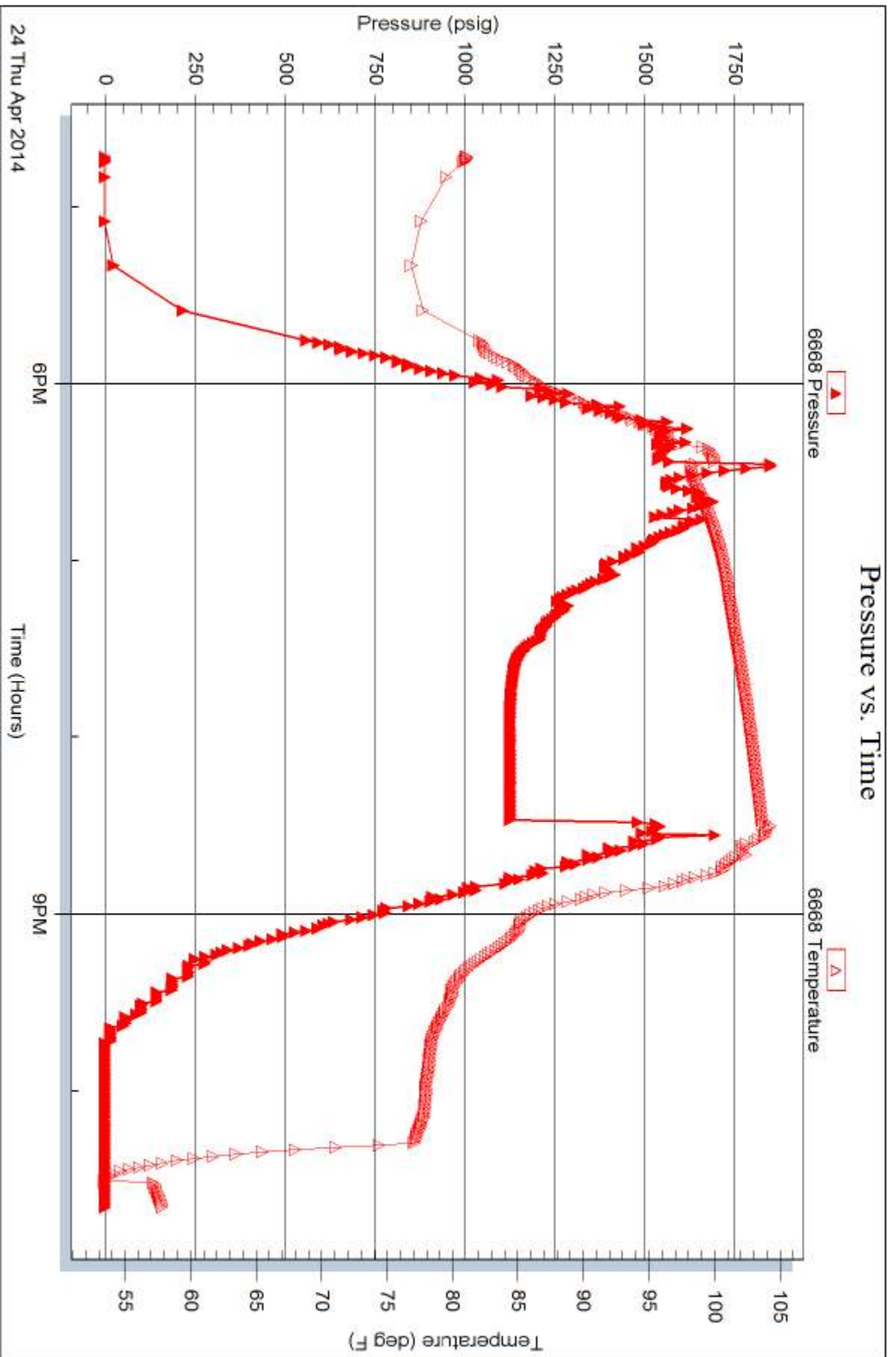


Serial #: 6668

Below (Straddled) Farmer Inc

Camp Unit #1

DST Test Number: 5



Trilobite Testing, Inc

Ref. No: 57600

Printed: 2014.04.25 @ 13:59:45

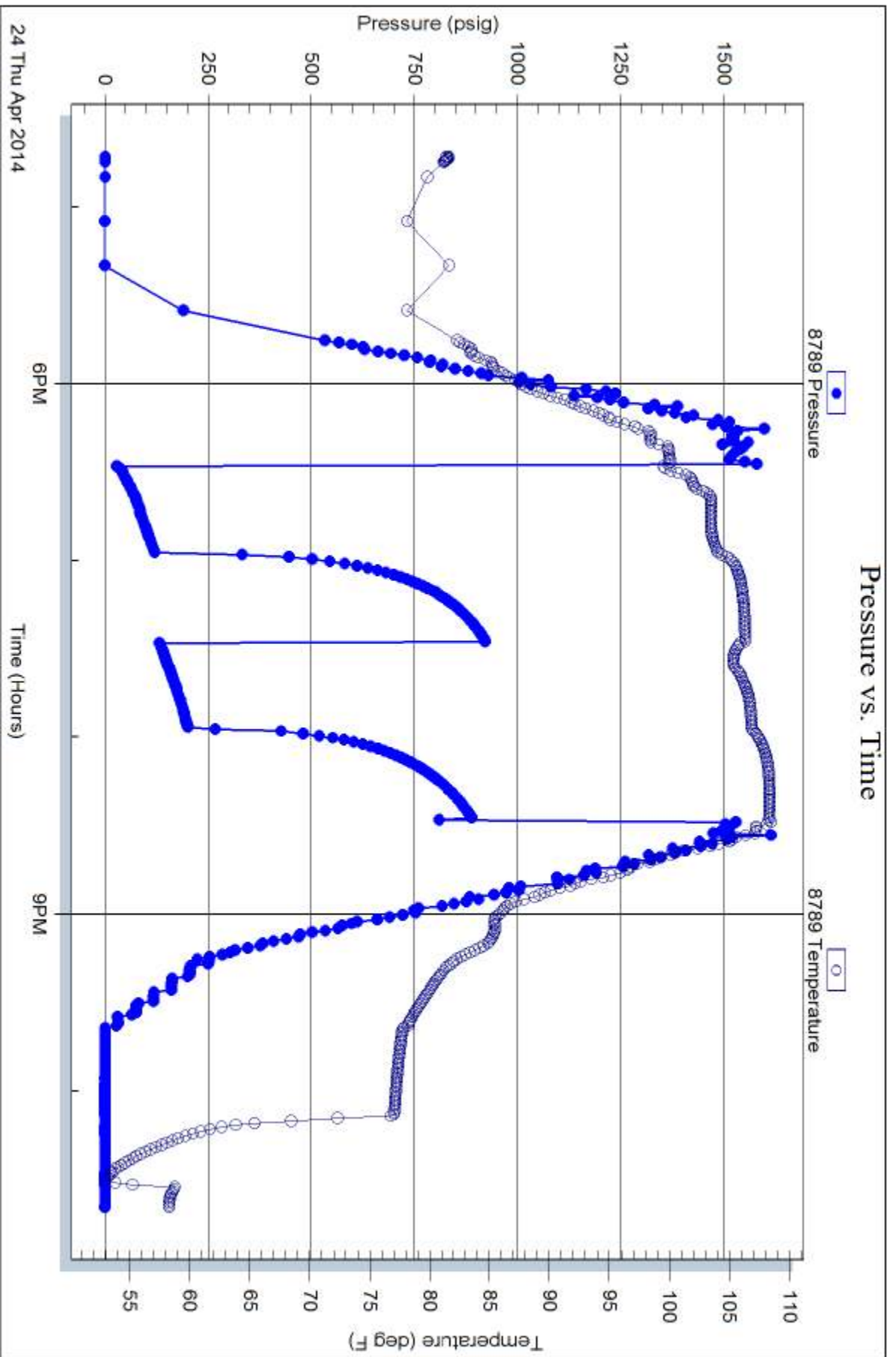
Serial #: 8789

Inside

John O Farmer Inc

Camp Unit #1

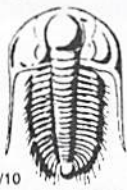
DST Test Number: 5



Tribble Testing, Inc

Ref. No: 57600

Printed: 2014.04.25 @ 13:59:45



TRILOBITE TESTING INC.

1515 Commerce Parkway • Hays, Kansas 67601

Test Ticket

NO. 57596

Well Name & No. Camp Unit #1 Test No. 1 Date 4-21-14
 Company John O. Farmer Inc. Elevation 1752 KB 1744 GL
 Address P.O. Box 352 Russell KS 67665
 Co. Rep / Geo. Austin Klaus Rig Discovery #2
 Location: Sec. 35 Twp. 14S Rge. 14W Co. Russell State KS

Interval Tested 2928-2968 Zone Tested LKC "C"
 Anchor Length 40 Drill Pipe Run 2941 Mud Wt. 8.7
 Top Packer Depth 2923 Drill Collars Run 0 Vis 49
 Bottom Packer Depth 2928 Wt. Pipe Run 0 WL 8.8
 Total Depth 2968 Chlorides 5000 ppm System LCM 1

Blow Description IFF - Packer Failed 1st Open 2nd Open 2nd Vent Surface Blow to 9 in.
ISIP - No Blow
FFP - B.O.B. in 9 in.
FSIP - No Blow

Rec	Feet of	%gas	%oil	%water	%mud
<u>40</u>	<u>OCM</u>	<u>20</u>		<u>80</u>	
Rec	Feet of	%gas	%oil	%water	%mud
Rec	Feet of <u>270 DIP</u>	%gas	%oil	%water	%mud
Rec	Feet of	%gas	%oil	%water	%mud
Rec	Feet of	%gas	%oil	%water	%mud

Rec Total 40 BHT 100 Gravity _____ API RW _____ @ _____ °F Chlorides _____ ppm

(A) Initial Hydrostatic <u>1449</u>	<input checked="" type="checkbox"/> Test <u>1150</u>	T-On Location <u>20:30</u>
(B) First Initial Flow <u>19</u>	<input type="checkbox"/> Jars _____	T-Started <u>22:14</u>
(C) First Final Flow <u>22</u>	<input type="checkbox"/> Safety Joint _____	T-Open <u>00:20</u>
(D) Initial Shut-In <u>213</u>	<input type="checkbox"/> Circ Sub _____	T-Pulled <u>03:20</u>
(E) Second Initial Flow <u>23</u>	<input type="checkbox"/> Hourly Standby _____	T-Out <u>05:00</u>
(F) Second Final Flow <u>28</u>	<input checked="" type="checkbox"/> Mileage <u>RT 59</u> 91.45	Comments _____
(G) Final Shut-In <u>573</u>	<input type="checkbox"/> Sampler _____	
(H) Final Hydrostatic <u>1448</u>	<input type="checkbox"/> Straddle _____	<input type="checkbox"/> Ruined Shale Packer _____

Initial Open 30
 Initial Shut-In 30
 Final Flow 60
 Final Shut-In 60

Shale Packer _____
 Extra Packer _____
 Extra Recorder _____
 Day Standby _____
 Accessibility _____

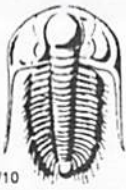
Sub Total 1241.45

Total 1241.45

MP/DST Disc't _____

Approved By _____ Our Representative [Signature]

Trilobite Testing Inc. shall not be liable for damaged of any kind of the property or personnel of the one for whom a test is made, or for any loss suffered or sustained, directly or indirectly, through the use of its equipment, or its statements or opinion concerning the results of any test, tools lost or damaged in the hole shall be paid for at cost by the party for whom the test is made.



TRILOBITE TESTING INC.

1515 Commerce Parkway • Hays, Kansas 67601

Test Ticket

NO. 57597

4/10

Well Name & No. Camp Unit #1 Test No. 2 Date 4-22-14
 Company John O Farmer Inc. Elevation 1752 KB 1744 GL
 Address P.O. Box 352 Russell KS 67665
 Co. Rep / Geo. Austin Klaus Rig Discovery #2
 Location: Sec. 35 Twp. 14^s Rge. 14^w Co. Russell State KS

Interval Tested 2989-3018 Zone Tested LKC 1 E-F
 Anchor Length 29 Drill Pipe Run 2973 Mud Wt. 8.8
 Top Packer Depth 2984 Drill Collars Run 0 Vis 52
 Bottom Packer Depth 2989 Wt. Pipe Run 0 WL 8
 Total Depth 3018 Chlorides 7000 ppm System LCM 1

Blow Description IFF - Surface Blow Building to 2 3/4 in.
ISIP - No Blow
FFP - Surface Blow Building to 3 1/4 in.
FSIP - No Blow

Rec	Feet of	%gas	%oil	%water	%mud
<u>30</u>	<u>Oil Speck Wcm</u>		<u>25</u>	<u>75</u>	
Rec	Feet of	%gas	%oil	%water	%mud
Rec	Feet of	%gas	%oil	%water	%mud
Rec	Feet of	%gas	%oil	%water	%mud
Rec	Feet of	%gas	%oil	%water	%mud

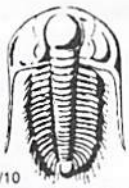
Rec Total 30 BHT 100 Gravity _____ API RW .392 @ 77 °F Chlorides 15000 ppm

(A) Initial Hydrostatic <u>1475</u>	<input checked="" type="checkbox"/> Test <u>1150</u>	T-On Location <u>12:30</u>
(B) First Initial Flow <u>12</u>	<input type="checkbox"/> Jars _____	T-Started <u>12:38</u>
(C) First Final Flow <u>20</u>	<input type="checkbox"/> Safety Joint _____	T-Open <u>14:19</u>
(D) Initial Shut-In <u>169</u>	<input type="checkbox"/> Circ Sub _____	T-Pulled <u>17:19</u>
(E) Second Initial Flow <u>18</u>	<input type="checkbox"/> Hourly Standby _____	T-Out <u>18:42</u>
(F) Second Final Flow <u>44</u>	<input checked="" type="checkbox"/> Mileage <u>91.45</u>	Comments _____
(G) Final Shut-In <u>186</u>	<input type="checkbox"/> Sampler _____	
(H) Final Hydrostatic <u>1399</u>	<input type="checkbox"/> Straddle _____	<input type="checkbox"/> Ruined Shale Packer _____

Initial Open <u>30</u>	<input type="checkbox"/> Shale Packer _____	<input type="checkbox"/> Ruined Packer _____
Initial Shut-In <u>30</u>	<input type="checkbox"/> Extra Packer _____	<input type="checkbox"/> Extra Copies _____
Final Flow <u>60</u>	<input type="checkbox"/> Extra Recorder _____	Sub Total <u>0</u>
Final Shut-In <u>60</u>	<input type="checkbox"/> Day Standby _____	Total <u>1241.45</u>
	<input type="checkbox"/> Accessibility _____	MP/DST Disc't _____
	Sub Total <u>1241.45</u>	

Approved By _____ Our Representative [Signature]

Trilobite Testing Inc. shall not be liable for damaged of any kind of the property or personnel of the one for whom a test is made, or for any loss suffered or sustained, directly or indirectly through the use of its equipment, or its statements or opinion concerning the results of any test, tools lost or damaged in the hole shall be paid for at cost by the party for whom the test is made.



TRILOBITE TESTING INC.

1515 Commerce Parkway • Hays, Kansas 67601

Test Ticket

NO. 57598

Well Name & No. Camp Unit #1 Test No. 3 Date 4-23-14
 Company John O. Farmer Inc. Elevation 1752 KB 1744 GL
 Address P.O. Box 352 Russell KS 67665
 Co. Rep / Geo. Austin Klaus Rig Discovery #2
 Location: Sec. 35 Twp. 14^s Rge. 14^w Co. Russell State KS

Interval Tested 3021-3068 Zone Tested LKC "A"
 Anchor Length 47 Drill Pipe Run 3004 Mud Wt. 9.2
 Top Packer Depth 3016 Drill Collars Run 0 Vis 48
 Bottom Packer Depth 3021 Wt. Pipe Run 0 WL 8.8
 Total Depth 3068 Chlorides 6000 ppm System LCM 1

Blow Description IFP- Surface Blow Building to 7in.
ISIP- No Blow
FFP- Surface Blow Building to 8in.
FSIP- No Blow

Rec	Feet of	%gas	%oil	%water	%mud
<u>127</u>	<u>05 mcw</u>		<u>95</u>	<u>5</u>	
Rec	Feet of	%gas	%oil	%water	%mud
Rec	Feet of	%gas	%oil	%water	%mud
Rec	Feet of	%gas	%oil	%water	%mud
Rec	Feet of	%gas	%oil	%water	%mud

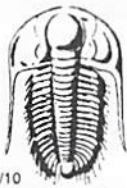
Rec Total 127 BHT 100 Gravity _____ API RW 297 @ 70 °F Chlorides 23000 ppm

(A) Initial Hydrostatic <u>1495</u>	<input checked="" type="checkbox"/> Test <u>1150</u>	T-On Location <u>4:08</u>
(B) First Initial Flow <u>20</u>	<input type="checkbox"/> Jars _____	T-Started <u>4:09</u>
(C) First Final Flow <u>43</u>	<input type="checkbox"/> Safety Joint _____	T-Open <u>5:45</u>
(D) Initial Shut-In <u>705</u>	<input type="checkbox"/> Circ Sub _____	T-Pulled <u>8:45</u>
(E) Second Initial Flow <u>46</u>	<input type="checkbox"/> Hourly Standby _____	T-Out <u>10:15</u>
(F) Second Final Flow <u>79</u>	<input checked="" type="checkbox"/> Mileage <u>91.45</u>	Comments _____
(G) Final Shut-In <u>698</u>	<input type="checkbox"/> Sampler _____	
(H) Final Hydrostatic <u>1428</u>	<input type="checkbox"/> Straddle _____	<input type="checkbox"/> Ruined Shale Packer _____

Initial Open <u>30</u>	<input type="checkbox"/> Shale Packer _____	<input type="checkbox"/> Ruined Packer _____
Initial Shut-In <u>30</u>	<input type="checkbox"/> Extra Packer _____	<input type="checkbox"/> Extra Copies _____
Final Flow <u>60</u>	<input type="checkbox"/> Extra Recorder _____	Sub Total <u>0</u>
Final Shut-In <u>60</u>	<input type="checkbox"/> Day Standby _____	Total <u>1241.45</u>
	<input type="checkbox"/> Accessibility _____	MP/DST Disc't _____
	Sub Total <u>1241.45</u>	

Approved By _____ Our Representative [Signature]

Trilobite Testing Inc. shall not be liable for damaged of any kind of the property or personnel of the one for whom a test is made, or for any loss suffered or sustained, directly or indirectly, through the use of its equipment, or its statements or opinion concerning the results of any test, tools lost or damaged in the hole shall be paid for at cost by the party for whom the test is made.



TRILOBITE TESTING INC.

1515 Commerce Parkway • Hays, Kansas 67601

Test Ticket

NO. 57599

Well Name & No. Camp Unit #1 Test No. 4 Date 4-23-14
 Company John O. Farmer Elevation 1752 KB 1744 GL
 Address P.O. Box 352 Russell KS 67665
 Co. Rep / Geo. Austin Klaus Rig Discovery #2
 Location: Sec. 35 Twp. 14S Rge. 14W Co. Russell State KS

Interval Tested 3064-3156 Zone Tested LKC "H-L"
 Anchor Length 92 Drill Pipe Run 3068 Mud Wt. 9.2
 Top Packer Depth 3059 Drill Collars Run 0 Vis 48
 Bottom Packer Depth 3064 Wt. Pipe Run 0 WL 8.8
 Total Depth 3156 Chlorides 6000 ppm System LCM 1

Blow Description IFP- BOB in 10min.
ISIP- No Blow.
FFP- BOB in 2min.
FSIP- No Blow

Rec	Feet of	%gas	%oil	%water	%mud
<u>40</u>	<u>OCM</u>	<u>25</u>		<u>75</u>	
<u>62</u>	<u>Sassey OCM</u>	<u>40</u>	<u>20</u>	<u>40</u>	
	<u>520 AIP</u>				

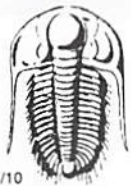
Rec Total 102 BHT 102 Gravity _____ API RW _____ @ _____ °F Chlorides _____ ppm

(A) Initial Hydrostatic <u>1533</u>	<input checked="" type="checkbox"/> Test <u>1150</u>	T-On Location <u>20:30</u>
(B) First Initial Flow <u>15</u>	<input type="checkbox"/> Jars _____	T-Started <u>20:50</u>
(C) First Final Flow <u>34</u>	<input type="checkbox"/> Safety Joint _____	T-Open <u>22:42</u>
(D) Initial Shut-In <u>368</u>	<input type="checkbox"/> Circ Sub _____	T-Pulled <u>01:42</u>
(E) Second Initial Flow <u>36</u>	<input type="checkbox"/> Hourly Standby _____	T-Out <u>03:31</u>
(F) Second Final Flow <u>55</u>	<input checked="" type="checkbox"/> Mileage <u>91.45</u>	Comments _____
(G) Final Shut-In <u>648</u>	<input type="checkbox"/> Sampler _____	
(H) Final Hydrostatic <u>1489</u>	<input type="checkbox"/> Straddle _____	<input type="checkbox"/> Ruined Shale Packer _____

Initial Open <u>30</u>	<input type="checkbox"/> Shale Packer _____	<input type="checkbox"/> Ruined Packer _____
Initial Shut-In <u>30</u>	<input type="checkbox"/> Extra Packer _____	<input type="checkbox"/> Extra Copies _____
Final Flow <u>60</u>	<input type="checkbox"/> Extra Recorder _____	Sub Total <u>0</u>
Final Shut-In <u>60</u>	<input type="checkbox"/> Day Standby _____	Total <u>1241.45</u>
	<input type="checkbox"/> Accessibility _____	MP/DST Disc't _____
	Sub Total <u>1241.45</u>	

Approved By _____ Our Representative [Signature]

Trilobite Testing Inc. shall not be liable for damaged of any kind of the property or personnel of the one for whom a test is made, or for any loss suffered or sustained, directly or indirectly, through the use of its equipment, or its statements or opinion concerning the results of any test, tools lost or damaged in the hole shall be paid for at cost by the party for whom the test is made.



TRILOBITE TESTING INC.

1515 Commerce Parkway • Hays, Kansas 67601

Test Ticket

NO. 57600

Well Name & No. Camp Unit #1 Test No. 5 Date 4-24-14
 Company John O. Farmer Inc. Elevation 1752 KB 1744 GL
 Address P.O. Box 352 Russell KS 67665
 Co. Rep / Geo. Austin Klaus Rig Discovery #2
 Location: Sec. 35 Twp. 14^s Rge. 14^w Co. Russell State KS

Interval Tested 3145-3192 Zone Tested Arbuckle
 Anchor Length 47 (76TP) Drill Pipe Run 3128 Mud Wt. 9.1
 Top Packer Depth 3145 Drill Collars Run 0 Vis 62
 Bottom Packer Depth 3192 Wt. Pipe Run 0 WL 8
 Total Depth 3268 LogTD Chlorides 80250 ppm System LCM 3

Blow Description IFP- BOB in 5 1/2 min.
ISIP- Surface Blow in 1 1/2 min Building to 1 in. in 20 min.
FFP- BOB in 6 min.
FSIP- Surface Blow in 30 sec. Building to 1 1/2 in. in 15 min.

Rec	Feet of	%gas	%oil	%water	%mud
<u>375</u>	<u>AmCO</u>	<u>10</u>	<u>75</u>	<u>15</u>	
<u>107</u>	<u>CO</u>		<u>100</u>		
	<u>219</u> <u>WIP</u>				

Rec Total 482 BHT 108 Gravity 30 API RW _____ @ _____ °F Chlorides _____ ppm

(A) Initial Hydrostatic 1584 Test 1150 T-On Location 15:50
 (B) First Initial Flow 25 Jars _____ T-Started 16:43
 (C) First Final Flow 120 Safety Joint _____ T-Open 18:28
 (D) Initial Shut-In 925 Circ Sub _____ T-Pulled 20:28
 (E) Second Initial Flow 135 Hourly Standby _____ T-Out 22:40
 (F) Second Final Flow 201 Mileage 91.45 Comments _____
 (G) Final Shut-In 892 Sampler _____
 (H) Final Hydrostatic 1529 Straddle 600 Ruined Shale Packer _____

Initial Open 30 Shale Packer _____ Ruined Packer _____
 Initial Shut-In 30 Extra Packer _____ Extra Copies _____
 Final Flow 30 Extra Recorder _____ Sub Total 0
 Final Shut-In 30 Day Standby _____ Total 1841.45
 Accessibility _____ MP/DST Disc't _____
 Sub Total 1841.45

Approved By _____ Our Representative [Signature]

Trilobite Testing Inc. shall not be liable for damaged of any kind of the property or personnel of the one for whom a test is made, or for any loss suffered or sustained directly or indirectly, through the use of its equipment, or its statements or opinion concerning the results of any test, tools lost or damaged in the hole shall be paid for at cost by the party for whom the test is made.