



**TRILOBITE  
TESTING, INC.**

# DRILL STEM TEST REPORT

Samuel Gary Jr. & Associates

**28-17s-12w Barton KS**

1515 Wynkoop STE 700  
Denver CO, 80202

**Hoffman Ranch 1-28**

ATTN: Dan Pritchard

Job Ticket: 54041

**DST#: 2**

Test Start: 2014.05.09 @ 23:14:00

## GENERAL INFORMATION:

Formation: **LKC "A"**  
 Deviated: No Whipstock: ft (KB)  
 Time Tool Opened: 02:39:45  
 Time Test Ended: 08:17:15  
 Interval: **3171.00 ft (KB) To 3203.00 ft (KB) (TVD)**  
 Total Depth: 3203.00 ft (KB) (TVD)  
 Hole Diameter: 7.88 inches Hole Condition: Fair  
 Test Type: Conventional Bottom Hole (Reset)  
 Tester: Cody Bloedorn  
 Unit No: 73  
 Reference Elevations: 1902.00 ft (KB)  
 1892.00 ft (CF)  
 KB to GR/CF: 10.00 ft

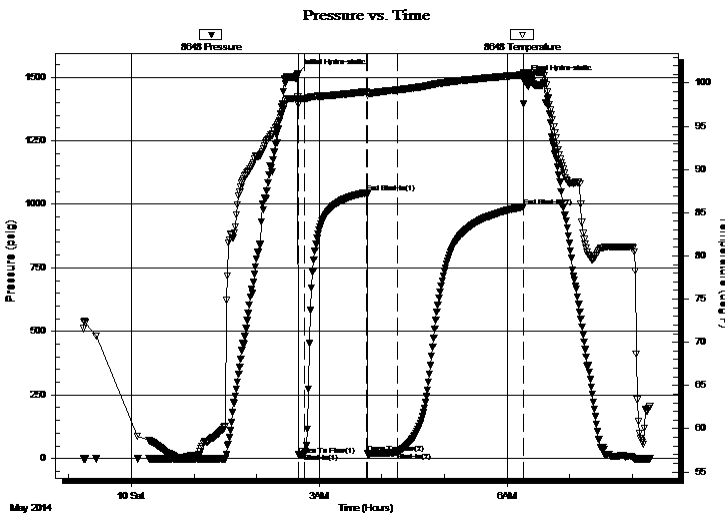
## Serial #: 8648

Inside

Press @ Run Depth: 25.82 psig @ 3175.00 ft (KB) Capacity: 8000.00 psig  
 Start Date: 2014.05.09 End Date: 2014.05.10 Last Calib.: 2014.05.10  
 Start Time: 23:14:05 End Time: 08:17:15 Time On Btm: 2014.05.10 @ 02:39:30  
 Time Off Btm: 2014.05.10 @ 06:16:15

TEST COMMENT: 05 - IF- 1/2" blow  
 60 - IS- No return  
 30 - FF- No blow  
 120 - FS- No return

## PRESSURE SUMMARY



Time (Min.)	Pressure (psig)	Temp (deg F)	Annotation
0	1514.30	98.38	Initial Hydro-static
1	14.57	97.56	Open To Flow (1)
7	18.86	98.18	Shut-In(1)
66	1046.27	99.00	End Shut-In(1)
67	19.17	98.61	Open To Flow (2)
96	25.82	99.20	Shut-In(2)
216	990.58	100.94	End Shut-In(2)
217	1489.12	101.23	Final Hydro-static

## Recovery

Length (ft)	Description	Volume (bbl)
11.00	Mud, 100%M	0.15

\* Recovery from multiple tests

## Gas Rates

Choke (inches)	Pressure (psig)	Gas Rate (Mcf/d)







**TRILOBITE**  
**TESTING, INC.**

# DRILL STEM TEST REPORT

**FLUID SUMMARY**

Samuel Gary Jr. & Associates

**28-17s-12w Barton KS**

1515 Wynkoop STE 700  
Denver CO, 80202

**Hoffman Ranch 1-28**

Job Ticket: 54041

**DST#: 2**

ATTN: Dan Pritchard

Test Start: 2014.05.09 @ 23:14:00

## Mud and Cushion Information

Mud Type: Gel Chem

Cushion Type:

Oil API:

deg API

Mud Weight: 9.00 lb/gal

Cushion Length:

ft

Water Salinity:

ppm

Viscosity: 50.00 sec/qt

Cushion Volume:

bbbl

Water Loss: 8.79 in<sup>3</sup>

Gas Cushion Type:

Resistivity: ohm.m

Gas Cushion Pressure:

psig

Salinity: 6200.00 ppm

Filter Cake: inches

## Recovery Information

Recovery Table

Length ft	Description	Volume bbbl
11.00	Mud, 100%M	0.154

Total Length: 11.00 ft      Total Volume: 0.154 bbl

Num Fluid Samples: 0

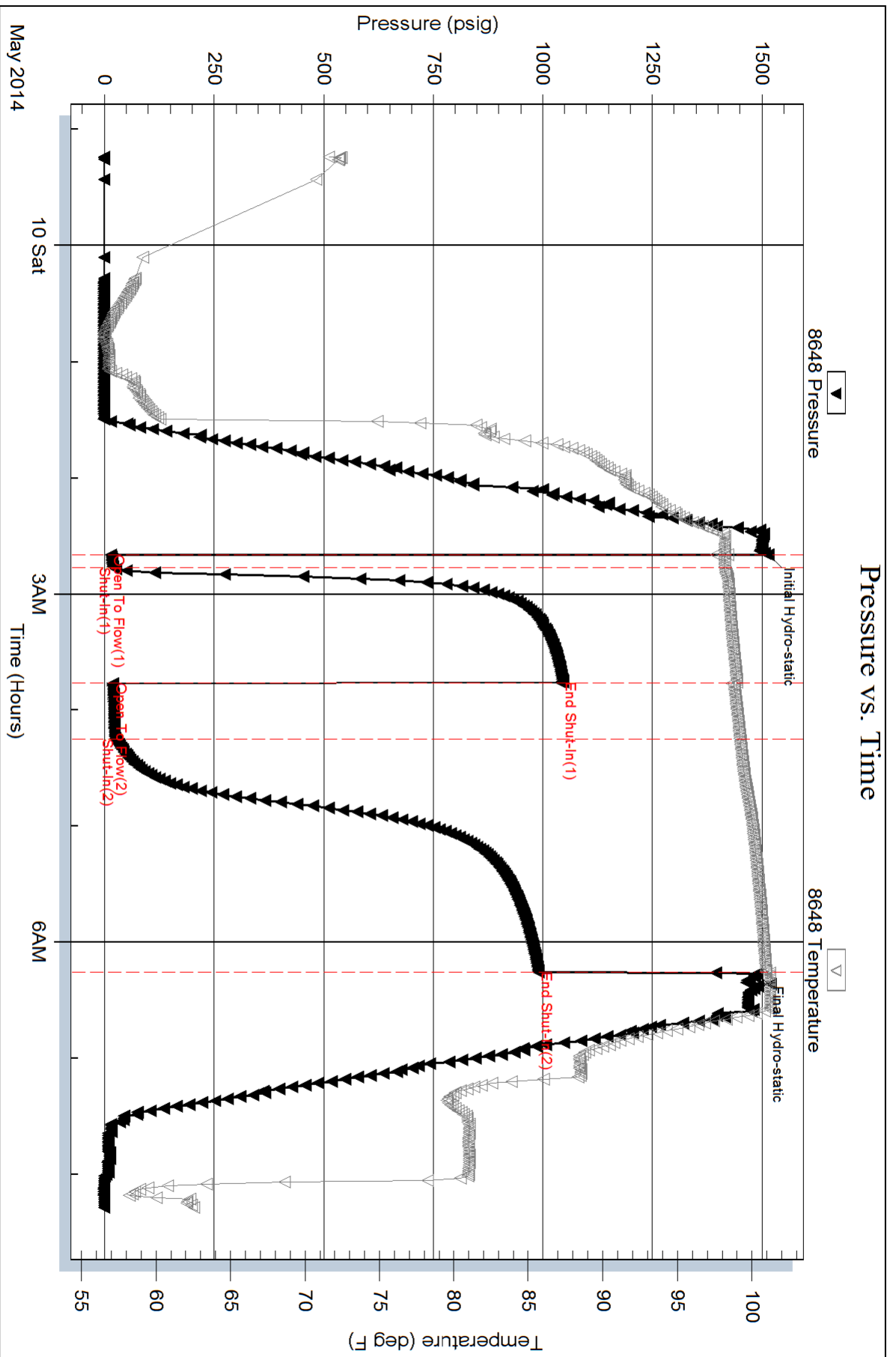
Num Gas Bombs: 0

Serial #:

Laboratory Name:

Laboratory Location:

Recovery Comments: Sampler: 1800 ML Mud, PSI: 110





Serial #: 8958

Fluid

Samuel Gary Jr. & Associates

Hoffman Ranch 1-28

DST Test Number: 2

