



**TRILOBITE TESTING, INC.**

# DRILL STEM TEST REPORT

Samuel Gary Jr. & Associates

**28-17s-12w Barton KS**

1515 Wynkoop STE 700  
Denver CO, 80202

**Hoffman Ranches 1-28**

ATTN: Dan Pritchard

Job Ticket: 54042

**DST#: 3**

Test Start: 2014.05.10 @ 19:16:00

## GENERAL INFORMATION:

Formation: **LKC "D-F"**

Deviated: No Whipstock: ft (KB)

Time Tool Opened: 21:09:45

Time Test Ended: 04:45:00

Test Type: Conventional Straddle (Reset)

Tester: Cody Bloedorn

Unit No: 73

**Interval: 3210.00 ft (KB) To 3253.00 ft (KB) (TVD)**

Reference Elevations: 1902.00 ft (KB)

Total Depth: 3253.00 ft (KB) (TVD)

1892.00 ft (CF)

Hole Diameter: 7.88 inches Hole Condition: Fair

KB to GR/CF: 10.00 ft

**Serial #: 8648**

**Inside**

Press @ Run Depth: 587.68 psig @ 3248.00 ft (KB)

Capacity: 8000.00 psig

Start Date: 2014.05.10

End Date:

2014.05.11

Last Calib.:

2014.05.11

Start Time:

19:16:05

End Time:

04:45:00

Time On Btm:

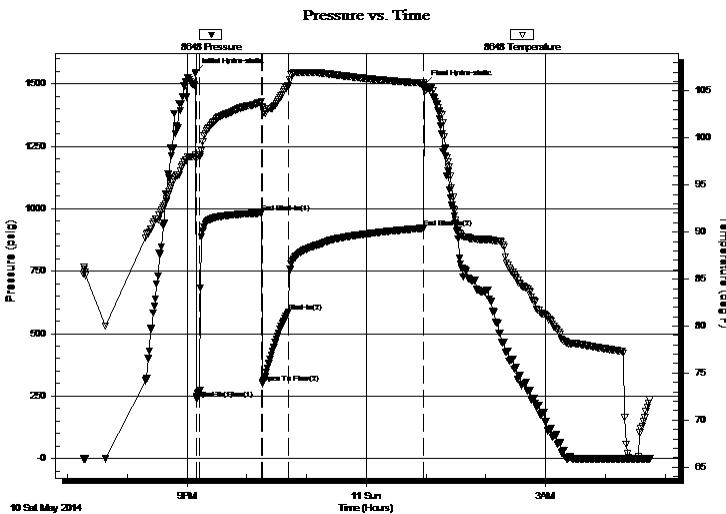
2014.05.10 @ 21:08:30

Time Off Btm:

2014.05.11 @ 00:58:15

**TEST COMMENT:** 05 - IF- B.O.B. instantly  
60 - IS- 5" in 11 minutes, died back to a 2 1/2" blow  
30 - FF- B.O.B. instantly, G.T.S. on bleed off  
120 - FS- B.O.B. in 30 seconds

## PRESSURE SUMMARY



Time (Min.)	Pressure (psig)	Temp (deg F)	Annotation
0	1546.29	98.28	Initial Hydro-static
2	239.91	98.01	Open To Flow (1)
5	272.18	98.05	Shut-In(1)
67	982.14	103.88	End Shut-In(1)
67	300.40	103.35	Open To Flow (2)
94	587.68	105.54	Shut-In(2)
229	922.20	105.84	End Shut-In(2)
230	1497.91	105.15	Final Hydro-static

## Recovery

Length (ft)	Description	Volume (bbl)
186.00	GSOCMW, 5%G, 5%O, 5%M, 85%W	2.61
868.00	GOCW, 20%W, 30%G, 50%O	12.18
186.00	GHOCM, 20%G, 40%O, 40%M	2.61
0.00	G.T.S. @ bleed off	0.00

\* Recovery from multiple tests

## Gas Rates

	Choke (inches)	Pressure (psig)	Gas Rate (Mcf/d)





**TRILOBITE  
TESTING, INC.**

# DRILL STEM TEST REPORT

**FLUID SUMMARY**

Samuel Gary Jr. & Associates

**28-17s-12w Barton KS**

1515 Wynkoop STE 700  
Denver CO, 80202

**Hoffman Ranches 1-28**

Job Ticket: 54042

**DST#: 3**

ATTN: Dan Pritchard

Test Start: 2014.05.10 @ 19:16:00

## Mud and Cushion Information

Mud Type: Gel Chem

Cushion Type:

Oil API:

32 deg API

Mud Weight: 9.00 lb/gal

Cushion Length:

ft

Water Salinity:

24000 ppm

Viscosity: 52.00 sec/qt

Cushion Volume:

bbbl

Water Loss: 9.59 in<sup>3</sup>

Gas Cushion Type:

Resistivity: ohm.m

Gas Cushion Pressure:

psig

Salinity: 8500.00 ppm

Filter Cake: inches

## Recovery Information

Recovery Table

Length ft	Description	Volume bbbl
186.00	GSOCMW, 5%G, 5%O, 5%M, 85%W	2.609
868.00	GOCW, 20%W, 30%G, 50%O	12.176
186.00	GHOCM, 20%G, 40%O, 40%M	2.609
0.00	G.T.S. @ bleed off	0.000

Total Length: 1240.00 ft      Total Volume: 17.394 bbl

Num Fluid Samples: 0

Num Gas Bombs: 0

Serial #:

Laboratory Name:

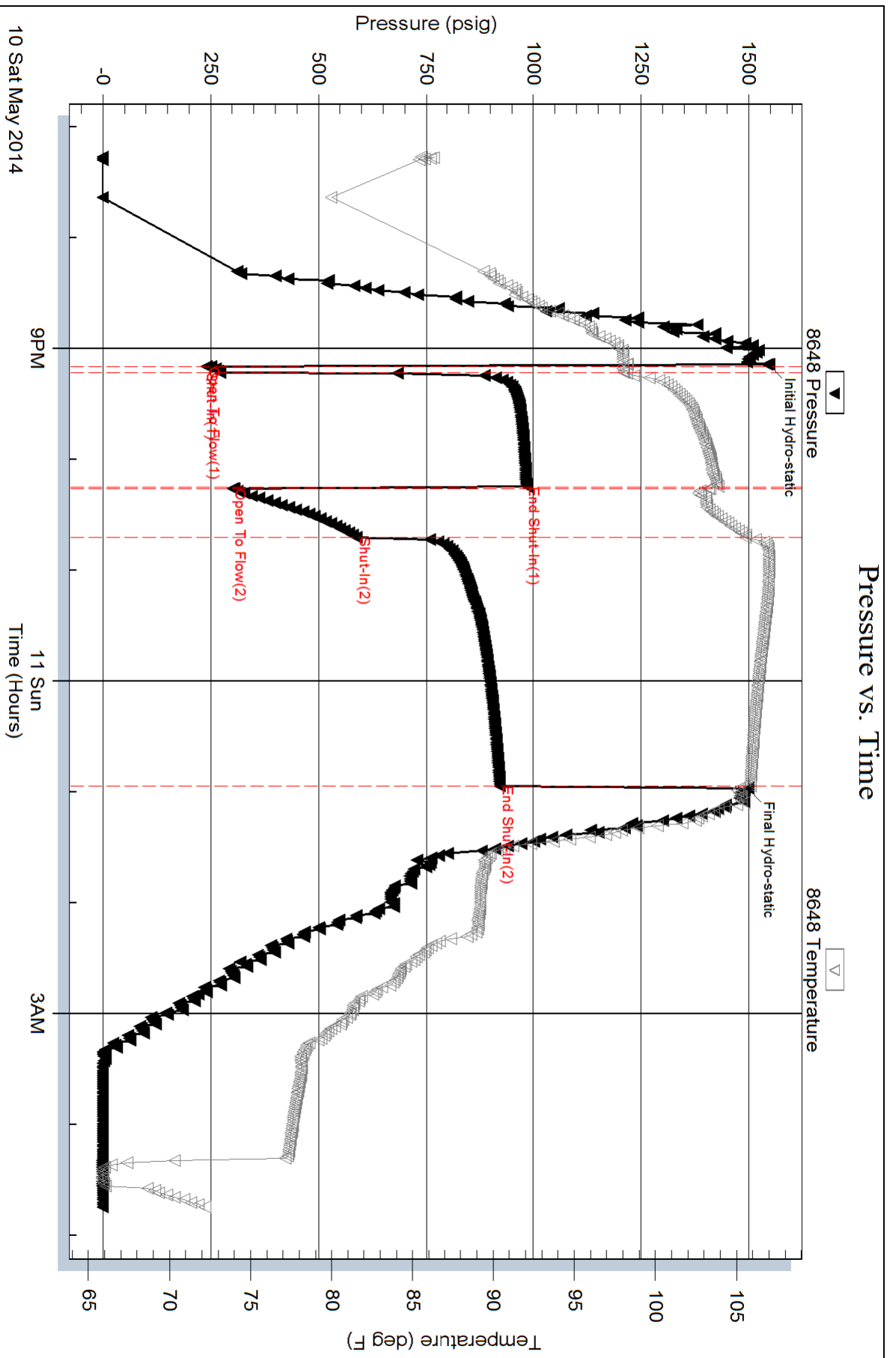
Laboratory Location:

Recovery Comments: Sampler: 300ML Water, 1700 ML O , PSI: 510

Gravity: 33 @ 70 Degrees = 32

Salinity: .39 @ 50 Degrees = 24,000

# Pressure vs. Time



Serial #: 8958

Fluid

Samuel Gary Jr. & Associates

Hoffman Ranches 1-28

DST Test Number: 3

