



TRILOBITE TESTING, INC

DRILL STEM TEST REPORT

Herman Loeb LLC
 P. O. Box 838
 Lawrenceville IL 62439
 ATTN: Jon Christensen

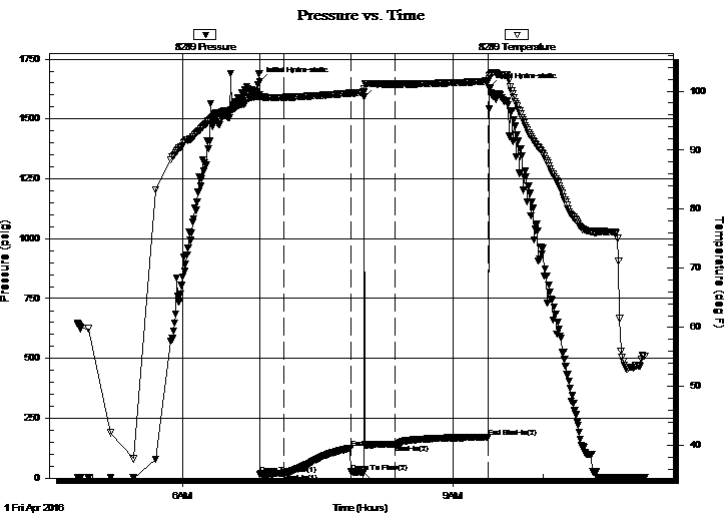
21 13s 17w Ellis Co.
Moeder 1-21
 Job Ticket: 64768 **DST#: 1**
 Test Start: 2016.04.01 @ 04:50:00

GENERAL INFORMATION:

Formation: **LKC " E "**
 Deviated: No Whipstock: ft (KB)
 Test Type: Conventional Bottom Hole (Initial)
 Time Tool Opened: 06:51:30 Tester: Jim Svaty
 Time Test Ended: 11:07:00 Unit No: 76
 Interval: **3368.00 ft (KB) To 3388.00 ft (KB) (TVD)** Reference Elevations: 2013.00 ft (KB)
 Total Depth: 3388.00 ft (KB) (TVD) 2002.00 ft (CF)
 Hole Diameter: 7.88 inches Hole Condition: Fair KB to GR/CF: 11.00 ft

Serial #: 8289 Outside
 Press@RunDepth: 24.30 psig @ 3370.00 ft (KB) Capacity: 8000.00 psig
 Start Date: 2016.04.01 End Date: 2016.04.01 Last Calib.: 2016.04.01
 Start Time: 04:50:02 End Time: 11:07:15 Time On Btm: 2016.04.01 @ 06:51:15
 Time Off Btm: 2016.04.01 @ 09:24:00

TEST COMMENT: 15-IFP- Surface Blow Thru-out
 45-ISIP- No Blow
 30-FFP- No Blow Flushed in 10 min. Weak Surface Blow Died in 2 min.
 60-FSIP- No Blow



PRESSURE SUMMARY

Time (Min.)	Pressure (psig)	Temp (deg F)	Annotation
0	1656.24	99.39	Initial Hydro-static
1	16.47	98.94	Open To Flow (1)
16	20.64	98.95	Shut-In(1)
61	126.05	99.68	End Shut-In(1)
61	25.71	99.63	Open To Flow (2)
69	24.30	99.81	Shut-In at 8 min
70	1590.87	100.48	--Flushed tool
90	140.34	101.27	Shut-In(2)
152	171.18	101.71	End Shut-In(2)
153	1631.64	102.59	Final Hydro-static

Recovery

Length (ft)	Description	Volume (bbl)
230.00	Mud 100%	1.25

Gas Rates

Choke (inches)	Pressure (psig)	Gas Rate (Mcf/d)



**TRILOBITE
TESTING, INC**

DRILL STEM TEST REPORT

FLUID SUMMARY

Herman Loeb LLC

21 13s 17w Ellis Co.

P. O. Box 838
Lawrenceville IL 62439

Moeder 1-21

Job Ticket: 64768

DST#: 1

ATTN: Jon Christensen

Test Start: 2016.04.01 @ 04:50:00

Mud and Cushion Information

Mud Type: Gel Chem

Cushion Type:

Oil API:

deg API

Mud Weight: 9.00 lb/gal

Cushion Length:

ft

Water Salinity:

ppm

Viscosity: 63.00 sec/qt

Cushion Volume:

bbbl

Water Loss: 7.19 in³

Gas Cushion Type:

Resistivity: ohm.m

Gas Cushion Pressure:

psig

Salinity: 4000.00 ppm

Filter Cake: 3.00 inches

Recovery Information

Recovery Table

Length ft	Description	Volume bbl
230.00	Mud 100%	1.250

Total Length: 230.00 ft Total Volume: 1.250 bbl

Num Fluid Samples: 0

Num Gas Bombs: 0

Serial #:

Laboratory Name:

Laboratory Location:

Recovery Comments: Picked up mud when flushing tool

Pressure vs. Time

