



**TRILOBITE
TESTING, INC**

DRILL STEM TEST REPORT

Black Tea Oil, LLC.

28-13s-34w Logan co.

1011 Centennial Blvd. STE B
Hays, KS 67601

Pahls B # 1

Job Ticket: 59598

DST#: 2

ATTN: Kevin Bailey

Test Start: 2014.08.25 @ 07:06:00

GENERAL INFORMATION:

Formation: **Kansas City**

Deviated: No Whipstock: ft (KB)

Time Tool Opened: 09:10:15

Time Test Ended: 13:26:15

Test Type: Conventional Bottom Hole (Reset)

Tester: Samuel Esparza

Unit No: 72

Interval: 3924.00 ft (KB) To 3961.00 ft (KB) (TVD)

Reference Elevations: 2847.00 ft (KB)

Total Depth: 3961.00 ft (KB) (TVD)

2838.00 ft (CF)

Hole Diameter: 7.88 inches Hole Condition: Good

KB to GR/CF: 9.00 ft

Serial #: 8845 Outside

Press@RunDepth: 390.71 psig @ 3925.00 ft (KB)

Capacity: 8000.00 psig

Start Date: 2014.08.25

End Date:

2014.08.25

Last Calib.:

2014.08.25

Start Time: 07:06:05

End Time:

13:26:14

Time On Btm:

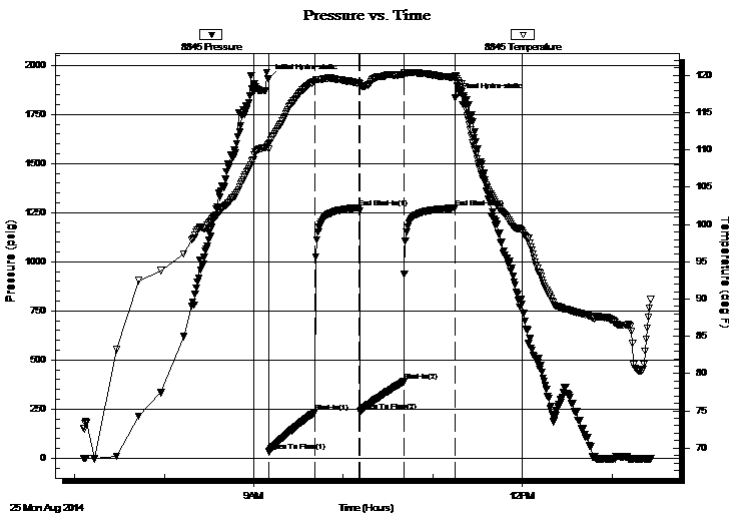
2014.08.25 @ 09:10:00

Time Off Btm:

2014.08.25 @ 11:15:15

TEST COMMENT: IF: BOB @ 7 min.
IS: No Return.
FF: BOB @ 8 min.
FS: No Return.

PRESSURE SUMMARY



Time (Min.)	Pressure (psig)	Temp (deg F)	Annotation
0	1934.00	110.79	Initial Hydro-static
1	34.23	110.09	Open To Flow (1)
31	232.69	119.17	Shut-In(1)
61	1276.11	118.95	End Shut-In(1)
62	239.66	118.59	Open To Flow (2)
91	390.71	120.11	Shut-In(2)
125	1274.34	119.70	End Shut-In(2)
126	1837.06	119.99	Final Hydro-static

Recovery

Length (ft)	Description	Volume (bbl)
565.00	MW 10m 90w	7.42
380.00	OMCW 5o 30m 65w	5.33
1.00	Clean Oil 100o	0.01

* Recovery from multiple tests

Gas Rates

	Choke (inches)	Pressure (psig)	Gas Rate (Mcf/d)



**TRILOBITE
TESTING, INC**

DRILL STEM TEST REPORT

FLUID SUMMARY

Black Tea Oil, LLC.

28-13s-34w Logan co.

1011 Centennial Blvd. STE B
Hays, KS 67601

Pahls B # 1

Job Ticket: 59598

DST#: 2

ATTN: Kevin Bailey

Test Start: 2014.08.25 @ 07:06:00

Mud and Cushion Information

Mud Type: Gel Chem

Cushion Type:

Oil API:

deg API

Mud Weight: 9.00 lb/gal

Cushion Length:

ft

Water Salinity:

40000 ppm

Viscosity: 47.00 sec/qt

Cushion Volume:

bbbl

Water Loss: 7.98 in³

Gas Cushion Type:

Resistivity: 0.00 ohm.m

Gas Cushion Pressure:

psig

Salinity: 5000.00 ppm

Filter Cake: 1.00 inches

Recovery Information

Recovery Table

Length ft	Description	Volume bbl
565.00	MW 10m 90w	7.415
380.00	OMCW 5o 30m 65w	5.330
1.00	Clean Oil 100o	0.014

Total Length: 946.00 ft Total Volume: 12.759 bbl

Num Fluid Samples: 0

Num Gas Bombs: 0

Serial #:

Laboratory Name:

Laboratory Location:

Recovery Comments: Water Salinity: .143 @ 85 degrees= 40,000

