

**TRILOBITE  
TESTING, INC.**

## DRILL STEM TEST REPORT

Prepared For: **Raydon Exploration, Inc**

1601 NW Expressway  
Ste. #1300  
Oklahoma City, OK 73118

ATTN: Ed Grieves / Jeff Qu

**Parity #2-34**

**34-33s-31w Seward,KS**

Start Date: 2014.10.24 @ 18:27:00

End Date: 2014.10.25 @ 07:43:00

Job Ticket #: 56572                      DST #: 1

Trilobite Testing, Inc

1515 Commerce Parkway Hays, KS 67601

ph: 785-625-4778 fax: 785-625-5620

Printed: 2014.11.10 @ 14:47:40

Raydon Exploration, Inc

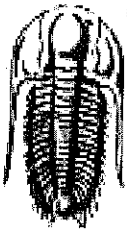
34-33s-31w Seward,KS

Parity #2-34

DST # 1

LKC/A

2014.10.24



**TRILOBITE TESTING, INC**

# DRILL STEM TEST REPORT

Raydon Exploration, Inc  
 1601 NW Expressway  
 Ste. #1300  
 Oklahoma City, OK 73118  
 ATTN: Ed Grieves / Jeff Qu

**34-33s-31w Seward,KS**

**Parity #2-34**

Job Ticket: 56572

DST#: 1

Test Start: 2014.10.24 @ 18:27:00

## GENERAL INFORMATION:

Formation: **LKC 'A'**  
 Deviated: No Whipstock: ft (KB)  
 Time Tool Opened: 00:33:30  
 Time Test Ended: 07:43:00

Test Type: Conventional Bottom Hole (Initial)  
 Tester: Cornelio Landa III  
 Unit No: 67

Interval: **4466.00 ft (KB) To 4480.00 ft (KB) (TVD)**  
 Total Depth: 4480.00 ft (KB) (TVD)  
 Hole Diameter: 7.88 inches Hole Condition:

Reference Elevations: 2750.00 ft (KB)  
 2740.00 ft (CF)  
 KB to GR/CF: 10.00 ft

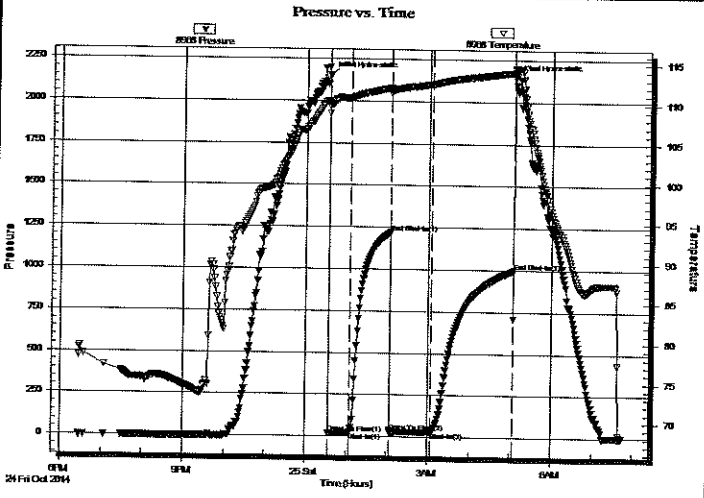
**Serial #: 8968**

**Outside**

Press@RunDepth: 29.51 psig @ 4467.00 ft (KB)  
 Start Date: 2014.10.24 End Date: 2014.10.25  
 Start Time: 18:27:05 End Time: 07:43:00

Capacity: 8000.00 psig  
 Last Calb.: 2014.10.25  
 Time On Btm: 2014.10.25 @ 00:33:15  
 Time Off Btm: 2014.10.25 @ 05:05:30

TEST COMMENT: IF: Weak surface blow -Died in 20 min.  
 IS: No return  
 FF: No blow  
 FS: No return



## PRESSURE SUMMARY

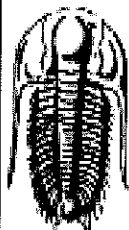
Time (Min.)	Pressure (psig)	Temp (deg F)	Annotation
0	2150.52	110.36	Initial Hydro-static
1	15.66	108.79	Open To Flow (1)
31	22.73	110.62	Shut-In(1)
91	1219.58	112.00	End Shut-In(1)
91	26.38	111.59	Open To Flow (2)
151	29.51	112.50	Shut-In(2)
271	996.14	114.00	End Shut-In(2)
273	2140.81	114.50	Final Hydro-static

## Recovery

Length (ft)	Description	Volume (bbl)
10.00	Mud 100m	0.05

## Gas Rates

Choke (inches)	Pressure (psig)	Gas Rate (Mcf/d)



**TRILOBITE  
TESTING, INC.**

## DRILL STEM TEST REPORT

Raydon Exploration, Inc

1601 NW Expressway  
Ste. #1300  
Oklahoma City, OK 73118  
ATTN: Ed Grieves / Jeff Qu

34-33s-31w Seward,KS

**Parity #2-34**

Job Ticket: 56572

**DST#: 1**

Test Start: 2014.10.24 @ 18:27:00

### GENERAL INFORMATION:

Formation: **LKC 'A'**

Deviated: **No Whipstock: ft (KB)**

Time Tool Opened: **00:33:30**

Time Test Ended: **07:43:00**

Test Type: **Conventional Bottom Hole (Initial)**

Tester: **Cornelio Landa III**

Unit No: **67**

Interval: **4466.00 ft (KB) To 4480.00 ft (KB) (TVD)**

Total Depth: **4480.00 ft (KB) (TVD)**

Hole Diameter: **7.88 inches** Hole Condition:

Reference Elevations: **2750.00 ft (KB)**

**2740.00 ft (CF)**

**KB to GR/CF: 10.00 ft**

### Serial #: 8969

Inside

Press@RunDepth: **psig @ 4467.00 ft (KB)**

Start Date: **2014.10.24**

End Date:

2014.10.25

Capacity: **8000.00 psig**

Last Calib.:

2014.10.25

Start Time: **18:27:05**

End Time:

07:43:00

Time On Btm:

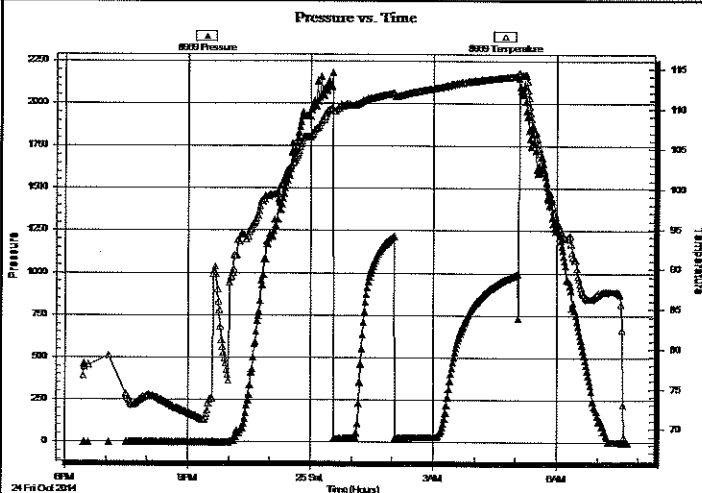
Time Off Btm:

TEST COMMENT: **IF: Weak surface blow -Died in 20 min.**

**IS: No return**

**FF: No blow**

**FS: No return**



### PRESSURE SUMMARY

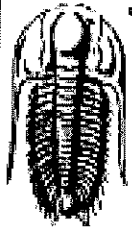
Time (Min.)	Pressure (psig)	Temp (deg F)	Annotation

### Recovery

Length (ft)	Description	Volume (bbl)
10.00	Mud 100m	0.05

### Gas Rates

Choke (inches)	Pressure (psig)	Gas Rate (Mcf/d)



**TRILOBITE  
TESTING, INC**

# DRILL STEM TEST REPORT

**TOOL DIAGRAM**

Raydon Exploration, Inc

**34-33s-31w Seward,KS**

1601 NW Expressway  
Ste. #1300  
Oklahoma City, OK 73118  
ATTN: Ed Grieves / Jeff Qu

**Parity #2-34**

Job Ticket: 56572

**DST#: 1**

Test Start: 2014.10.24 @ 18:27:00

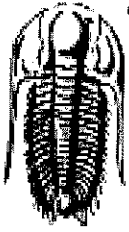
**Tool Information**

Drill Pipe:	Length: 4285.00 ft	Diameter: 3.80 inches	Volume: 60.11 bbl	Tool Weight: 2500.00 lb
Heavy Wt. Pipe:	Length: 0.00 ft	Diameter: 0.00 inches	Volume: 0.00 bbl	Weight set on Packer: 28000.00 lb
Drill Collar:	Length: 180.00 ft	Diameter: 2.25 inches	Volume: 0.89 bbl	Weight to Pull Loose: 10000.00 lb
			<u>Total Volume: 61.00 bbl</u>	Tool Chased 0.00 ft
Drill Pipe Above KB:	26.00 ft			String Weight: Initial 65000.00 lb
Depth to Top Packer:	4466.00 ft			Final 65000.00 lb
Depth to Bottom Packer:	ft			
Interval between Packers:	14.00 ft			
Tool Length:	41.00 ft			
Number of Packers:	2	Diameter: 6.75 inches		
Tool Comments:				

**Tool Description**

Tool Description	Length (ft)	Serial No.	Position	Depth (ft)	Accum. Lengths
Change Over Sub	1.00			4440.00	
Shut In Tool	5.00			4445.00	
Hydraulic tool	5.00			4450.00	
Jars	5.00			4455.00	
Safety Joint	2.00			4457.00	
Packer	5.00			4462.00	27.00 Bottom Of Top Packer
Packer	4.00			4466.00	
Stubb	1.00			4467.00	
Recorder	0.00	8969	Inside	4467.00	
Recorder	0.00	8968	Outside	4467.00	
Perforations	10.00			4477.00	
Bullnose	3.00			4480.00	14.00 Bottom Packers & Anchor

**Total Tool Length: 41.00**



**TRILOBITE  
TESTING, INC**

# DRILL STEM TEST REPORT

**FLUID SUMMARY**

Raydon Exploration, Inc  
1601 NW Expressway  
Ste. #1300  
Oklahoma City, OK 73118  
ATTN: Ed Grieves / Jeff Qu

**34-33s-31w Seward,KS**  
**Parity #2-34**  
Job Ticket: 56572      **DST#: 1**  
Test Start: 2014.10.24 @ 18:27:00

## Mud and Cushion Information

Mud Type: Gel Chem	Cushion Type:	Oil API:	deg API
Mud Weight: 9.00 lb/gal	Cushion Length: ft	Water Salinity:	ppm
Viscosity: 45.00 sec/qt	Cushion Volume: bbl		
Water Loss: 9.38 in <sup>3</sup>	Gas Cushion Type:		
Resistivity: 0.00 ohm.m	Gas Cushion Pressure: psig		
Salinity: 2000.00 ppm			
Filter Cake: 1.00 inches			

## Recovery Information

Recovery Table

Length ft	Description	Volume bbl
10.00	Mud 100m	0.049

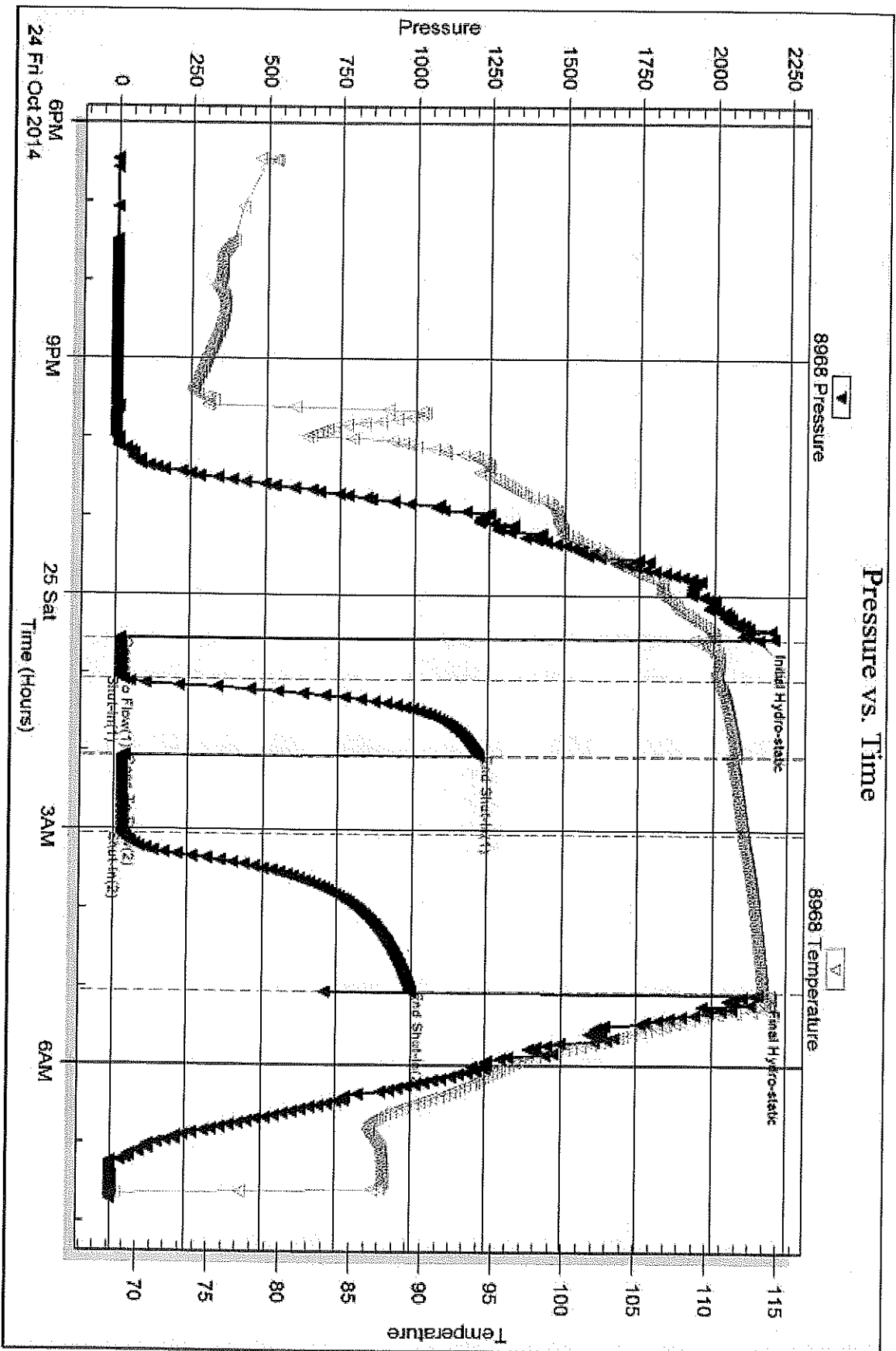
Total Length: 10.00 ft      Total Volume: 0.049 bbl  
 Num Fluid Samples: 0      Num Gas Bombs: 0      Serial #:  
 Laboratory Name:      Laboratory Location:  
 Recovery Comments:

Serial #: 8968

Outside Raydon Exploration, Inc

Parity #2-34

DST Test Number: 1



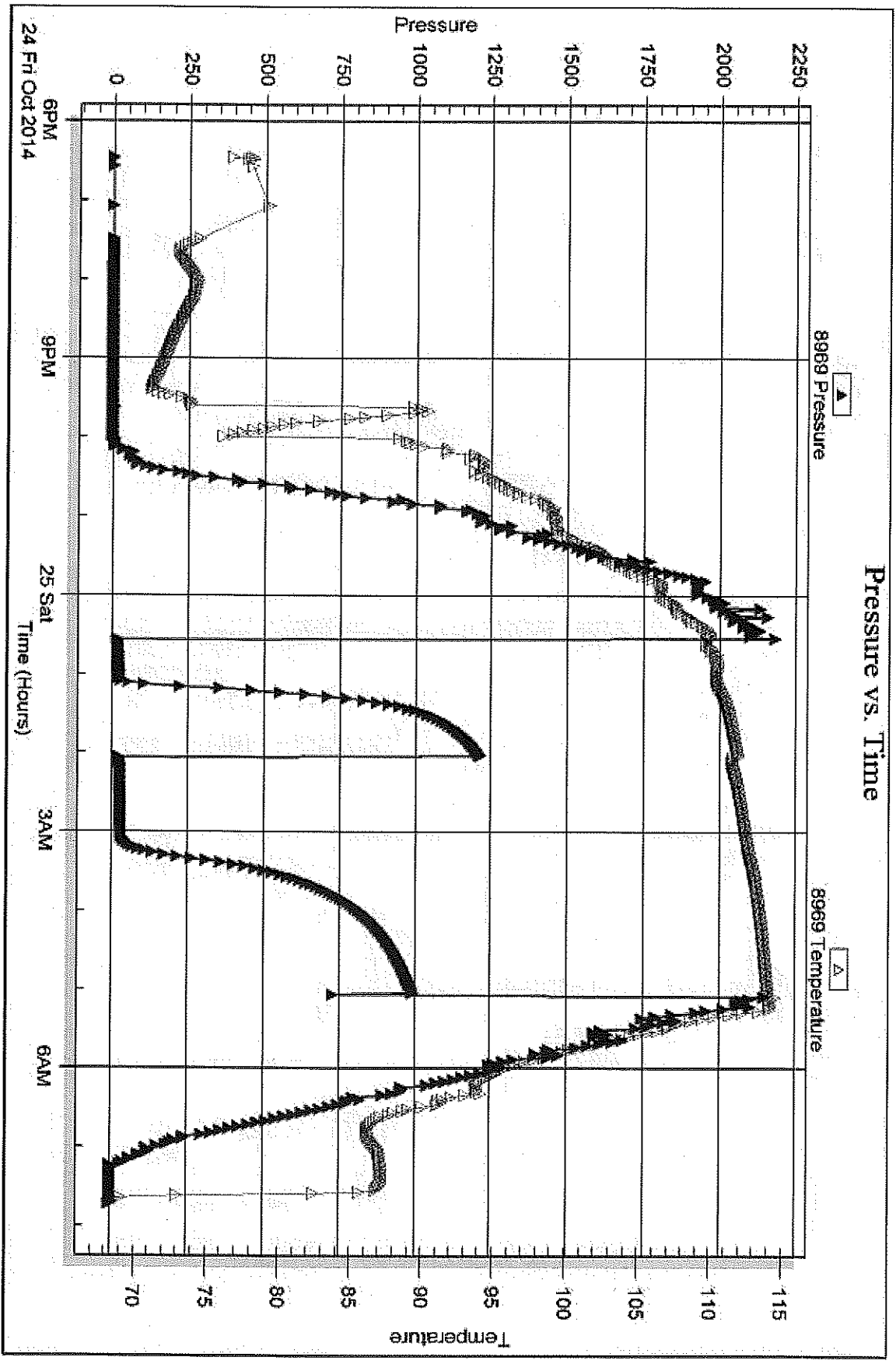
Serial #: 8969

Inside

Raydon Exploration, Inc

Partly #2-34

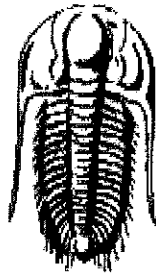
DSI Test Number: 1



Traabie Testing, Inc

Ref. No: 56572

Printed: 2014.11.10 @ 14:47:41



**TRILOBITE  
TESTING, INC.**

## DRILL STEM TEST REPORT

Prepared For: **Raydon Exploration, Inc**

1601 NW Expressway  
Ste. #1300  
Oklahoma City, OK 73118

ATTN: Ed Grieves / Jeff Qu

**Parity #2-34**

**34-33s-31w Seward,KS**

Start Date: 2014.10.27 @ 20:58:00

End Date: 2014.10.28 @ 09:58:45

Job Ticket #: 56573                      DST #: 2

Trilobite Testing, Inc

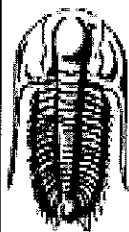
1515 Commerce Parkway Hays, KS 67601

ph: 785-625-4778 fax: 785-625-5620

Printed: 2014.11.10 @ 14:47:18

Raydon Exploration, Inc  
34-33s-31w Seward,KS  
Parity #2-34  
DST # 2  
Upper Marmaton  
2014.10.27





**TRILOBITE  
TESTING, INC.**

# DRILL STEM TEST REPORT

Raydon Exploration, Inc  
1601 NW Expressway  
Ste. #1300  
Oklahoma City, OK 73118  
ATTN: Ed Grieves / Jeff Qu

**34-33s-31w Seward,KS**  
**Parity #2-34**  
Job Ticket: 56573      DST#: 2  
Test Start: 2014.10.27 @ 20:58:00

## GENERAL INFORMATION:

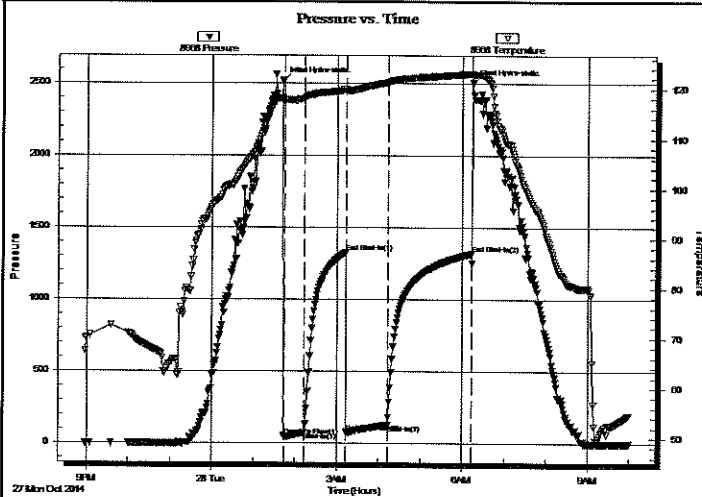
Formation: **Upper Marmaton**  
Deviated: No Whipstock: ft (KB)  
Time Tool Opened: 01:44:00  
Time Test Ended: 09:58:45  
Interval: **5124.00 ft (KB) To 5147.00 ft (KB) (TVD)**  
Total Depth: 5147.00 ft (KB) (TVD)  
Hole Diameter: 7.88 inches Hole Condition: Good  
Test Type: Conventional Bottom Hole (Reset)  
Tester: Cornelio Landa III  
Unit No: 67  
Reference Elevations: 2750.00 ft (KB)  
2740.00 ft (CF)  
KB to GR/CF: 10.00 ft

## Serial #: 8968

Outside

Press@RunDepth: 128.55 psig @ 5125.00 ft (KB) Capacity: 8000.00 psig  
Start Date: 2014.10.27 End Date: 2014.10.28 Last Calib.: 2014.10.28  
Start Time: 20:58:05 End Time: 09:58:45 Time On Btm: 2014.10.28 @ 01:42:30  
Time Off Btm: 2014.10.28 @ 06:15:30

TEST COMMENT: IF: B.o.b in 30 seconds  
IS: Bled off in 4 min.-4 in. return blow back  
FF: B.o.b. in 30 seconds-G.T.S. in 20 min.-Gauged gas-took sample-Refer to gas rates  
FS: Bled off in 10 min.-4 1/2 in. return blow back



## PRESSURE SUMMARY

Time (Min.)	Pressure (psig)	Temp (deg F)	Annotation
0	2516.98	117.97	Initial Hydro-static
2	46.86	117.78	Open To Flow (1)
32	73.38	118.19	Shut-In(1)
91	1329.72	120.03	End Shut-In(1)
91	76.60	119.60	Open To Flow (2)
151	128.55	121.23	Shut-In(2)
271	1320.08	123.03	End Shut-In(2)
273	2505.95	123.00	Final Hydro-static

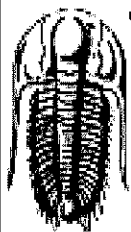
## Recovery

Length (ft)	Description	Volume (bbl)
180.00	Ocw & M 4o 36w 60m	0.89
63.00	Ocm & G 15o 40m 45g	0.88
63.00	Cocg 35g 65o	0.88
31.00	Cgo 10g 90o	0.43
0.00	Gravity 38@54=39 Rw .178 @ 49.5=6200.00	

\* Recovery from multiple tests

## Gas Rates

	Choke (inches)	Pressure (psig)	Gas Rate (Mcf/d)
First Gas Rate	0.13	2.50	6.33
Last Gas Rate	0.13	3.50	6.70
Max. Gas Rate	0.13	3.50	6.70



**TRILOBITE**  
TESTING, INC.

## DRILL STEM TEST REPORT

Raydon Exploration, Inc  
1601 NW Expressway  
Ste. #1300  
Oklahoma City, OK 73118  
ATTN: Ed Grieves / Jeff Qu

**34-33s-31w Seward,KS**

**Parity #2-34**

Job Ticket: 56573

DST#: 2

Test Start: 2014.10.27 @ 20:58:00

### GENERAL INFORMATION:

Formation: **Upper Marmaton**

Deviated: No Whipstock: ft (KB)

Time Tool Opened: 01:44:00

Time Test Ended: 09:58:45

Test Type: Conventional Bottom Hole (Reset)

Tester: Cornelio Landa III

Unit No: 67

Interval: **5124.00 ft (KB) To 5147.00 ft (KB) (TVD)**

Reference Elevations: 2750.00 ft (KB)

Total Depth: 5147.00 ft (KB) (TVD)

2740.00 ft (CF)

Hole Diameter: 7.88 inches Hole Condition: Good

KB to GR/CF: 10.00 ft

Serial #: **8969** Inside

Press@RunDepth: psig @ 5125.00 ft (KB)

Capacity: 8000.00 psig

Start Date: 2014.10.27

End Date:

2014.10.28

Last Calib.:

2014.10.28

Start Time:

20:58:05

End Time:

09:58:45

Time On Btm:

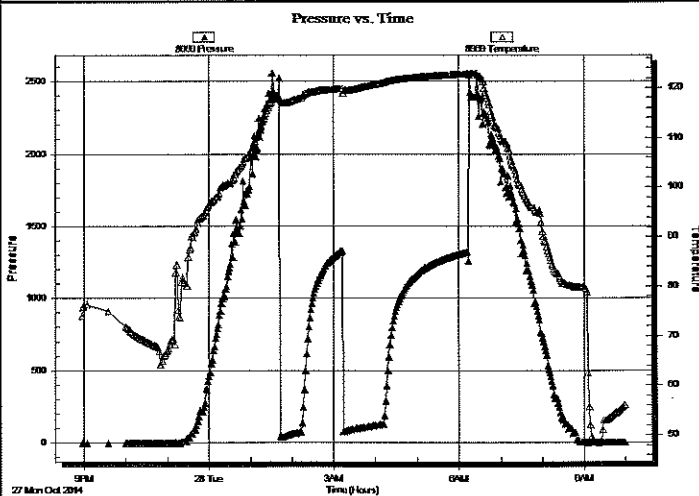
Time Off Btm:

TEST COMMENT: IF: B.o.b in 30 seconds

IS: Bled off in 4 min.-4 in. return blow back

FF: B.o.b. in 30 seconds-G.T.S. in 20 min.-Gauged gas-took sample-Refer to gas rates

FS: Bled off in 10 min.-4 1/2 in. return blow back



### PRESSURE SUMMARY

Time (Min.)	Pressure (psig)	Temp (deg F)	Annotation

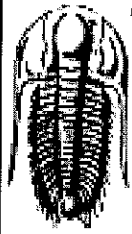
### Recovery

Length (ft)	Description	Volume (bbl)
180.00	Ocw & M4o 36w 60m	0.89
63.00	Ocm & G 15o 40m 45g	0.88
63.00	Cocg 35g 65o	0.88
31.00	Cgo 10g 90o	0.43
0.00	Gravity 38@54=39 Rw .178 @ 49.5=6200.00	

\* Recovery from multiple tests

### Gas Rates

	Choke (inches)	Pressure (psig)	Gas Rate (Mc/d)
First Gas Rate	0.13	2.50	6.33
Last Gas Rate	0.13	3.50	6.70
Max. Gas Rate	0.13	3.50	6.70



**TRILOBITE  
TESTING, INC**

# DRILL STEM TEST REPORT

**TOOL DIAGRAM**

Raydon Exploration, Inc

**34-33s-31w Seward,KS**

1601 NW Expressway  
Ste. #1300  
Oklahoma City, OK 73118  
ATTN: Ed Grieves / Jeff Qu

**Parity #2-34**

Job Ticket: 56573

**DST#: 2**

Test Start: 2014.10.27 @ 20:58:00

**Tool Information**

Drill Pipe:	Length: 4949.00 ft	Diameter: 3.80 inches	Volume: 69.42 bbl	Tool Weight: 2500.00 lb
Heavy Wt. Pipe:	Length: 0.00 ft	Diameter: 0.00 inches	Volume: 0.00 bbl	Weight set on Packer: 28000.00 lb
Drill Collar:	Length: 180.00 ft	Diameter: 2.25 inches	Volume: 0.89 bbl	Weight to Pull Loose: 10000.00 lb
			<u>Total Volume: 70.31 bbl</u>	Tool Chased 0.00 ft
Drill Pipe Above KB:	32.00 ft			String Weight: Initial 70000.00 lb
Depth to Top Packer:	5124.00 ft			Final 72000.00 lb
Depth to Bottom Packer:	ft			
Interval between Packers:	23.00 ft			
Tool Length:	50.00 ft			
Number of Packers:	2	Diameter: 6.75 inches		

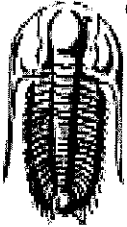
Tool Comments:

**Tool Description**

**Length (ft) Serial No. Position Depth (ft) Accum. Lengths**

Tool Description	Length (ft)	Serial No.	Position	Depth (ft)	Accum. Lengths
Change Over Sub	1.00			5098.00	
Shut In Tool	5.00			5103.00	
Hydraulic tool	5.00			5108.00	
Jars	5.00			5113.00	
Safety Joint	2.00			5115.00	
Packer	5.00			5120.00	27.00 Bottom Of Top Packer
Packer	4.00			5124.00	
Stubb	1.00			5125.00	
Recorder	0.00	8969	Inside	5125.00	
Recorder	0.00	8968	Outside	5125.00	
Perforations	19.00			5144.00	
Bullnose	3.00			5147.00	23.00 Bottom Packers & Anchor

**Total Tool Length: 50.00**



**TRILOBITE  
TESTING, INC**

# DRILL STEM TEST REPORT

**FLUID SUMMARY**

Raydon Exploration, Inc

**34-33s-31w Seward,KS**

1601 NW Expressway  
Ste. #1300  
Oklahoma City, OK 73118  
ATTN: Ed Grieves / Jeff Qu

**Parity #2-34**

Job Ticket: 56573

**DST#: 2**

Test Start: 2014.10.27 @ 20:58:00

## Mud and Cushion Information

Mud Type: Gel Chem

Cushion Type:

Oil API:

deg API

Mud Weight: 9.00 lb/gal

Cushion Length:

ft

Water Salinity:

62000 ppm

Viscosity: 53.00 sec/qt

Cushion Volume:

bbbl

Water Loss: 7.14 in<sup>3</sup>

Gas Cushion Type:

Resistivity: 0.00 ohm.m

Gas Cushion Pressure:

psig

Salinity: 2500.00 ppm

Filter Cake: 1.00 inches

## Recovery Information

Recovery Table

Length ft	Description	Volume bbl
180.00	Ocw & M4o 36w 60m	0.885
63.00	Ocm & G 15o 40m 45g	0.884
63.00	Cocg 35g 65o	0.884
31.00	Cgo 10g 90o	0.435
0.00	Gravity 38@54=39 Rw .178 @ 49.5=62000	0.000

Total Length: 337.00 ft

Total Volume: 3.088 bbl

Num Fluid Samples: 0

Num Gas Bombs: 0

Serial #:

Laboratory Name:

Laboratory Location:

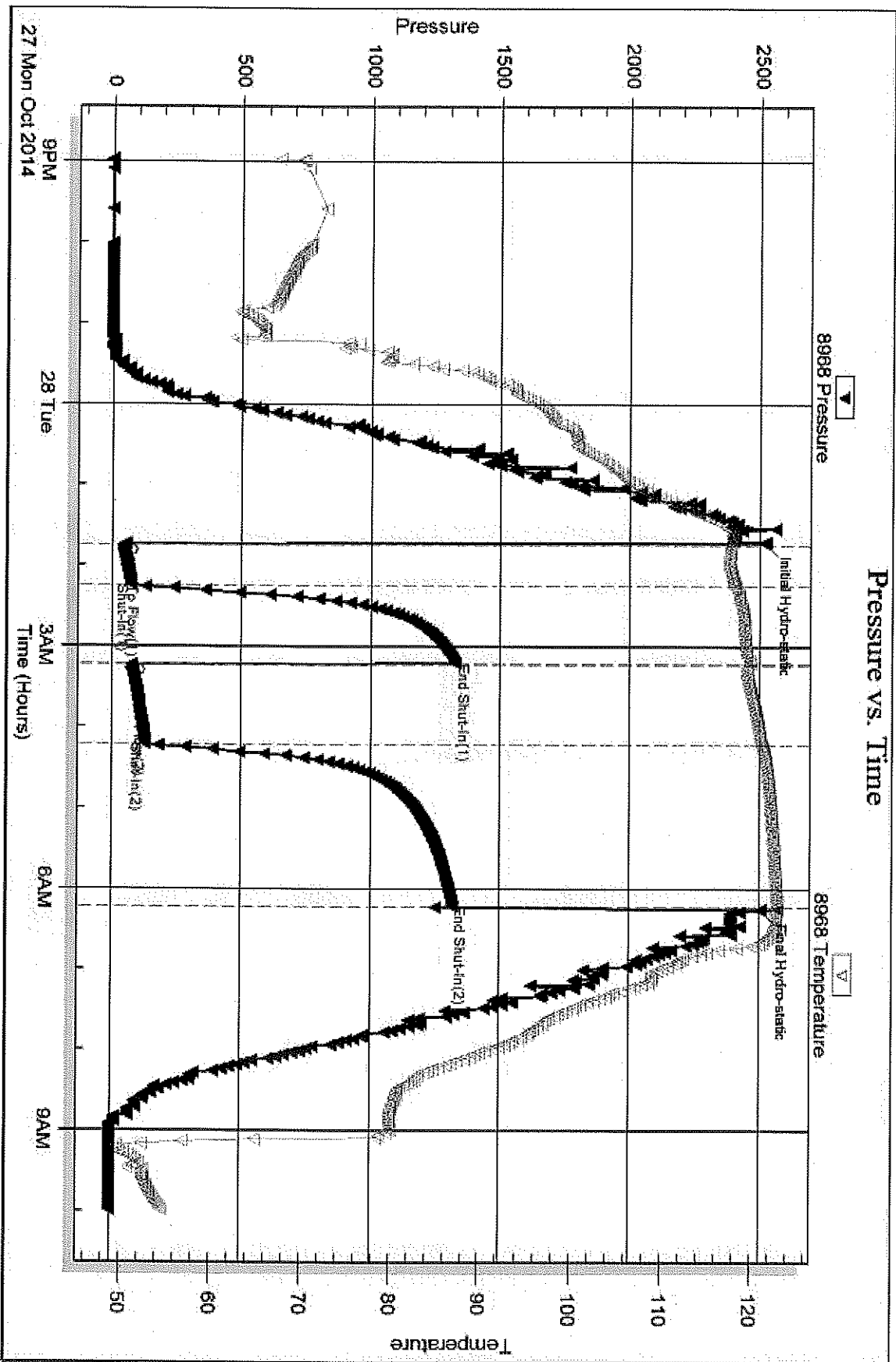
Recovery Comments:

Serial #: 8968

Outside Raydon Exploration, Inc

Parity #2-34

DST Test Number: 2



Tribble Testing, Inc

Ref. No: 56573

Printed: 2014.11.10 @ 14:47:19

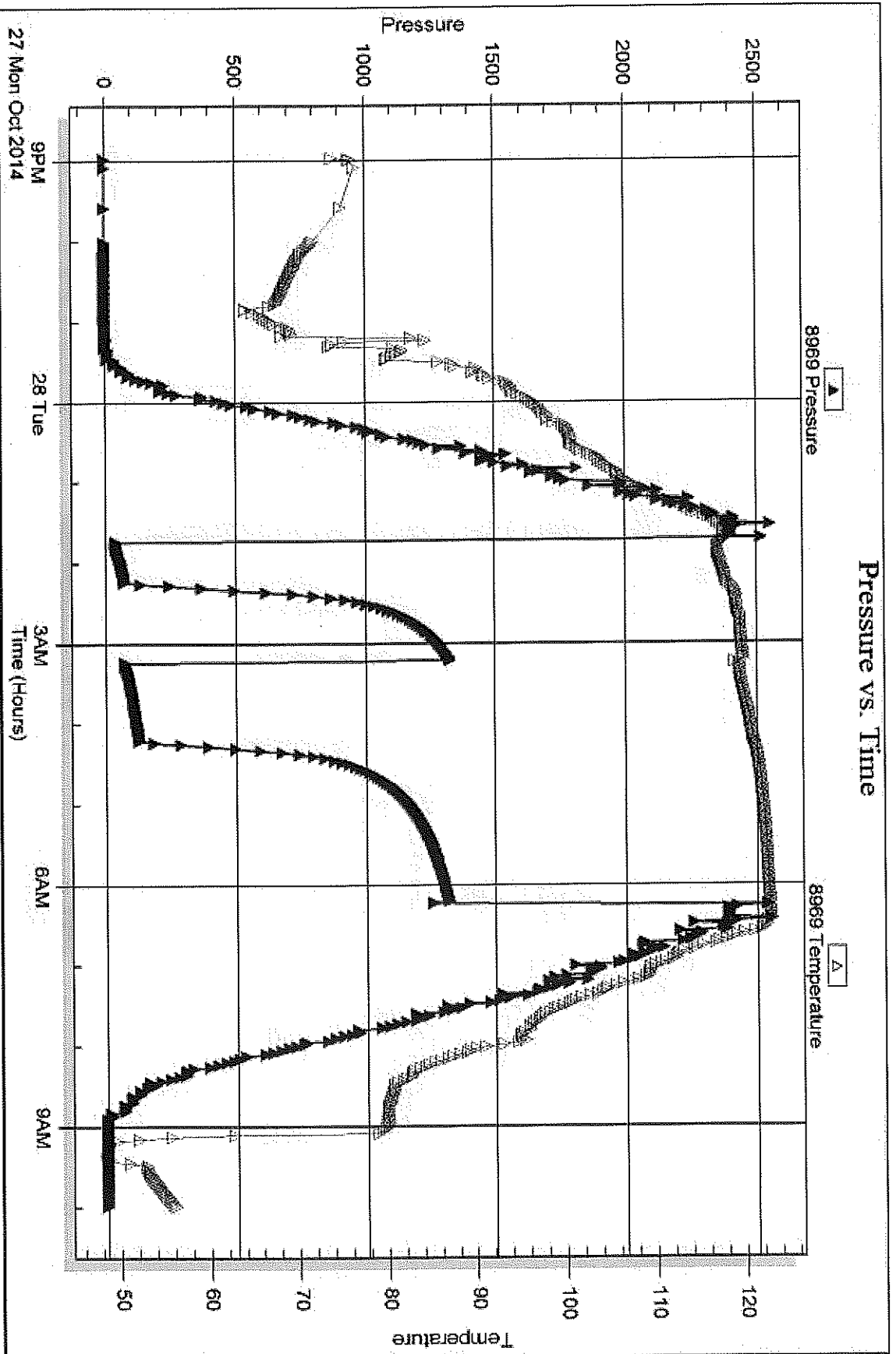
Serial #: 8969

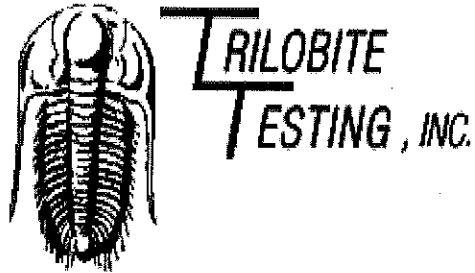
Inside

Raydon Exploration, Inc

Parity #2-34

DSI Test Number: 2





## DRILL STEM TEST REPORT

Prepared For: **Raydon Exploration, Inc**

1601 NW Expressway  
Ste. #1300  
Oklahoma City, OK 73118

ATTN: Ed Grieves / Jeff Qu

**Parity #2-34**

**34-33s-31w Seward,KS**

Start Date: 2014.10.29 @ 00:51:00

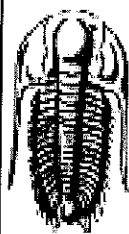
End Date: 2014.10.29 @ 13:06:15

Job Ticket #: 56574                      DST #: 3

Trilobite Testing, Inc  
1515 Commerce Parkway Hays, KS 67601  
ph: 785-625-4778 fax: 785-625-5620

Printed: 2014.11.10 @ 14:46:54

Raydon Exploration, Inc      34-33s-31w Seward,KS      Parity #2-34      DST # 3      Marmaton      2014.10.29



**TRILOBITE  
TESTING, INC**

# DRILL STEM TEST REPORT

Raydon Exploration, Inc  
1601 NW Expressway  
Ste. #1300  
Oklahoma City, OK 73118  
ATTN: Ed Grieves / Jeff Qu

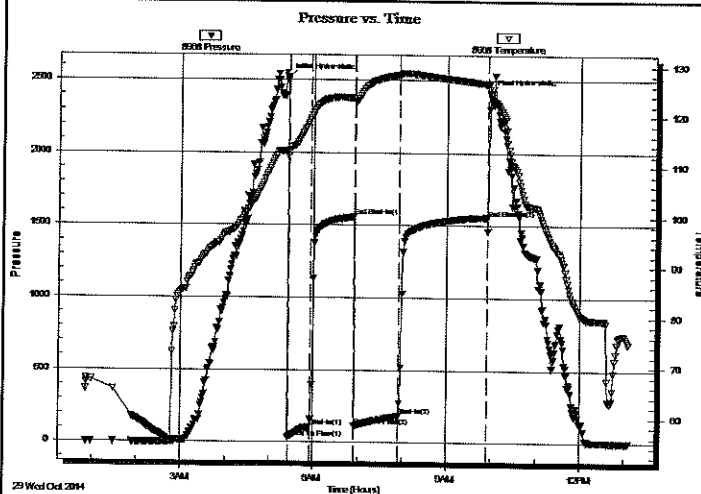
**34-33s-31w Seward,KS**  
**Parity #2-34**  
Job Ticket: 56574      **DST#: 3**  
Test Start: 2014.10.29 @ 00:51:00

## GENERAL INFORMATION:

Formation: **Marmaton**  
Deviated: No Whipstock:                      ft (KB)  
Time Tool Opened: 05:25:15  
Time Test Ended: 13:06:15  
Test Type: Conventional Bottom Hole (Reset)  
Tester: Cornelio Landa III  
Unit No: 67  
Interval: **5153.00 ft (KB) To 5168.00 ft (KB) (TVD)**  
Total Depth: 5168.00 ft (KB) (TVD)  
Reference Elevations: 2750.00 ft (KB)  
Hole Diameter: 7.88 inches Hole Condition:                      2740.00 ft (CF)  
KB to GR/CF: 10.00 ft

**Serial #: 8968      Outside**  
Press@RunDepth: 184.06 psig @ 5156.00 ft (KB)      Capacity: 8000.00 psig  
Start Date: 2014.10.29      End Date: 2014.10.29      Last Calib.: 2014.10.29  
Start Time: 00:51:05      End Time: 13:06:15      Time On Btm: 2014.10.29 @ 05:25:00  
Time Off Btm: 2014.10.29 @ 09:57:15

**TEST COMMENT:** IF: B.o.b. in 16 min.-G.T.S. in 18 min.-Too small to gauge-Got sample  
ISI: Bled off in 3 1/2 min.-No return  
FF: Weak surface blow -Built to 3 in. blow  
FSI: Bled off in 1 min.-Weak surface blow back after 4 min. shut-in-Died @ 10 min. into shut-in



## PRESSURE SUMMARY

Time (Min.)	Pressure (psig)	Temp (deg F)	Annotation
0	2517.98	113.11	Initial Hydro-static
1	27.56	112.18	Open To Flow (1)
31	106.03	119.29	Shut-In(1)
90	1560.36	123.65	End Shut-In(1)
90	114.25	123.02	Open To Flow (2)
150	184.06	128.19	Shut-In(2)
270	1558.94	126.55	End Shut-In(2)
273	2414.84	125.51	Final Hydro-static

## Recovery

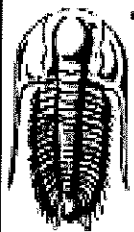
Length (ft)	Description	Volume (bbl)
243.00	Mcw 2m 98w	1.77
63.00	G & Wcm 2g 10w 88m	0.88
63.00	G & Ocm 2g 2o 96m	0.88
0.00	G.T.S Lit w and=Blue Flame	0.00

\* Recovery from multiple tests

## Gas Rates

	Choke (inches)	Pressure (psig)	Gas Rate (Mcf/d)





# TRILOBITE TESTING, INC

## DRILL STEM TEST REPORT

Raydon Exploration, Inc  
 1601 NW Expressway  
 Ste. #1300  
 Oklahoma City, OK 73118  
 ATTN: Ed Grieves / Jeff Qu

**34-33s-31w Seward,KS**  
**Parity #2-34**  
 Job Ticket: 56574      **DST#: 3**  
 Test Start: 2014.10.29 @ 00:51:00

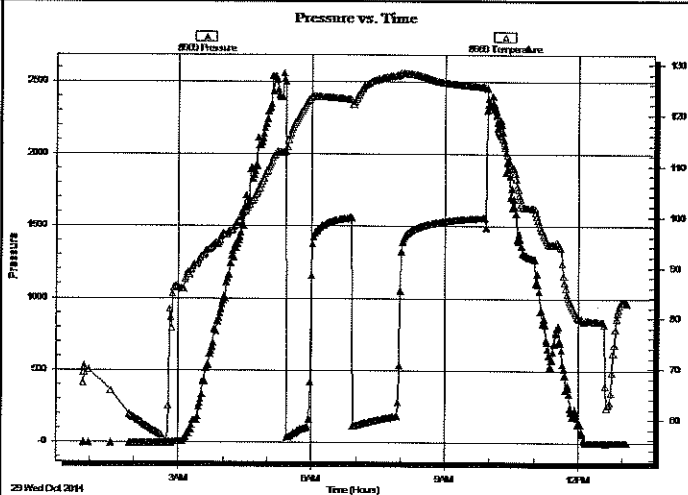
### GENERAL INFORMATION:

Formation: **Marmaton**  
 Deviated: No Whipstock:                      ft (KB)  
 Time Tool Opened: 05:25:15  
 Time Test Ended: 13:06:15  
 Interval: **5153.00 ft (KB) To 5168.00 ft (KB) (TVD)**  
 Total Depth: 5168.00 ft (KB) (TVD)  
 Hole Diameter: 7.88 inches  
 Hole Condition:  
 Test Type: Conventional Bottom Hole (Reset)  
 Tester: Cornelio Landa III  
 Unit No: 67  
 Reference Elevations: 2750.00 ft (KB)  
 2740.00 ft (CF)  
 KB to GR/CF: 10.00 ft

### Serial #: 8969      Inside

Press@RunDepth:                      psig @ 5156.00 ft (KB)      Capacity: 8000.00 psig  
 Start Date: 2014.10.29      End Date: 2014.10.29      Last Calib.: 2014.10.29  
 Start Time: 00:51:05      End Time: 13:06:00      Time On Btm:  
    Time Off Btm:

TEST COMMENT: IF: B.o.b. in 16 min.-G.T.S. in 18 min.-Too small to gauge-Got sample  
 IS: Bled off in 3 1/2 min.-No return  
 FF: Weak surface blow-Built to 3 in. blow  
 FS: Bled off in 1 min.-Weak surface blow back after 4 min. shut-in-Died @ 10 min. into shut-in



### PRESSURE SUMMARY

Time (Min.)	Pressure (psig)	Temp (deg F)	Annotation

### Recovery

Length (ft)	Description	Volume (bbl)
243.00	Mcw 2m 98w	1.77
63.00	G & Wcm 2g 10w 88m	0.88
63.00	G & Ocm 2g 2o 96m	0.88
0.00	G.T.S Lit w and=Blue Flame	0.00

\* Recovery from multiple tests

### Gas Rates

Choke (inches)	Pressure (psig)	Gas Rate (Mcf/d)



**TRILOBITE  
TESTING, INC**

## DRILL STEM TEST REPORT

TOOL DIAGRAM

Raydon Exploration, Inc

34-33s-31w Seward,KS

1601 NW Expressway  
Ste. #1300  
Oklahoma City, OK 73118  
ATTN: Ed Grieves / Jeff Qu

Parity #2-34

Job Ticket: 56574

DST#: 3

Test Start: 2014.10.29 @ 00:51:00

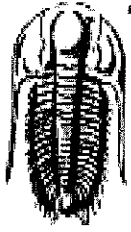
### Tool Information

Drill Pipe:	Length: 4952.00 ft	Diameter: 3.80 inches	Volume: 69.46 bbl	Tool Weight: 2500.00 lb
Heavy Wt. Pipe:	Length: 0.00 ft	Diameter: 0.00 inches	Volume: 0.00 bbl	Weight set on Packer: 28000.00 lb
Drill Collar:	Length: 180.00 ft	Diameter: 2.25 inches	Volume: 0.89 bbl	Weight to Pull Loose: 10000.00 lb
			<u>Total Volume: 70.35 bbl</u>	Tool Chased 0.00 ft
Drill Pipe Above KB:	6.00 ft			String Weight: Initial 74000.00 lb
Depth to Top Packer:	5153.00 ft			Final 74000.00 lb
Depth to Bottom Packer:	ft			
Interval between Packers:	15.00 ft			
Tool Length:	42.00 ft			
Number of Packers:	2	Diameter: 6.75 inches		

Tool Comments:

Tool Description	Length (ft)	Serial No.	Position	Depth (ft)	Accum. Lengths
Change Over Sub	1.00			5127.00	
Shut In Tool	5.00			5132.00	
Hydraulic tool	5.00			5137.00	
Jars	5.00			5142.00	
Safety Joint	2.00			5144.00	
Packer	5.00			5149.00	27.00 Bottom Of Top Packer
Packer	4.00			5153.00	
Stubb	1.00			5154.00	
Perforations	2.00			5156.00	
Recorder	0.00	8969	Inside	5156.00	
Recorder	0.00	8968	Outside	5156.00	
Perforations	9.00			5165.00	
Bullnose	3.00			5168.00	15.00 Bottom Packers & Anchor

**Total Tool Length: 42.00**



**TRILOBITE  
TESTING, INC**

# DRILL STEM TEST REPORT

**FLUID SUMMARY**

Raydon Exploration, Inc  
1601 NW Expressway  
Ste. #1300  
Oklahoma City, OK 73118  
ATTN: Ed Grieves / Jeff Qu

**34-33s-31w Seward,KS**  
**Parity #2-34**  
Job Ticket: 56574      **DST#: 3**  
Test Start: 2014.10.29 @ 00:51:00

## Mud and Cushion Information

Mud Type: Gel Chem	Cushion Type:	Oil API:	deg API
Mud Weight: 9.00 lb/gal	Cushion Length: ft	Water Salinity:	25000 ppm
Viscosity: 53.00 sec/qt	Cushion Volume: bbl		
Water Loss: 6.75 in <sup>3</sup>	Gas Cushion Type:		
Resistivity: 0.00 ohm.m	Gas Cushion Pressure: psig		
Salinity: 2700.00 ppm			
Filter Cake: 1.00 inches			

## Recovery Information

Recovery Table

Length ft	Description	Volume bbl
243.00	Mcw 2m 98w	1.769
63.00	G & Wcm 2g 10w 88m	0.884
63.00	G & Ocm 2g 2o 96m	0.884
0.00	G.T.S Lit w and=Blue Flame	0.000

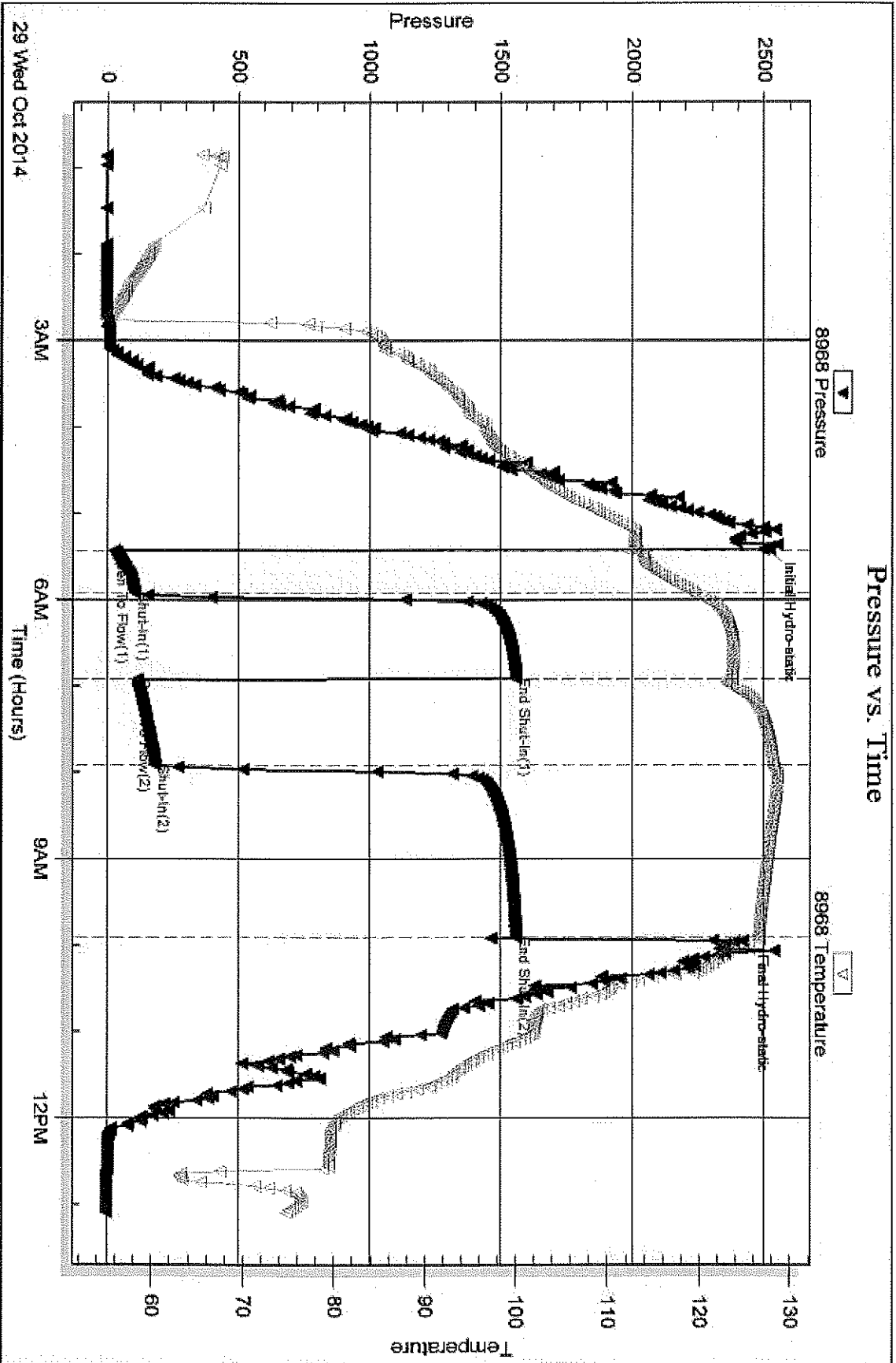
Total Length: 369.00 ft      Total Volume: 3.537 bbl  
Num Fluid Samples: 0      Num Gas Bombs: 0      Serial #:  
Laboratory Name:      Laboratory Location:  
Recovery Comments:

Serial #: 8968

Outside Raydon Exploration, Inc

Partly #2-34

DST Test Number: 3



Triadite Testing, Inc

Ref. No: 56574

Printed: 2014, 11, 10 @ 14:46:55

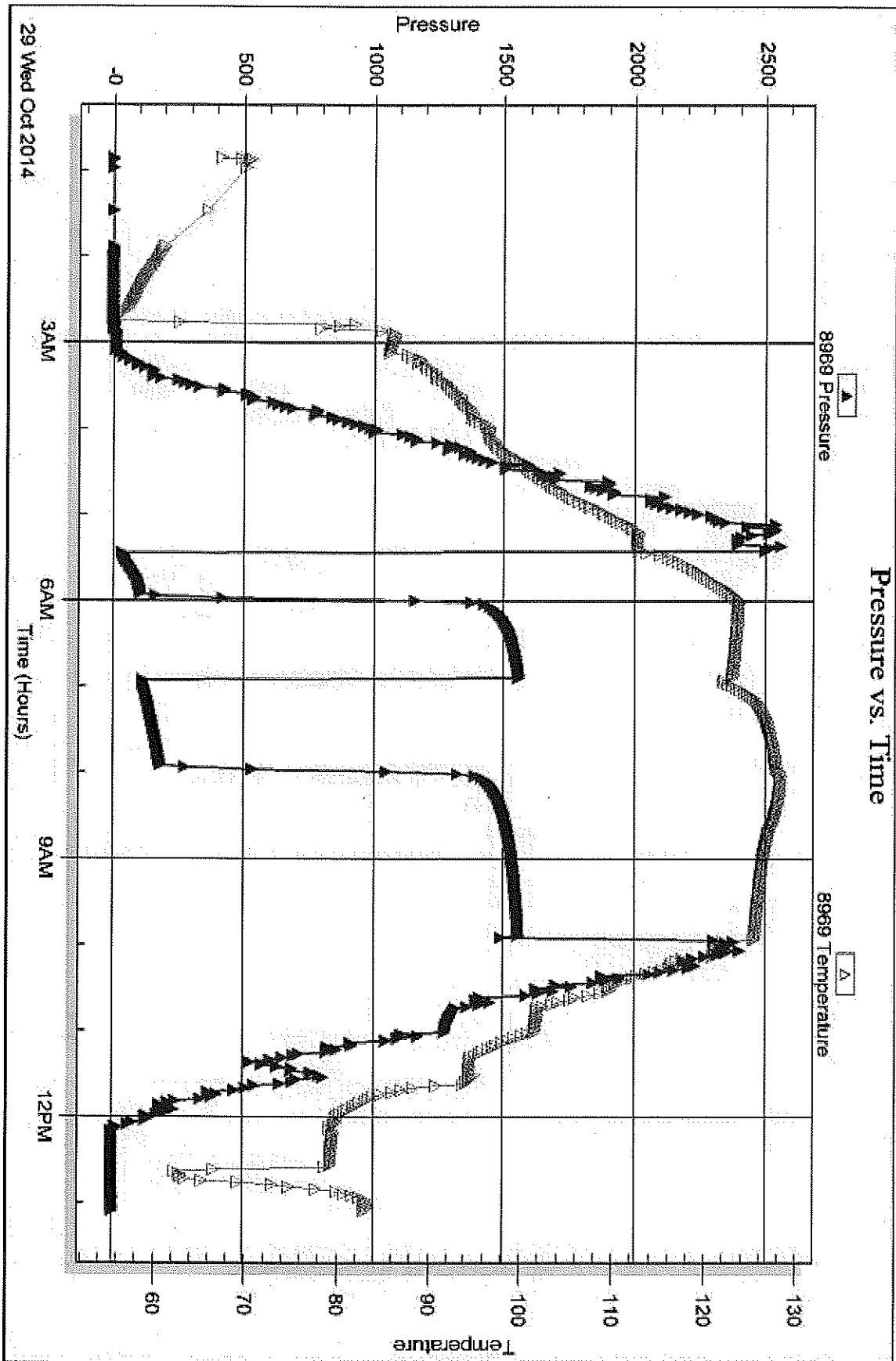
Serial #: 8969

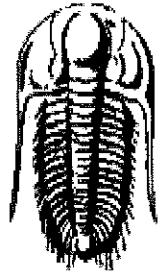
Inside

Raydon Exploration, Inc

Parity #2-34

DST Test Number: 3





**TRILOBITE  
TESTING, INC.**

## DRILL STEM TEST REPORT

Prepared For: **Raydon Exploration, Inc**

1601 NW Expressway  
Ste. #1300  
Oklahoma City, OK 73118

ATTN: Ed Grieves / Jeff Qu

**Parity #2-34**

**34-33s-31w Seward,KS**

Start Date: 2014.10.30 @ 04:19:00

End Date: 2014.10.30 @ 15:05:15

Job Ticket #: 56575                      DST #: 4

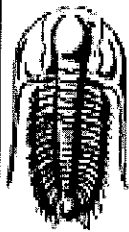
Trilobite Testing, Inc

1515 Commerce Parkway Hays, KS 67601

ph: 785-625-4778 fax: 785-625-5620

Printed: 2014.11.10 @ 14:45:22

Raydon Exploration, Inc  
34-33s-31w Seward,KS  
Parity #2-34  
DST # 4  
3rd Marmaton Perocit  
2014.10.30



**TRILOBITE  
TESTING, INC**

# DRILL STEM TEST REPORT

Raydon Exploration, Inc  
1601 NW Expressway  
Ste. #1300  
Oklahoma City, OK 73118  
ATTN: Ed Grieves / Jeff Qu

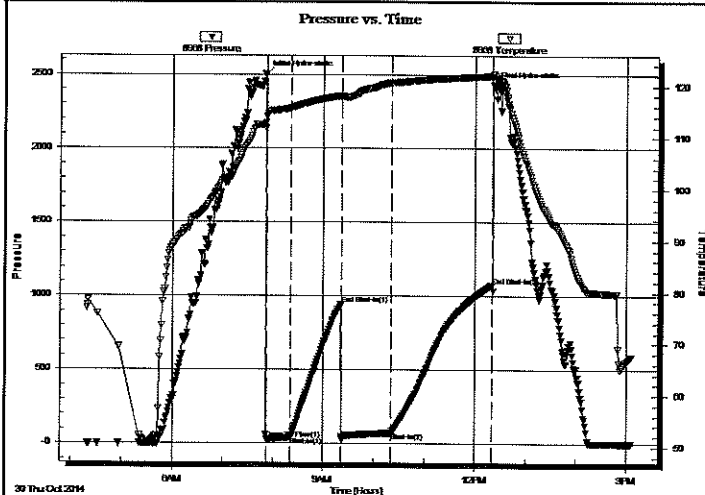
**34-33s-31w Seward, KS**  
**Parity #2-34**  
Job Ticket: 56575      **DST#: 4**  
Test Start: 2014.10.30 @ 04:19:00

## GENERAL INFORMATION:

Formation: **3rd Marmaton Perocit**  
Deviated: No Whipstock:                      ft (KB)  
Time Tool Opened: 07:52:00  
Time Test Ended: 15:05:15  
Interval: **5202.00 ft (KB) To 5221.00 ft (KB) (TVD)**  
Total Depth: 5221.00 ft (KB) (TVD)  
Hole Diameter: 7.88 inches Hole Condition: Good  
Test Type: Conventional Bottom Hole (Reset)  
Tester: Cornelio Landa III  
Unit No: 67  
Reference Elevations: 2750.00 ft (KB)  
2740.00 ft (CF)  
KB to GR/CF: 10.00 ft

**Serial #: 8968**      **Outside**  
Press@RunDepth: 70.31 psig @ 5204.00 ft (KB)      Capacity: 8000.00 psig  
Start Date: 2014.10.30      End Date: 2014.10.30      Last Calib.: 2014.10.30  
Start Time: 04:19:05      End Time: 15:05:15      Time On Btm: 2014.10.30 @ 07:50:45  
Time Off Btm: 2014.10.30 @ 12:21:30

**TEST COMMENT:** IF: B.o.b. on 1 min. 45 sec.  
IS: Bled off in 2 min.-No return  
FF: B.o.b. in 10 seconds  
FS: Bled off in 2 min.- Surface blow back-Built to 1 1/2 in. of blow back



## PRESSURE SUMMARY

Time (Min.)	Pressure (psig)	Temp (deg F)	Annotation
0	2496.64	112.88	Initial Hydro-static
2	27.81	113.94	Open To Flow (1)
31	39.40	115.75	Shut-In(1)
90	943.70	118.06	End Shut-In(1)
91	32.64	117.94	Open To Flow (2)
150	70.31	120.62	Shut-In(2)
270	1074.99	121.91	End Shut-In(2)
271	2429.64	122.38	Final Hydro-static

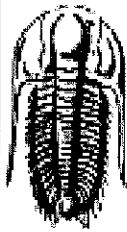
## Recovery

Length (ft)	Description	Volume (bbl)
60.00	Ocm & G 15o 35m 50g	0.30
60.00	Ocg & M 10o 30g 60m	0.30
15.00	Cgo 10g 90o	0.07

\* Recovery from multiple tests

## Gas Rates

Choke (Inches)	Pressure (psig)	Gas Rate (Mcf/d)



**TRILOBITE  
TESTING, INC**

### DRILL STEM TEST REPORT

Raydon Exploration, Inc  
1601 NW Expressway  
Ste. #1300  
Oklahoma City, OK 73118  
ATTN: Ed Grieves / Jeff Qu

**34-33s-31w Seward,KS**  
**Parity #2-34**  
Job Ticket: 56575      DST#: 4  
Test Start: 2014.10.30 @ 04:19:00

**GENERAL INFORMATION:**

Formation:      **3rd Marmaton Perocit**  
Deviated:      No      Whipstock:      ft (KB)  
Time Tool Opened: 07:52:00  
Time Test Ended: 15:05:15

Test Type:   Conventional Bottom Hole (Reset)  
Tester:      Cornelio Landa III  
Unit No:     67

Interval:      **5202.00 ft (KB) To 5221.00 ft (KB) (TVD)**  
Total Depth:   5221.00 ft (KB) (TVD)  
Hole Diameter: 7.88 inches   Hole Condition: Good

Reference Elevations:   2750.00 ft (KB)  
  2740.00 ft (CF)  
KB to GR/CF:            10.00 ft

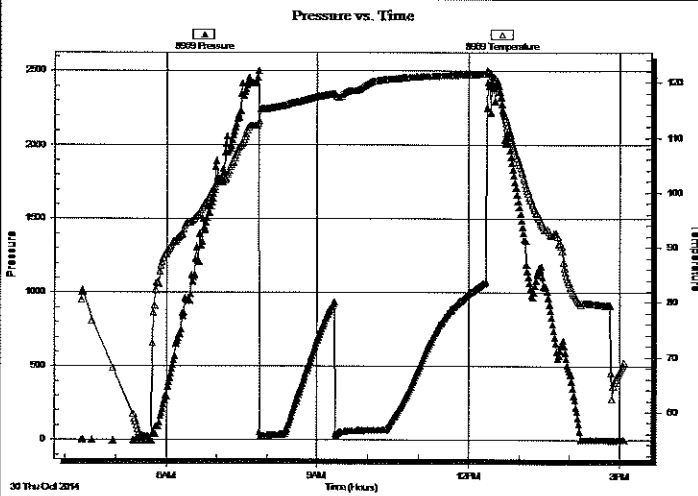
**Serial #: 8969**

**Inside**

Press@RunDepth:      psig @   5204.00 ft (KB)  
Start Date:            2014.10.30      End Date:           2014.10.30  
Start Time:            04:19:05      End Time:           15:05:15

Capacity:              8000.00 psig  
Last Calib.:           2014.10.30  
Time On Btm:  
Time Off Btm:

**TEST COMMENT:** IF: B.o.b. on 1 min. 45 sec.  
                          IS: Bled off in 2 min.-No return  
                          FF: B.o.b. in 10 seconds  
                          FSI: Bled off in 2 min.- Surface blow back-Built to 1 1/2 in. of blow back



**PRESSURE SUMMARY**

Time (Min.)	Pressure (psig)	Temp (deg F)	Annotation

**Recovery**

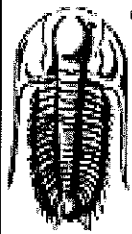
Length (ft)	Description	Volume (bbl)
60.00	Ocm & G 15o 35m 50g	0.30
60.00	Ocg & M 10o 30g 60m	0.30
15.00	Cgo 10g 90o	0.07

**Gas Rates**

Choke (inches)	Pressure (psig)	Gas Rate (Mcf/d)

\* Recovery from multiple tests





**TRILOBITE  
TESTING, INC**

## DRILL STEM TEST REPORT

**TOOL DIAGRAM**

Raydon Exploration, Inc  
1601 NW Expressway  
Ste. #1300  
Oklahoma City, OK 73118  
ATTN: Ed Grieves / Jeff Qu

**34-33s-31w Seward,KS**  
**Parity #2-34**  
Job Ticket: 56575      **DST#: 4**  
Test Start: 2014.10.30 @ 04:19:00

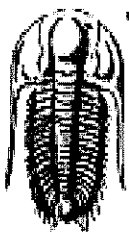
**Tool Information**

Drill Pipe:	Length: 5010.00 ft	Diameter: 3.80 inches	Volume: 70.28 bbl	Tool Weight: 2500.00 lb
Heavy Wt. Pipe:	Length: 0.00 ft	Diameter: 0.00 inches	Volume: 0.00 bbl	Weight set on Packer: 28000.00 lb
Drill Collar:	Length: 180.00 ft	Diameter: 2.25 inches	Volume: 0.89 bbl	Weight to Pull Loose: 10000.00 lb
			<u>Total Volume: 71.17 bbl</u>	Tool Chased 0.00 ft
Drill Pipe Above KB:	15.00 ft			String Weight: Initial 76000.00 lb
Depth to Top Packer:	5202.00 ft			Final 76000.00 lb
Depth to Bottom Packer:	ft			
Interval between Packers:	19.00 ft			
Tool Length:	46.00 ft			
Number of Packers:	2	Diameter: 6.75 inches		
Tool Comments:				

**Tool Description**

Tool Description	Length (ft)	Serial No.	Position	Depth (ft)	Accum. Lengths
Change Over Sub	1.00			5176.00	
Shut In Tool	5.00			5181.00	
Hydraulic tool	5.00			5186.00	
Jars	5.00			5191.00	
Safety Joint	2.00			5193.00	
Packer	5.00			5198.00	27.00      Bottom Of Top Packer
Packer	4.00			5202.00	
Stubb	1.00			5203.00	
Perforations	1.00			5204.00	
Recorder	0.00	8969	Inside	5204.00	
Recorder	0.00	8968	Outside	5204.00	
Perforations	14.00			5218.00	
Bullnose	3.00			5221.00	19.00      Bottom Packers & Anchor

**Total Tool Length: 46.00**



**TRILOBITE  
TESTING, INC**

## DRILL STEM TEST REPORT

**FLUID SUMMARY**

Raydon Exploration, Inc  
1601 NW Expressway  
Ste. #1300  
Oklahoma City, OK 73118  
ATTN: Ed Grieves / Jeff Qu

**34-33s-31w Seward,KS**  
**Parity #2-34**  
Job Ticket: 56575      **DST#: 4**  
Test Start: 2014.10.30 @ 04:19:00

### Mud and Cushion Information

Mud Type: Gel Chem	Cushion Type:	Oil API:	38 deg API
Mud Weight: 9.00 lb/gal	Cushion Length: ft	Water Salinity:	ppm
Viscosity: 58.00 sec/qt	Cushion Volume: bbl		
Water Loss: 5.97 in <sup>3</sup>	Gas Cushion Type:		
Resistivity: 0.00 ohm.m	Gas Cushion Pressure: psig		
Salinity: 2700.00 ppm			
Filter Cake: 1.00 inches			

### Recovery Information

Recovery Table

Length ft	Description	Volume bbl
60.00	Ocm & G 15o 35m 50g	0.295
60.00	Ocg & M 10o 30g 60m	0.295
15.00	Cgo 10g 90o	0.074

Total Length: 135.00 ft      Total Volume: 0.664 bbl

Num Fluid Samples: 0      Num Gas Bombs: 0      Serial #:

Laboratory Name:      Laboratory Location:

Recovery Comments: Gravity= 40 @ 79=38    GIP=1512

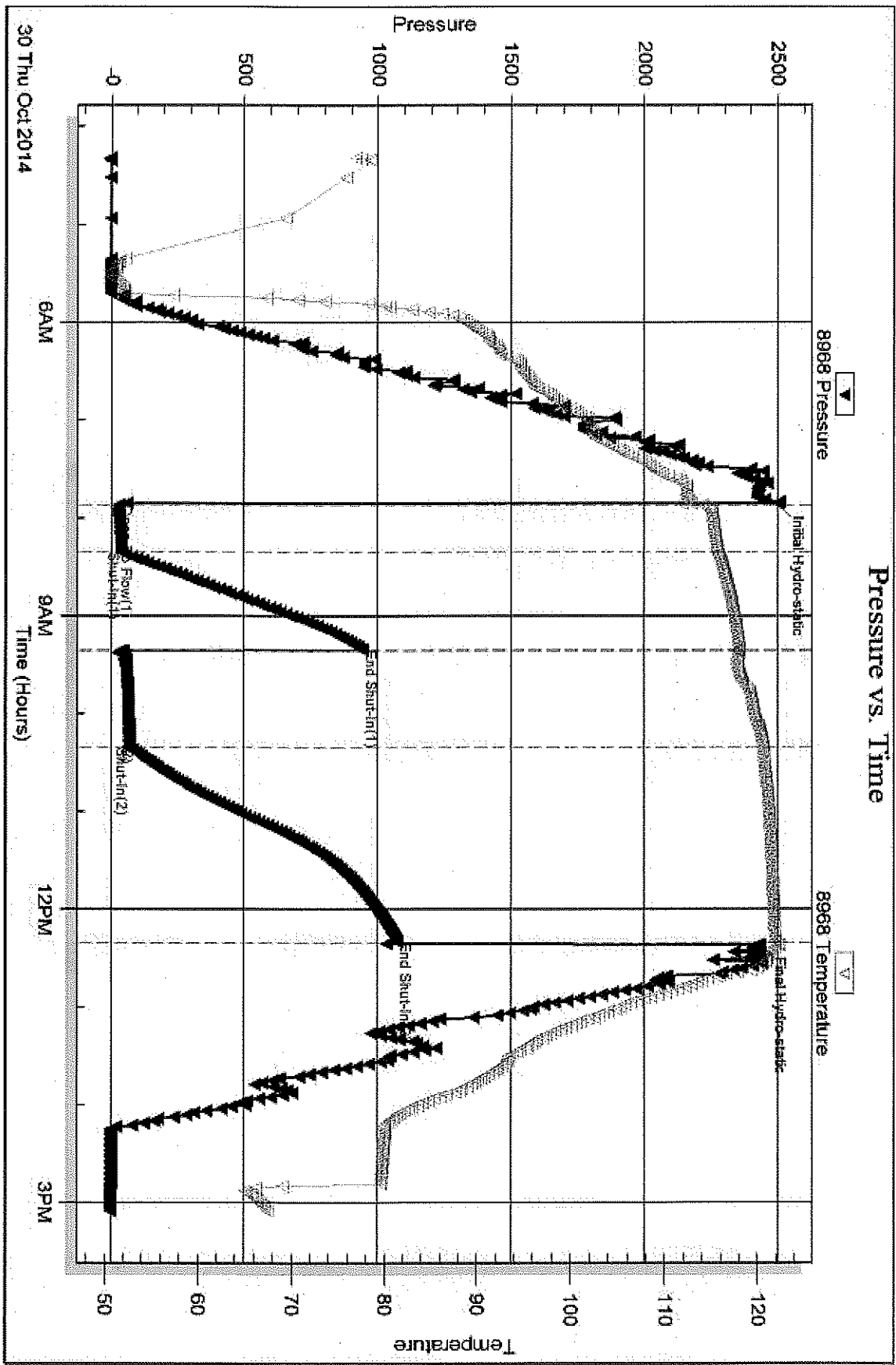
Serial #: 8968

Outside Raydon Exploration, Inc

Party #2-34

DST Test Number: 4

### Pressure vs. Time



Tribble Testing, Inc

Ref. No: 56575

Printed: 2014.11.10 @ 14:45:23

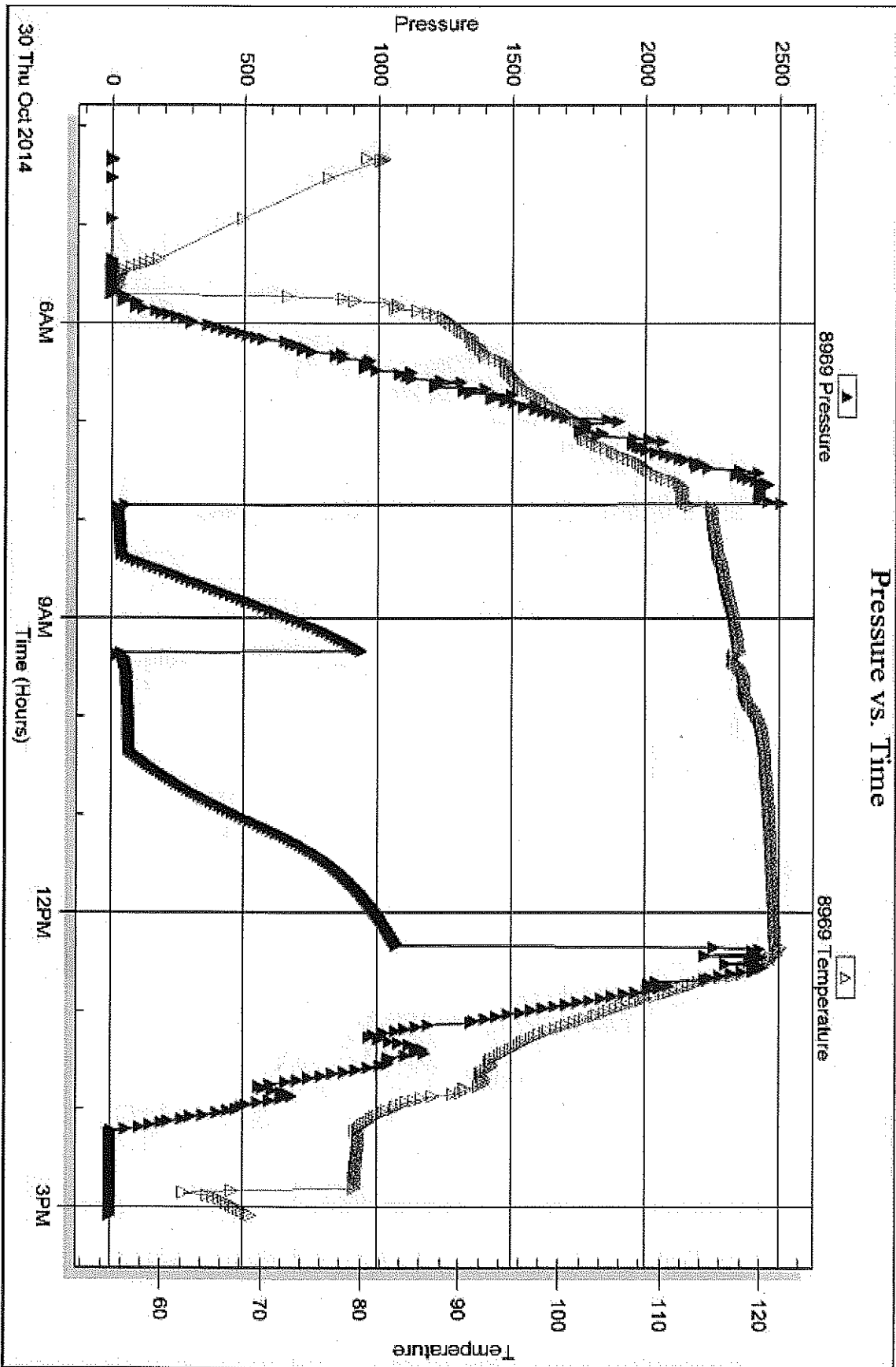
Serial #: 8969

Inside

Raydon Exploration, Inc

Parity #2-34

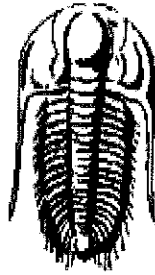
DST Test Number: 4



Triebble Testing, Inc

Ref. No: 56575

Printed: 2014.11.10 @ 14:45:24



**TRILOBITE  
TESTING, INC.**

## DRILL STEM TEST REPORT

Prepared For: **Raydon Exploration, Inc**

1601 NW Expressway  
Ste. #1300  
Oklahoma City, OK 73118

ATTN: Ed Grieves / Jeff Qu

**Parity #2-34**

**34-33s-31w Seward,KS**

Start Date: 2014.11.04 @ 08:35:00

End Date: 2014.11.04 @ 19:16:30

Job Ticket #: 56576                      DST #: 5

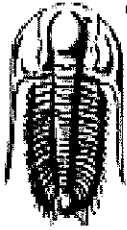
Trilobite Testing, Inc

1515 Commerce Parkway Hays, KS 67601

ph: 785-625-4778 fax: 785-625-5620

Printed: 2014.11.10 @ 14:44:50

Raydon Exploration, Inc      34-33s-31w Seward,KS      Parity #2-34      DST # 5      St. Louis      2014.11.04



**TRILOBITE  
TESTING, INC**

# DRILL STEM TEST REPORT

Raydon Exploration, Inc  
1601 NW Expressway  
Ste. #1300  
Oklahoma City, OK 73118  
ATTN: Ed Grieves / Jeff Qu

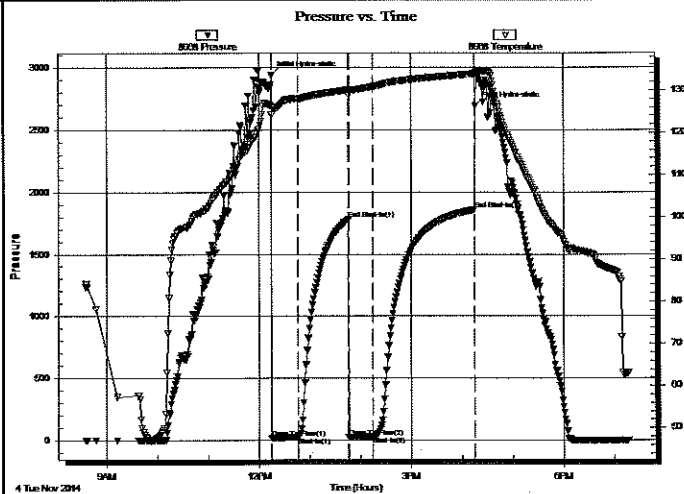
**34-33s-31w Seward,KS**  
**Parity #2-34**  
Job Ticket: 56576      **DST#: 5**  
Test Start: 2014.11.04 @ 08:35:00

## GENERAL INFORMATION:

Formation: **St. Louis**  
Deviated: No      Whipstock:      ft (KB)  
Time Tool Opened: 12:15:00  
Time Test Ended: 19:16:30  
Test Type: Conventional Bottom Hole (Reset)  
Tester: Cornelio Landa III  
Unit No: 67  
Interval: **6120.00 ft (KB) To 6140.00 ft (KB) (TVD)**  
Reference Elevations: 2750.00 ft (KB)  
Total Depth: 6140.00 ft (KB) (TVD)  
2740.00 ft (CF)  
Hole Diameter: 7.88 inches      Hole Condition: Good      KB to GR/CF: 10.00 ft

**Serial #: 8968      Outside**  
Press@RunDepth: 27.34 psig @ 6123.00 ft (KB)      Capacity: 8000.00 psig  
Start Date: 2014.11.04      End Date: 2014.11.04      Last Calib.: 2014.11.04  
Start Time: 08:35:05      End Time: 19:16:30      Time On Btm: 2014.11.04 @ 12:14:45  
Time Off Btm: 2014.11.04 @ 16:15:45

**TEST COMMENT:** IF: Weak surface blow -Built to 1/8 in blow -Died in 26 min. into open  
IS: No return  
FF: Weak surface blow after 15 min. open -Died 5 min. after blow -Died in total of 20 min. into open  
FS: No return



## PRESSURE SUMMARY

Time (Min.)	Pressure (psig)	Temp (deg F)	Annotation
0	2936.12	126.36	Initial Hydro-static
1	17.08	124.25	Open To Flow (1)
31	21.69	127.93	Shut-In(1)
91	1780.26	130.14	End Shut-In(1)
91	23.97	128.84	Open To Flow (2)
121	27.34	130.94	Shut-In(2)
240	1860.00	133.96	End Shut-In(2)
241	2691.15	134.18	Final Hydro-static

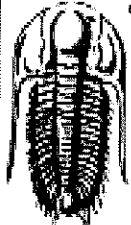
## Recovery

Length (ft)	Description	Volume (bbl)
5.00	Mud w / oil spots	0.02

\* Recovery from multiple tests

## Gas Rates

Choke (inches)	Pressure (psig)	Gas Rate (Mcf/d)



**TRILOBITE TESTING, INC**

## DRILL STEM TEST REPORT

Raydon Exploration, Inc  
 1601 NW Expressway  
 Ste. #1300  
 Oklahoma City, OK 73118  
 ATTN: Ed Grieves / Jeff Qu

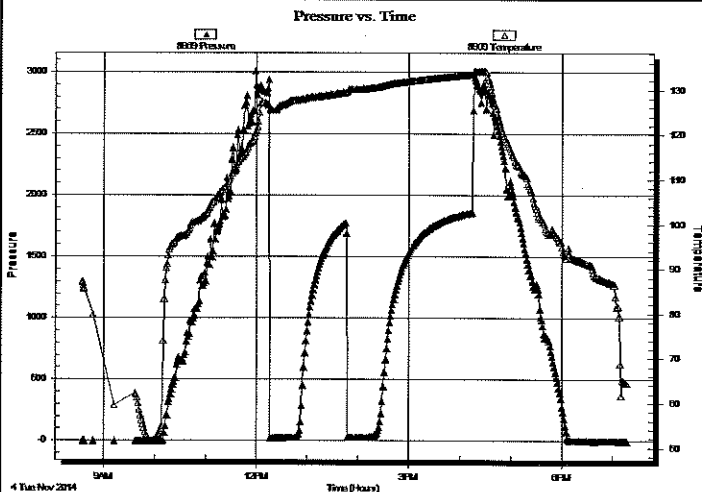
**34-33s-31w Seward, KS**  
**Parity #2-34**  
 Job Ticket: 56576      DST#: 5  
 Test Start: 2014.11.04 @ 08:35:00

**GENERAL INFORMATION:**

Formation: <b>St. Louis</b>		Test Type: Conventional Bottom Hole (Reset)
Deviated: No Whipstock:                      ft (KB)		Tester: Cornelio Landa III
Time Tool Opened: 12:15:00		Unit No: 67
Time Test Ended: 19:16:30		
<b>Interval: 6120.00 ft (KB) To 6140.00 ft (KB) (TVD)</b>		Reference Elevations: 2750.00 ft (KB)
Total Depth: 6140.00 ft (KB) (TVD)		2740.00 ft (CF)
Hole Diameter: 7.88 inches Hole Condition: Good		KB to GR/CF: 10.00 ft

<b>Serial #: 8969</b>	<b>Inside</b>			Capacity: 8000.00 psig
Press@RunDepth:                      psig @ 6123.00 ft (KB)		Start Date: 2014.11.04	End Date: 2014.11.04	Last Calib.: 2014.11.04
Start Time: 08:35:05	End Time: 19:16:45			Time On Btm:
				Time Off Btm:

TEST COMMENT: IF: Weak surface blow -Built to 1/8 in blow -Died in 26 min. into open  
 IS: No return  
 FF: Weak surface blow after 15 min. open -Died 5 min. after blow -Died in total of 20 min. into open  
 FS: No return

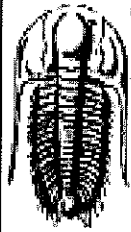


PRESSURE SUMMARY			
Time (Min.)	Pressure (psig)	Temp (deg F)	Annotation

Recovery		
Length (ft)	Description	Volume (bbl)
5.00	Mud w / oil spots	0.02

Gas Rates			
Choke (Inches)	Pressure (psig)	Gas Rate (Mcf/d)	

\* Recovery from multiple tests



**TRILOBITE  
TESTING, INC**

# DRILL STEM TEST REPORT

TOOL DIAGRAM

Raydon Exploration, Inc

34-33s-31w Seward,KS

1601 NW Expressway  
Ste. #1300  
Oklahoma City, OK 73118  
ATTN: Ed Grieves / Jeff Qu

Parity #2-34

Job Ticket: 56576

DST#: 5

Test Start: 2014.11.04 @ 08:35:00

## Tool Information

Drill Pipe:	Length: 5946.00 ft	Diameter: 3.80 inches	Volume: 83.41 bbl	Tool Weight: 2500.00 lb
Heavy Wt. Pipe:	Length: 0.00 ft	Diameter: 0.00 inches	Volume: 0.00 bbl	Weight set on Packer: 28000.00 lb
Drill Collar:	Length: 180.00 ft	Diameter: 2.25 inches	Volume: 0.89 bbl	Weight to Pull Loose: 10000.00 lb
			<u>Total Volume: 84.30 bbl</u>	Tool Chased 0.00 ft
Drill Pipe Above KB:	33.00 ft			String Weight: Initial 86000.00 lb
Depth to Top Packer:	6120.00 ft			Final 86000.00 lb
Depth to Bottom Packer:	ft			
Interval between Packers:	20.00 ft			
Tool Length:	47.00 ft			
Number of Packers:	2	Diameter: 6.75 inches		

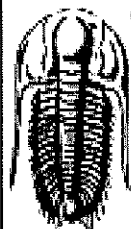
Tool Comments:

## Tool Description

Tool Description	Length (ft)	Serial No.	Position	Depth (ft)	Accum. Lengths
Change Over Sub	1.00			6094.00	
Shut In Tool	5.00			6099.00	
Hydraulic tool	5.00			6104.00	
Jars	5.00			6109.00	
Safety Joint	2.00			6111.00	
Packer	5.00			6116.00	27.00 Bottom Of Top Packer
Packer	4.00			6120.00	
Stubb	1.00			6121.00	
Perforations	2.00			6123.00	
Recorder	0.00	8969	Inside	6123.00	
Recorder	0.00	8968	Outside	6123.00	
Perforations	14.00			6137.00	
Bullnose	3.00			6140.00	20.00 Bottom Packers & Anchor

**Total Tool Length: 47.00**





**TRILOBITE  
TESTING, INC.**

## DRILL STEM TEST REPORT

**FLUID SUMMARY**

Raydon Exploration, Inc  
1601 NW Expressway  
Ste. #1300  
Oklahoma City, OK 73118  
ATTN: Ed Grieves / Jeff Qu

**34-33s-31w Seward,KS**  
**Parity #2-34**  
Job Ticket: 56576      **DST#: 5**  
Test Start: 2014.11.04 @ 08:35:00

### Mud and Cushion Information

Mud Type: Gel Chem  
Mud Weight: 9.00 lb/gal  
Viscosity: 57.00 sec/qt  
Water Loss: 6.39 in<sup>3</sup>  
Resistivity: 0.00 ohm.m  
Salinity: 1600.00 ppm  
Filter Cake: 1.00 inches

Cushion Type:  
Cushion Length: ft  
Cushion Volume: bbl  
Gas Cushion Type:  
Gas Cushion Pressure: psig

Oil API: deg API  
Water Salinity: ppm

### Recovery Information

Recovery Table

Length ft	Description	Volume bbl
5.00	Mud w / oil spots	0.025

Total Length: 5.00 ft      Total Volume: 0.025 bbl

Num Fluid Samples: 0      Num Gas Bombs: 0      Serial #:

Laboratory Name:      Laboratory Location:

Recovery Comments:

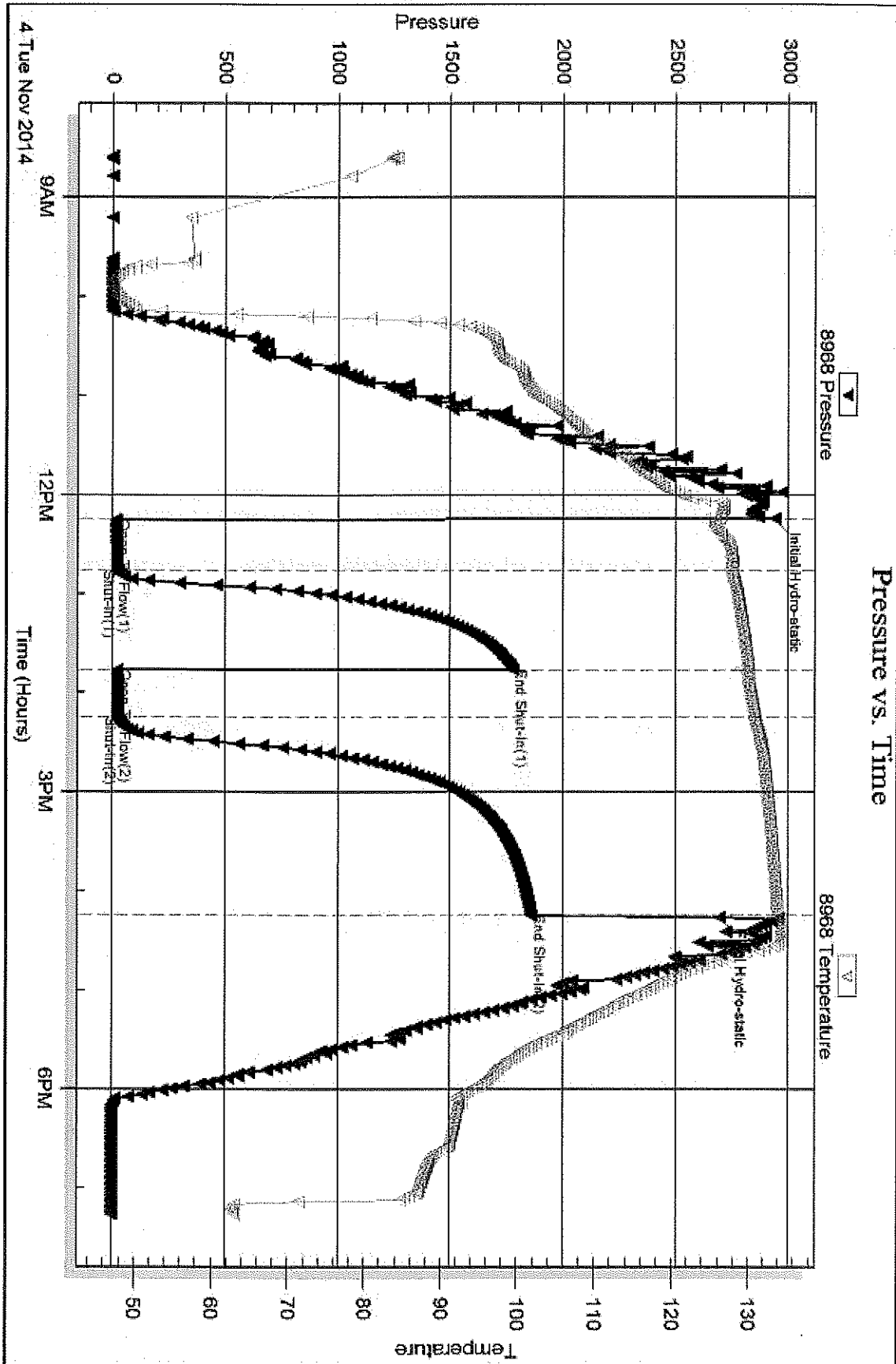
Serial #: 8968

Outside Raydon Exploration, Inc

Parity #2-34

DST Test Number: 5

### Pressure vs. Time



TriKoble Testing, Inc

Ref. No: 56576

Printed: 2014.11.10 @ 14:44:51

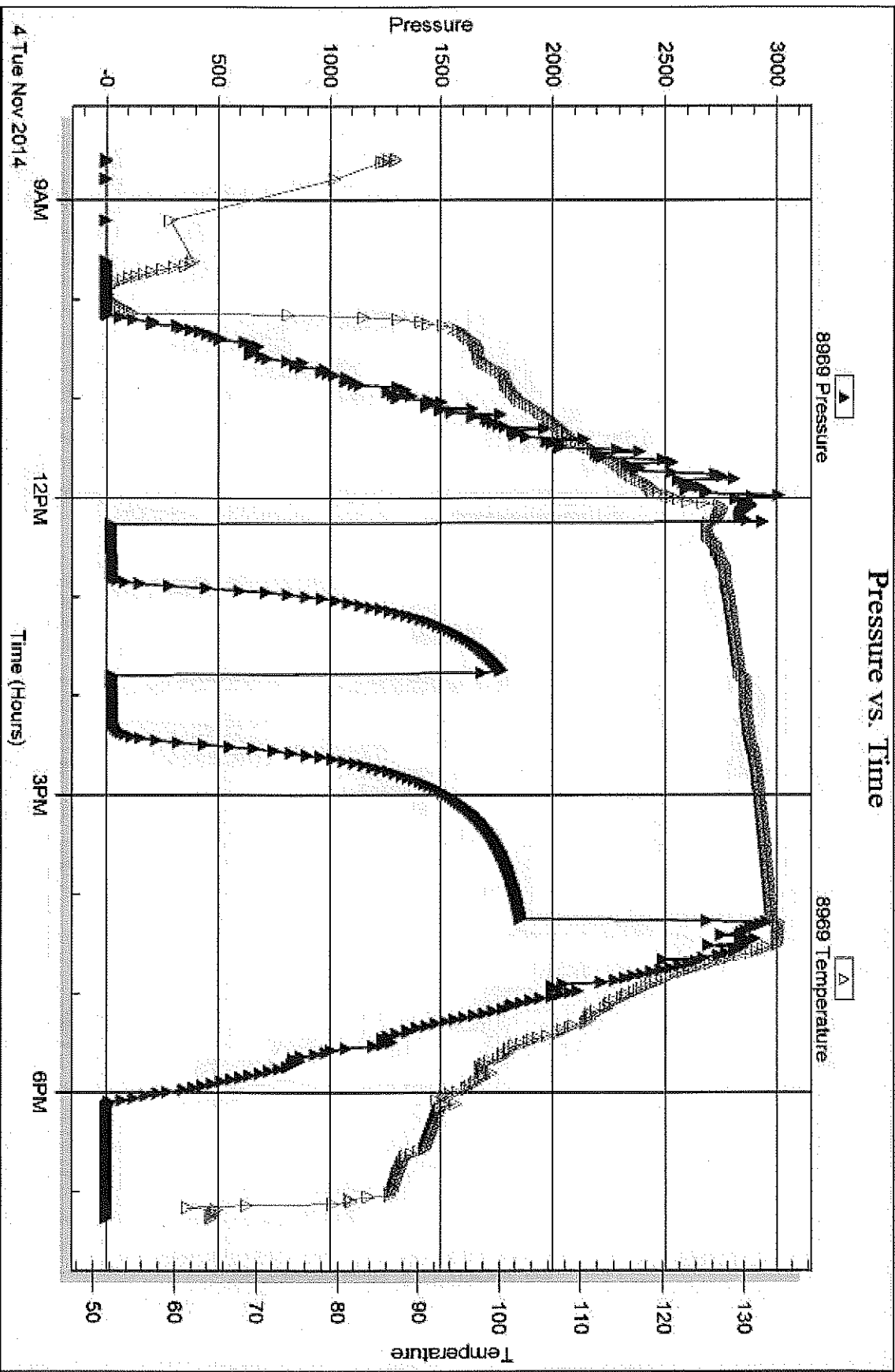
Serial #: 8969

Inside

Raydon Exploration, Inc

Party #2-34

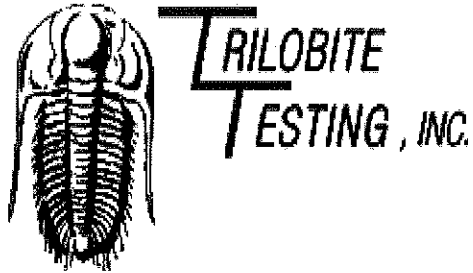
DST Test Number: 5



Tribble Testing, Inc

Ref. No: 56576

Printed: 2014.11.10 @ 14:44:51



## DRILL STEM TEST REPORT

Prepared For: **Raydon Exploration, Inc**

1601 NW Expressway  
Ste. #1300  
Oklahoma City, OK 73118

ATTN: Ed Grieves / Jeff Qu

### **Parity #2-34**

### **34-33s-31w Seward, KS**

Start Date: 2014.11.05 @ 10:03:00

End Date: 2014.11.05 @ 21:41:45

Job Ticket #: 56577      DST #: 6

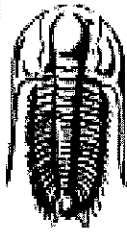
Trilobite Testing, Inc

1515 Commerce Parkway Hays, KS 67601

ph: 785-625-4778 fax: 785-625-5620

Printed: 2014.11.10 @ 14:24:26

Raydon Exploration, Inc  
34-33s-31w Seward, KS  
Parity #2-34  
DST # 6  
2nd St. Louis Peroci  
2014.11.05



**TRILOBITE  
TESTING, INC**

## DRILL STEM TEST REPORT

Raydon Exploration, Inc  
1601 NW Expressway  
Ste. #1300  
Oklahoma City, OK 73118  
ATTN: Ed Grieves / Jeff Qu

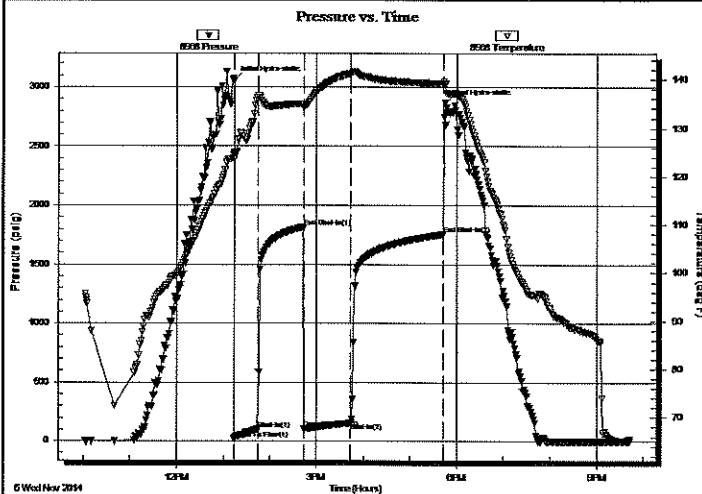
**34-33s-31w Seward, KS**  
**Parity #2-34**  
Job Ticket: 56577      **DST#: 6**  
Test Start: 2014.11.05 @ 10:03:00

### GENERAL INFORMATION:

Formation: **2nd St. Louis Peroci**  
Deviated: No      Whipstock:      ft (KB)  
Time Tool Opened: 13:13:45  
Time Test Ended: 21:41:45  
Test Type: Conventional Bottom Hole (Reset)  
Tester: Cornelio Landa III  
Unit No: 67  
Interval: **6145.00 ft (KB) To 6175.00 ft (KB) (TVD)**  
Reference Elevations: 2750.00 ft (KB)  
Total Depth: 6175.00 ft (KB) (TVD)      2740.00 ft (CF)  
Hole Diameter: 7.88 inches      Hole Condition: Good      KB to GR/CF: 10.00 ft

**Serial #: 8968      Outside**  
Press@RunDepth: 153.28 psig @ 6148.00 ft (KB)      Capacity: 8000.00 psig  
Start Date: 2014.11.05      End Date: 2014.11.05      Last Calib.: 2014.11.05  
Start Time: 10:03:05      End Time: 21:41:45      Time On Btm: 2014.11.05 @ 13:13:30  
Time Off Btm: 2014.11.05 @ 17:45:15

**TEST COMMENT:** IF: Weak surface blow - Built to 2 1/2 in. of blow  
IS: No return  
FF: Weak surface blo - Built to 2 1/2 in. of blow  
FSI: No return



### PRESSURE SUMMARY

Time (Min.)	Pressure (psig)	Temp (deg F)	Annotation
0	3054.97	124.81	Initial Hydro-static
1	18.76	123.54	Open To Flow (1)
31	102.11	136.30	Shut-In(1)
90	1814.64	134.90	End Shut-In(1)
91	105.42	134.06	Open To Flow (2)
151	153.28	141.24	Shut-In(2)
270	1754.75	139.24	End Shut-In(2)
272	2864.98	139.31	Final Hydro-static

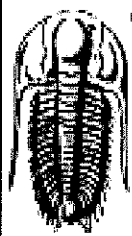
### Recovery

Length (ft)	Description	Volume (bbl)
180.00	Mcw 11m 89w	0.89
126.00	Mud 100m	1.77

\* Recovery from multiple tests

### Gas Rates

Choke (inches)	Pressure (psig)	Gas Rate (Mcf/d)



**TRILOBITE TESTING, INC.**

## DRILL STEM TEST REPORT

Raydon Exploration, Inc  
 1601 NW Expressway  
 Ste. #1300  
 Oklahoma City, OK 73118  
 ATTN: Ed Grieves / Jeff Qu

34-33s-31w Seward, KS

Parity #2-34

Job Ticket: 56577

DST#: 6

Test Start: 2014.11.05 @ 10:03:00

### GENERAL INFORMATION:

Formation: **2nd St. Louis Peroci**

Deviated: No Whipstock: ft (KB)

Time Tool Opened: 13:13:45

Time Test Ended: 21:41:45

Test Type: Conventional Bottom Hole (Reset)

Tester: Cornelio Landa III

Unit No: 67

Interval: **6145.00 ft (KB) To 6175.00 ft (KB) (TVD)**

Total Depth: 6175.00 ft (KB) (TVD)

Hole Diameter: 7.88 inches Hole Condition: Good

Reference Elevations: 2750.00 ft (KB)

2740.00 ft (CF)

KB to GR/CF: 10.00 ft

**Serial #: 8969** Inside

Press@RunDepth: psig @ 6148.00 ft (KB)

Start Date: 2014.11.05

End Date:

2014.11.05

Capacity: 8000.00 psig

Last Calib.:

2014.11.05

Start Time: 10:03:05

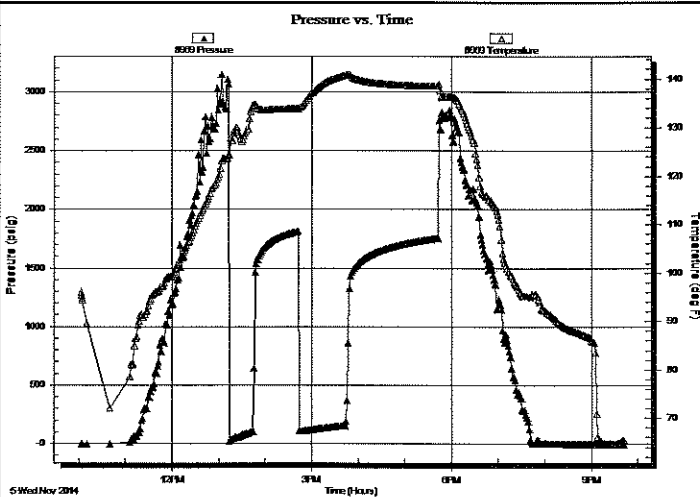
End Time:

21:41:45

Time On Btm:

Time Off Btm:

TEST COMMENT: IF: Weak surface blow -Built to 2 1/2 in. of blow  
 IS: No return  
 FF: Weak surface blo-Built to 2 1/2 in. of blow  
 FS: No return



### PRESSURE SUMMARY

Time (Min.)	Pressure (psig)	Temp (deg F)	Annotation

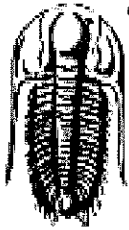
### Recovery

Length (ft)	Description	Volume (bbl)
180.00	Mcw 11m 89w	0.89
126.00	Mud 100m	1.77

\* Recovery from multiple tests

### Gas Rates

Choke (inches)	Pressure (psig)	Gas Rate (Mcf/d)



**TRILOBITE  
TESTING, INC**

## DRILL STEM TEST REPORT

**TOOL DIAGRAM**

Raydon Exploration, Inc  
1601 NW Expressway  
Ste. #1300  
Oklahoma City, OK 73118  
ATTN: Ed Grieves / Jeff Qu

**34-33s-31w Seward, KS**  
**Parity #2-34**  
Job Ticket: 56577      **DST#: 6**  
Test Start: 2014.11.05 @ 10:03:00

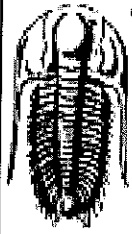
### Tool Information

Drill Pipe:	Length: 5947.00 ft	Diameter: 3.80 inches	Volume: 83.42 bbl	Tool Weight: 2500.00 lb
Heavy Wt. Pipe:	Length: 0.00 ft	Diameter: 0.00 inches	Volume: 0.00 bbl	Weight set on Packer: 28000.00 lb
Drill Collar:	Length: 180.00 ft	Diameter: 2.25 inches	Volume: 0.89 bbl	Weight to Pull Loose: 18000.00 lb
		<b>Total Volume:</b>	<b>84.31 bbl</b>	Tool Chased 0.00 ft
Drill Pipe Above KB:	9.00 ft			String Weight: Initial 82000.00 lb
Depth to Top Packer:	6145.00 ft			Final 82000.00 lb
Depth to Bottom Packer:	ft			
Interval between Packers:	30.00 ft			
Tool Length:	57.00 ft			
Number of Packers:	2	Diameter: 6.75 inches		

Tool Comments:

Tool Description	Length (ft)	Serial No.	Position	Depth (ft)	Accum. Lengths
Change Over Sub	1.00			6119.00	
Shut In Tool	5.00			6124.00	
Hydraulic tool	5.00			6129.00	
Jars	5.00			6134.00	
Safety Joint	2.00			6136.00	
Packer	5.00			6141.00	27.00      Bottom Of Top Packer
Packer	4.00			6145.00	
Stubb	1.00			6146.00	
Perforations	2.00			6148.00	
Recorder	0.00	8969	Inside	6148.00	
Recorder	0.00	8968	Outside	6148.00	
Perforations	24.00			6172.00	
Bullnose	3.00			6175.00	30.00      Bottom Packers & Anchor

**Total Tool Length: 57.00**



**TRILOBITE  
TESTING, INC**

# DRILL STEM TEST REPORT

**FLUID SUMMARY**

Raydon Exploration, Inc

**34-33s-31w Seward, KS**

1601 NW Expressway  
Ste. #1300  
Oklahoma City, OK 73118  
ATTN: Ed Grieves / Jeff Qu

**Parity #2-34**

Job Ticket: 56577

**DST#: 6**

Test Start: 2014.11.05 @ 10:03:00

## Mud and Cushion Information

Mud Type: Gel Chem  
Mud Weight: 9.00 lb/gal  
Viscosity: 63.00 sec/qt  
Water Loss: 6.00 in<sup>3</sup>  
Resistivity: 0.00 ohm.m  
Salinity: 1900.00 ppm  
Filter Cake: 1.00 inches

Cushion Type:  
Cushion Length: ft  
Cushion Volume: bbl  
Gas Cushion Type:  
Gas Cushion Pressure: psig

Oil API: deg API  
Water Salinity: 11000 ppm

## Recovery Information

Recovery Table

Length ft	Description	Volume bbl
180.00	Mcw 11m 89w	0.885
126.00	Mud 100m	1.767

Total Length: 306.00 ft      Total Volume: 2.652 bbl

Num Fluid Samples: 0      Num Gas Bombs: 0      Serial #:

Laboratory Name:      Laboratory Location:

Recovery Comments: RW.720 @ 55.5=11,000

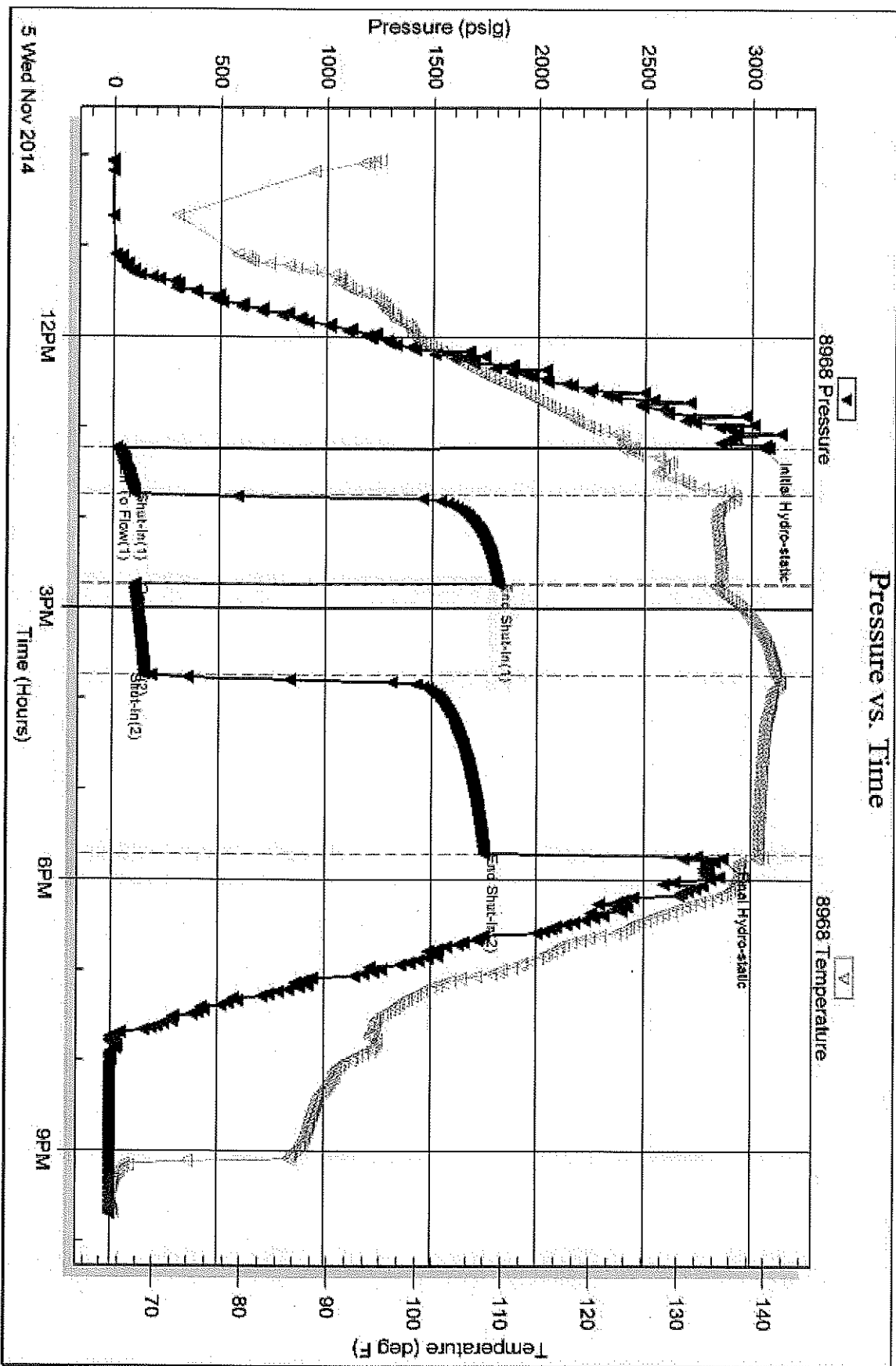


Serial #: 8968

Outside Raydon Exploration, Inc

Party #2-34

DSI Test Number: 6



Triobolite Testing, Inc

Ref. No: 56577

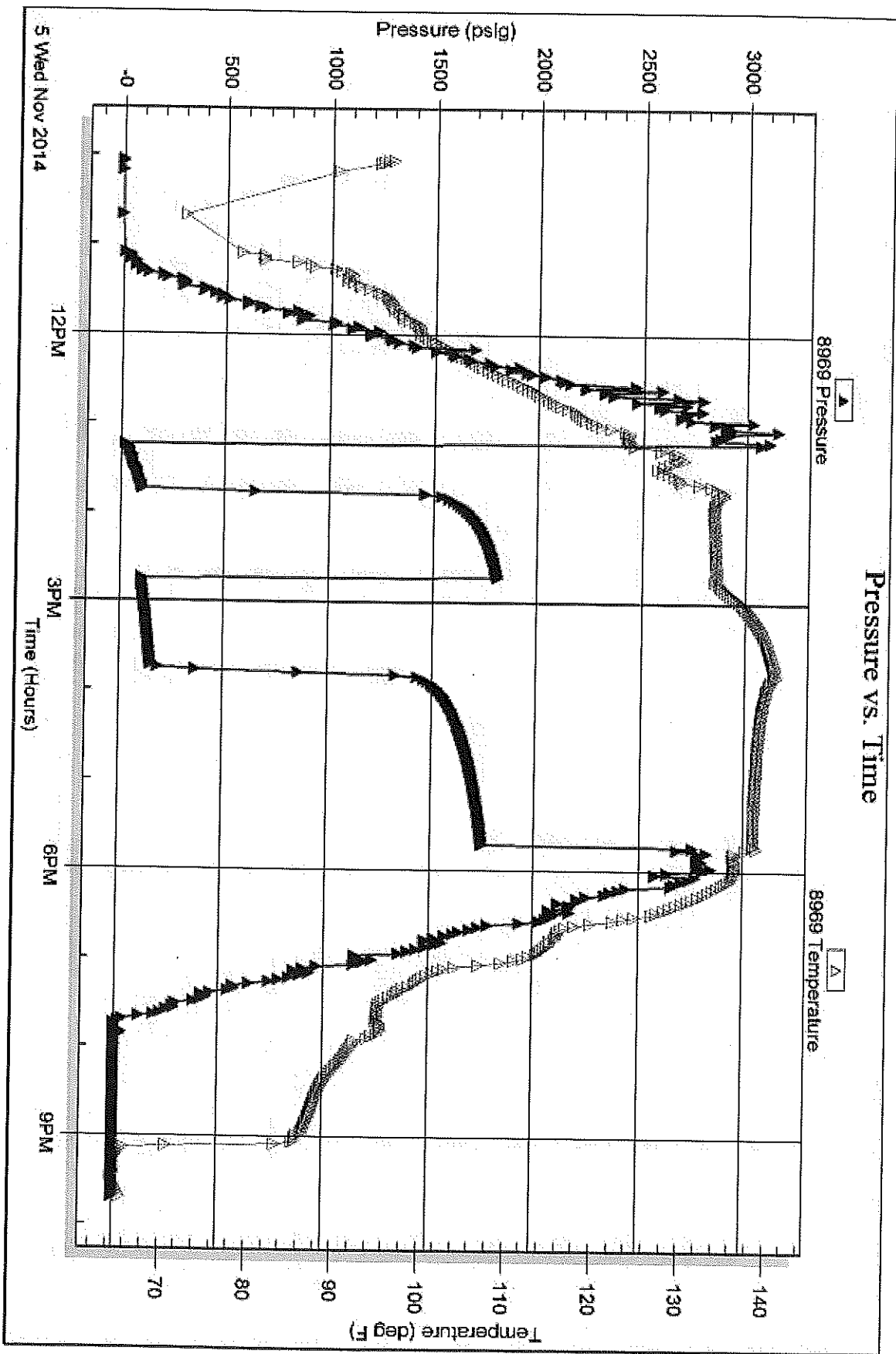
Printed: 2014.11.10 @ 14:24:28

Serial #: 8969

Inside Raydon Exploration, Inc

Parity #2-34

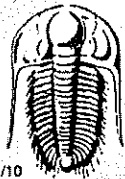
DST Test Number: 6



Tribble Testing, Inc

Ref. No: 56577

Printed: 2014.11.10 @ 14:24:28



# TRILOBITE TESTING INC.

1515 Commerce Parkway • Hays, Kansas 67601

## Test Ticket

NO. 56572

Well Name & No. Party # 2-34 Test No. 1 Date 10-24-14  
 Company Raydon Exploration, Inc. Elevation 2750 KB 2740 GL  
 Address 1601 NW Expressway, Ste. # 1300 - Oklahoma City, OK 73118  
 Co. Rep / Geo. Ed Grieves / Jeff Quimby Rig Tomcat #4  
 Location: Sec. 34 Twp. 33-S Rge. 3E-W Co. ~~Woods~~ Seward State KS

Interval Tested 4466-4480 Zone Tested Lansing 'A'  
 Anchor Length 14' Drill Pipe Run 4285 Mud Wt. 8.8  
 Top Packer Depth 4462 Drill Collars Run 180 Vis 4.5  
 Bottom Packer Depth 4466 Wt. Pipe Run 0 WL 9.5  
 Total Depth 4480 Chlorides 2,000 ppm System LCM #5

Blow Description IF: Weak surface blow - Dried in 20 min.

ISI: No Return  
FF: No Blow  
FSI: No Return

Rec	Feet of	%gas	%oil	%water	%mud
Rec	Feet of	%gas	%oil	%water	%mud
Rec <u>10</u>	Feet of <u>Mud</u>	%gas	%oil	%water	<u>100%</u> mud
Rec	Feet of	%gas	%oil	%water	%mud
Rec	Feet of	%gas	%oil	%water	%mud

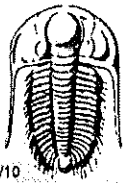
Rec Total 10 BHT 115 Gravity — API RW — @ — ° F Chlorides — ppm

(A) Initial Hydrostatic	<u>2151</u>	<input checked="" type="checkbox"/> Test	<u>1250</u>	T-On Location	<u>18:20</u>
(B) First Initial Flow	<u>16</u>	<input checked="" type="checkbox"/> Jars	<u>250</u>	T-Started	<u>18:27</u>
(C) First Final Flow	<u>23</u>	<input checked="" type="checkbox"/> Safety Joint	<u>75</u>	T-Open	<u>00:39</u>
(D) Initial Shut-In	<u>1220</u>	<input checked="" type="checkbox"/> Circ Sub	<u>N/C 2.25h 225</u>	T-Pulled	<u>05:04</u>
(E) Second Initial Flow	<u>26</u>	<input checked="" type="checkbox"/> Hourly Standby	<u>over time allotted for test 3 hrs</u>	T-Out	<u>07:43</u>
(F) Second Final Flow	<u>30</u>	<input checked="" type="checkbox"/> Mileage	<u>112 R-T</u>	Comments	<u>Time On Bank @ 19:30</u>
(G) Final Shut-In	<u>996</u>	<input type="checkbox"/> Sampler	<u>100rt 155</u>		<u>per office when called out!!</u>
(H) Final Hydrostatic	<u>2141</u>	<input type="checkbox"/> Straddle			<u>3 hrs over allotted time</u>

Initial Open	<u>30</u>	<input checked="" type="checkbox"/> Shale Packer	<u>250</u>	<input type="checkbox"/> Ruined Shale Packer	
Initial Shut-In	<u>60</u>	<input type="checkbox"/> Extra Packer		<input type="checkbox"/> Ruined Packer	
Final Flow	<u>60</u>	<input type="checkbox"/> Extra Recorder		<input type="checkbox"/> Extra Copies	
Final Shut-In	<u>120</u>	<input type="checkbox"/> Day Standby		Sub Total	<u>0</u>
		<input checked="" type="checkbox"/> Accessibility	<u>No Steps From 150</u>	Total	<u>2355.00</u>
		Sub Total	<u>Catwalk to Rig floor</u>	MP/DST Disc't	

Approved By [Signature] Our Representative [Signature]

Trilobite Testing Inc. shall not be liable for damaged of any kind of the property or personnel of the one for whom a test is made, or for any loss suffered or sustained, directly or indirectly, through the use of its equipment, or its statements or opinion concerning the results of any test, tools lost or damaged in the hole shall be paid for at cost by the party for whom the test is made.



# TRILOBITE TESTING INC.

1515 Commerce Parkway • Hays, Kansas 67601

## Test Ticket

NO. 56573

Well Name & No. Parity #2-34 Test No. 2 Date 10-27-14  
 Company Rayden Exploration, Inc. Elevation 2750 KB 2740 GL  
 Address 1601 NW Expressway Ste #1300 - Oklahoma City, OK 73118  
 Co. Rep / Geo. Ed Grives / Jeff Quimby Rig Tomcat #4  
 Location: Sec. 34 Twp. 33-S Rge. 8W Co. Seward State Ks

Interval Tested 5124-5147 Zone Tested Upper Marmaton  
 Anchor Length 23' Drill Pipe Run 4949 Mud Wt. 8.9  
 Top Packer Depth 5120 Drill Collars Run 180' Vis 53  
 Bottom Packer Depth 5124 Wt. Pipe Run 9 WL 7.2  
 Total Depth 5147 Chlorides 2500 ppm System LCM #7

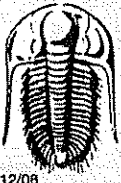
Blow Description IF: Bob. in 30 seconds  
PSI: Bled off in 4min - 4in Blowback Return  
FF: Bob. in 30 seconds - G.T.S. in 20 min. - Gauged Gas - Took Sample - Look at Gas Rates  
PSI: Bled off in 10min - 4 1/2 in of Return Blowback -

Rec	Feet of	%gas	%oil	%water	%mud
180	OCW EM	45	15	36	60
63	OCM G	45	15	%water	40
63	COCG	35	65	%water	%mud
31	CGO	10	70	%water	%mud
Rec	Feet of	%gas	%oil	%water	%mud

Rec Total 337 BHT 123 Gravity 39 API RW 178 @ 49.5° F Chlorides 62,000 ppm  
 (A) Initial Hydrostatic 2517  Test 1350 T-On Location 20:55  
 (B) First Initial Flow 47  Jars 250 T-Started 20:58  
 (C) First Final Flow 73  Safety Joint 75 T-Open 01:42  
 (D) Initial Shut-In 1330  Circ Sub MC T-Pulled 06:12  
 (E) Second Initial Flow 77  Hourly Standby 2hrs over allotted T-Out 09:58  
 (F) Second Final Flow 129  Mileage 112 R-T time 155 Comments Did Light Wand  
 (G) Final Shut-In 1320  Sampler \_\_\_\_\_  
 (H) Final Hydrostatic 2506  Straddle \_\_\_\_\_

Initial Open 30  Shale Packer 250  Ruined Shale Packer \_\_\_\_\_  
 Initial Shut-In 60  Extra Packer 2d 13.25h  Ruined Packer \_\_\_\_\_  
 Final Flow 60  Extra Recorder 37hr since last test  Extra Copies \_\_\_\_\_  
 Final Shut-In 120  Day Standby last test 10/25/14 Sub Total 1241.67  
 Accessibility last test 10/25/14 Total 3721.67  
 Sub Total 07:43am MP/DST Disc't \_\_\_\_\_

Approved By [Signature] 2480 Our Representative [Signature]  
 Trilobite Testing Inc. shall not be liable for damaged of any kind of the property or personnel of the one for whom a test is made, or for any loss suffered or sustained, directly or indirectly, through the use of its equipment, or its statements or opinion concerning the results of any test, tools lost or damaged in the hole shall be paid for at cost by the party for whom the test is made.



# TRILOBITE TESTING INC.

P.O. Box 1733 • Hays, Kansas 67601

## Gas Volume Report

12/08

Raydon Exploration, Inc

Parity #2-34

2

Operator  
1st open

Well Name and No.  
2nd open

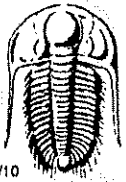
.442

DST No.

.6325

Min.	Ins. of Water PSIG	Orifice Size	CF/D	Min.	Ins. of Water PSIG	Orifice Size	Book MCF/D	ATMS
				20	2 1/2	.125	4.42	6.325
				30	3	.125	4.84	6.513
				40	3 1/2	.125	5.26	6.700
				50	3 1/2	.125	5.26	6.700
				60	3 1/2	.125	5.26	6.700
							.526	.670
							Did Light	
							Wand A Bright	
							Orange w/ a little	
							Blue!!	

Remarks:



# TRILOBITE TESTING INC.

1515 Commerce Parkway • Hays, Kansas 67601

## Test Ticket

NO. 56574

Well Name & No. Parity #2-34 Test No. 3 Date 10-29-14  
 Company Raydon Exploration, Inc. Elevation 2750 KB 2740 GL  
 Address 1601 NW Expressway Ste #1300 - Oklahoma City, OK 73118  
 Co. Rep / Geo. Jeff Quimby Rig Tomcat #4  
 Location: Sec. 34 Twp. 33-5 Rge. 36W Co. Seward State KS

Interval Tested 5153-5168 Zone Tested Marmaton  
 Anchor Length 15' Drill Pipe Run 4952' Mud Wt. 9.0  
 Top Packer Depth 5149 Drill Collars Run 180' Vis 53  
 Bottom Packer Depth 5153 Wt. Pipe Run Ø WL 4.8  
 Total Depth 5168 Chlorides 2700 ppm System LCM #8

Blow Description IF: B.o.b. in 16 min - GTS in 18 min - Too small to gauge - Got Sample  
ISF: Bled off in 3 1/2 min - No Return  
FF: Weak surface blow - Built to 3 in. Blow.

FSI: Bled off in 1 min - Weak surface blow back after 4 min. Shut in - Died in 10 min. into

Rec	Feet of	%gas	%oil	%water	%mud
<u>243</u>	<u>MCW</u>			<u>98</u>	<u>2</u>
<u>63</u>	<u>G+WCM</u>	<u>2</u>		<u>10</u>	<u>88</u>
<u>63</u>	<u>G+OCM</u>	<u>2</u>	<u>2</u>		<u>96</u>
	<u>G.T.S.</u>				

Rec Total 369 BHT 126 Gravity — API RW 280 @ 68.8° F Chlorides 25000 ppm

- (A) Initial Hydrostatic 2518
- (B) First Initial Flow 28
- (C) First Final Flow 106
- (D) Initial Shut-In 1560
- (E) Second Initial Flow 114
- (F) Second Final Flow 184
- (G) Final Shut-In 1559
- (H) Final Hydrostatic 2465

- Test 1350
- Jars 250
- Safety Joint 75
- Circ Sub M/C .5h 50
- Hourly Standby 1hr. over allotted Time
- Mileage 155
- Sampler
- Straddle
- Shale Packer 250
- Extra Packer
- Extra Recorder
- Day Standby
- Accessibility 150
- Sub Total 2280

- T-On Location 00:50
- T-Started 00:51
- T-Open 05:25
- T-Pulled 09:55
- T-Out 13:06

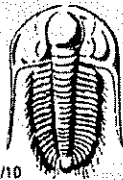
Comments Geo called with Time on Bank @ 01:30

Initial Open 30  
 Initial Shut-In 60  
 Final Flow 60  
 Final Shut-In 120

- Ruined Shale Packer
- Ruined Packer
- Extra Copies
- Sub Total 0
- Total 2280
- MP/DST Disc't

Approved By [Signature] Our Representative [Signature]

Trilobite Testing Inc. shall not be liable for damaged or any kind of the property or personnel of the one for whom a test is made, or for any loss suffered or sustained, directly or indirectly, through the use of its equipment, or its statements or opinion concerning the results of any test, tools lost or damaged in the hole shall be paid for at cost by the party for whom the test is made.



# TRILOBITE TESTING INC.

1515 Commerce Parkway • Hays, Kansas 67601

## Test Ticket

NO. 56575

Well Name & No. Parity 12-34 Test No. 4 Date 10-30-14  
 Company Raydon Exploration, Inc Elevation 2750 KB 2740 GL  
 Address 1601 NW Expressway Ste #1300 - Oklahoma City, OK 73118  
 Co. Rep / Geo. Jeff Quimby Rig Tomcat #4  
 Location: Sec. 34 Twp. 33-S Rge. 31-W Co. Seward State KS

Interval Tested 5202 - 5221 Zone Tested 3rd Marmaton Perocity  
 Anchor Length 19' Drill Pipe Run 5010' Mud Wt. 8.9  
 Top Packer Depth 5198 Drill Collars Run 180 Vis 58  
 Bottom Packer Depth 5202 Wt. Pipe Run Ø WL 60  
 Total Depth 5221 Chlorides 2700 ppm System LCM #8

Blow Description IF: B.O.B. in 1min. 15 seconds - slight ems odor - Wand did NOT Lite  
ISI: Bled off 2min - NO Return  
FF: B.O.B. in 10 seconds -  
FSI: Bled off in 2min - surface Blowback - Built to 1/2 in. of Blowback

DC	Rec	Feet of	%gas	%oil	%water	%mud
	<u>60</u>	<u>OCM &amp; G</u>	<u>50</u>	<u>15</u>		<u>35</u>
	<u>60</u>	<u>OCG &amp; m</u>	<u>30</u>	<u>10</u>		<u>60</u>
	<u>15</u>	<u>CGO</u>	<u>10</u>	<u>90</u>		
<u>UP</u>		<u>GIP = 1512</u>				

Rec Total 135 BHT 122 Gravity 38 API RW — @ — ° F Chlorides — ppm

(A) Initial Hydrostatic 2497  Test 1350 T-On Location 04:18  
 (B) First Initial Flow 28  Jars 250 T-Started 04:19  
 (C) First Final Flow 39  Safety Joint 75 T-Open 07:51  
 (D) Initial Shut-In 944  Circ Sub MC T-Pulled 12:21  
 (E) Second Initial Flow 33  Hourly Standby \_\_\_\_\_ T-Out 15:05  
 (F) Second Final Flow 70  Mileage 112 R-T 155 Comments \_\_\_\_\_  
 (G) Final Shut-In 1075  Sampler \_\_\_\_\_  
 (H) Final Hydrostatic 2430  Straddle \_\_\_\_\_  Ruined Shale Packer \_\_\_\_\_  
 Shale Packer 250  Ruined Packer \_\_\_\_\_  
 Extra Packer \_\_\_\_\_  Extra Copies \_\_\_\_\_  
 Extra Recorder \_\_\_\_\_ Sub Total 0  
 Day Standby \_\_\_\_\_ Total 2230  
 Accessibility 150 MP/DST Disc't \_\_\_\_\_  
 Sub Total 2230

Initial Open 30  
 Initial Shut-In 60  
 Final Flow 60  
 Final Shut-In 120

Approved By [Signature] Our Representative [Signature]

Trilobite Testing Inc. shall not be liable for damaged of any kind of the property or personnel of the one for whom a test is made, or for any loss suffered or sustained, directly or indirectly, through the use of its equipment, or its statements or opinion concerning the results of any test, tools lost or damaged in the hole shall be paid for at cost by the party for whom the test is made.



# TRILOBITE TESTING INC.

1515 Commerce Parkway • Hays, Kansas 67601

## Test Ticket

NO. 56576

Well Name & No. Party # 2-34 Test No. 5 Date 11-4-14  
 Company Raydon Exploration, Inc. Elevation 2750 KB 2740 GL  
 Address 1601 NW Expressway Ste #1300 - Oklahoma City, OK 73118  
 Co. Rep / Geo. Jeff Quinby Rig Tamcat #4  
 Location: Sec. 34 Twp. 33-5 Rge. 31-W Co. Seward State KS

Interval Tested 6120-6140 Zone Tested St Louis  
 Anchor Length 20' Drill Pipe Run 5946' Mud Wt. 9.0  
 Top Packer Depth 6116 Drill Collars Run 180 Vis 57  
 Bottom Packer Depth 6120 Wt. Pipe Run Ø WL 6.4  
 Total Depth 6140 Chlorides 11600 ppm System LCM #5 spotted pill

Blow Description IF: Weak surface blow - Built to 1/2 in blow - Dried in 26 min. in to open  
ISF: NO Return  
FF: Weak surface blow after 15 min. open - Dried 5 min. after blow - 20 min total time  
FSF: NO Return

Rec	Feet of	%gas	%oil	%water	%mud
Rec	Feet of	%gas	%oil	%water	%mud
Rec <u>5'</u>	Feet of <u>Mud w/ oil spots</u>	%gas	%oil	%water <u>100</u>	%mud
Rec	Feet of	%gas	%oil	%water	%mud
Rec	Feet of	%gas	%oil	%water	%mud

Rec Total 5' BHT 134 Gravity API RW @ °F Chlorides ppm  
 (A) Initial Hydrostatic 2936  Test 1450 T-On Location 08:30  
 (B) First Initial Flow 17  Jars 250 T-Started 08:35  
 (C) First Final Flow 22  Safety Joint 75 T-Open 12:13  
 (D) Initial Shut-In 1780  Circ Sub N/C T-Pulled 16:13  
 (E) Second Initial Flow 24  Hourly Standby 17 1/2 hrs standby T-Out 19:16  
 (F) Second Final Flow 27  Mileage 89.5 hrs since last test Comments total standby 15 89 1/2  
 (G) Final Shut-In 1860  Sampler 155 has since last test on  
 (H) Final Hydrostatic 2691  Straddle 10-30-14

Ruined Shale Packer  
 Ruined Packer  
 Extra Copies  
 Initial Open 30  Shale Packer 250  
 Initial Shut-In 60  Extra Packer  
 Final Flow 30  Extra Recorder 4d 17.5h Sub Total 2983.33  
 Final Shut-In 120  Day Standby last test 10-30 @ 15:05 Total 5313.33  
 Accessibility 3 days standby 150 MP/DST Disc't  
 Sub Total 2330

Approved By [Signature] Our Representative [Signature]

Trilobite Testing Inc. shall not be liable for damaged of any kind of the property or personnel of the one for whom a test is made, or for any loss suffered or sustained, directly or indirectly, through the use of its equipment, or its statements or opinion concerning the results of any test, tools lost or damaged in the hole shall be paid for at cost by the party for whom the test is made.





# TRILOBITE TESTING INC.

1515 Commerce Parkway • Hays, Kansas 67601

## Test Ticket

NO. 56577

Well Name & No. Parity # 2-34 Test No. 6 Date 11-5-14  
 Company Raydon Exploration, Inc. Elevation 2750 KB 2740 GL  
 Address 1601 NW Expressway Ste #1300 - Oklahoma City, OK 73118  
 Co. Rep / Geo. Jeff Quimby Rig Tomcat #4  
 Location: Sec. \_\_\_\_\_ Twp. \_\_\_\_\_ Rge. \_\_\_\_\_ Co. \_\_\_\_\_ State \_\_\_\_\_

Interval Tested 6145- 6175 Zone Tested 2nd St Louis Perosity  
 Anchor Length 30' Drill Pipe Run ~~5947~~ 5947 Mud Wt. 8.9  
 Top Packer Depth 6141 Drill Collars Run 180 Vis 63  
 Bottom Packer Depth 6145 Wt. Pipe Run Ø WL 6.0  
 Total Depth 6175 Chlorides 1900 ppm System LCM #16 Spotted pill down hole  
 Blow Description IF: Weak surface blow - Built to 2 1/2 in. blow  
ESI: No Return  
FF: Weak surface blow - Built to 2 1/2 in. of Blow  
FSI No Return

Rec	Feet of	%gas	%oil	%water	%mud
180	mcw		89	11	
126	mud			100	

Rec Total 306 BHT 139 Gravity \_\_\_\_\_ API RW .720 @ 55.5° F Chlorides 11,000 ppm  
 (A) Initial Hydrostatic 3055  Test 1450 T-On Location 10:00  
 (B) First Initial Flow 19  Jars 250 T-Started ~~10:03~~ 10:03  
 (C) First Final Flow 102  Safety Joint 75 T-Open 13:14  
 (D) Initial Shut-In 1815  Circ Sub N/C T-Pulled 17:44  
 (E) Second Initial Flow 105  Hourly Standby 1hr over allotted time T-Out 21:41  
 (F) Second Final Flow 153  Mileage 112 R-T 155 Comments \_\_\_\_\_  
 (G) Final Shut-In 1755  Sampler \_\_\_\_\_  
 (H) Final Hydrostatic 2865  Straddle \_\_\_\_\_  Ruined Shale Packer \_\_\_\_\_  
 Shale Packer 250  Ruined Packer \_\_\_\_\_  
 Extra Packer \_\_\_\_\_  Extra Copies \_\_\_\_\_  
 Initial Open 30  Extra Recorder \_\_\_\_\_ Sub Total 0  
 Initial Shut-In 60  Day Standby \_\_\_\_\_ Total 2330  
 Final Flow 60  Accessibility 150 MP/DST Disc't \_\_\_\_\_  
 Final Shut-In 120 Sub Total 2330

Approved By [Signature] Our Representative [Signature]

Trilobite Testing Inc. shall not be liable for damaged of any kind of the property or personnel of the one for whom a test is made, or for any loss suffered or sustained, directly or indirectly, through the use of its equipment, or its statements or opinion concerning the results of any test, tools lost or damaged in the hole shall be paid for at cost by the party for whom the test is made.