



TRILOBITE TESTING, INC.

DRILL STEM TEST REPORT

Shelby Resources L.L.C.
 445 Union Blvd Suite 208
 Lakewood, Colorado 80228
 ATTN: jeremy Schwartz

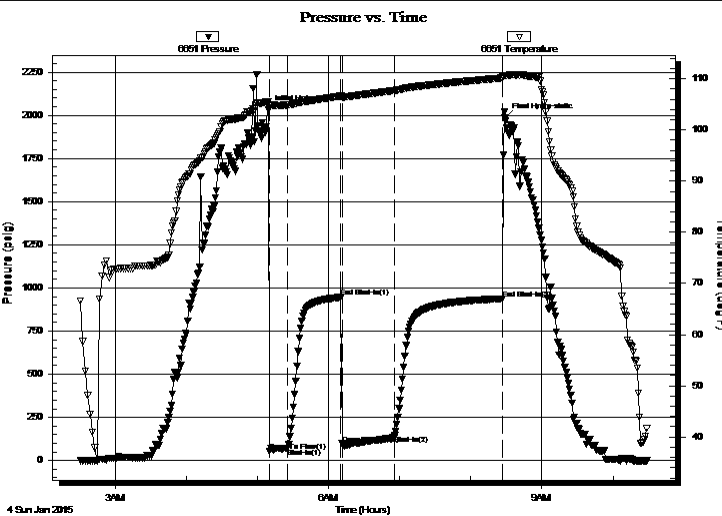
36-21s-16w Pawnee
WFY #1-36
 Job Ticket: 1 **DST#: 1**
 Test Start: 2015.01.04 @ 02:31:00

GENERAL INFORMATION:

Formation: **Conglomerate Sand**
 Deviated: No Whipstock: ft (KB)
 Time Tool Opened: 05:10:30
 Time Test Ended: 10:29:00
 Interval: **3762.00 ft (KB) To 3803.00 ft (KB) (TVD)**
 Total Depth: 3803.00 ft (KB) (TVD)
 Hole Diameter: 7.88 inches Hole Condition: Fair
 Test Type: Conventional Bottom Hole (Initial)
 Tester: Gene Budig
 Unit No: 60-42
 Reference Elevations: 1984.00 ft (KB)
 1972.00 ft (CF)
 KB to GR/CF: 12.00 ft

Serial #: 6651 Inside
 Press @ Run Depth: 146.26 psig @ 3798.00 ft (KB) Capacity: 8000.00 psig
 Start Date: 2015.01.04 End Date: 2015.01.04 Last Calib.: 2015.01.04
 Start Time: 02:31:00 End Time: 10:29:00 Time On Btm: 2015.01.04 @ 05:09:30
 Time Off Btm: 2015.01.04 @ 08:29:00

TEST COMMENT: 1st Opening 15 Minutes Fair blow bob in 1 1/2 minutes
 1st Shut-In 45 Minutes-No blow back
 2nd Opening 45 Minutes-Good blow bob in 1 minute gas in 32
 2nd Shut-In 90 Minutes-weak blow back



PRESSURE SUMMARY

Time (Min.)	Pressure (psig)	Temp (deg F)	Annotation
0	2030.80	105.50	Initial Hydro-static
1	52.80	104.88	Open To Flow (1)
16	71.82	104.86	Shut-In(1)
61	945.86	106.61	End Shut-In(1)
62	95.86	106.37	Open To Flow (2)
107	146.26	107.71	Shut-In(2)
197	937.63	110.13	End Shut-In(2)
200	1986.72	110.64	Final Hydro-static

Recovery

Length (ft)	Description	Volume (bbl)
210.00	Clean Gassy Oil Gravity 42	2.13
0.00	15%Gas 85%Oil	0.00
75.00	Muddy gassy oil	1.05
0.00	15%Gas 60%oil 25%mud	0.00

Gas Rates

	Choke (inches)	Pressure (psig)	Gas Rate (Mcf/d)
First Gas Rate	0.13	1.00	5.76
Last Gas Rate	0.13	3.00	6.51



**TRILOBITE
TESTING, INC.**

DRILL STEM TEST REPORT

Shelby Resources L.L.C.
445 Union Blvd Suite 208
Lakewood, Colorado 80228
ATTN: jeremy Schwartz

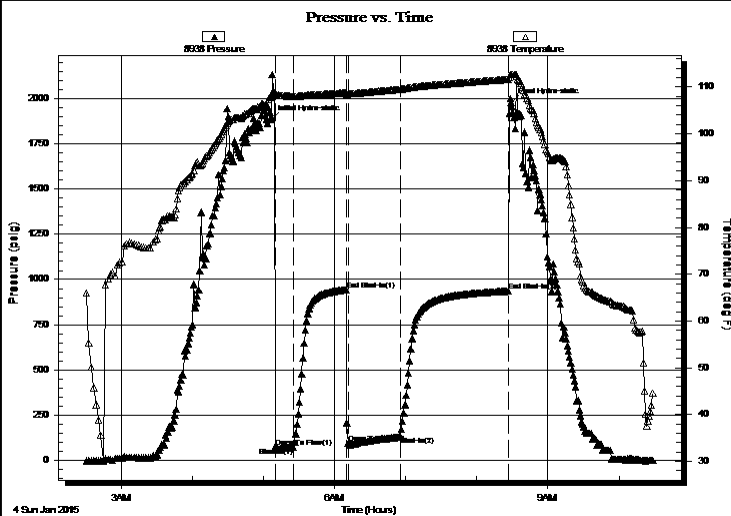
36-21s-16w Pawnee
WFY #1-36
Job Ticket: 1 **DST#: 1**
Test Start: 2015.01.04 @ 02:31:00

GENERAL INFORMATION:

Formation: **Conglomerate Sand**
Deviated: No Whipstock: ft (KB)
Time Tool Opened: 05:10:30
Time Test Ended: 10:29:00
Test Type: Conventional Bottom Hole (Initial)
Tester: Gene Budig
Unit No: 60-42
Interval: **3762.00 ft (KB) To 3803.00 ft (KB) (TVD)**
Reference Elevations: 1984.00 ft (KB)
Total Depth: 3803.00 ft (KB) (TVD) 1972.00 ft (CF)
Hole Diameter: 7.88 inches Hole Condition: Fair KB to GR/CF: 12.00 ft

Serial #: 8938 Outside
Press @ Run Depth: 935.73 psig @ 3798.00 ft (KB) Capacity: 8000.00 psig
Start Date: 2015.01.04 End Date: 2015.01.04 Last Calib.: 2015.01.04
Start Time: 02:31:00 End Time: 10:29:00 Time On Btm: 2015.01.04 @ 05:07:00
Time Off Btm: 2015.01.04 @ 08:29:00

TEST COMMENT: 1st Opening 15 Minutes Fair blow bob in 1 1/2 minutes
1st Shut-In 45 Minutes-No blow back
2nd Opening 45 Minutes-Good blow bob in 1 minute gas in 32
2nd Shut-In 90 Minutes-weak blow back



PRESSURE SUMMARY

Time (Min.)	Pressure (psig)	Temp (deg F)	Annotation
0	1885.78	107.82	Initial Hydro-static
3	75.84	108.15	Open To Flow (1)
19	72.81	107.99	Shut-In(1)
63	943.94	108.77	End Shut-In(1)
65	93.36	108.56	Open To Flow (2)
109	133.31	109.52	Shut-In(2)
200	935.73	111.64	End Shut-In(2)
202	1977.06	112.70	Final Hydro-static

Recovery

Length (ft)	Description	Volume (bbl)
210.00	Clean Gassy Oil Gravity 42	2.13
0.00	15%Gas 85%Oil	0.00
75.00	Muddy gassy oil	1.05
0.00	15%Gas 60%oil 25%mud	0.00

Gas Rates

	Choke (inches)	Pressure (psig)	Gas Rate (Mcf/d)
First Gas Rate	0.13	1.00	5.76
Last Gas Rate	0.13	3.00	6.51



**TRILOBITE
TESTING, INC.**

DRILL STEM TEST REPORT

FLUID SUMMARY

Shelby Resources L.L.C.
445 Union Blvd Suite 208
Lakewood, Colorado 80228
ATTN: jeremy Schwartz

36-21s-16w Pawnee
WFY #1-36
Job Ticket: 1 **DST#: 1**
Test Start: 2015.01.04 @ 02:31:00

Mud and Cushion Information

Mud Type: Gel Chem	Cushion Type:	Oil API:	deg API
Mud Weight: 9.00 lb/gal	Cushion Length: ft	Water Salinity:	ppm
Viscosity: 56.00 sec/qt	Cushion Volume: bbl		
Water Loss: 7.99 in ³	Gas Cushion Type:		
Resistivity: ohm.m	Gas Cushion Pressure: psig		
Salinity: 5700.00 ppm			
Filter Cake: 1.00 inches			

Recovery Information

Recovery Table

Length ft	Description	Volume bbl
210.00	Clean Gassy Oil Gravity 42	2.126
0.00	15%Gas 85%Oil	0.000
75.00	Muddy gassy oil	1.052
0.00	15%Gas 60%oil 25%mud	0.000

Total Length: 285.00 ft Total Volume: 3.178 bbl
Num Fluid Samples: 0 Num Gas Bombs: 0 Serial #:
Laboratory Name: Laboratory Location:
Recovery Comments:



**TRILOBITE
TESTING, INC.**

DRILL STEM TEST REPORT

GAS RATES

Shelby Resources L.L.C.
445 Union Blvd Suite 208
Lakewood, Colorado 80228
ATTN: jeremy Schwartz

36-21s-16w Pawnee
WFY #1-36
Job Ticket: 1 **DST#: 1**
Test Start: 2015.01.04 @ 02:31:00

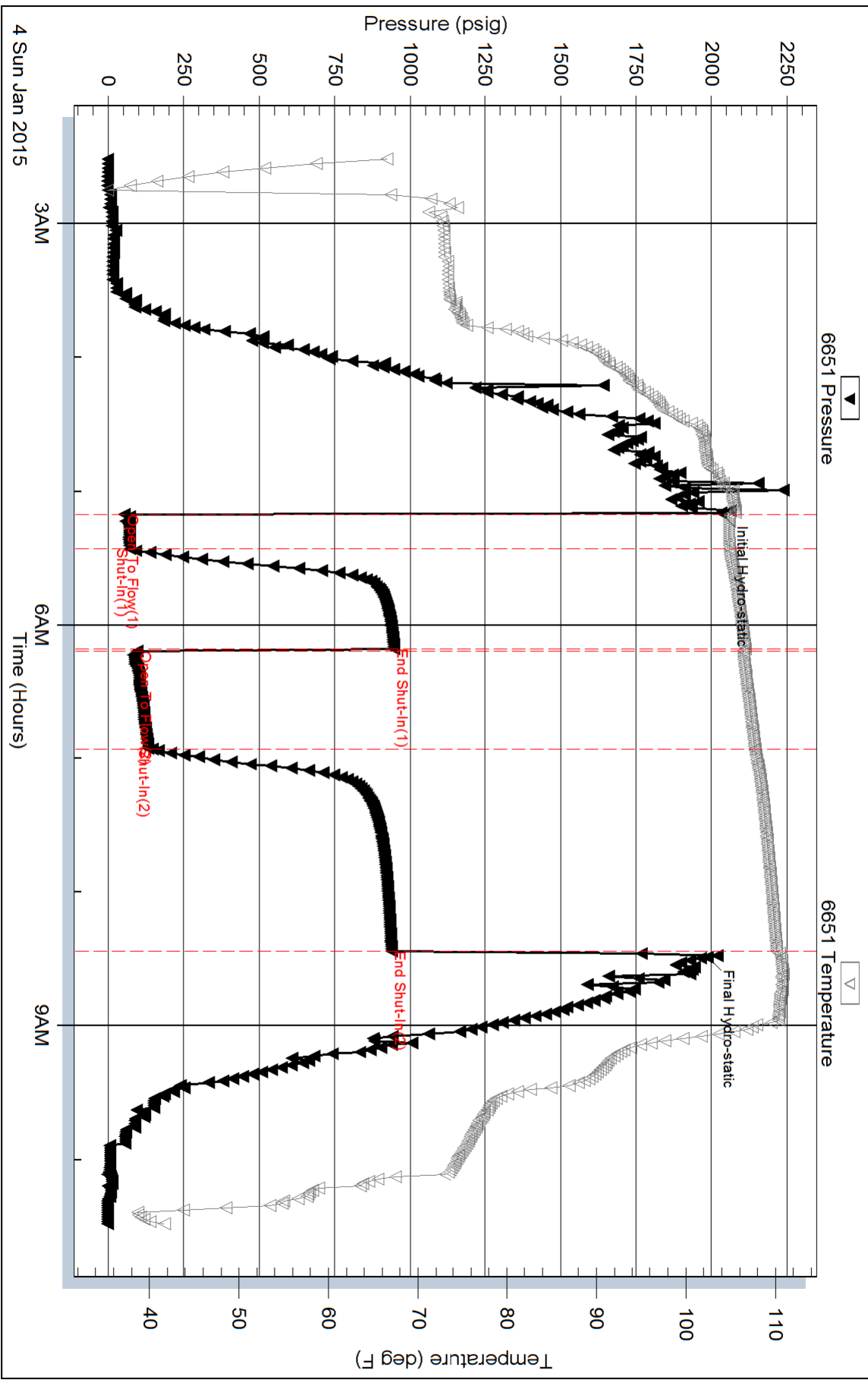
Gas Rates Information

Temperature: 59 (deg F)
Relative Density: 0.65
Z Factor: 0.8

Gas Rates Table

Flow Period	Elapsed Time	Choke (inches)	Pressure (psig)	Gas Rate (Mcf/d)
2	35	0.13	1.00	5.76
2	45	0.13	3.00	6.51

Pressure vs. Time



Pressure vs. Time

