



TRILOBITE TESTING, INC

DRILL STEM TEST REPORT

Shelby Resources L.L.C.
 445 Union Blvd Suite 208
 Lakewood, Colorado 80228
 ATTN: Jeremy Schwartz

36-21s-16w Pawnee
WFY #1-36
 Job Ticket: 62068 **DST#: 2**
 Test Start: 2015.01.05 @ 06:16:00

GENERAL INFORMATION:

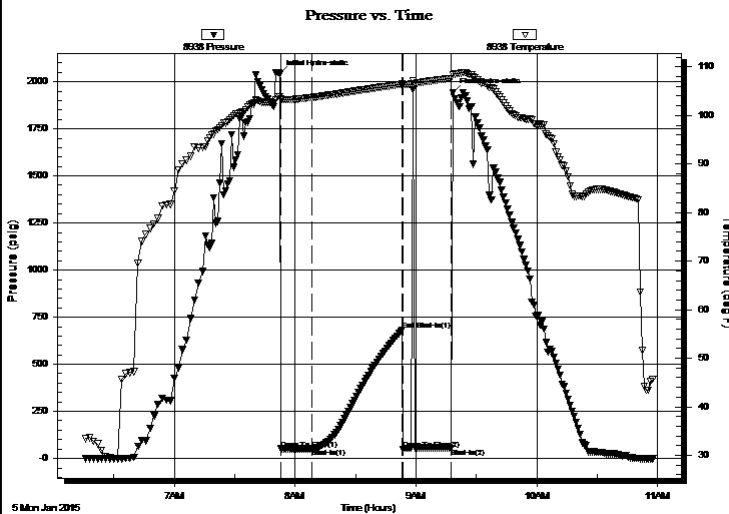
Formation: **Simpson**
 Deviated: No Whipstock: ft (KB)
 Time Tool Opened: 07:53:00
 Time Test Ended: 10:57:30
 Interval: **3861.00 ft (KB) To 3924.00 ft (KB) (TVD)**
 Total Depth: 3924.00 ft (KB) (TVD)
 Hole Diameter: 7.88 inches Hole Condition: Fair
 Test Type: Conventional Bottom Hole (Initial)
 Tester: Gene Budig
 Unit No: 60
 Reference Elevations: 1984.00 ft (KB)
 1972.00 ft (CF)
 KB to GR/CF: 12.00 ft

Serial #: 8938

Inside

Press@RunDepth: 52.82 psig @ 3919.28 ft (KB) Capacity: 8000.00 psig
 Start Date: 2015.01.05 End Date: 2015.01.05 Last Calib.: 2015.01.05
 Start Time: 06:16:00 End Time: 10:57:30 Time On Btm: 2015.01.05 @ 07:52:30
 Time Off Btm: 2015.01.05 @ 09:18:30

TEST COMMENT: 1st Opening 15 Minutes Weak surface blow through out
 1st Shut-In 45 Minutes
 2nd Opening 26 Minutes -Few bubbles dead flushed tool after 5 minutes weak blow for 3 minutes and died
 pulled tool no final shut-in taken



PRESSURE SUMMARY

Time (Min.)	Pressure (psig)	Temp (deg F)	Annotation
0	2040.75	103.90	Initial Hydro-static
1	50.75	103.36	Open To Flow (1)
16	52.82	103.72	Shut-In(1)
61	680.75	106.46	End Shut-In(1)
61	49.66	106.09	Open To Flow (2)
85	55.02	107.65	Shut-In(2)
86	1941.03	108.40	Final Hydro-static

Recovery

Length (ft)	Description	Volume (bbl)
10.00	Drilling mud	0.05

Gas Rates

	Choke (inches)	Pressure (psig)	Gas Rate (Mcf/d)



**TRILOBITE
TESTING, INC**

DRILL STEM TEST REPORT

FLUID SUMMARY

Shelby Resources L.L.C.
445 Union Blvd Suite 208
Lakewood, Colorado 80228
ATTN: Jeremy Schwartz

36-21s-16w Pawnee
WFY #1-36
Job Ticket: 62068 **DST#: 2**
Test Start: 2015.01.05 @ 06:16:00

Mud and Cushion Information

Mud Type: Gel Chem	Cushion Type:	Oil API:	deg API
Mud Weight: 9.00 lb/gal	Cushion Length: ft	Water Salinity:	ppm
Viscosity: 56.00 sec/qt	Cushion Volume: bbl		
Water Loss: 7.99 in ³	Gas Cushion Type:		
Resistivity: ohm.m	Gas Cushion Pressure: psig		
Salinity: 5700.00 ppm			
Filter Cake: 1.00 inches			

Recovery Information

Recovery Table

Length ft	Description	Volume bbl
10.00	Drilling mud	0.049

Total Length: 10.00 ft Total Volume: 0.049 bbl
 Num Fluid Samples: 0 Num Gas Bombs: 0 Serial #:
 Laboratory Name: Laboratory Location:
 Recovery Comments:

Pressure vs. Time

