



**TRILOBITE TESTING, INC.**

# DRILL STEM TEST REPORT

Samuel Gary Jr & Associates

**25-10s-30w Sheridan**

1515 Wynkoop  
STE 700  
Denver Co 80202  
ATTN: Chris Mitchell

**K&K Farms 1-25**

Job Ticket: 61143 **DST#: 2**

Test Start: 2015.01.25 @ 02:35:07

## GENERAL INFORMATION:

Formation: **LKC F-G**  
 Deviated: No Whipstock: ft (KB)  
 Time Tool Opened: 04:39:02  
 Time Test Ended: 09:53:01  
 Interval: **4030.00 ft (KB) To 4064.00 ft (KB) (TVD)**  
 Total Depth: 4064.00 ft (KB) (TVD)  
 Hole Diameter: 7.85 inches Hole Condition: Fair  
 Test Type: Conventional Bottom Hole (Reset)  
 Tester: Ray Schwager  
 Unit No: 70  
 Reference Elevations: 2905.00 ft (KB)  
 2897.00 ft (CF)  
 KB to GR/CF: 8.00 ft

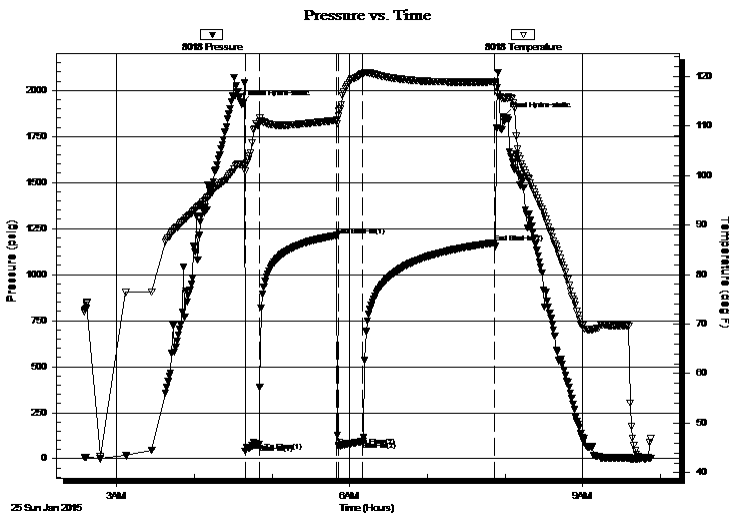
## Serial #: 8018

Inside

Press @ Run Depth: 93.62 psig @ 4035.00 ft (KB) Capacity: 8000.00 psig  
 Start Date: 2015.01.25 End Date: 2015.01.25 Last Calib.: 2015.01.25  
 Start Time: 02:35:07 End Time: 09:53:01 Time On Btm: 2015.01.25 @ 04:36:32  
 Time Off Btm: 2015.01.25 @ 07:58:31

TEST COMMENT: 10-IFP-w k to a fr bl 1/2" to 4" bl  
 60-ISIP-no bl  
 20-FFP-w k bl thru-out 1/4" to 3" bl  
 90-FSIP-no bl

## PRESSURE SUMMARY



Time (Min.)	Pressure (psig)	Temp (deg F)	Annotation
0	1924.98	102.22	Initial Hydro-static
3	39.52	100.86	Open To Flow (1)
14	77.59	110.78	Shut-In(1)
74	1212.29	111.14	End Shut-In(1)
75	66.87	111.96	Open To Flow (2)
94	93.62	120.53	Shut-In(2)
195	1172.20	118.90	End Shut-In(2)
202	1855.60	115.54	Final Hydro-static

## Recovery

Length (ft)	Description	Volume (bbl)
60.00	Water	0.57
60.00	MW 20%M80%W w/show of oil	0.84
20.00	SOCWM 2%O25%W73%m	0.28
2.00	CO	0.03

## Gas Rates

Choke (inches)	Pressure (psig)	Gas Rate (Mcf/d)

\* Recovery from multiple tests







**TRILOBITE  
TESTING, INC.**

# DRILL STEM TEST REPORT

**FLUID SUMMARY**

Samuel Gary Jr & Associates

**25-10s-30w Sheridan**

1515 Wynkoop  
STE 700  
Denver Co 80202  
ATTN: Chris Mitchell

**K&K Farms 1-25**

Job Ticket: 61143

**DST#: 2**

Test Start: 2015.01.25 @ 02:35:07

## Mud and Cushion Information

Mud Type: Gel Chem

Mud Weight: 9.00 lb/gal

Viscosity: 65.00 sec/qt

Water Loss: 7.59 in<sup>3</sup>

Resistivity: ohm.m

Salinity: 700.00 ppm

Filter Cake: 1.00 inches

Cushion Type:

Cushion Length: ft

Cushion Volume: bbl

Gas Cushion Type:

Gas Cushion Pressure: psig

Oil API:

Water Salinity: 65000 ppm

deg API

## Recovery Information

Recovery Table

Length ft	Description	Volume bbl
60.00	Water	0.568
60.00	MW 20%M80%W w/show of oil	0.842
20.00	SOCWM 2%O25%W73%m	0.281
2.00	CO	0.028

Total Length: 142.00 ft      Total Volume: 1.719 bbl

Num Fluid Samples: 0

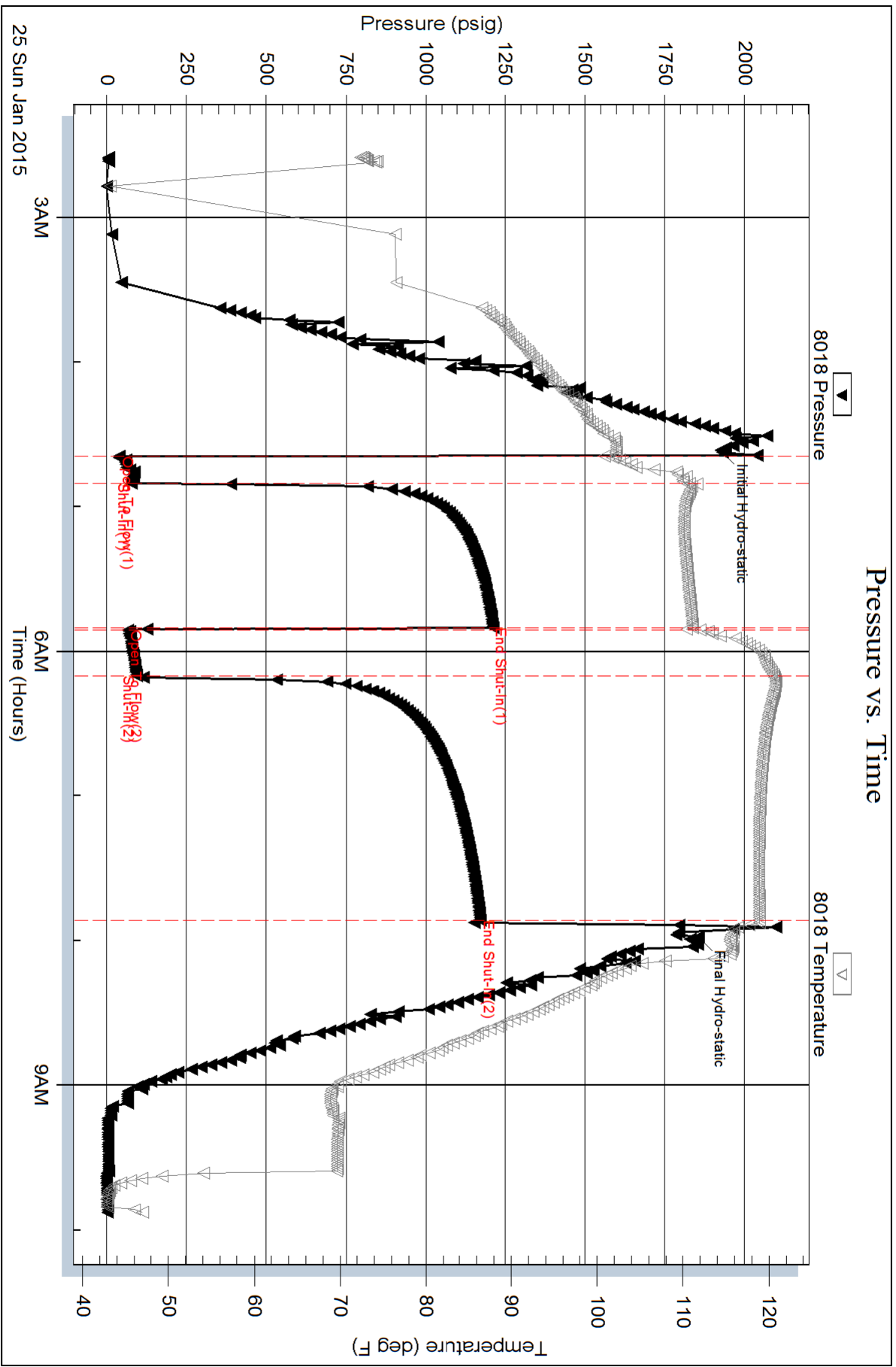
Num Gas Bombs: 0

Serial #:

Laboratory Name:

Laboratory Location:

Recovery Comments: RW .17 @ 50F

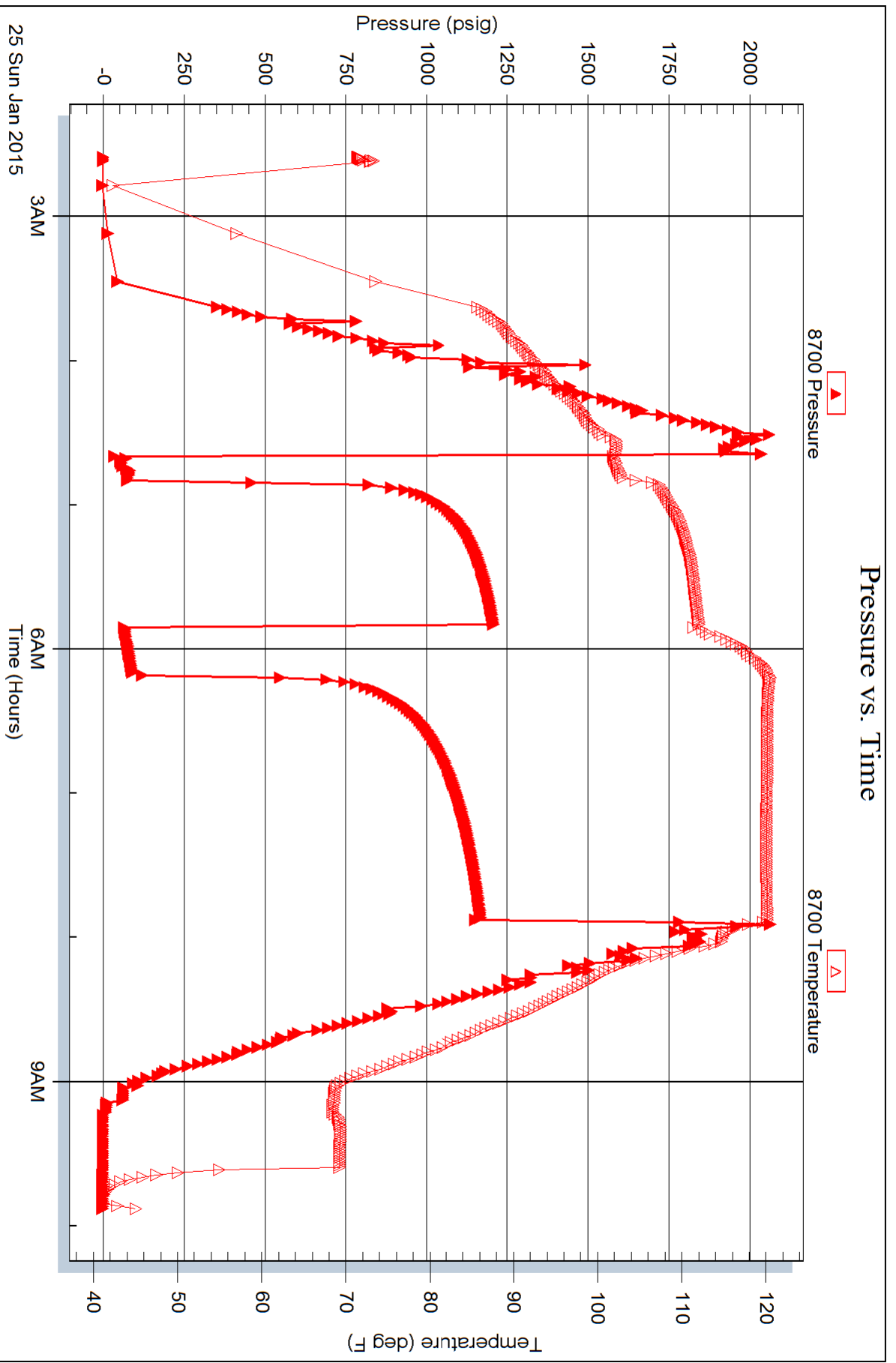


Serial #: 8700

Outside Samuel Gary Jr & Associates

K&K Farms 1-25

DST Test Number: 2



Serial #: 8374

Fluid

Samuel Gary Jr & Associates

K&K Farms 1-25

DST Test Number: 2

