



TRILOBITE TESTING, INC.

DRILL STEM TEST REPORT

Samuel Gary Jr. & Associates

15/2s/36w Rawlins KS

1515 Wynkoop St. STE 700
Denver, CO 80202

Frisbie #1-15

Job Ticket: 62151

DST#: 1

ATTN: Clayton Camozzi

Test Start: 2015.02.08 @ 00:45:00

GENERAL INFORMATION:

Formation: **Oread**

Deviated: No Whipstock: ft (KB)

Time Tool Opened: 03:53:00

Time Test Ended: 06:27:45

Interval: 4128.00 ft (KB) To 4196.00 ft (KB) (TVD)

Total Depth: 4196.00 ft (KB) (TVD)

Hole Diameter: 7.88 inches Hole Condition: Fair

Test Type: Conventional Bottom Hole (Initial)

Tester: James Winder

Unit No: 83

Reference Elevations: 3330.00 ft (KB)

3325.00 ft (CF)

KB to GR/CF: 5.00 ft

Serial #: 8791

Inside

Press @ Run Depth: psig @ 4129.00 ft (KB)

Start Date: 2015.02.08

End Date:

2015.02.08

Start Time: 00:45:05

End Time:

06:27:44

Capacity: 8000.00 psig

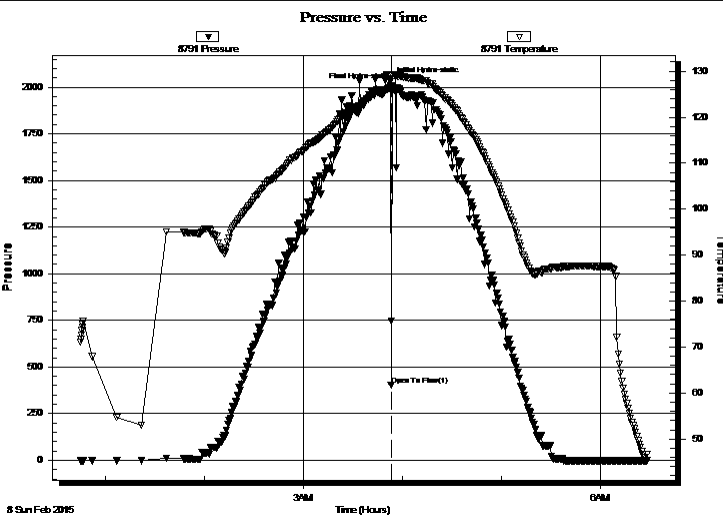
Last Calib.: 2015.02.08

Time On Btm: 2015.02.08 @ 03:52:45

Time Off Btm: 2015.02.08 @ 03:56:30

TEST COMMENT: Packers not holding
Reset tool
Packers failed again
Pulled tool - Mis-run

PRESSURE SUMMARY



| Time (Min.) | Pressure (psig) | Temp (deg F) | Annotation |
|-------------|-----------------|--------------|----------------------|
| 0 | 2030.76 | 126.37 | Initial Hydro-static |
| 1 | 403.81 | 125.58 | Open To Flow (1) |
| 4 | 1996.79 | 129.12 | Final Hydro-static |

Recovery

| Length (ft) | Description | Volume (bbl) |
|-------------|-------------------------------|--------------|
| 230.00 | Mud 100% | 1.53 |
| 0.00 | A few oil specs in top sample | 0.00 |
| | | |
| | | |
| | | |

Gas Rates

| Choke (inches) | Pressure (psig) | Gas Rate (Mcf/d) |
|----------------|-----------------|------------------|
| | | |



TRILOBITE TESTING, INC.

DRILL STEM TEST REPORT

Samuel Gary Jr. & Associates
 1515 Wynkoop St. STE 700
 Denver, CO 80202
 ATTN: Clayton Camozzi

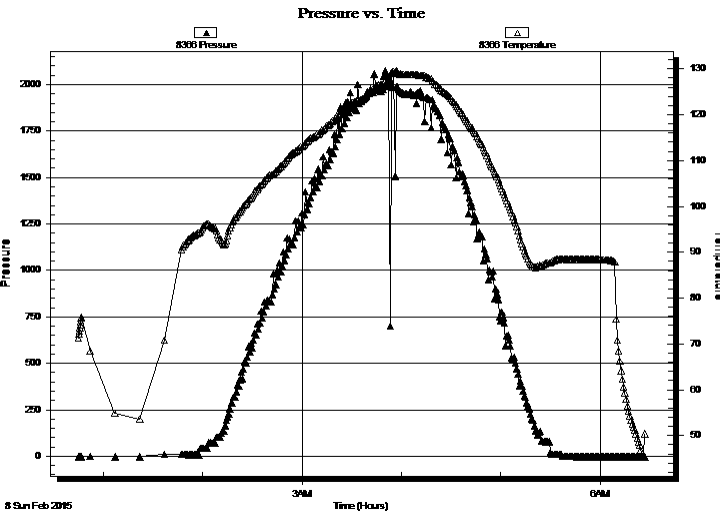
15/2s/36w Rawlins KS
Frisbie #1-15
 Job Ticket: 62151 **DST#: 1**
 Test Start: 2015.02.08 @ 00:45:00

GENERAL INFORMATION:

Formation: **Oread**
 Deviated: No Whipstock: ft (KB)
 Test Type: Conventional Bottom Hole (Initial)
 Time Tool Opened: 03:53:00 Tester: James Winder
 Time Test Ended: 06:27:45 Unit No: 83
 Interval: **4128.00 ft (KB) To 4196.00 ft (KB) (TVD)** Reference Elevations: 3330.00 ft (KB)
 Total Depth: 4196.00 ft (KB) (TVD) 3325.00 ft (CF)
 Hole Diameter: 7.88 inches Hole Condition: Fair KB to GR/CF: 5.00 ft

Serial #: 8366 Outside
 Press @ Run Depth: psig @ 4129.00 ft (KB) Capacity: 8000.00 psig
 Start Date: 2015.02.08 End Date: 2015.02.08 Last Calib.: 2015.02.08
 Start Time: 00:45:05 End Time: 06:27:14 Time On Btm:
 Time Off Btm:

TEST COMMENT: Packers not holding
 Reset tool
 Packers failed again
 Pulled tool - Mis-run



PRESSURE SUMMARY

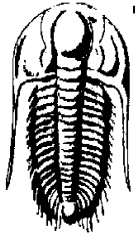
| Time (Min.) | Pressure (psig) | Temp (deg F) | Annotation |
|-------------|-----------------|--------------|------------|
| | | | |
| | | | |
| | | | |

Recovery

| Length (ft) | Description | Volume (bbl) |
|-------------|-------------------------------|--------------|
| 230.00 | Mud 100% | 1.53 |
| 0.00 | A few oil specs in top sample | 0.00 |
| | | |
| | | |
| | | |

Gas Rates

| Choke (inches) | Pressure (psig) | Gas Rate (Mcf/d) |
|----------------|-----------------|------------------|
| | | |



TRILOBITE TESTING, INC.

DRILL STEM TEST REPORT

Samuel Gary Jr. & Associates

1515 Wynkoop St. STE 700
Denver, CO 80202

ATTN: Clayton Camozzi

15/2s/36w Rawlins KS

Frisbie #1-15

Job Ticket: 62151

DST#: 1

Test Start: 2015.02.08 @ 00:45:00

GENERAL INFORMATION:

Formation: **Oread**

Deviated: No Whipstock: ft (KB)

Time Tool Opened: 03:53:00

Time Test Ended: 06:27:45

Test Type: Conventional Bottom Hole (Initial)

Tester: James Winder

Unit No: 83

Interval: 4128.00 ft (KB) To 4196.00 ft (KB) (TVD)

Reference Elevations: 3330.00 ft (KB)

Total Depth: 4196.00 ft (KB) (TVD)

3325.00 ft (CF)

Hole Diameter: 7.88 inches Hole Condition: Fair

KB to GR/CF: 5.00 ft

Serial #: 8320

Fluid

Press @RunDepth: psig @ 4095.00 ft (KB)

Capacity: 8000.00 psig

Start Date: 2015.02.08 End Date: 2015.02.08

Last Calib.: 2015.02.08

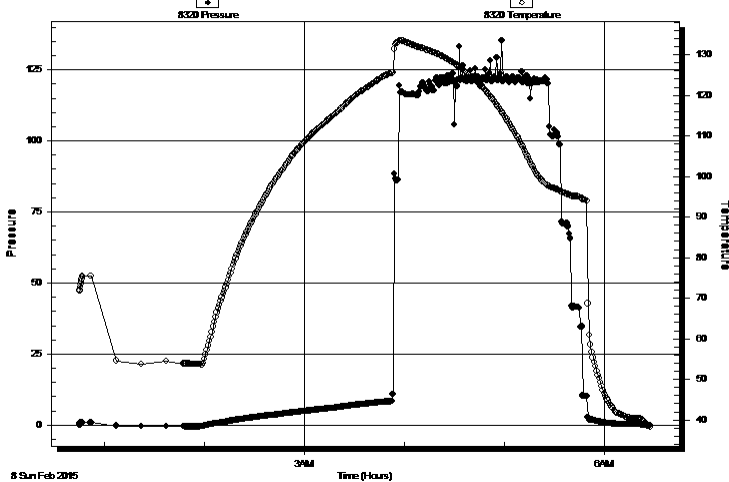
Start Time: 00:45:05 End Time: 06:28:14

Time On Btm:

Time Off Btm:

TEST COMMENT: Packers not holding
Reset tool
Packers failed again
Pulled tool - Mis-run

Pressure vs. Time



PRESSURE SUMMARY

| Time (Min.) | Pressure (psig) | Temp (deg F) | Annotation |
|-------------|-----------------|--------------|------------|
| | | | |
| | | | |
| | | | |
| | | | |
| | | | |
| | | | |
| | | | |
| | | | |

Recovery

| Length (ft) | Description | Volume (bbl) |
|-------------|-------------------------------|--------------|
| 230.00 | Mud 100% | 1.53 |
| 0.00 | A few oil specs in top sample | 0.00 |
| | | |
| | | |
| | | |
| | | |

Gas Rates

| | Choke (inches) | Pressure (psig) | Gas Rate (Mcf/d) |
|--|----------------|-----------------|------------------|
| | | | |
| | | | |



**TRILOBITE
TESTING, INC.**

DRILL STEM TEST REPORT

FLUID SUMMARY

Samuel Gary Jr. & Associates

15/2s/36w Rawlins KS

1515 Wynkoop St. STE 700
Denver, CO 80202

Frisbie #1-15

Job Ticket: 62151

DST#: 1

ATTN: Clayton Camozzi

Test Start: 2015.02.08 @ 00:45:00

Mud and Cushion Information

Mud Type: Gel Chem

Cushion Type:

Oil API:

deg API

Mud Weight: 9.00 lb/gal

Cushion Length:

ft

Water Salinity:

ppm

Viscosity: 51.00 sec/qt

Cushion Volume:

bbbl

Water Loss: 6.18 in³

Gas Cushion Type:

Resistivity: ohm.m

Gas Cushion Pressure:

psig

Salinity: 1500.00 ppm

Filter Cake: 1.00 inches

Recovery Information

Recovery Table

| Length ft | Description | Volume bbl |
|--------------|-------------------------------|---------------|
| 230.00 | Mud 100% | 1.532 |
| 0.00 | A few oil specs in top sample | 0.000 |

Total Length: 230.00 ft Total Volume: 1.532 bbl

Num Fluid Samples: 0

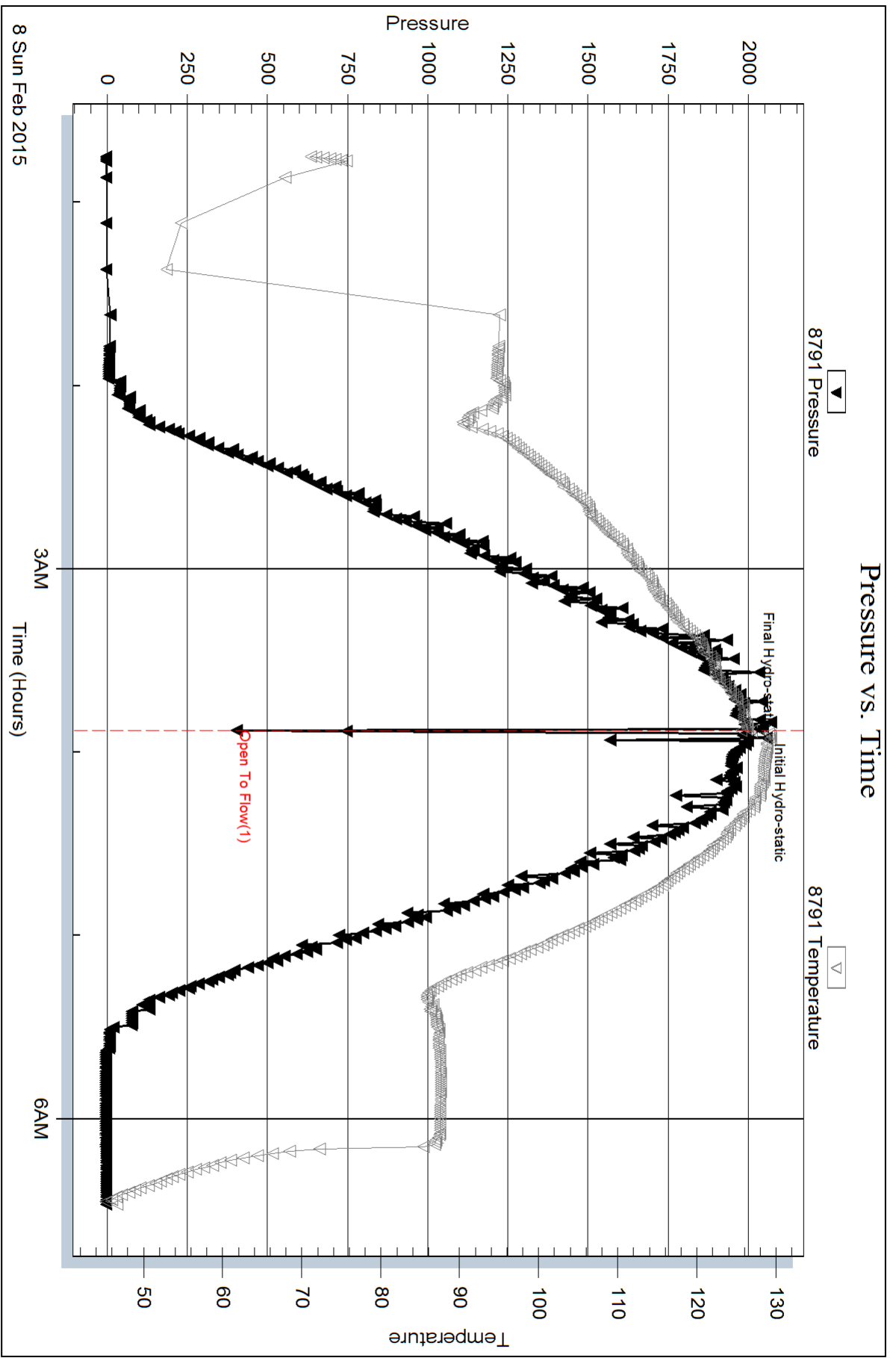
Num Gas Bombs: 0

Serial #:

Laboratory Name:

Laboratory Location:

Recovery Comments:

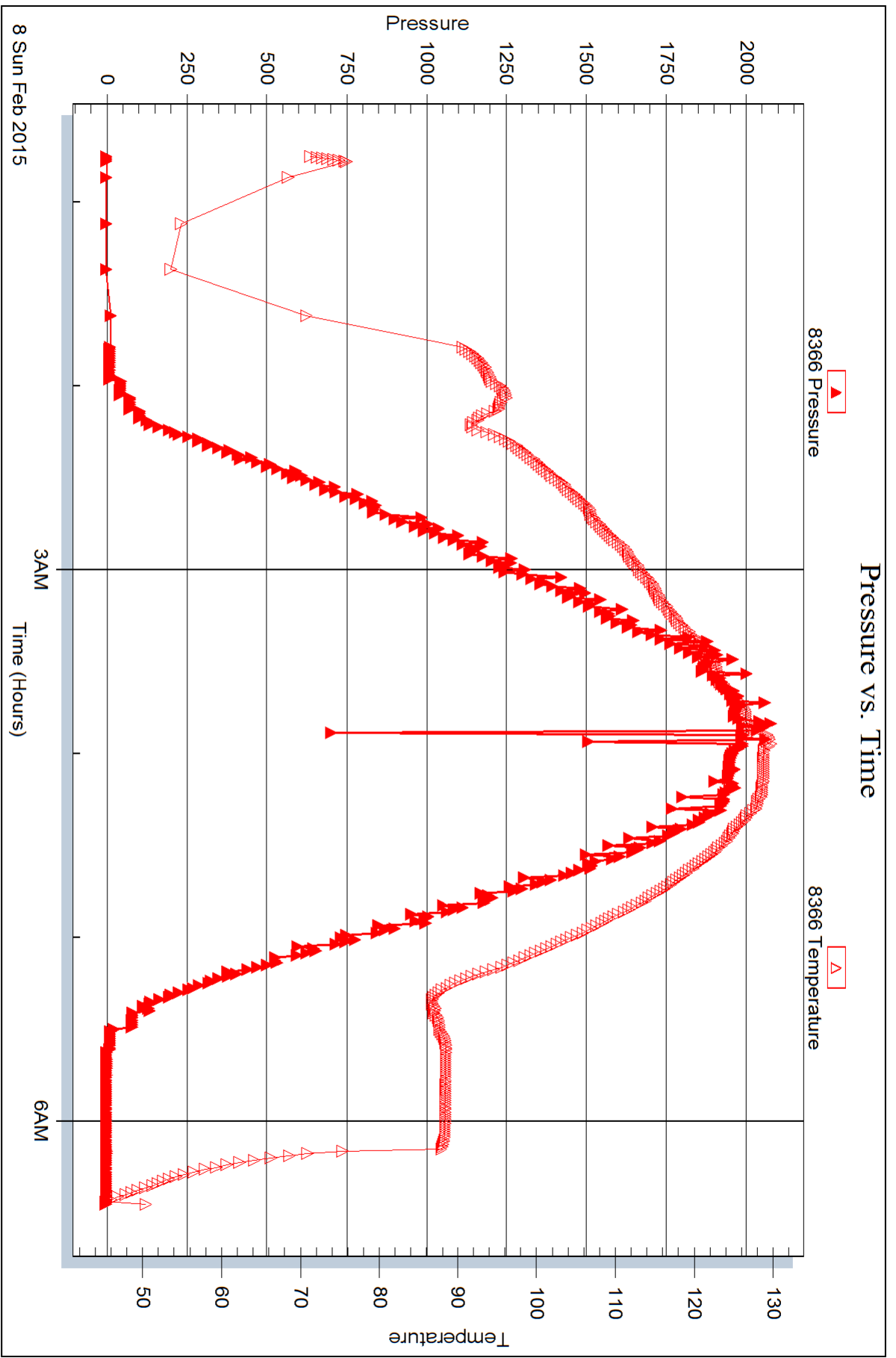


Serial #: 8366

Outside Samuel Gary Jr. & Associates

Frisbie #1-15

DST Test Number: 1



Serial #: 8320

Fluid

Samuel Gary Jr. & Associates

Frisbie #1-15

DST Test Number: 1

