



**TRILOBITE  
TESTING, INC.**

# DRILL STEM TEST REPORT

Samuel Gary Jr. & Associates Inc.

**15/2s/36w Rawlins KS**

1515 Wynkoop St. STE 700  
Denver, CO 80202

**Frisbie #1-15**

Job Ticket: 62153

**DST#: 3**

ATTN: Clayton Camozzi

Test Start: 2015.02.09 @ 04:03:00

## GENERAL INFORMATION:

Formation: **Douglas Sand - LKC "**

Deviated: No Whipstock: ft (KB)

Time Tool Opened: 06:43:15

Time Test Ended: 11:49:30

Test Type: Conventional Bottom Hole (Reset)

Tester: James Winder

Unit No: 83

**Interval: 4204.00 ft (KB) To 4284.00 ft (KB) (TVD)**

Reference Elevations: 3330.00 ft (KB)

Total Depth: 4284.00 ft (KB) (TVD)

3325.00 ft (CF)

Hole Diameter: 7.88 inches Hole Condition: Fair

KB to GR/CF: 5.00 ft

**Serial #: 8791**

**Inside**

Press@RunDepth: 220.10 psig @ 4205.00 ft (KB)

Capacity: 8000.00 psig

Start Date: 2015.02.09

End Date:

2015.02.09

Last Calib.:

2015.02.09

Start Time:

04:03:05

End Time:

11:49:29

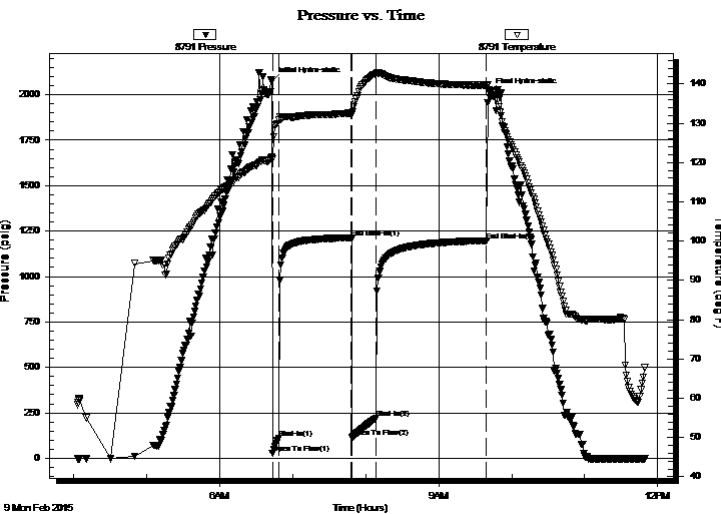
Time On Btm:

2015.02.09 @ 06:42:45

Time Off Btm:

2015.02.09 @ 09:41:15

**TEST COMMENT:** 5 - IF: blow built to 7 1/4"  
60 - IS: No blow back  
20 - FF: Blow built to BOB (11") at 9 1/2 min.  
90 - FS: No blow back



## PRESSURE SUMMARY

Time (Min.)	Pressure (psig)	Temp (deg F)	Annotation
0	2073.25	121.41	Initial Hydro-static
1	28.93	120.91	Open To Flow (1)
6	111.38	130.94	Shut-In(1)
66	1213.83	132.57	End Shut-In(1)
66	116.70	132.35	Open To Flow (2)
86	220.10	142.70	Shut-In(2)
177	1198.17	139.66	End Shut-In(2)
179	2014.54	138.55	Final Hydro-static

## Recovery

Length (ft)	Description	Volume (bbl)
317.00	MCW w/trace oil 66%w, 34%m	2.75
130.00	WM w/trace oil 57%m, 43%w	1.82

\* Recovery from multiple tests

## Gas Rates

	Choke (inches)	Pressure (psig)	Gas Rate (Mcf/d)





**TRILOBITE  
TESTING, INC**

# DRILL STEM TEST REPORT

**FLUID SUMMARY**

Samuel Gary Jr. & Associates Inc.

**15/2s/36w Rawlins KS**

1515 Wynkoop St. STE 700  
Denver, CO 80202

**Frisbie #1-15**

Job Ticket: 62153

**DST#: 3**

ATTN: Clayton Camozzi

Test Start: 2015.02.09 @ 04:03:00

## Mud and Cushion Information

Mud Type: Gel Chem

Cushion Type:

Oil API:

deg API

Mud Weight: 9.00 lb/gal

Cushion Length:

ft

Water Salinity:

27000 ppm

Viscosity: 60.00 sec/qt

Cushion Volume:

bbbl

Water Loss: 6.40 in<sup>3</sup>

Gas Cushion Type:

Resistivity: ohm.m

Gas Cushion Pressure:

psig

Salinity: 2000.00 ppm

Filter Cake: 1.00 inches

## Recovery Information

Recovery Table

Length ft	Description	Volume bbbl
317.00	MCW w /trace oil 66%w , 34%m	2.752
130.00	WM w /trace oil 57%m, 43%w	1.824

Total Length: 447.00 ft      Total Volume: 4.576 bbl

Num Fluid Samples: 0

Num Gas Bombs: 0

Serial #:

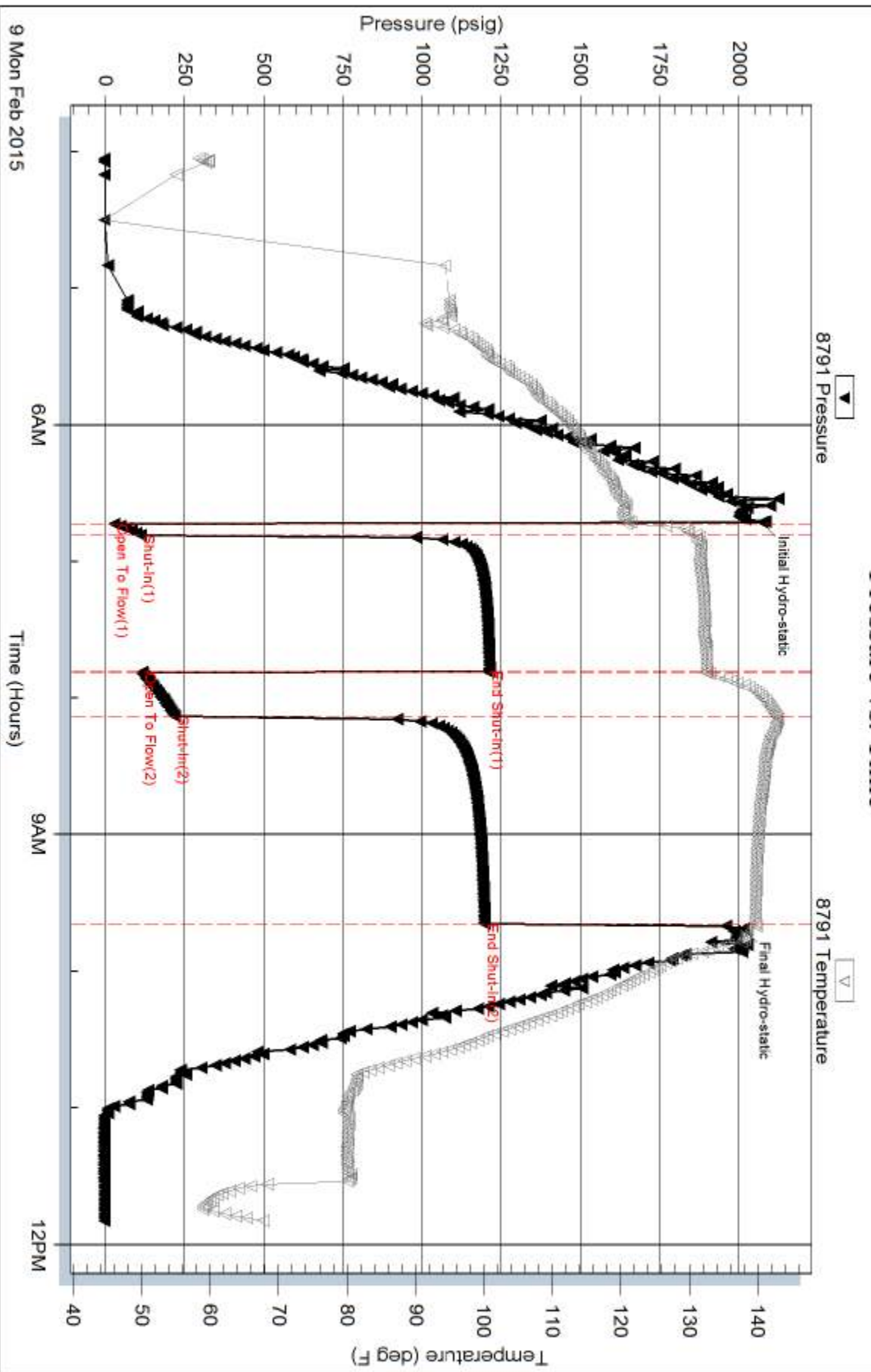
Laboratory Name:

Laboratory Location:

Recovery Comments: RW = .256 ohms @ 71.8 deg F

Chlorides = 27,000 ppm

### Pressure vs. Time



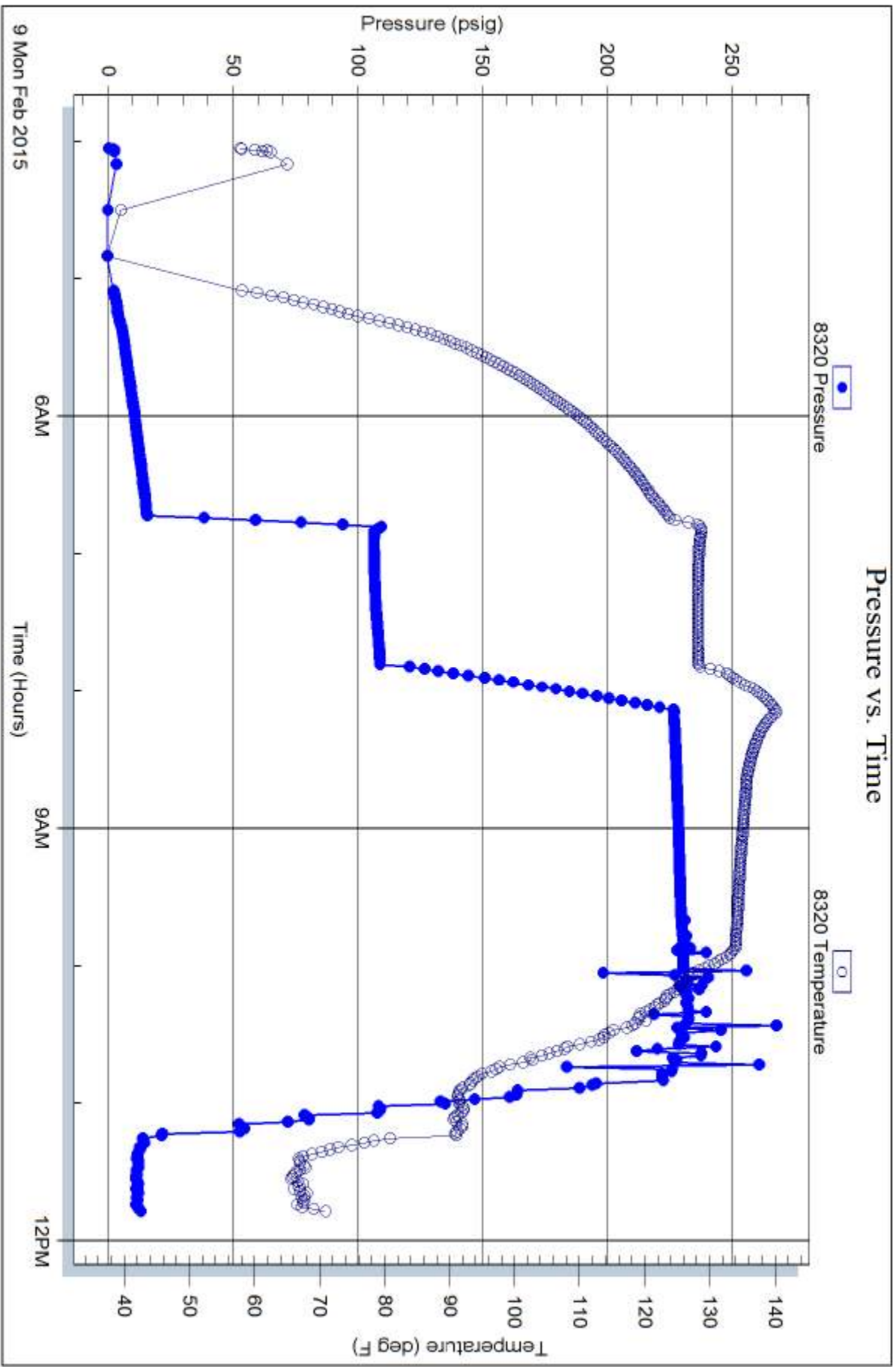
Serial #: 8320

Fluid

Samuel Gary Jr. & Associates Inc.

Frisbie #1-15

DST Test Number: 3



Tribble Testing, Inc

Ref. No: 62153

Printed: 2015.02.09 @ 13:29:15