



**TRILOBITE
TESTING, INC**

DRILL STEM TEST REPORT

Culbeath Oil & GAS CO INC

7 5 35 Rawlins KS

3501 S Yale AVE
Tulsa OK 74135

Dewey Trust 2-7 A

ATTN: Anthony Luna

Job Ticket: 65070

DST#: 1

Test Start: 2015.07.07 @ 18:00:00

GENERAL INFORMATION:

Formation: **LKC "L"**

Deviated: No Whipstock: ft (KB)

Time Tool Opened: 20:16:30

Time Test Ended: 02:20:00

Test Type: Conventional Bottom Hole (Initial)

Tester: Robert Zodrow

Unit No: 66

Interval: 4376.00 ft (KB) To 4402.00 ft (KB) (TVD)

Reference Elevations: 3246.00 ft (KB)

Total Depth: 4402.00 ft (KB) (TVD)

3241.00 ft (CF)

Hole Diameter: 7.88 inches Hole Condition: Fair

KB to GR/CF: 5.00 ft

Serial #: 6741

Inside

Press@RunDepth: 96.67 psig @ 4377.00 ft (KB)

Capacity: 8000.00 psig

Start Date: 2015.07.07

End Date:

2015.07.08

Last Calib.:

2015.07.08

Start Time:

18:00:05

End Time:

02:19:59

Time On Btm:

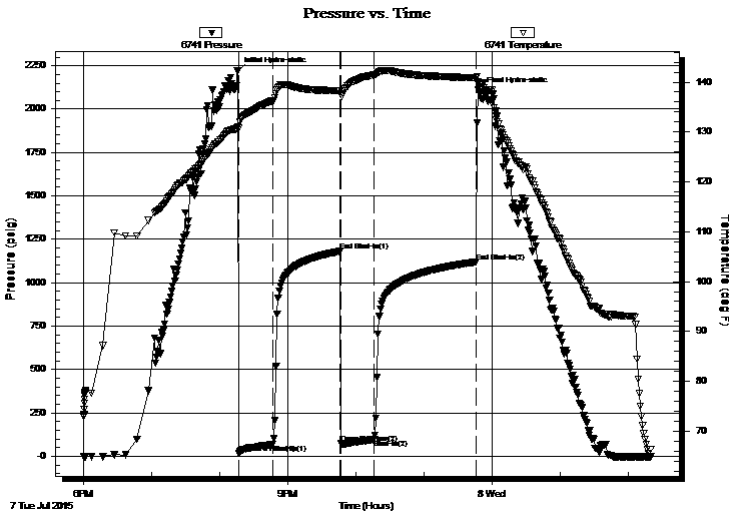
2015.07.07 @ 20:16:00

Time Off Btm:

2015.07.07 @ 23:49:00

TEST COMMENT: 30-IF- Bob in 12 mins
60-ISI- Return built to surface died in 25 mins
30-FF- Bob in 8 mins
90-FSI- Return built to 1 1/2" died in 77 mins

PRESSURE SUMMARY



Time (Min.)	Pressure (psig)	Temp (deg F)	Annotation
0	2217.09	131.08	Initial Hydro-static
1	17.62	130.74	Open To Flow (1)
31	67.22	136.21	Shut-In(1)
90	1180.39	138.29	End Shut-In(1)
91	73.68	137.48	Open To Flow (2)
120	96.67	141.42	Shut-In(2)
210	1119.58	140.81	End Shut-In(2)
213	2101.27	139.77	Final Hydro-static

Recovery

Length (ft)	Description	Volume (bbl)
60.00	GMCO 15%G 30%M 55%O	0.30
185.00	GO 20%G 80%O	2.04
0.00	750' GIP	0.00

Gas Rates

	Choke (inches)	Pressure (psig)	Gas Rate (Mcf/d)



**TRILOBITE
TESTING, INC**

DRILL STEM TEST REPORT

FLUID SUMMARY

Culbeath Oil & GAS CO INC

7 5 35 Rawlins KS

3501 S Yale AVE
Tulsa OK 74135

Dewey Trust 2-7 A

Job Ticket: 65070

DST#: 1

ATTN: Anthony Luna

Test Start: 2015.07.07 @ 18:00:00

Mud and Cushion Information

Mud Type: Gel Chem

Cushion Type:

Oil API:

37 deg API

Mud Weight: 9.00 lb/gal

Cushion Length:

ft

Water Salinity:

ppm

Viscosity: 52.00 sec/qt

Cushion Volume:

bbbl

Water Loss: 8.79 in³

Gas Cushion Type:

Resistivity: 0.00 ohm.m

Gas Cushion Pressure:

psig

Salinity: 500.00 ppm

Filter Cake: 1.00 inches

Recovery Information

Recovery Table

Length ft	Description	Volume bbl
60.00	GMCO 15%G 30%M 55%O	0.295
185.00	GO 20%G 80%O	2.039
0.00	750' GIP	0.000

Total Length: 245.00 ft Total Volume: 2.334 bbl

Num Fluid Samples: 0

Num Gas Bombs: 0

Serial #:

Laboratory Name:

Laboratory Location:

Recovery Comments:

Serial #: 6741

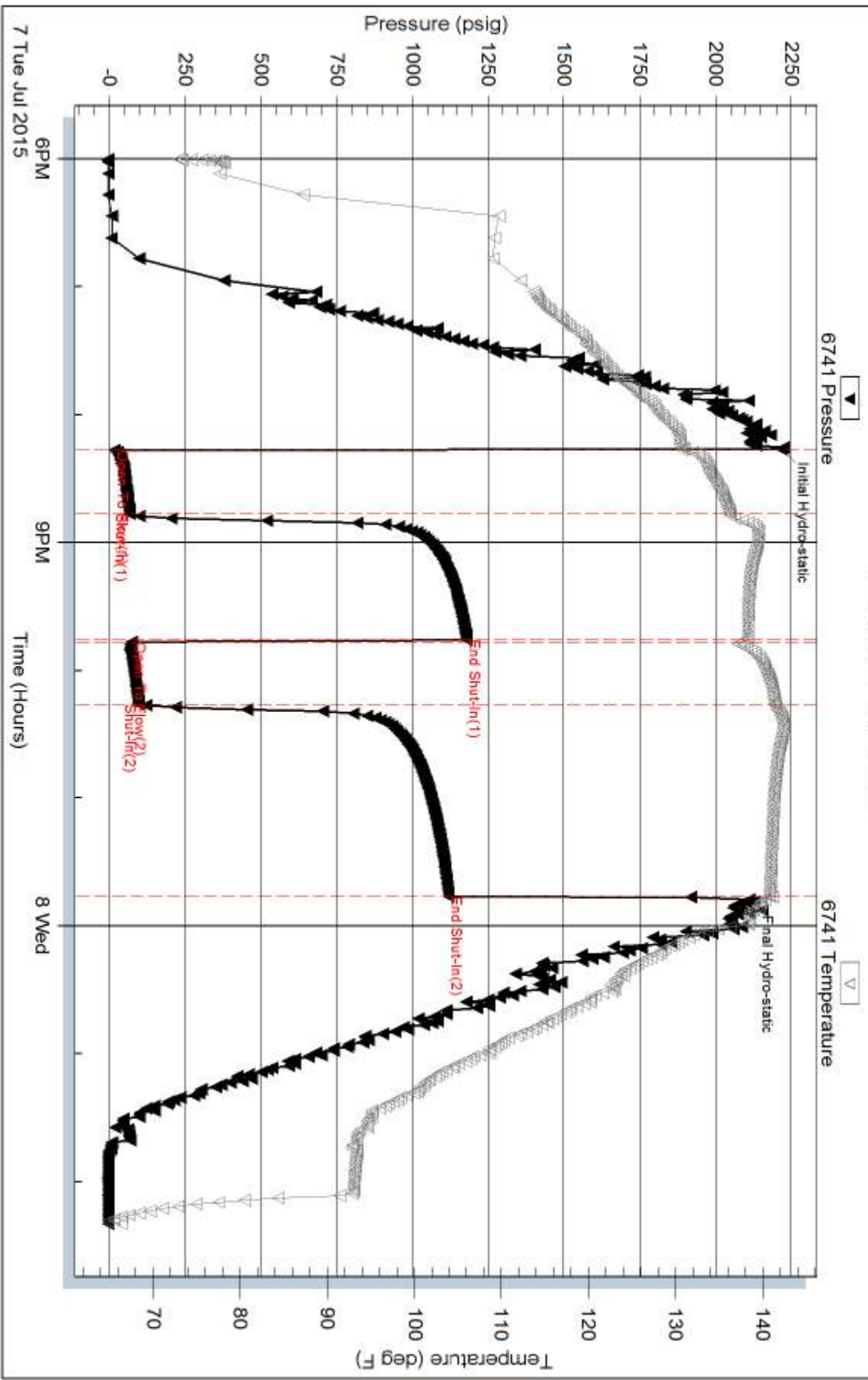
Inside

Culbath Oil & GAS CO INC

Dewey Trust 2-7 A

DST Test Number: 1

Pressure vs. Time



Trilobite Testing, Inc

Ref. No: 65070

Printed: 2015.07.08 @ 08:06:42