



**TRILOBITE  
TESTING, INC**

# DRILL STEM TEST REPORT

Culbreath Oil & Gas Co., Inc.

**5/5S/35W**

3501 S. Yale Ave.  
Tulsa, Ok. 74135

**Otis Dewey #1-4**

Job Ticket: 62299

**DST#: 3**

ATTN: Anthony Luna

Test Start: 2015.06.24 @ 11:33:00

## GENERAL INFORMATION:

Formation: **LKC "H"**

Deviated: No Whipstock: ft (KB)

Time Tool Opened: 15:41:30

Time Test Ended: 19:37:30

Test Type: Conventional Bottom Hole (Initial)

Tester: Brandon Quintana

Unit No: 57

**Interval: 4174.00 ft (KB) To 4216.00 ft (KB) (TVD)**

Total Depth: 4216.00 ft (KB) (TVD)

Hole Diameter: 7.88 inches Hole Condition: Fair

Reference Elevations: 3159.00 ft (KB)

3154.00 ft (CF)

KB to GR/CF: 5.00 ft

**Serial #: 8647**

**Inside**

Press@RunDepth: 120.54 psig @ 4175.00 ft (KB)

Start Date: 2015.06.24

End Date:

2015.06.24

Start Time: 11:33:01

End Time:

19:37:30

Capacity: 8000.00 psig

Last Calib.: 2015.06.24

Time On Btm: 2015.06.24 @ 15:40:30

Time Off Btm: 2015.06.24 @ 17:44:30

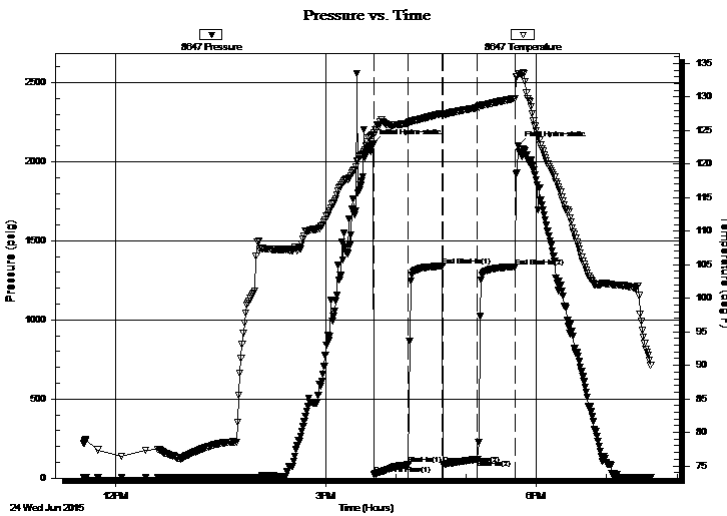
**TEST COMMENT:** 30 - IF - Opened w/ surface blow , built to 1/2" after about 25 min.

30 - ISI - No Return

30 - FF - No Blow

30 - FSI - No Return

## PRESSURE SUMMARY



Time (Min.)	Pressure (psig)	Temp (deg F)	Annotation
0	2111.94	124.21	Initial Hydro-static
1	24.39	124.61	Open To Flow (1)
30	86.02	126.10	Shut-In(1)
59	1340.89	127.56	End Shut-In(1)
60	88.52	127.37	Open To Flow (2)
89	120.54	128.39	Shut-In(2)
121	1336.55	129.78	End Shut-In(2)
124	2098.95	133.50	Final Hydro-static

## Recovery

Length (ft)	Description	Volume (bbl)
220.00	MW 90%w , 10%m	1.98

## Gas Rates

Choke (inches)	Pressure (psig)	Gas Rate (Mcf/d)



**TRILOBITE  
TESTING, INC**

# DRILL STEM TEST REPORT

## FLUID SUMMARY

Culbreath Oil & Gas Co., Inc.

**5/5S/35W**

3501 S. Yale Ave.  
Tulsa, Ok. 74135

**Otis Dewey #1-4**

Job Ticket: 62299

**DST#: 3**

ATTN: Anthony Luna

Test Start: 2015.06.24 @ 11:33:00

### Mud and Cushion Information

Mud Type: Gel Chem

Cushion Type:

Oil API:

deg API

Mud Weight: 9.00 lb/gal

Cushion Length:

ft

Water Salinity:

ppm

Viscosity: 54.00 sec/qt

Cushion Volume:

bbbl

Water Loss: 7.99 in<sup>3</sup>

Gas Cushion Type:

Resistivity: ohm.m

Gas Cushion Pressure:

psig

Salinity: 600.00 ppm

Filter Cake: 1.00 inches

### Recovery Information

Recovery Table

Length ft	Description	Volume bbl
220.00	MW 90%w , 10%m	1.984

Total Length: 220.00 ft      Total Volume: 1.984 bbl

Num Fluid Samples: 0

Num Gas Bombs: 0

Serial #:

Laboratory Name:

Laboratory Location:

Recovery Comments: RW .097 @ 91F Chlorides 60,000ppm

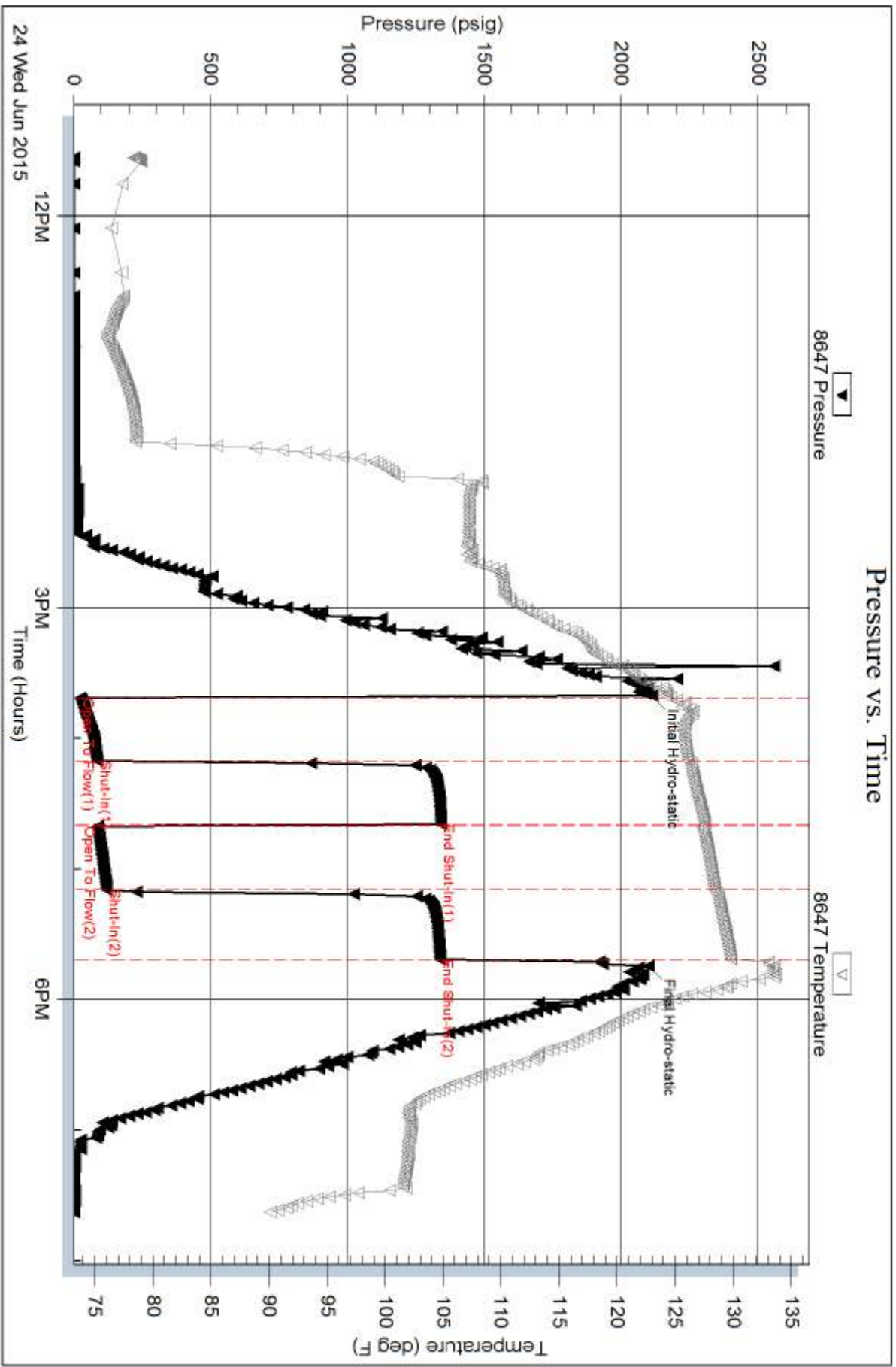
Serial #: 8647

Inside

Culbreath Oil & Gas Co., Inc.

Oils Dewey #1-4

DST Test Number: 3



Trilobite Testing, Inc

Ref. No: 62299

Printed: 2015.06.24 @ 21:17:19