



DRILL STEM TEST REPORT

Prepared For: **Stelbar Oil Corp**

1625 N Waterfront Parkway
Wichita, KS 67206-6602

ATTN: Dave Goldak

13-17s-33w Scott,KS

Ellis-Wiechman Unit #1-13

Start Date: 2015.07.28 @ 11:05:57

End Date: 2015.07.29 @ 03:57:27

Job Ticket #: 59701 DST #: 1

Trilobite Testing, Inc
1515 Commerce Parkway Hays, KS 67601
ph: 785-625-4778 fax: 785-625-5620

Printed: 2015.08.03 @ 08:48:57

Stelbar Oil Corp

Ellis-Wiechman Unit #1-13

13-17s-33w Scott,KS

DST # 1

Marmaton

2015.07.28



**TRILOBITE
TESTING, INC**

DRILL STEM TEST REPORT

Stelbar Oil Corp
1625 N Waterfront Parkway
Wichita, KS 67206-6602
ATTN: Dave Goldak

Ellis-Wiechman Unit #1-13
13-17s-33w Scott, KS
Job Ticket: 59701 **DST#: 1**
Test Start: 2015.07.28 @ 11:05:57

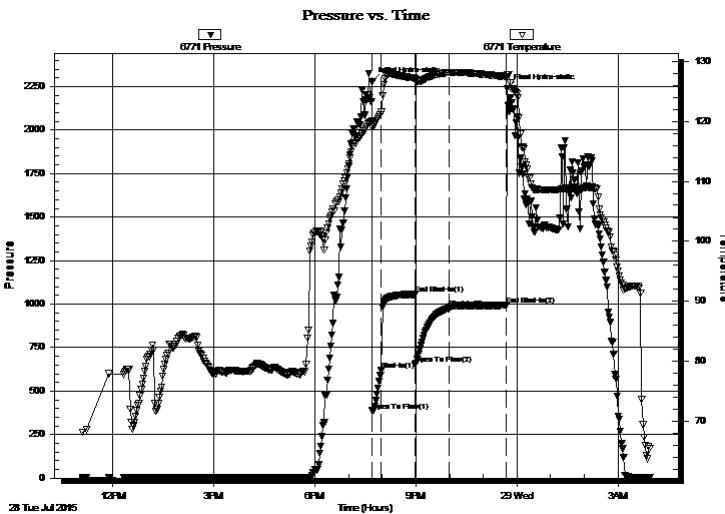
GENERAL INFORMATION:

Formation: **Marmaton**
Deviated: No Whipstock: ft (KB)
Time Tool Opened: 19:42:27
Time Test Ended: 03:57:27
Interval: **4393.00 ft (KB) To 4440.00 ft (KB) (TVD)**
Total Depth: 4440.00 ft (KB) (TVD)
Hole Diameter: 7.88 inches Hole Condition: Fair
Test Type: Conventional Bottom Hole (Initial)
Tester: Shane McBride
Unit No: 84
Reference Elevations: 3004.00 ft (KB)
2991.00 ft (CF)
KB to GR/CF: 13.00 ft

Serial #: 6771 Outside
Press@RunDepth: 975.01 psig @ 4394.00 ft (KB) Capacity: 8000.00 psig
Start Date: 2015.07.28 End Date: 2015.07.29 Last Calib.: 2015.07.29
Start Time: 11:05:57 End Time: 03:57:27 Time On Btm: 2015.07.28 @ 19:42:12
Time Off Btm: 2015.07.28 @ 23:42:27

TEST COMMENT: B.O.B. in 45 sec
Return to B.O.B. in 8 1/2 min.
B.O.B. @ open GTS in 26 min too weak to gauge
Return to B.O.B. in 8 min

PRESSURE SUMMARY



Time (Min.)	Pressure (psig)	Temp (deg F)	Annotation
0	2279.71	120.04	Initial Hydro-static
1	386.63	119.13	Open To Flow (1)
17	621.09	121.50	Shut-In(1)
77	1055.53	127.17	End Shut-In(1)
77	653.66	126.98	Open To Flow (2)
136	975.01	128.10	Shut-In(2)
240	993.03	127.43	End Shut-In(2)
241	2239.25	127.79	Final Hydro-static

Recovery

Length (ft)	Description	Volume (bbl)
30.00	g o c m 20g 35o 45m (under circ sub)	0.15
2266.00	c g o 35g 65o (reversed out)	31.51
60.00	c g o 40g 60o (dumped)	0.84

Gas Rates

	Choke (inches)	Pressure (psig)	Gas Rate (Mcf/d)



TRILOBITE TESTING, INC.

DRILL STEM TEST REPORT

Stelbar Oil Corp

Ellis-Wiechman Unit #1-13

1625 N Waterfront Parkway
Wichita, KS 67206-6602

13-17s-33w Scott, KS

ATTN: Dave Goldak

Job Ticket: 59701 **DST#: 1**

Test Start: 2015.07.28 @ 11:05:57

GENERAL INFORMATION:

Formation: **Marmaton**

Deviated: No Whipstock: ft (KB)

Time Tool Opened: 19:42:27

Time Test Ended: 03:57:27

Interval: **4393.00 ft (KB) To 4440.00 ft (KB) (TVD)**

Total Depth: 4440.00 ft (KB) (TVD)

Hole Diameter: 7.88 inches Hole Condition: Fair

Test Type: Conventional Bottom Hole (Initial)

Tester: Shane McBride

Unit No: 84

Reference Elevations: 3004.00 ft (KB)

2991.00 ft (CF)

KB to GR/CF: 13.00 ft

Serial #: 8844 Inside

Press@RunDepth: psig @ 4394.00 ft (KB)

Start Date: 2015.07.28

End Date:

2015.07.29

Start Time: 11:05:15

End Time:

03:56:30

Capacity: 8000.00 psig

Last Calib.:

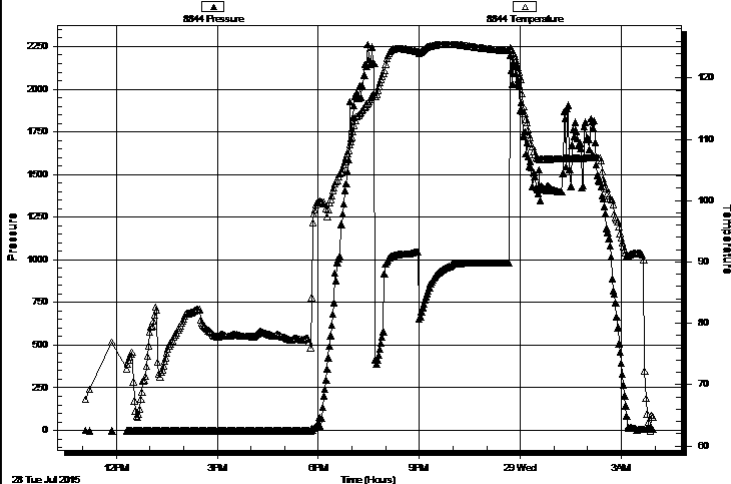
2015.07.29

Time On Btm:

Time Off Btm:

TEST COMMENT: B.O.B. in 45 sec
Return to B.O.B. in 8 1/2 min.
B.O.B. @ open GTS in 26 min too weak to gauge
Return to B.O.B. in 8 min

Pressure vs. Time



PRESSURE SUMMARY

Time (Min.)	Pressure (psig)	Temp (deg F)	Annotation

Recovery

Length (ft)	Description	Volume (bbl)
30.00	g o c m 20g 35o 45m (under circ sub)	0.15
2266.00	c g o 35g 65o (reversed out)	31.51
60.00	c g o 40g 60o (dumped)	0.84

Gas Rates

	Choke (inches)	Pressure (psig)	Gas Rate (Mcf/d)



**TRILOBITE
TESTING, INC**

DRILL STEM TEST REPORT

TOOL DIAGRAM

Stelbar Oil Corp
1625 N Waterfront Parkway
Wichita, KS 67206-6602
ATTN: Dave Goldak

Ellis-Wiechman Unit #1-13
13-17s-33w Scott, KS
Job Ticket: 59701 **DST#: 1**
Test Start: 2015.07.28 @ 11:05:57

Tool Information

Drill Pipe:	Length: 4329.00 ft	Diameter: 3.80 inches	Volume: 60.72 bbl	Tool Weight: 2500.00 lb
Heavy Wt. Pipe:	Length: 0.00 ft	Diameter: 0.00 inches	Volume: 0.00 bbl	Weight set on Packer: 25000.00 lb
Drill Collar:	Length: 60.00 ft	Diameter: 2.25 inches	Volume: 0.30 bbl	Weight to Pull Loose: 85000.00 lb
			Total Volume: 61.02 bbl	Tool Chased 0.00 ft
Drill Pipe Above KB:	27.00 ft			String Weight: Initial 60000.00 lb
Depth to Top Packer:	4393.00 ft			Final 71000.00 lb
Depth to Bottom Packer:	ft			
Interval between Packers:	47.00 ft			
Tool Length:	78.00 ft			
Number of Packers:	2	Diameter: 6.75 inches		

Tool Comments:

Tool Description

Tool Description	Length (ft)	Serial No.	Position	Depth (ft)	Accum. Lengths
Change Over Sub	1.00			4363.00	
Shut In Tool	5.00			4368.00	
Sampler	3.00			4371.00	
Hydraulic tool	5.00			4376.00	
Jars	5.00			4381.00	
Safety Joint	3.00			4384.00	
Packer	5.00			4389.00	31.00 Bottom Of Top Packer
Packer	4.00			4393.00	
Stubb	1.00			4394.00	
Recorder	0.00	6771	Outside	4394.00	
Recorder	0.00	8844	Inside	4394.00	
Perforations	7.00			4401.00	
Change Over Sub	1.00			4402.00	
Drill Pipe	32.00			4434.00	
Change Over Sub	1.00			4435.00	
Bullnose	5.00			4440.00	47.00 Bottom Packers & Anchor
Total Tool Length:	78.00				



**TRILOBITE
TESTING, INC**

DRILL STEM TEST REPORT

FLUID SUMMARY

Stelbar Oil Corp
1625 N Waterfront Parkway
Wichita, KS 67206-6602
ATTN: Dave Goldak

Ellis-Wiechman Unit #1-13
13-17s-33w Scott, KS
Job Ticket: 59701 **DST#: 1**
Test Start: 2015.07.28 @ 11:05:57

Mud and Cushion Information

Mud Type: Gel Chem	Cushion Type:	Oil API: 28 deg API
Mud Weight: 9.00 lb/gal	Cushion Length: ft	Water Salinity: 0 ppm
Viscosity: 50.00 sec/qt	Cushion Volume: bbl	
Water Loss: 8.75 in ³	Gas Cushion Type:	
Resistivity: 0.00 ohm.m	Gas Cushion Pressure: psig	
Salinity: 3600.00 ppm		
Filter Cake: 2.00 inches		

Recovery Information

Recovery Table

Length ft	Description	Volume bbl
30.00	g o c m 20g 35o 45m (under circ sub)	0.148
2266.00	c g o 35g 65o (reversed out)	31.513
60.00	c g o 40g 60o (dumped)	0.842

Total Length: 2356.00 ft Total Volume: 32.503 bbl

Num Fluid Samples: 0 Num Gas Bombs: 0 Serial #:

Laboratory Name: Laboratory Location:

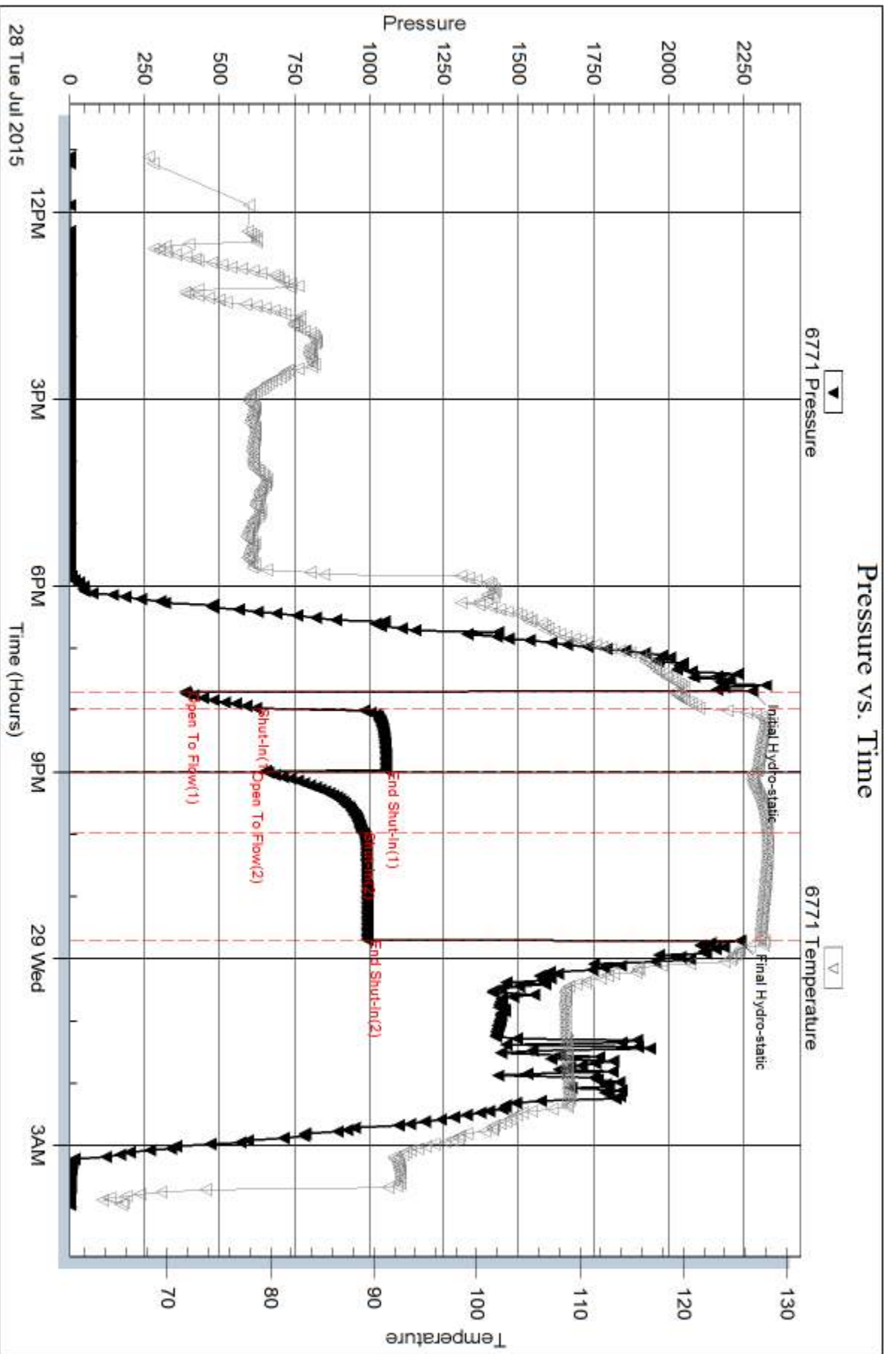
Recovery Comments: sampler 1.3 cubic ft gas 1150ml oil 730 psi

Serial #: 6771

Outside Starbar Oil Corp

13-17s-33w Scott KS

DST Test Number: 1



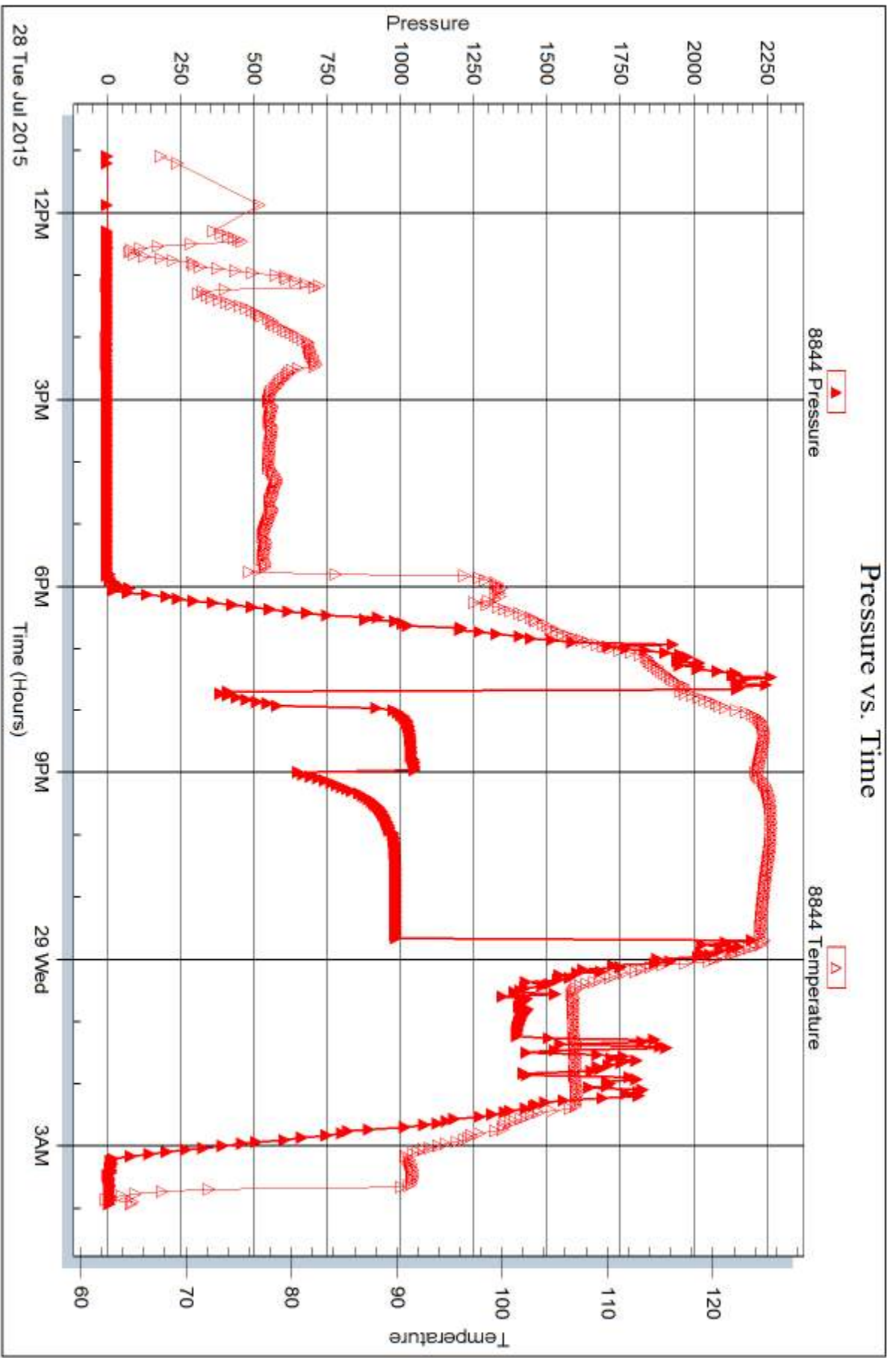
Serial #: 8844

Inside

Starbar Oil Corp

13-17s-33w Scott KS

DST Test Number: 1





DRILL STEM TEST REPORT

Prepared For: **Stelbar Oil Corp**

1625 N Waterfront Parkway
Wichita, KS 67206-6602

ATTN: Dave Goldak

13-17s-33w Scott,KS

Ellis-Wiechman Unit #1-13

Start Date: 2015.07.30 @ 06:07:18

End Date: 2015.07.30 @ 16:08:48

Job Ticket #: 45501 DST #: 2

Trilobite Testing, Inc
1515 Commerce Parkway Hays, KS 67601
ph: 785-625-4778 fax: 785-625-5620

Printed: 2015.08.03 @ 08:40:33

Stelbar Oil Corp

Ellis-Wiechman Unit #1-13

13-17s-33w Scott,KS

DST # 2

Basal sand

2015.07.30



TRILOBITE TESTING, INC

DRILL STEM TEST REPORT

Stelbar Oil Corp
 1625 N Waterfront Parkway
 Wichita, KS 67206-6602
 ATTN: Dave Goldak

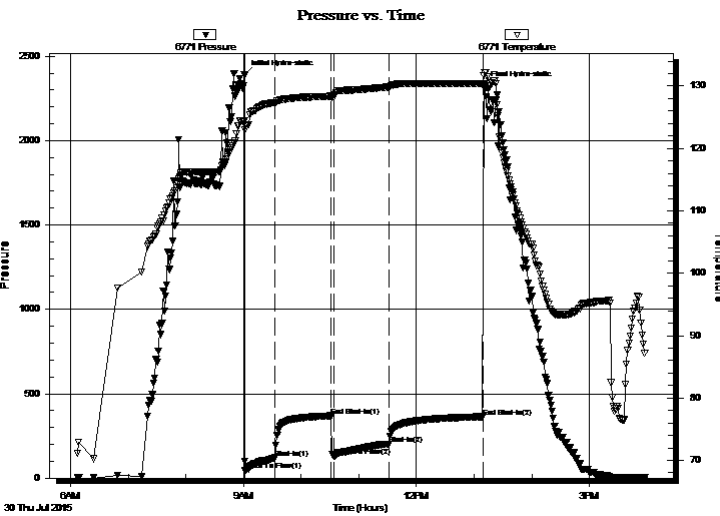
Ellis-Wiechman Unit #1-13
13-17s-33w Scott, KS
 Job Ticket: 45501 **DST#: 2**
 Test Start: 2015.07.30 @ 06:07:18

GENERAL INFORMATION:

Formation: **Basal sand**
 Deviated: No Whipstock: ft (KB)
 Time Tool Opened: 09:01:48
 Time Test Ended: 16:08:48
 Interval: **4646.00 ft (KB) To 4693.00 ft (KB) (TVD)**
 Total Depth: 4693.00 ft (KB) (TVD)
 Hole Diameter: 7.88 inches Hole Condition: Fair
 Test Type: Conventional Bottom Hole (Reset)
 Tester: Shane McBride
 Unit No: 84
 Reference Elevations: 3004.00 ft (KB)
 2991.00 ft (CF)
 KB to GR/CF: 13.00 ft

Serial #: 6771 Outside
 Press@RunDepth: 202.52 psig @ 4647.00 ft (KB) Capacity: 8000.00 psig
 Start Date: 2015.07.30 End Date: 2015.07.30 Last Calib.: 2015.07.30
 Start Time: 06:07:18 End Time: 15:57:48 Time On Btm: 2015.07.30 @ 09:00:48
 Time Off Btm: 2015.07.30 @ 13:10:03

TEST COMMENT: B.O.B. in 9 min.
 8" in return blow
 B.O.B. in 1 min GTS 53 min into final flow
 Return to bottom of bucket in 15 min



PRESSURE SUMMARY

Time (Min.)	Pressure (psig)	Temp (deg F)	Annotation
0	2389.07	124.47	Initial Hydro-static
1	45.95	123.73	Open To Flow (1)
32	120.12	127.35	Shut-In(1)
91	369.42	128.37	End Shut-In(1)
93	128.45	128.20	Open To Flow (2)
151	202.52	129.87	Shut-In(2)
249	363.24	130.39	End Shut-In(2)
250	2328.98	131.71	Final Hydro-static

Recovery

Length (ft)	Description	Volume (bbl)
30.00	g o c m 25g 30o 45m	0.15
60.00	g m c o 25g 20m 55o	0.57
375.00	c g o 20g 80o	5.26

* Recovery from multiple tests

Gas Rates

	Choke (inches)	Pressure (psig)	Gas Rate (Mcf/d)



**TRILOBITE
TESTING, INC**

DRILL STEM TEST REPORT

Stelbar Oil Corp
1625 N Waterfront Parkway
Wichita, KS 67206-6602
ATTN: Dave Goldak

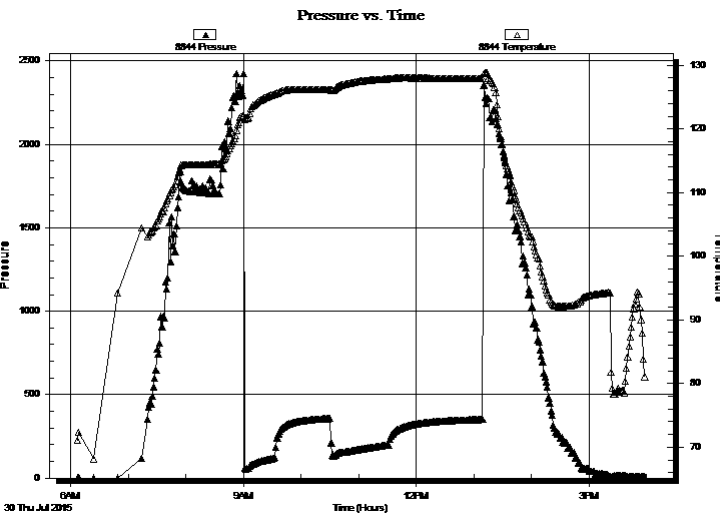
Ellis-Wiechman Unit #1-13
13-17s-33w Scott, KS
Job Ticket: 45501 **DST#: 2**
Test Start: 2015.07.30 @ 06:07:18

GENERAL INFORMATION:

Formation: **Basal sand**
Deviated: No Whipstock: ft (KB)
Time Tool Opened: 09:01:48
Time Test Ended: 16:08:48
Interval: **4646.00 ft (KB) To 4693.00 ft (KB) (TVD)**
Total Depth: 4693.00 ft (KB) (TVD)
Hole Diameter: 7.88 inches Hole Condition: Fair
Test Type: Conventional Bottom Hole (Reset)
Tester: Shane McBride
Unit No: 84
Reference Elevations: 3004.00 ft (KB)
2991.00 ft (CF)
KB to GR/CF: 13.00 ft

Serial #: 8844 Inside
Press@RunDepth: psig @ 4647.00 ft (KB) Capacity: 8000.00 psig
Start Date: 2015.07.30 End Date: 2015.07.30 Last Calib.: 2015.07.30
Start Time: 06:07:26 End Time: 15:57:41 Time On Btm:
Time Off Btm:

TEST COMMENT: B.O.B. in 9 min.
8" in return blow
B.O.B. in 1 min GTS 53 min into final flow
Return to bottom of bucket in 15 min



PRESSURE SUMMARY

Time (Min.)	Pressure (psig)	Temp (deg F)	Annotation

Recovery

Length (ft)	Description	Volume (bbl)
30.00	g o c m 25g 30o 45m	0.15
60.00	g m c o 25g 20m 55o	0.57
375.00	c g o 20g 80o	5.26

* Recovery from multiple tests

Gas Rates

Choke (inches)	Pressure (psig)	Gas Rate (Mcf/d)



**TRILOBITE
TESTING, INC**

DRILL STEM TEST REPORT

TOOL DIAGRAM

Stelbar Oil Corp
1625 N Waterfront Parkway
Wichita, KS 67206-6602
ATTN: Dave Goldak

Ellis-Wiechman Unit #1-13
13-17s-33w Scott, KS
Job Ticket: 45501 **DST#: 2**
Test Start: 2015.07.30 @ 06:07:18

Tool Information

Drill Pipe:	Length: 4584.00 ft	Diameter: 3.80 inches	Volume: 64.30 bbl	Tool Weight: 2500.00 lb
Heavy Wt. Pipe:	Length: 0.00 ft	Diameter: 0.00 inches	Volume: 0.00 bbl	Weight set on Packer: 25000.00 lb
Drill Collar:	Length: 60.00 ft	Diameter: 2.25 inches	Volume: 0.30 bbl	Weight to Pull Loose: 92000.00 lb
			<u>Total Volume: 64.60 bbl</u>	Tool Chased 0.00 ft
Drill Pipe Above KB:	29.00 ft			String Weight: Initial 66000.00 lb
Depth to Top Packer:	4646.00 ft			Final 71000.00 lb
Depth to Bottom Packer:	ft			
Interval between Packers:	47.00 ft			
Tool Length:	78.00 ft			
Number of Packers:	2	Diameter: 6.75 inches		

Tool Comments:

Tool Description

Tool Description	Length (ft)	Serial No.	Position	Depth (ft)	Accum. Lengths
Change Over Sub	1.00			4616.00	
Shut In Tool	5.00			4621.00	
Sampler	3.00			4624.00	
Hydraulic tool	5.00			4629.00	
Jars	5.00			4634.00	
Safety Joint	3.00			4637.00	
Packer	5.00			4642.00	31.00 Bottom Of Top Packer
Packer	4.00			4646.00	
Stubb	1.00			4647.00	
Recorder	0.00	6771	Outside	4647.00	
Recorder	0.00	8844	Inside	4647.00	
Perforations	7.00			4654.00	
Change Over Sub	1.00			4655.00	
Drill Pipe	32.00			4687.00	
Change Over Sub	1.00			4688.00	
Bullnose	5.00			4693.00	47.00 Bottom Packers & Anchor
Total Tool Length:	78.00				



**TRILOBITE
TESTING, INC**

DRILL STEM TEST REPORT

FLUID SUMMARY

Stelbar Oil Corp
1625 N Waterfront Parkway
Wichita, KS 67206-6602
ATTN: Dave Goldak

Ellis-Wiechman Unit #1-13
13-17s-33w Scott, KS
Job Ticket: 45501 **DST#: 2**
Test Start: 2015.07.30 @ 06:07:18

Mud and Cushion Information

Mud Type:	Gel Chem	Cushion Type:		Oil API:	27 deg API
Mud Weight:	9.00 lb/gal	Cushion Length:	ft	Water Salinity:	0 ppm
Viscosity:	65.00 sec/qt	Cushion Volume:	bbbl		
Water Loss:	7.97 in ³	Gas Cushion Type:			
Resistivity:	0.00 ohm.m	Gas Cushion Pressure:	psig		
Salinity:	3400.00 ppm				
Filter Cake:	2.00 inches				

Recovery Information

Recovery Table

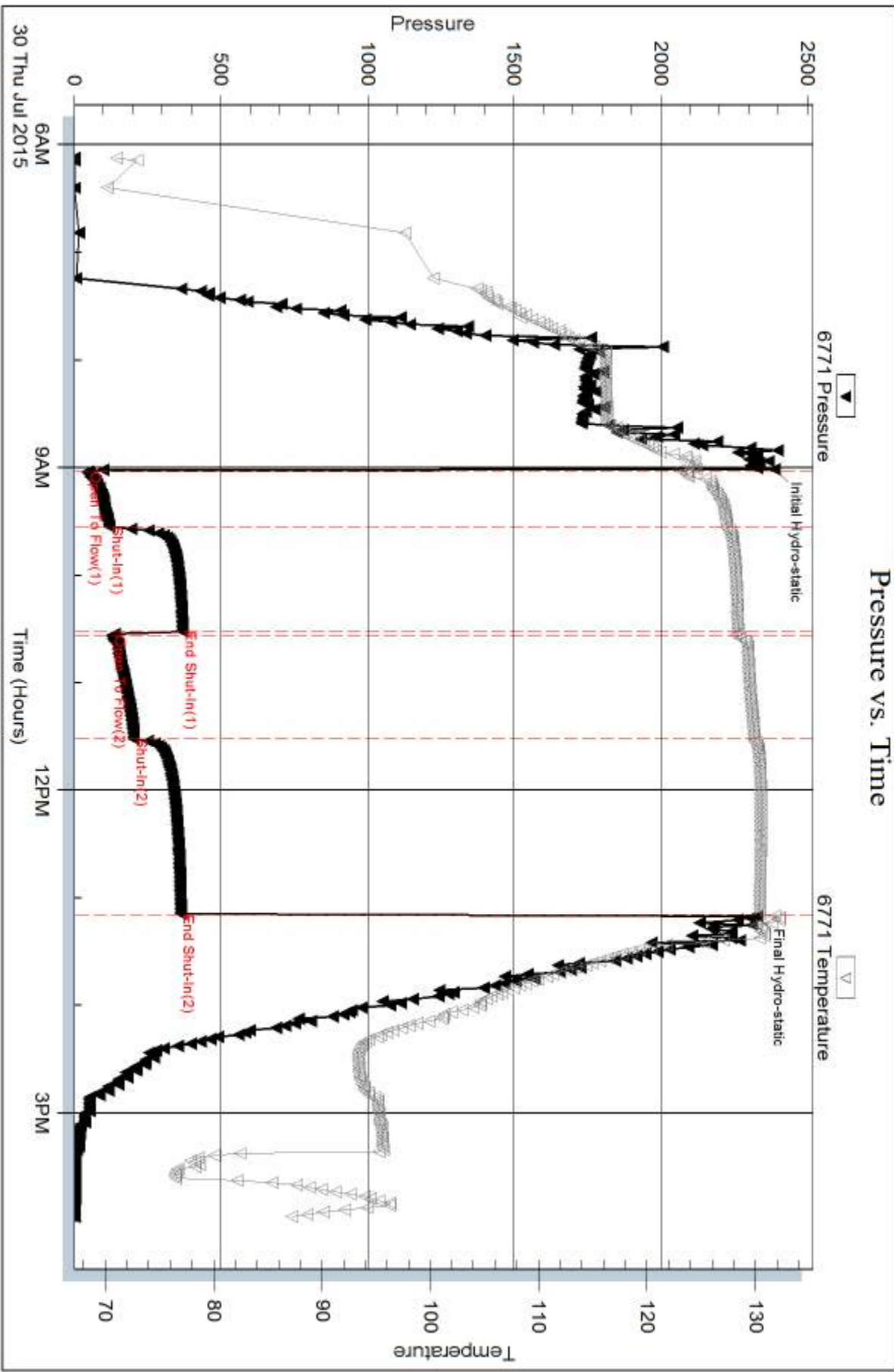
Length ft	Description	Volume bbbl
30.00	g o c m 25g 30o 45m	0.148
60.00	g m c o 25g 20m 55o	0.568
375.00	c g o 20g 80o	5.260

Total Length: 465.00 ft Total Volume: 5.976 bbl

Num Fluid Samples: 0 Num Gas Bombs: 0 Serial #:

Laboratory Name: Laboratory Location:

Recovery Comments: sampler .6 cubic ft gas 1500ml oil trace of mud 210 psi.



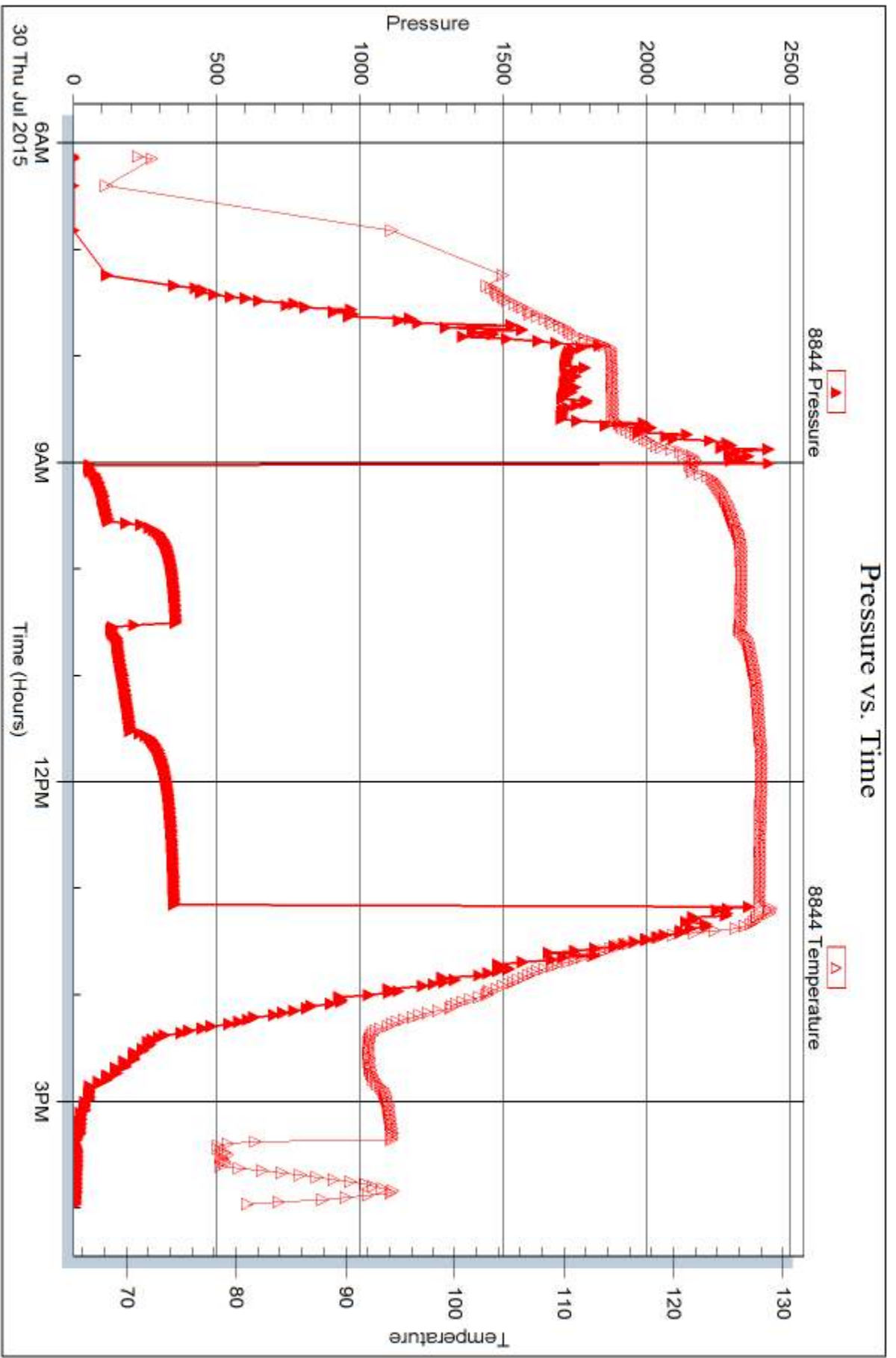
Serial #: 8844

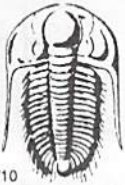
Inside

Stelbar Oil Corp

13-17s-33w Scott KS

DST Test Number: 2





TRILOBITE TESTING INC.

1515 Commerce Parkway • Hays, Kansas 67601

Test Ticket

NO. 59701

4/10

Well Name & No. Elk's Wierchman #175 Test No. #1 Date 7/28/15
 Company Stelbar Oil Corp Elevation 3004 KB 2991 GL
 Address 1625 North Waterfront Parkway, Wichita KS 67206-6602
 Co. Rep / Geo Dave Goldak Rig Stirling #5
 Location: Sec. 13 Twp. 17S Rge. 33W Co. Scott State KS

Interval Tested 4393 4440 Zone Tested Marmaton
 Anchor Length 47 Drill Pipe Run 4329' Mud Wt. 9.4
 Top Packer Depth 4388 Drill Collars Run 60' Vis 50
 Bottom Packer Depth 4393 Wt. Pipe Run --- WL 8.8
 Total Depth 4440 Chlorides 3600 ppm System LCM #2

Blow Description B.O.B. in 45 sec.
Return to B.O.B. in 8 1/2 min
B.O.B @ open G.T.S. in 2 min to weak to gauge
Return to B.O.B. in 8 min

Rec	Feet of		%gas	%oil	%water	%mud
<u>60</u>	<u>CGO (Dumped)</u>	<u>40</u>	<u>60</u>	<u>60</u>		
<u>2266'</u>	<u>CGO</u>	<u>35</u>	<u>65</u>	<u>65</u>		
<u>30'</u>	<u>glocm</u>	<u>20</u>	<u>35</u>	<u>35</u>	<u>45</u>	
Rec	Feet of		%gas	%oil	%water	%mud
Rec	Feet of		%gas	%oil	%water	%mud

Rec Total 2356' BHT 125° Gravity 28 API RW --- @ --- °F Chlorides --- ppm
 (A) Initial Hydrostatic 2279 Test 1150 T-On Location 10:15 16:45
 (B) First Initial Flow 386 Jars 250 T-Started 11:05
 (C) First Final Flow 621 Safety Joint 75 T-Open 19:39
 (D) Initial Shut-In 1055 Circ Sub 450.00 T-Pulled 23:24
 (E) Second Initial Flow 653 Hourly Standby 1.25h 100 T-Out 04:00
 (F) Second Final Flow 975 Mileage 22 RT 44
 (G) Final Shut-In 993 Sampler 250
 (H) Final Hydrostatic 2239 Straddle
 Shale Packer
 Extra Packer
 Extra Recorder
 Day Standby
 Accessibility

Comments Went home WOO due to hole conditions

Initial Open 15
 Initial Shut-In 60
 Final Flow 60
 Final Shut-In 90
 Sub Total 1919

Approved By [Signature] Our Representative [Signature]

Trilobite Testing Inc. shall not be liable for damaged of any kind of the property or personnel of the one for whom a test is made, or for any loss suffered or sustained, directly or indirectly, through the use of its equipment, or its statements or opinion concerning the results of any test, tools lost or damaged in the hole shall be paid for at cost by the party for whom the test is made.



TRILOBITE TESTING, INC.

1515 Commerce Parkway • Hays, Kansas 67601

FLUID SAMPLER DATA

Ticket No. 59701 Date 7/29/13
 Company Name Stelbar Oil Corp
 Lease Ellis Wrenchwell #1-15 Test No. #1 (4393-4440)
 County Scott, KS Sec. 13 Twp. 17S Rng. 33W

SAMPLER RECOVERY

Gas 1.3 cubic ft ~~ML~~
 Oil 1150 mL ML
 Mud ML
 Water ML
 Other ML
 Pressure 730 PSI ~~ML~~
 Total 1.3 cubic ft gas 1150 mL oil ML

PIT MUD ANALYSIS

Chlorides 3600 ppm.
 Resistivity ohms @ F
 Viscosity 50
 Mud Weight 9.4
 Filtrate 8.8
 Other LCM #2

SAMPLER ANALYSIS

~~Resistivity ohms @ F
 Chlorides ppm.
 Gravity 28 corrected @60F~~

PIPE RECOVERY

~~TOP
 Resistivity ohms @ F
 Chlorides ppm.
 MIDDLE
 Resistivity ohms @ F
 Chlorides ppm.
 BOTTOM
 Resistivity ohms @ F
 Chlorides ppm.~~



TRILOBITE TESTING INC.

P.O. Box 1733 • Hays, Kansas 67601

Test Ticket

NO. 45501

4/10

Well Name & No. Elkhorn Wrenchman Unit #1-13 Test No. #2 Date 7/30/15
 Company Selbay Oil Corp Elevation 3004 KB 2991 GL
 Address 1425 N. Waterfront Parkway, Wichita, KS 67206-6602
 Co. Rep / Geo. Dave Goldark Rig Starling #5
 Location: Sec. 13 Twp. 17s Rge. 33w Co. Scott State Ks

Interval Tested 4646 4693 Zone Tested Basal Sand
 Anchor Length 47 Drill Pipe Run 4584 Mud Wt. 9.2
 Top Packer Depth 4641 Drill Collars Run 60' Vis 65
 Bottom Packer Depth 4646 Wt. Pipe Run --- WL 9.0
 Total Depth 4693 Chlorides 3400 ppm System LCM #2

Blow Description B.O.B. in 9 min
8" in Return blow
B.O.B. in 1 min. (G.T.S. 53 min on Final Flow)
Return to B.O.B. in 15 min.

Rec	Feet of	%gas	%oil	%water	%mud
375	cgo	20	80		
60	gmc0	25	55		20
30	gocm	25	30		45
		%gas	%oil	%water	%mud
		%gas	%oil	%water	%mud

Rec Total 465' BHT 132° Gravity 27 API RW --- @ --- F Chlorides --- ppm
 Test 1150
 Jars 250
 Safety Joint 75
 Circ Sub n/c
 Hourly Standby
 Mileage 22
 Sampler 250
 Straddle
 Shale Packer
 Extra Packer
 Extra Recorder
 Day Standby
 Accessibility
 Sub Total 1747

T-On Location 05:25
 T-Started 06:07
 T-Open 09:01
 T-Pulled 13:01
 T-Out 16:08
 Comments Released 3' headed
Tools @ 16:45
7/30/15
 Ruined Shale Packer
 Ruined Packer
 Extra Copies
 Sub Total 0
 Total 1747
 MP/DST Disc't ---

Approved By [Signature] Our Representative [Signature]

Trilobite Testing Inc. shall not be liable for damaged or loss of any kind of the property or personnel of the one for whom a test is made, or for any loss suffered or sustained, directly or indirectly, through the use of equipment, or its statements or opinion concerning the results of any test, tools lost or damaged in the hole shall be paid for at cost by the party for whom the test is made.



TRILOBITE TESTING, INC.

1515 Commerce Parkway • Hays, Kansas 67601

FLUID SAMPLER DATA

Ticket No. 43501 Date 7/30/15
 Company Name Sheffer OH Corp
 Lease Ellis Wrenchman #1-13 Test No. #2 (Basal Sand 4646 - 4693)
 County Scott, KS Sec. 13 Twp. 17s Rng. 33w

SAMPLER RECOVERY

Gas 0.6 cubic ft ML
 Oil 1500 ml ML
 Mud Trace ML
 Water _____ ML
 Other _____ ML
 Pressure 210 PSI ML
 Total 0.6 cubic ft gas 1500 ml oil ML

PIT MUD ANALYSIS

Chlorides 3400 ppm.
 Resistivity _____ ohms @ _____ F
 Viscosity 65
 Mud Weight 9.2
 Filtrate 8.0
 Other LLM #2

SAMPLER ANALYSIS

Resistivity _____ ohms @ _____ F
 Chlorides _____ ppm.
 Gravity 27 corrected @60F

PIPE RECOVERY

~~TOP
 Resistivity _____ ohms @ _____ F
 Chlorides _____ ppm.
 MIDDLE
 Resistivity _____ ohms @ _____ F
 Chlorides _____ ppm.
 BOTTOM
 Resistivity _____ ohms @ _____ F
 Chlorides _____ ppm.~~