



**TRILOBITE
TESTING, INC.**

DRILL STEM TEST REPORT

Woolsey Operating Co.

23/25S/21W Ford, KS

125 N Market STE 1000
Wichita, KS 67202

Hubbell #2

Job Ticket: 64102

DST#: 4

ATTN: Bill Klaver

Test Start: 2017.10.29 @ 15:14:00

GENERAL INFORMATION:

Formation: **Cherokee**

Deviated: No Whipstock: 2322.00 ft (KB)

Time Tool Opened: 18:22:00

Time Test Ended: 23:27:24

Test Type: Conventional Bottom Hole (Initial)

Tester: Chris Hagman

Unit No: 75

Interval: 4691.00 ft (KB) To 4726.00 ft (KB) (TVD)

Reference Elevations: 2322.00 ft (KB)

Total Depth: 4726.00 ft (KB) (TVD)

2310.00 ft (CF)

Hole Diameter: 7.88 inches Hole Condition: Good

KB to GR/CF: 12.00 ft

Serial #: 8289 Inside

Press@RunDepth: 25.29 psig @ 4723.00 ft (KB)

Capacity: 8000.00 psig

Start Date: 2017.10.29

End Date:

2017.10.29

Last Calib.: 1899.12.30

Start Time: 15:14:02

End Time:

23:27:25

Time On Btm: 2017.10.29 @ 18:21:45

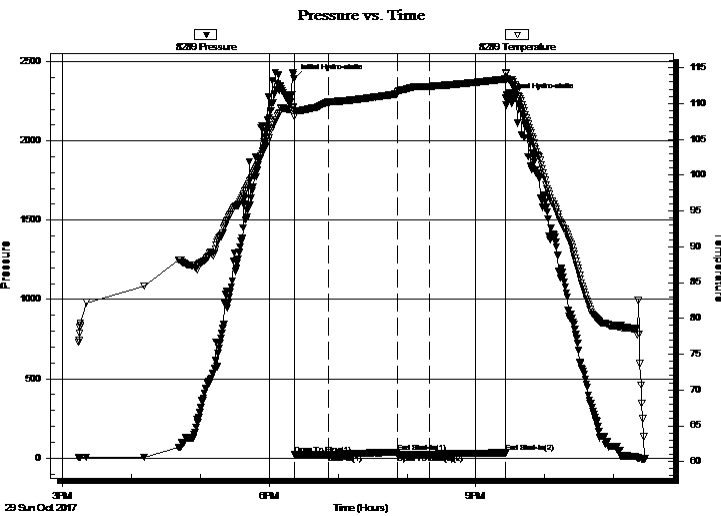
Time Off Btm: 2017.10.29 @ 21:26:15

TEST COMMENT: IF: weak surface blow, died 4 min.

IS: No blow back

FF: No blow

FS: No blow back



PRESSURE SUMMARY

Time (Min.)	Pressure (psig)	Temp (deg F)	Annotation
0	2394.64	109.50	Initial Hydro-static
1	21.11	108.12	Open To Flow (1)
30	25.35	110.19	Shut-In(1)
90	35.90	111.33	End Shut-In(1)
90	25.40	111.34	Open To Flow (2)
119	25.29	112.39	Shut-In(2)
185	33.04	113.41	End Shut-In(2)
185	2270.66	114.34	Final Hydro-static

Recovery

Length (ft)	Description	Volume (bbl)
5.00	100%M	0.02

Gas Rates

Choke (inches)	Pressure (psig)	Gas Rate (MMcf/d)



TRILOBITE TESTING, INC.

DRILL STEM TEST REPORT

Woolsey Operating Co.
 125 N Market STE 1000
 Wichita, KS 67202
 ATTN: Bill Klaver

23/25S/21W Ford, KS
Hubbell #2
 Job Ticket: 64102 **DST#: 4**
 Test Start: 2017.10.29 @ 15:14:00

GENERAL INFORMATION:

Formation: **Cherokee**
 Deviated: No Whipstock: 2322.00 ft (KB)
 Time Tool Opened: 18:22:00
 Time Test Ended: 23:27:24
Interval: 4691.00 ft (KB) To 4726.00 ft (KB) (TVD)
 Total Depth: 4726.00 ft (KB) (TVD)
 Hole Diameter: 7.88 inches Hole Condition: Good

Test Type: Conventional Bottom Hole (Initial)
 Tester: Chris Hagman
 Unit No: 75
 Reference Elevations: 2322.00 ft (KB)
 2310.00 ft (CF)
 KB to GR/CF: 12.00 ft

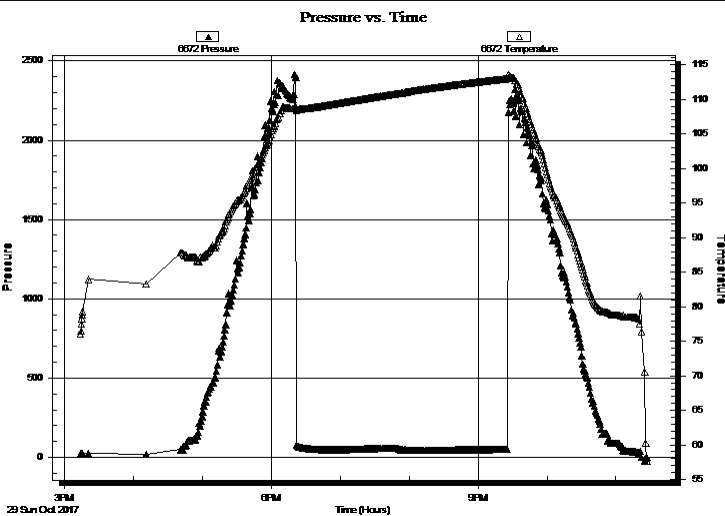
Serial #: 6672

Outside

Press@RunDepth: psig @ 4723.00 ft (KB)
 Start Date: 2017.10.29 End Date: 2017.10.29
 Start Time: 15:14:02 End Time: 23:27:40

Capacity: 8000.00 psig
 Last Calib.: 1899.12.30
 Time On Btm:
 Time Off Btm:

TEST COMMENT: IF: weak surface blow, died 4 min.
 IS: No blow back
 FF: No blow
 FS: No blow back



PRESSURE SUMMARY

Time (Min.)	Pressure (psig)	Temp (deg F)	Annotation

Recovery

Length (ft)	Description	Volume (bbl)
5.00	100%M	0.02

Gas Rates

	Choke (inches)	Pressure (psig)	Gas Rate (MMcf/d)

