



**TRILOBITE
TESTING, INC**

DRILL STEM TEST REPORT

O'Brien Resources LLC

S34-T18S-R17W

PO Box 6149
Shreveport LA
71136+6149
ATTN: Steve Harris/ James

Vondracek Et Al 34#1

Job Ticket: 63479 **DST#: 1**
Test Start: 2016.09.22 @ 15:10:00

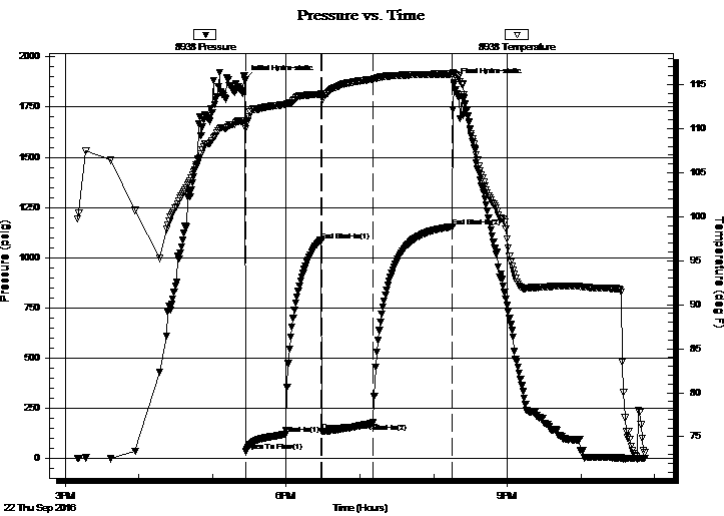
GENERAL INFORMATION:

Formation: **Arbuckle**
 Deviated: No Whipstock: ft (KB)
 Time Tool Opened: 17:27:00
 Time Test Ended: 22:52:30
 Interval: **3780.00 ft (KB) To 3849.00 ft (KB) (TVD)**
 Total Depth: 3849.00 ft (KB) (TVD)
 Hole Diameter: 7.88 inches Hole Condition: Fair
 Test Type: Conventional Bottom Hole (Initial)
 Tester: Spencer J. Staab
 Unit No: 84
 Reference Elevations: 2103.00 ft (KB)
 2090.00 ft (CF)
 KB to GR/CF: 13.00 ft

Serial #: 8938

Press@RunDepth: 177.30 psig @ ft (KB) Capacity: 8000.00 psig
 Start Date: 2016.09.22 End Date: 2016.09.22 Last Calib.: 2016.09.22
 Start Time: 15:10:15 End Time: 22:52:30 Time On Btm: 2016.09.22 @ 17:26:30
 Time Off Btm: 2016.09.22 @ 20:16:30

TEST COMMENT: IF-30-BOB in 14 minutes
 IS-30-Weak blow ; built to 1 inch
 FF-45-BOB in 11 minutes
 FS-60-Weak blow ; built to 1 inch, died



PRESSURE SUMMARY

Time (Min.)	Pressure (psig)	Temp (deg F)	Annotation
0	1885.78	110.92	Initial Hydro-static
1	34.65	109.96	Open To Flow (1)
33	121.93	112.73	Shut-In(1)
62	1085.37	113.91	End Shut-In(1)
63	133.80	113.51	Open To Flow (2)
105	177.30	115.60	Shut-In(2)
169	1153.50	116.21	End Shut-In(2)
170	1870.78	116.29	Final Hydro-static

Recovery

Length (ft)	Description	Volume (bbl)
200.00	CO	1.14
300.00	MCO 30%M 70%O	4.25

Gas Rates

	Choke (inches)	Pressure (psig)	Gas Rate (Mcf/d)



TRILOBITE TESTING, INC

DRILL STEM TEST REPORT

O'Brien Resources LLC

S34-T18S-R17W

PO Box 6149
Shreveport LA
71136+6149
ATTN: Steve Harris/ James

Vondracek Et Al 34#1

Job Ticket: 63479 **DST#: 1**
Test Start: 2016.09.22 @ 15:10:00

GENERAL INFORMATION:

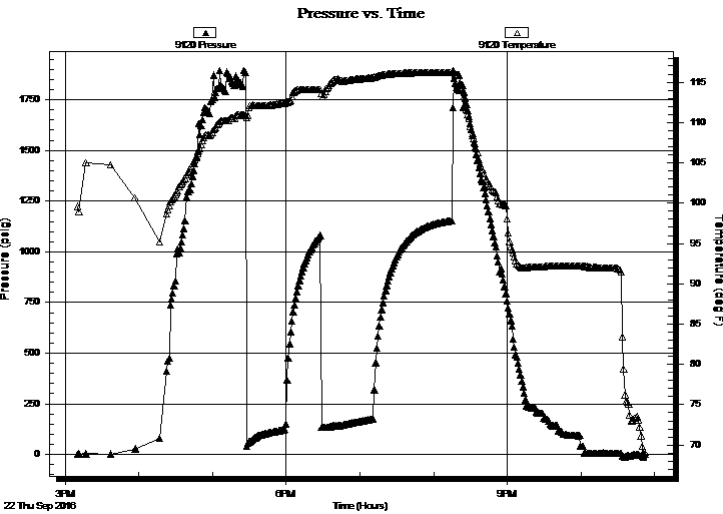
Formation: **Arbuckle**
 Deviated: No Whipstock: ft (KB)
 Time Tool Opened: 17:27:00
 Time Test Ended: 22:52:30
 Interval: **3780.00 ft (KB) To 3849.00 ft (KB) (TVD)**
 Total Depth: 3849.00 ft (KB) (TVD)
 Hole Diameter: 7.88 inches Hole Condition: Fair

Test Type: Conventional Bottom Hole (Initial)
 Tester: Spencer J. Staab
 Unit No: 84
 Reference Elevations: 2103.00 ft (KB)
 2090.00 ft (CF)
 KB to GR/CF: 13.00 ft

Serial #: 9120

Press@RunDepth: psig @ ft (KB) Capacity: 8000.00 psig
 Start Date: 2016.09.22 End Date: 2016.09.22 Last Calib.: 2016.09.22
 Start Time: 15:10:15 End Time: 22:52:30 Time On Btm:
 Time Off Btm:

TEST COMMENT: IF-30-BOB in 14 minutes
 IS-30-Weak blow ; built to 1 inch
 FF-45-BOB in 11 minutes
 FS-60-Weak blow ; built to 1 inch, died



PRESSURE SUMMARY

Time (Min.)	Pressure (psig)	Temp (deg F)	Annotation

Recovery

Length (ft)	Description	Volume (bbl)
200.00	CO	1.14
300.00	MCO 30%M 70%O	4.25

Gas Rates

Choke (inches)	Pressure (psig)	Gas Rate (Mcf/d)



**TRILOBITE
TESTING, INC**

DRILL STEM TEST REPORT

FLUID SUMMARY

O'Brien Resources LLC

S34-T18S-R17W

PO Box 6149
Shreveport LA
71136+6149

Vondracek Et Al 34#1

Job Ticket: 63479

DST#: 1

ATTN: Steve Harris/ James

Test Start: 2016.09.22 @ 15:10:00

Mud and Cushion Information

Mud Type: Gel Chem

Cushion Type:

Oil API:

51 deg API

Mud Weight: 9.00 lb/gal

Cushion Length:

ft

Water Salinity:

ppm

Viscosity: 47.00 sec/qt

Cushion Volume:

bbbl

Water Loss: 8.79 in³

Gas Cushion Type:

Resistivity: ohm.m

Gas Cushion Pressure:

psig

Salinity: 4800.00 ppm

Filter Cake: inches

Recovery Information

Recovery Table

Length ft	Description	Volume bbbl
200.00	CO	1.141
300.00	MCO 30%M 70%O	4.253

Total Length: 500.00 ft

Total Volume: 5.394 bbl

Num Fluid Samples: 0

Num Gas Bombs: 0

Serial #:

Laboratory Name:

Laboratory Location:

Recovery Comments:

