



**TRILOBITE TESTING, INC.**

# DRILL STEM TEST REPORT

Culbreath Oil & Gas Company

**21-14-34 Logan, Ks**

3501 S Yale Ave.  
Tulsa, Ok 74135

**KS Baker 2-21**

ATTN: Larry Nicholson

Job Ticket: 65514

**DST#: 2**

Test Start: 2016.09.22 @ 17:38:33

## GENERAL INFORMATION:

Formation: **Marmaton B-C**

Deviated: No Whipstock: ft (KB)

Time Tool Opened: 19:34:03

Time Test Ended: 23:31:33

Test Type: Conventional Bottom Hole (Reset)

Tester: Brandon Turley

Unit No: 79

**Interval: 4396.00 ft (KB) To 4443.00 ft (KB) (TVD)**

Total Depth: 4443.00 ft (KB) (TVD)

Hole Diameter: 7.88 inches Hole Condition: Good

Reference Elevations: 3099.00 ft (KB)

3089.00 ft (CF)

KB to GR/CF: 10.00 ft

**Serial #: 8166 Outside**

Press@RunDepth: 24.12 psig @ 4401.00 ft (KB)

Start Date: 2016.09.22

End Date: 2016.09.22

Start Time: 17:38:38

End Time: 23:31:32

Capacity: 8000.00 psig

Last Calib.: 2016.09.22

Time On Btm: 2016.09.22 @ 19:32:33

Time Off Btm: 2016.09.22 @ 21:35:33

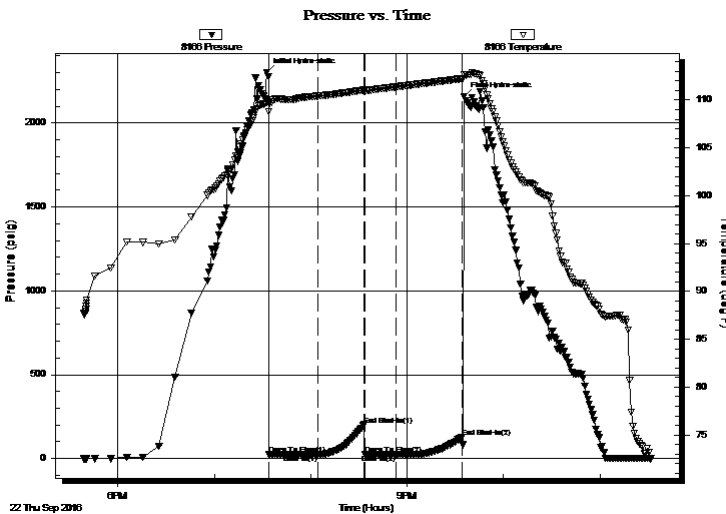
TEST COMMENT: IF: 1/2 blow died in 12 min.

IS: No return.

FF: No blow.

FS: No return.

## PRESSURE SUMMARY



Time (Min.)	Pressure (psig)	Temp (deg F)	Annotation
0	2302.28	109.79	Initial Hydro-static
2	23.71	108.77	Open To Flow (1)
32	23.71	110.43	Shut-In(1)
61	201.25	111.05	End Shut-In(1)
61	23.93	110.98	Open To Flow (2)
81	24.12	111.38	Shut-In(2)
122	128.30	112.23	End Shut-In(2)
123	2159.95	112.63	Final Hydro-static

## Recovery

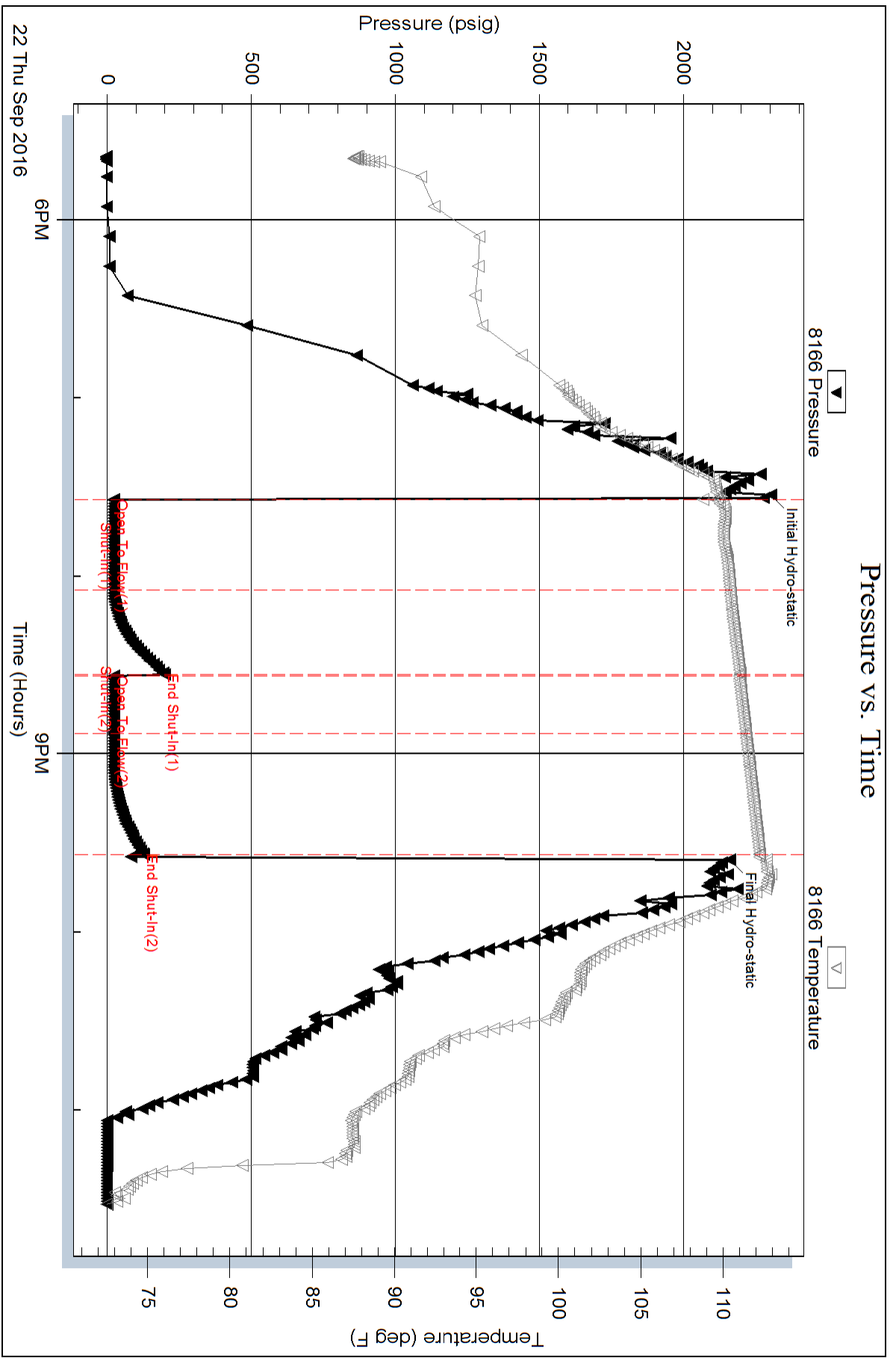
Length (ft)	Description	Volume (bbl)
10.00	mud 100%m	0.14

## Gas Rates

Choke (inches)	Pressure (psig)	Gas Rate (Mcf/d)

\* Recovery from multiple tests





Serial #: 8875

Inside

Culbreath Oil & Gas Company

KS Baker 2-21

DST Test Number: 2

