



TRILOBITE TESTING, INC.

DRILL STEM TEST REPORT

Culbreath Oil & Gas Co, Inc

5 10s 26w Sheridan, Ks

301 S Yale Ave.
Tulsa, Ok 74135

Riedel #1-5

Job Ticket: 63454

DST#: 4

ATTN: Richard Bell

Test Start: 2016.10.25 @ 20:20:00

GENERAL INFORMATION:

Formation: **LKC- E-F**

Deviated: No Whipstock: ft (KB)

Time Tool Opened: 22:17:00

Time Test Ended: 04:00:45

Test Type: Conventional Bottom Hole (Reset)

Tester: Bradley Walter

Unit No: 78

Interval: 3920.00 ft (KB) To 3943.00 ft (KB) (TVD)

Reference Elevations: 2653.00 ft (KB)

Total Depth: 3943.00 ft (KB) (TVD)

2643.00 ft (CF)

Hole Diameter: 7.88 inches Hole Condition: Good

KB to GR/CF: 10.00 ft

Serial #: 8365

Inside

Press @ Run Depth: 164.69 psig @ 3921.00 ft (KB)

Capacity: 8000.00 psig

Start Date: 2016.10.25

End Date:

2016.10.26

Last Calib.:

2016.10.26

Start Time: 20:20:05

End Time:

04:00:44

Time On Btm:

2016.10.25 @ 22:16:30

Time Off Btm:

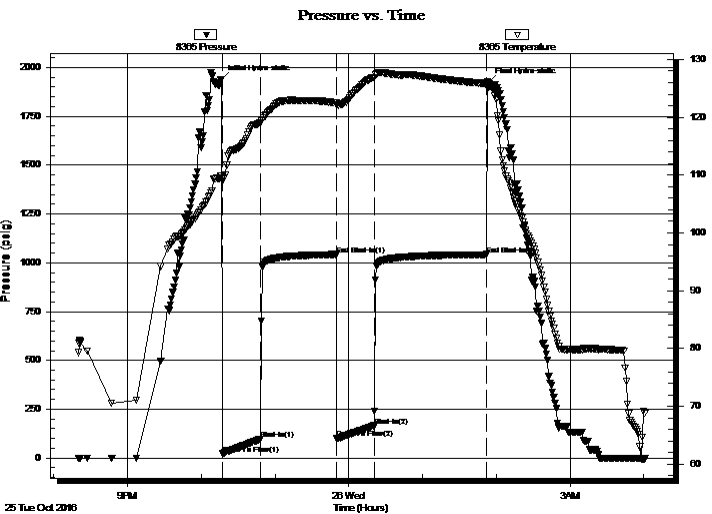
2016.10.26 @ 01:53:30

TEST COMMENT: IF: BOB @ 20 minutes.

IS: Surface return. died @ 20 minutes.

FF: 9" blow.

FS: No return.



PRESSURE SUMMARY

Time (Min.)	Pressure (psig)	Temp (deg F)	Annotation
0	1940.03	109.81	Initial Hydro-static
1	21.33	108.99	Open To Flow (1)
32	95.25	119.02	Shut-In(1)
94	1042.67	122.49	End Shut-In(1)
94	99.36	122.21	Open To Flow (2)
124	164.69	126.93	Shut-In(2)
216	1042.28	125.87	End Shut-In(2)
217	1923.13	125.22	Final Hydro-static

Recovery

Length (ft)	Description	Volume (bbl)
300.00	somcw 2o 10m 88w	4.21
20.00	oil 100o	0.28
0.00	940 GIP	0.00

* Recovery from multiple tests

Gas Rates

Choke (inches)	Pressure (psig)	Gas Rate (Mcf/d)



**TRILOBITE
TESTING, INC.**

DRILL STEM TEST REPORT

FLUID SUMMARY

Culbreath Oil & Gas Co, Inc

5 10s 26w Sheridan, Ks

301 S Yale Ave.
Tulsa, Ok 74135

Riedel #1-5

Job Ticket: 63454

DST#: 4

ATTN: Richard Bell

Test Start: 2016.10.25 @ 20:20:00

Mud and Cushion Information

Mud Type: Gel Chem

Cushion Type:

Oil API:

0 deg API

Mud Weight: 9.00 lb/gal

Cushion Length:

ft

Water Salinity:

0 ppm

Viscosity: 52.00 sec/qt

Cushion Volume:

bbbl

Water Loss: 8.79 in³

Gas Cushion Type:

Resistivity: ohm.m

Gas Cushion Pressure:

psig

Salinity: 1000.00 ppm

Filter Cake: 1.00 inches

Recovery Information

Recovery Table

Length ft	Description	Volume bbl
300.00	somcw 2o 10m 88w	4.208
20.00	oil 100o	0.281
0.00	940 GIP	0.000

Total Length: 320.00 ft Total Volume: 4.489 bbl

Num Fluid Samples: 0

Num Gas Bombs: 0

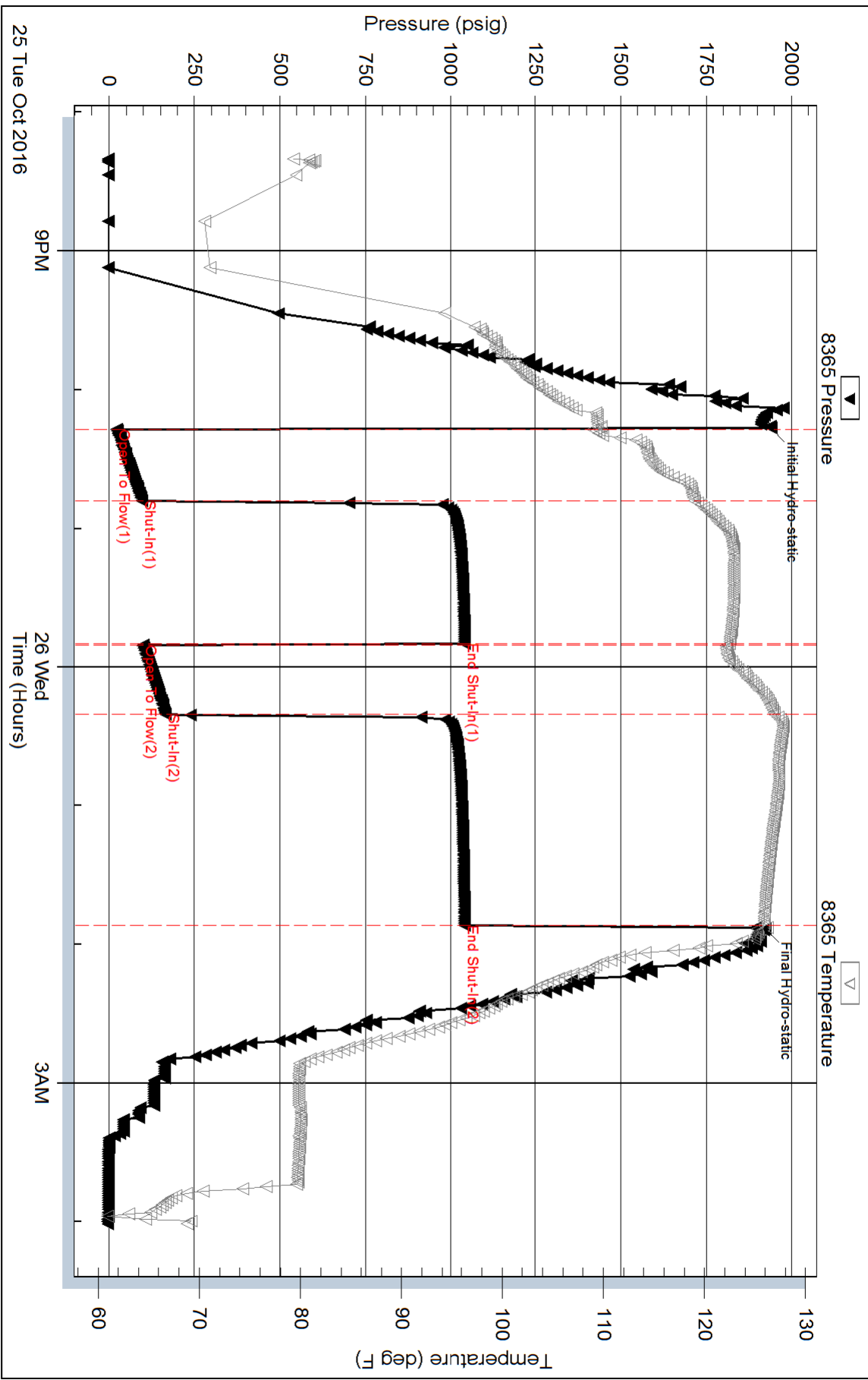
Serial #:

Laboratory Name:

Laboratory Location:

Recovery Comments: rw is .259 @ 61F = 31000ppm

Pressure vs. Time



Serial #: 8845

Outside Culbreath Oil & Gas Co, Inc

Riedel #1-5

DST Test Number: 4

