



DRILL STEM TEST REPORT

Prepared For: **American Warrior Inc**

3118 Cummings Rd
Garden City, KS 67846

ATTN: Kevin Timson

Hicks A 1-24

24-25-32 Finney, KS

Start Date: 2017.01.03 @ 05:02:06

End Date: 2017.01.03 @ 10:51:06

Job Ticket #: 65650 DST #: 1

Trilobite Testing, Inc
PO Box 362 Hays, KS 67601
ph: 785-625-4778 fax: 785-625-5620

Printed: 2017.01.10 @ 10:00:23



TRILOBITE TESTING, INC.

DRILL STEM TEST REPORT

American Warrior Inc
 3118 Cummings Rd
 Garden City, KS 67846
 ATTN: Kevin Timson

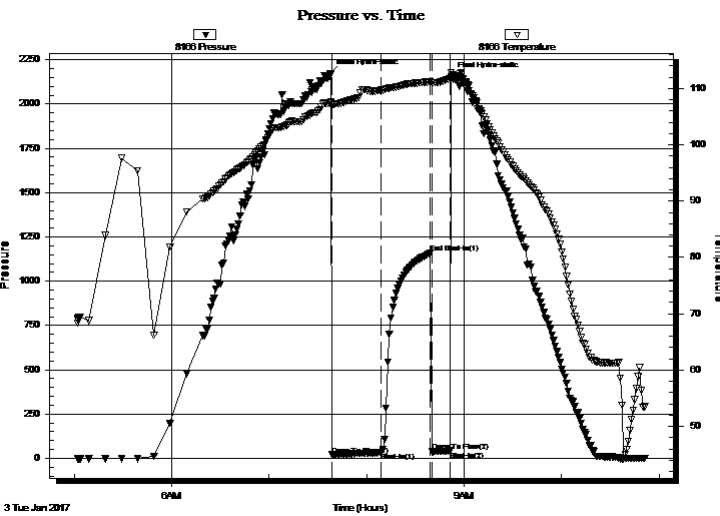
24-25-32 Finney, KS
Hicks A 1-24
 Job Ticket: 65650 **DST#: 1**
 Test Start: 2017.01.03 @ 05:02:06

GENERAL INFORMATION:

Formation: **LKC K**
 Deviated: No Whipstock: ft (KB)
 Time Tool Opened: 07:38:36
 Time Test Ended: 10:51:06
 Interval: **4362.00 ft (KB) To 4415.00 ft (KB) (TVD)**
 Total Depth: 4415.00 ft (KB) (TVD)
 Hole Diameter: 7.88 inches Hole Condition: Good
 Test Type: Conventional Bottom Hole (Initial)
 Tester: Brandon Turley
 Unit No: 79
 Reference Elevations: 2889.00 ft (KB)
 2879.00 ft (CF)
 KB to GR/CF: 10.00 ft

Serial #: 8166 Outside
 Press@RunDepth: 32.53 psig @ 4363.00 ft (KB) Capacity: 8000.00 psig
 Start Date: 2017.01.03 End Date: 2017.01.03 Last Calib.: 2017.01.03
 Start Time: 05:02:11 End Time: 10:51:05 Time On Btm: 2017.01.03 @ 07:37:36
 Time Off Btm: 2017.01.03 @ 08:52:06

TEST COMMENT: IF: 1/4" blow built to 3/4" in 30 min.
 IS: No return.
 FF: No blow.
 FS: Pulled tool.



PRESSURE SUMMARY

Time (Min.)	Pressure (psig)	Temp (deg F)	Annotation
0	2170.73	107.54	Initial Hydro-static
1	19.01	107.04	Open To Flow (1)
32	32.53	109.68	Shut-In(1)
62	1157.49	111.20	End Shut-In(1)
63	36.84	111.00	Open To Flow (2)
74	41.65	111.72	Shut-In(2)
75	2156.72	112.85	Final Hydro-static

Recovery

Length (ft)	Description	Volume (bbl)
31.00	w cm oil spots 5%w 95%m	0.43

Gas Rates

	Choke (inches)	Pressure (psig)	Gas Rate (Mcf/d)



**TRILOBITE
TESTING, INC**

DRILL STEM TEST REPORT

TOOL DIAGRAM

American Warrior Inc
3118 Cummings Rd
Garden City, KS 67846
ATTN: Kevin Timson

24-25-32 Finney, KS
Hicks A 1-24
Job Ticket: 65650 **DST#: 1**
Test Start: 2017.01.03 @ 05:02:06

Tool Information

Drill Pipe:	Length: 4351.00 ft	Diameter: 3.80 inches	Volume: 61.03 bbl	Tool Weight: 2000.00 lb
Heavy Wt. Pipe:	Length: 0.00 ft	Diameter: 0.00 inches	Volume: 0.00 bbl	Weight set on Packer: 30000.00 lb
Drill Collar:	Length: 0.00 ft	Diameter: 0.00 inches	Volume: 0.00 bbl	Weight to Pull Loose: 75000.00 lb
			<u>Total Volume: 61.03 bbl</u>	Tool Chased 0.00 ft
Drill Pipe Above KB:	16.00 ft			String Weight: Initial 60000.00 lb
Depth to Top Packer:	4362.00 ft			Final 60000.00 lb
Depth to Bottom Packer:	ft			
Interval between Packers:	53.00 ft			
Tool Length:	80.00 ft			
Number of Packers:	2	Diameter: 6.75 inches		

Tool Comments:

Tool Description	Length (ft)	Serial No.	Position	Depth (ft)	Accum. Lengths
------------------	-------------	------------	----------	------------	----------------

Stubb	1.00			4336.00	
Shut In Tool	5.00			4341.00	
Hydraulic tool	5.00			4346.00	
Jars	5.00			4351.00	
Safety Joint	2.00			4353.00	
Packer	5.00			4358.00	27.00 Bottom Of Top Packer
Packer	4.00			4362.00	
Stubb	1.00			4363.00	
Recorder	0.00	8875	Inside	4363.00	
Recorder	0.00	8166	Outside	4363.00	
Perforations	13.00			4376.00	
Change Over Sub	1.00			4377.00	
Drill Pipe	32.00			4409.00	
Change Over Sub	1.00			4410.00	
Bullnose	5.00			4415.00	53.00 Bottom Packers & Anchor

Total Tool Length: 80.00



**TRILOBITE
TESTING, INC**

DRILL STEM TEST REPORT

FLUID SUMMARY

American Warrior Inc
3118 Cummings Rd
Garden City, KS 67846
ATTN: Kevin Timson

24-25-32 Finney, KS
Hicks A 1-24
Job Ticket: 65650 **DST#: 1**
Test Start: 2017.01.03 @ 05:02:06

Mud and Cushion Information

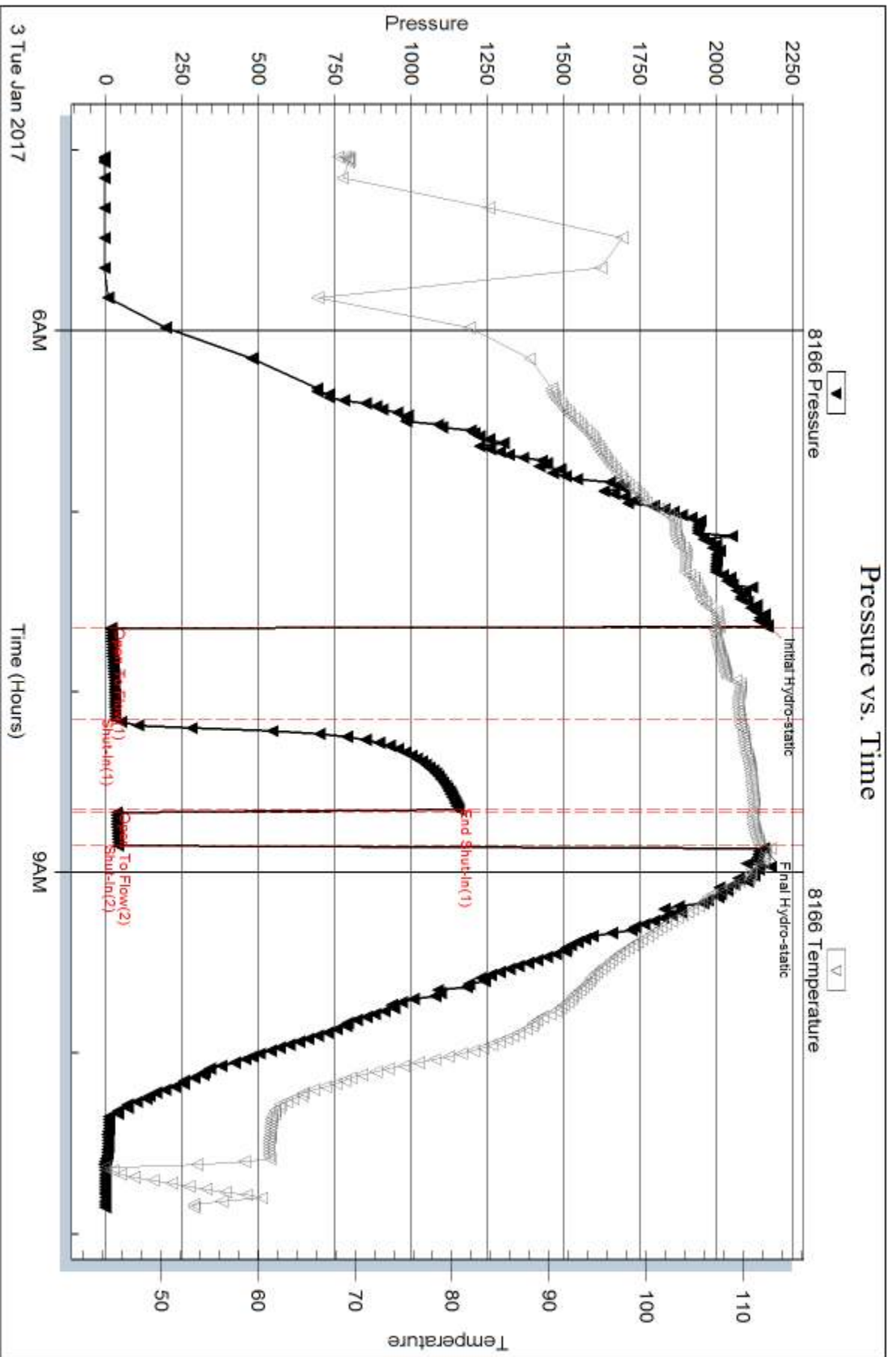
Mud Type: Gel Chem	Cushion Type:	Oil API:	0 deg API
Mud Weight: 9.00 lb/gal	Cushion Length: ft	Water Salinity:	0 ppm
Viscosity: 50.00 sec/qt	Cushion Volume: bbl		
Water Loss: 8.38 in ³	Gas Cushion Type:		
Resistivity: 0.00 ohm.m	Gas Cushion Pressure: psig		
Salinity: 1500.00 ppm			
Filter Cake: 1.00 inches			

Recovery Information

Recovery Table

Length ft	Description	Volume bbl
31.00	w cm oil spots 5%w 95%m	0.435

Total Length: 31.00 ft Total Volume: 0.435 bbl
Num Fluid Samples: 0 Num Gas Bombs: 0 Serial #:
Laboratory Name: Laboratory Location:
Recovery Comments:



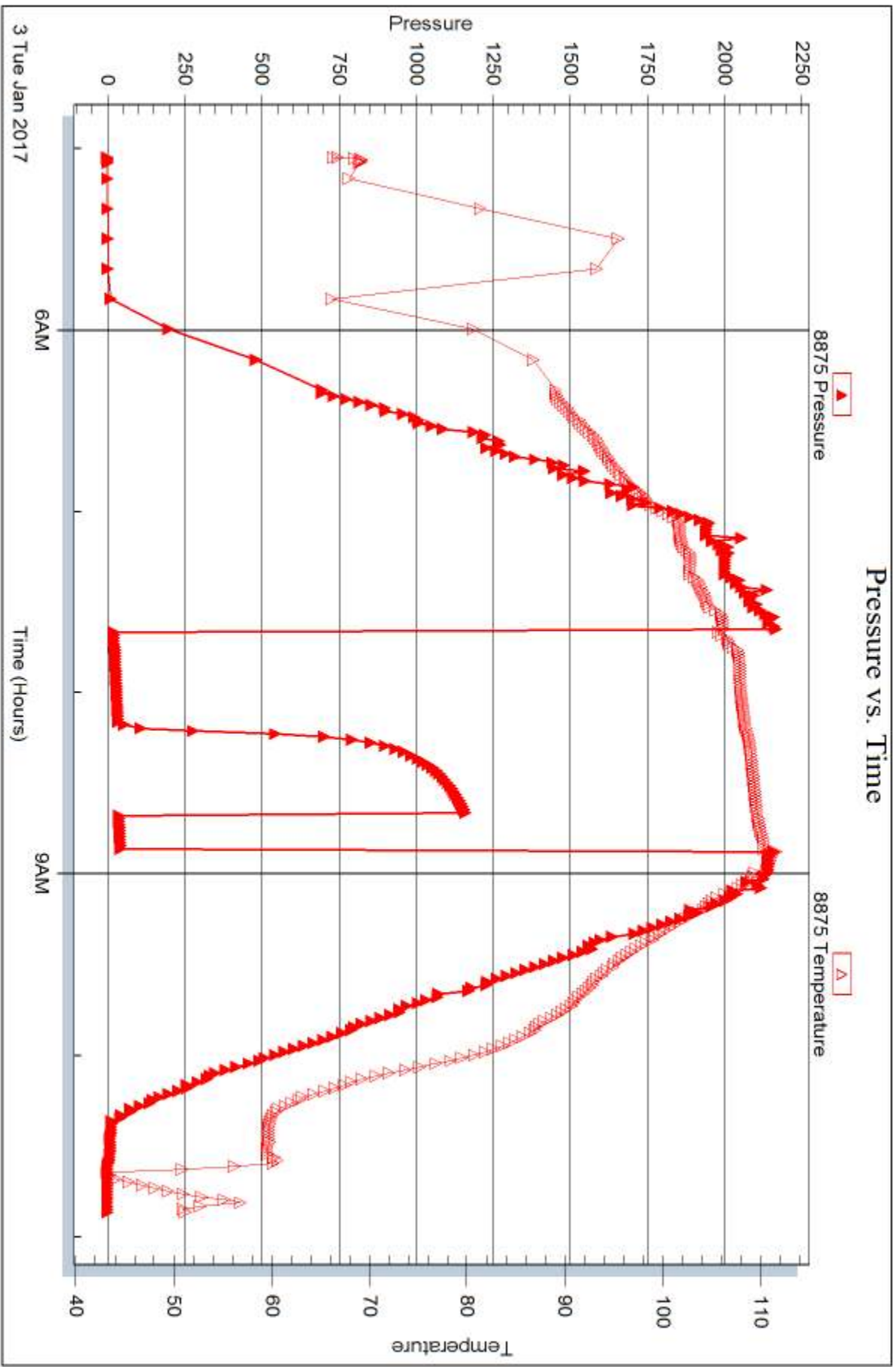
Serial #: 8875

Inside

American Warrior Inc

Hicks A 1-24

DST Test Number: 1



Trilobite Testing, Inc

Ref. No: 65650

Printed: 2017.01.10 @ 10:00:24



DRILL STEM TEST REPORT

Prepared For: **American Warrior Inc**

3118 Cummings Rd
Garden City, KS 67846

ATTN: Kevin Timson

Hicks A 1-24

24-25-32 Finney, KS

Start Date: 2017.01.04 @ 00:52:36

End Date: 2017.01.04 @ 09:00:36

Job Ticket #: 65651 DST #: 2

Trilobite Testing, Inc
PO Box 362 Hays, KS 67601
ph: 785-625-4778 fax: 785-625-5620

Printed: 2017.01.10 @ 09:59:47



TRILOBITE TESTING, INC.

DRILL STEM TEST REPORT

American Warrior Inc
 3118 Cummings Rd
 Garden City, KS 67846
 ATTN: Kevin Timson

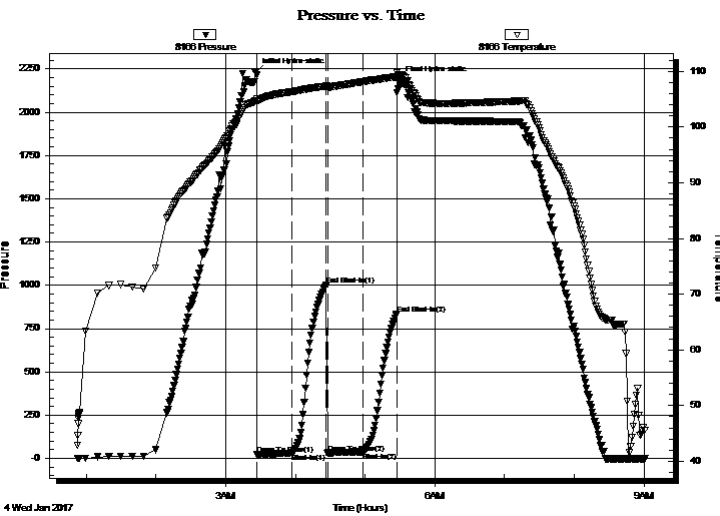
24-25-32 Finney, KS
Hicks A 1-24
 Job Ticket: 65651 **DST#: 2**
 Test Start: 2017.01.04 @ 00:52:36

GENERAL INFORMATION:

Formation: **LKC L**
 Deviated: No Whipstock: ft (KB)
 Time Tool Opened: 03:27:06
 Time Test Ended: 09:00:36
 Interval: **4404.00 ft (KB) To 4510.00 ft (KB) (TVD)**
 Total Depth: 4510.00 ft (KB) (TVD)
 Hole Diameter: 7.88 inches Hole Condition: Good
 Test Type: Conventional Bottom Hole (Reset)
 Tester: Brandon Turley
 Unit No: 79
 Reference Elevations: 2889.00 ft (KB)
 2879.00 ft (CF)
 KB to GR/CF: 10.00 ft

Serial #: 8166 Outside
 Press@RunDepth: 37.98 psig @ 4405.00 ft (KB) Capacity: 8000.00 psig
 Start Date: 2017.01.04 End Date: 2017.01.04 Last Calib.: 2017.01.04
 Start Time: 00:52:41 End Time: 09:00:35 Time On Btm: 2017.01.04 @ 03:25:36
 Time Off Btm: 2017.01.04 @ 05:29:06

TEST COMMENT: IF: 1/4" blow built to 2"
 IS: No return.
 FF: Surface blow built to 1 1/2"
 FS: No return.



PRESSURE SUMMARY

Time (Min.)	Pressure (psig)	Temp (deg F)	Annotation
0	2229.69	104.69	Initial Hydro-static
2	21.83	104.61	Open To Flow (1)
31	30.20	106.33	Shut-In(1)
61	1000.17	107.33	End Shut-In(1)
62	30.15	107.11	Open To Flow (2)
93	37.98	108.15	Shut-In(2)
122	834.96	109.00	End Shut-In(2)
124	2182.74	109.46	Final Hydro-static

Recovery

Length (ft)	Description	Volume (bbl)
60.00	ocm 10%o 90%m	0.84

* Recovery from multiple tests

Gas Rates

	Choke (inches)	Pressure (psig)	Gas Rate (Mcf/d)



**TRILOBITE
TESTING, INC**

DRILL STEM TEST REPORT

TOOL DIAGRAM

American Warrior Inc
3118 Cummings Rd
Garden City, KS 67846
ATTN: Kevin Timson

24-25-32 Finney, KS
Hicks A 1-24
Job Ticket: 65651 **DST#: 2**
Test Start: 2017.01.04 @ 00:52:36

Tool Information

Drill Pipe:	Length: 4383.00 ft	Diameter: 3.80 inches	Volume: 61.48 bbl	Tool Weight: 2000.00 lb
Heavy Wt. Pipe:	Length: 0.00 ft	Diameter: 0.00 inches	Volume: 0.00 bbl	Weight set on Packer: 30000.00 lb
Drill Collar:	Length: 0.00 ft	Diameter: 0.00 inches	Volume: 0.00 bbl	Weight to Pull Loose: 70000.00 lb
			<u>Total Volume: 61.48 bbl</u>	Tool Chased 0.00 ft
Drill Pipe Above KB:	6.00 ft			String Weight: Initial 60000.00 lb
Depth to Top Packer:	4404.00 ft			Final 60000.00 lb
Depth to Bottom Packer:	ft			
Interval between Packers:	106.00 ft			
Tool Length:	133.00 ft			
Number of Packers:	2	Diameter: 6.75 inches		

Tool Comments:

Tool Description	Length (ft)	Serial No.	Position	Depth (ft)	Accum. Lengths
-------------------------	--------------------	-------------------	-----------------	-------------------	-----------------------

Stubb	1.00			4378.00	
Shut In Tool	5.00			4383.00	
Hydraulic tool	5.00			4388.00	
Jars	5.00			4393.00	
Safety Joint	2.00			4395.00	
Packer	5.00			4400.00	27.00 Bottom Of Top Packer
Packer	4.00			4404.00	
Stubb	1.00			4405.00	
Recorder	0.00	8875	Inside	4405.00	
Recorder	0.00	8166	Outside	4405.00	
Perforations	3.00			4408.00	
Change Over Sub	1.00			4409.00	
Drill Pipe	95.00			4504.00	
Change Over Sub	1.00			4505.00	
Bullnose	5.00			4510.00	106.00 Bottom Packers & Anchor

Total Tool Length: 133.00



**TRILOBITE
TESTING, INC**

DRILL STEM TEST REPORT

FLUID SUMMARY

American Warrior Inc
3118 Cummings Rd
Garden City, KS 67846
ATTN: Kevin Timson

24-25-32 Finney, KS
Hicks A 1-24
Job Ticket: 65651 **DST#: 2**
Test Start: 2017.01.04 @ 00:52:36

Mud and Cushion Information

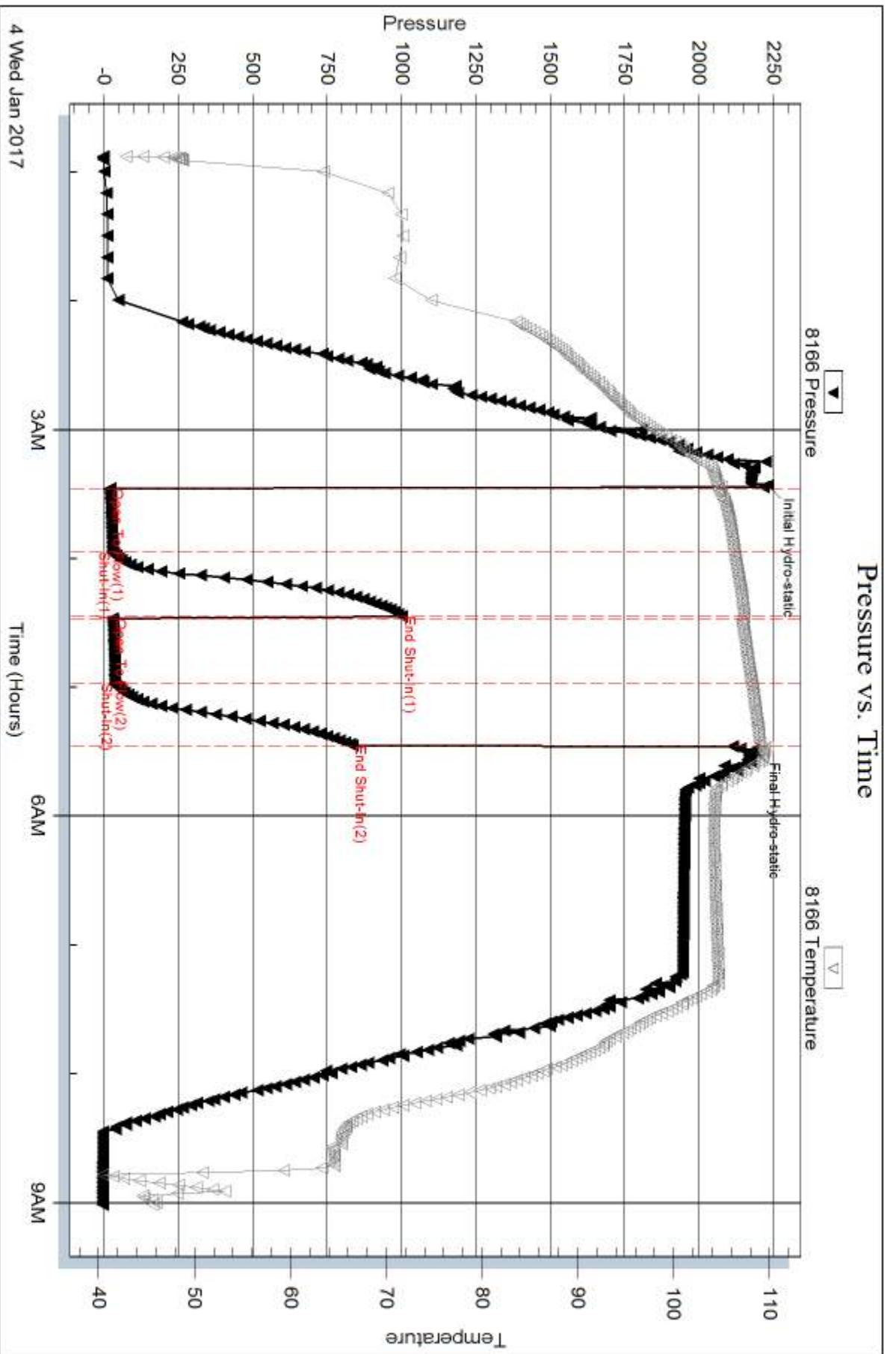
Mud Type: Gel Chem	Cushion Type:	Oil API:	0 deg API
Mud Weight: 9.00 lb/gal	Cushion Length: ft	Water Salinity:	0 ppm
Viscosity: 59.00 sec/qt	Cushion Volume: bbl		
Water Loss: 7.58 in ³	Gas Cushion Type:		
Resistivity: 0.00 ohm.m	Gas Cushion Pressure: psig		
Salinity: 2500.00 ppm			
Filter Cake: 1.00 inches			

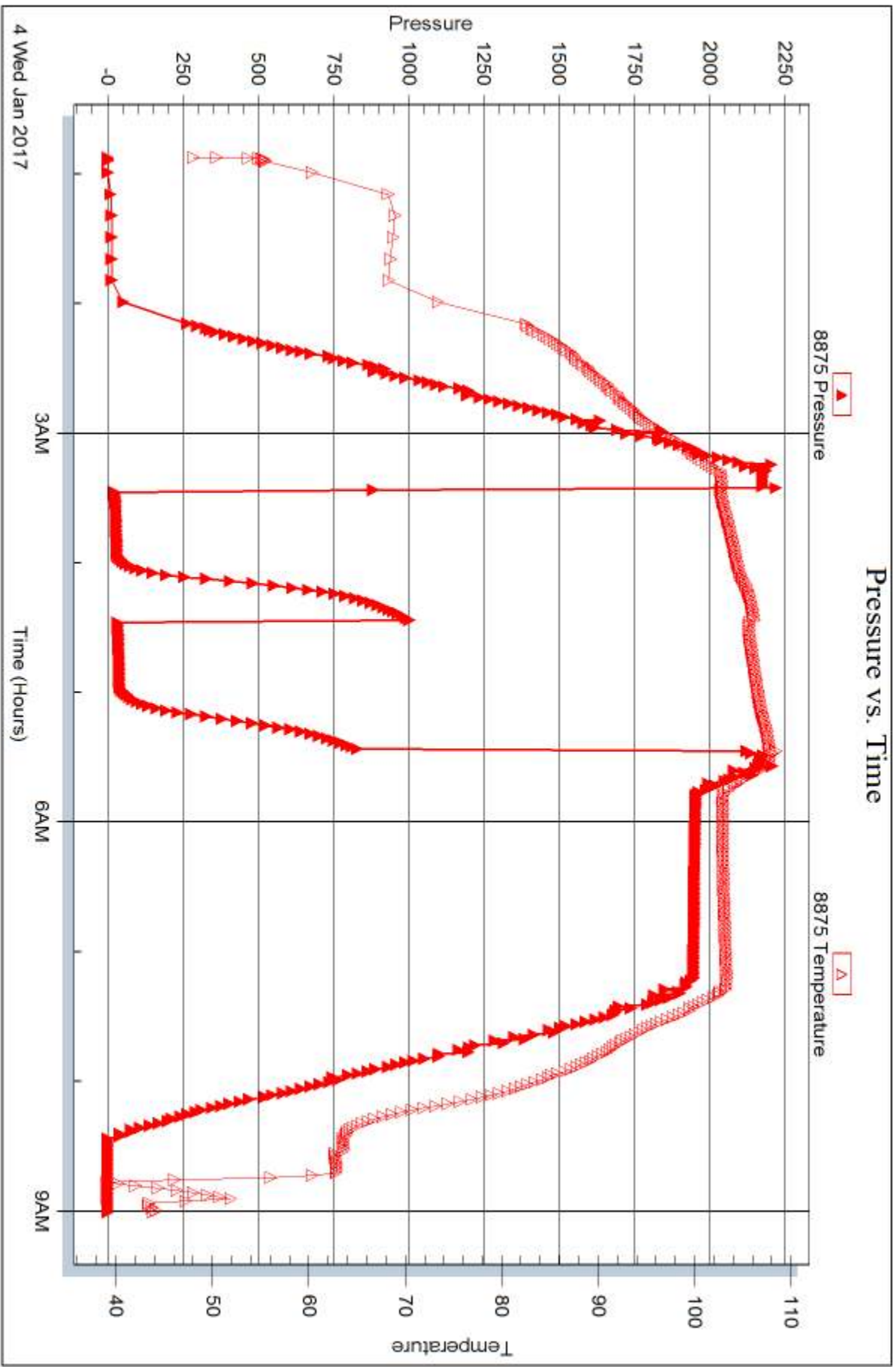
Recovery Information

Recovery Table

Length ft	Description	Volume bbl
60.00	ocm 10%o 90%m	0.842

Total Length: 60.00 ft Total Volume: 0.842 bbl
Num Fluid Samples: 0 Num Gas Bombs: 0 Serial #:
Laboratory Name: Laboratory Location:
Recovery Comments:







DRILL STEM TEST REPORT

Prepared For: **American Warrior Inc**

3118 Cummings Rd
Garden City, KS 67846

ATTN: Kevin Timson

Hicks A 1-24

24-25-32 Finney, KS

Start Date: 2017.01.05 @ 03:49:23

End Date: 2017.01.05 @ 09:20:23

Job Ticket #: 65652 DST #: 3

Trilobite Testing, Inc

PO Box 362 Hays, KS 67601

ph: 785-625-4778 fax: 785-625-5620

Printed: 2017.01.10 @ 09:59:16



**TRILOBITE
TESTING, INC.**

DRILL STEM TEST REPORT

American Warrior Inc
3118 Cummings Rd
Garden City, KS 67846
ATTN: Kevin Timson

24-25-32 Finney, KS

Hicks A 1-24

Job Ticket: 65652

DST#: 3

Test Start: 2017.01.05 @ 03:49:23

GENERAL INFORMATION:

Formation: **Ft. Scott**

Deviated: No Whipstock: ft (KB)

Time Tool Opened: 05:46:23

Time Test Ended: 09:20:23

Test Type: Conventional Bottom Hole (Reset)

Tester: Brandon Turley

Unit No: 79

Interval: 4600.00 ft (KB) To 4632.00 ft (KB) (TVD)

Reference Elevations: 2889.00 ft (KB)

Total Depth: 4632.00 ft (KB) (TVD)

2879.00 ft (CF)

Hole Diameter: 7.88 inches Hole Condition: Good

KB to GR/CF: 10.00 ft

Serial #: 8166 Outside

Press@RunDepth: 18.71 psig @ 4601.00 ft (KB)

Capacity: 8000.00 psig

Start Date: 2017.01.05 End Date: 2017.01.05

Last Calib.: 2017.01.05

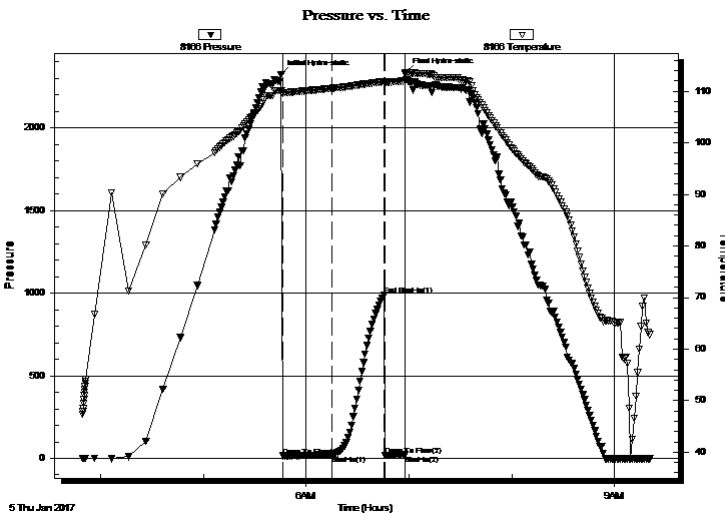
Start Time: 03:49:28 End Time: 09:20:22

Time On Btm: 2017.01.05 @ 05:45:23

Time Off Btm: 2017.01.05 @ 06:57:53

TEST COMMENT: IF: Surface blow died in 7 min.
IS: No return.
FF: No blow.
FS: Pulled tool.

PRESSURE SUMMARY



Time (Min.)	Pressure (psig)	Temp (deg F)	Annotation
0	2322.81	110.18	Initial Hydro-static
1	15.05	109.56	Open To Flow (1)
30	18.71	110.59	Shut-In(1)
60	990.77	111.90	End Shut-In(1)
61	20.08	111.71	Open To Flow (2)
72	21.25	112.04	Shut-In(2)
73	2336.78	113.42	Final Hydro-static

Recovery

Length (ft)	Description	Volume (bbl)
5.00	mud 100%m	0.07

* Recovery from multiple tests

Gas Rates

Choke (inches)	Pressure (psig)	Gas Rate (Mcf/d)



**TRILOBITE
TESTING, INC**

DRILL STEM TEST REPORT

TOOL DIAGRAM

American Warrior Inc
3118 Cummings Rd
Garden City, KS 67846
ATTN: Kevin Timson

24-25-32 Finney, KS
Hicks A 1-24
Job Ticket: 65652 **DST#: 3**
Test Start: 2017.01.05 @ 03:49:23

Tool Information

Drill Pipe:	Length: 4603.00 ft	Diameter: 3.80 inches	Volume: 64.57 bbl	Tool Weight: 2000.00 lb
Heavy Wt. Pipe:	Length: 0.00 ft	Diameter: 0.00 inches	Volume: 0.00 bbl	Weight set on Packer: 30000.00 lb
Drill Collar:	Length: 0.00 ft	Diameter: 0.00 inches	Volume: 0.00 bbl	Weight to Pull Loose: 65000.00 lb
			<u>Total Volume: 64.57 bbl</u>	Tool Chased 0.00 ft
Drill Pipe Above KB:	30.00 ft			String Weight: Initial 62000.00 lb
Depth to Top Packer:	4600.00 ft			Final 62000.00 lb
Depth to Bottom Packer:	ft			
Interval between Packers:	32.00 ft			
Tool Length:	59.00 ft			
Number of Packers:	2	Diameter: 6.75 inches		

Tool Comments:

Tool Description	Length (ft)	Serial No.	Position	Depth (ft)	Accum. Lengths
-------------------------	--------------------	-------------------	-----------------	-------------------	-----------------------

Stubb	1.00			4574.00	
Shut In Tool	5.00			4579.00	
Hydraulic tool	5.00			4584.00	
Jars	5.00			4589.00	
Safety Joint	2.00			4591.00	
Packer	5.00			4596.00	27.00 Bottom Of Top Packer
Packer	4.00			4600.00	
Stubb	1.00			4601.00	
Recorder	0.00	8875	Inside	4601.00	
Recorder	0.00	8166	Outside	4601.00	
Perforations	26.00			4627.00	
Bullnose	5.00			4632.00	32.00 Bottom Packers & Anchor

Total Tool Length: 59.00



**TRILOBITE
TESTING, INC**

DRILL STEM TEST REPORT

FLUID SUMMARY

American Warrior Inc
3118 Cummings Rd
Garden City, KS 67846
ATTN: Kevin Timson

24-25-32 Finney, KS
Hicks A 1-24
Job Ticket: 65652 **DST#: 3**
Test Start: 2017.01.05 @ 03:49:23

Mud and Cushion Information

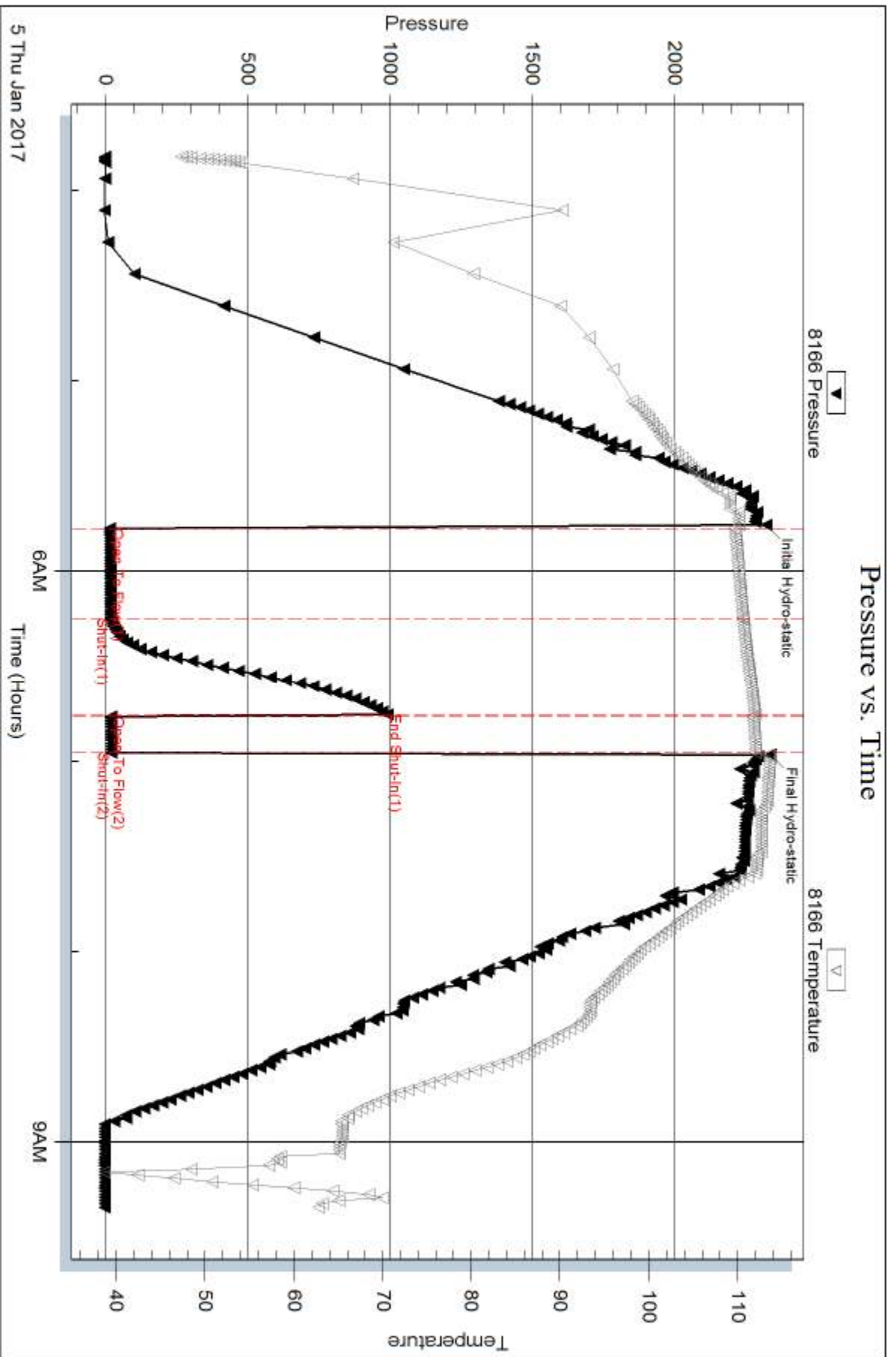
Mud Type: Gel Chem	Cushion Type:	Oil API:	0 deg API
Mud Weight: 10.00 lb/gal	Cushion Length: ft	Water Salinity:	0 ppm
Viscosity: 47.00 sec/qt	Cushion Volume: bbl		
Water Loss: 7.98 in ³	Gas Cushion Type:		
Resistivity: 0.00 ohm.m	Gas Cushion Pressure: psig		
Salinity: 2900.00 ppm			
Filter Cake: 1.00 inches			

Recovery Information

Recovery Table

Length ft	Description	Volume bbl
5.00	mud 100%m	0.070

Total Length: 5.00 ft Total Volume: 0.070 bbl
 Num Fluid Samples: 0 Num Gas Bombs: 0 Serial #:
 Laboratory Name: Laboratory Location:
 Recovery Comments:



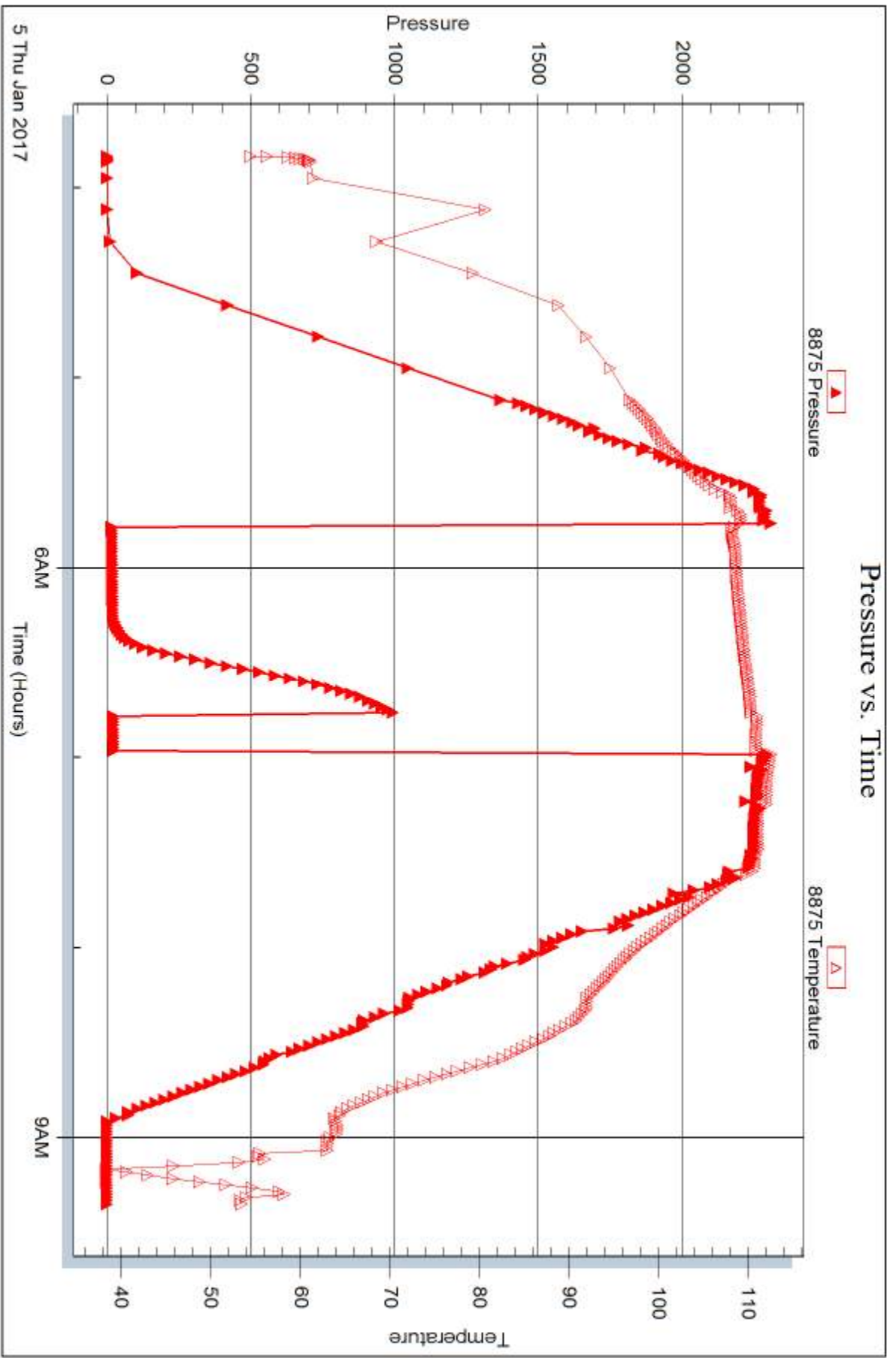
Serial #: 8875

Inside

American Warrior Inc

Hicks A 1-24

DST Test Number: 3



Trilobite Testing, Inc

Ref. No: 65652

Printed: 2017.01.10 @ 09:59:17



DRILL STEM TEST REPORT

Prepared For: **American Warrior Inc**

3118 Cummings Rd
Garden City, KS 67846

ATTN: Kevin Timson

Hicks A 1-24

24-25-32 Finney, KS

Start Date: 2017.01.07 @ 00:09:44

End Date: 2017.01.07 @ 07:38:44

Job Ticket #: 65653 DST #: 4

Trilobite Testing, Inc
PO Box 362 Hays, KS 67601
ph: 785-625-4778 fax: 785-625-5620

Printed: 2017.01.10 @ 09:55:08



TRILOBITE TESTING, INC

DRILL STEM TEST REPORT

American Warrior Inc
 3118 Cummings Rd
 Garden City, KS 67846
 ATTN: Kevin Timson

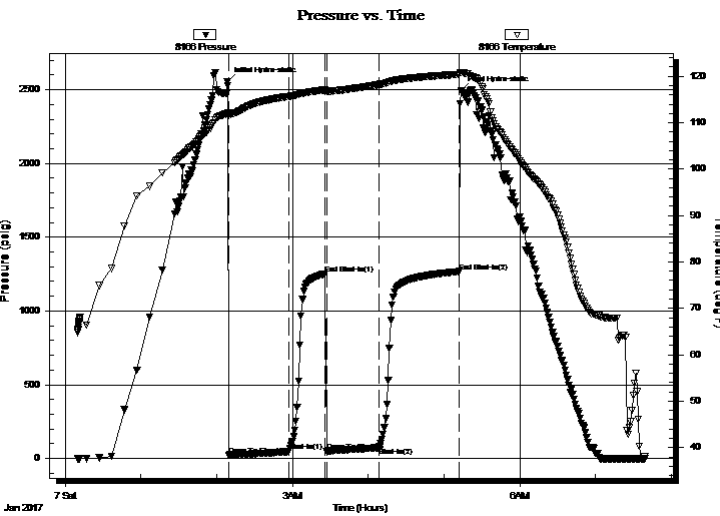
24-25-32 Finney, KS
Hicks A 1-24
 Job Ticket: 65653 **DST#: 4**
 Test Start: 2017.01.07 @ 00:09:44

GENERAL INFORMATION:

Formation: **St. Louis**
 Deviated: No Whipstock: ft (KB) Test Type: Conventional Bottom Hole (Reset)
 Time Tool Opened: 02:09:44 Tester: Brandon Turley
 Time Test Ended: 07:38:44 Unit No: 79
Interval: 4870.00 ft (KB) To 4912.00 ft (KB) (TVD) Reference Elevations: 2889.00 ft (KB)
 Total Depth: 4912.00 ft (KB) (TVD) 2879.00 ft (CF)
 Hole Diameter: 7.88 inches Hole Condition: Good KB to GR/CF: 10.00 ft

Serial #: 8166 Outside
 Press@RunDepth: 73.13 psig @ 4871.00 ft (KB) Capacity: 8000.00 psig
 Start Date: 2017.01.07 End Date: 2017.01.07 Last Calib.: 2017.01.07
 Start Time: 00:09:49 End Time: 07:38:43 Time On Btm: 2017.01.07 @ 02:08:14
 Time Off Btm: 2017.01.07 @ 05:13:44

TEST COMMENT: IF: BOB in 16 min.
 IS: Surface blow died in 10 min.
 FF: BOB in 10 min.
 FS: Surface blow built to 2 1/2" died in 30 min.



PRESSURE SUMMARY

Time (Min.)	Pressure (psig)	Temp (deg F)	Annotation
0	2556.12	111.94	Initial Hydro-static
2	23.12	111.65	Open To Flow (1)
49	46.80	115.65	Shut-In(1)
78	1252.28	117.08	End Shut-In(1)
79	49.60	116.75	Open To Flow (2)
120	73.13	118.21	Shut-In(2)
184	1267.75	120.40	End Shut-In(2)
186	2492.42	120.83	Final Hydro-static

Recovery

Length (ft)	Description	Volume (bbl)
62.00	mcgo 15%g 55%o 30%m	0.87
77.00	mcgo 10%g 80%o 10%m	1.08
0.00	729 GIP	0.00

* Recovery from multiple tests

Gas Rates

	Choke (inches)	Pressure (psig)	Gas Rate (Mcf/d)



**TRILOBITE
TESTING, INC**

DRILL STEM TEST REPORT

TOOL DIAGRAM

American Warrior Inc
3118 Cummings Rd
Garden City, KS 67846
ATTN: Kevin Timson

24-25-32 Finney, KS
Hicks A 1-24
Job Ticket: 65653 **DST#: 4**
Test Start: 2017.01.07 @ 00:09:44

Tool Information

Drill Pipe:	Length: 4856.00 ft	Diameter: 3.80 inches	Volume: 68.12 bbl	Tool Weight: 2000.00 lb
Heavy Wt. Pipe:	Length: 0.00 ft	Diameter: 0.00 inches	Volume: 0.00 bbl	Weight set on Packer: 30000.00 lb
Drill Collar:	Length: 0.00 ft	Diameter: 0.00 inches	Volume: 0.00 bbl	Weight to Pull Loose: 70000.00 lb
			<u>Total Volume: 68.12 bbl</u>	Tool Chased 0.00 ft
Drill Pipe Above KB:	13.00 ft			String Weight: Initial 62000.00 lb
Depth to Top Packer:	4870.00 ft			Final 62000.00 lb
Depth to Bottom Packer:	ft			
Interval between Packers:	42.00 ft			
Tool Length:	69.00 ft			
Number of Packers:	2	Diameter: 6.75 inches		

Tool Comments:

Tool Description	Length (ft)	Serial No.	Position	Depth (ft)	Accum. Lengths
-------------------------	--------------------	-------------------	-----------------	-------------------	-----------------------

Stubb	1.00			4844.00	
Shut In Tool	5.00			4849.00	
Hydraulic tool	5.00			4854.00	
Jars	5.00			4859.00	
Safety Joint	2.00			4861.00	
Packer	5.00			4866.00	27.00 Bottom Of Top Packer
Packer	4.00			4870.00	
Stubb	1.00			4871.00	
Recorder	0.00	8875	Inside	4871.00	
Recorder	0.00	8166	Outside	4871.00	
Perforations	2.00			4873.00	
Change Over Sub	1.00			4874.00	
Drill Pipe	32.00			4906.00	
Change Over Sub	1.00			4907.00	
Bullnose	5.00			4912.00	42.00 Bottom Packers & Anchor

Total Tool Length: 69.00



**TRILOBITE
TESTING, INC**

DRILL STEM TEST REPORT

FLUID SUMMARY

American Warrior Inc
3118 Cummings Rd
Garden City, KS 67846
ATTN: Kevin Timson

24-25-32 Finney, KS
Hicks A 1-24
Job Ticket: 65653 **DST#: 4**
Test Start: 2017.01.07 @ 00:09:44

Mud and Cushion Information

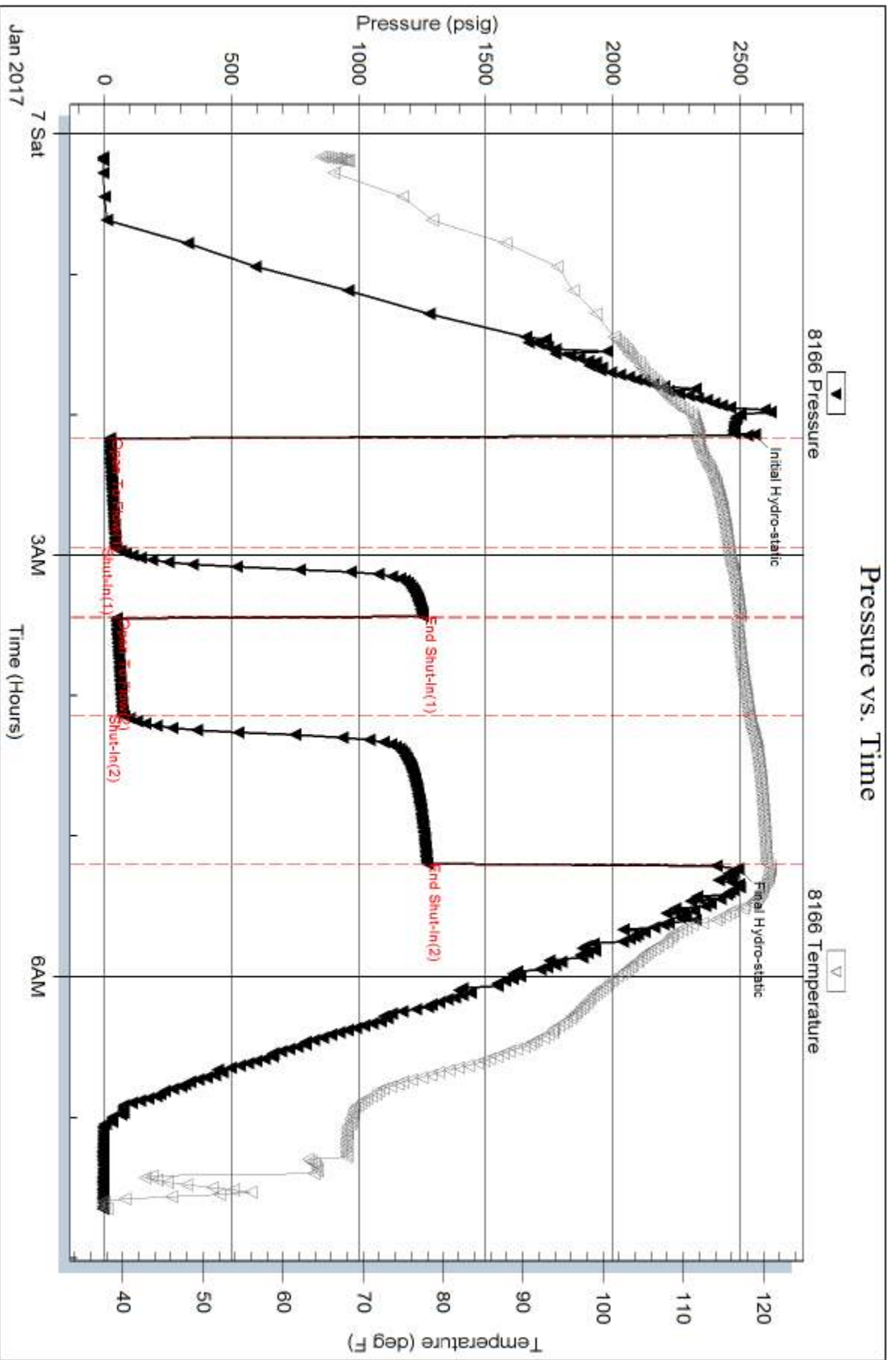
Mud Type: Gel Chem	Cushion Type:	Oil API:	0 deg API
Mud Weight: 10.00 lb/gal	Cushion Length: ft	Water Salinity:	0 ppm
Viscosity: 56.00 sec/qt	Cushion Volume: bbl		
Water Loss: 7.19 in ³	Gas Cushion Type:		
Resistivity: 0.00 ohm.m	Gas Cushion Pressure: psig		
Salinity: 1600.00 ppm			
Filter Cake: 1.00 inches			

Recovery Information

Recovery Table

Length ft	Description	Volume bbl
62.00	mcgo 15%g 55%o 30%m	0.870
77.00	mcgo 10%g 80%o 10%m	1.080
0.00	729 GIP	0.000

Total Length: 139.00 ft Total Volume: 1.950 bbl
 Num Fluid Samples: 0 Num Gas Bombs: 0 Serial #:
 Laboratory Name: Laboratory Location:
 Recovery Comments:



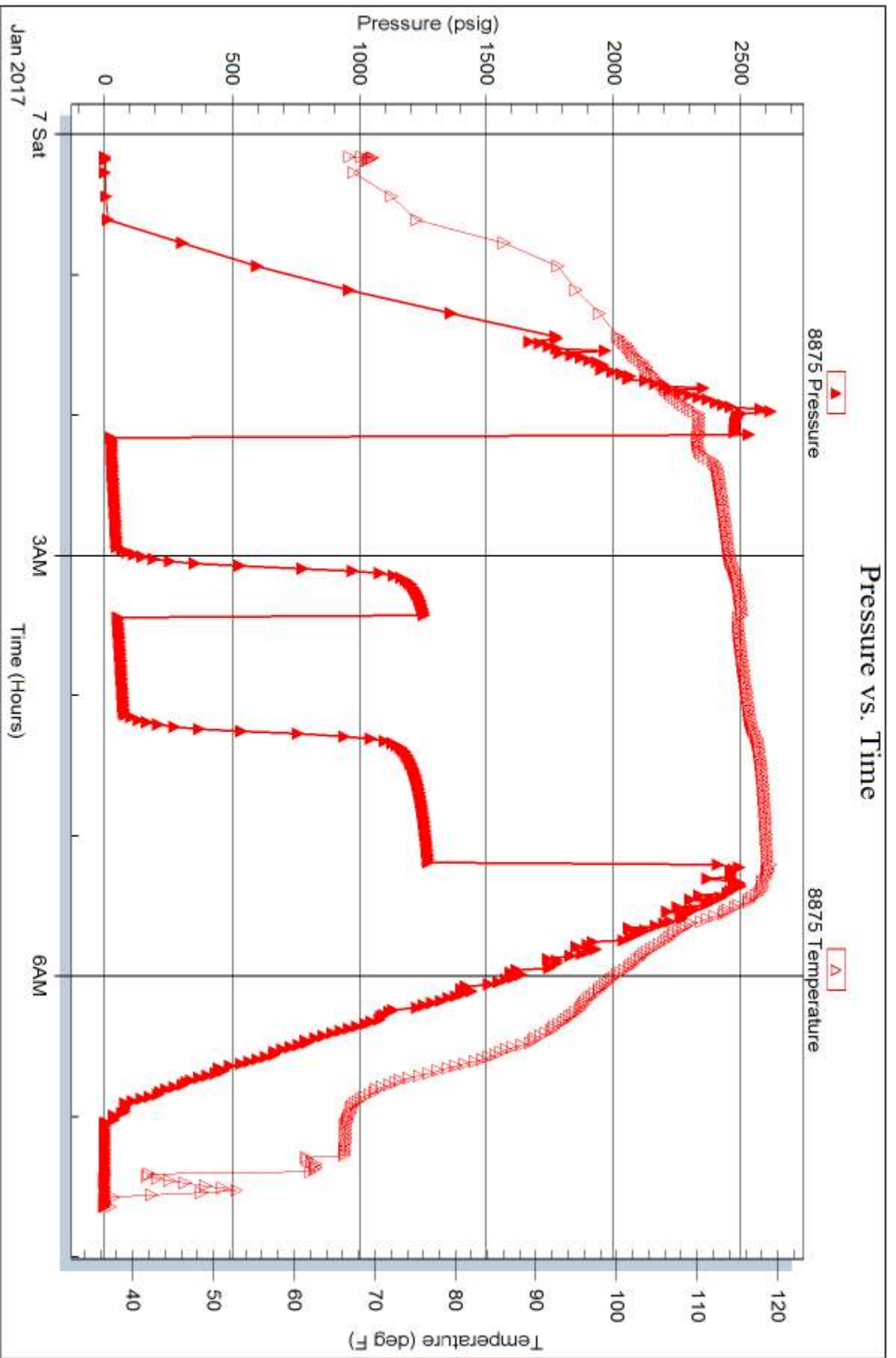
Serial #: 8875

Inside

American Warrior Inc

Hicks A 1-24

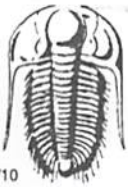
DST Test Number: 4



Trilobite Testing, Inc

Ref. No: 65653

Printed: 2017.01.10 @ 09:55:09



TRILOBITE TESTING INC.

1515 Commerce Parkway • Hays, Kansas 67601

Test Ticket

NO. **65650**

4/10

Well Name & No. Hicks A 1-24 Test No. 1 Date 1-3-17
 Company American warrior #nc Elevation 2889 KB 2879 GL
 Address 3118 Cummings Rd Garden city, KS 67846
 Co. Rep / Geo. Kevin Timson Rig Puke #1
 Location: Sec. 24 Twp. 25 Rge. 32 Co. Finney State KS

Interval Tested 4362 4415 Zone Tested Lansing - K8
 Anchor Length 53 Drill Pipe Run 4351 Mud Wt. 9.4
 Top Packer Depth 4357 Drill Collars Run — Vis 50
 Bottom Packer Depth 4362 Wt. Pipe Run — WL 8.4
 Total Depth 4415 Chlorides 1500 ppm System LCM 2

Blow Description IF: 1/4 blow built to 3/4 in 30 min.
IS: No return.
FF: No blow.
FS: Pulled tool.

Rec	Feet of	%gas	%oil	%water	%mud
<u>31</u>	<u>wcm oil spots</u>		<u>5</u>	<u>95</u>	
Rec	Feet of	%gas	%oil	%water	%mud
Rec	Feet of	%gas	%oil	%water	%mud
Rec	Feet of	%gas	%oil	%water	%mud
Rec	Feet of	%gas	%oil	%water	%mud

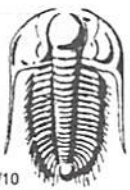
Rec Total 31 BHT 111 Gravity — API RW — @ — °F Chlorides — ppm

(A) Initial Hydrostatic 2170 Test 1150 T-On Location 3:00
 (B) First Initial Flow 19 Jars 250 T-Started 5:02
 (C) First Final Flow 32 Safety Joint 75 T-Open 7:38
 (D) Initial Shut-In 1157 Circ Sub NIC T-Pulled 8:48
 (E) Second Initial Flow 36 Hourly Standby T-Out 10:51
 (F) Second Final Flow 41 Mileage 110 - 82.50 Comments
 (G) Final Shut-In — Sampler Ruined Shale Packer
 (H) Final Hydrostatic 2156 Straddle Ruined Packer
 Shale Packer Extra Copies
 Extra Packer Extra Recorder
 Extra Recorder
 Day Standby
 Accessibility
 Sub Total 1557.50 MP/DST Disc't

Initial Open 30
 Initial Shut-In 30
 Final Flow 10
 Final Shut-In Pull

Approved By _____ Our Representative [Signature]

Trilobite Testing Inc. shall not be liable for damaged of any kind of the property or personnel of the one for whom a test is made, or for any loss suffered or sustained, directly or indirectly, through the use of its equipment, or its statements or opinion concerning the results of any test, tools lost or damaged in the hole shall be paid for at cost by the party for whom the test is made.



TRILOBITE TESTING INC.

1515 Commerce Parkway • Hays, Kansas 67601

Test Ticket

NO. **65651**

Well Name & No. Hicks A 1-24 Test No. 2 Date 1-4-17
 Company American Warrior Inc Elevation 2889 KB 2879 GL
 Address _____
 Co. Rep / Geo. Kevin Timson Rig Duke #1
 Location: Sec. 24 Twp. 25 Rge. 32 Co. Finney State KS

Interval Tested 4404 4510 Zone Tested Lensing L
 Anchor Length _____ 106 Drill Pipe Run 4383 Mud Wt. 9.4
 Top Packer Depth _____ 4399 Drill Collars Run _____ Vis 59
 Bottom Packer Depth _____ 4404 Wt. Pipe Run _____ WL 7.6
 Total Depth _____ 4510 Chlorides 2500 ppm System LCM 2
 Blow Description IF: 1/4 blow built to 2,
IS: No return,
FF: Surface blow built to 1 1/2,
FS: No return.

Rec	Feet of	%gas	%oil	%water	%mud
<u>60</u>	<u>6cm</u>	<u>10</u>		<u>90</u>	
Rec	Feet of	%gas	%oil	%water	%mud
Rec	Feet of	%gas	%oil	%water	%mud
Rec	Feet of	%gas	%oil	%water	%mud
Rec	Feet of	%gas	%oil	%water	%mud

Rec Total 60 BHT 109 Gravity _____ API RW _____ @ _____ °F Chlorides _____ ppm

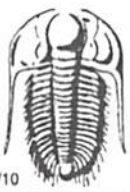
(A) Initial Hydrostatic 2229 Test 1150 T-On Location 00:00
 (B) First Initial Flow 21 Jars 250 T-Started 00:52
 (C) First Final Flow 30 Safety Joint 75 T-Open 3:25
 (D) Initial Shut-In 1000 Circ Sub NK T-Pulled 5:25
 (E) Second Initial Flow 30 Hourly Standby _____ T-Out 9:00
 (F) Second Final Flow 37 Mileage 110- 82.50 Comments _____
 (G) Final Shut-In 834 Sampler _____
 (H) Final Hydrostatic 2182 Straddle _____
 Shale Packer _____
 Extra Packer _____
 Extra Recorder _____
 Day Standby _____
 Accessibility _____

Initial Open 30
 Initial Shut-In 30
 Final Flow 30
 Final Shut-In 30

Sub Total 1557.5 Total 1557.50 MP/DST Disc't _____

Approved By _____ Our Representative

Trilobite Testing Inc. shall not be liable for damaged of any kind of the property or personnel of the one for whom a test is made, or for any loss suffered or sustained, directly or indirectly, through the use of its equipment, or its statements or opinion concerning the results of any test, tools lost or damaged in the hole shall be paid for at cost by the party for whom the test is made.



TRILOBITE TESTING INC.

1515 Commerce Parkway • Hays, Kansas 67601

Test Ticket

NO. **65652**

Well Name & No. Hicks A 1-24 Test No. 3 Date 1-5-17
 Company American Warrior Inc Elevation 2889 KB 2879 GL
 Address _____
 Co. Rep / Geo. Kevin Timson Rig Duke #1
 Location: Sec. 24 Twp. 25 Rge. 32 Co. Finney State KS

Interval Tested 4600 4632 Zone Tested Ft Scott
 Anchor Length _____ 32 Drill Pipe Run 4603 Mud Wt. 9.5
 Top Packer Depth _____ 4595 Drill Collars Run _____ Vis 47
 Bottom Packer Depth _____ 4600 Wt. Pipe Run _____ WL 8.0
 Total Depth _____ 4632 Chlorides 2900 ppm System LCM 2

Blow Description IF: surface blow died in 7 min.
IS: No return.
FF: No blow.
FS: Aulted tool

Rec	Feet of	%gas	%oil	%water	%mud
<u>5</u>	<u>mud</u>			<u>100</u>	
Rec	Feet of	%gas	%oil	%water	%mud
Rec	Feet of	%gas	%oil	%water	%mud
Rec	Feet of	%gas	%oil	%water	%mud
Rec	Feet of	%gas	%oil	%water	%mud

Rec Total 5 BHT 112 Gravity _____ API RW _____ @ _____ ° F Chlorides _____ ppm

(A) Initial Hydrostatic 2327 Test 1150 T-On Location 2:10
 (B) First Initial Flow 15 Jars 250 T-Started 3:49
 (C) First Final Flow 18 Safety Joint 75 T-Open 5:46
 (D) Initial Shut-In 990 Circ Sub NIL T-Pulled 6:56
 (E) Second Initial Flow 20 Hourly Standby _____ T-Out 9:20
 (F) Second Final Flow 21 Mileage 110 - 82.50 Comments _____
 (G) Final Shut-In _____ Sampler _____
 (H) Final Hydrostatic 2336 Straddle _____
 Shale Packer _____
 Extra Packer _____
 Extra Recorder _____
 Day Standby _____
 Accessibility _____

Initial Open 30
 Initial Shut-In 30
 Final Flow 10
 Final Shut-In _____
 Sub Total 0
 Total 1557.50
 MP/DST Disc't _____
 Sub Total 1557.50

Approved By _____ Our Representative

Trilobite Testing Inc. shall not be liable for damaged of any kind of the property or personnel of the one for whom a test is made, or for any loss suffered or sustained, directly or indirectly, through the use of its equipment, or its statements or opinion concerning the results of any test, tools lost or damaged in the hole shall be paid for at cost by the party for whom the test is made.



TRILOBITE TESTING INC.

1515 Commerce Parkway • Hays, Kansas 67601

Test Ticket

NO. **65653**

Well Name & No. Hicks A 1-24 Test No. 4 Date 1-6-17
 Company American Warrior Inc Elevation 2889 KB 2879 GL
 Address _____
 Co. Rep / Geo. Kevin Timson Rig Duke #1
 Location: Sec. 24 Twp. 25 Rge. 32 Co. Finney State KS

Interval Tested 4870 4912 Zone Tested St. Louis
 Anchor Length 42 Drill Pipe Run 4856 Mud Wt. 9.6
 Top Packer Depth 4865 Drill Collars Run — Vis 56
 Bottom Packer Depth 4870 Wt. Pipe Run — WL 7.2
 Total Depth 4912 Chlorides 1600 ppm System LCM 1 1/2

Blow Description IF: BoB in 16 min.
IS: surface blow died in 10 min.
FF: BoB in 10 min.
FS: surface blow built to 2 1/2 died in 30 min.

Rec	Feet of	%gas	%oil	%water	%mud
<u>57</u>	<u>MC90</u>	<u>10</u>	<u>80</u>	<u>10</u>	<u>—</u>
<u>62</u>	<u>MC90</u>	<u>15</u>	<u>55</u>	<u>30</u>	<u>—</u>
Rec	Feet of	%gas	%oil	%water	%mud
Rec	Feet of <u>729 GIP</u>	%gas	%oil	%water	%mud
Rec	Feet of	%gas	%oil	%water	%mud

Rec Total 139 BHT 120 Gravity — API RW — @ — °F Chlorides — ppm

(A) Initial Hydrostatic <u>2556</u>	<input checked="" type="checkbox"/> Test <u>1150</u>	T-On Location <u>22:10</u>
(B) First Initial Flow <u>23</u>	<input checked="" type="checkbox"/> Jars <u>250</u>	T-Started <u>00:09</u>
(C) First Final Flow <u>46</u>	<input checked="" type="checkbox"/> Safety Joint <u>75</u>	T-Open <u>2:08</u>
(D) Initial Shut-In <u>1252</u>	<input checked="" type="checkbox"/> Circ Sub <u>NIC</u>	T-Pulled <u>5:08</u>
(E) Second Initial Flow <u>49</u>	<input checked="" type="checkbox"/> Hourly Standby <u>1 1/4</u>	T-Out <u>7:39</u>
(F) Second Final Flow <u>73</u>	<input checked="" type="checkbox"/> Mileage <u>110-</u> 82.50	Comments <u>on the bank at 22:45</u>
(G) Final Shut-In <u>1267</u>	<input type="checkbox"/> Sampler	
(H) Final Hydrostatic <u>2492</u>	<input type="checkbox"/> Straddle	<input type="checkbox"/> Ruined Shale Packer
Initial Open <u>45</u>	<input type="checkbox"/> Shale Packer	<input checked="" type="checkbox"/> Ruined Packer <u>320</u>
Initial Shut-In <u>30 45</u>	<input type="checkbox"/> Extra Packer	<input type="checkbox"/> Extra Copies
Final Flow <u>45</u>	<input type="checkbox"/> Extra Recorder	Sub Total <u>370</u>
Final Shut-In <u>60 45</u>	<input checked="" type="checkbox"/> Day Standby <u>1.5d 1.5h</u>	Total <u>1927.50</u>
	<input type="checkbox"/> Accessibility	MP/DST Disc't
	Sub Total <u>1557.50</u>	

Approved By _____ Our Representative [Signature]
 TriLOBITE TESTING INC. shall not be liable for damaged of any kind of the property or personnel of the one for whom a test is made, or for any loss suffered or sustained, directly or indirectly, through the use of its equipment, or its statements or opinion concerning the results of any test, tools lost or damaged in the hole shall be paid for at cost by the party for whom the test is made.