

TRILOBITE TESTING INC.

1515 Commerce Parkway • Hays, Kansas 67601

Test Ticket

NO. 63826

Well Name & No. Roesler 6 Test No. 4 Date 09/30/18
 Company Prolitic Resources Elevation 2049 KB 2047 GL
 Address 7701 E Kellogg Dr Ste 586 Wichita, KS 67207
 Co. Rep / Geo. Jeff Burk Rig Royal 2
 Location: Sec. 2 Twp 22S Rge. 18W Co. Pawnee State KS

Interval Tested 4123 - 4170 Zone Tested Viola
 Anchor Length 47 Drill Pipe Run 4100 Mud Wt. 9.1
 Top Packer Depth 4118 Drill Collars Run 0 Vis 52
 Bottom Packer Depth 4123 Wt. Pipe Run 0 WL 10
 Total Depth 4170 Chlorides 7000 ppm System LCM 1.5

Blow Description IF: ~~STRONG~~ STRONG Blow, BOBIN 8 minutes, Built to 29 inches
 ISI: NO Blow Back

FF: Fair Blow, BOBIN 10 minutes, Built to

FSI: NO Blow Back

Rec	Feet of	%gas	%oil	%water	%mud
<u>230</u>	<u>GTP</u>				
<u>80</u>	<u>OCM</u>		<u>10</u>		<u>90</u>
Rec Total	<u>80</u>				

BHT 111 Gravity N/C API RW NR @ NR °F Chlorides N/C ppm

(A) Initial Hydrostatic 2139 Test _____ T-On Location 14:00
 (B) First Initial Flow 35 Jars _____ T-Started 14:41
 (C) First Final Flow 37 Safety Joint _____ T-Open 16:08
 (D) Initial Shut-In 537 Circ Sub _____ T-Pulled 19:54
 (E) Second Initial Flow 36 Hourly Standby _____ T-Out 21:33
 (F) Second Final Flow 54 Mileage (130) _____ Comments _____
 (G) Final Shut-In 670 Sampler EM Tool _____
 (H) Final Hydrostatic 2005 Straddle _____
 Shale Packer _____
 Extra Packer _____
 Extra Recorder _____
 Day Standby _____
 Accessibility _____

Initial Open 30 Ruined Shale Packer _____
 Initial Shut-In 45 Ruined Packer _____
 Final Flow 60 Extra Copies _____
 Final Shut-In 90 Sub Total _____
 Sub Total _____ Total _____
 MP/DST Disc't

Approved By [Signature] Our Representative [Signature]

TriLOBITE TESTING INC. shall not be liable for damaged of any kind of the property or personnel of the one for whom a test is made, or for any loss suffered or sustained, directly or indirectly, through the use of its equipment, or its statements or opinion concerning the results of any test, tools lost or damaged in the hole shall be paid for at cost by the party for whom the test is made.



TRILOBITE TESTING, INC.

DRILL STEM TEST REPORT

Prolific Resources
 7701 E Kellog Dr Ste 586
 Wichita, KS 67207
 ATTN: Jeff Burk

2-22S-18W Pawnee
Roesler 6
 Job Ticket: 63826 **DST#: 4**
 Test Start: 2018.09.30 @ 14:41:22

GENERAL INFORMATION:

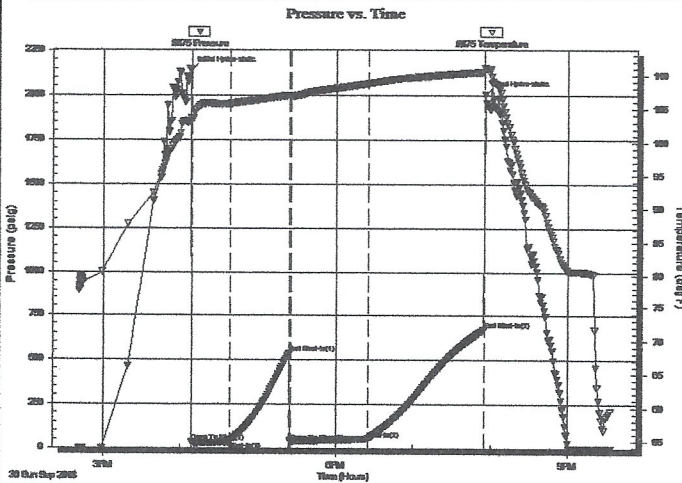
Formation: **Viola**
 Deviated: No Whipstock: ft (KB)
 Time Tool Opened: 16:08:24
 Time Test Ended: 21:33:24
 Interval: **4123.00 ft (KB) To 4170.00 ft (KB) (TVD)**
 Total Depth: 4170.00 ft (KB) (TVD)
 Hole Diameter: 7.88 inches Hole Condition: Good
 Test Type: Conventional Bottom Hole (Reset)
 Tester: Leal Cason
 Unit No: 74
 Reference Elevations: 2049.00 ft (KB)
 2042.00 ft (CF)
 KB to GR/CF: 7.00 ft

Serial #: 8875

Inside

Press@RunDepth: 53.90 psig @ 4124.00 ft (KB) Capacity: psig
 Start Date: 2018.09.30 End Date: 2018.09.30 Last Calib.: 2018.09.30
 Start Time: 14:41:22 End Time: 21:33:24 Time On Btm: 2018.09.30 @ 16:07:39
 Time Off Btm: 2018.09.30 @ 19:55:39

TEST COMMENT: IF: Strong Blow, BOB in 8 minutes, Built to 29 inches
 IS: No Blow Back
 FF: Fair Blow, BOB in 10 minutes, Built to 34 inches
 FS: No Blow Back



PRESSURE SUMMARY

Time (Min.)	Pressure (psig)	Temp (deg F)	Annotation
0	2139.15	103.62	Initial Hydro-static
1	35.28	103.46	Open To Flow (1)
31	37.53	105.81	Shut-In(1)
77	536.63	107.00	End Shut-In(1)
78	36.23	106.94	Open To Flow (2)
138	53.90	108.79	Shut-In(2)
228	669.70	110.61	End Shut-In(2)
229	2005.37	111.17	Final Hydro-static

Recovery

Length (ft)	Description	Volume (bbl)
0.00	230 GIP	0.00
80.00	OCM 10%O 90%M	1.12

* Recovery from multiple tests

Gas Rates

	Choke (inches)	Pressure (psig)	Gas Rate (Mcf/d)

Serial #: 8875

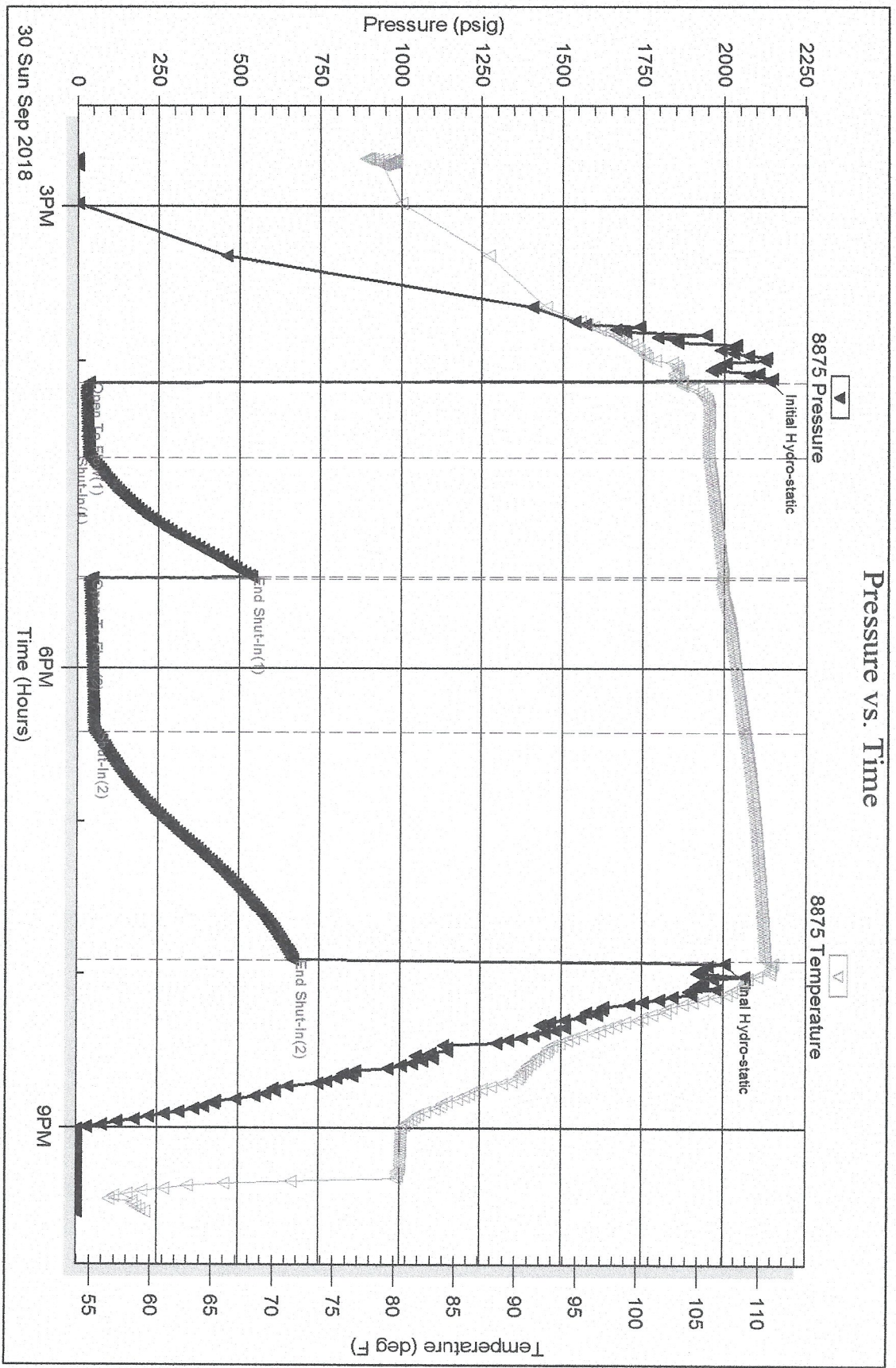
Inside

Prolific Resources

Roesler 6

DST Test Number: 4

Pressure vs. Time



Tribble Testing, Inc

Ref. No: 63826

Printed: 2018.09.30 @ 21:40:10