



TRILOBITE TESTING, INC

DRILL STEM TEST REPORT

Fossil Resources LLC

111 W 36th St
Hays, KS 67601

ATTN: Lyle Herrman/ Taylor

11-13-36 Logan, Ks

Plummer #1

Job Ticket: 63802

DST#: 1

Test Start: 2017.05.16 @ 13:18:07

GENERAL INFORMATION:

Formation: **LKC**
 Deviated: No Whipstock: ft (KB)
 Time Tool Opened: 15:02:07
 Time Test Ended: 19:57:07

Test Type: Conventional Bottom Hole (Initial)
 Tester: Brandon Turley
 Unit No: 79

Interval: **4135.00 ft (KB) To 4170.00 ft (KB) (TVD)**
 Total Depth: 4170.00 ft (KB) (TVD)
 Hole Diameter: 7.88 inches Hole Condition: Good

Reference Elevations: 3007.00 ft (KB)
 2997.00 ft (CF)
 KB to GR/CF: 10.00 ft

Serial #: 8166

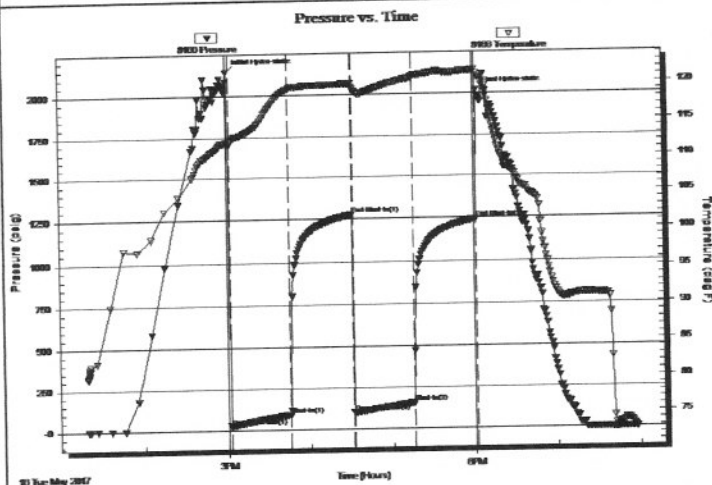
Outside

Press@RunDepth: 155.05 psig @ 4136.00 ft (KB)
 Start Date: 2017.05.16 End Date: 2017.05.16
 Start Time: 13:18:07 End Time: 19:57:07

Capacity: 8000.00 psig
 Last Calib.: 2017.05.16
 Time On Btm: 2017.05.16 @ 15:01:07
 Time Off Btm: 2017.05.16 @ 18:02:07

TEST COMMENT: IF: 1/4 blow built to 7.
 IS: No return.
 FF: BOB in 40 min.
 FS: No return.

PRESSURE SUMMARY



Time (Min.)	Pressure (psig)	Temp (deg F)	Annotation
0	2140.08	112.12	Initial Hydro-static
1	23.78	111.65	Open To Flow (1)
45	89.66	119.30	Shut-In(1)
90	1271.51	119.99	End Shut-In(1)
91	100.08	119.49	Open To Flow (2)
135	155.05	120.73	Shut-In(2)
180	1240.37	121.71	End Shut-In(2)
181	2013.62	121.12	Final Hydro-static

Recovery

Length (ft)	Description	Volume (bbl)
62.00	mcw 90%w 10%m	0.87
124.00	ocmw 5%o 55%w 40%m	1.74
93.00	ocw m 30%o 30%w 40%m	1.30
31.00	oil 100%o	0.43

Gas Rates

Choke (inches)	Pressure (psig)	Gas Rate (Mcf/d)

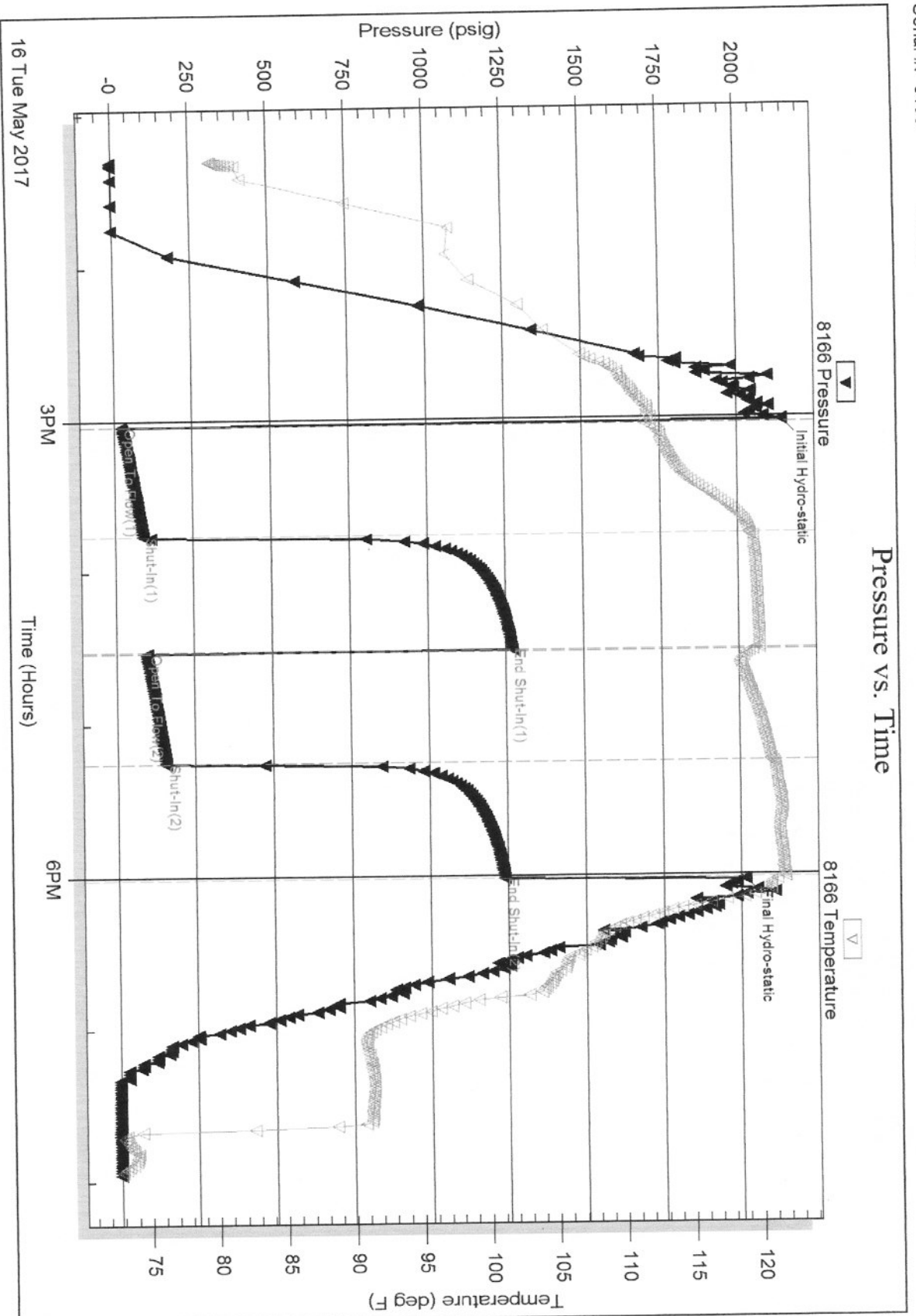
Serial #: 8166

Outside Fossil Resources LLC

Flummer #1

DST Test Number: 1

Pressure vs. Time



Triobite Testing, Inc

Ref. No: 63802

Printed: 2017.05.16 @ 20:06:27



TRILOBITE TESTING, INC.

DRILL STEM TEST REPORT

Fossil Resources LLC

111 W 36th St
Hays, KS 67601

ATTN: Lyle Herrman/ Taylor

11-13-36 Logan, Ks

Plummer #1

Job Ticket: 63802

DST#: 1

Test Start: 2017.05.16 @ 13:18:07

GENERAL INFORMATION:

Formation: **LKC**
 Deviated: No Whipstock: ft (KB)
 Time Tool Opened: 15:02:07
 Time Test Ended: 19:57:07

Test Type: Conventional Bottom Hole (Initial)
 Tester: Brandon Turley
 Unit No: 79

Interval: **4135.00 ft (KB) To 4170.00 ft (KB) (TVD)**
 Total Depth: 4170.00 ft (KB) (TVD)
 Hole Diameter: 7.88 inches Hole Condition: Good

Reference Elevations: 3007.00 ft (KB)
 2997.00 ft (CF)
 KB to GR/CF: 10.00 ft

Serial #: 8166

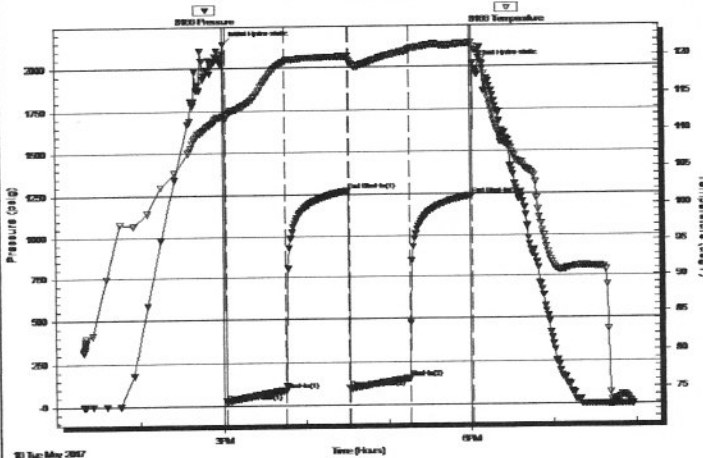
Outside

Press@RunDepth: 155.05 psig @ 4136.00 ft (KB)
 Start Date: 2017.05.16 End Date: 2017.05.16
 Start Time: 13:18:07 End Time: 19:57:07

Capacity: 8000.00 psig
 Last Calib.: 2017.05.16
 Time On Btm: 2017.05.16 @ 15:01:07
 Time Off Btm: 2017.05.16 @ 18:02:07

TEST COMMENT: IF: 1/4 blow built to 7.
 IS: No return.
 FF: BOB in 40 min.
 FS: No return.

Pressure vs. Time



PRESSURE SUMMARY

Time (Min.)	Pressure (psig)	Temp (deg F)	Annotation
0	2140.08	112.12	Initial Hydro-static
1	23.78	111.65	Open To Flow (1)
45	89.66	119.30	Shut-In(1)
90	1271.51	119.99	End Shut-In(1)
91	100.08	119.49	Open To Flow (2)
135	155.05	120.73	Shut-In(2)
180	1240.37	121.71	End Shut-In(2)
181	2013.62	121.12	Final Hydro-static

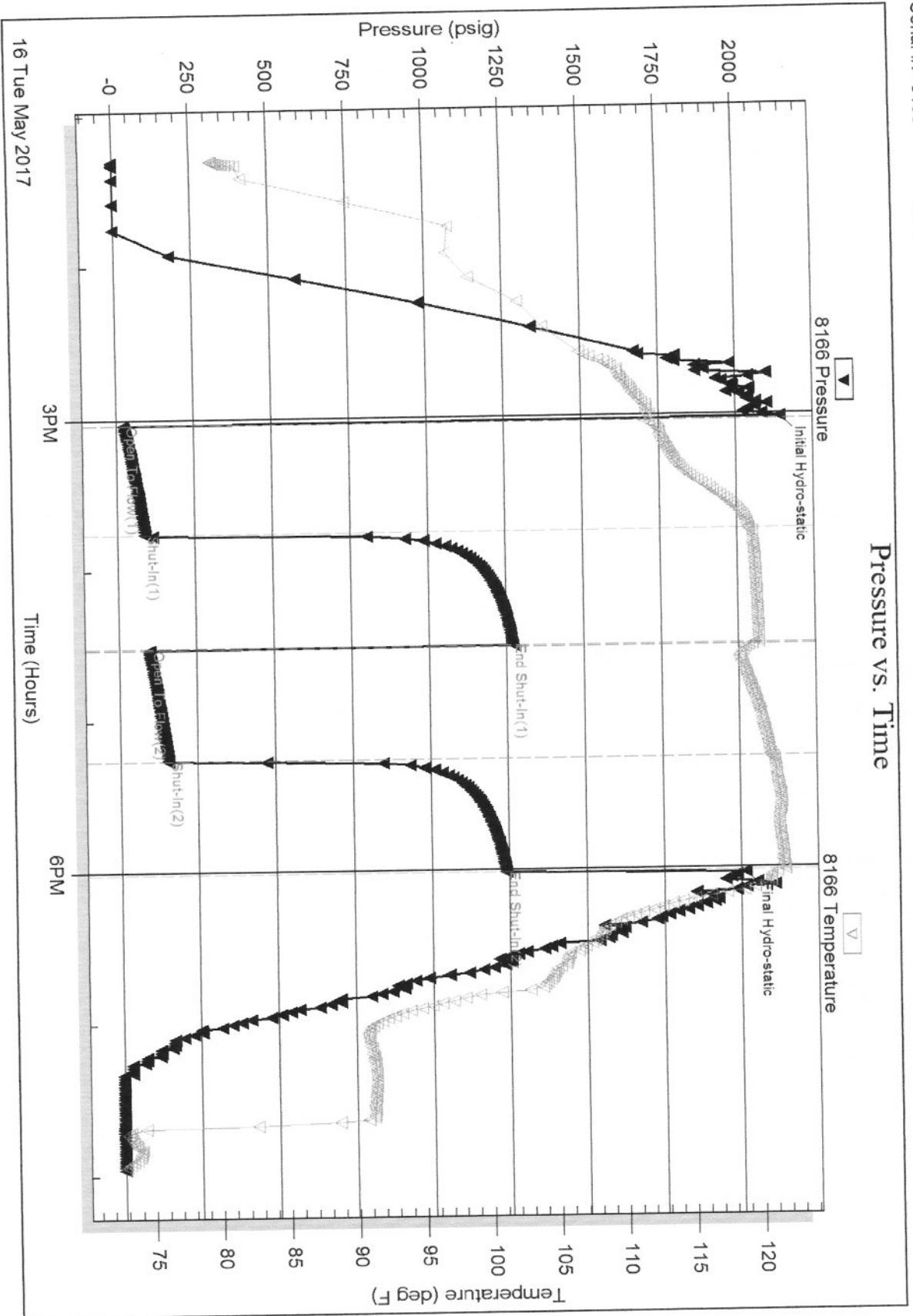
Recovery

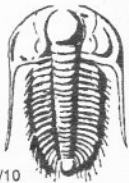
Length (ft)	Description	Volume (bbl)
62.00	mcw 90%w 10%m	0.87
124.00	ocmw 5%o 55%w 40%m	1.74
93.00	ocw m 30%o 30%w 40%m	1.30
31.00	oil 100%o	0.43

Gas Rates

	Choke (inches)	Pressure (psig)	Gas Rate (Mcf/d)

Pressure vs. Time





TRILOBITE TESTING INC.

1515 Commerce Parkway • Hays, Kansas 67601

Test Ticket

NO. 63802

Well Name & No. Plummer #1 Test No. 1 Date 5-16-17
 Company Fossil Resources LLE Elevation 3007 KB 2997 GL
 Address 111 W 36th St Hays, KS 67601
 Co. Rep / Geo. Lyle Herrmann / Taylor Leiter Rig Southwind #1
 Location: Sec. 11 Twp. 13 Rge. 36 Co. L099m State KS

Interval Tested 4135 4190 Zone Tested LKC
 Anchor Length 35 Drill Pipe Run 4121 Mud Wt. 9.2
 Top Packer Depth 4130 Drill Collars Run — Vis 48
 Bottom Packer Depth 4135 Wt. Pipe Run — WL 12.0
 Total Depth 4190 Chlorides 15000 ppm System LCM 2
 Blow Description IF: 1/4 blow built to 7,
IS: No return.
FF: BoB in 40 min.
FS: No return.

Rec	Feet of	%gas	%oil	%water	%mud
<u>31</u>	<u>Free oil</u>	<u>100</u>	<u>—</u>	<u>—</u>	<u>—</u>
<u>93</u>	<u>ocwm</u>	<u>30</u>	<u>30</u>	<u>40</u>	<u>—</u>
<u>124</u>	<u>ocmw</u>	<u>5</u>	<u>55</u>	<u>40</u>	<u>—</u>
<u>62</u>	<u>mcw</u>	<u>—</u>	<u>90</u>	<u>10</u>	<u>—</u>

Rec Total 310 BHT 121 Gravity — API RW .31 @ 82 ° F Chlorides 19,000 ppm

(A) Initial Hydrostatic 2140 Test 11:15
 (B) First Initial Flow 23 Jars 13:18
 (C) First Final Flow 89 Safety Joint 15:02
 (D) Initial Shut-In 1271 Circ Sub NIC 18:02
 (E) Second Initial Flow 100 Hourly Standby 20:00
 (F) Second Final Flow 155 Mileage 130- Comments on the bank
 (G) Final Shut-In 1240 Sampler 9 + 12:00
 (H) Final Hydrostatic 2013 Straddle Ruined Shale Packer
 Shale Packer Ruined Packer
 Extra Packer Extra Copies
 Extra Recorder
 Day Standby
 Accessibility
 Sub Total _____ Total _____
 MP/DST Disc't _____

Approved By [Signature] Our Representative [Signature]

Trilobite Testing Inc. shall not be liable for damaged of any kind of the property or personnel of the one for whom a test is made, or for any loss suffered or sustained, directly or indirectly, through the use of its equipment, or its statements or opinion concerning the results of any test, tools lost or damaged in the hole shall be paid for at cost by the party for whom the test is made.