



**TRILOBITE  
TESTING, INC.**

# DRILL STEM TEST REPORT

Samuel Gary Jr. & Associates, Inc.

**S17-5S-23W Norton Co KS**

1515 Wynkoop STE 700  
Denver Co, 80202

**Schuckman #1-17**

Job Ticket: 63204

**DST#: 1**

ATTN: Jim C. Musgrove/ Spe

Test Start: 2017.04.24 @ 22:52:00

## GENERAL INFORMATION:

Formation: **Toronto & LKC 'A' zo**

Deviated: No Whipstock: ft (KB)

Time Tool Opened: 01:09:30

Time Test Ended: 08:17:45

Test Type: Conventional Bottom Hole (Initial)

Tester: Spencer J. Staab

Unit No: 84

Interval: **3321.00 ft (KB) To 3392.00 ft (KB) (TVD)**

Reference Elevations: 2203.00 ft (KB)

Total Depth: 3392.00 ft (KB) (TVD)

2195.00 ft (CF)

Hole Diameter: 7.88 inches Hole Condition: Fair

KB to GR/CF: 8.00 ft

**Serial #: 8934**

**Inside**

Press@RunDepth: 73.81 psig @ 3328.00 ft (KB)

Capacity: 8000.00 psig

Start Date: 2017.04.24

End Date:

2017.04.25

Last Calib.:

2017.04.25

Start Time: 22:52:15

End Time:

08:17:45

Time On Btm:

2017.04.25 @ 01:08:45

Time Off Btm:

2017.04.25 @ 05:32:30

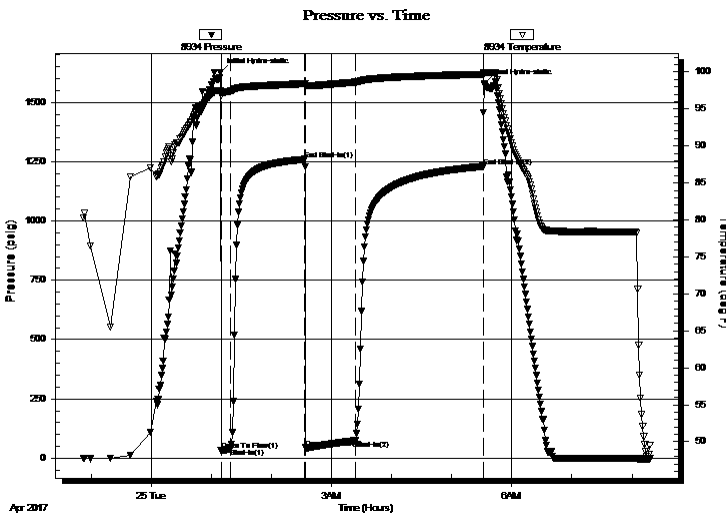
**TEST COMMENT:** 10-IF-Weak Blow throughout; built from a surface to a 3 inch Blow

75-ISI-No Blow Back

30-FF-Very Weak Surface Blow throughout; After 5 minutes it built from a surface to a 1/2 blow

120-FSI-No Blow Back

## PRESSURE SUMMARY



Time (Min.)	Pressure (psig)	Temp (deg F)	Annotation
0	1626.12	97.50	Initial Hydro-static
1	31.35	96.89	Open To Flow (1)
11	39.46	97.43	Shut-In(1)
85	1259.75	98.42	End Shut-In(1)
86	42.99	98.01	Open To Flow (2)
135	73.81	98.62	Shut-In(2)
263	1230.15	99.69	End Shut-In(2)
264	1577.70	99.82	Final Hydro-static

## Recovery

Length (ft)	Description	Volume (bbl)
50.00	OCM 30% O 70%M	0.37
50.00	MO 50% M 50%O	0.37
25.00	MCO 40%M 60%O	0.18

## Gas Rates

	Choke (inches)	Pressure (psig)	Gas Rate (Mcf/d)





**TRILOBITE TESTING, INC.**

# DRILL STEM TEST REPORT

Samuel Gary Jr. & Associates, Inc.

**S17-5S-23W Norton Co KS**

1515 Wynkoop STE 700  
Denver Co, 80202

**Schuckman #1-17**

Job Ticket: 63204

**DST#: 1**

ATTN: Jim C. Musgrove/ Spe

Test Start: 2017.04.24 @ 22:52:00

## GENERAL INFORMATION:

Formation: **Toronto & LKC 'A' zo**

Deviated: No Whipstock: ft (KB)

Time Tool Opened: 01:09:30

Time Test Ended: 08:17:45

Test Type: Conventional Bottom Hole (Initial)

Tester: Spencer J. Staab

Unit No: 84

Interval: **3321.00 ft (KB) To 3392.00 ft (KB) (TVD)**

Reference Elevations: 2203.00 ft (KB)

Total Depth: 3392.00 ft (KB) (TVD)

2195.00 ft (CF)

Hole Diameter: 7.88 inches Hole Condition: Fair

KB to GR/CF: 8.00 ft

**Serial #: 8368**

**Fluid**

Press@RunDepth: psig @ 3286.00 ft (KB)

Capacity: 8000.00 psig

Start Date: 2017.04.24

End Date:

2017.04.25

Last Calib.:

2017.04.25

Start Time:

22:52:15

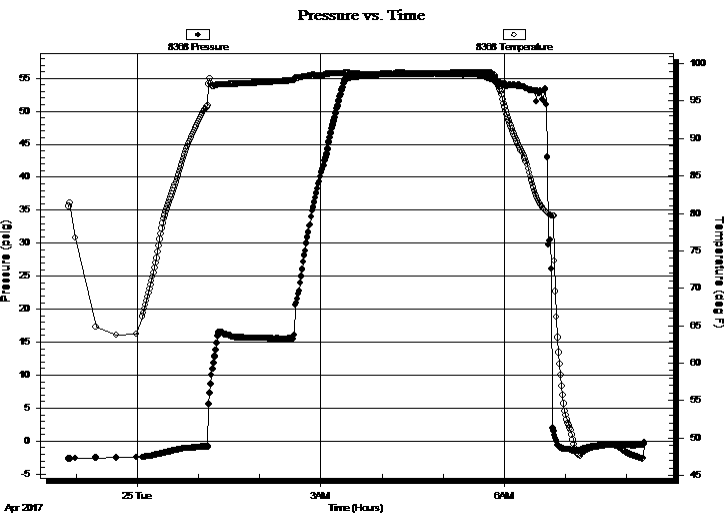
End Time:

08:17:45

Time On Btm:

Time Off Btm:

**TEST COMMENT:** 10-IF-Weak Blow throughout; built from a surface to a 3 inch Blow  
75-ISI-No Blow Back  
30-FF-Very Weak Surface Blow throughout; After 5 minutes it built from a surface to a 1/2 blow  
120-FSI-No Blow Back



## PRESSURE SUMMARY

Time (Min.)	Pressure (psig)	Temp (deg F)	Annotation

## Recovery

Length (ft)	Description	Volume (bbl)
50.00	OCM 30% O 70%M	0.37
50.00	MO 50% M 50%O	0.37
25.00	MCO 40%M 60%O	0.18

## Gas Rates

	Choke (inches)	Pressure (psig)	Gas Rate (Mcf/d)



**TRILOBITE  
TESTING, INC.**

# DRILL STEM TEST REPORT

**FLUID SUMMARY**

Samuel Gary Jr. & Associates, Inc.

**S17-5S-23W Norton Co KS**

1515 Wynkoop STE 700  
Denver Co, 80202

**Schuckman #1-17**

Job Ticket: 63204

**DST#: 1**

ATTN: Jim C. Musgrove/ Spe

Test Start: 2017.04.24 @ 22:52:00

## Mud and Cushion Information

Mud Type: Gel Chem

Cushion Type:

Oil API:

deg API

Mud Weight: 9.00 lb/gal

Cushion Length:

ft

Water Salinity:

ppm

Viscosity: 60.00 sec/qt

Cushion Volume:

bbbl

Water Loss: 7.99 in<sup>3</sup>

Gas Cushion Type:

Resistivity: ohm.m

Gas Cushion Pressure:

psig

Salinity: 2000.00 ppm

Filter Cake: inches

## Recovery Information

Recovery Table

Length ft	Description	Volume bbl
50.00	OCM 30% O 70%M	0.367
50.00	MO 50% M 50%O	0.367
25.00	MCO 40%M 60%O	0.184

Total Length: 125.00 ft      Total Volume: 0.918 bbl

Num Fluid Samples: 0

Num Gas Bombs: 0

Serial #:

Laboratory Name:

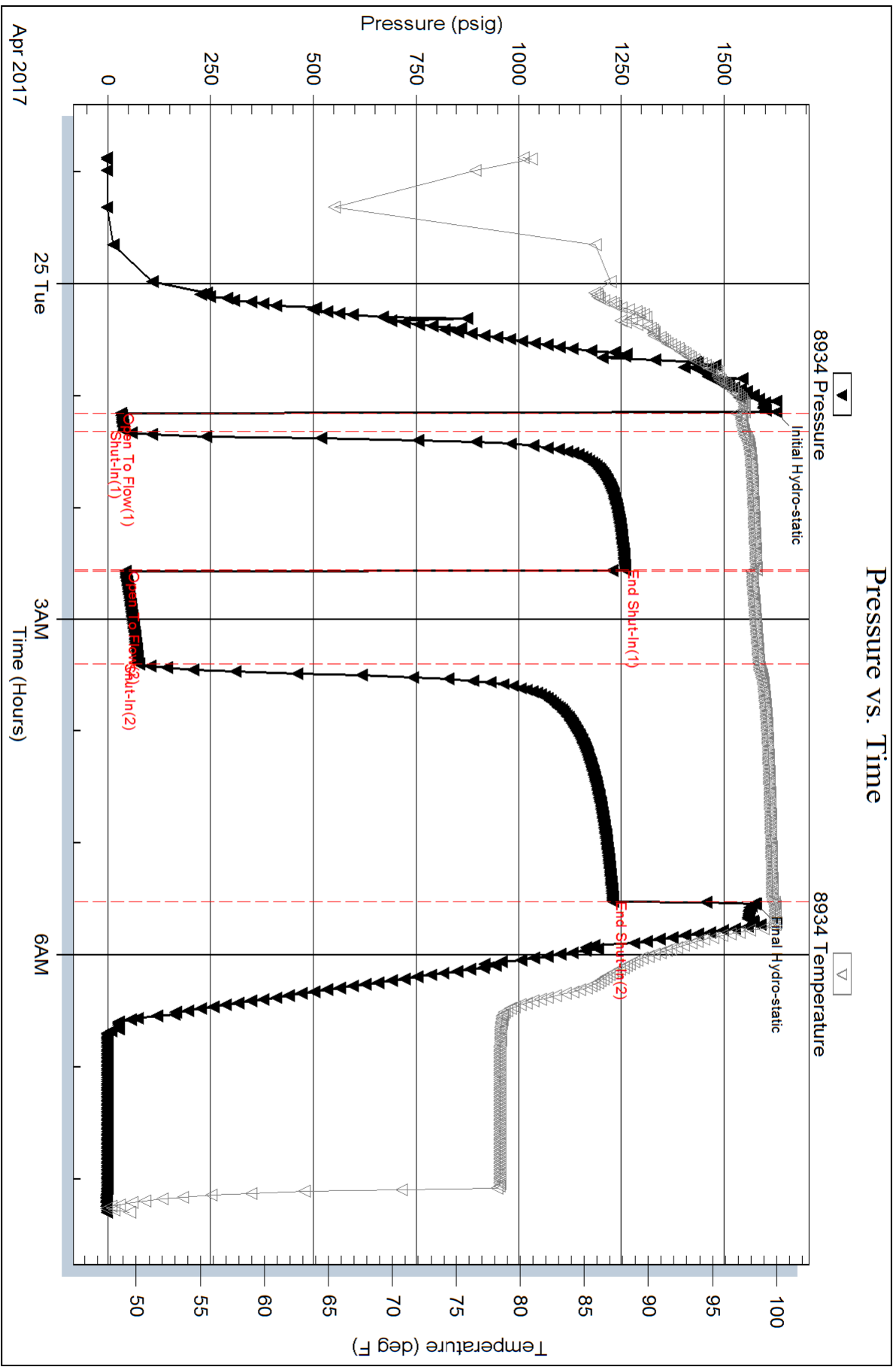
Laboratory Location:

Recovery Comments: 2800 ML of Gas in Sampler

1200 ML of Oil in Sampler

4000 Total ML

460 PSI of pressure in sampler



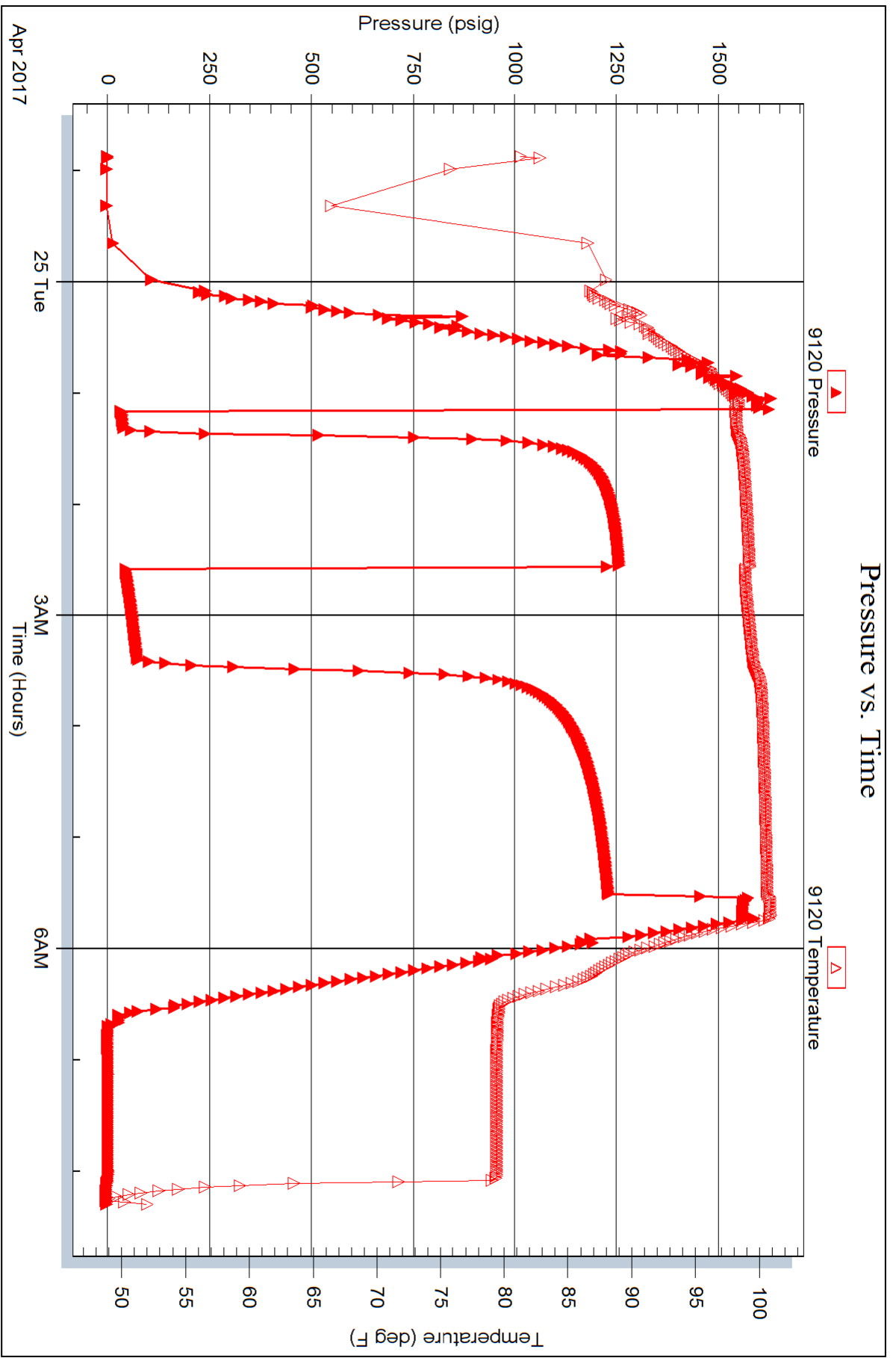
Serial #: 9120

Inside

Samuel Gary Jr. & Associates, Inc.

Schuckman #1-17

DST Test Number: 1



Serial #: 8368

Fluid

Samuel Gary Jr. & Associates, Inc.

Schuckman #1-17

DST Test Number: 1

