



TRILOBITE TESTING, INC.

DRILL STEM TEST REPORT

Darrah Oil Company LLC

22 - 2S. - 27W Decatur, KS

125 N. Market
Suite 1425
Wichita, KS 67202
ATTN: Roger Martin

Long # 3-22

Job Ticket: 65349

DST#: 5

Test Start: 2019.03.22 @ 04:23:00

GENERAL INFORMATION:

Formation: **LKC " G - L "**

Deviated: No Whipstock: ft (KB)

Time Tool Opened: 06:20:30

Time Test Ended: 09:34:09

Test Type: Conventional Bottom Hole (Reset)

Tester: Martine Salinas

Unit No: 82

Interval: 3574.00 ft (KB) To 3718.00 ft (KB) (TVD)

Reference Elevations: 2627.00 ft (KB)

Total Depth: 3718.00 ft (KB) (TVD)

2622.00 ft (CF)

Hole Diameter: 7.88 inches Hole Condition: Good

KB to GR/CF: 5.00 ft

Serial #: 8959

Inside

Press@RunDepth: 327.24 psig @ 3575.00 ft (KB)

Capacity: 8000.00 psig

Start Date: 2019.03.22

End Date:

2019.03.22

Last Calib.:

2019.03.22

Start Time: 04:23:01

End Time:

09:34:10

Time On Btm:

2019.03.22 @ 06:18:20

Time Off Btm:

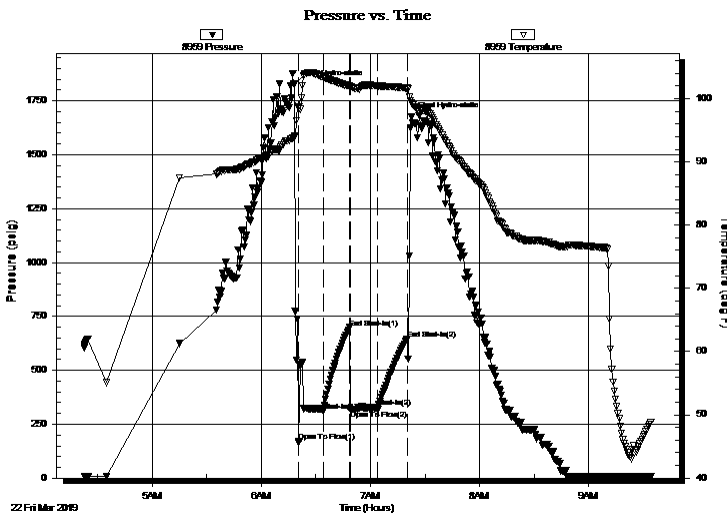
2019.03.22 @ 07:22:40

TEST COMMENT: 15-IF-4" blow built to B.O.B (12 inches) 15 secs (blow increased to 78 3/4" & decreased to 76 1/2")

15-ISI-No blow

15-FF-S.blow @ 5 mins built to 1 1/2"

15-FSI-No blow



PRESSURE SUMMARY

Time (Min.)	Pressure (psig)	Temp (deg F)	Annotation
0	1825.67	93.92	Initial Hydro-static
3	171.21	98.58	Open To Flow (1)
16	309.50	103.39	Shut-In(1)
31	698.44	102.00	End Shut-In(1)
31	316.65	101.85	Open To Flow (2)
46	327.24	102.04	Shut-In(2)
62	644.33	101.66	End Shut-In(2)
65	1674.16	99.35	Final Hydro-static

Recovery

Length (ft)	Description	Volume (bbl)
185.00	HMCW 25%M, 75%W	2.60
250.00	HWCM 44%W, 56%M	3.51
200.00	100%Mud	2.81
0.00	Tool Sample SOSWM 1%O, 49%W, 50%N.0.00	

Gas Rates

	Choke (inches)	Pressure (psig)	Gas Rate (Mcf/d)

* Recovery from multiple tests



TRILOBITE TESTING, INC.

DRILL STEM TEST REPORT

Darrah Oil Company LLC

22 - 2S. - 27W Decatur, KS

125 N. Market
Suite 1425
Wichita, KS 67202
ATTN: Roger Martin

Long # 3-22

Job Ticket: 65349

DST#: 5

Test Start: 2019.03.22 @ 04:23:00

GENERAL INFORMATION:

Formation: **LKC " G - L "**

Deviated: No Whipstock: ft (KB)

Time Tool Opened: 06:20:30

Time Test Ended: 09:34:09

Test Type: Conventional Bottom Hole (Reset)

Tester: Martine Salinas

Unit No: 82

Interval: 3574.00 ft (KB) To 3718.00 ft (KB) (TVD)

Reference Elevations: 2627.00 ft (KB)

Total Depth: 3718.00 ft (KB) (TVD)

2622.00 ft (CF)

Hole Diameter: 7.88 inches Hole Condition: Good

KB to GR/CF: 5.00 ft

Serial #: 8734 Outside

Press@RunDepth: psig @ 3575.00 ft (KB)

Capacity: 8000.00 psig

Start Date: 2019.03.22

End Date:

2019.03.22

Last Calib.:

2019.03.22

Start Time: 04:23:01

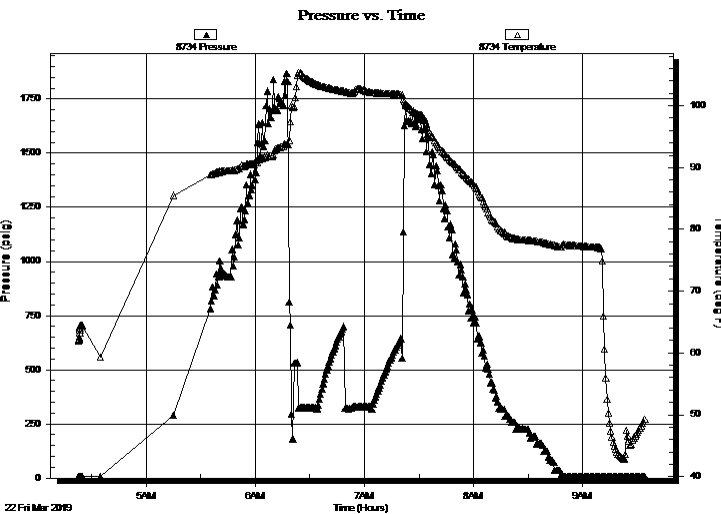
End Time:

09:34:10

Time On Btm:

Time Off Btm:

TEST COMMENT: 15-IF-4" blow built to B.O.B (12 inches) 15 secs (blow increased to 78 3/4" & decreased to 76 1/2")
15-ISI-No blow
15-FF-S.blow @ 5 mins built to 1 1/2"
15-FSI-No blow



PRESSURE SUMMARY

Time (Min.)	Pressure (psig)	Temp (deg F)	Annotation

Recovery

Gas Rates

Length (ft)	Description	Volume (bbl)
185.00	HMCW 25%M, 75%W	2.60
250.00	HWCM 44%W, 56%M	3.51
200.00	100%Mud	2.81
0.00	Tool Sample SOSWM 1%O, 49%W, 50%N.0.00	

	Choke (inches)	Pressure (psig)	Gas Rate (Mcf/d)

* Recovery from multiple tests



**TRILOBITE
TESTING, INC.**

DRILL STEM TEST REPORT

FLUID SUMMARY

Darrah Oil Company LLC

22 - 2S. - 27W Decatur,KS

125 N. Market
Suite 1425
Wichita, KS 67202
ATTN: Roger Martin

Long # 3-22

Job Ticket: 65349

DST#: 5

Test Start: 2019.03.22 @ 04:23:00

Mud and Cushion Information

Mud Type: Gel Chem

Cushion Type:

Oil API:

deg API

Mud Weight: 9.00 lb/gal

Cushion Length:

ft

Water Salinity:

63000 ppm

Viscosity: 60.00 sec/qt

Cushion Volume:

bbbl

Water Loss: 6.00 in³

Gas Cushion Type:

Resistivity: ohm.m

Gas Cushion Pressure:

psig

Salinity: 700.00 ppm

Filter Cake: 1.00 inches

Recovery Information

Recovery Table

Length ft	Description	Volume bbbl
185.00	HMCW 25%M, 75%W	2.595
250.00	HWCM 44%W, 56%M	3.507
200.00	100%Mud	2.805
0.00	Tool Sample SOSWM 1%O, 49%W, 50%M	0.000

Total Length: 635.00 ft

Total Volume: 8.907 bbl

Num Fluid Samples: 0

Num Gas Bombs: 0

Serial #:

Laboratory Name:

Laboratory Location:

Recovery Comments: RW= .227 @ 40 degs = 63,000 PPM

Serial #: 8959

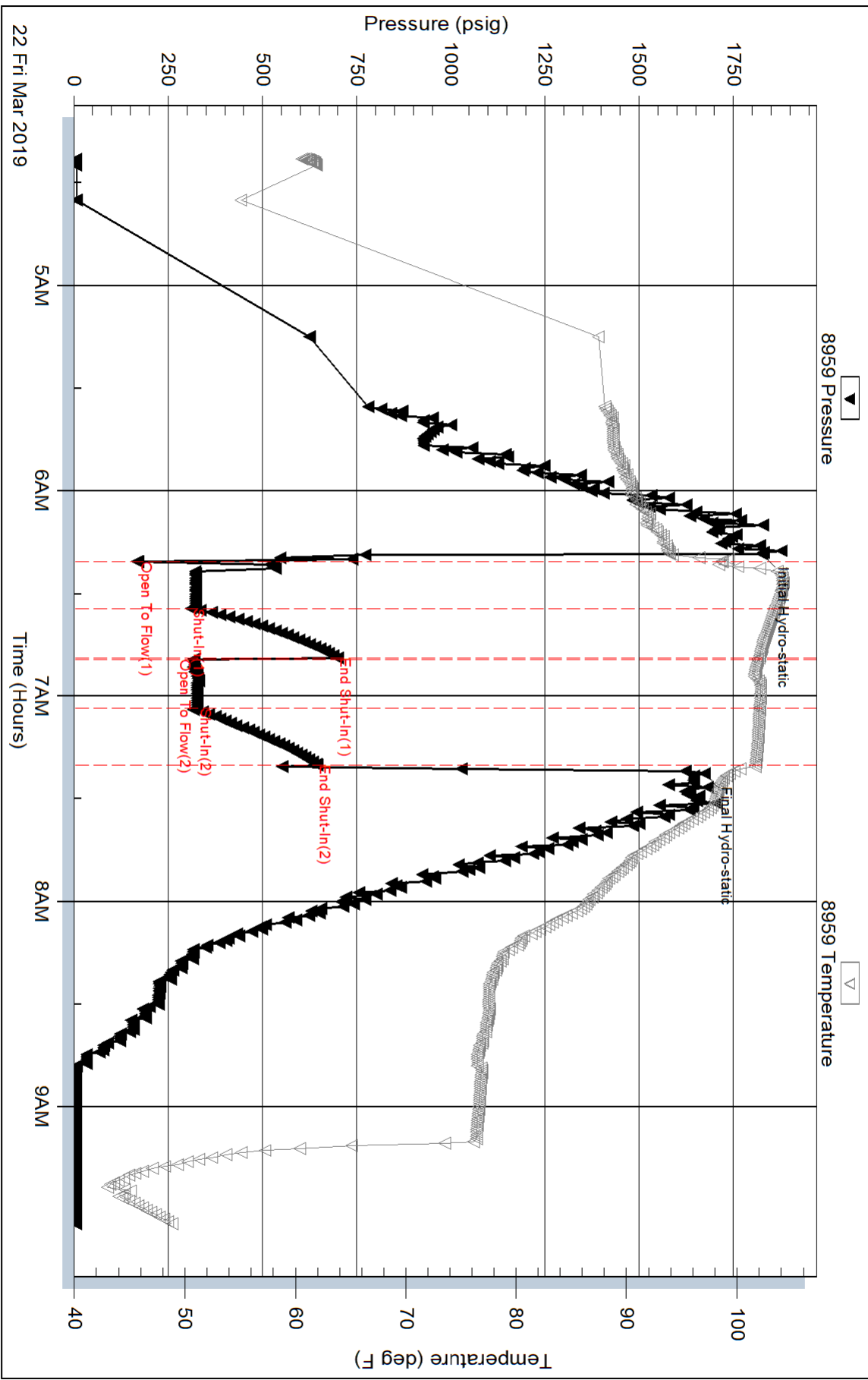
Inside

Darrah Oil Company LLC

Long #3-22

DST Test Number: 5

Pressure vs. Time



Serial #: 8734

Outside Darrah Oil Company LLC

Long #3-22

DST Test Number: 5

