



## DRILL STEM TEST REPORT

Prepared For: **Brito Oil Company, Inc.**

8100 E. 22nd St. N Ste. 600-R  
Wichita, KS 67226

ATTN: Robert Hendrix

### **Albin Unit #1-2**

### **2-15S-26W Gove,KS**

Start Date: 2019.09.09 @ 08:36:40

End Date: 2019.09.09 @ 14:41:31

Job Ticket #: 64488                      DST #: 1

Trilobite Testing, Inc  
1515 Commerce Parkway Hays, KS 67601  
ph: 785-625-4778 fax: 785-625-5620

Printed: 2019.09.17 @ 09:56:57



**TRILOBITE TESTING, INC.**

# DRILL STEM TEST REPORT

Brito Oil Company, Inc.

**2-15S-26W Gove, KS**

8100 E. 22nd St. N Ste. 600-R  
Wichita, KS 67226

**Albin Unit #1-2**

Job Ticket: 64488

**DST#: 1**

ATTN: Robert Hendrix

Test Start: 2019.09.09 @ 08:36:40

## GENERAL INFORMATION:

Formation: **LKC "H-J"**  
 Deviated: No Whipstock: ft (KB)  
 Time Tool Opened: 11:07:31  
 Time Test Ended: 14:41:31  
 Interval: **3759.00 ft (KB) To 3847.00 ft (KB) (TVD)**  
 Total Depth: 3847.00 ft (KB) (TVD)  
 Hole Diameter: 7.88 inches Hole Condition: Fair  
 Test Type: Conventional Bottom Hole (Initial)  
 Tester: Brannan Lonsdale  
 Unit No: 73  
 Reference Elevations: 2307.00 ft (KB)  
 2297.00 ft (CF)  
 KB to GR/CF: 10.00 ft

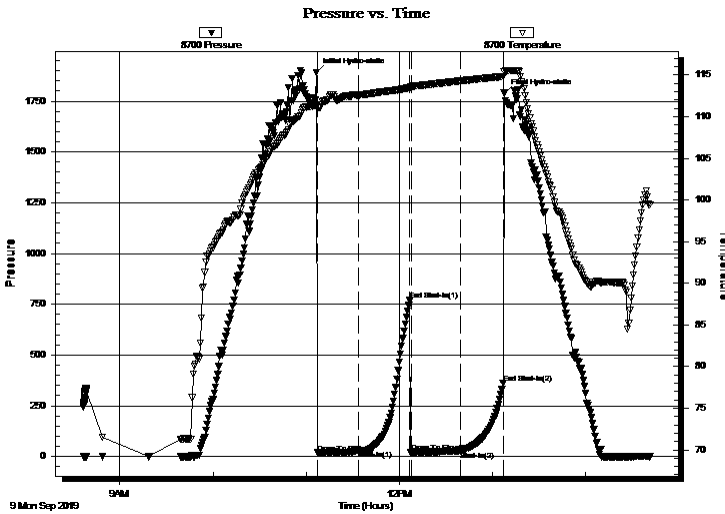
## Serial #: 8700

Outside

Press@RunDepth: 26.55 psig @ 3760.00 ft (KB) Capacity: 8000.00 psig  
 Start Date: 2019.09.09 End Date: 2019.09.09 Last Calib.: 2019.09.09  
 Start Time: 08:36:41 End Time: 14:41:31 Time On Btm: 2019.09.09 @ 11:06:46  
 Time Off Btm: 2019.09.09 @ 13:07:31

TEST COMMENT: 30- IF- Slow ly built to 1.50"  
 30- IS- No blow  
 30- FF- Slow ly built to 1"  
 30- FSI- No blow

## PRESSURE SUMMARY



Time (Min.)	Pressure (psig)	Temp (deg F)	Annotation
0	1891.17	111.40	Initial Hydro-static
1	17.67	111.02	Open To Flow (1)
27	31.87	112.60	Shut-In(1)
60	769.77	113.52	End Shut-In(1)
61	19.04	113.61	Open To Flow (2)
93	26.55	114.30	Shut-In(2)
120	361.18	114.84	End Shut-In(2)
121	1789.46	115.44	Final Hydro-static

## Recovery

Length (ft)	Description	Volume (bbl)
30.00	HOCM, 40%O 60%M	0.43
3.00	CO	0.04

## Gas Rates

	Choke (inches)	Pressure (psig)	Gas Rate (Mcf/d)





**TRILOBITE  
TESTING, INC.**

# DRILL STEM TEST REPORT

**TOOL DIAGRAM**

Brito Oil Company, Inc.

**2-15S-26W Gove, KS**

8100 E. 22nd St. N Ste. 600-R  
Wichita, KS 67226

**Albin Unit #1-2**

Job Ticket: 64488

**DST#: 1**

ATTN: Robert Hendrix

Test Start: 2019.09.09 @ 08:36:40

## Tool Information

Drill Pipe:	Length: 3770.00 ft	Diameter: 3.82 inches	Volume: 53.44 bbl	Tool Weight: 2000.00 lb
Heavy Wt. Pipe:	Length: ft	Diameter: inches	Volume: - bbl	Weight set on Packer: 25000.00 lb
Drill Collar:	Length: 0.00 ft	Diameter: 2.25 inches	Volume: 0.00 bbl	Weight to Pull Loose: 50000.00 lb
			<u>Total Volume: - bbl</u>	Tool Chased 0.00 ft
Drill Pipe Above KB:	31.00 ft			String Weight: Initial 42000.00 lb
Depth to Top Packer:	3759.00 ft			Final 42000.00 lb
Depth to Bottom Packer:	ft			
Interval between Packers:	88.00 ft			
Tool Length:	108.00 ft			
Number of Packers:	2	Diameter: 6.75 inches		

Tool Comments:

## Tool Description

Tool Description	Length (ft)	Serial No.	Position	Depth (ft)	Accum. Lengths
Change Over Sub	1.00			3740.00	
Shut In Tool	5.00			3745.00	
Hydraulic tool	5.00			3750.00	
Packer	5.00			3755.00	20.00 Bottom Of Top Packer
Packer	4.00			3759.00	
Stubb	1.00			3760.00	
Recorder	0.00	6771	Inside	3760.00	
Recorder	0.00	8700	Outside	3760.00	
Perforations	19.00			3779.00	
Change Over Sub	1.00			3780.00	
Drill Pipe	63.00			3843.00	
Change Over Sub	1.00			3844.00	
Bullnose	3.00			3847.00	88.00 Bottom Packers & Anchor

**Total Tool Length: 108.00**



**TRILOBITE  
TESTING, INC.**

# DRILL STEM TEST REPORT

## FLUID SUMMARY

Brito Oil Company, Inc.

**2-15S-26W Gove, KS**

8100 E. 22nd St. N Ste. 600-R  
Wichita, KS 67226

**Albin Unit #1-2**

Job Ticket: 64488

**DST#: 1**

ATTN: Robert Hendrix

Test Start: 2019.09.09 @ 08:36:40

### Mud and Cushion Information

Mud Type: Gel Chem

Cushion Type:

Oil API:

34 deg API

Mud Weight: 9.00 lb/gal

Cushion Length:

ft

Water Salinity:

ppm

Viscosity: 59.00 sec/qt

Cushion Volume:

bbbl

Water Loss: 7.18 in<sup>3</sup>

Gas Cushion Type:

Resistivity: ohm.m

Gas Cushion Pressure:

psig

Salinity: 4100.00 ppm

Filter Cake: inches

### Recovery Information

Recovery Table

Length ft	Description	Volume bbbl
30.00	HOCM, 40%O 60%M	0.425
3.00	CO	0.043

Total Length: 33.00 ft      Total Volume: 0.468 bbl

Num Fluid Samples: 0

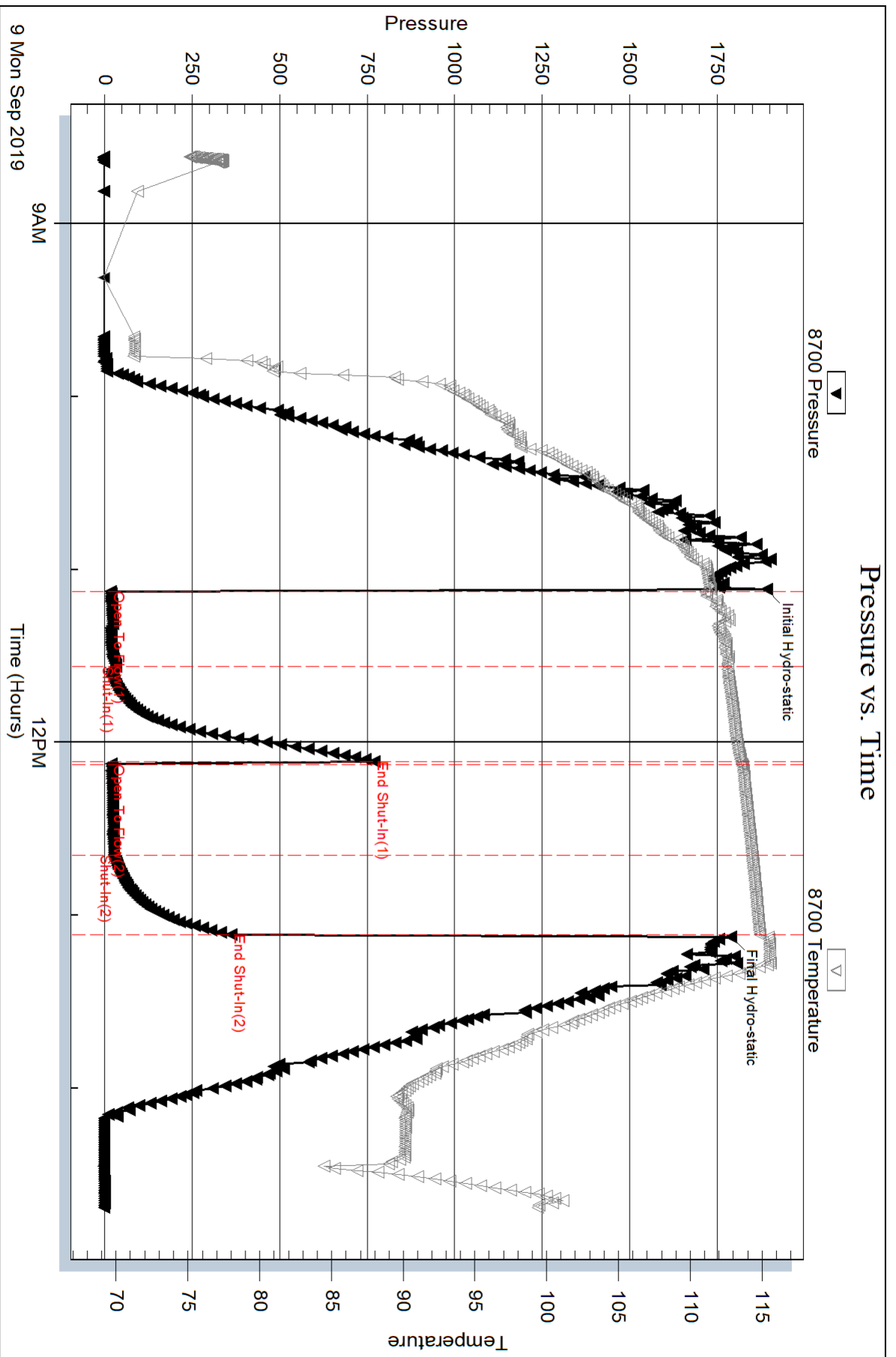
Num Gas Bombs: 0

Serial #:

Laboratory Name:

Laboratory Location:

Recovery Comments:



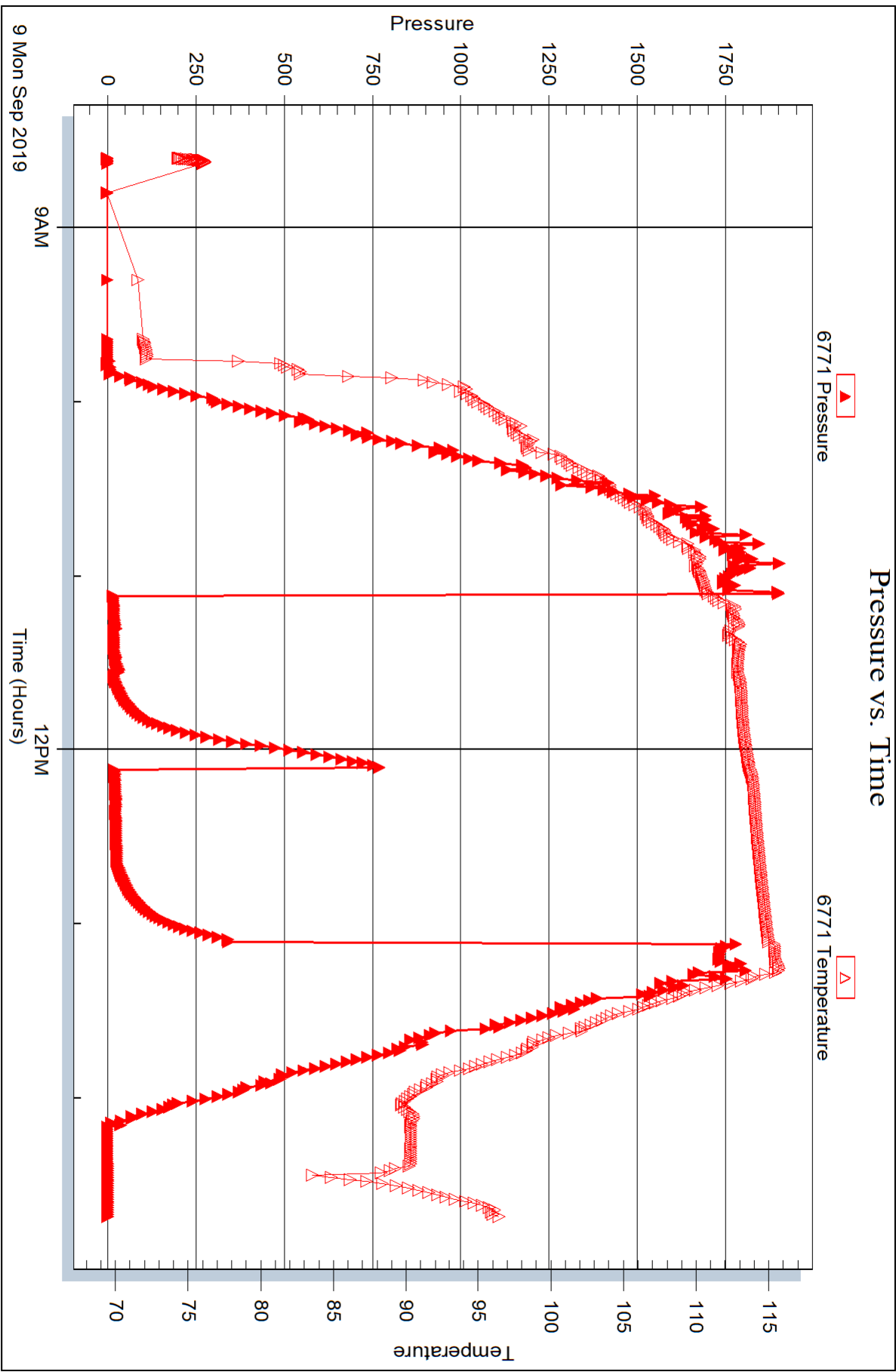
Serial #: 6771

Inside

Brito Oil Company, Inc.

Albin Unit #1-2

DST Test Number: 1



Trilobite Testing, Inc

Ref. No: 64488

Printed: 2019.09.17 @ 09:56:59



## DRILL STEM TEST REPORT

Prepared For: **Brito Oil Company, Inc.**

8100 E. 22nd St. N Ste. 600-R  
Wichita, KS 67226

ATTN: Robert Hendrix

### **Albin Unit #1-2**

### **2-15S-26W Gove,KS**

Start Date: 2019.09.11 @ 03:34:28

End Date: 2019.09.11 @ 10:11:58

Job Ticket #: 64489                      DST #: 2

Trilobite Testing, Inc  
1515 Commerce Parkway Hays, KS 67601  
ph: 785-625-4778 fax: 785-625-5620

Printed: 2019.09.17 @ 09:56:31





**TRILOBITE TESTING, INC.**

# DRILL STEM TEST REPORT

Brito Oil Company, Inc.  
 8100 E. 22nd St. N Ste. 600-R  
 Wichita, KS 67226  
 ATTN: Robert Hendrix

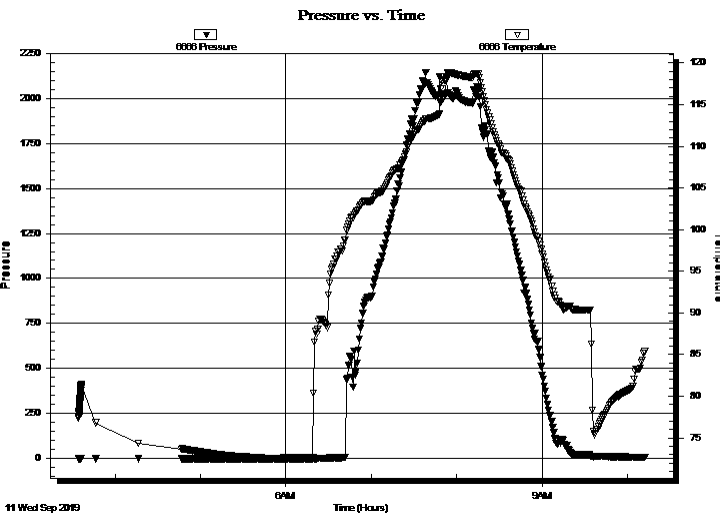
**2-15S-26W Gove, KS**  
**Albin Unit #1-2**  
 Job Ticket: 64489      **DST#: 2**  
 Test Start: 2019.09.11 @ 03:34:28

## GENERAL INFORMATION:

Formation: **Mississippian**  
 Deviated: No      Whipstock:      ft (KB)  
 Time Tool Opened:  
 Time Test Ended: 10:11:58  
 Interval: **4170.00 ft (KB) To 4227.00 ft (KB) (TVD)**  
 Total Depth: 4227.00 ft (KB) (TVD)  
 Hole Diameter: 7.88 inches      Hole Condition: Fair  
 Test Type: Conventional Bottom Hole (Reset)  
 Tester: Brannan Lonsdale  
 Unit No: 69  
 Reference Elevations: 2307.00 ft (KB)  
 2297.00 ft (CF)  
 KB to GR/CF: 10.00 ft

**Serial #: 6666      Inside**  
 Press@RunDepth:      psig @ 4171.00 ft (KB)      Capacity: 8000.00 psig  
 Start Date: 2019.09.11      End Date: 2019.09.11      Last Calib.: 2019.09.11  
 Start Time: 03:34:29      End Time: 10:11:58      Time On Btm:  
 Time Off Btm:

TEST COMMENT: PACKER FAILURE



## PRESSURE SUMMARY

Time (Min.)	Pressure (psig)	Temp (deg F)	Annotation

## Recovery

Length (ft)	Description	Volume (bbl)
130.00	M	1.84

\* Recovery from multiple tests

## Gas Rates

Choke (inches)	Pressure (psig)	Gas Rate (Mcf/d)



**TRILOBITE TESTING, INC.**

## DRILL STEM TEST REPORT

Brito Oil Company, Inc.

**2-15S-26W Gove, KS**

8100 E. 22nd St. N Ste. 600-R  
Wichita, KS 67226

**Albin Unit #1-2**

Job Ticket: 64489

**DST#: 2**

ATTN: Robert Hendrix

Test Start: 2019.09.11 @ 03:34:28

### GENERAL INFORMATION:

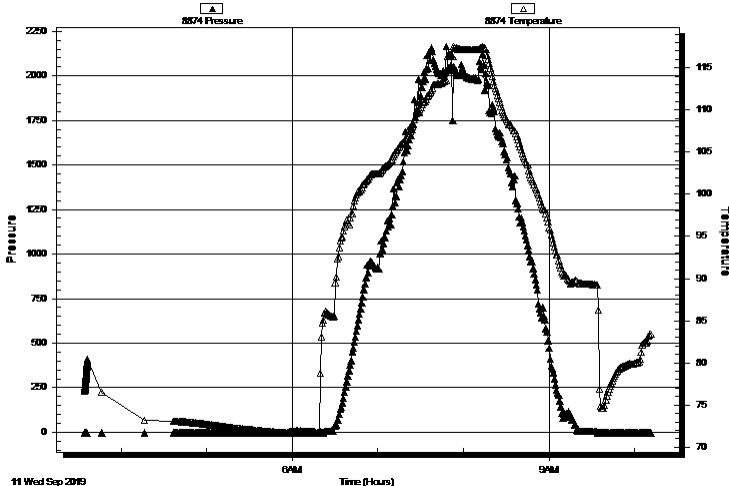
Formation: **Mississippian**  
Deviated: No Whipstock:                      ft (KB)  
Time Tool Opened:  
Time Test Ended: 10:11:58  
Interval: **4170.00 ft (KB) To 4227.00 ft (KB) (TVD)**  
Total Depth: 4227.00 ft (KB) (TVD)  
Hole Diameter: 7.88 inches Hole Condition: Fair  
Test Type: Conventional Bottom Hole (Reset)  
Tester: Brannan Lonsdale  
Unit No: 69  
Reference Elevations: 2307.00 ft (KB)  
2297.00 ft (CF)  
KB to GR/CF: 10.00 ft

**Serial #: 8874      Outside**

Press@RunDepth:                      psig @      4171.00 ft (KB)                      Capacity:                      8000.00 psig  
Start Date:                      2019.09.11                      End Date:                      2019.09.11                      Last Calib.:                      2019.09.11  
Start Time:                      03:34:25                      End Time:                      10:11:45                      Time On Btm:  
Time Off Btm:

TEST COMMENT: PACKER FAILURE

Pressure vs. Time



### PRESSURE SUMMARY

Time (Min.)	Pressure (psig)	Temp (deg F)	Annotation

### Recovery

Length (ft)	Description	Volume (bbl)
130.00	M	1.84

### Gas Rates

	Choke (inches)	Pressure (psig)	Gas Rate (Mcf/d)

\* Recovery from multiple tests



**TRILOBITE  
TESTING, INC.**

# DRILL STEM TEST REPORT

**TOOL DIAGRAM**

Brito Oil Company, Inc.

**2-15S-26W Gove, KS**

8100 E. 22nd St. N Ste. 600-R  
Wichita, KS 67226

**Albin Unit #1-2**

Job Ticket: 64489

**DST#: 2**

ATTN: Robert Hendrix

Test Start: 2019.09.11 @ 03:34:28

## Tool Information

Drill Pipe:	Length: 4181.00 ft	Diameter: 3.82 inches	Volume: 59.27 bbl	Tool Weight: 2000.00 lb
Heavy Wt. Pipe:	Length: ft	Diameter: inches	Volume: - bbl	Weight set on Packer: 25000.00 lb
Drill Collar:	Length: 0.00 ft	Diameter: 2.25 inches	Volume: 0.00 bbl	Weight to Pull Loose: 50000.00 lb
			<u>Total Volume: - bbl</u>	Tool Chased 0.00 ft
Drill Pipe Above KB:	31.00 ft			String Weight: Initial 44000.00 lb
Depth to Top Packer:	4170.00 ft			Final 45000.00 lb
Depth to Bottom Packer:	ft			
Interval between Packers:	57.00 ft			
Tool Length:	77.00 ft			
Number of Packers:	2	Diameter: 6.75 inches		

Tool Comments:

Tool Description	Length (ft)	Serial No.	Position	Depth (ft)	Accum. Lengths
------------------	-------------	------------	----------	------------	----------------

Change Over Sub	1.00			4151.00	
Shut In Tool	5.00			4156.00	
Hydraulic tool	5.00			4161.00	
Packer	5.00			4166.00	20.00 Bottom Of Top Packer
Packer	4.00			4170.00	
Stubb	1.00			4171.00	
Recorder	0.00	6666	Inside	4171.00	
Recorder	0.00	8874	Outside	4171.00	
Perforations	19.00			4190.00	
Change Over Sub	1.00			4191.00	
Drill Pipe	32.00			4223.00	
Change Over Sub	1.00			4224.00	
Bullnose	3.00			4227.00	57.00 Bottom Packers & Anchor

**Total Tool Length: 77.00**



**TRILOBITE  
TESTING, INC.**

# DRILL STEM TEST REPORT

**FLUID SUMMARY**

Brito Oil Company, Inc.

**2-15S-26W Gove, KS**

8100 E. 22nd St. N Ste. 600-R  
Wichita, KS 67226

**Albin Unit #1-2**

Job Ticket: 64489

**DST#: 2**

ATTN: Robert Hendrix

Test Start: 2019.09.11 @ 03:34:28

## Mud and Cushion Information

Mud Type: Gel Chem

Cushion Type:

Oil API:

deg API

Mud Weight: 9.00 lb/gal

Cushion Length:

ft

Water Salinity:

ppm

Viscosity: 56.00 sec/qt

Cushion Volume:

bbbl

Water Loss: 7.98 in<sup>3</sup>

Gas Cushion Type:

Resistivity: ohm.m

Gas Cushion Pressure:

psig

Salinity: 4800.00 ppm

Filter Cake: inches

## Recovery Information

Recovery Table

Length ft	Description	Volume bbl
130.00	M	1.843

Total Length: 130.00 ft

Total Volume: 1.843 bbl

Num Fluid Samples: 0

Num Gas Bombs: 0

Serial #:

Laboratory Name:

Laboratory Location:

Recovery Comments:

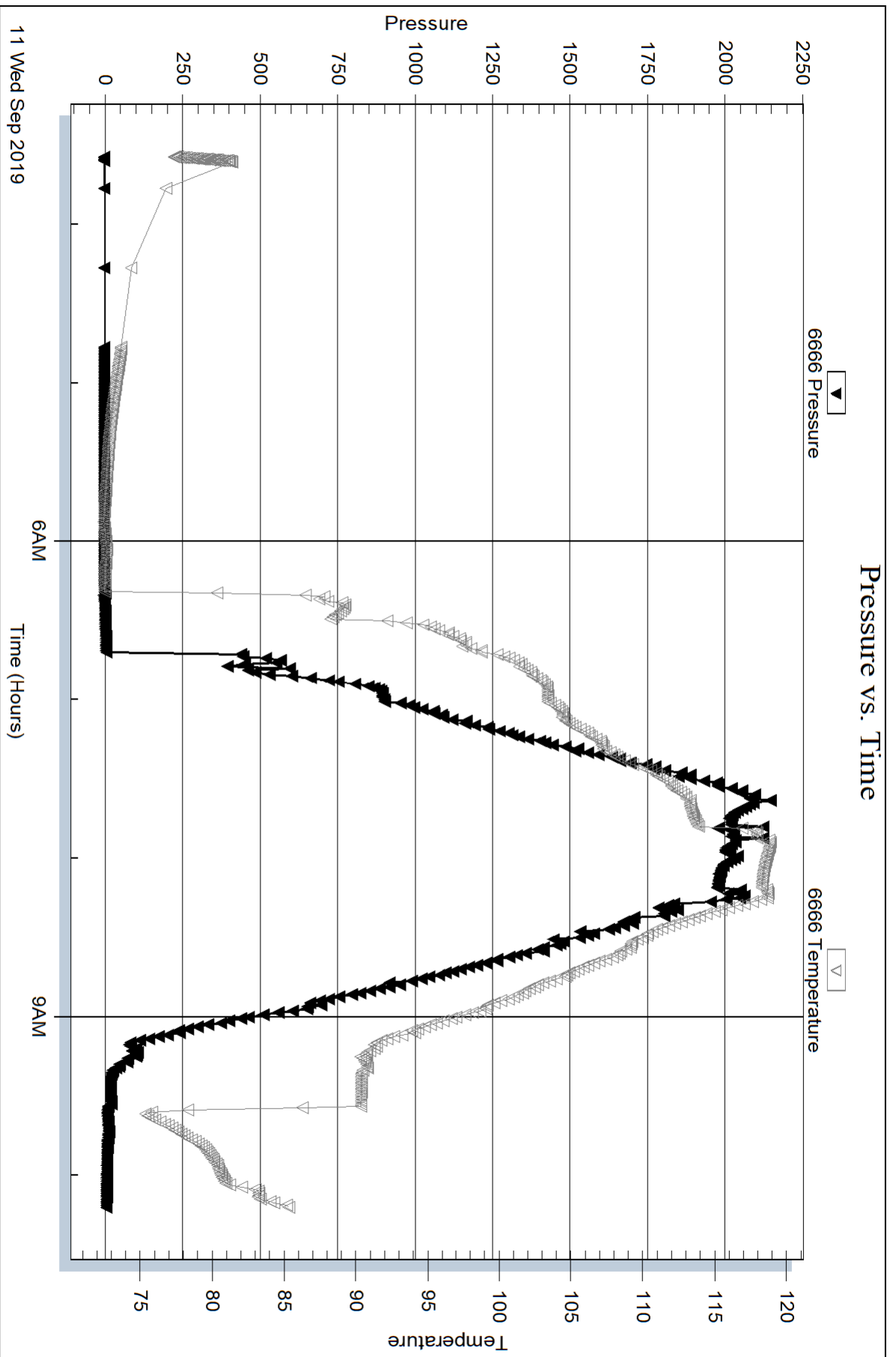
Serial #: 6666

Inside

Brito Oil Company, Inc.

Albin Unit #1-2

DST Test Number: 2



Trilobite Testing, Inc

Ref. No: 64489

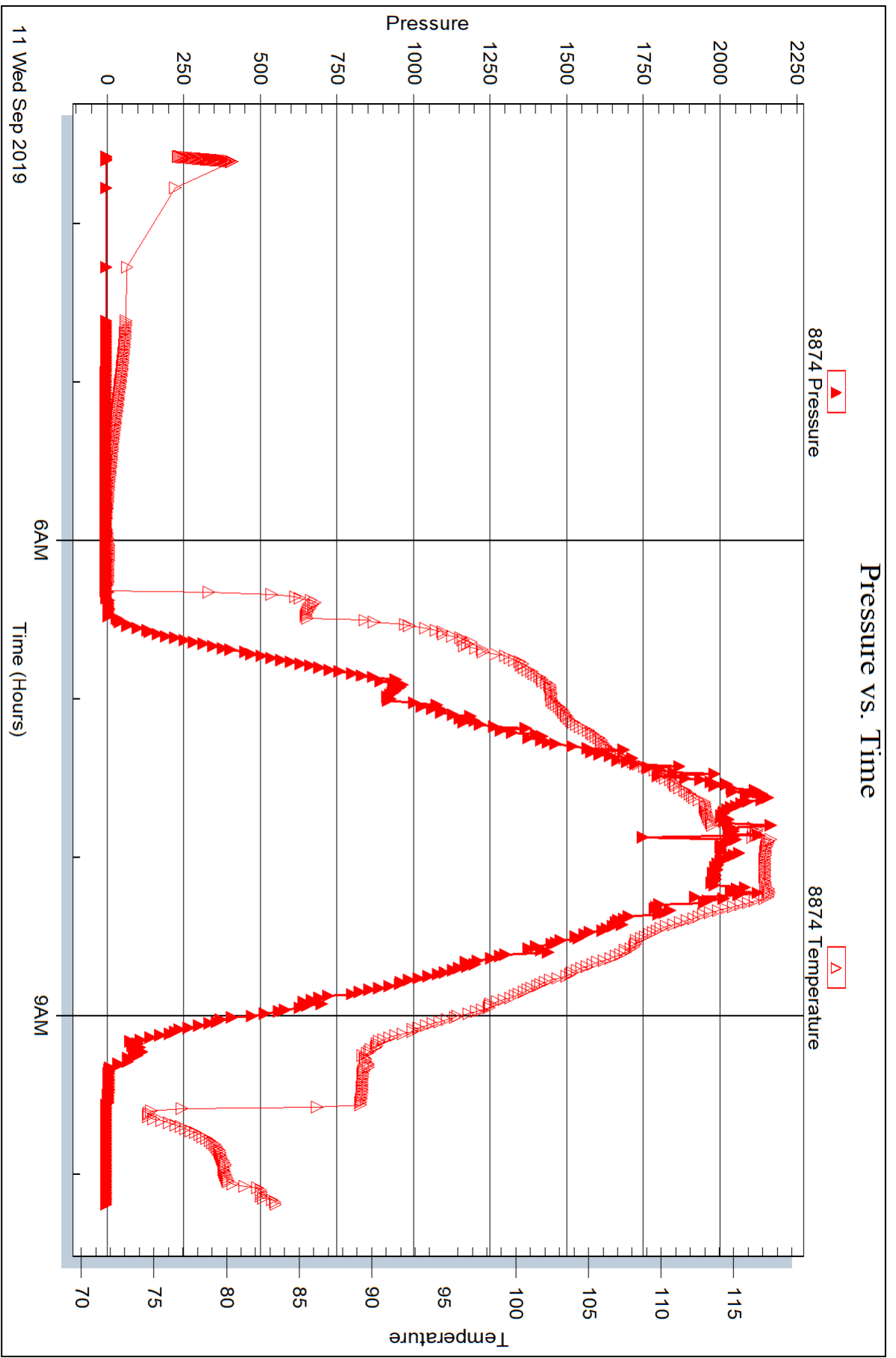
Printed: 2019.09.17 @ 09:56:32

Serial #: 8874

Outside Brito Oil Company, Inc.

Albin Unit #1-2

DST Test Number: 2



Trilobite Testing, Inc

Ref. No: 64489

Printed: 2019.09.17 @ 09:56:32



## DRILL STEM TEST REPORT

Prepared For: **Brito Oil Company, Inc.**

8100 E. 22nd St. N Ste. 600-R  
Wichita, KS 67226

ATTN: Robert Hendrix

### **Albin Unit #1-2**

#### **2-15S-26W Gove,KS**

Start Date: 2019.09.11 @ 10:21:53

End Date: 2019.09.11 @ 16:24:08

Job Ticket #: 64490                      DST #: 3

Trilobite Testing, Inc  
1515 Commerce Parkway Hays, KS 67601  
ph: 785-625-4778 fax: 785-625-5620

Printed: 2019.09.17 @ 09:51:32



**TRILOBITE TESTING, INC.**

# DRILL STEM TEST REPORT

Brito Oil Company, Inc.

**2-15S-26W Gove, KS**

8100 E. 22nd St. N Ste. 600-R  
Wichita, KS 67226

**Albin Unit #1-2**

Job Ticket: 64490

**DST#: 3**

ATTN: Robert Hendrix

Test Start: 2019.09.11 @ 10:21:53

## GENERAL INFORMATION:

Formation: **Mississippian**

Deviated: No Whipstock: ft (KB)

Time Tool Opened: 11:49:53

Time Test Ended: 16:24:08

Test Type: Conventional Bottom Hole (Reset)

Tester: Brannan Lonsdale

Unit No: 69

**Interval: 4158.00 ft (KB) To 4227.00 ft (KB) (TVD)**

Reference Elevations: 2307.00 ft (KB)

Total Depth: 4227.00 ft (KB) (TVD)

2297.00 ft (CF)

Hole Diameter: 7.88 inches Hole Condition: Fair

KB to GR/CF: 10.00 ft

**Serial #: 6666**

**Inside**

Press@RunDepth: 23.37 psig @ 4159.00 ft (KB)

Capacity: 8000.00 psig

Start Date: 2019.09.11

End Date:

2019.09.11

Last Calib.:

2019.09.11

Start Time: 10:21:54

End Time:

16:24:08

Time On Btm:

2019.09.11 @ 11:45:23

Time Off Btm:

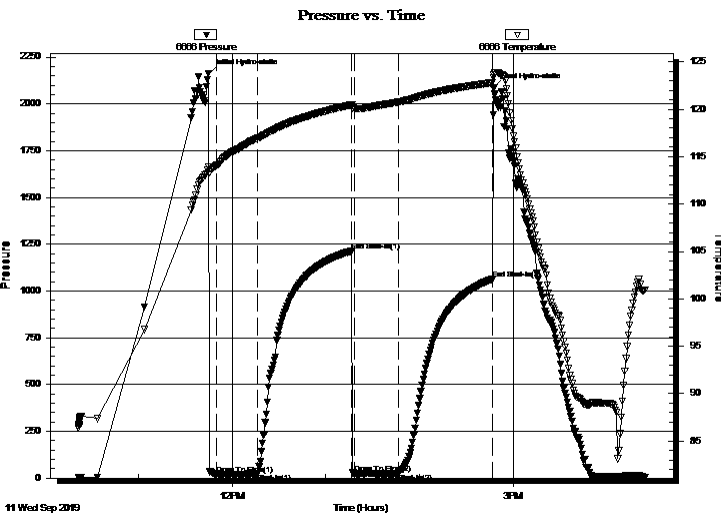
2019.09.11 @ 14:47:38

TEST COMMENT: 30- IF- Slowly built to 0.75"

60- IS- No blow

30- FF- No blow

60- FSI- No blow



## PRESSURE SUMMARY

Time (Min.)	Pressure (psig)	Temp (deg F)	Annotation
0	2163.14	113.94	Initial Hydro-static
5	22.76	114.02	Open To Flow (1)
31	23.62	116.93	Shut-In(1)
92	1214.02	120.46	End Shut-In(1)
93	23.44	120.05	Open To Flow (2)
122	23.37	120.76	Shut-In(2)
181	1063.39	122.78	End Shut-In(2)
183	2084.09	123.61	Final Hydro-static

## Recovery

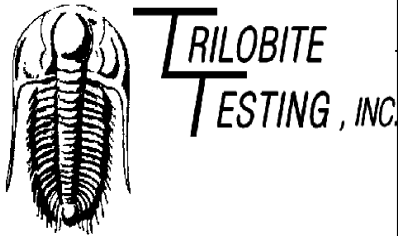
Length (ft)	Description	Volume (bbl)
20.00	M	0.28
2.00	CO	0.03

\* Recovery from multiple tests

## Gas Rates

Choke (inches)	Pressure (psig)	Gas Rate (Mcf/d)





# DRILL STEM TEST REPORT

Brito Oil Company, Inc.  
 8100 E. 22nd St. N Ste. 600-R  
 Wichita, KS 67226  
 ATTN: Robert Hendrix

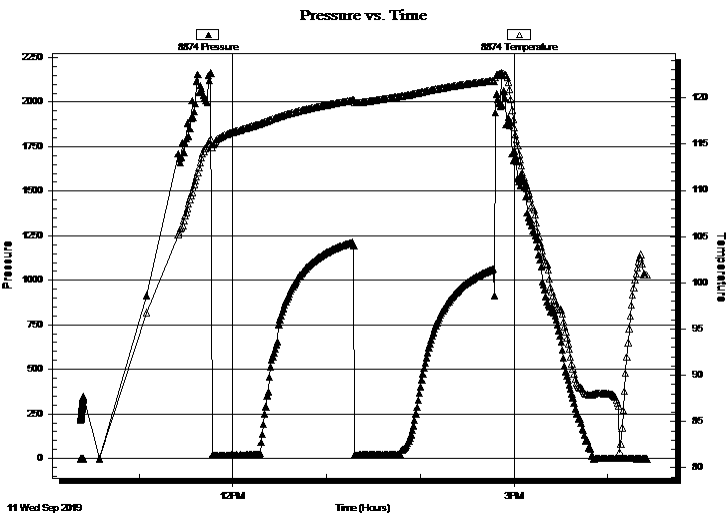
**2-15S-26W Gove, KS**  
**Albin Unit #1-2**  
 Job Ticket: 64490      **DST#: 3**  
 Test Start: 2019.09.11 @ 10:21:53

### GENERAL INFORMATION:

Formation: **Mississippian**  
 Deviated: No Whipstock: ft (KB)      Test Type: Conventional Bottom Hole (Reset)  
 Time Tool Opened: 11:49:53      Tester: Brannan Lonsdale  
 Time Test Ended: 16:24:08      Unit No: 69  
 Interval: **4158.00 ft (KB) To 4227.00 ft (KB) (TVD)**      Reference Elevations: 2307.00 ft (KB)  
 Total Depth: 4227.00 ft (KB) (TVD)      2297.00 ft (CF)  
 Hole Diameter: 7.88 inches Hole Condition: Fair      KB to GR/CF: 10.00 ft

**Serial #: 8874 Outside**  
 Press@RunDepth: psig @ 4159.00 ft (KB)      Capacity: 8000.00 psig  
 Start Date: 2019.09.11      End Date: 2019.09.11      Last Calib.: 2019.09.11  
 Start Time: 10:22:35      End Time: 16:24:55      Time On Btm:  
    Time Off Btm:

TEST COMMENT: 30- IF- Slowly built to 0.75"  
 60- IS- No blow  
 30- FF- No blow  
 60- FS- No blow



### PRESSURE SUMMARY

Time (Min.)	Pressure (psig)	Temp (deg F)	Annotation

### Recovery

Length (ft)	Description	Volume (bbl)
20.00	M	0.28
2.00	CO	0.03

\* Recovery from multiple tests

### Gas Rates

Choke (inches)	Pressure (psig)	Gas Rate (Mcf/d)



**TRILOBITE  
TESTING, INC.**

# DRILL STEM TEST REPORT

**TOOL DIAGRAM**

Brito Oil Company, Inc.

**2-15S-26W Gove, KS**

8100 E. 22nd St. N Ste. 600-R  
Wichita, KS 67226

**Albin Unit #1-2**

Job Ticket: 64490

**DST#: 3**

ATTN: Robert Hendrix

Test Start: 2019.09.11 @ 10:21:53

## Tool Information

Drill Pipe:	Length: 4150.00 ft	Diameter: 3.82 inches	Volume: 58.83 bbl	Tool Weight: 2000.00 lb
Heavy Wt. Pipe:	Length: ft	Diameter: inches	Volume: - bbl	Weight set on Packer: 25000.00 lb
Drill Collar:	Length: 0.00 ft	Diameter: 2.25 inches	Volume: 0.00 bbl	Weight to Pull Loose: 57000.00 lb
			Total Volume: - bbl	Tool Chased 0.00 ft
Drill Pipe Above KB:	12.00 ft			String Weight: Initial 44000.00 lb
Depth to Top Packer:	4158.00 ft			Final 46000.00 lb
Depth to Bottom Packer:	ft			
Interval between Packers:	69.00 ft			
Tool Length:	89.00 ft			
Number of Packers:	2	Diameter: 6.75 inches		

Tool Comments:

Tool Description	Length (ft)	Serial No.	Position	Depth (ft)	Accum. Lengths
------------------	-------------	------------	----------	------------	----------------

Change Over Sub	1.00			4139.00	
Shut In Tool	5.00			4144.00	
Hydraulic tool	5.00			4149.00	
Packer	5.00			4154.00	20.00 Bottom Of Top Packer
Packer	4.00			4158.00	
Stubb	1.00			4159.00	
Recorder	0.00	6666	Inside	4159.00	
Recorder	0.00	8874	Outside	4159.00	
Perforations	1.00			4160.00	
Change Over Sub	1.00			4161.00	
Drill Pipe	62.00			4223.00	
Change Over Sub	1.00			4224.00	
Bullnose	3.00			4227.00	69.00 Bottom Packers & Anchor

**Total Tool Length: 89.00**



**TRILOBITE  
TESTING, INC.**

# DRILL STEM TEST REPORT

**FLUID SUMMARY**

Brito Oil Company, Inc.

**2-15S-26W Gove, KS**

8100 E. 22nd St. N Ste. 600-R  
Wichita, KS 67226

**Albin Unit #1-2**

Job Ticket: 64490

**DST#: 3**

ATTN: Robert Hendrix

Test Start: 2019.09.11 @ 10:21:53

## Mud and Cushion Information

Mud Type: Gel Chem

Cushion Type:

Oil API:

33 deg API

Mud Weight: 9.00 lb/gal

Cushion Length:

ft

Water Salinity:

ppm

Viscosity: 58.00 sec/qt

Cushion Volume:

bbbl

Water Loss: 6.78 in<sup>3</sup>

Gas Cushion Type:

Resistivity: ohm.m

Gas Cushion Pressure:

psig

Salinity: 4600.00 ppm

Filter Cake: inches

## Recovery Information

Recovery Table

Length ft	Description	Volume bbl
20.00	M	0.284
2.00	CO	0.028

Total Length: 22.00 ft      Total Volume: 0.312 bbl

Num Fluid Samples: 0

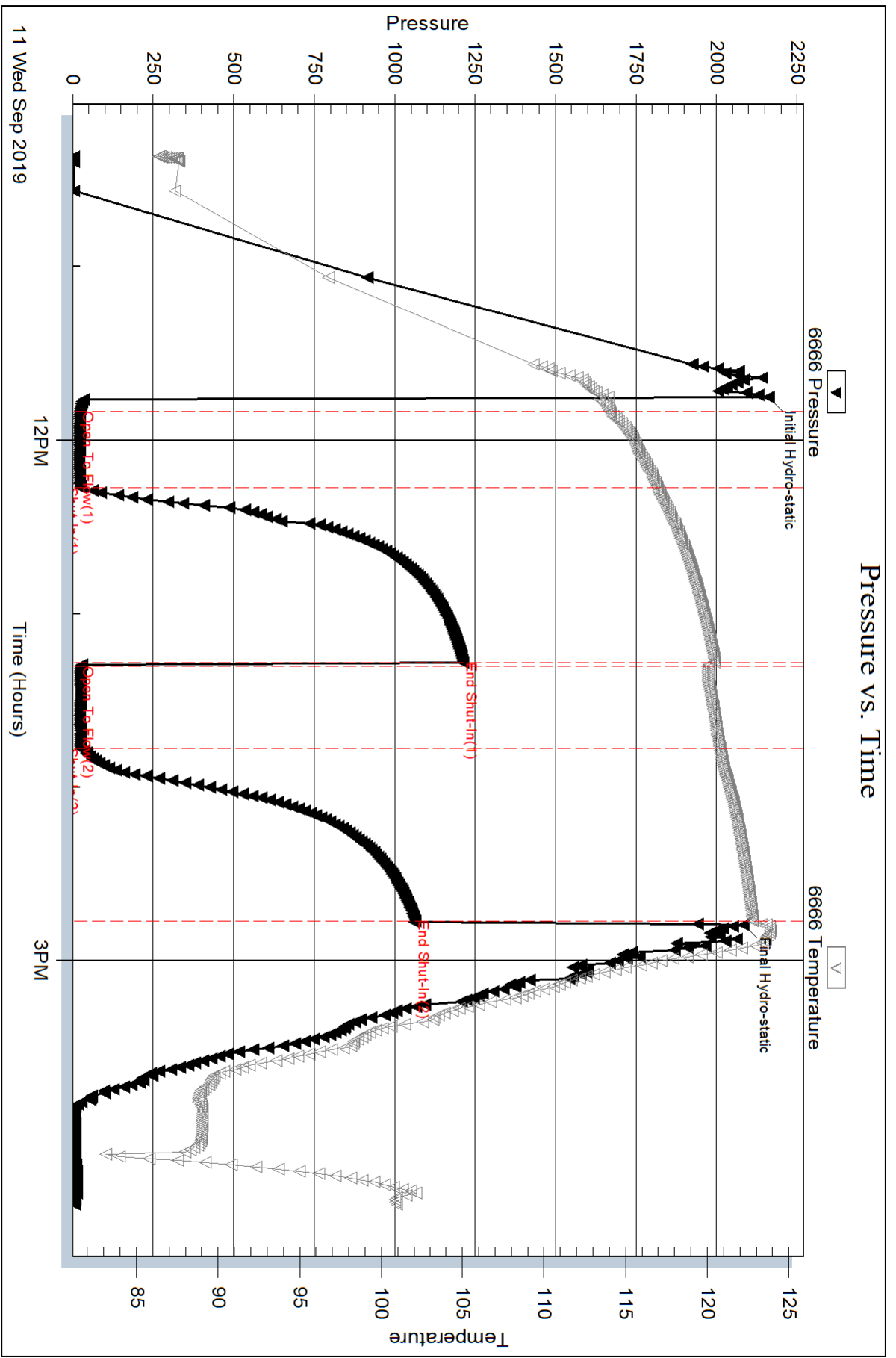
Num Gas Bombs: 0

Serial #:

Laboratory Name:

Laboratory Location:

Recovery Comments:

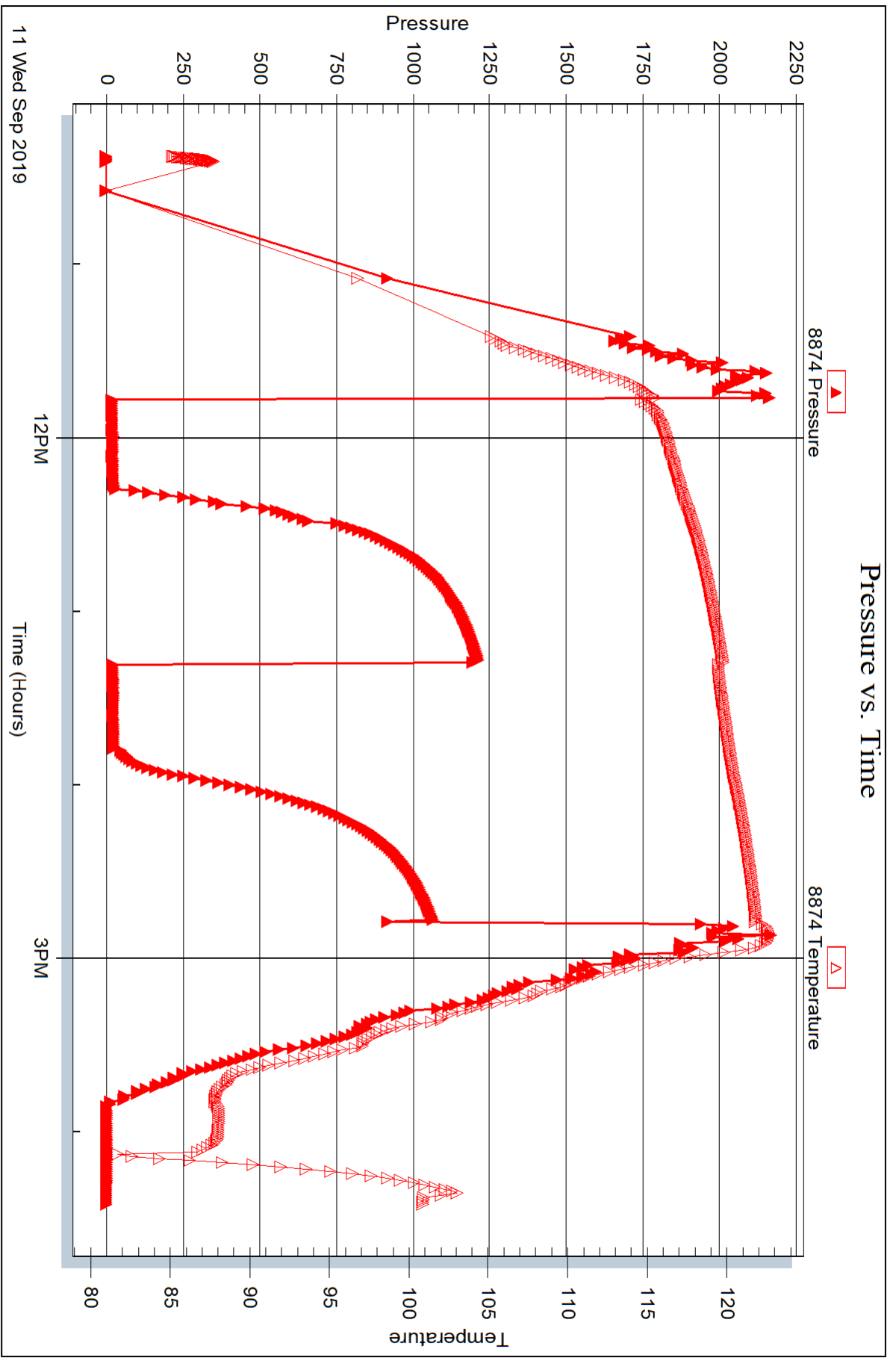


Serial #: 8874

Outside Brito Oil Company, Inc.

Albin Unit #1-2

DST Test Number: 3



Trilobite Testing, Inc

Ref. No: 64490

Printed: 2019.09.17 @ 09:51:33



## DRILL STEM TEST REPORT

Prepared For: **Brito Oil Company, Inc.**

8100 E. 22nd St. N Ste. 600-R  
Wichita, KS 67226

ATTN: Robert Hendrix

### **Albin Unit #1-2**

### **2-15S-26W Gove,KS**

Start Date: 2019.09.11 @ 22:01:57

End Date: 2019.09.12 @ 06:43:12

Job Ticket #: 64491                      DST #: 4

Trilobite Testing, Inc  
1515 Commerce Parkway Hays, KS 67601  
ph: 785-625-4778 fax: 785-625-5620

Printed: 2019.09.17 @ 09:51:05



**TRILOBITE TESTING, INC.**

# DRILL STEM TEST REPORT

Brito Oil Company, Inc.

**2-15S-26W Gove, KS**

8100 E. 22nd St. N Ste. 600-R  
Wichita, KS 67226

**Albin Unit #1-2**

Job Ticket: 64491

**DST#: 4**

ATTN: Robert Hendrix

Test Start: 2019.09.11 @ 22:01:57

## GENERAL INFORMATION:

Formation: **Mississippian**

Deviated: No Whipstock: ft (KB)

Time Tool Opened: 00:08:12

Time Test Ended: 06:43:12

Test Type: Conventional Bottom Hole (Reset)

Tester: Brannan Lonsdale

Unit No: 69

**Interval: 4222.00 ft (KB) To 4237.00 ft (KB) (TVD)**

Reference Elevations: 2307.00 ft (KB)

Total Depth: 4237.00 ft (KB) (TVD)

2297.00 ft (CF)

Hole Diameter: 7.88 inches Hole Condition: Fair

KB to GR/CF: 10.00 ft

**Serial #: 6666**

**Inside**

Press@RunDepth: 102.88 psig @ 4223.00 ft (KB)

Capacity: 8000.00 psig

Start Date: 2019.09.11

End Date:

2019.09.12

Last Calib.:

2019.09.12

Start Time: 22:01:58

End Time:

06:43:12

Time On Btm:

2019.09.12 @ 00:05:42

Time Off Btm:

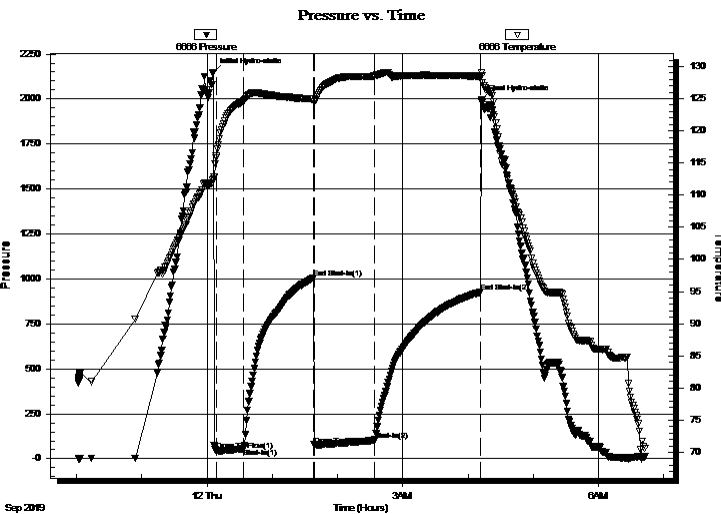
2019.09.12 @ 04:12:42

TEST COMMENT: 30- IF- BOB 11 mins. Built to 14.33"

60- IS- No blow

60- FF- BOB 29 mins. Built to 11.55"

90- FS- No blow



## PRESSURE SUMMARY

Time (Min.)	Pressure (psig)	Temp (deg F)	Annotation
0	2148.22	112.57	Initial Hydro-static
3	46.78	115.81	Open To Flow (1)
28	56.48	124.68	Shut-In(1)
92	1003.35	124.93	End Shut-In(1)
94	74.22	124.54	Open To Flow (2)
149	102.88	128.52	Shut-In(2)
246	927.15	128.47	End Shut-In(2)
247	1998.25	128.58	Final Hydro-static

## Recovery

Length (ft)	Description	Volume (bbl)
60.00	MCO, 20%M 80%O	0.85
190.00	CGO, 30%G 70%O	2.69

\* Recovery from multiple tests

## Gas Rates

	Choke (inches)	Pressure (psig)	Gas Rate (Mcf/d)



**TRILOBITE**  
TESTING, INC.

**DRILL STEM TEST REPORT**

Brito Oil Company, Inc.

**2-15S-26W Gove, KS**

8100 E. 22nd St. N Ste. 600-R  
Wichita, KS 67226

**Albin Unit #1-2**

Job Ticket: 64491

**DST#: 4**

ATTN: Robert Hendrix

Test Start: 2019.09.11 @ 22:01:57

**GENERAL INFORMATION:**

Formation: **Mississippian**  
 Deviated: No Whipstock: ft (KB)  
 Time Tool Opened: 00:08:12  
 Time Test Ended: 06:43:12  
 Interval: **4222.00 ft (KB) To 4237.00 ft (KB) (TVD)**  
 Total Depth: 4237.00 ft (KB) (TVD)  
 Hole Diameter: 7.88 inches Hole Condition: Fair

Test Type: Conventional Bottom Hole (Reset)  
 Tester: Brannan Lonsdale  
 Unit No: 69

Reference Elevations: 2307.00 ft (KB)  
 2297.00 ft (CF)  
 KB to GR/CF: 10.00 ft

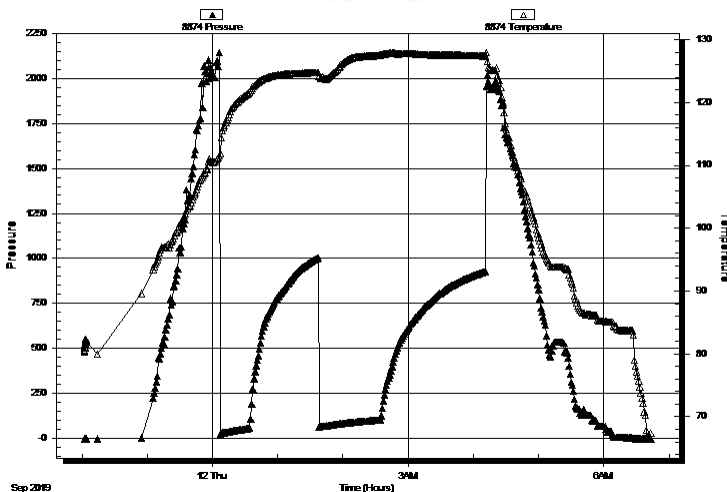
**Serial #: 8874**

**Outside**

Press@RunDepth: psig @ 4223.00 ft (KB) Capacity: 8000.00 psig  
 Start Date: 2019.09.11 End Date: 2019.09.12 Last Calib.: 2019.09.12  
 Start Time: 22:02:20 End Time: 06:43:39 Time On Btm:  
 Time Off Btm:

**TEST COMMENT:** 30- IF- BOB 11 mins. Built to 14.33"  
 60- IS- No blow  
 60- FF- BOB 29 mins. Built to 11.55"  
 90- FS- No blow

Pressure vs. Time



**PRESSURE SUMMARY**

Time (Min.)	Pressure (psig)	Temp (deg F)	Annotation

**Recovery**

Length (ft)	Description	Volume (bbl)
60.00	MCO, 20%M 80%O	0.85
190.00	CGO, 30%G 70%O	2.69

**Gas Rates**

Choke (inches)	Pressure (psig)	Gas Rate (Mcf/d)

\* Recovery from multiple tests





**TRILOBITE  
TESTING, INC.**

# DRILL STEM TEST REPORT

**TOOL DIAGRAM**

Brito Oil Company, Inc.

**2-15S-26W Gove, KS**

8100 E. 22nd St. N Ste. 600-R  
Wichita, KS 67226

**Albin Unit #1-2**

Job Ticket: 64491

**DST#: 4**

ATTN: Robert Hendrix

Test Start: 2019.09.11 @ 22:01:57

## Tool Information

Drill Pipe:	Length: 4213.00 ft	Diameter: 3.82 inches	Volume: 59.72 bbl	Tool Weight: 2000.00 lb
Heavy Wt. Pipe:	Length: ft	Diameter: inches	Volume: - bbl	Weight set on Packer: 25000.00 lb
Drill Collar:	Length: 0.00 ft	Diameter: 2.25 inches	Volume: 0.00 bbl	Weight to Pull Loose: 48000.00 lb
			Total Volume: - bbl	Tool Chased 0.00 ft
Drill Pipe Above KB:	11.00 ft			String Weight: Initial 44000.00 lb
Depth to Top Packer:	4222.00 ft			Final 45000.00 lb
Depth to Bottom Packer:	ft			
Interval between Packers:	15.00 ft			
Tool Length:	35.00 ft			
Number of Packers:	2	Diameter: 6.75 inches		
Tool Comments:				

## Tool Description

Tool Description	Length (ft)	Serial No.	Position	Depth (ft)	Accum. Lengths
Change Over Sub	1.00			4203.00	
Shut In Tool	5.00			4208.00	
Hydraulic tool	5.00			4213.00	
Packer	5.00			4218.00	20.00 Bottom Of Top Packer
Packer	4.00			4222.00	
Stubb	1.00			4223.00	
Recorder	0.00	6666	Inside	4223.00	
Recorder	0.00	8874	Outside	4223.00	
Perforations	11.00			4234.00	
Bullnose	3.00			4237.00	15.00 Bottom Packers & Anchor
<b>Total Tool Length:</b>	<b>35.00</b>				



**TRILOBITE  
TESTING, INC.**

# DRILL STEM TEST REPORT

**FLUID SUMMARY**

Brito Oil Company, Inc.

**2-15S-26W Gove, KS**

8100 E. 22nd St. N Ste. 600-R  
Wichita, KS 67226

**Albin Unit #1-2**

Job Ticket: 64491

**DST#: 4**

ATTN: Robert Hendrix

Test Start: 2019.09.11 @ 22:01:57

## Mud and Cushion Information

Mud Type: Gel Chem

Cushion Type:

Oil API:

35 deg API

Mud Weight: 9.00 lb/gal

Cushion Length:

ft

Water Salinity:

ppm

Viscosity: 58.00 sec/qt

Cushion Volume:

bbbl

Water Loss: 6.79 in<sup>3</sup>

Gas Cushion Type:

Resistivity: ohm.m

Gas Cushion Pressure:

psig

Salinity: 4600.00 ppm

Filter Cake: inches

## Recovery Information

Recovery Table

Length ft	Description	Volume bbl
60.00	MCO, 20%M 80%O	0.851
190.00	CGO, 30%G 70%O	2.693

Total Length: 250.00 ft

Total Volume: 3.544 bbl

Num Fluid Samples: 0

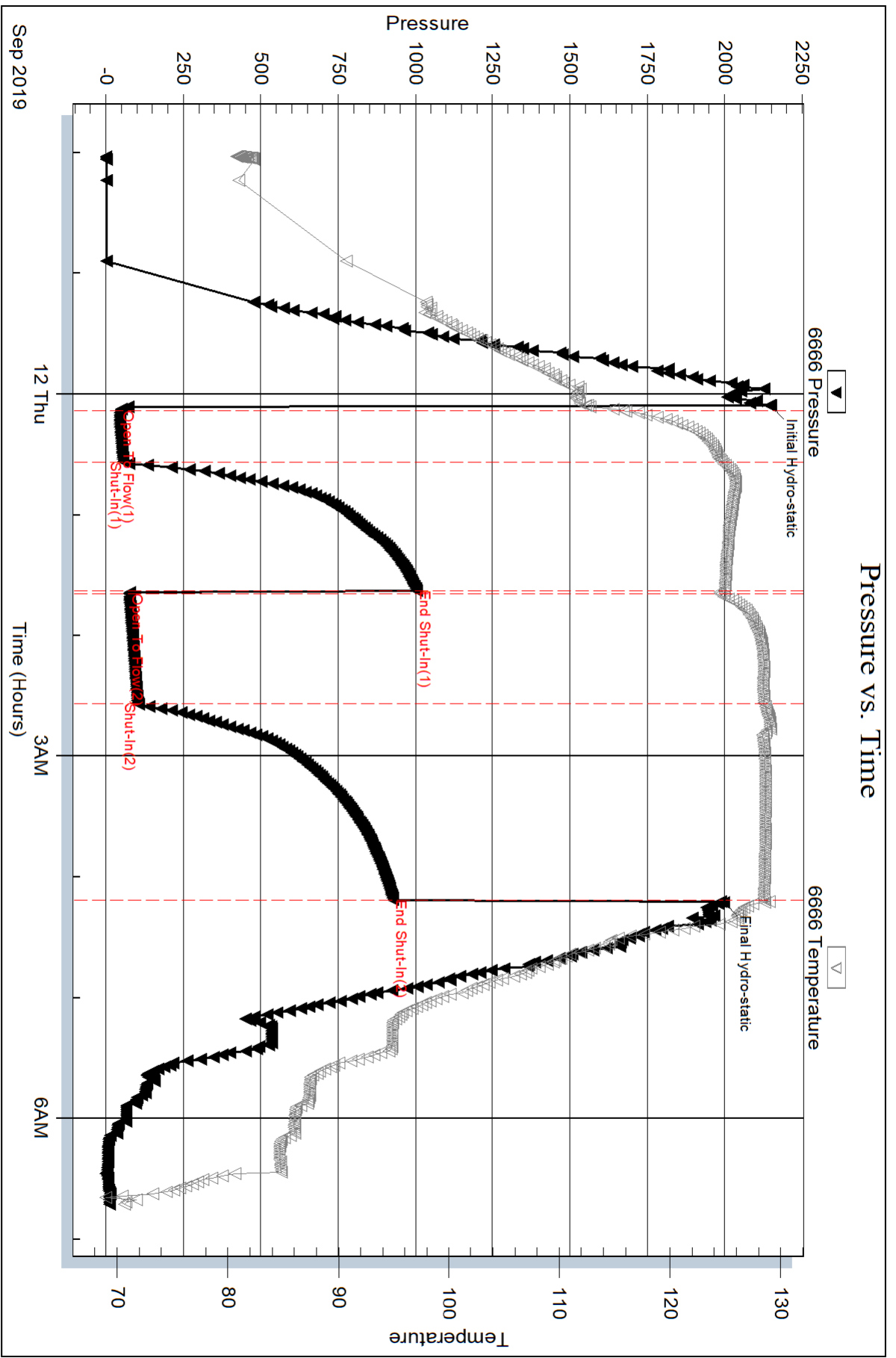
Num Gas Bombs: 0

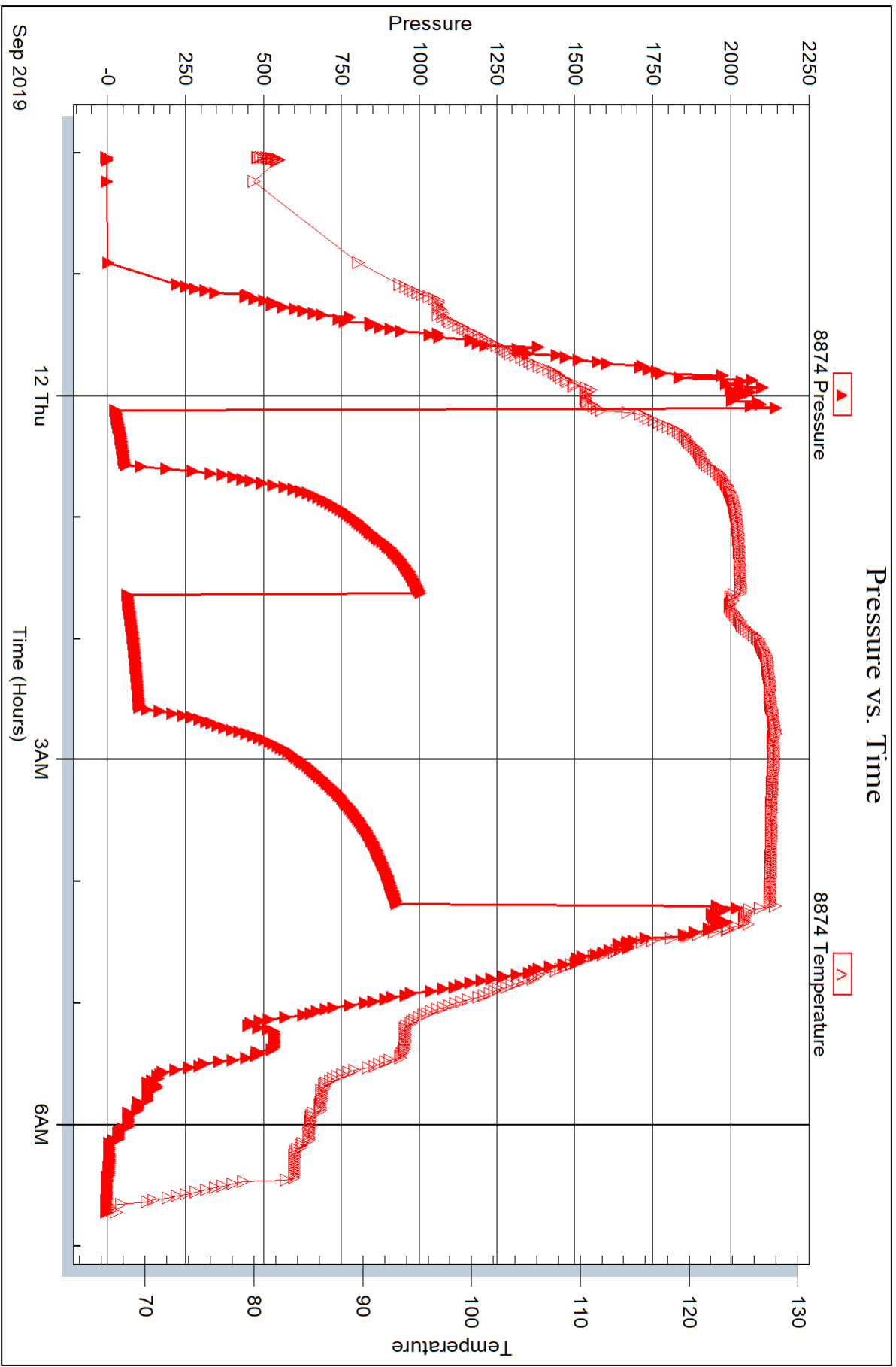
Serial #:

Laboratory Name:

Laboratory Location:

Recovery Comments:







## DRILL STEM TEST REPORT

Prepared For: **Brito Oil Company, Inc.**

8100 E. 22nd St. N Ste. 600-R  
Wichita, KS 67226

ATTN: Robert Hendrix

### **Albin Unit #1-2**

### **2-15S-26W Gove,KS**

Start Date: 2019.09.12 @ 14:40:35

End Date: 2019.09.12 @ 19:38:20

Job Ticket #: 64492                      DST #: 5

Trilobite Testing, Inc  
1515 Commerce Parkway Hays, KS 67601  
ph: 785-625-4778 fax: 785-625-5620

Printed: 2019.09.17 @ 09:49:10



**TRILOBITE TESTING, INC.**

# DRILL STEM TEST REPORT

Brito Oil Company, Inc.

**2-15S-26W Gove, KS**

8100 E. 22nd St. N Ste. 600-R  
Wichita, KS 67226

**Albin Unit #1-2**

Job Ticket: 64492

**DST#: 5**

ATTN: Robert Hendrix

Test Start: 2019.09.12 @ 14:40:35

## GENERAL INFORMATION:

Formation: **Mississippian**

Deviated: No Whipstock: ft (KB)

Time Tool Opened: 16:15:05

Time Test Ended: 19:38:20

Test Type: Conventional Bottom Hole (Reset)

Tester: Brannan Lonsdale

Unit No: 69

**Interval: 4238.00 ft (KB) To 4252.00 ft (KB) (TVD)**

Reference Elevations: 2307.00 ft (KB)

Total Depth: 4252.00 ft (KB) (TVD)

2297.00 ft (CF)

Hole Diameter: 7.88 inches Hole Condition: Fair

KB to GR/CF: 10.00 ft

**Serial #: 6666 Inside**

Press@RunDepth: 19.06 psig @ 4239.00 ft (KB)

Capacity: 8000.00 psig

Start Date: 2019.09.12 End Date: 2019.09.12

Last Calib.: 2019.09.12

Start Time: 14:40:36 End Time: 19:38:20

Time On Btm: 2019.09.12 @ 16:11:50

Time Off Btm: 2019.09.12 @ 18:14:05

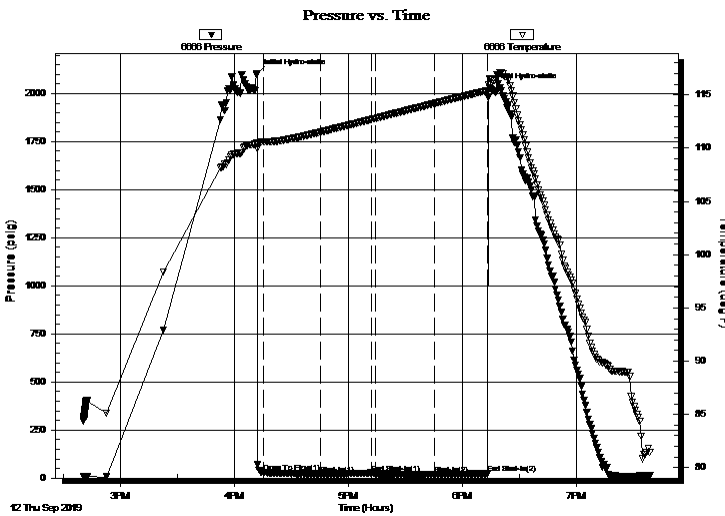
TEST COMMENT: 30- IF- Surface blow died 9mins

30- IS- No blow

30- FF- No blow

30- FSI- No blow

## PRESSURE SUMMARY



Time (Min.)	Pressure (psig)	Temp (deg F)	Annotation
0	2105.20	110.46	Initial Hydro-static
4	29.79	110.61	Open To Flow (1)
34	21.81	111.50	Shut-In(1)
61	27.30	112.70	End Shut-In(1)
62	24.49	112.78	Open To Flow (2)
93	19.06	114.18	Shut-In(2)
121	23.26	115.41	End Shut-In(2)
123	2029.72	116.51	Final Hydro-static

## Recovery

Length (ft)	Description	Volume (bbl)
3.00	M	0.04

## Gas Rates

Choke (inches)	Pressure (psig)	Gas Rate (Mcf/d)

\* Recovery from multiple tests



# TRILOBITE TESTING, INC.

## DRILL STEM TEST REPORT

Brito Oil Company, Inc.  
8100 E. 22nd St. N Ste. 600-R  
Wichita, KS 67226  
ATTN: Robert Hendrix

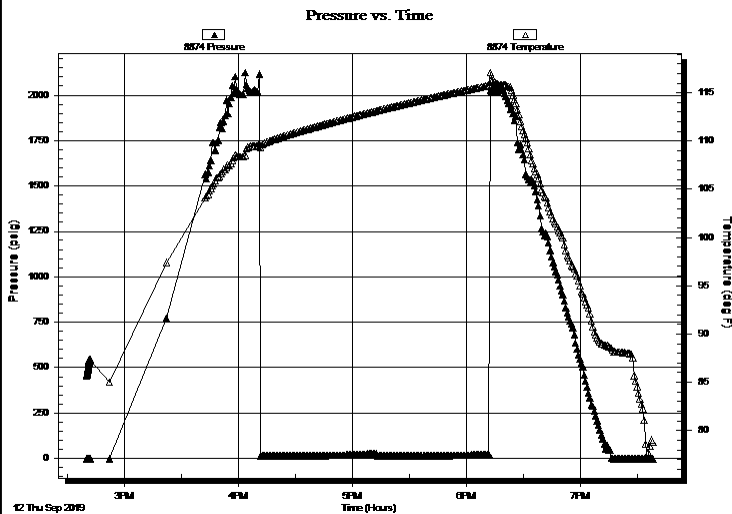
**2-15S-26W Gove, KS**  
**Albin Unit #1-2**  
Job Ticket: 64492      **DST#: 5**  
Test Start: 2019.09.12 @ 14:40:35

### GENERAL INFORMATION:

Formation: **Mississippian**  
Deviated: No      Whipstock:      ft (KB)      Test Type: Conventional Bottom Hole (Reset)  
Time Tool Opened: 16:15:05      Tester: Brannan Lonsdale  
Time Test Ended: 19:38:20      Unit No: 69  
**Interval: 4238.00 ft (KB) To 4252.00 ft (KB) (TVD)**      Reference Elevations: 2307.00 ft (KB)  
Total Depth: 4252.00 ft (KB) (TVD)      2297.00 ft (CF)  
Hole Diameter: 7.88 inches      Hole Condition: Fair      KB to GR/CF: 10.00 ft

**Serial #: 8874      Outside**  
Press@RunDepth:      psig @ 4239.00 ft (KB)      Capacity: 8000.00 psig  
Start Date: 2019.09.12      End Date: 2019.09.12      Last Calib.: 2019.09.12  
Start Time: 14:40:16      End Time: 19:38:06      Time On Btm:  
Time Off Btm:

TEST COMMENT: 30- IF- Surface blow died 9mins  
30- IS- No blow  
30- FF- No blow  
30- FS- No blow



### PRESSURE SUMMARY

Time (Min.)	Pressure (psig)	Temp (deg F)	Annotation

### Recovery

Length (ft)	Description	Volume (bbl)
3.00	M	0.04

### Gas Rates

Choke (inches)	Pressure (psig)	Gas Rate (Mcf/d)

\* Recovery from multiple tests



**TRILOBITE  
TESTING, INC.**

# DRILL STEM TEST REPORT

**TOOL DIAGRAM**

Brito Oil Company, Inc.

**2-15S-26W Gove, KS**

8100 E. 22nd St. N Ste. 600-R  
Wichita, KS 67226

**Albin Unit #1-2**

Job Ticket: 64492

**DST#: 5**

ATTN: Robert Hendrix

Test Start: 2019.09.12 @ 14:40:35

## Tool Information

Drill Pipe:	Length: 4244.00 ft	Diameter: 3.82 inches	Volume: 60.16 bbl	Tool Weight: 2000.00 lb
Heavy Wt. Pipe:	Length: ft	Diameter: inches	Volume: - bbl	Weight set on Packer: 25000.00 lb
Drill Collar:	Length: 0.00 ft	Diameter: 2.25 inches	Volume: 0.00 bbl	Weight to Pull Loose: 62000.00 lb
			<u>Total Volume: - bbl</u>	Tool Chased 0.00 ft
Drill Pipe Above KB:	26.00 ft			String Weight: Initial 44000.00 lb
Depth to Top Packer:	4238.00 ft			Final 44000.00 lb
Depth to Bottom Packer:	ft			
Interval between Packers:	14.00 ft			
Tool Length:	34.00 ft			
Number of Packers:	2	Diameter: 6.75 inches		

Tool Comments:

## Tool Description

Tool Description	Length (ft)	Serial No.	Position	Depth (ft)	Accum. Lengths
Change Over Sub	1.00			4219.00	
Shut In Tool	5.00			4224.00	
Hydraulic tool	5.00			4229.00	
Packer	5.00			4234.00	20.00 Bottom Of Top Packer
Packer	4.00			4238.00	
Stubb	1.00			4239.00	
Recorder	0.00	6666	Inside	4239.00	
Recorder	0.00	8874	Outside	4239.00	
Perforations	10.00			4249.00	
Bullnose	3.00			4252.00	14.00 Bottom Packers & Anchor
<b>Total Tool Length:</b>	<b>34.00</b>				





**TRILOBITE  
TESTING, INC.**

# DRILL STEM TEST REPORT

## FLUID SUMMARY

Brito Oil Company, Inc.

**2-15S-26W Gove, KS**

8100 E. 22nd St. N Ste. 600-R  
Wichita, KS 67226

**Albin Unit #1-2**

Job Ticket: 64492

**DST#: 5**

ATTN: Robert Hendrix

Test Start: 2019.09.12 @ 14:40:35

### Mud and Cushion Information

Mud Type: Gel Chem

Cushion Type:

Oil API:

deg API

Mud Weight: 9.00 lb/gal

Cushion Length:

ft

Water Salinity:

ppm

Viscosity: 59.00 sec/qt

Cushion Volume:

bbbl

Water Loss: 7.79 in<sup>3</sup>

Gas Cushion Type:

Resistivity: ohm.m

Gas Cushion Pressure:

psig

Salinity: 4500.00 ppm

Filter Cake: inches

### Recovery Information

Recovery Table

Length ft	Description	Volume bbl
3.00	M	0.043

Total Length: 3.00 ft      Total Volume: 0.043 bbl

Num Fluid Samples: 0

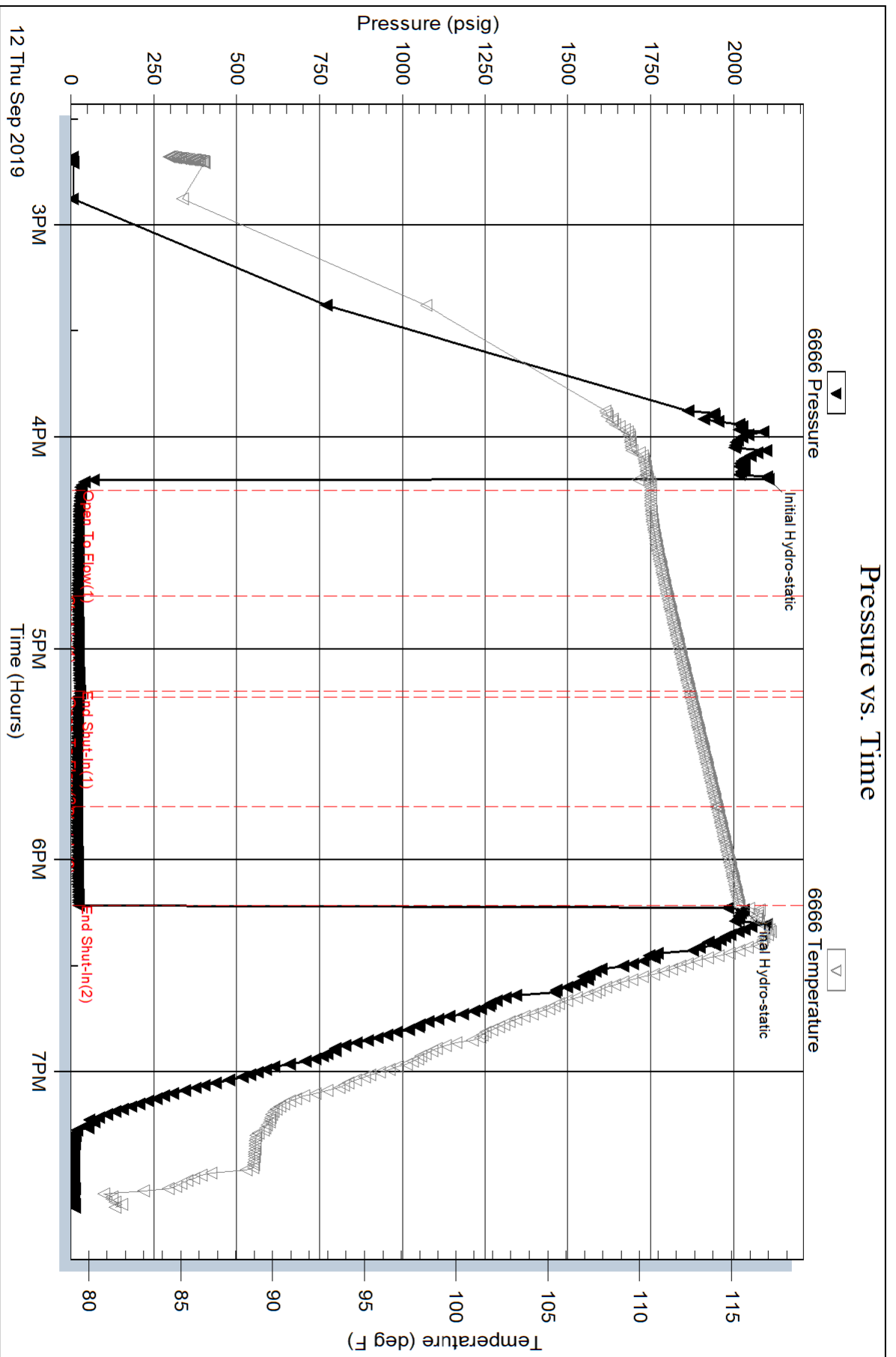
Num Gas Bombs: 0

Serial #:

Laboratory Name:

Laboratory Location:

Recovery Comments:

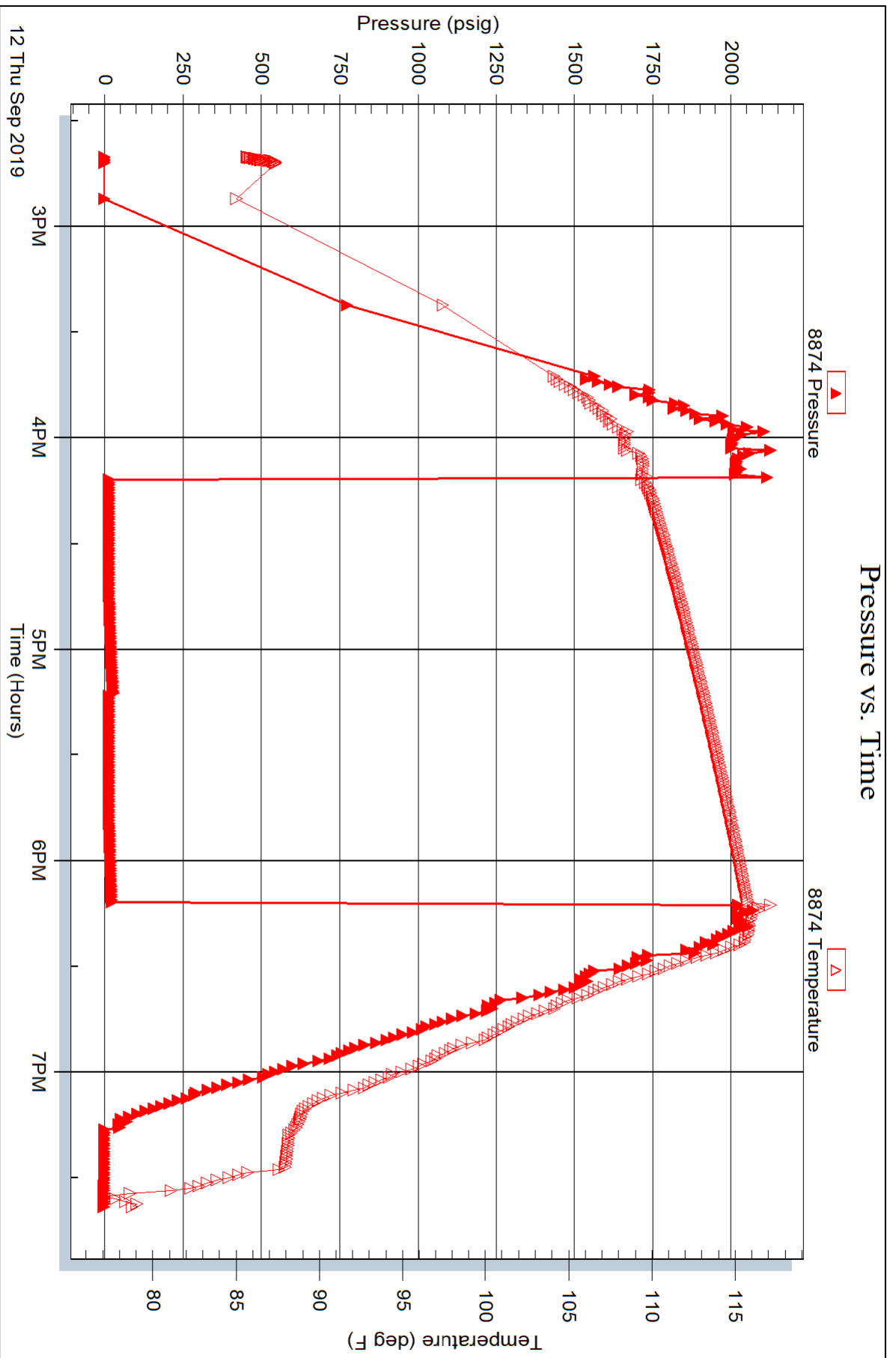


Serial #: 8874

Outside Brito Oil Company, Inc.

Albin Unit #1-2

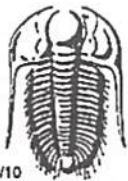
DST Test Number: 5



Triobite Testing, Inc

Ref. No: 64492

Printed: 2019.09.17 @ 09:49:12



# TRILOBITE TESTING INC.

1515 Commerce Parkway • Hays, Kansas 67601

## Test Ticket

NO. 64488

Well Name & No. Albin Unit #1-2 Test No. 1 Date 9/9/19  
 Company Brute Oil Company, Inc. Elevation 2307 KB 2297 GL  
 Address 8100 E. 22nd St. N, Ste. 600-R Wichita, KS 67226  
 Co. Rep / Geo. Robert Hendrix Rig Southwind #1  
 Location: Sec. 2 Twp 15 S Rge. 26 W. Co. Gove State KS

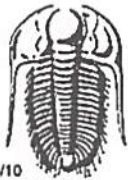
Interval Tested 3759-3847 Zone Tested LKC "H-5"  
 Anchor Length 88' Drill Pipe Run 3770 Mud Wt. 8.9  
 Top Packer Depth 3754 Drill Collars Run — Vis 59  
 Bottom Packer Depth 3759 Wt. Pipe Run — WL 7.2  
 Total Depth 3847 Chlorides 4100 ppm System LCM 2<sup>nd</sup>  
 Blow Description IF - slowly built to 1.50"  
FSI - No blow  
FF - slowly built to 1"  
FSI - No blow

Rec	Feet of	%gas	%oil	%water	%mud
<u>30</u>	<u>HOCMA</u>		<u>40</u>		<u>60</u>
<u>3</u>	<u>CO</u>				

Rec Total 33' BHT 115° Gravity 34 API RW — @ — °F Chlorides — ppm

(A) Initial Hydrostatic <u>1891</u>	<input checked="" type="checkbox"/> Test <u>1200</u>	T-On Location <u>0819</u>
(B) First Initial Flow <u>18</u>	<input type="checkbox"/> Jars <u>—</u>	T-Started <u>0836</u>
(C) First Final Flow <u>32</u>	<input type="checkbox"/> Safety Joint <u>—</u>	T-Open <u>1104</u>
(D) Initial Shut-In <u>270</u>	<input type="checkbox"/> Circ Sub <u>—</u>	T-Pulled <u>1304</u>
(E) Second Initial Flow <u>19</u>	<input type="checkbox"/> Hourly Standby <u>—</u>	T-Out <u>1441</u>
(F) Second Final Flow <u>27</u>	<input checked="" type="checkbox"/> Mileage <u>142 RT</u> 142	Comments <u>—</u>
(G) Final Shut-In <u>361</u>	<input type="checkbox"/> Sampler <u>—</u>	
(H) Final Hydrostatic <u>1789</u>	<input type="checkbox"/> Straddle <u>—</u>	<input type="checkbox"/> Ruined Shale Packer <u>—</u>
	<input type="checkbox"/> Shale Packer <u>—</u>	<input type="checkbox"/> Ruined Packer <u>—</u>
Initial Open <u>30</u>	<input type="checkbox"/> Extra Packer <u>—</u>	<input type="checkbox"/> Extra Copies <u>—</u>
Initial Shut-In <u>30</u>	<input type="checkbox"/> Extra Recorder <u>—</u>	Sub Total <u>0</u>
Final Flow <u>30</u>	<input type="checkbox"/> Day Standby <u>—</u>	Total <u>1342</u>
Final Shut-In <u>30</u>	<input type="checkbox"/> Accessibility <u>—</u>	MP/DST Disc't <u>—</u>
	Sub Total <u>1342</u>	

Approved By \_\_\_\_\_ Our Representative Brannan Lousdale  
 Trilobite Testing Inc. shall not be liable for damaged of any kind of the property or personnel of the one for whom a test is made, or for any loss suffered or sustained, directly or indirectly, through the use of its equipment, or its statements or opinion concerning the results of any test, tools lost or damaged in the hole shall be paid for at cost by the party for whom the test is made.



# TRILOBITE TESTING INC.

1515 Commerce Parkway • Hays, Kansas 67601

## Test Ticket

NO. 64489

Well Name & No. Alban Unit #1-2 Test No. 2 Date 9/11/19  
 Company Barto Oil Company, Inc. Elevation 2307 KB 2297 GL  
 Address 8100 E. 22nd St. N, Ste. 600-R Wichita, KS 67226  
 Co. Rep / Geo. Robert Hendrix Rig Southwind 1  
 Location: Sec. 2 Twp 15 S Rge. 26 W Co. Love State KS

Interval Tested 4170-4227 Zone Tested Mississippian  
 Anchor Length 57' Drill Pipe Run 418' Mud Wt. 9.2  
 Top Packer Depth 4165 Drill Collars Run --- Vis 56  
 Bottom Packer Depth 4170 Wt. Pipe Run --- WL 8.0  
 Total Depth 4227 Chlorides 1,800 ppm System LCM 2#

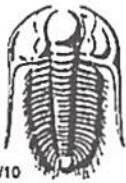
Blow Description PACKER FAILURE

Rec	Feet of	%gas	%oil	%water	%mud
<u>130</u>	<u>M</u>				
Rec	Feet of	%gas	%oil	%water	%mud
Rec	Feet of	%gas	%oil	%water	%mud
Rec	Feet of	%gas	%oil	%water	%mud
Rec	Feet of	%gas	%oil	%water	%mud

Rec Total 130 BHT \_\_\_\_\_ Gravity \_\_\_\_\_ API RW \_\_\_\_\_ @ \_\_\_\_\_ °F Chlorides \_\_\_\_\_ ppm

(A) Initial Hydrostatic \_\_\_\_\_  Test 1050 T-On Location 0317  
 (B) First Initial Flow \_\_\_\_\_  Jars \_\_\_\_\_ T-Started 0334  
 (C) First Final Flow \_\_\_\_\_  Safety Joint \_\_\_\_\_ T-Open 0748  
 (D) Initial Shut-In \_\_\_\_\_  Circ Sub \_\_\_\_\_ T-Pulled 0800  
 (E) Second Initial Flow \_\_\_\_\_  Hourly Standby \_\_\_\_\_ T-Out 1011  
 (F) Second Final Flow \_\_\_\_\_  Mileage 142 RT 142 Comments \_\_\_\_\_  
 (G) Final Shut-In \_\_\_\_\_  Sampler \_\_\_\_\_  
 (H) Final Hydrostatic \_\_\_\_\_  Straddle \_\_\_\_\_  
 Shale Packer \_\_\_\_\_  
 Ruined Shale Packer \_\_\_\_\_  
 Ruined Packer \_\_\_\_\_  
 Extra Packer \_\_\_\_\_  
 Extra Copies \_\_\_\_\_  
 Initial Open \_\_\_\_\_  
 Initial Shut-In \_\_\_\_\_  
 Final Flow \_\_\_\_\_  Day Standby 1.5d .5h Sub Total 16.67  
 Final Shut-In \_\_\_\_\_  Accessibility \_\_\_\_\_ Total 1208.67  
 Sub Total 1192 MP/DST Disc't \_\_\_\_\_

Approved By \_\_\_\_\_ Our Representative Braman Lowdale  
 Trilobite Testing Inc. shall not be liable for damaged of any kind of the property or personnel of the one for whom a test is made, or for any loss suffered or sustained, directly or indirectly, through the use of its equipment, or its statements or opinion concerning the results of any test, tools lost or damaged in the hole shall be paid for at cost by the party for whom the test is made.



# TRILOBITE TESTING INC.

1515 Commerce Parkway • Hays, Kansas 67601

## Test Ticket

NO. 64490

Well Name & No. Albin ~~XXXX~~ Unit #1-2 Test No. 3 Date 9/11/19  
 Company Barto Oil Company, Inc. Elevation 2307 KB 2297 GL  
 Address 8100 E 22<sup>nd</sup> St. N, Ste. 600-R Wichita, KS 67226  
 Co. Rep / Geo. Robert Hendrix Rig Southwind 1  
 Location: Sec. 2 Twp 15 S Rge. 26 W Co. Gove State KS

Interval Tested 4158-4227 Zone Tested Mississippian  
 Anchor Length 69' Drill Pipe Run 14150 Mud Wt. 9.1  
 Top Packer Depth 4153 Drill Collars Run --- Vls 58  
 Bottom Packer Depth 4158 Wt. Pipe Run --- WL 6.8  
 Total Depth 4227 Chlorides 4600 ppm System LCM 2.1

Blow Description IF - Slowly built to 0.75"  
ISI - No blow  
FF - No blow  
BSI - No blow

Rec	Feet of	%gas	%oil	%water	%mud
<u>20</u>	<u>M</u>				
<u>2</u>	<u>CO</u>				

Rec Total 22' BHT 123° Gravity 33 API RW --- @ --- °F Chlorides --- ppm

(A) Initial Hydrostatic <u>2163</u>	<input checked="" type="checkbox"/> Test <u>1300</u>	T-On Location <u>1011</u>
(B) First Initial Flow <u>23</u>	<input type="checkbox"/> Jars <u>---</u>	T-Started <u>1022</u>
(C) First Final Flow <u>24</u>	<input type="checkbox"/> Safety Joint <u>---</u>	T-Open <u>1145</u>
(D) Initial Shut-In <u>1214</u>	<input type="checkbox"/> Circ Sub <u>---</u>	T-Pulled <u>1445</u>
(E) Second Initial Flow <u>23</u>	<input type="checkbox"/> Hourly Standby <u>---</u>	T-Out <u>1624</u>
(F) Second Final Flow <u>23</u>	<input type="checkbox"/> Mileage <u>---</u>	Comments <u>---</u>
(G) Final Shut-In <u>1063</u>	<input type="checkbox"/> Sampler <u>---</u>	
(H) Final Hydrostatic <u>2084</u>	<input type="checkbox"/> Straddle <u>---</u>	

Initial Open 30  Extra Packer ---  Ruined Shale Packer ---  
 Initial Shut-In 60  Extra Recorder ---  Ruined Packer ---  
 Final Flow 30  Day Standby ---  Extra Copies ---  
 Final Shut-In 60  Accessibility --- Sub Total 0  
 Sub Total 1550 Total 1550 MP/DST Disc't ---

Approved By \_\_\_\_\_ Our Representative Brannan Lovisdale

Trilobite Testing Inc. shall not be liable for damaged of any kind of the property or personnel of the one for whom a test is made, or for any loss suffered or sustained, directly or indirectly, through the use of its equipment, or its statements or opinion concerning the results of any test, tools lost or damaged in the hole shall be paid for at cost by the party for whom the test is made.



# TRILOBITE TESTING INC.

1515 Commerce Parkway • Hays, Kansas 67601

## Test Ticket

NO. 64491

Well Name & No. Albin Unit #1-2 Test No. 4 Date 9/11/19  
 Company Brito Oil Company, Inc Elevation 2307 KB 2297 GL  
 Address 8100 E. 22<sup>nd</sup> St. N. Ste. 600-R Wichita KS 67226  
 Co. Rep / Geo. Robert Hendrix Rig Southwind 1  
 Location: Sec. 2 Twp 15 S Rge. 26 W Co. Cove State KS

Interval Tested 4222-4237 Zone Tested Mississippian  
 Anchor Length 15' Drill Pipe Run 4213 Mud Wt. 9.1  
 Top Packer Depth 4217 Drill Collars Run — Vis 58  
 Bottom Packer Depth 4222 Wt. Pipe Run — WL 6.8  
 Total Depth 4237 Chlorides 4,600 ppm System LCM 2#

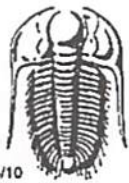
Blow Description IF- BOB 11 mins. Built to 14.33"  
ISF- No blow  
PF- BOB 29 mins. Built to 11.55"  
PSF- No blow

Rec	Feet of	%gas	%oil	%water	%mud
<u>60</u>	<u>MCO</u>	<u>80</u>	<u>—</u>	<u>20</u>	<u>—</u>
<u>190</u>	<u>CGO</u>	<u>30</u>	<u>70</u>	<u>—</u>	<u>—</u>
Rec	Feet of	%gas	%oil	%water	%mud
Rec	Feet of	%gas	%oil	%water	%mud

Rec Total 250' BHT 129' Gravity 35 API RW — @ — °F Chlorides — ppm

(A) Initial Hydrostatic 2148  Test 1300 T-On Location 2145  
 (B) First Initial Flow 47  Jars — T-Started 2202  
 (C) First Final Flow 56  Safety Joint — T-Open 0006  
 (D) Initial Shut-In 1603  Circ Sub — T-Pulled 0406  
 (E) Second Initial Flow 74  Hourly Standby — T-Out 0643  
 (F) Second Final Flow 103  Mileage 142 RT 142 Comments —  
 (G) Final Shut-In 929  Sampler —  
 (H) Final Hydrostatic 1998  Straddle —  
 Shale Packer 250  Ruined Shale Packer —  
 Extra Packer —  Ruined Packer —  
 Extra Recorder —  Extra Copies —  
 Initial Open 30  Day Standby — Sub Total 0  
 Initial Shut-In 60  Accessibility — Total 1692  
 Final Flow 60 Sub Total 1692 MP/DST Disc't —  
 Final Shut-In 90

Approved By \_\_\_\_\_ Our Representative Brannan Lonsdale  
 Trilobite Testing Inc. shall not be liable for damaged of any kind of the property or personnel of the one for whom a test is made, or for any loss suffered or sustained, directly or indirectly, through the use of its equipment, or its statements or opinion concerning the results of any test, tools lost or damaged in the hole shall be paid for at cost by the party for whom the test is made.



# TRILOBITE TESTING INC.

1515 Commerce Parkway • Hays, Kansas 67601

## Test Ticket

NO. **64492**

Well Name & No. Albin Unit #1-2 Test No. 5 Date 9/12/19  
 Company Brito Oil Company, Inc. Elevation 2307 KB 2297 GL  
 Address 8100 E. 22<sup>nd</sup> St. N, Ste. 600-B Wichita, KS 67226  
 Co. Rep / Geo. Robert Hendrix Rig Southwind 1  
 Location: Sec. 2 Twp 15 S Rge. 26 W Co. Cove State KS

Interval Tested 4238-4252 Zone Tested Miss  
 Anchor Length 14' Drill Pipe Run 4244 Mud Wt. 9.1  
 Top Packer Depth 4233 Drill Collars Run --- Vis 59  
 Bottom Packer Depth 4238 Wt. Pipe Run --- WL 7.8  
 Total Depth 4252 Chlorides 4,500 ppm System LCM 1<sup>st</sup>

Blow Description IF- Surface blow died 9 mins  
ISF- No blow  
PF- No blow  
FSP- No blow

Rec	Feet of	%gas	%oil	%water	%mud
<u>3</u>	<u>M</u>				
Rec	Feet of	%gas	%oil	%water	%mud
Rec	Feet of	%gas	%oil	%water	%mud
Rec	Feet of	%gas	%oil	%water	%mud
Rec	Feet of	%gas	%oil	%water	%mud

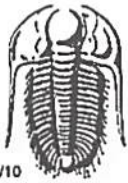
Rec Total 3' BHT 115° Gravity --- API RW --- @ --- °F Chlorides --- ppm

(A) Initial Hydrostatic 2105  Test 1300 T-On Location 1422  
 (B) First Initial Flow 30  Jars --- T-Started 1440  
 (C) First Final Flow 22  Safety Joint --- T-Open 1612  
 (D) Initial Shut-In 27  Circ Sub --- T-Pulled 1812  
 (E) Second Initial Flow 24  Hourly Standby --- T-Out 1938  
 (F) Second Final Flow 19  Mileage 142 RT 142 Comments ---  
 (G) Final Shut-In 23  Sampler ---  
 (H) Final Hydrostatic 2030  Straddle ---  Ruined Shale Packer ---  
 Shale Packer 250  Ruined Packer ---  
 Initial Open 30  Extra Packer ---  Extra Copies ---  
 Initial Shut-In 30  Extra Recorder --- Sub Total 0  
 Final Flow 30  Day Standby --- Total 1692  
 Final Shut-In 30  Accessibility --- MP/DST Disc't ---  
 Sub Total 1692

Approved By \_\_\_\_\_ Our Representative Brannan Lousdale

Trilobite Testing Inc. shall not be liable for damaged of any kind of the property or personnel of the one for whom a test is made, or for any loss suffered or sustained, directly or indirectly, through the use of its equipment, or its statements or opinion concerning the results of any test, tools lost or damaged in the hole shall be paid for at cost by the party for whom the test is made.





# TRILOBITE TESTING INC.

1515 Commerce Parkway • Hays, Kansas 67601

## Test Ticket

NO. 64493

Well Name & No. Albon Unit #1-2 Test No. 6 Date 9/13/19  
 Company Brito Oil Company, Inc. Elevation 2307 KB 2297 GL  
 Address 8100 E. 22<sup>nd</sup> St. N, Ste. 600-B Wichita, KS 67226  
 Co. Rep / Geo. Robert Hendrix Rig Southwind 1  
 Location: Sec. 2 Twp 15 S Rge. 26 W Co. Core State KS

Interval Tested 4125-4164 Zone Tested Ft. Scott  
 Anchor Length 39' Tail 165' Drill Pipe Run 4118 Mud Wt. 9.1  
 Top Packer Depth 4120-4125 Drill Collars Run — Vis 57  
 Bottom Packer Depth 4164 Wt. Pipe Run — WL 7.8  
 Total Depth 4329 Chlorides 4,800 ppm System LCM 1#  
 Blow Description IF - 1/4" blow  
IST - No blow  
FF - No blow Pulled tool  
FST -

Rec	Feet of	%gas	%oil	%water	%mud
<u>10</u>	<u>M</u>				

Rec Total 10' BHT 114° Gravity — API RW — @ — °F Chlorides — ppm  
 (A) Initial Hydrostatic 2126  Test 1300 T-On Location 1142  
 (B) First Initial Flow 14  Jars — T-Started 1236  
 (C) First Final Flow 18  Safety Joint — T-Open 1421  
 (D) Initial Shut-In 833  Circ Sub — T-Pulled 1526  
 (E) Second Initial Flow 16  Hourly Standby — T-Out 1713  
 (F) Second Final Flow 18  Mileage 142 RT 142 Comments —  
 (G) Final Shut-In —  Sampler —  
 (H) Final Hydrostatic 2069  Straddle 600  Ruined Shale Packer —  
 Shale Packer x2 500  Ruined Packer —  
 Initial Open 30  Extra Packer —  Extra Copies —  
 Initial Shut-In 30  Extra Recorder — Sub Total 0  
 Final Flow 5  Day Standby — Total 2542  
 Final Shut-In —  Accessibility — MP/DST Disc't —  
 Sub Total 2542

Approved By \_\_\_\_\_ Our Representative Brannan Lonsdale  
 Trilobite Testing Inc. shall not be liable for damaged of any kind of the property or personnel of the one for whom a test is made, or for any loss suffered or sustained, directly or indirectly, through the use of its equipment, or its statements or opinion concerning the results of any test, tools lost or damaged in the hole shall be paid for at cost by the party for whom the test is made.