

KANSAS CORPORATION COMMISSION
OIL & GAS CONSERVATION DIVISION

TEMPORARY ABANDONMENT WELL APPLICATION

OPERATOR: License#
Name:
Address 1:
Address 2:
City: State: Zip:
Contact Person:
Phone:
Contact Person Email:
Field Contact Person:
Field Contact Person Phone:

API No. 15-
Spot Description:
Sec. Twp. S. R.
GPS Location: Lat, Long
Datum: NAD27, NAD83, WGS84
County: Elevation:
Lease Name: Well #:
Well Type: Oil, Gas, OG, WSW, Other
SWD Permit #: ENHR Permit #:
Gas Storage Permit #:
Spud Date: Date Shut-In:

Table with 7 columns: Conductor, Surface, Production, Intermediate, Liner, Tubing. Rows include Size, Setting Depth, Amount of Cement, Top of Cement, Bottom of Cement.

Casing Fluid Level from Surface: How Determined? Date:
Casing Squeeze(s): to w / sacks of cement, to w / sacks of cement. Date:
Do you have a valid Oil & Gas Lease? Yes No
Depth and Type: Junk in Hole at Tools in Hole at Casing Leaks: Yes No Depth of casing leak(s):
Type Completion: ALT. I ALT. II Depth of: DV Tool: w / sacks of cement Port Collar: w / sack of cement
Packer Type: Size: Inch Set at: Feet
Total Depth: Plug Back Depth: Plug Back Method:

Geological Data:

Table with 4 columns: Formation Name, Formation Top, Formation Base, Completion Information. Rows 1 and 2.

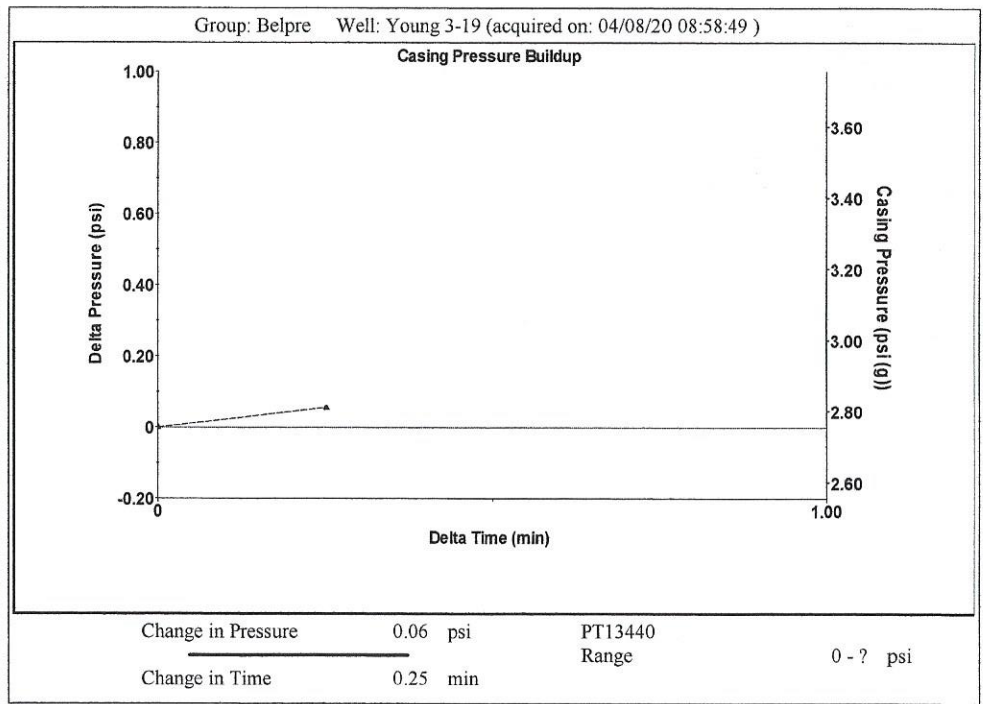
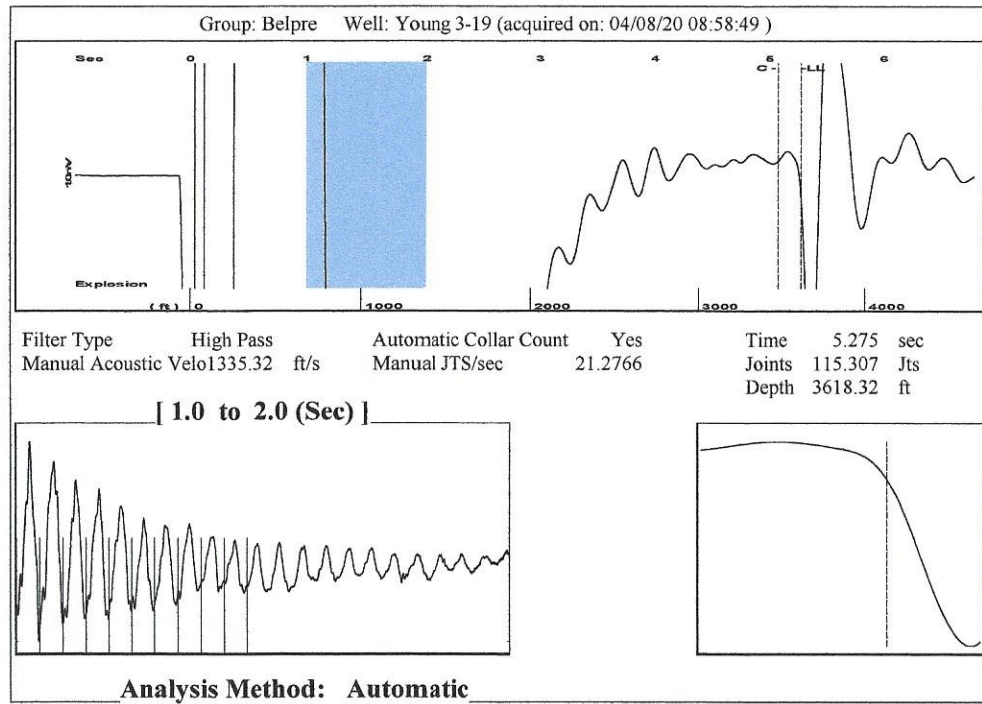
UNDER PENALTY OF PERJURY I HEREBY ATTEST THAT THE INFORMATION CONTAINED HEREIN IS TRUE AND CORRECT TO THE BEST OF MY KNOWLEDGE

Submitted Electronically

Form with fields: Do NOT Write in This Space - KCC USE ONLY, Date Tested, Results, Date Plugged, Date Repaired, Date Put Back in Service, Review Completed by, Comments, TA Approved: Yes Denied, Date.

Mail to the Appropriate KCC Conservation Office:

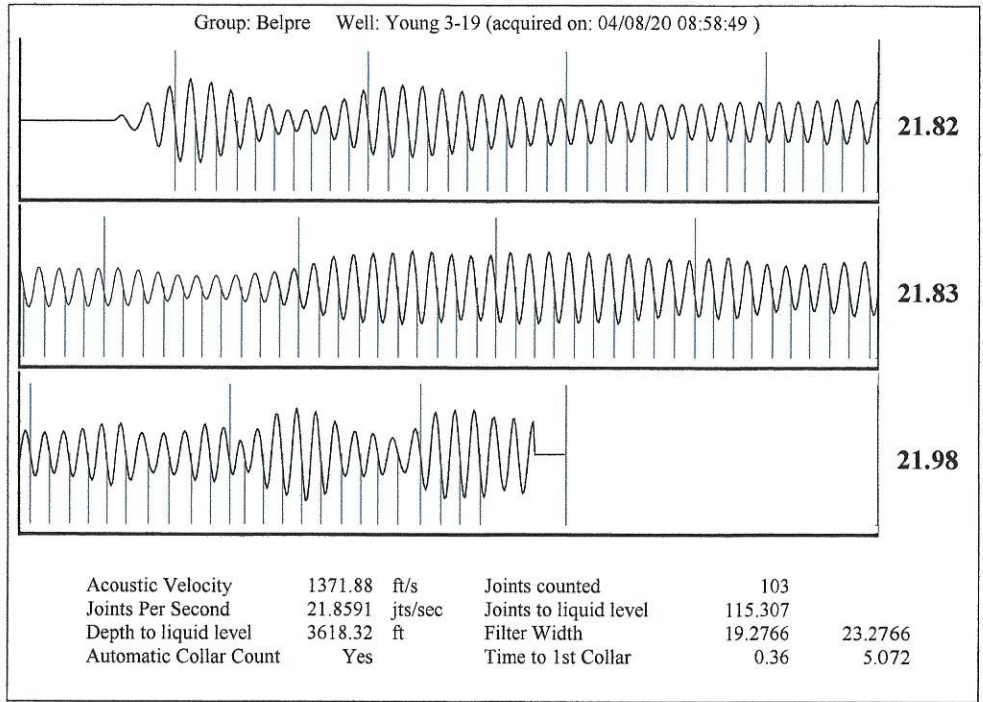
Table with 3 columns: District Office #, Address, Phone. Rows 1-4.



Group: Belpre Well: Young 3-19 (acquired on: 04/08/20 08:58:49)

<b>Production</b>		<b>Casing Pressure</b>	Producing
Current	Potential	2.8 psi (g)	
Oil -*-	-*- BBL/D	Casing Pressure Buildup	Annular
Water -*-	-*- BBL/D	0.1 psi	Gas Flow
Gas -*-	-*- Mscf/D	0.25 min	5 Mscf/D
		Gas/Liquid Interface Pressure	% Liquid
		4.2 psi (g)	75 %
<b>IPR Method</b>	Vogel	Liquid Level Depth	
PBHP/SBHP	-*-	3618.32 ft	
Production Efficiency	0.0	Pump Intake Depth	
		4268.00 ft	
Oil 40 deg.API		Formation Depth	
Water 1.05 Sp.Gr.H2O		4227.00 ft	
Gas 0.64 Sp.Gr.AIR			
Acoustic Velocity	1371.88 ft/s		
Formation Submergence			
Total Gaseous Liquid Column HT (TVD)	650 ft		
Equivalent Gas Free Liquid HT (TVD)	497 ft		
Acoustic Test			

Pump Intake	171.2 psi (g)
Producing BHP	157.6 psi (g)
Static BHP	-*- psi (g)



Susan K. Duffy, Chair  
Shari Feist Albrecht, Commissioner  
Dwight D. Keen, Commissioner

Laura Kelly, Governor

April 14, 2020

Loveness Mpanje  
F. G. Holl Company L.L.C.  
9431 E CENTRAL STE 100  
WICHITA, KS 67206-2563

Re: Temporary Abandonment  
API 15-185-23107-00-00  
YOUNG 3-19  
SW/4 Sec.19-24S-15W  
Stafford County, Kansas

Dear Loveness Mpanje:

"Your temporary abandonment (TA) application for the well listed above has been approved. In accordance with K.A.R. 82-3-111 the TA status of this well will expire 04/14/2021.

- \* If you return this well to service or plug it, please notify the District Office.
- \* If you sell this well you are required to file a Transfer of Operator form, T-1.
- \* If the well will remain temporarily abandoned, you must submit a new TA application, CP-111, before 04/14/2021.

You may contact me at the number above if you have questions.

Very truly yours,

Michael Maier"