



DRILL STEM TEST REPORT

Prepared For: **Val Energy Inc**

125 N Market St STE 1110
Wichita, KS 67202

ATTN: Tim Priest

Wright Farms #1-2

2-8S.-37W Sherman,KS

Start Date: 2018.07.11 @ 02:16:00

End Date: 2018.07.11 @ 08:28:50

Job Ticket #: 64186 DST #: 1

Trilobite Testing, Inc
1515 Commerce Parkway Hays, KS 67601
ph: 785-625-4778 fax: 785-625-5620

Printed: 2018.07.16 @ 16:07:17

Val Energy Inc
2-8S.-37W Sherman,KS
Wright Farms #1-2
DST # 1
LKC B - C
2018.07.11



**TRILOBITE
TESTING, INC.**

DRILL STEM TEST REPORT

Val Energy Inc
125 N Market St STE 1110
Wichita, KS 67202
ATTN: Tim Priest

2-8S.-37W Sherman,KS
Wright Farms #1-2
Job Ticket: 64186 **DST#: 1**
Test Start: 2018.07.11 @ 02:16:00

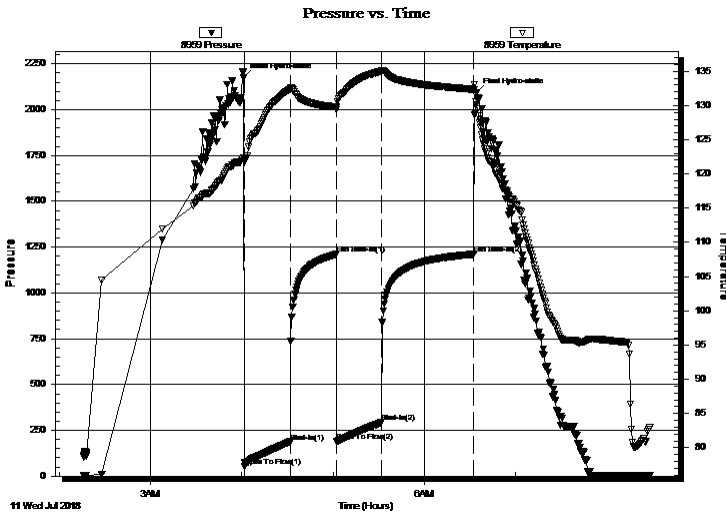
GENERAL INFORMATION:

Formation: **LKC B - C**
Deviated: No Whipstock: ft (KB)
Time Tool Opened: 04:01:50
Time Test Ended: 08:28:50
Interval: **4262.00 ft (KB) To 4320.00 ft (KB) (TVD)**
Total Depth: 4320.00 ft (KB) (TVD)
Hole Diameter: 7.88 inches Hole Condition: Good
Test Type: Conventional Bottom Hole (Initial)
Tester: Martine Salinas
Unit No: 82
Reference Elevations: 3457.00 ft (KB)
3452.00 ft (CF)
KB to GR/CF: 5.00 ft

Serial #: 8959 **Inside**
Press@RunDepth: 292.93 psig @ 4263.00 ft (KB) Capacity: 8000.00 psig
Start Date: 2018.07.11 End Date: 2018.07.11 Last Calib.: 2018.07.11
Start Time: 02:16:01 End Time: 08:28:50 Time On Btm: 2018.07.11 @ 04:01:10
Time Off Btm: 2018.07.11 @ 06:34:09

TEST COMMENT: 30-IF- B.O.B.(12 inches) @ 13 mins (blow increased to 24 1/2")
30-ISI-No blow (blow decreased to 23 1/2")
30-FF-BOB (12 inches) @ 18 mins (blow increased to 19 3/4")
60-FSI-No blow (blow decreased to 18 1/2")

PRESSURE SUMMARY



Time (Min.)	Pressure (psig)	Temp (deg F)	Annotation
0	2172.76	122.36	Initial Hydro-static
1	51.47	121.70	Open To Flow (1)
31	187.36	132.37	Shut-In(1)
61	1211.13	129.77	End Shut-In(1)
62	190.16	129.35	Open To Flow (2)
91	292.93	135.00	Shut-In(2)
152	1211.52	132.37	End Shut-In(2)
153	2091.86	130.49	Final Hydro-static

Recovery

Length (ft)	Description	Volume (bbl)
567.00	MCW 19%M, 81%W	6.84
0.00	Oil spots in tool	0.00

Gas Rates

Choke (inches)	Pressure (psig)	Gas Rate (Mcf/d)



**TRILOBITE
TESTING, INC.**

DRILL STEM TEST REPORT

TOOL DIAGRAM

Val Energy Inc
125 N Market St STE 1110
Wichita, KS 67202
ATTN: Tim Priest

2-8S.-37W Sherman,KS
Wright Farms #1-2
Job Ticket: 64186 **DST#: 1**
Test Start: 2018.07.11 @ 02:16:00

Tool Information

Drill Pipe:	Length: 4127.00 ft	Diameter: 3.80 inches	Volume: 57.89 bbl	Tool Weight: 2000.00 lb
Heavy Wt. Pipe:	Length: 0.00 ft	Diameter: 2.75 inches	Volume: 0.00 bbl	Weight set on Packer: 20000.00 lb
Drill Collar:	Length: 122.00 ft	Diameter: 2.25 inches	Volume: 0.60 bbl	Weight to Pull Loose: 70000.00 lb
			<u>Total Volume: 58.49 bbl</u>	Tool Chased 0.00 ft
Drill Pipe Above KB:	7.00 ft			String Weight: Initial 64000.00 lb
Depth to Top Packer:	4262.00 ft			Final 66000.00 lb
Depth to Bottom Packer:	ft			
Interval between Packers:	58.00 ft			
Tool Length:	78.00 ft			
Number of Packers:	2	Diameter: 6.75 inches		

Tool Comments:

Tool Description	Length (ft)	Serial No.	Position	Depth (ft)	Accum. Lengths
------------------	-------------	------------	----------	------------	----------------

shut In Tool	5.00			4247.00	
hydraulic tool	5.00			4252.00	
Packer	5.00			4257.00	20.00 Bottom Of Top Packer
Packer	5.00			4262.00	
Packer - Shale	0.00			4262.00	
stubb	1.00			4263.00	
Recorder	0.00	8959	Inside	4263.00	
Recorder	0.00	8734	Outside	4263.00	
Perforations	18.00			4281.00	
change Over Sub	1.00			4282.00	
blank spacing	32.00			4314.00	
change Over Sub	1.00			4315.00	
Bullnose	5.00			4320.00	58.00 Bottom Packers & Anchor

Total Tool Length: 78.00



**TRILOBITE
TESTING, INC.**

DRILL STEM TEST REPORT

FLUID SUMMARY

Val Energy Inc

2-8S.-37W Sherman,KS

125 N Market St STE 1110
Wichita, KS 67202

Wright Farms #1-2

Job Ticket: 64186

DST#: 1

ATTN: Tim Priest

Test Start: 2018.07.11 @ 02:16:00

Mud and Cushion Information

Mud Type: Gel Chem

Cushion Type:

Oil API:

deg API

Mud Weight: 9.00 lb/gal

Cushion Length:

ft

Water Salinity:

80000 ppm

Viscosity: 55.00 sec/qt

Cushion Volume:

bbbl

Water Loss: 7.16 in³

Gas Cushion Type:

Resistivity: ohm.m

Gas Cushion Pressure:

psig

Salinity: 3000.00 ppm

Filter Cake: 1.00 inches

Recovery Information

Recovery Table

Length ft	Description	Volume bbl
567.00	MCW 19%M, 81%W	6.842
0.00	Oil spots in tool	0.000

Total Length: 567.00 ft Total Volume: 6.842 bbl

Num Fluid Samples: 0

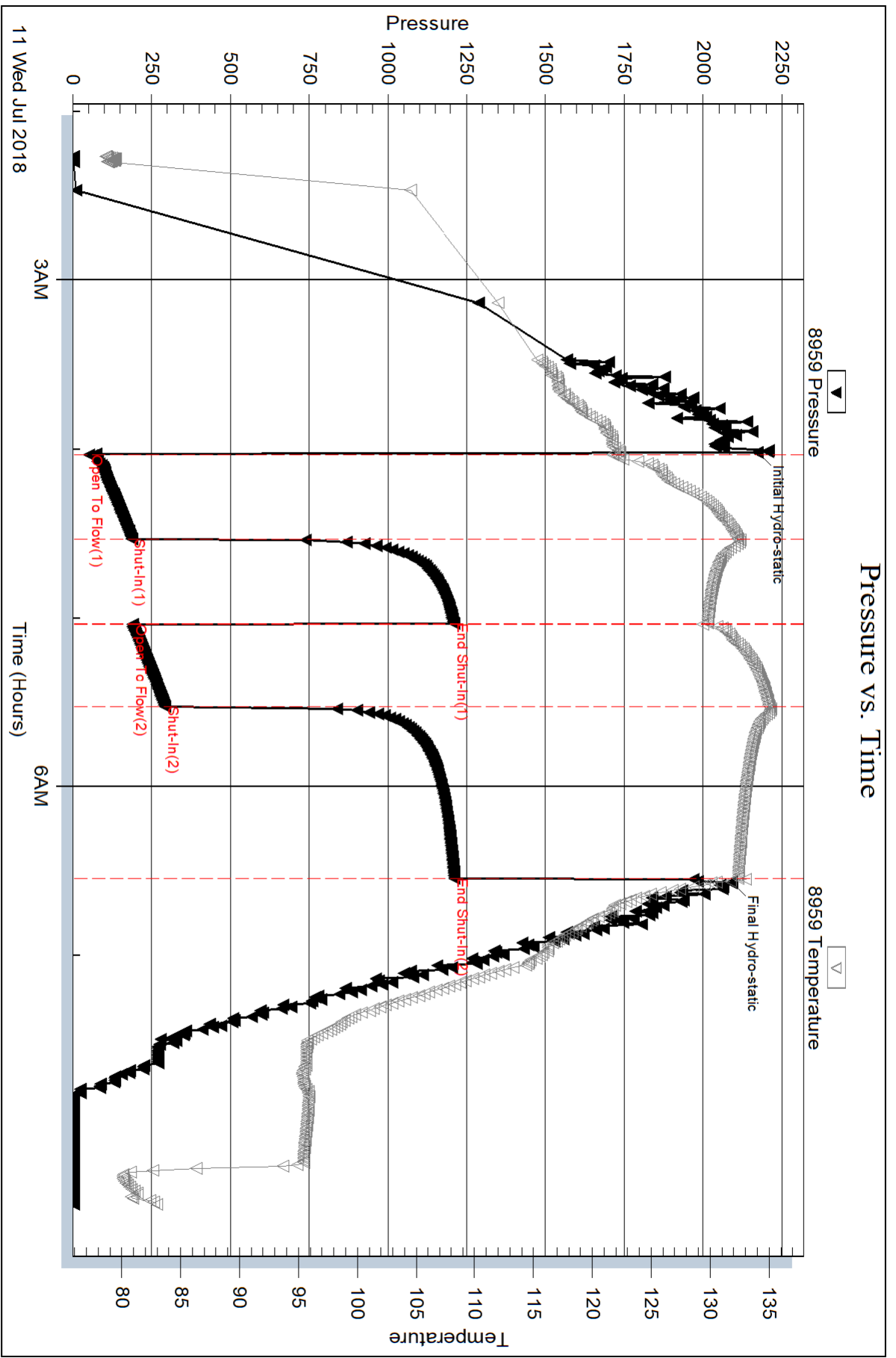
Num Gas Bombs: 0

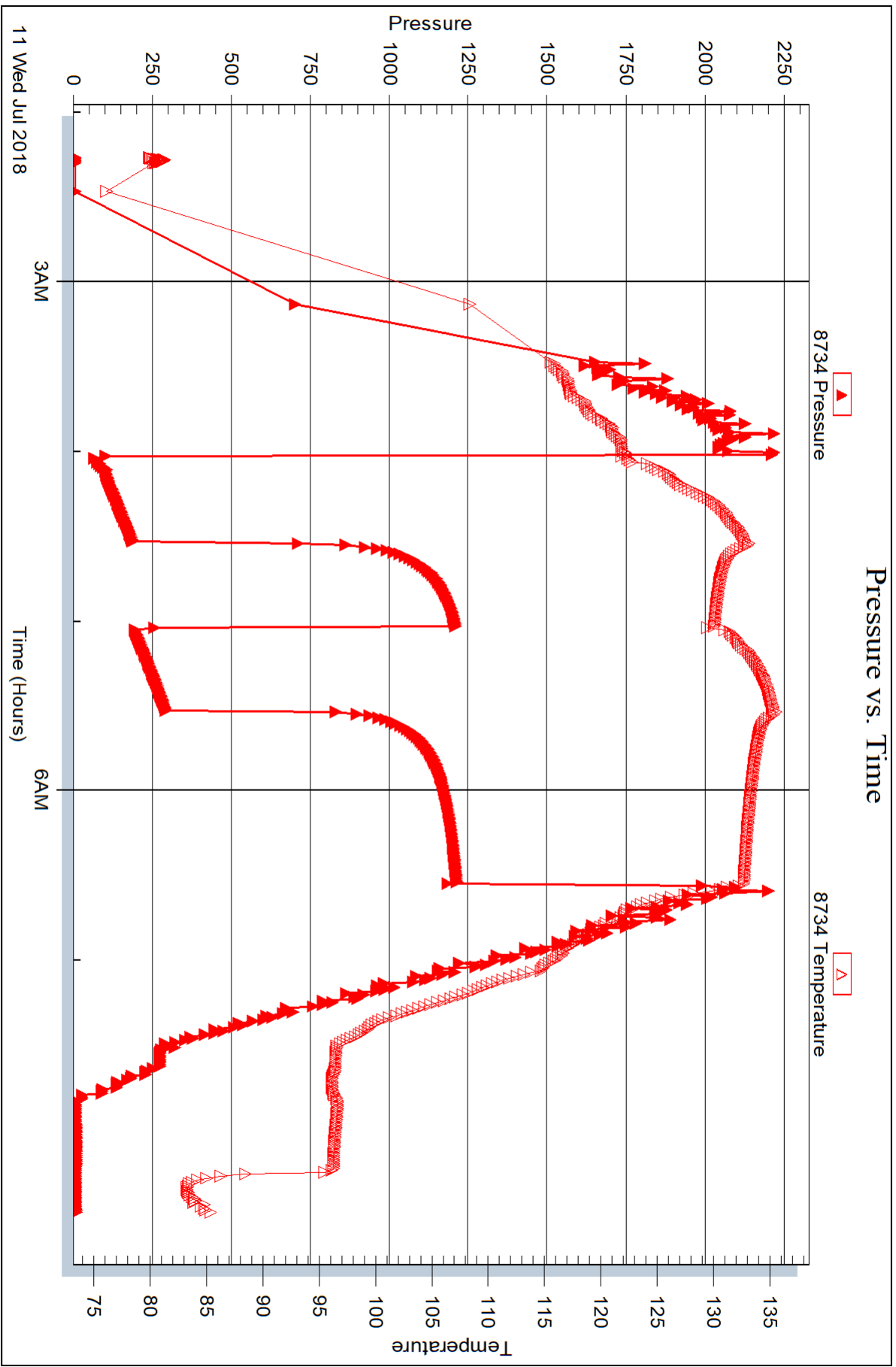
Serial #:

Laboratory Name:

Laboratory Location:

Recovery Comments: RW= .085 @ 84.2 degs = 80,000 PPM







DRILL STEM TEST REPORT

Prepared For: **Val Energy INC**

125 N Market St STE 1110
Wichita, KS 67202

ATTN: Tim Priest

Wright Farms #1-2

2-8S.-37W Sherman,KS

Start Date: 2018.07.12 @ 04:01:00

End Date: 2018.07.12 @ 09:59:09

Job Ticket #: 64187 DST #: 2

Trilobite Testing, Inc
1515 Commerce Parkway Hays, KS 67601
ph: 785-625-4778 fax: 785-625-5620

Printed: 2018.07.16 @ 16:04:41

Val Energy INC
2-8S.-37W Sherman,KS
Wright Farms #1-2
DST # 2
LKC " H - K "
2018.07.12



TRILOBITE TESTING, INC.

DRILL STEM TEST REPORT

Val Energy INC
 125 N Market St STE 1110
 Wichita, KS 67202
 ATTN: Tim Priest

2-8S.-37W Sherman,KS
Wright Farms #1-2
 Job Ticket: 64187 **DST#: 2**
 Test Start: 2018.07.12 @ 04:01:00

GENERAL INFORMATION:

Formation: **LKC "H - K"**
 Deviated: No Whipstock: ft (KB)
 Time Tool Opened: 05:44:50
 Time Test Ended: 09:59:09
 Interval: **4374.00 ft (KB) To 4490.00 ft (KB) (TVD)**
 Total Depth: 4490.00 ft (KB) (TVD)
 Hole Diameter: 7.88 inches Hole Condition: Good
 Test Type: Conventional Bottom Hole (Reset)
 Tester: Martine Salinas
 Unit No: 82
 Reference Elevations: 3457.00 ft (KB)
 3452.00 ft (CF)
 KB to GR/CF: 5.00 ft

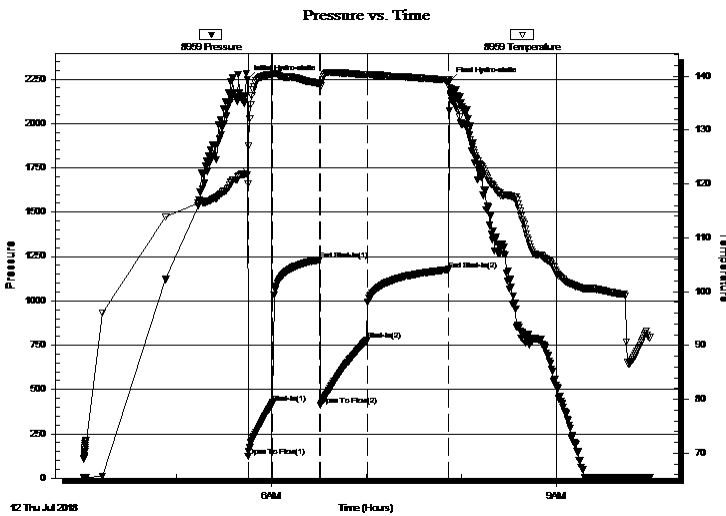
Serial #: 8959

Inside

Press@RunDepth: 777.16 psig @ 4375.00 ft (KB) Capacity: 8000.00 psig
 Start Date: 2018.07.12 End Date: 2018.07.12 Last Calib.: 2018.07.12
 Start Time: 04:01:01 End Time: 09:59:10 Time On Btm: 2018.07.12 @ 05:44:40
 Time Off Btm: 2018.07.12 @ 07:52:20

TEST COMMENT: 15-IF-BOB (12 inches) @ 3 mins (blow increased to 63")
 30-ISI-No blow (blow decreased to 60 1/2")
 30-FF- BOB (12 inches) @ 1 min (blow increased to 127 1/2")
 45-FSI-No blow (blow decreased to 120 3/4")

PRESSURE SUMMARY



Time (Min.)	Pressure (psig)	Temp (deg F)	Annotation
0	2247.99	121.65	Initial Hydro-static
1	124.45	120.00	Open To Flow (1)
16	425.20	140.34	Shut-In(1)
46	1231.20	138.59	End Shut-In(1)
46	411.06	138.38	Open To Flow (2)
76	777.16	140.23	Shut-In(2)
127	1175.60	139.25	End Shut-In(2)
128	2236.34	137.84	Final Hydro-static

Recovery

Length (ft)	Description	Volume (bbl)
762.00	MSW 5%M, 95%W	9.58
512.00	SOS/MCW 2%O, 16%M, 82%W	7.18

* Recovery from multiple tests

Gas Rates

	Choke (inches)	Pressure (psig)	Gas Rate (Mcf/d)



**TRILOBITE
TESTING, INC.**

DRILL STEM TEST REPORT

TOOL DIAGRAM

Val Energy INC

2-8S.-37W Sherman,KS

125 N Market St STE 1110
Wichita, KS 67202

Wright Farms #1-2

Job Ticket: 64187

DST#: 2

ATTN: Tim Priest

Test Start: 2018.07.12 @ 04:01:00

Tool Information

Drill Pipe:	Length: 4254.00 ft	Diameter: 3.80 inches	Volume: 59.67 bbl	Tool Weight: 2000.00 lb
Heavy Wt. Pipe:	Length: 0.00 ft	Diameter: 2.75 inches	Volume: 0.00 bbl	Weight set on Packer: 20000.00 lb
Drill Collar:	Length: 122.00 ft	Diameter: 2.25 inches	Volume: 0.60 bbl	Weight to Pull Loose: 80000.00 lb
			<u>Total Volume: 60.27 bbl</u>	Tool Chased 0.00 ft
Drill Pipe Above KB:	22.00 ft			String Weight: Initial 66000.00 lb
Depth to Top Packer:	4374.00 ft			Final 73000.00 lb
Depth to Bottom Packer:	ft			
Interval between Packers:	116.00 ft			
Tool Length:	136.00 ft			
Number of Packers:	2	Diameter: 6.75 inches		

Tool Comments:

Tool Description	Length (ft)	Serial No.	Position	Depth (ft)	Accum. Lengths
------------------	-------------	------------	----------	------------	----------------

shut In Tool	5.00			4359.00	
hydraulic tool	5.00			4364.00	
Packer	5.00			4369.00	20.00 Bottom Of Top Packer
Packer	5.00			4374.00	
Packer - Shale stubb	0.00			4374.00	
Recorder	1.00			4375.00	
Recorder	0.00	8959	Inside	4375.00	
Recorder	0.00	8734	Outside	4375.00	
Perforations	12.00			4387.00	
change Over Sub	1.00			4388.00	
blank spacing	96.00			4484.00	
change Over Sub	1.00			4485.00	
Bullnose	5.00			4490.00	116.00 Bottom Packers & Anchor

Total Tool Length: 136.00



**TRILOBITE
TESTING, INC.**

DRILL STEM TEST REPORT

FLUID SUMMARY

Val Energy INC

2-8S.-37W Sherman,KS

125 N Market St STE 1110
Wichita, KS 67202

Wright Farms #1-2

Job Ticket: 64187

DST#: 2

ATTN: Tim Priest

Test Start: 2018.07.12 @ 04:01:00

Mud and Cushion Information

Mud Type: Gel Chem

Cushion Type:

Oil API:

deg API

Mud Weight: 9.00 lb/gal

Cushion Length:

ft

Water Salinity:

95000 ppm

Viscosity: 56.00 sec/qt

Cushion Volume:

bbbl

Water Loss: 7.95 in³

Gas Cushion Type:

Resistivity: ohm.m

Gas Cushion Pressure:

psig

Salinity: 3800.00 ppm

Filter Cake: 1.00 inches

Recovery Information

Recovery Table

Length ft	Description	Volume bbl
762.00	MSW 5%M, 95%W	9.577
512.00	SOS/MCW 2%O, 16%M, 82%W	7.182

Total Length: 1274.00 ft Total Volume: 16.759 bbl

Num Fluid Samples: 0

Num Gas Bombs: 0

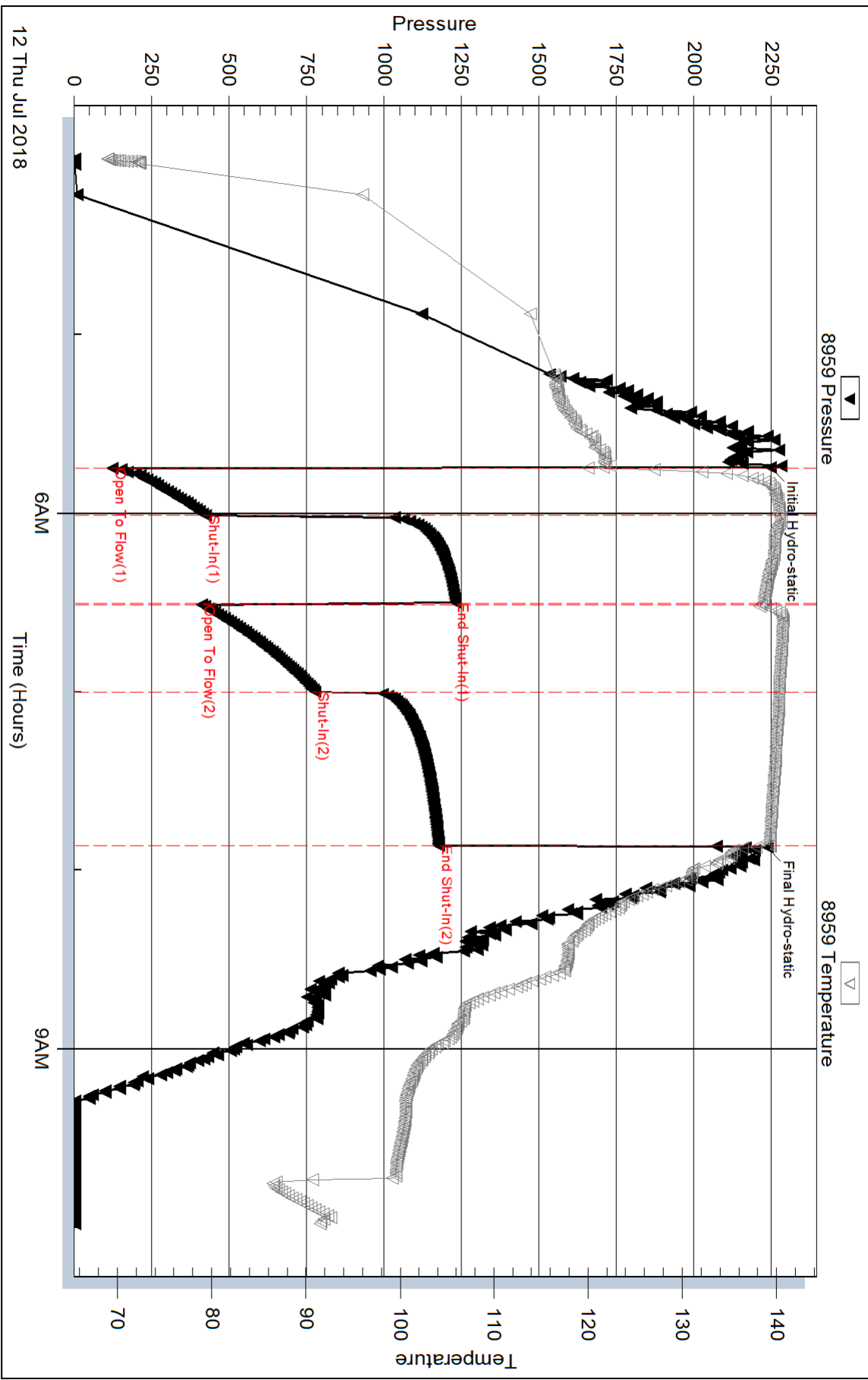
Serial #:

Laboratory Name:

Laboratory Location:

Recovery Comments: RW= .065 @ 91.5= 95,000PPM

Pressure vs. Time

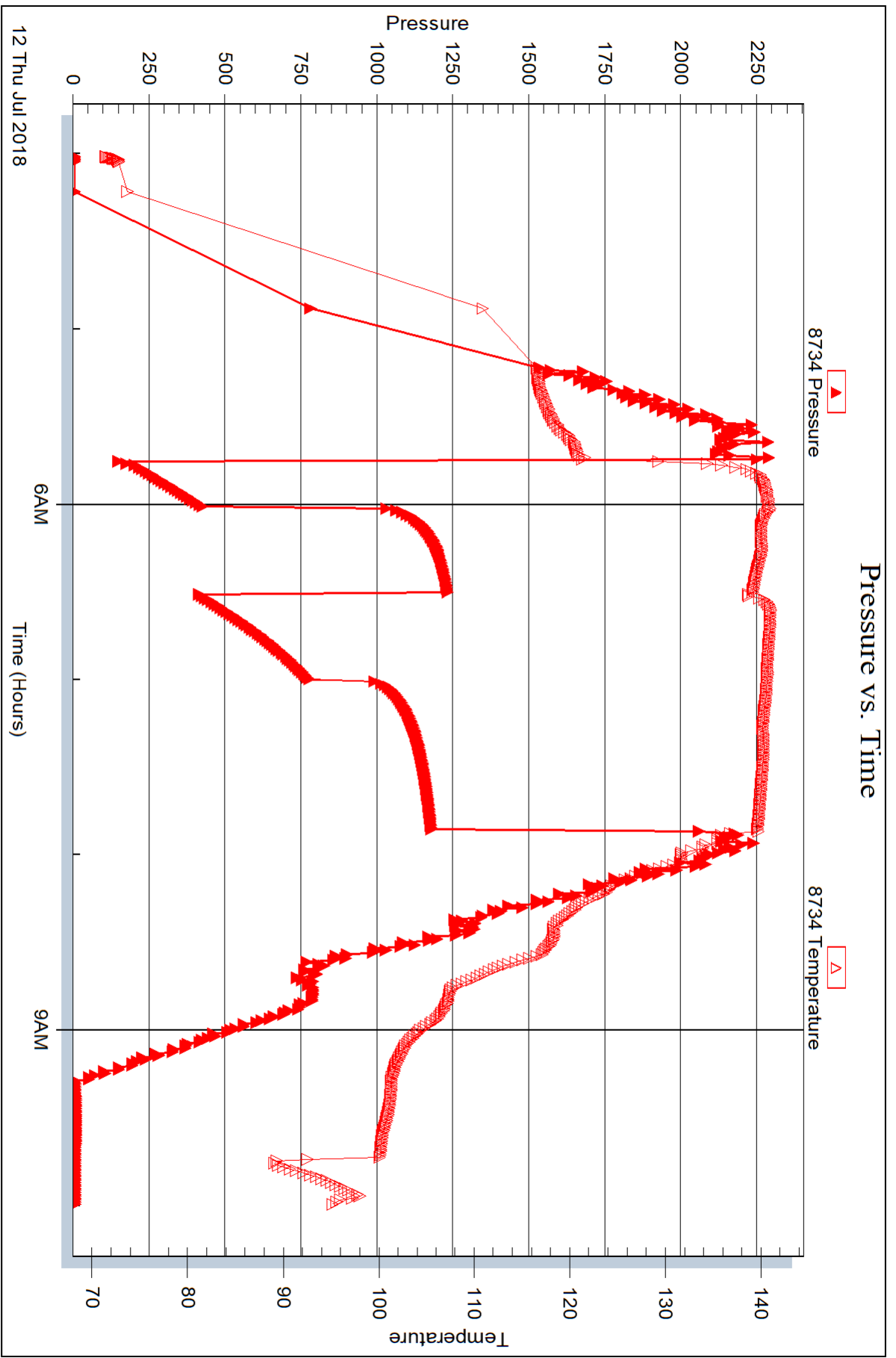


Serial #: 8734

Outside Val Energy INC

Wright Farms #1-2

DST Test Number: 2



Trilobite Testing, Inc

Ref. No: 64187

Printed: 2018.07.16 @ 16:04:42



DRILL STEM TEST REPORT

Prepared For: **Val Energy INC**

125 N Market St STE 1110
Wichita, KS 67202

ATTN: Tim Priest

Wright Farms #1-2

2-8S.-37W Sherman,KS

Start Date: 2018.07.13 @ 00:20:00

End Date: 2018.07.13 @ 05:50:50

Job Ticket #: 64188 DST #: 3

Trilobite Testing, Inc
1515 Commerce Parkway Hays, KS 67601
ph: 785-625-4778 fax: 785-625-5620

Printed: 2018.07.16 @ 16:02:14



**TRILOBITE
TESTING, INC.**

DRILL STEM TEST REPORT

Val Energy INC
125 N Market St STE 1110
Wichita, KS 67202
ATTN: Tim Priest

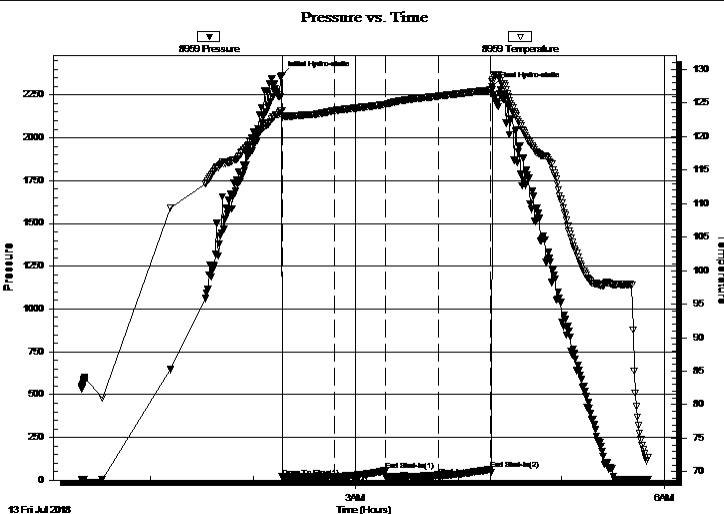
2-8S.-37W Sherman,KS
Wright Farms #1-2
Job Ticket: 64188 **DST#: 3**
Test Start: 2018.07.13 @ 00:20:00

GENERAL INFORMATION:

Formation: **Marmaton "A - B"**
Deviated: No Whipstock: ft (KB)
Time Tool Opened: 02:17:00
Time Test Ended: 05:50:50
Interval: **4529.00 ft (KB) To 4594.00 ft (KB) (TVD)**
Total Depth: 4594.00 ft (KB) (TVD)
Hole Diameter: 7.88 inches Hole Condition: Good
Test Type: Conventional Bottom Hole (Reset)
Tester: Martine Salinas
Unit No: 82
Reference Elevations: 3457.00 ft (KB)
3452.00 ft (CF)
KB to GR/CF: 5.00 ft

Serial #: 8959 **Inside**
Press@RunDepth: 24.01 psig @ 4530.00 ft (KB) Capacity: 8000.00 psig
Start Date: 2018.07.13 End Date: 2018.07.13 Last Calib.: 2018.07.13
Start Time: 00:20:01 End Time: 05:50:50 Time On Btm: 2018.07.13 @ 02:16:50
Time Off Btm: 2018.07.13 @ 04:19:30

TEST COMMENT: 30-IF-Weak blow built to 1"
30-ISI-No blow
30-FF-No blow
30-FSI-No blow



PRESSURE SUMMARY

Time (Min.)	Pressure (psig)	Temp (deg F)	Annotation
0	2364.90	123.87	Initial Hydro-static
1	19.32	122.91	Open To Flow (1)
31	19.81	123.86	Shut-In(1)
61	55.22	124.78	End Shut-In(1)
61	19.74	124.78	Open To Flow (2)
92	24.01	125.99	Shut-In(2)
122	63.08	126.90	End Shut-In(2)
123	2298.28	128.13	Final Hydro-static

Recovery

Length (ft)	Description	Volume (bbl)
3.00	100%Mud	0.01

Gas Rates

Choke (inches)	Pressure (psig)	Gas Rate (Mcf/d)

* Recovery from multiple tests



**TRILOBITE
TESTING, INC.**

DRILL STEM TEST REPORT

TOOL DIAGRAM

Val Energy INC

2-8S.-37W Sherman,KS

125 N Market St STE 1110
Wichita, KS 67202

Wright Farms #1-2

Job Ticket: 64188

DST#: 3

ATTN: Tim Priest

Test Start: 2018.07.13 @ 00:20:00

Tool Information

Drill Pipe:	Length: 4413.00 ft	Diameter: 3.80 inches	Volume: 61.90 bbl	Tool Weight: 2000.00 lb
Heavy Wt. Pipe:	Length: 0.00 ft	Diameter: 2.75 inches	Volume: 0.00 bbl	Weight set on Packer: 20000.00 lb
Drill Collar:	Length: 122.00 ft	Diameter: 2.25 inches	Volume: 0.60 bbl	Weight to Pull Loose: 80000.00 lb
			<u>Total Volume: 62.50 bbl</u>	Tool Chased 0.00 ft
Drill Pipe Above KB:	26.00 ft			String Weight: Initial 66000.00 lb
Depth to Top Packer:	4529.00 ft			Final 66000.00 lb
Depth to Bottom Packer:	ft			
Interval between Packers:	65.00 ft			
Tool Length:	85.00 ft			
Number of Packers:	2	Diameter: 6.75 inches		

Tool Comments:

Tool Description	Length (ft)	Serial No.	Position	Depth (ft)	Accum. Lengths
------------------	-------------	------------	----------	------------	----------------

shut In Tool	5.00			4514.00	
hydraulic tool	5.00			4519.00	
Packer	5.00			4524.00	20.00 Bottom Of Top Packer
Packer	5.00			4529.00	
Packer - Shale	0.00			4529.00	
stubb	1.00			4530.00	
Recorder	0.00	8959	Inside	4530.00	
Recorder	0.00	8734	Outside	4530.00	
Perforations	25.00			4555.00	
change Over Sub	1.00			4556.00	
blank spacing	32.00			4588.00	
change Over Sub	1.00			4589.00	
Bullnose	5.00			4594.00	65.00 Bottom Packers & Anchor

Total Tool Length: 85.00



**TRILOBITE
TESTING, INC.**

DRILL STEM TEST REPORT

FLUID SUMMARY

Val Energy INC

2-8S.-37W Sherman,KS

125 N Market St STE 1110
Wichita, KS 67202

Wright Farms #1-2

Job Ticket: 64188

DST#: 3

ATTN: Tim Priest

Test Start: 2018.07.13 @ 00:20:00

Mud and Cushion Information

Mud Type: Gel Chem

Cushion Type:

Oil API:

deg API

Mud Weight: 9.00 lb/gal

Cushion Length:

ft

Water Salinity:

ppm

Viscosity: 59.00 sec/qt

Cushion Volume:

bbbl

Water Loss: 8.76 in³

Gas Cushion Type:

Resistivity: ohm.m

Gas Cushion Pressure:

psig

Salinity: 5000.00 ppm

Filter Cake: 1.00 inches

Recovery Information

Recovery Table

Length ft	Description	Volume bbl
3.00	100%Mud	0.015

Total Length: 3.00 ft Total Volume: 0.015 bbl

Num Fluid Samples: 0

Num Gas Bombs: 0

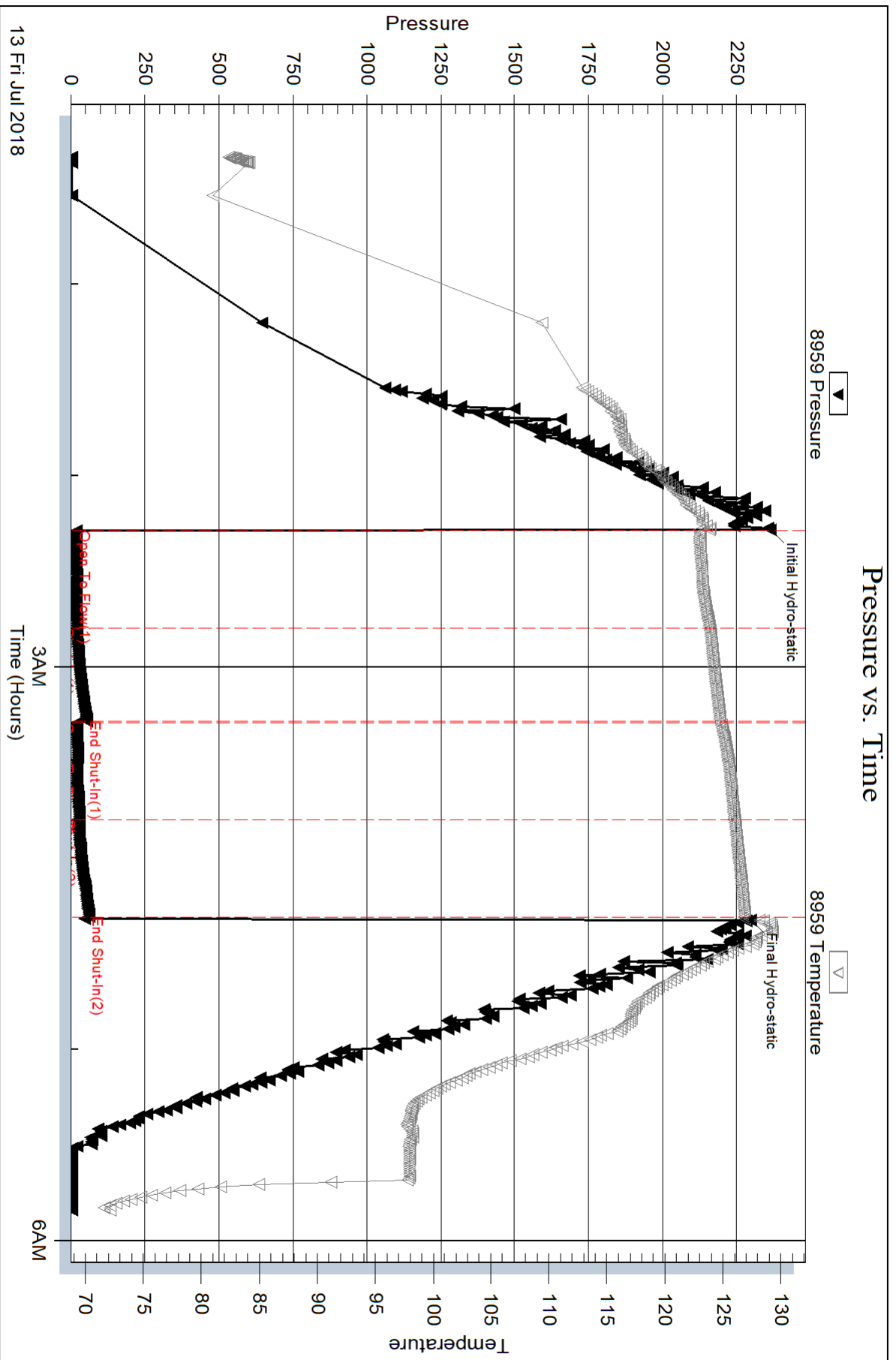
Serial #:

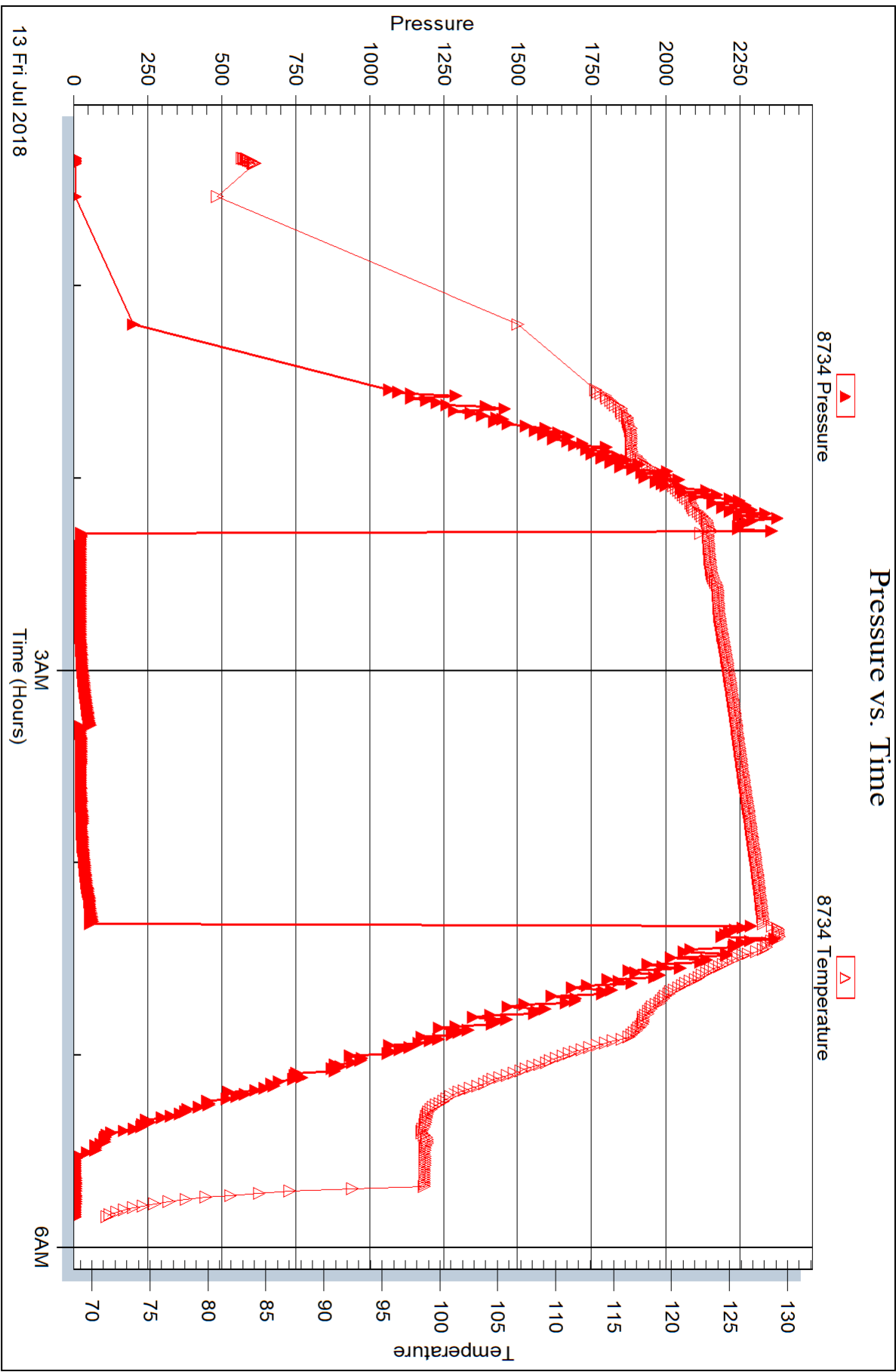
Laboratory Name:

Laboratory Location:

Recovery Comments:

Pressure vs. Time







DRILL STEM TEST REPORT

Prepared For: **Val Energy INC**

125 N Market St STE 1110
Wichita, KS 67202

ATTN: Tim Priest

Wright Farms #1-2

2-8S.-37W Sherman,KS

Start Date: 2018.07.13 @ 13:18:00

End Date: 2018.07.13 @ 20:50:00

Job Ticket #: 64189 DST #: 4

Trilobite Testing, Inc
1515 Commerce Parkway Hays, KS 67601
ph: 785-625-4778 fax: 785-625-5620

Printed: 2018.07.16 @ 15:59:25



**TRILOBITE
TESTING, INC.**

DRILL STEM TEST REPORT

Val Energy INC
125 N Market St STE 1110
Wichita, KS 67202
ATTN: Tim Priest

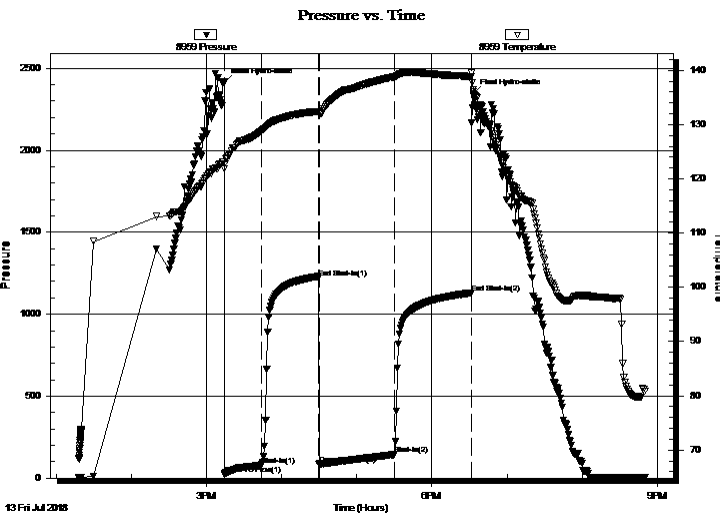
2-8S.-37W Sherman,KS
Wright Farms #1-2
Job Ticket: 64189 **DST#: 4**
Test Start: 2018.07.13 @ 13:18:00

GENERAL INFORMATION:

Formation: **Marmton " C "**
Deviated: No Whipstock: ft (KB)
Time Tool Opened: 15:14:20
Time Test Ended: 20:50:00
Interval: **4590.00 ft (KB) To 4624.00 ft (KB) (TVD)**
Total Depth: 4624.00 ft (KB) (TVD)
Hole Diameter: 7.88 inches Hole Condition: Good
Test Type: Conventional Bottom Hole (Reset)
Tester: Martine Salinas
Unit No: 82
Reference Elevations: 3457.00 ft (KB)
3452.00 ft (CF)
KB to GR/CF: 5.00 ft

Serial #: 8959 Inside
Press@RunDepth: 143.42 psig @ 4591.00 ft (KB) Capacity: 8000.00 psig
Start Date: 2018.07.13 End Date: 2018.07.13 Last Calib.: 2018.07.13
Start Time: 13:18:01 End Time: 20:50:00 Time On Btm: 2018.07.13 @ 15:14:10
Time Off Btm: 2018.07.13 @ 18:33:00

TEST COMMENT: 30-IF-BOB (12 inches) @ 21 1/2 mins (blow increased to 16")
45-ISI-Blow back built to 2" (blow increased to 18")
60-FF-BOB (12 inches) @ 21 mins (blow increased to 26")
60-FSI-Blow back built to 4 3/4" (blow increased to 30 3/4")



PRESSURE SUMMARY

Time (Min.)	Pressure (psig)	Temp (deg F)	Annotation
0	2411.82	123.14	Initial Hydro-static
1	22.23	121.85	Open To Flow (1)
31	80.74	128.92	Shut-In(1)
76	1219.34	132.37	End Shut-In(1)
76	84.91	132.13	Open To Flow (2)
136	143.42	138.79	Shut-In(2)
197	1130.02	138.83	End Shut-In(2)
199	2345.48	136.42	Final Hydro-static

Recovery

Length (ft)	Description	Volume (bbl)
65.00	GHMCO 23%G, 30%M, 47%O	0.32
305.00	CGO 20%G, 80%O	3.76
0.00	448' GIP	0.00

* Recovery from multiple tests

Gas Rates

	Choke (inches)	Pressure (psig)	Gas Rate (Mcf/d)



**TRILOBITE
TESTING, INC.**

DRILL STEM TEST REPORT

TOOL DIAGRAM

Val Energy INC

2-8S.-37W Sherman,KS

125 N Market St STE 1110
Wichita, KS 67202

Wright Farms #1-2

Job Ticket: 64189

DST#: 4

ATTN: Tim Priest

Test Start: 2018.07.13 @ 13:18:00

Tool Information

Drill Pipe:	Length: 4477.00 ft	Diameter: 3.80 inches	Volume: 62.80 bbl	Tool Weight: 2000.00 lb
Heavy Wt. Pipe:	Length: 0.00 ft	Diameter: 2.75 inches	Volume: 0.00 bbl	Weight set on Packer: 20000.00 lb
Drill Collar:	Length: 122.00 ft	Diameter: 2.25 inches	Volume: 0.60 bbl	Weight to Pull Loose: 86000.00 lb
			<u>Total Volume: 63.40 bbl</u>	Tool Chased 0.00 ft
Drill Pipe Above KB:	29.00 ft			String Weight: Initial 67000.00 lb
Depth to Top Packer:	4590.00 ft			Final 68000.00 lb
Depth to Bottom Packer:	ft			
Interval between Packers:	34.00 ft			
Tool Length:	54.00 ft			
Number of Packers:	2	Diameter: 6.75 inches		

Tool Comments: Pulled tight off bottom
Shale Packer ruined

Tool Description	Length (ft)	Serial No.	Position	Depth (ft)	Accum. Lengths
shut In Tool	5.00			4575.00	
hydraulic tool	5.00			4580.00	
Packer	5.00			4585.00	20.00 Bottom Of Top Packer
Packer	5.00			4590.00	
Packer - Shale stubb	0.00			4590.00	
	1.00			4591.00	
Recorder	0.00	8959	Inside	4591.00	
Recorder	0.00	8734	Outside	4591.00	
Perforations	28.00			4619.00	
Bullnose	5.00			4624.00	34.00 Bottom Packers & Anchor
Total Tool Length:	54.00				



**TRILOBITE
TESTING, INC.**

DRILL STEM TEST REPORT

FLUID SUMMARY

Val Energy INC

2-8S.-37W Sherman,KS

125 N Market St STE 1110
Wichita, KS 67202

Wright Farms #1-2

Job Ticket: 64189

DST#: 4

ATTN: Tim Priest

Test Start: 2018.07.13 @ 13:18:00

Mud and Cushion Information

Mud Type: Gel Chem

Cushion Type:

Oil API:

23.6 deg API

Mud Weight: 9.00 lb/gal

Cushion Length:

ft

Water Salinity:

ppm

Viscosity: 53.00 sec/qt

Cushion Volume:

bbbl

Water Loss: 11.16 in³

Gas Cushion Type:

Resistivity: ohm.m

Gas Cushion Pressure:

psig

Salinity: 7000.00 ppm

Filter Cake: 1.00 inches

Recovery Information

Recovery Table

Length ft	Description	Volume bbl
65.00	GHMCO 23%G, 30%M, 47%O	0.320
305.00	CGO 20%G, 80%O	3.759
0.00	448' GIP	0.000

Total Length: 370.00 ft Total Volume: 4.079 bbl

Num Fluid Samples: 0

Num Gas Bombs: 0

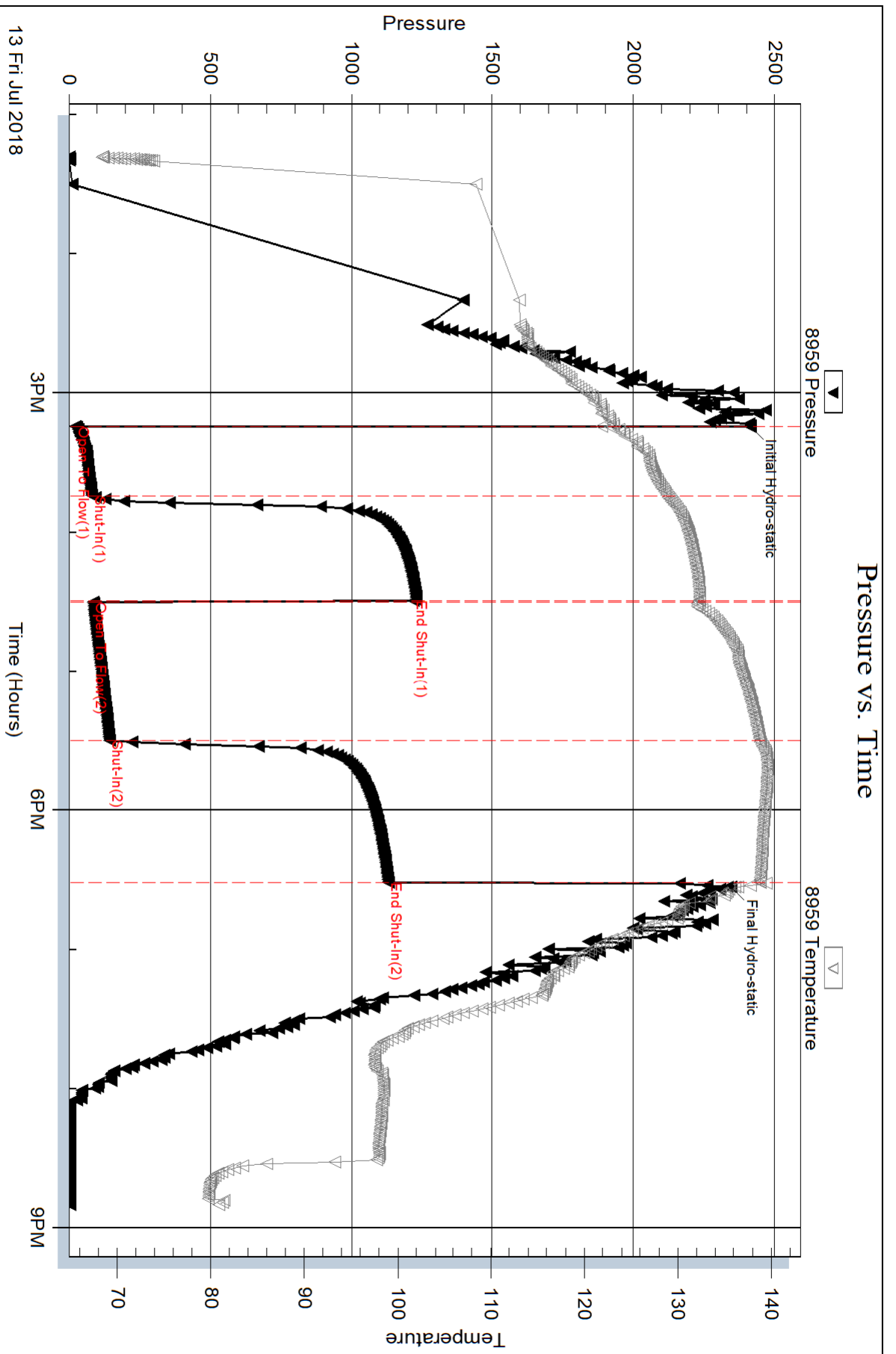
Serial #:

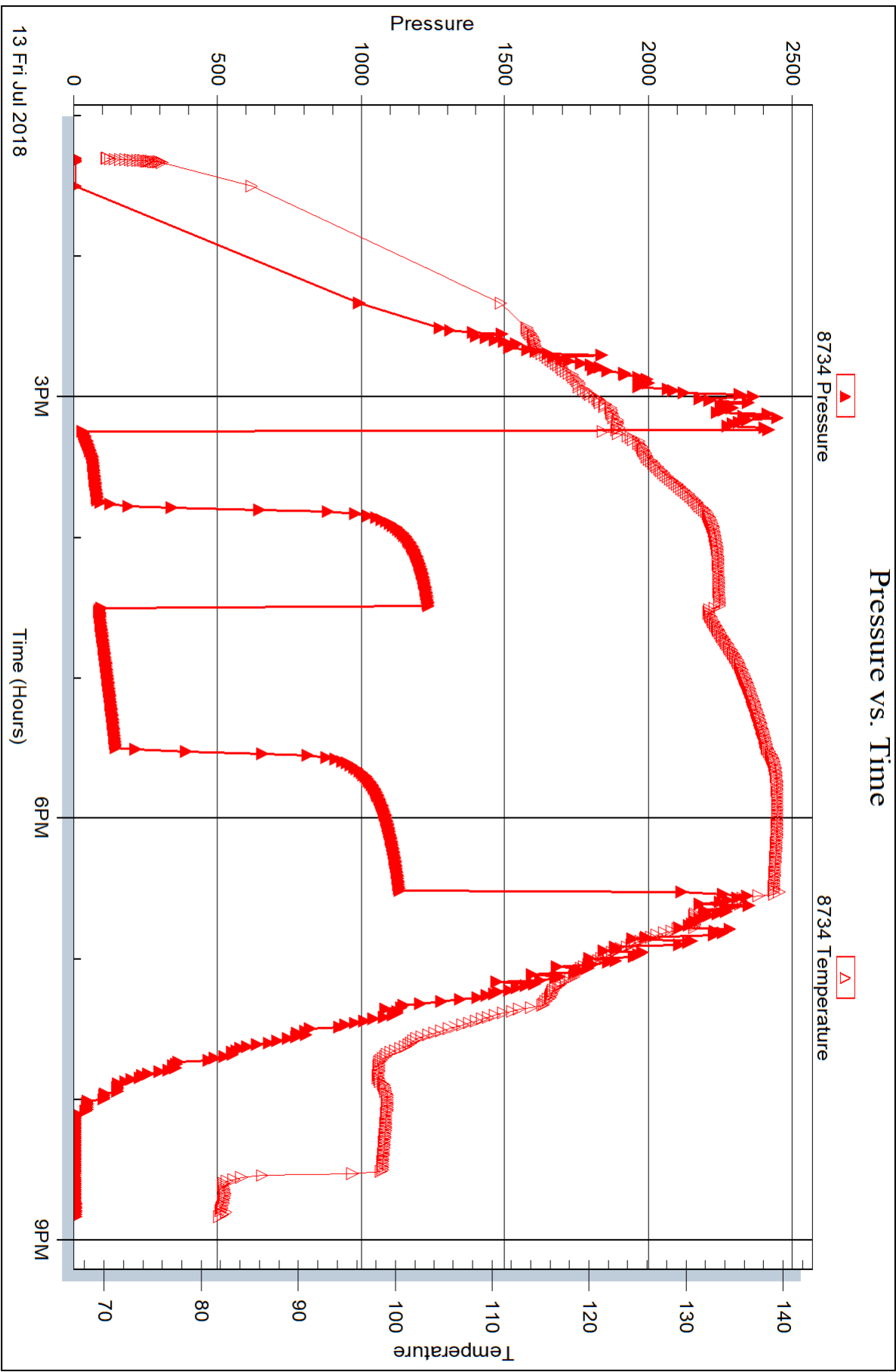
Laboratory Name:

Laboratory Location:

Recovery Comments: Gravity of oil = 26 @ 84 degs

Gravity corrected to 23.6 @ 60 degs







DRILL STEM TEST REPORT

Prepared For: **Val Energy INC**

125 N Market St STE 1110
Wichita, KS 67202

ATTN: Tim Priest

Wright Farms #1-2

2-8S.-37W Sherman,KS

Start Date: 2018.07.14 @ 09:26:00

End Date: 2018.07.14 @ 16:52:30

Job Ticket #: 64190 DST #: 5

Trilobite Testing, Inc
1515 Commerce Parkway Hays, KS 67601
ph: 785-625-4778 fax: 785-625-5620

Printed: 2018.07.16 @ 15:58:30



TRILOBITE TESTING, INC.

DRILL STEM TEST REPORT

Val Energy INC
 125 N Market St STE 1110
 Wichita, KS 67202
 ATTN: Tim Priest

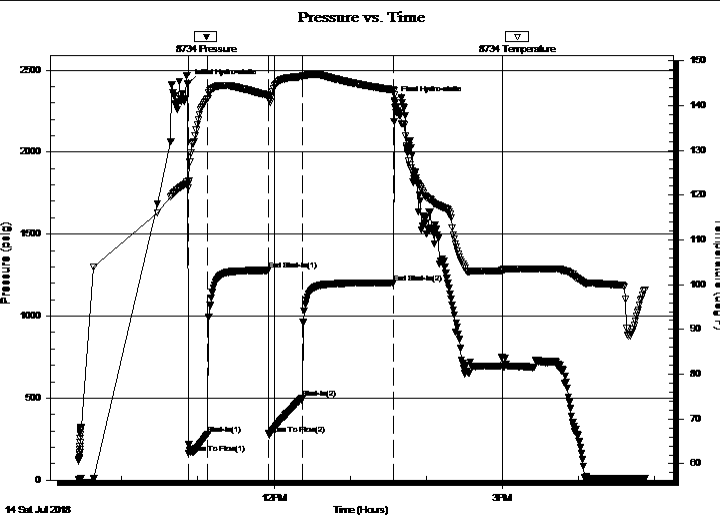
2-8S.-37W Sherman,KS
Wright Farms #1-2
 Job Ticket: 64190 **DST#: 5**
 Test Start: 2018.07.14 @ 09:26:00

GENERAL INFORMATION:

Formation: **Pawnee - Myric Stati**
 Deviated: No Whipstock: ft (KB)
 Time Tool Opened: 10:52:20
 Time Test Ended: 16:52:30
 Interval: **4633.00 ft (KB) To 4690.00 ft (KB) (TVD)**
 Total Depth: 4690.00 ft (KB) (TVD)
 Hole Diameter: 7.88 inches Hole Condition: Good
 Test Type: Conventional Bottom Hole (Reset)
 Tester: Martine Salinas
 Unit No: 82
 Reference Elevations: 3457.00 ft (KB)
 3452.00 ft (CF)
 KB to GR/CF: 5.00 ft

Serial #: 8734 Outside
 Press@RunDepth: 500.08 psig @ 4634.00 ft (KB) Capacity: 8000.00 psig
 Start Date: 2018.07.14 End Date: 2018.07.14 Last Calib.: 2018.07.14
 Start Time: 09:26:01 End Time: 16:52:30 Time On Btm: 2018.07.14 @ 10:52:10
 Time Off Btm: 2018.07.14 @ 13:34:50

TEST COMMENT: 15-IF-BOB (12 inches) @ 2 mins (blow increased to 103")
 45-ISI-Blow back built to B.O.B (12 inches) @ 6 1/2 mins (blow increased to 143 1/2")
 30-FF-BOB (12 inches) @ 2 1/2mins (blow increased to 111 1/2")
 60-FSI-Blow back built to B.O.B (12 inches) @ 15 mins blow increased to 121")



PRESSURE SUMMARY			
Time (Min.)	Pressure (psig)	Temp (deg F)	Annotation
0	2420.19	122.54	Initial Hydro-static
1	165.09	121.66	Open To Flow (1)
16	280.89	141.63	Shut-In(1)
64	1279.38	142.30	End Shut-In(1)
64	282.68	141.84	Open To Flow (2)
91	500.08	146.45	Shut-In(2)
162	1204.52	143.50	End Shut-In(2)
163	2314.80	142.32	Final Hydro-static

Recovery		
Length (ft)	Description	Volume (bbl)
186.00	GHMCO 20%G, 38%M, 42%O	1.50
0.00	25-35 MINS GHMCO 5%G, 29%M, 67%O	0.00
1142.00	0-25 MINS CGO 21%G, 79%O REVERSE	16.02
10.00	CGO 15%G, 85%O	0.14
0.00	1728' GIP	0.00

* Recovery from multiple tests

Gas Rates			
	Choke (inches)	Pressure (psig)	Gas Rate (Mcf/d)



**TRILOBITE
TESTING, INC.**

DRILL STEM TEST REPORT

TOOL DIAGRAM

Val Energy INC

2-8S.-37W Sherman,KS

125 N Market St STE 1110
Wichita, KS 67202

Wright Farms #1-2

Job Ticket: 64190

DST#: 5

ATTN: Tim Priest

Test Start: 2018.07.14 @ 09:26:00

Tool Information

Drill Pipe:	Length: 4508.00 ft	Diameter: 3.80 inches	Volume: 63.24 bbl	Tool Weight: 2000.00 lb
Heavy Wt. Pipe:	Length: 0.00 ft	Diameter: 2.75 inches	Volume: 0.00 bbl	Weight set on Packer: 20000.00 lb
Drill Collar:	Length: 122.00 ft	Diameter: 2.25 inches	Volume: 0.60 bbl	Weight to Pull Loose: 82000.00 lb
			<u>Total Volume: 63.84 bbl</u>	Tool Chased 0.00 ft
Drill Pipe Above KB:	17.00 ft			String Weight: Initial 72000.00 lb
Depth to Top Packer:	4633.00 ft			Final 78000.00 lb
Depth to Bottom Packer:	ft			
Interval between Packers:	57.00 ft			
Tool Length:	77.00 ft			
Number of Packers:	2	Diameter: 6.75 inches		

Tool Comments:

Tool Description	Length (ft)	Serial No.	Position	Depth (ft)	Accum. Lengths
------------------	-------------	------------	----------	------------	----------------

shut In Tool	5.00			4618.00	
hydraulic tool	5.00			4623.00	
Packer	5.00			4628.00	20.00 Bottom Of Top Packer
Packer	5.00			4633.00	
Packer - Shale	0.00			4633.00	
stubb	1.00			4634.00	
Recorder	0.00	8959	Inside	4634.00	
Recorder	0.00	8734	Outside	4634.00	
Perforations	17.00			4651.00	
change Over Sub	1.00			4652.00	
blank spacing	32.00			4684.00	
change Over Sub	1.00			4685.00	
Bullnose	5.00			4690.00	57.00 Bottom Packers & Anchor

Total Tool Length: 77.00



**TRILOBITE
TESTING, INC.**

DRILL STEM TEST REPORT

FLUID SUMMARY

Val Energy INC

2-8S.-37W Sherman,KS

125 N Market St STE 1110
Wichita, KS 67202

Wright Farms #1-2

Job Ticket: 64190

DST#: 5

ATTN: Tim Priest

Test Start: 2018.07.14 @ 09:26:00

Mud and Cushion Information

Mud Type: Gel Chem

Cushion Type:

Oil API:

36.4 deg API

Mud Weight: 9.00 lb/gal

Cushion Length:

ft

Water Salinity:

ppm

Viscosity: 59.00 sec/qt

Cushion Volume:

bbbl

Water Loss: 11.19 in³

Gas Cushion Type:

Resistivity: ohm.m

Gas Cushion Pressure:

psig

Salinity: 8000.00 ppm

Filter Cake: 1.00 inches

Recovery Information

Recovery Table

Length ft	Description	Volume bbl
186.00	GHMCO 20%G, 38%M, 42%O	1.498
0.00	25-35 MINS GHMCO 5%G, 29%M, 67%O REV	0.000
1142.00	0-25 MINS CGO 21%G, 79%O REVERSED	16.019
10.00	CGO 15%G, 85%O	0.140
0.00	1728' GIP	0.000

Total Length: 1338.00 ft Total Volume: 17.657 bbl

Num Fluid Samples: 0

Num Gas Bombs: 0

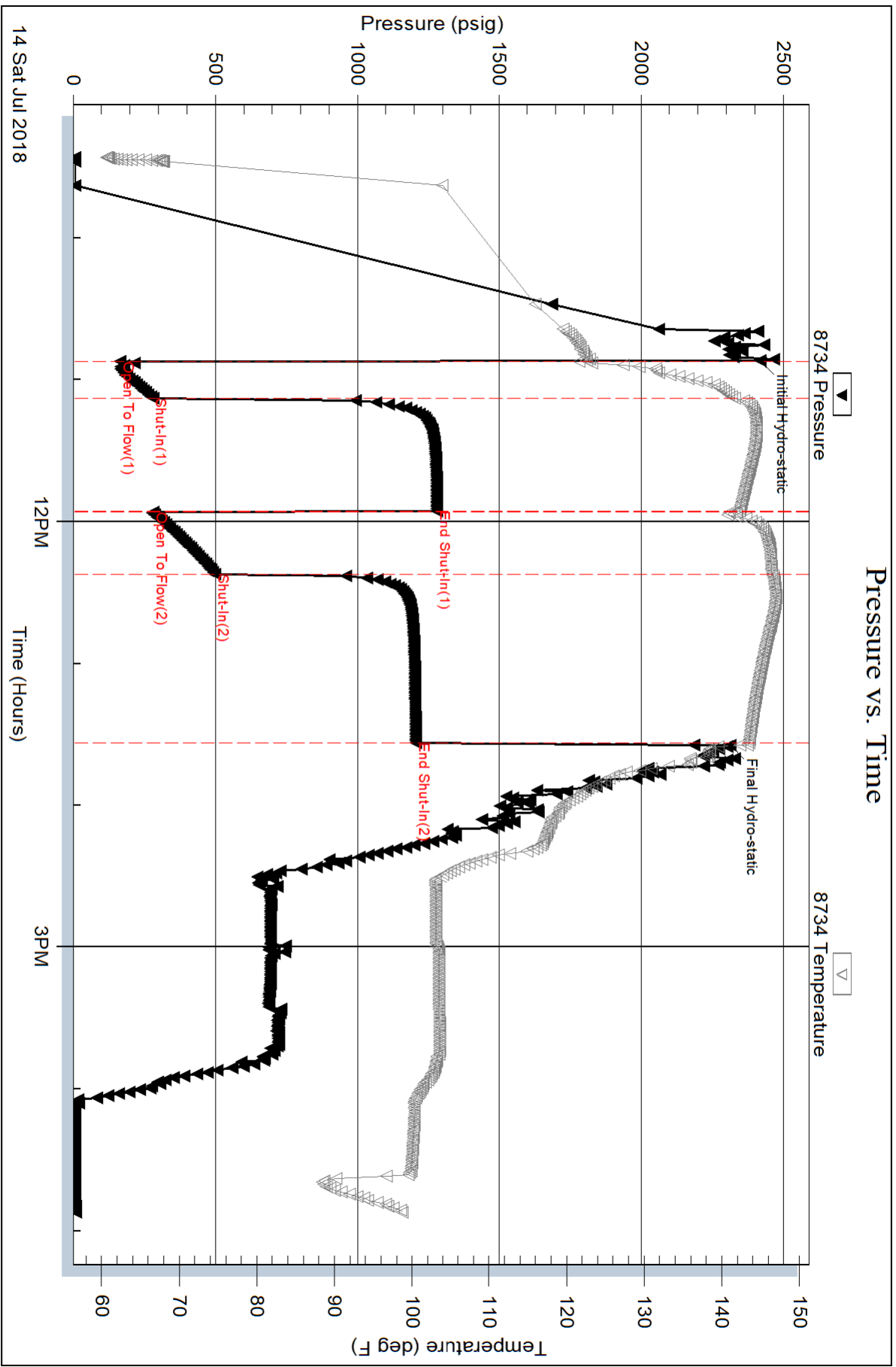
Serial #:

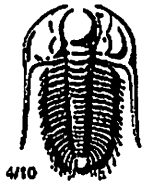
Laboratory Name:

Laboratory Location:

Recovery Comments: Gravity of oil = 40 @ 96 degs

Gravity corrected to 36.4 @ 60 degs





TRIBOLITE TESTING INC.

1515 Commerce Parkway • Hays, Kansas 67601

Test Ticket

NO. 64186

Well Name & No. Wright Farms #1-2 Test No. 1 Date 7-11-18
 Company Val Energy Inc. Elevation 3457 KB 3452 GL
 Address 125 N. Market St STE 1110 Wichita, KS 67202
 Co. Rep / Geo. Tim Priest Rig WJW #10
 Location: Sec. 2 Twp 8S. Rge. 37W. Co. Sherman State KS.

Interval Tested 4262 - 4320 Zone Tested Lansing R+C
 Anchor Length 58' Drill Pipe Run 4127 Mud Wt. 9.1
 Top Packer Depth 4257 Drill Collars Run 122 Vis SS
 Bottom Packer Depth 4262 (Shale) Wt. Pipe Run --- WL 7.2
 Total Depth 4320 Chlorides 3000 ppm System LCM 1#

Blow Description IF - S. blow built to B.O.B @ 13mins (12 inches) (blow increased to 24 1/2")
ISI - No blow (blow decreased to 23 1/2")
FF - S. blow built to B.O.B (12 inches) @ 18 mins (blow increased to 19 3/4")
FSI - No blow (blow decreased to 18 1/2")

Rec	Feet of	%gas	%oil	%water	%mud
<u>567</u>	<u>Feet of MCW</u>		<u>81</u>	<u>19</u>	
<u>0</u>	<u>Feet of Oil Spots in tool</u>				
<u>---</u>	<u>Feet of</u>				
<u>---</u>	<u>Feet of</u>				
<u>---</u>	<u>Feet of</u>				

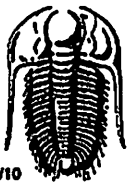
Rec Total 567 BHT 131 Gravity --- API RW OBS @ 84.2 °F Chlorides 80,000 ppm

(A) Initial Hydrostatic 2173 Test 1150 T-On Location 00:10
 (B) First Initial Flow SI Jars --- T-Started 02:16
 (C) First Final Flow 187 Safety Joint --- T-Open 04:02
 (D) Initial Shut-In 1211 Circ Sub --- T-Pulled 06:32
 (E) Second Initial Flow 190 Hourly Standby --- T-Out 08:30
 (F) Second Final Flow 293 Mileage 152 RT 152 Comments ---
 (G) Final Shut-In 1212 Sampler ---
 (H) Final Hydrostatic 2092 Straddle ---
 Shale Packer 250 Ruined Shale Packer ---

Initial Open 30 Extra Packer --- Ruined Packer ---
 Initial Shut-In 30 Extra Recorder --- Extra Copies ---
 Final Flow 30 Day Standby --- Sub Total 0
 Final Shut-In 60 Accessibility --- Total 1552
 Sub Total 1552 MP/DST Disc't ---

Approved By Tim Priest Our Representative Robert Palmer

Tribolite Testing Inc. shall not be liable for damaged of any kind of the property or personnel of the one for whom a test is made, or for any loss suffered or sustained, directly or indirectly, through the use of its equipment, or its statements or opinion concerning the results of any test, tools lost or damaged in the hole shall be paid for at cost by the party for whom the test is made.



TRILOBITE TESTING INC.

1515 Commerce Parkway • Hays, Kansas 67601

Test Ticket

NO. 64187

Well Name & No. Wright Farms #2-2 Test No. 2 Date 7-12-18
 Company Val Energy Inc Elevation 3457 KB 3452 GL
 Address 125 N. Market St STE 1110 Wichita, KS 67202
 Co. Rep / Geo. Tim Priest Rig NW #10
 Location: Sec. 2 Twp 8S. Rge. 37W. Co. Sherman State KS

Interval Tested 4374-4490 Zone Tested LKC "H-K"
 Anchor Length 116 Drill Pipe Run 4254 Mud Wt. 9.3
 Top Packer Depth 4369 Drill Collars Run 122 Vls 56
 Bottom Packer Depth 4374 (Shale) Wt. Pipe Run — WL 8.0
 Total Depth 4490 Chlorides 3800 ppm System LCM 1H
 Blow Description IF: 1" blow built to B.O.B. (12 inches) @ 3 mins (blow increased to 63")
ISE: No blow (blow decreased to 60 1/2")
FF: 2" blow built to B.O.B. (12 inches) @ 1 min (blow increased to 127 1/2")
EST: No blow (blow decreased to 126 3/4")

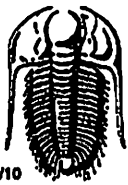
Rec	Feet of	%gas	%oil	%water	%mud
<u>762</u>	<u>MSW</u>		<u>95</u>	<u>5</u>	
<u>512</u>	<u>SOS/MCW</u>		<u>82</u>	<u>76</u>	
Rec	Feet of	%gas	%oil	%water	%mud
Rec	Feet of	%gas	%oil	%water	%mud
Rec	Feet of	%gas	%oil	%water	%mud

Rec Total 1274 BHT 138 Gravity _____ API RW. 065 @ 91.5 °F Chlorides 95,000 ppm

(A) Initial Hydrostatic 2248 Test 1150 T-On Location 03:45
 (B) First Initial Flow 124 Jars _____ T-Started 04:01
 (C) First Final Flow 425 Safety Joint _____ T-Open 05:45
 (D) Initial Shut-In 1231 Circ Sub _____ T-Pulled 07:45
 (E) Second Initial Flow 411 Hourly Standby _____ T-Out 10:00
 (F) Second Final Flow 777 Mileage 152 RT 152 Comments _____
 (G) Final Shut-In 1176 Sampler _____
 (H) Final Hydrostatic 2236 Straddle _____ Ruined Shale Packer _____
 Shale Packer 250 Ruined Packer _____
 Extra Packer _____ Extra Copies _____
 Initial Open 15 Extra Recorder _____ Sub Total 0
 Initial Shut-In 30 Day Standby _____ Total 1552
 Final Flow 30 Accessibility _____ MP/DST Disc't _____
 Final Shut-In 45 Sub Total 1552

Approved By Tim Priest Our Representative [Signature]

Triobite Testing Inc. shall not be liable for damaged of any kind of the property or personnel of the one for whom a test is made, or for any loss suffered or sustained, directly or indirectly, through the use of its equipment, or its statements or opinion concerning the results of any test, tools lost or damaged in the hole shall be paid for at cost by the party for whom the test is made.



TRILOBITE TESTING INC.

1515 Commerce Parkway • Hays, Kansas 67601

Test Ticket

NO. 64188

Well Name & No. Wright Farms #1-2 Test No. 3 Date 7-12-18
 Company Val Energies Inc Elevation 3457 KB 3452 GL
 Address 125 N. Market St. STE 1110 Wichita, KS 67202
 Co. Rep / Geo. Tim Priest Rig WW #10
 Location: Sec. 2 Twp 8S Rge. 37W Co. Sherman State KS

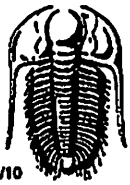
Interval Tested 4529-4594 Zone Tested Marmaton "A-B"
 Anchor Length 65 Drill Pipe Run 4413 Mud Wt. 9.2
 Top Packer Depth 4524 Drill Collars Run 122 Vis 59
 Bottom Packer Depth 4529 (Shale) Wt. Pipe Run — WL 8.8
 Total Depth 4594 Chlorides 5000 ppm System LCM 1#
 Blow Description IF-S. blow built to 1"
ISE - No blow
EF - No blow
FSI - No blow

Rec	Feet of	%gas	%oil	%water	%mud
<u>3</u>	<u>Mud</u>			<u>100</u>	
Rec	Feet of	%gas	%oil	%water	%mud
Rec	Feet of	%gas	%oil	%water	%mud
Rec	Feet of	%gas	%oil	%water	%mud
Rec	Feet of	%gas	%oil	%water	%mud

Rec Total 3 BHT 128 Gravity _____ API RW _____ @ _____ °F Chlorides _____ ppm

(A) Initial Hydrostatic 2365 Test 1150 T-On Location 22:15
 (B) First Initial Flow 19 Jars _____ T-Started 00:20
 (C) First Final Flow 20 Safety Joint _____ T-Open 02:18
 (D) Initial Shut-In 55 Circ Sub _____ T-Pulled 04:18
 (E) Second Initial Flow 20 Hourly Standby _____ T-Out 06:00
 (F) Second Final Flow 24 Mileage 152 RT 152 Comments _____
 (G) Final Shut-In 63 Sampler _____
 (H) Final Hydrostatic 2298 Straddle _____ Ruined Shale Packer _____
 Shale Packer 250 Ruined Packer _____
 Extra Packer _____ Extra Copies _____
 Extra Recorder _____ Sub Total 0
 Day Standby _____ Total 1552
 Accessibility _____ MP/DST Disc't _____
 Sub Total 1552

Approved By _____ Our Representative Yates Jalin
 Trilobite Testing Inc. shall not be liable for damaged of any kind of the property or personnel of the one for whom a test is made, or for any loss suffered or sustained, directly or indirectly, through the use of its equipment, or its statements or opinion concerning the results of any test, tools lost or damaged in the hole shall be paid for at cost by the party for whom the test is made.



TRILOBITE TESTING INC.

1515 Commerce Parkway • Hays, Kansas 67601

Test Ticket

NO. 64189

Well Name & No. Wright Farms #1-2 Test No. 4 Date 7-13-18
 Company Val Energies LLC Elevation 3457 KB 3452 GL
 Address 125 N. Market St STE 1110 Wichita, KS 67202
 Co. Rep / Geo. Tim Priest Rig WW #10
 Location: Sec. 2 Twp 8S. Rge. 37W. Co. Sherman State KS

Interval Tested 4590 - 4624 Zone Tested Marmaton "C"
 Anchor Length 34' Drill Pipe Run 4477 Mud Wt. 9.2
 Top Packer Depth 4585 Drill Collars Run 122 Vis 53
 Bottom Packer Depth 4590 (Shale) Wt. Pipe Run — WL 11.2
 Total Depth 4624 Chlorides 7000 ppm System LCM 1#

Blow Description IF - S. blow built to B.O.B (12 inches) @ 21 1/2 mins (blow increased to 16")
ISE - Blow back built 2" (blow increased to 18")
FF - S. blow built to B.O.B (12 inches) @ 21 mins (blow increased to 26")
FSI - Blow back built 4 3/4" (blow increased to 30 3/4")

Rec	Feet of	%gas	%oil	%water	%mud
<u>65</u>	<u>GHMCO</u>	<u>23</u>	<u>47</u>	<u>30</u>	
<u>305</u>	<u>CGO</u>	<u>20</u>	<u>80</u>		
<u>0</u>	<u>448 GIP</u>	<u>100</u>			

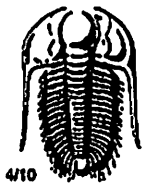
Rec Total 370 BHT 136 Gravity 23.6 API RW @ °F Chlorides ppm

(A) Initial Hydrostatic 2412 Test 1150 T-On Location 13:00
 (B) First Initial Flow 22 Jars _____ T-Started 13:18
 (C) First Final Flow 81 Safety Joint _____ T-Open 15:14
 (D) Initial Shut-In 1219 Circ Sub _____ T-Pulled 18:29
 (E) Second Initial Flow 85 Hourly Standby _____ T-Out 20:50
 (F) Second Final Flow 143 Mileage 152 RT 152 Comments Pulled fight off bottom
 (G) Final Shut-In 1130 Sampler _____
 (H) Final Hydrostatic 2345 Straddle _____ Ruined Shale Packer 350
 Ruined Packer _____

Initial Open 30 Extra Packer _____ Extra Copies _____
 Initial Shut-In 45 Extra Recorder _____ Sub Total 0
 Final Flow 60 Day Standby _____ Total 1902
 Final Shut-In 60 Accessibility _____ MP/DST Disc't _____
 Sub Total _____

Approved By [Signature] Our Representative [Signature]

Trilobite Testing Inc. shall not be liable for damaged of any kind of the property or personnel of the one for whom a test is made, or for any loss suffered or sustained, directly or indirectly, through the use of its equipment, or its statements or opinion concerning the results of any test, tools lost or damaged in the hole shall be paid for at cost by the party for whom the test is made.



TRILOBITE TESTING INC.

1515 Commerce Parkway • Hays, Kansas 67601

Test Ticket

NO. 64190

Well Name & No. Wright Farms #1-2 Test No. 5 Date 7-14-18
 Company Val Energies LLC Elevation 3457 KB 3452 GL
 Address 125 N. Market St. STE 110 Wichita, KS 67202
 Co. Rep / Geo. Tim Priest Rig NW #10
 Location: Sec. 2 Twp 8S. Rge. 37W Co. Sherman State KS

Interval Tested 4633 - 4690 Zone Tested Pawnee / Myric Station
 Anchor Length 57 Drill Pipe Run 4508 Mud Wt. 9.2
 Top Packer Depth 4628 Drill Collars Run 122 Vis 59
 Bottom Packer Depth 4633 (Shak) Wt. Pipe Run — WL 11.2
 Total Depth 4690 Chlorides 8000 ppm System LCM 1#
 Blow Description IF - S. blow built to B.O.B (12 inches) @ 2 mins (blow increased to 183 1/4")
ISI - blow back built to B.O.B (12 inches) @ 6 1/2 mins (blow increased to 143 3/4")
EF - S. blow built to B.O.B (12 inches) @ 2 1/4 mins (blow increased to 111 1/2")
FSI - Blow back built to B.O.B (12 inches) @ 15 mins (blow increased to 121")

Rec	Feet of	%gas	%oil	%water	%mud
186	G H M C O	20	92	38	
Rev	G H M C O 25-35 mins.	5	67	29	
1142 Rev	C G O 0-25 mins.	21	79		
10'	C G O	15	85		
0	1728' GIP	100			

Rec Total 1338 BHT 142 Gravity 36.4 API RW @ °F Chlorides ppm

(A) Initial Hydrostatic 2420 Test 1150 T-On Location 09:10
 (B) First Initial Flow 165 Jars _____ T-Started 09:26
 (C) First Final Flow 281 Safety Joint _____ T-Open 10:52
 (D) Initial Shut-In 1279 Circ Sub Drop Bar 50 T-Pulled 13:22
 (E) Second Initial Flow 283 Hourly Standby _____ T-Out 16:52
 (F) Second Final Flow 500 Mileage 152 RT X2 304 Comments Tools loaded @ 05:30
 (G) Final Shut-In 1205 Sampler _____ 7-15-18
 (H) Final Hydrostatic 2315 Straddle _____ Ruined Shale Packer _____
 Shale Packer 250 Ruined Packer _____
 Extra Packer _____ Extra Copies _____
 Extra Recorder _____ Sub Total 0
 Day Standby _____ Total 1754
 Accessibility _____ MP/DST Disc't _____
 Sub Total 1754

Approved By [Signature]

Our Representative [Signature]

Trilobite Testing Inc. shall not be liable for damaged of any kind of the property or personnel of the one for whom a test is made, or for any loss suffered or sustained, directly or indirectly, through the use of its equipment, or its statements or opinion concerning the results of any test, tools lost or damaged in the hole shall be paid for at cost by the party for whom the test is made.