

DRILL STEM TEST REPORT

Prepared For: **Palomino Petroleum Inc**

4924 SE 84th St
Newton KS 67114+8827

ATTN: Ryan Seib

H2 #2

8-9S-25W Ness,KS

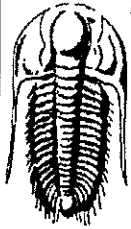
Start Date: 2004.01.01 @ 02:46:00

End Date: 2004.01.01 @ 17:40:45

Job Ticket #: 57078 DST #: 1

Trilobite Testing, Inc
1515 Commerce Parkway Hays, KS 67601
ph: 785-625-4778 fax: 785-625-5620

Printed: 2019.01.03 @ 11:31:05



**TRILOBITE
TESTING, INC.**

DRILL STEM TEST REPORT

Palomino Petroleum Inc
4924 SE 84th St
New ton KS 67114+8827
ATTN: Ryan Seib

8-9S-25W Ness,KS
H2 #2
Job Ticket: 57078 **DST#: 1**
Test Start: 2004.01.01 @ 02:46:00

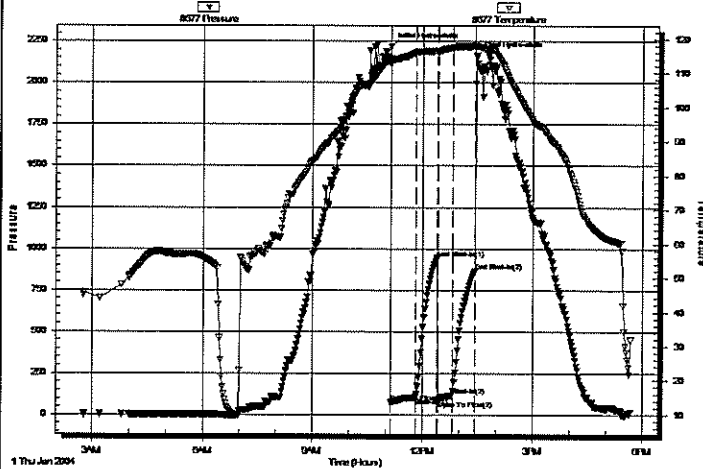
GENERAL INFORMATION:

Formation: **Marmaton**
Deviated: No Whipstock: ft (KB)
Time Tool Opened: 11:08:30
Time Test Ended: 17:40:45
Interval: **4260.00 ft (KB) To 4400.00 ft (KB) (TVD)**
Total Depth: 4400.00 ft (KB) (TVD)
Hole Diameter: 7.88 inches Hole Condition:
Test Type: Conventional Bottom Hole (Initial)
Tester: Spencer J. Staab
Unit No: 67
Reference Elevations: 2576.00 ft (KB)
2564.00 ft (CF)
KB to GRVCF: 12.00 ft

Serial #: 8677 **Inside**
Press@RunDepth: 114.52 psig @ 4261.00 ft (KB) Capacity: 8000.00 psig
Start Date: 2004.01.01 End Date: 2004.01.01 Last Calib.: 2019.01.01
Start Time: 02:46:05 End Time: 17:40:45 Time On Btm: 2004.01.01 @ 11:08:15
Time Off Btm: 2004.01.01 @ 13:27:45

TEST COMMENT: 30-IF-BOB 7 mins; Built to 20"
30-ISI-Weak; Built to 1&1/4"
30-FF-BOB 3 1/2 mins; Built to 40"
30-FSI-Weak; Built to 3/4"

Pressure vs. Time



PRESSURE SUMMARY

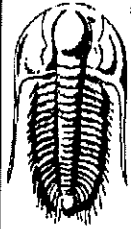
Time (Min.)	Pressure (psig)	Temp (deg F)	Annotation
0	2214.82	114.26	Initial Hydro-static
1	74.43	112.88	Open To Flow (1)
41	105.35	115.99	Shut-In(1)
76	942.00	116.58	End Shut-In(1)
78	88.26	116.42	Open To Flow (2)
100	114.52	117.49	Shut-In(2)
138	864.78	117.95	End Shut-In(2)
140	2165.97	117.86	Final Hydro-static

Recovery

Length (ft)	Description	Volume (bbl)
110.00	MCO 10%M 90%O	0.54
90.00	GO 50%G 50%O	1.23
0.00	700' GP 100%G	0.00

Gas Rates

Choke (inches)	Pressure (psig)	Gas Rate (Mcf/d)



TRILOBITE
TESTING, INC.

DRILL STEM TEST REPORT

TOOL DIAGRAM

Palomino Petroleum Inc
4924 SE 84th St
New ton KS 67114+8827

ATTN: Ryan Seib

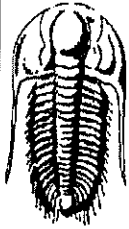
8-9S-25W Ness,KS
H2 #2
Job Ticket: 57078 DST#: 1
Test Start: 2004.01.01 @ 02:46:00

Tool Information

Drill Pipe:	Length: 4136.00 ft	Diameter: 3.82 inches	Volume: 58.63 bbl	Tool Weight: 2500.00 lb
Heavy Wt. Pipe:	Length: ft	Diameter: 2.75 inches	Volume: - bbl	Weight set on Packer: 25000.00 lb
Drill Collar:	Length: 115.00 ft	Diameter: 2.25 inches	Volume: 0.57 bbl	Weight to Pull Loose: 66000.00 lb
			<u>Total Volume: - bbl</u>	Tool Chased ft
Drill Pipe Above KB:	18.00 ft			String Weight: Initial 63000.00 lb
Depth to Top Packer:	4260.00 ft			Final 64000.00 lb
Depth to Bottom Packer:	ft			
Interval betw een Packers:	140.00 ft			
Tool Length:	167.00 ft			
Number of Packers:	1	Diameter: 6.75 inches		

Tool Comments:

Tool Description	Length (ft)	Serial No.	Position	Depth (ft)	Accum. Lengths
Change Over Sub	1.00			4234.00	
Shut In Tool	5.00			4239.00	
Hydraulic tool	5.00			4244.00	
Jars	5.00			4249.00	
Safety Joint	2.00			4251.00	
Packer	5.00			4256.00	27.00 Bottom Of Top Packer
Packer	4.00			4260.00	
Stubb	1.00			4261.00	
Recorder	0.00	8677	Inside	4261.00	
Recorder	0.00	8018	Inside	4261.00	
Perforations	9.00			4270.00	
Change Over Sub	1.00			4271.00	
Drill Pipe	125.00			4396.00	
Change Over Sub	1.00			4397.00	
Bullnose	3.00			4400.00	140.00 Bottom Packers & Anchor
Total Tool Length:	167.00				



TRILOBITE
TESTING, INC.

DRILL STEM TEST REPORT

FLUID SUMMARY

Palomino Petroleum Inc

8-9S-25W Ness,KS

4924 SE 84th St
New ton KS 67114+8827

H2 #2

Job Ticket: 57078

DST#: 1

ATTN: Ryan Seib

Test Start: 2004.01.01 @ 02:46:00

Mud and Cushion Information

Mud Type: Gel Chem	Cushion Type:	Oil API: 40 deg API
Mud Weight: 10.00 lb/gal	Cushion Length: ft	Water Salinity: ppm
Viscosity: 75.00 sec/qt	Cushion Volume: bbl	
Water Loss: 7.19 in ³	Gas Cushion Type:	
Resistivity: ohm.m	Gas Cushion Pressure: psig	
Salinity: 5800.00 ppm		
Filter Cake: inches		

Recovery Information

Recovery Table

Length ft	Description	Volume bbl
110.00	MCO 10%M 90%O	0.541
90.00	GO 50%G 50%O	1.229
0.00	700' GIP 100%G	0.000

Total Length: 200.00 ft Total Volume: 1.770 bbl

Num Fluid Samples: 0

Num Gas Bombs: 0

Serial #:

Laboratory Name:

Laboratory Location:

Recovery Comments: 2#LCM

Serial #: 8677

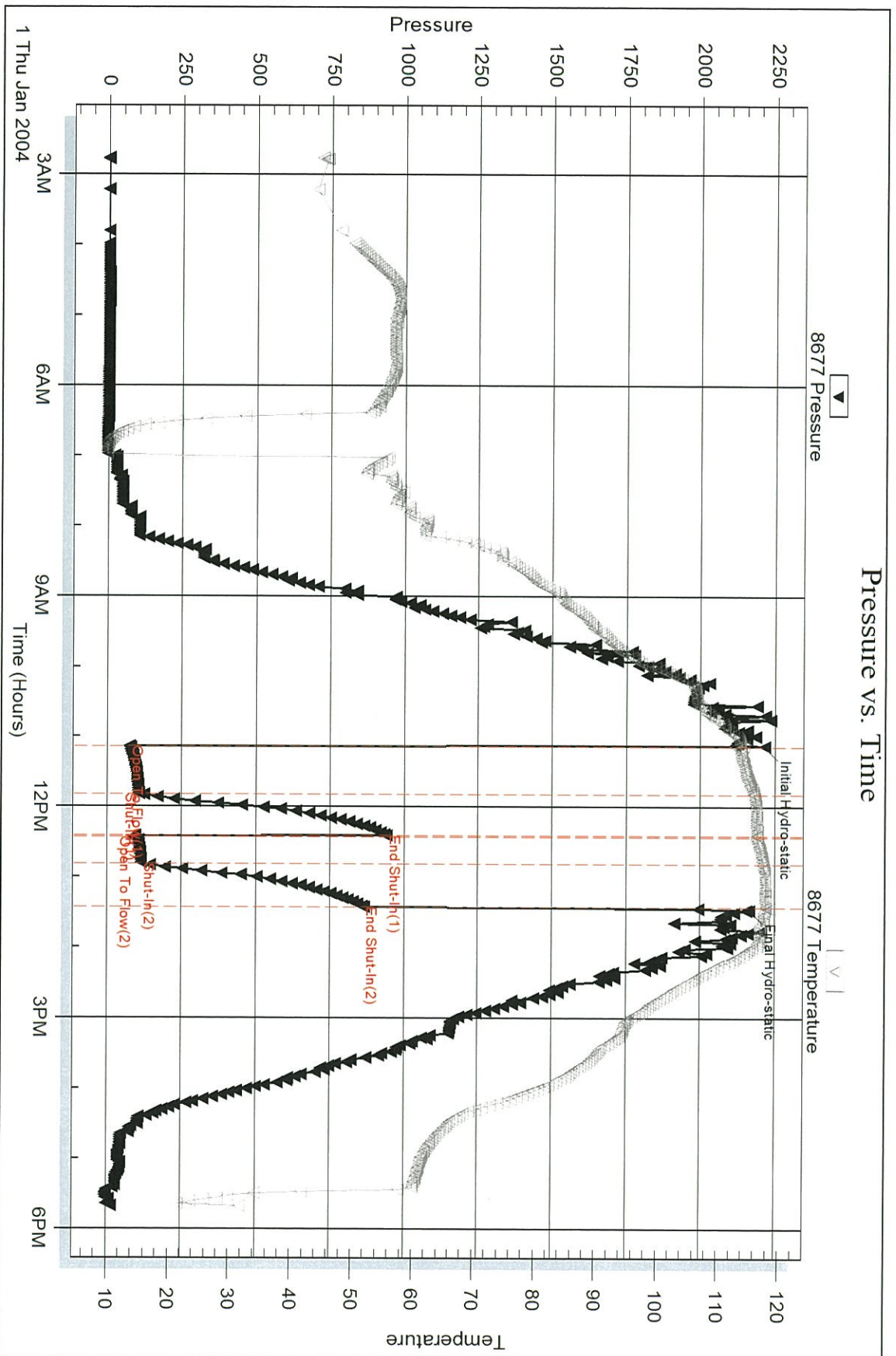
Inside

Palomino Petroleum Inc

H2 #2

DST Test Number: 1

Pressure vs. Time



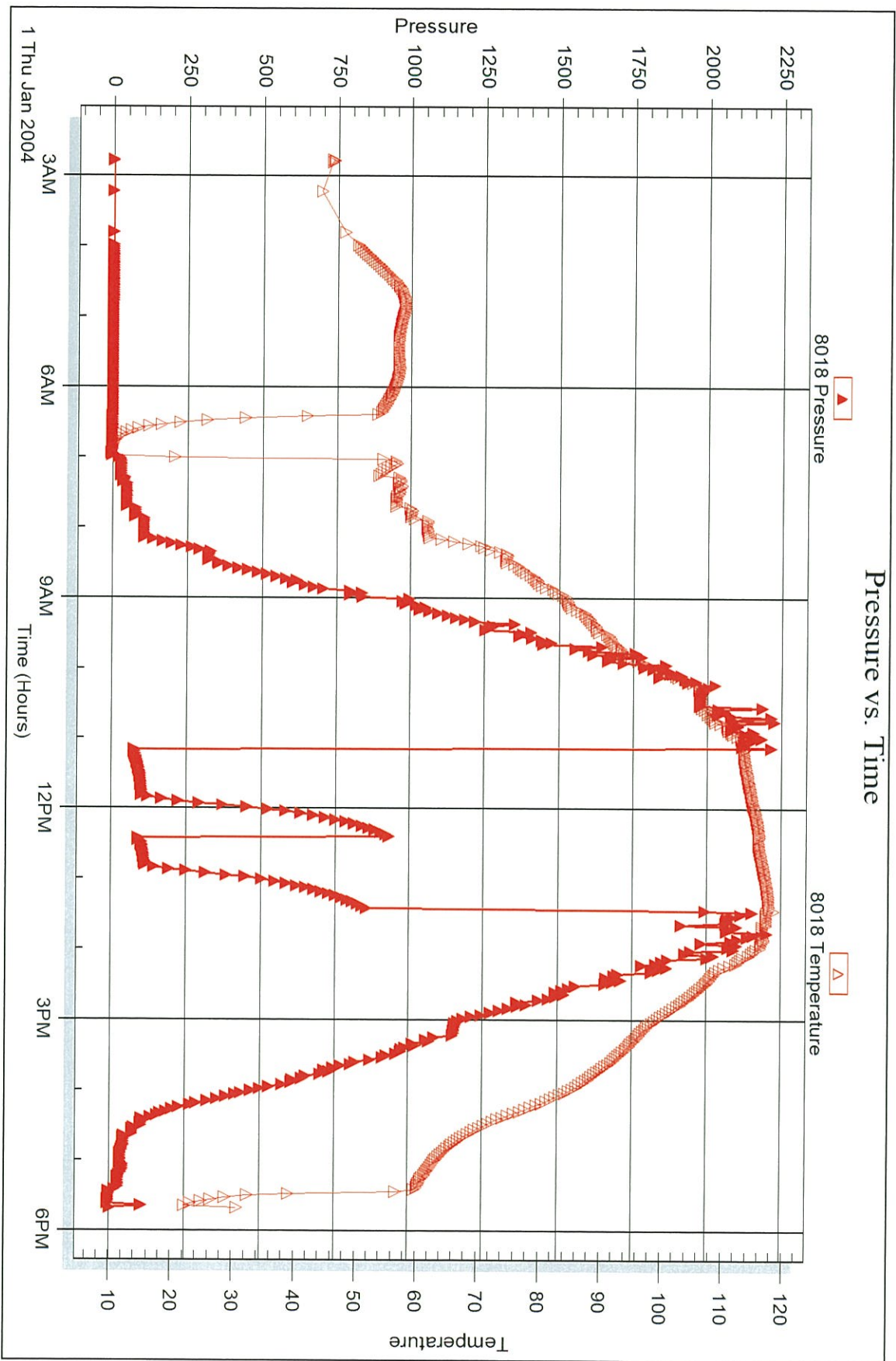
Serial #: 8018

Inside

Palomino Petroleum Inc

H2 #2

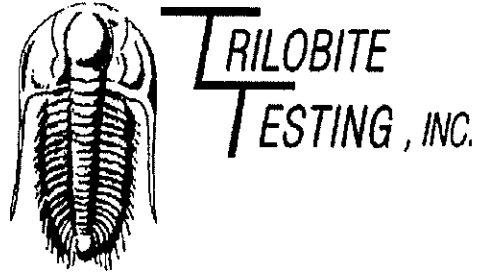
DST Test Number: 1



Trilobite Testing, Inc

Ref. No: 57078

Printed: 2019.01.03 @ 11:31:06



DRILL STEM TEST REPORT

Prepared For: **Palomino Petroleum Inc**

4924 SE 84th St
Newton KS 67114+8827

ATTN: Ryan Seib

H2 #2

8-9S-25W Ness,KS

Start Date: 2019.01.02 @ 15:55:00

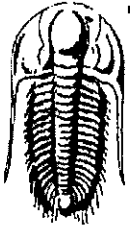
End Date: 2019.01.03 @ 00:26:30

Job Ticket #: 57079 DST #: 2

Trilobite Testing, Inc
1515 Commerce Parkway Hays, KS 67601
ph: 785-625-4778 fax: 785-625-5620

Printed: 2019.01.03 @ 11:29:19

Palomino Petroleum Inc
8-9S-25W Ness,KS
H2 #2
DST # 2
Mississippi
2019.01.02



**TRILOBITE
TESTING, INC.**

DRILL STEM TEST REPORT

Palomino Petroleum Inc
4924 SE 84th St
New ton KS 67114+8827
ATTN: Ryan Seib

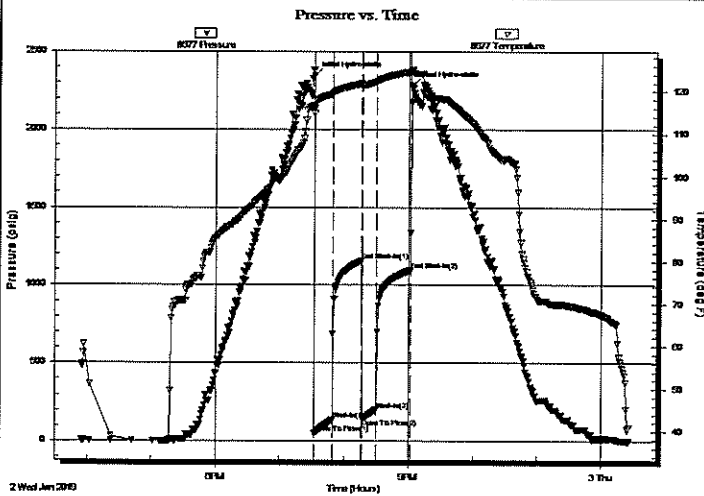
8-9S-25W Ness,KS
H2 #2
Job Ticket: 57079 **DST#: 2**
Test Start: 2019.01.02 @ 15:55:00

GENERAL INFORMATION:

Formation: **Mississippi**
Deviated: No Whipstock: ft (KB)
Time Tool Opened: 19:32:45
Time Test Ended: 00:26:30
Interval: **4544.00 ft (KB) To 4555.00 ft (KB) (TVD)**
Total Depth: 4555.00 ft (KB) (TVD)
Hole Diameter: 7.88 inches Hole Condition: Fair
Test Type: Conventional Bottom Hole (Reset)
Tester: Spencer J. Staab
Unit No: 67
Reference Elevations: 2576.00 ft (KB)
2564.00 ft (CF)
KB to GR/CF: 12.00 ft

Serial #: 8677 Inside
Press@RunDepth: 200.39 psig @ 4545.00 ft (KB) Capacity: 8000.00 psig
Start Date: 2019.01.02 End Date: 2019.01.03 Last Calib.: 2019.01.03
Start Time: 15:55:05 End Time: 00:26:29 Time On Btm: 2019.01.02 @ 19:32:30
Time Off Btm: 2019.01.02 @ 21:03:15

TEST COMMENT: 15-IF-BOB 2 mins; Built to 33"
30-ISI-Fair; Built to 5"
15-FF-BOB 3 1/2 mins; Built to 20"
30-FSI-Fair; Built to 5"



PRESSURE SUMMARY

Time (Min.)	Pressure (psig)	Temp (deg F)	Annotation
0	2346.75	115.93	Initial Hydro-static
1	48.29	114.94	Open To Flow (1)
17	135.71	119.33	Shut-In(1)
44	1155.14	121.81	End Shut-In(1)
44	144.09	121.48	Open To Flow (2)
58	200.39	122.23	Shut-In(2)
89	1096.12	124.66	End Shut-In(2)
91	2281.47	124.80	Final Hydro-static

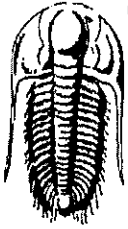
Recovery

Length (ft)	Description	Volume (bbl)
60.00	HMCO 35%M 65%O	0.30
540.00	GO 60%G 40%O	7.15
0.00	300' GIP 100%G	0.00

* Recovery from multiple tests

Gas Rates

Choke (inches)	Pressure (psig)	Gas Rate (Mcf/d)



**TRILOBITE
TESTING, INC.**

DRILL STEM TEST REPORT

TOOL DIAGRAM

Palomino Petroleum Inc
4924 SE 84th St
New ton KS 67114+8827

ATTN: Ryan Seib

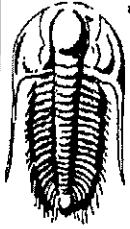
8-9S-25W Ness,KS
H2 #2
Job Ticket: 57079 DST#: 2
Test Start: 2019.01.02 @ 15:55:00

Tool Information

Drill Pipe:	Length: 4422.00 ft	Diameter: 3.82 inches	Volume: 62.68 bbl	Tool Weight: 2500.00 lb
Heavy Wt. Pipe:	Length: ft	Diameter: 2.75 inches	Volume: - bbl	Weight set on Packer: 25000.00 lb
Drill Collar:	Length: 115.00 ft	Diameter: 2.25 inches	Volume: 0.57 bbl	Weight to Pull Loose: 67000.00 lb
			<u>Total Volume: - bbl</u>	Tool Chased ft
Drill Pipe Above KB:	20.00 ft			String Weight: Initial 64000.00 lb
Depth to Top Packer:	4544.00 ft			Final 66000.00 lb
Depth to Bottom Packer:	ft			
Interval betw een Packers:	11.00 ft			
Tool Length:	38.00 ft			
Number of Packers:	1	Diameter: 6.75 inches		

Tool Comments:

Tool Description	Length (ft)	Serial No.	Position	Depth (ft)	Accum. Lengths
Change Over Sub	1.00			4518.00	
Shut In Tool	5.00			4523.00	
Hydraulic tool	5.00			4528.00	
Jars	5.00			4533.00	
Safety Joint	2.00			4535.00	
Packer	5.00			4540.00	27.00 Bottom Of Top Packer
Packer	4.00			4544.00	
Stubb	1.00			4545.00	
Recorder	0.00	8677	Inside	4545.00	
Recorder	0.00	8018	Inside	4545.00	
Perforations	7.00			4552.00	
Bullnose	3.00			4555.00	11.00 Bottom Packers & Anchor
Total Tool Length:	38.00				



**TRILOBITE
TESTING, INC**

DRILL STEM TEST REPORT

FLUID SUMMARY

Palomino Petroleum Inc
4924 SE 84th St
New ton KS 67114+8827
ATTN: Ryan Seib

8-9S-25W Ness, KS
H2 #2
Job Ticket: 57079 **DST#: 2**
Test Start: 2019.01.02 @ 15:55:00

Mud and Cushion Information

Mud Type: Gel Chem	Cushion Type:	Oil API: 37 deg API
Mud Weight: 9.00 lb/gal	Cushion Length: ft	Water Salinity: ppm
Viscosity: 68.00 sec/qt	Cushion Volume: bbl	
Water Loss: 8.39 in ³	Gas Cushion Type:	
Resistivity: ohm.m	Gas Cushion Pressure: psig	
Salinity: 4200.00 ppm		
Filter Cake: inches		

Recovery Information

Recovery Table

Length ft	Description	Volume bbl
60.00	HMCO 35%M 65%O	0.295
540.00	GO 60%G 40%O	7.146
0.00	300' GIP 100%G	0.000

Total Length: 600.00 ft Total Volume: 7.441 bbl
Num Fluid Samples: 0 Num Gas Bombs: 0 Serial #:
Laboratory Name: Laboratory Location:
Recovery Comments: 2#LCM

Serial #: 8677

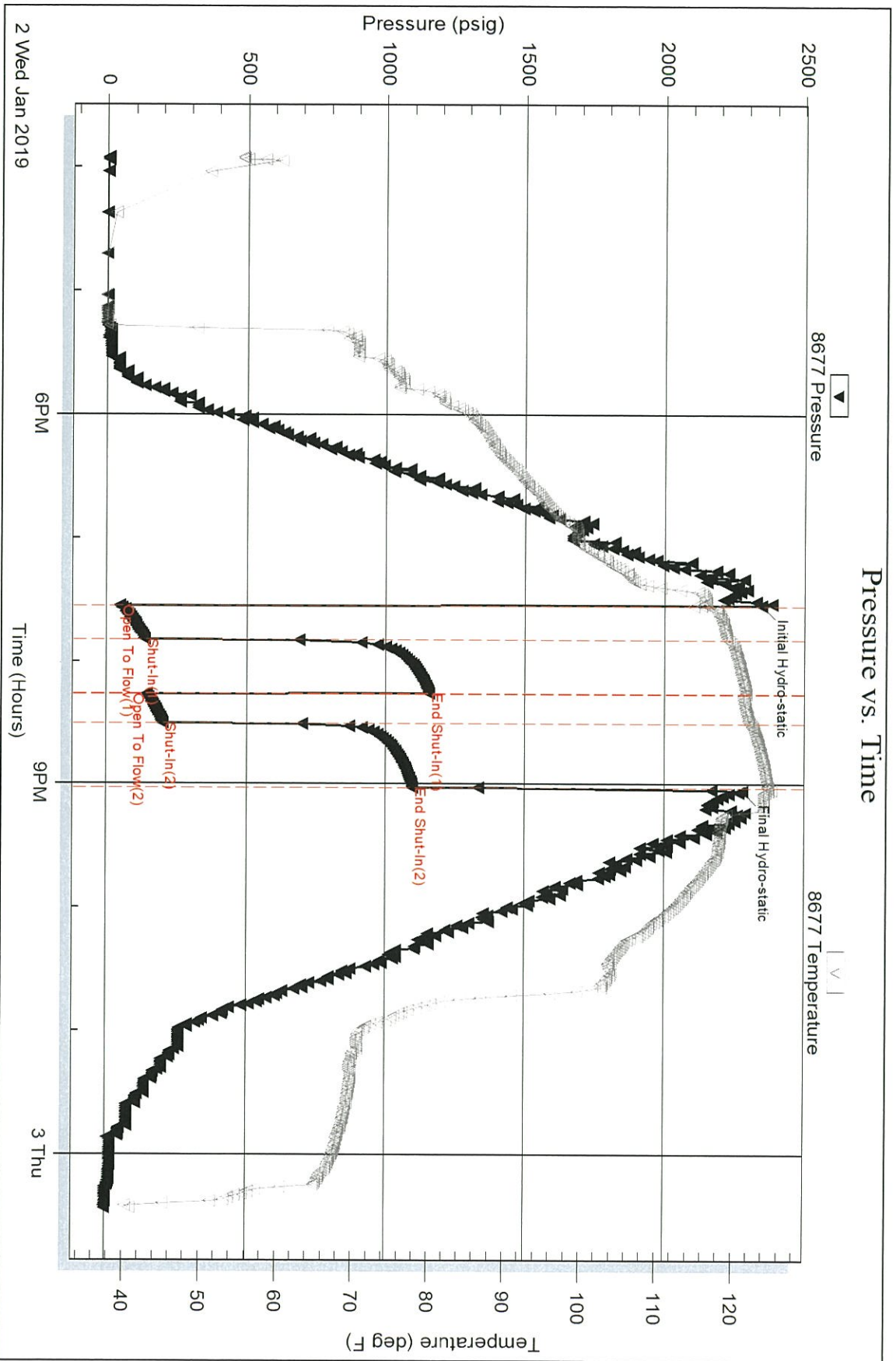
Inside

Palomino Petroleum Inc

H2 #2

DST Test Number: 2

Pressure vs. Time



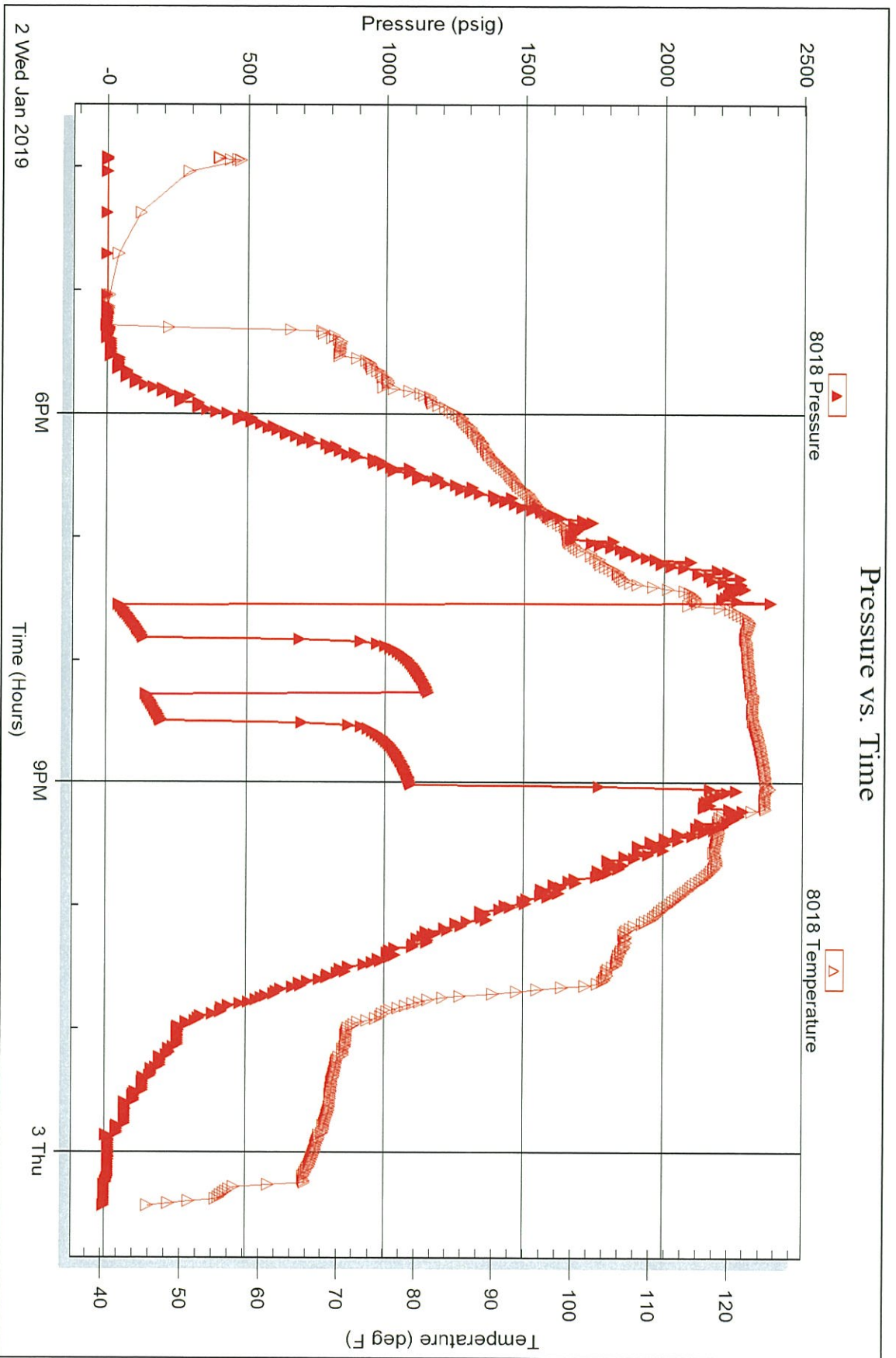
Serial #: 8018

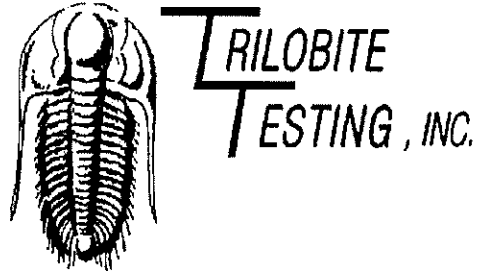
Inside

Palomino Petroleum Inc

H2 #2

DST Test Number: 2





DRILL STEM TEST REPORT

Prepared For: **Palomino Petroleum Inc**

4924 SE 84th St
Newton KS 67114+8827

ATTN: Ryan Seib

H2 #2

8-9S-25W Ness,KS

Start Date: 2019.01.03 @ 23:05:00

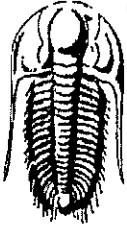
End Date: 2019.01.04 @ 10:34:30

Job Ticket #: 64980 DST #: 3

Trilobite Testing, Inc
1515 Commerce Parkway Hays, KS 67601
ph: 785-625-4778 fax: 785-625-5620

Printed: 2019.01.04 @ 15:41:53

Palomino Petroleum Inc
8-9S-25W Ness,KS
H2 #2
DST # 3
Mississippi
2019.01.03



TRILOBITE TESTING, INC.

DRILL STEM TEST REPORT

Palomino Petroleum Inc
 4924 SE 84th St
 Newton KS 67114+8827
 ATTN: Ryan Seib

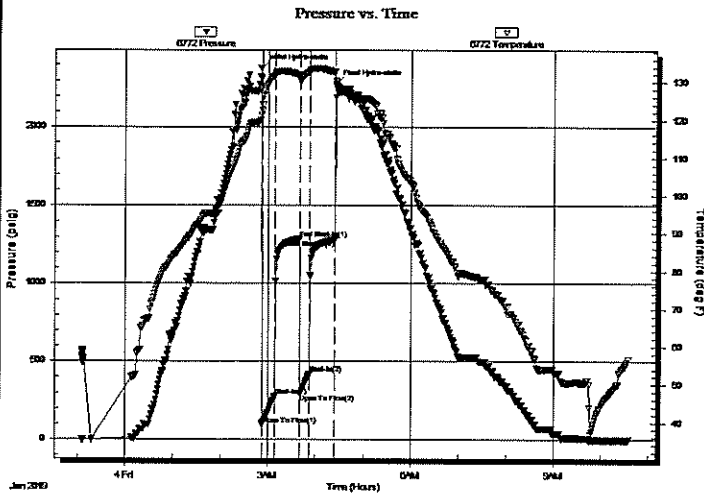
8-9S-25W Ness,KS
H2 #2
 Job Ticket: 64980 DST#: 3
 Test Start: 2019.01.03 @ 23:05:00

GENERAL INFORMATION:

Formation: **Mississippi**
 Deviated: No Whipstock: ft (KB)
 Time Tool Opened: 02:52:20
 Time Test Ended: 10:34:30
 Interval: **4556.00 ft (KB) To 4576.00 ft (KB) (TVD)**
 Total Depth: 4675.00 ft (KB) (TVD)
 Hole Diameter: 7.88 inches Hole Condition: Fair
 Test Type: (Initial)
 Tester: Benny Mulligan
 Unit No: 66
 Reference Elevations: 2576.00 ft (KB)
 2564.00 ft (CF)
 KB to GR/CF: 12.00 ft

Serial #: 6772 Inside
 Press@RunDepth: 422.24 psig @ 4557.00 ft (KB) Capacity: 8000.00 psig
 Start Date: 2019.01.03 End Date: 2019.01.04 Last Calib.: 2019.01.04
 Start Time: 23:05:01 End Time: 10:34:30 Time On Btm: 2019.01.04 @ 02:50:40
 Time Off Btm: 2019.01.04 @ 04:25:20

TEST COMMENT: I.F.-15-BOB 2 mins 45 secs total build of 60 "
 ISI-30- 4 " blow back
 F.F-15- BOB 3 mins total build of 40"
 FSI-30-2" blow back



PRESSURE SUMMARY

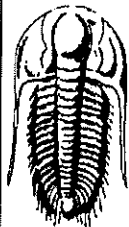
Time (Min.)	Pressure (psig)	Temp (deg F)	Annotation
0	2379.12	119.96	Initial Hydro-static
2	93.33	122.31	Open To Flow (1)
18	280.00	131.74	Shut-In(1)
49	1286.38	131.83	End Shut-In(1)
50	293.73	130.36	Open To Flow (2)
62	422.24	132.71	Shut-In(2)
93	1279.30	132.60	End Shut-In(2)
95	2279.71	128.97	Final Hydro-static

Recovery

Length (ft)	Description	Volume (bbl)
120.00	GOCWM 10%G 10%O 30%W 50%M	0.64
934.00	GO 20%G 80%O	13.10
0.00	120' GIP	0.00

Gas Rates

	Choke (inches)	Pressure (psig)	Gas Rate (Mcf/d)



**TRILOBITE
TESTING, INC.**

DRILL STEM TEST REPORT

Palomino Petroleum Inc
4924 SE 84th St
New ton KS 67114+8827
ATTN: Ryan Seib

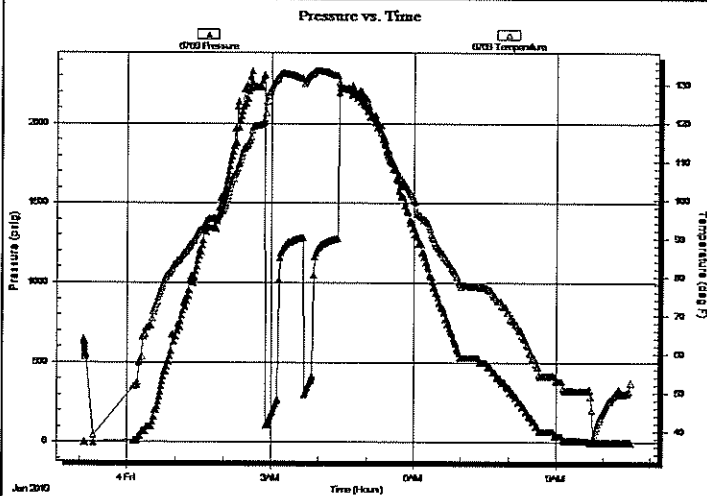
8-9S-25W Ness,KS
H2 #2
Job Ticket: 64980 **DST#: 3**
Test Start: 2019.01.03 @ 23:05:00

GENERAL INFORMATION:

Formation: **Mississippi**
Deviated: No Whipstock: ft (KB)
Time Tool Opened: 02:52:20
Time Test Ended: 10:34:30
Interval: **4556.00 ft (KB) To 4576.00 ft (KB) (TVD)**
Total Depth: 4675.00 ft (KB) (TVD)
Hole Diameter: 7.88 inches Hole Condition: Fair
Test Type: (Initial)
Tester: Benny Mulligan
Unit No: 66
Reference Elevations: 2576.00 ft (KB)
2564.00 ft (CF)
KB to GR/CF: 12.00 ft

Serial #: 6769 Outside
Press@RunDepth: psig @ 4557.00 ft (KB)
Capacity: 8000.00 psig
Start Date: 2019.01.03 End Date: 2019.01.04 Last Calib.: 2019.01.04
Start Time: 23:05:01 End Time: 10:34:30 Time On Btm:
Time Off Btm:

TEST COMMENT: I.F.-15-BOB 2 mins 45 secs total build of 60 "
ISI-30- 4 " blow back
F.F.-15- BOB 3 mins total build of 40"
FSI-30-2" blow back



PRESSURE SUMMARY

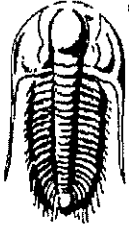
Time (Min.)	Pressure (psig)	Temp (deg F)	Annotation

Recovery

Length (ft)	Description	Volume (bbl)
120.00	GOCWM 10%G 10%O 30%W 50%M	0.64
934.00	GO 20%G 80%O	13.10
0.00	120' GIP	0.00

Gas Rates

Choke (inches)	Pressure (psig)	Gas Rate (Mcf/d)



TRILOBITE TESTING, INC.

DRILL STEM TEST REPORT

Palomino Petroleum Inc
4924 SE 84th St
New ton KS 67114+8827
ATTN: Ryan Seib

8-9S-25W Ness,KS
H2 #2
Job Ticket: 64980 DST#: 3
Test Start: 2019.01.03 @ 23:05:00

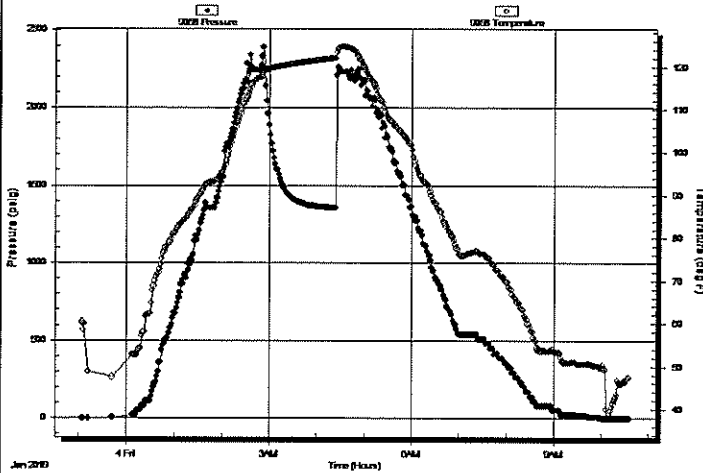
GENERAL INFORMATION:

Formation: **Mississippi**
Deviated: No Whipstock: ft (KB)
Time Tool Opened: 02:52:20
Time Test Ended: 10:34:30
Interval: 4556.00 ft (KB) To 4576.00 ft (KB) (TVD)
Total Depth: 4675.00 ft (KB) (TVD)
Hole Diameter: 7.88 inches Hole Condition: Fair
Reference Elevations: 2576.00 ft (KB)
2564.00 ft (CF)
KB to GR/CF: 12.00 ft
Test Type: (Initial)
Tester: Benny Mulligan
Unit No: 66

Serial #: 9058 Below (Straddle)
Press@RunDepth: psig @ 4582.00 ft (KB)
Start Date: 2019.01.03 End Date: 2019.01.04
Start Time: 23:05:05 End Time: 10:34:30
Capacity: 8000.00 psig
Last Calib.: 1899.12.30
Time On Btm:
Time Off Btm:

TEST COMMENT: I.F.-15-BOB 2 mins 45 secs total build of 60"
ISI-30- 4" blow back
F.F.-15- BOB 3 mins total build of 40"
FSI-30-2" blow back

Pressure vs. Time



PRESSURE SUMMARY

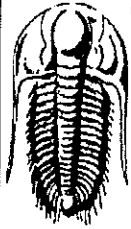
Time (Min.)	Pressure (psig)	Temp (deg F)	Annotation

Recovery

Length (ft)	Description	Volume (bbl)
120.00	GOCWM 10%G 10%O 30%W 50%M	0.64
934.00	GO 20%G 80%O	13.10
0.00	120' GIP	0.00

Gas Rates

	Choke (inches)	Pressure (psig)	Gas Rate (Mcf/d)



TRILOBITE
TESTING, INC.

DRILL STEM TEST REPORT

TOOL DIAGRAM

Palomino Petroleum Inc
4924 SE 84th St
New ton KS 67114+8827
ATTN: Ryan Seib

8-9S-25W Ness,KS
H2 #2
Job Ticket: 64980 DST#: 3
Test Start: 2019.01.03 @ 23:05:00

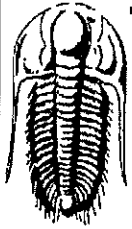
Tool Information

Drill Pipe:	Length: 4545.00 ft	Diameter: 3.80 inches	Volume: 63.75 bbl	Tool Weight: 2500.00 lb
Heavy Wt. Pipe:	Length: 0.00 ft	Diameter: inches	Volume: 0.00 bbl	Weight set on Packer: 25000.00 lb
Drill Collar:	Length: 115.00 ft	Diameter: 2.25 inches	Volume: 0.57 bbl	Weight to Pull Loose: 80000.00 lb
			<u>Total Volume: 64.32 bbl</u>	Tool Chased 0.00 ft
Drill Pipe Above KB:	131.00 ft			String Weight: Initial 69000.00 lb
Depth to Top Packer:	4556.00 ft			Final 71000.00 lb
Depth to Bottom Packer:	4680.00 ft			
Interval betw een Packers:	124.00 ft			
Tool Length:	151.00 ft			
Number of Packers:	1	Diameter: 6.75 inches		

Tool Comments:

Tool Description	Length (ft)	Serial No.	Position	Depth (ft)	Accum. Lengths
Change Over Sub	1.00			4530.00	
Shut In Tool	5.00			4535.00	
Hydraulic tool	5.00			4540.00	
Jars	5.00			4545.00	
Safety Joint	2.00			4547.00	
Packer	5.00			4552.00	27.00 Bottom Of Top Packer
Packer	4.00			4556.00	
Stubb	1.00			4557.00	
Recorder	0.00	6772	Inside	4557.00	
Recorder	0.00	6769	Outside	4557.00	
Perforations	14.00			4571.00	
Blank Off Sub	1.00			4572.00	
Packer - Shale	4.00			4576.00	
Stubb	1.00			4577.00	
Perforations	4.00			4581.00	
Change Over Sub	1.00			4582.00	
Recorder	0.00	9058	Below	4582.00	
Drill Pipe	94.00			4676.00	
Change Over Sub	1.00			4677.00	
Bullnose	3.00			4680.00	124.00 Bottom Packers & Anchor

Total Tool Length: 151.00



TRILOBITE
TESTING, INC.

DRILL STEM TEST REPORT

FLUID SUMMARY

Palomino Petroleum Inc
4924 SE 84th St
New ton KS 67114+8827
ATTN: Ryan Seib

8-9S-25W Ness, KS
H2 #2
Job Ticket: 64980 DST#: 3
Test Start: 2019.01.03 @ 23:05:00

Mud and Cushion Information

Mud Type: Gel Chem	Cushion Type:	Oil API:	37 deg API
Mud Weight: 9.00 lb/gal	Cushion Length: ft	Water Salinity:	ppm
Viscosity: 48.00 sec/qt	Cushion Volume: bbl		
Water Loss: 9.19 in ³	Gas Cushion Type:		
Resistivity: ohm.m	Gas Cushion Pressure: psig		
Salinity: 5300.00 ppm			
Filter Cake: 1.00 inches			

Recovery Information

Recovery Table

Length ft	Description	Volume bbl
120.00	GOCWM 10%G 10%O 30%W 50%M	0.636
934.00	GO 20%G 80%O	13.102
0.00	120' GIP	0.000

Total Length: 1054.00 ft Total Volume: 13.738 bbl
 Num Fluid Samples: 0 Num Gas Bombs: 0 Serial #:
 Laboratory Name: Laboratory Location:
 Recovery Comments:

Serial #: 6772

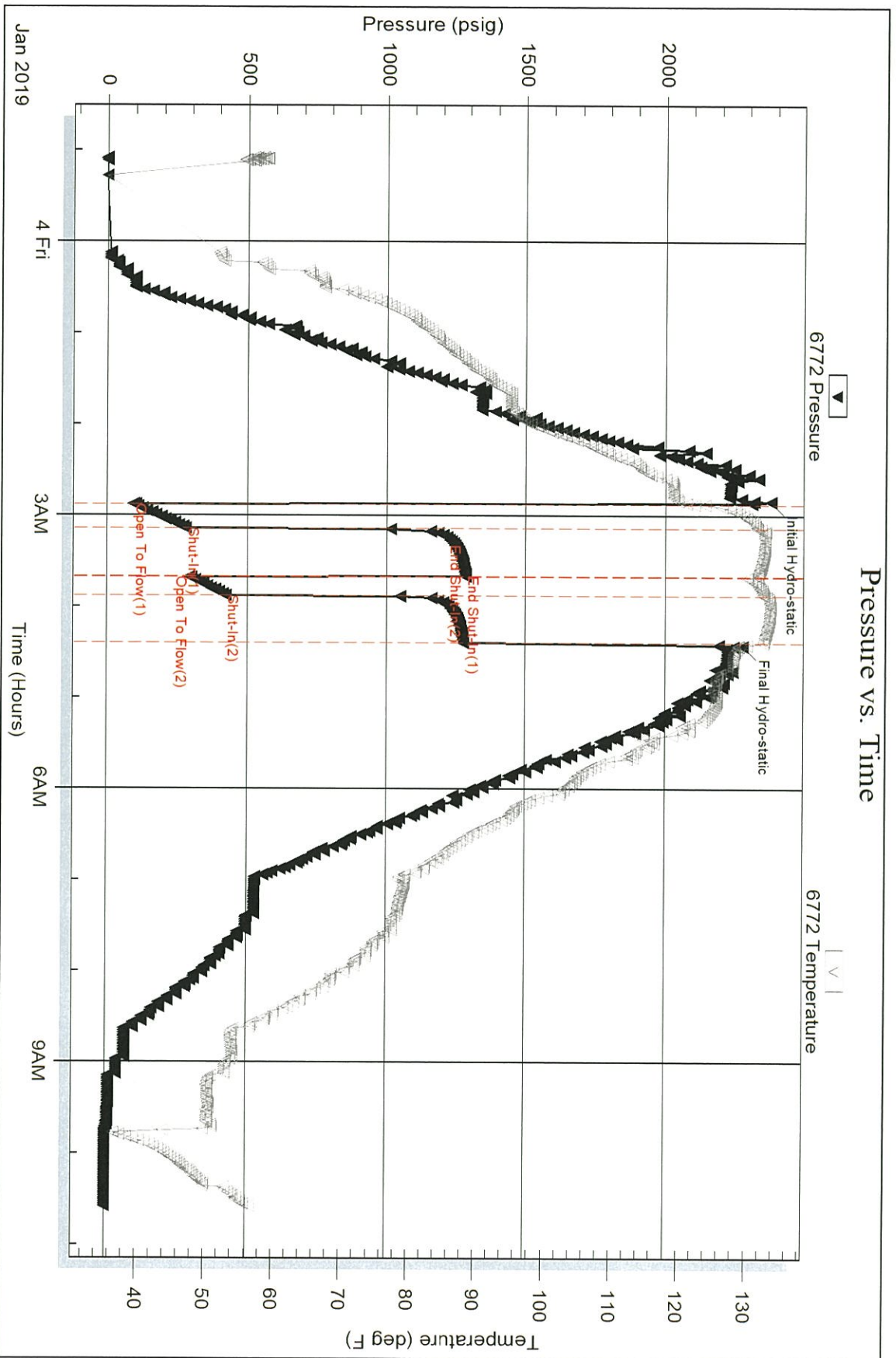
Inside

Palomino Petroleum Inc

H2 #2

DST Test Number: 3

Pressure vs. Time



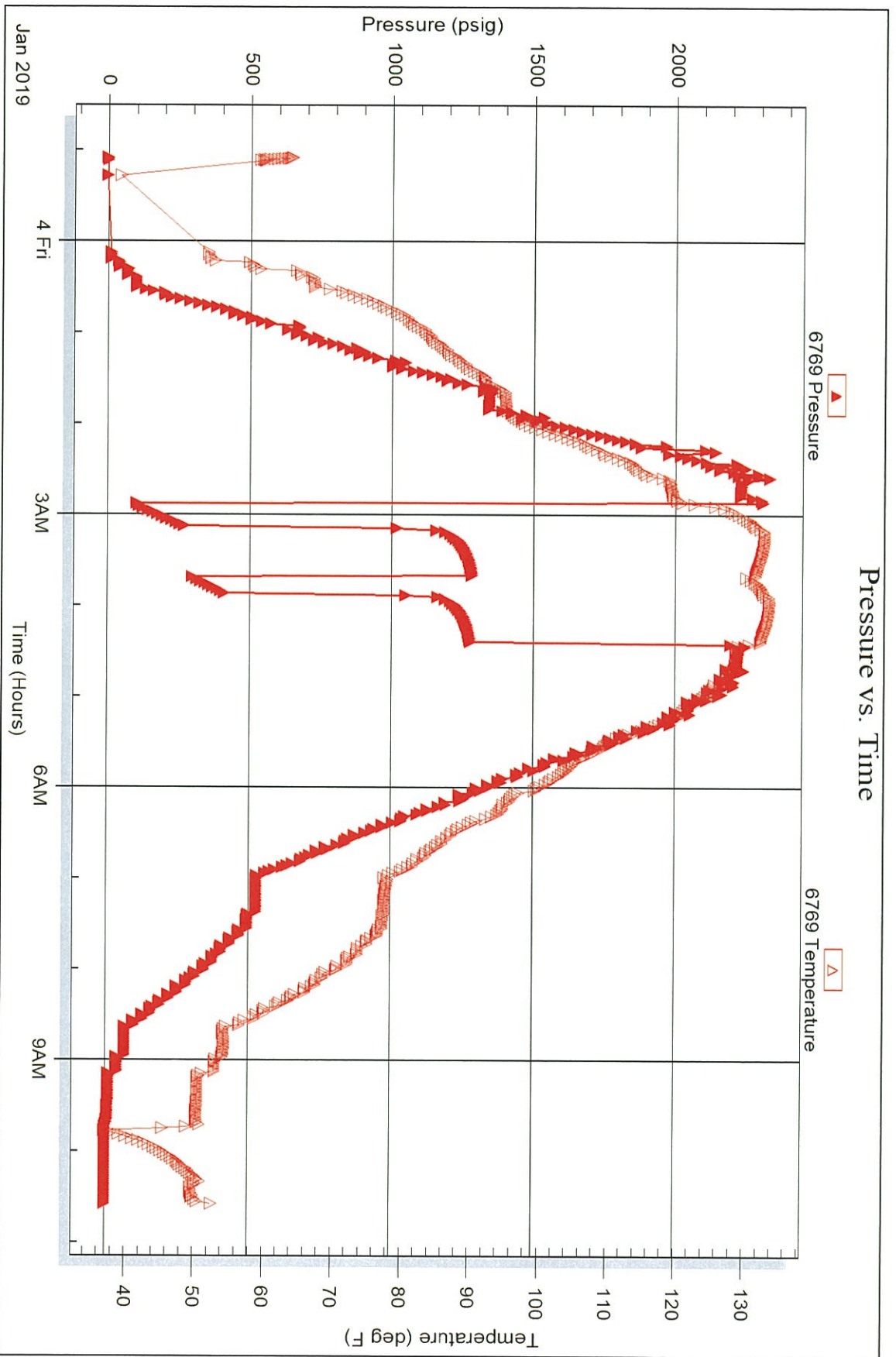
Serial #: 6769

Outside

Palomino Petroleum Inc

H2 #2

DST Test Number: 3

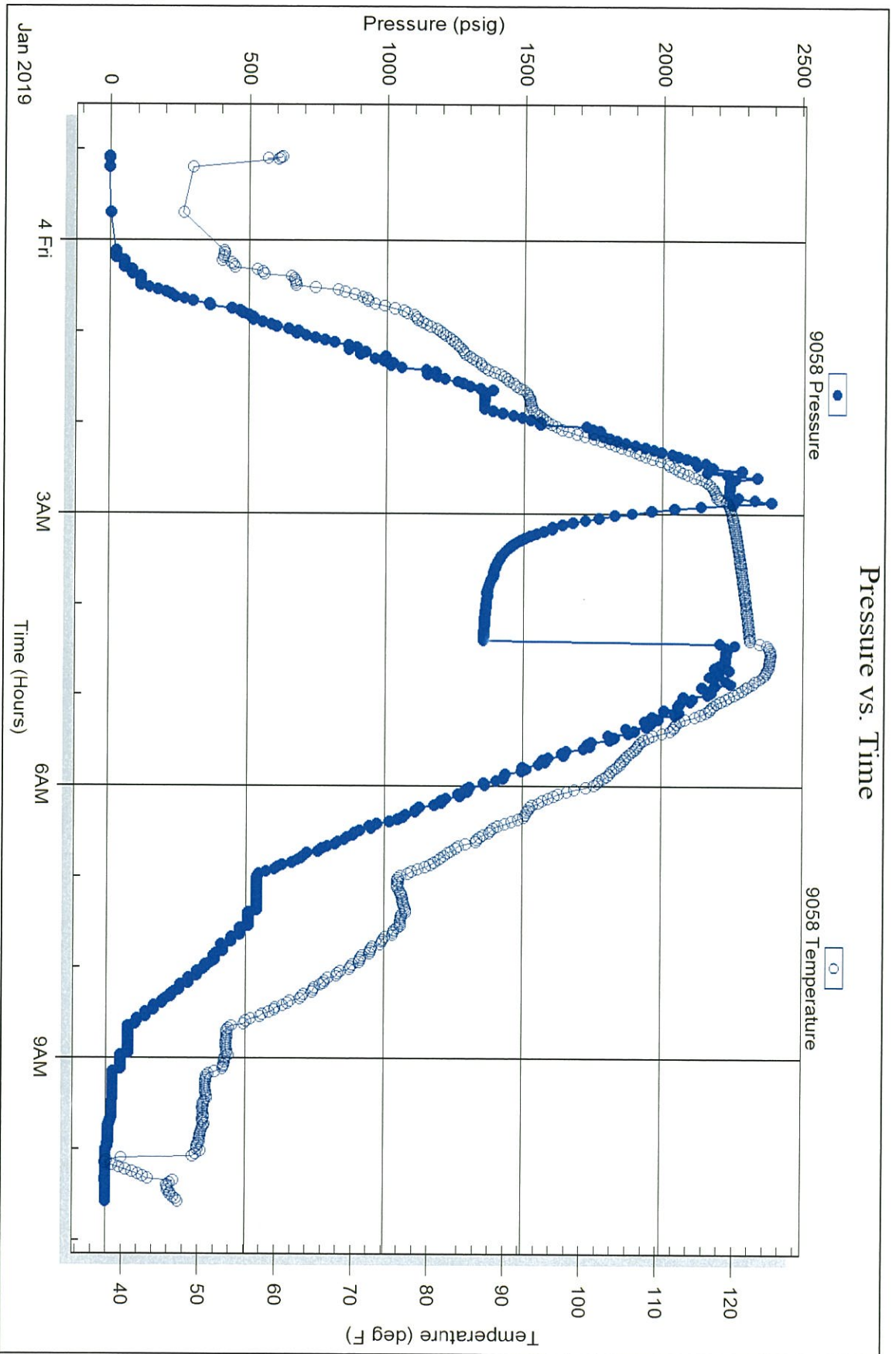


Serial #: 9058

Below (Straterra) Petroleum Inc

H2 #2

DST Test Number: 3





ING INC.
1515 Commerce Parkway • Hays, Kansas 67601

Test Ticket

NO. 57078

Well Name & No. A12 Unit #2 Test No. 1 Date 12/31/2015
 Company Palomino Petroleum Inc Elevation 2576 KB 2564 GL
 Address 4924 SE 84th St Newton KS 67114 18827
 Co. Rep / Geo. Ryan Seib Rig 29W #22
 Location: Sec. 8 Twp. 9S Rge. 25W Co. Neos State KS

Interval Tested 4260 - 4400' Zone Tested Marmaton
 Anchor Length 140' Drill Pipe Run 4136' Mud Wt. 9.5
 Top Packer Depth 4255' Drill Collars Run 115' Vis 7.5
 Bottom Packer Depth 4260' Wt. Pipe Run - WL 7.2
 Total Depth 4400' Chlorides 5800 ppm System LCM 2H

Blow Description 17-BOB 7 mins, Built to 20"
15D-Work: Built to 1 1/4"
77-BOB 3 1/2 mins, Built to 40"
15D-Work: Built to 3/4"

Rec	Feet of	%gas	%oil	%water	%mud
110'	MCO	90		10	
90'	MCO	50	50		
	700' JAP	100			

Rec Total 200' BHT 115° Gravity 40° API RW - @ - °F Chlorides - ppm

- (A) Initial Hydrostatic 2214
- (B) First Initial Flow 74
- (C) First Final Flow 105
- (D) Initial Shut-In 942
- (E) Second Initial Flow 88
- (F) Second Final Flow 114
- (G) Final Shut-In 864
- (H) Final Hydrostatic 2165

- Test 1150
- Jars 250
- Safety Joint 75
- Circ Sub
- Hourly Standby x7 5hr 400
- Mileage 172x4 184
- Sampler 92rt x 2
- Straddle
- Shale Packer
- Extra Packer
- Extra Recorder
- Day Standby x1
- Accessibility
- Sub Total 2059

T-On Location 09:40 12/31/2015 - 01/01/2016
 T-Started 02:46
 T-Open 11:10
 T-Pulled 13:20
 T-Out 17:40
 Comments _____
 Ruined Shale Packer
 Ruined Packer
 Extra Copies
 Sub Total 0
 Total 2059
 MP/DST Disc't _____

Initial Open 30
 Initial Shut-In 30
 Final Flow 30
 Final Shut-In 30

Approved By _____ Our Representative Spencer J. Steal Thanks!

Trilobite Testing Inc. shall not be liable for damaged of any kind of the property or personnel of the one for whom a test is made, or for any loss suffered or sustained, directly or indirectly, through the use of its equipment, or its statements or opinion concerning the results of any test, tools lost or damaged in the hole shall be paid for at cost by the party for whom the test is made.

785-259-0056



TRILOBITE TESTING INC.

1515 Commerce Parkway • Hays, Kansas 67601

Test Ticket

NO. 57079

Well Name & No. 42 Unit #2 Test No. 2 Date 01/02/2019
 Company Palomino Petroleum Inc Elevation 2576 KB 2564 GL
 Address 4924 SE 84th St Newton KS 67114 +8827
 Co. Rep / Geo. Ryan Seib Rig 9WW #22
 Location: Sec. 8 Twp. 9S Rge. 25W Co. Neos State KS

Interval Tested 4544' - 4555' Zone Tested Mississippi
 Anchor Length 11' Drill Pipe Run 4422' Mud Wt. 9.2
 Top Packer Depth 4539' Drill Collars Run 115' Vis 68
 Bottom Packer Depth 4544' Wt. Pipe Run - WL 8.1
 Total Depth 4555' Chlorides 4200 ppm System LCM 2H

Blow Description 77- BOB 2 mins, Built to 33"
78- Weak, Built to 5"
79- BOB 3 1/2 mins Built to 20"
75- Weak, Built to 5"

Rec	Feet of	Material	%gas	%oil	%water	%mud
<u>60</u>	<u>200'</u>	<u>HMCO</u>	<u>65</u>		<u>35</u>	
<u>40</u>	<u>110</u>		<u>60</u>	<u>40</u>		
<u>30</u>	<u>300'</u>	<u>MOP</u>				

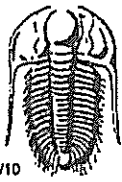
Rec Total 600 BHT 124° Gravity 37° API RW - @ - °F Chlorides - ppm

(A) Initial Hydrostatic <u>2346</u>	<input checked="" type="checkbox"/> Test <u>1150</u>	T-On Location <u>14:10</u>
(B) First Initial Flow <u>48</u>	<input checked="" type="checkbox"/> Jars <u>250</u>	T-Started <u>15:55</u>
(C) First Final Flow <u>135</u>	<input checked="" type="checkbox"/> Safety Joint <u>75</u>	T-Open <u>19:33</u>
(D) Initial Shut-In <u>1155</u>	<input type="checkbox"/> Circ Sub	T-Pulled <u>21:03</u>
(E) Second Initial Flow <u>144</u>	<input checked="" type="checkbox"/> Hourly Standby <u>X1</u>	T-Out <u>00:25</u> <u>01/03/2019</u>
(F) Second Final Flow <u>200</u>	<input checked="" type="checkbox"/> Mileage <u>172 RT</u> <u>92rt</u>	Comments
(G) Final Shut-In <u>1096</u>	<input type="checkbox"/> Sampler	
(H) Final Hydrostatic <u>2281</u>	<input type="checkbox"/> Straddle	<input type="checkbox"/> Ruined Shale Packer
Initial Open <u>15</u>	<input type="checkbox"/> Shale Packer	<input type="checkbox"/> Ruined Packer
Initial Shut-In <u>30</u>	<input type="checkbox"/> Extra Packer	<input type="checkbox"/> Extra Copies
Final Flow <u>15</u>	<input type="checkbox"/> Extra Recorder	Sub Total <u>0</u>
Final Shut-In <u>30</u>	<input type="checkbox"/> Day Standby	Total <u>1567</u>
	<input type="checkbox"/> Accessibility	MP/DST Disc't
	Sub Total <u>1567</u>	

Approved By _____ Our Representative Spencer J. Stoltz Thanks!

Trilobite Testing Inc. shall not be liable for damaged of any kind of the property or personnel of the one for whom a test is made, or for any loss suffered or sustained, directly or indirectly, through the use of its equipment, or its statements or opinion concerning the results of any test, tools lost or damaged in the hole shall be paid for at cost by the party for whom the test is made.

785-259-0056



TRILOBITE TESTING INC.

1515 Commerce Parkway • Hays, Kansas 67601

Test Ticket

NO. 64980

Well Name & No. H2 Unit #2 Test No. 3 Date 1-4-2019
 Company Palomine Petroleum Elevation 2576 KB 2564 GL
 Address 4924 SE 84th St Newton KS 67114 + 8827
 Co. Rep / Geo. Ryan Seib Rig W.W. #22
 Location: Sec. 8 Twp 9S Rge. 25W Co. Neos State Ks

Interval Tested 4556' - 4576' Zone Tested M.SS
 Anchor Length 20' Drill Pipe Run 4545' Mud Wt. 9.4
 Top Packer Depth 4551' Drill Collars Run 115' Vls 48
 Bottom Packer Depth 4556' Wt. Pipe Run — WL 9.2
 Total Depth 4675' Chlorides 5300 ppm System LCM 2#

Blow Description IF - BOB 2mins 45 sec total build of 60"
ISI - 4" of blow back
FF - BOB 3mins 15 seconds total build of 40"
ISI - 2" of blow back

Rec	Feet of	%gas	%oil	%water	%mud
<u>934'</u>	<u>6.0</u>	<u>70</u>	<u>80</u>		
<u>120'</u>	<u>6 D.L.W.M</u>	<u>10</u>	<u>10</u>	<u>30</u>	<u>50</u>
<u>6FP 120'</u>					

Rec Total 1054 BHT 129° Gravity _____ API RW _____ @ _____ °F Chlorides _____ ppm

(A) Initial Hydrostatic 2379 Test 1150 T-On Location 9:45
 (B) First Initial Flow 93 Jars 250 T-Started 11:05
 (C) First Final Flow 280 Safety Joint 75 T-Open 2:52
 (D) Initial Shut-In 1286 Circ Sub _____ T-Pulled 4:22
 (E) Second Initial Flow 293 Hourly Standby 1.5h 120 T-Out 2:34
 (F) Second Final Flow 422 Mileage 92 mi RT 92 Comments _____
 (G) Final Shut-In 1279 Sampler _____
 (H) Final Hydrostatic 2279 Straddle 600 EM Tool _____
 Shale Packer 250 Ruined Shale Packer _____
 Extra Packer _____ Ruined Packer _____
 Extra Recorder _____ Extra Copies _____
 Day Standby _____ Sub Total 0
 Accessibility _____ Total 2537
 Sub Total 2537 MP/DST Disc't _____

Approved By _____ Our Representative Benny Mulligan

Trilobite Testing Inc. shall not be liable for damaged of any kind of the property or personnel of the one for whom a test is made, or for any loss suffered or sustained, directly or indirectly, through the use of its equipment, or its statements or opinion concerning the results of any test, tools lost or damaged in the hole shall be paid for at cost by the party for whom the test is made.