



DRILL STEM TEST REPORT

Prepared For: **Edison Operating Company LLC**

8100 E.22nd st N.Bldg. 1900
Wichita,Kansas 67226-2319

ATTN: Derek Patterson

O'connor #1-8

8-24s-12w Stafford

Start Date: 2019.05.23 @ 17:19:00

End Date: 2019.05.23 @ 01:30:00

Job Ticket #: 01362 DST #: 1

Eagle Testers
1309 Patton Road Great Bend, Kansas 67530
620-791-7394

Printed: 2019.05.24 @ 02:00:12

Edison Operating Company LLC
8-24s-12w Stafford
O'connor #1-8
DST # 1
viola
2019.05.23



DRILL STEM TEST REPORT

Edison Operating Company LLC

8-24s-12w Stafford

8100 E.22nd st N.Bldg. 1900
Wichita, Kansas 67226-2319

O'connor #1-8

ATTN: Derek Patterson

Job Ticket: 01362

DST#: 1

Test Start: 2019.05.23 @ 17:19:00

GENERAL INFORMATION:

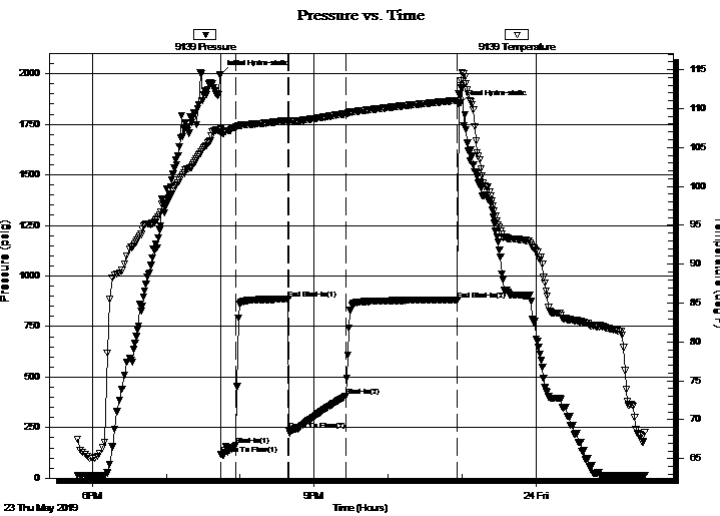
Formation: **viola**
 Deviated: No Whipstock: ft (KB)
 Test Type: Conventional Bottom Hole (Initial)
 Time Tool Opened: 19:45:00 Tester: Gene Budig
 Time Test Ended: 01:30:00 Unit No: 1
 Interval: **3806.00 ft (KB) To 3887.00 ft (KB) (TVD)** Reference Elevations: 1895.00 ft (KB)
 Total Depth: 3887.00 ft (KB) (TVD) 1885.00 ft (CF)
 Hole Diameter: 7.88 inches Hole Condition: Fair KB to GR/CF: 10.00 ft

Serial #: 9139

Outside

Press@RunDepth: 882.51 psig @ 3882.05 ft (KB) Capacity: 5000.00 psig
 Start Date: 2019.05.23 End Date: 2019.05.24 Last Calib.: 1899.12.30
 Start Time: 17:46:00 End Time: 01:28:29 Time On Btm: 2019.05.23 @ 19:44:00
 Time Off Btm: 2019.05.23 @ 22:57:30

TEST COMMENT: 1st Opening 10 Minutes Fair blow built to the bottom of a 5 gallon bucket in 4 minutes
 1st Shut-In 45 Minutes no blow back
 2nd Opening 45 Minutes Fair blow built to the bottom of a 5 gallon bucket in 4 minutes
 2nd Shut-In 90 Minutes no blow back



PRESSURE SUMMARY

Time (Min.)	Pressure (psig)	Temp (deg F)	Annotation
0	1995.73	107.34	Initial Hydro-static
1	116.84	106.92	Open To Flow (1)
13	162.62	107.59	Shut-In(1)
55	885.56	108.47	End Shut-In(1)
56	237.25	108.32	Open To Flow (2)
102	404.58	109.33	Shut-In(2)
193	882.51	111.06	End Shut-In(2)
194	1847.55	111.89	Final Hydro-static

Recovery

Length (ft)	Description	Volume (bbl)
100.00	slightly oil cut muddy w ater	1.40
0.00	5% Gas 5% Oil 50% Mud 40% Water	0.00
180.00	slightlyoil cut muddy w ater	2.52
0.00	2% Gas 3% Oil 40% Mud 45% Water	0.00
240.00	slightly oil cut muddy w ater	3.37
0.00	2%Gas 3%Oil 10%Mud 85%Water	0.00

Gas Rates

Choke (inches)	Pressure (psig)	Gas Rate (Mcf/d)



DRILL STEM TEST REPORT

Edison Operating Company LLC

8-24s-12w Stafford

8100 E.22nd st N.Bldg. 1900
Wichita, Kansas 67226-2319

O'connor #1-8

ATTN: Derek Patterson

Job Ticket: 01362

DST#: 1

Test Start: 2019.05.23 @ 17:19:00

GENERAL INFORMATION:

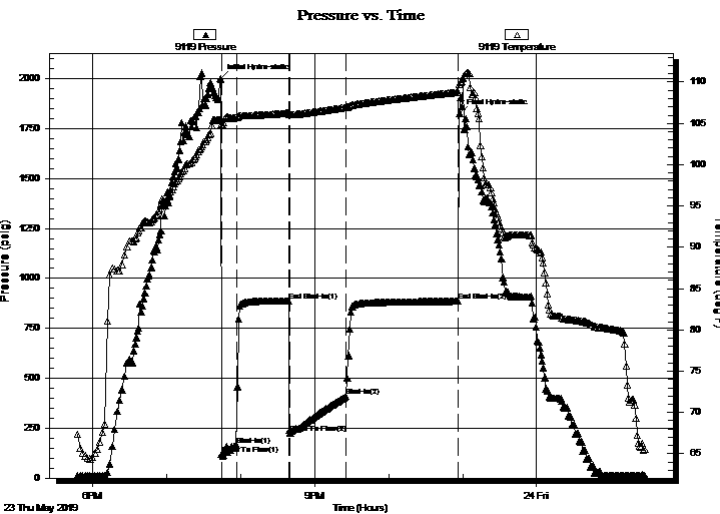
Formation: **viola**
 Deviated: No Whipstock: ft (KB)
 Test Type: Conventional Bottom Hole (Initial)
 Time Tool Opened: 19:45:00
 Tester: Gene Budig
 Time Test Ended: 01:30:00
 Unit No: 1
 Interval: **3806.00 ft (KB) To 3887.00 ft (KB) (TVD)**
 Reference Elevations: 1895.00 ft (KB)
 Total Depth: 3887.00 ft (KB) (TVD)
 1885.00 ft (CF)
 Hole Diameter: 7.88 inches Hole Condition: Fair
 KB to GR/CF: 10.00 ft

Serial #: 9119

Inside

Press@RunDepth: 885.36 psig @ 3882.05 ft (KB) Capacity: 5000.00 psig
 Start Date: 2019.05.23 End Date: 2019.05.24 Last Calib.: 1899.12.30
 Start Time: 17:46:00 End Time: 01:28:00 Time On Btm: 2019.05.23 @ 19:44:00
 Time Off Btm: 2019.05.23 @ 22:57:30

TEST COMMENT: 1st Opening 10 Minutes Fair blow built to the bottom of a 5 gallon bucket in 4 minutes
 1st Shut-In 45 Minutes no blow back
 2nd Opening 45 Minutes Fair blow built to the bottom of a 5 gallon bucket in 4 minutes
 2nd Shut-In 90 Minutes no blow back



PRESSURE SUMMARY

Time (Min.)	Pressure (psig)	Temp (deg F)	Annotation
0	1998.49	105.40	Initial Hydro-static
1	119.50	104.86	Open To Flow (1)
13	164.97	105.66	Shut-In(1)
55	888.54	106.27	End Shut-In(1)
56	226.28	106.07	Open To Flow (2)
102	409.24	106.94	Shut-In(2)
193	885.36	108.78	End Shut-In(2)
194	1825.65	109.67	Final Hydro-static

Recovery

Length (ft)	Description	Volume (bbl)
100.00	slightly oil cut muddy w ater	1.40
0.00	5% Gas 5% Oil 50% Mud 40% Water	0.00
180.00	slightlyoil cut muddy w ater	2.52
0.00	2% Gas 3% Oil 40% Mud 45% Water	0.00
240.00	slightly oil cut muddy w ater	3.37
0.00	2%Gas 3%Oil 10%Mud 85%Water	0.00

Gas Rates

	Choke (inches)	Pressure (psig)	Gas Rate (Mcf/d)



DRILL STEM TEST REPORT

TOOL DIAGRAM

Edison Operating Company LLC

8-24s-12w Stafford

8100 E.22nd st N.Bldg. 1900
Wichita, Kansas 67226-2319

O'connor #1-8

Job Ticket: 01362

DST#: 1

ATTN: Derek Patterson

Test Start: 2019.05.23 @ 17:19:00

Tool Information

Drill Pipe:	Length: 3807.00 ft	Diameter: 3.80 inches	Volume: 53.40 bbl	Tool Weight:	2000.00 lb
Heavy Wt. Pipe:	Length: 0.00 ft	Diameter: 0.00 inches	Volume: 0.00 bbl	Weight set on Packer:	20000.00 lb
Drill Collar:	Length: 0.00 ft	Diameter: 0.00 inches	Volume: 0.00 bbl	Weight to Pull Loose:	68000.00 lb
			<u>Total Volume: 53.40 bbl</u>	Tool Chased	0.00 ft
Drill Pipe Above KB:	31.00 ft			String Weight: Initial	46000.00 lb
Depth to Top Packer:	3806.00 ft			Final	52000.00 lb
Depth to Bottom Packer:	ft				
Interval between Packers:	81.05 ft				
Tool Length:	111.05 ft				
Number of Packers:	2	Diameter: 6.75 inches			

Tool Comments:

Tool Description	Length (ft)	Serial No.	Position	Depth (ft)	Accum. Lengths
------------------	-------------	------------	----------	------------	----------------

Shut In Tool	5.00			3781.00	
Hydraulic tool	5.00			3786.00	
Jars	5.00			3791.00	
Safety Joint	5.00			3796.00	
Packer	5.00			3801.00	30.00 Bottom Of Top Packer
Packer	5.00		Fluid	3806.00	
Anchor	0.00			3806.00	
Change Over Sub	0.75			3806.75	
Drill Pipe	63.55			3870.30	
Change Over Sub	0.75		Inside	3871.05	
Anchor	11.00			3882.05	
Recorder	0.00	9119	Inside	3882.05	
Recorder	0.00	9139	Outside	3882.05	
Bullnose	5.00			3887.05	81.05 Bottom Packers & Anchor

Total Tool Length: 111.05



DRILL STEM TEST REPORT

FLUID SUMMARY

Edison Operating Company LLC

8-24s-12w Stafford

8100 E.22nd st N.Bldg. 1900
Wichita, Kansas 67226-2319

O'connor #1-8

Job Ticket: 01362

DST#: 1

ATTN: Derek Patterson

Test Start: 2019.05.23 @ 17:19:00

Mud and Cushion Information

Mud Type: Gel Chem
Mud Weight: 9.00 lb/gal
Viscosity: 51.00 sec/qt
Water Loss: 11.99 in³
Resistivity: ohm.m
Salinity: 11200.00 ppm
Filter Cake: 1.00 inches

Cushion Type:
Cushion Length: ft
Cushion Volume: bbl
Gas Cushion Type:
Gas Cushion Pressure: psig

Oil API: deg API
Water Salinity: 42000 ppm

Recovery Information

Recovery Table

Length ft	Description	Volume bbl
100.00	slightly oil cut muddy w ater	1.403
0.00	5% Gas 5% Oil 50% Mud 40% Water	0.000
180.00	slightlyoil cut muddy w ater	2.525
0.00	2% Gas 3% Oil 40% Mud 45% Water	0.000
240.00	slightly oil cut muddy w ater	3.367
0.00	2%Gas 3%Oil 10%Mud 85%Water	0.000
180.00	very slightly oil & gas cut muddy w ater	2.525
0.00	2%Gas 2%Oil 8%Mud 88%Water	0.000
0.00	chlorides 42000	0.000

Total Length: 700.00 ft Total Volume: 9.820 bbl

Num Fluid Samples: 0

Num Gas Bombs: 0

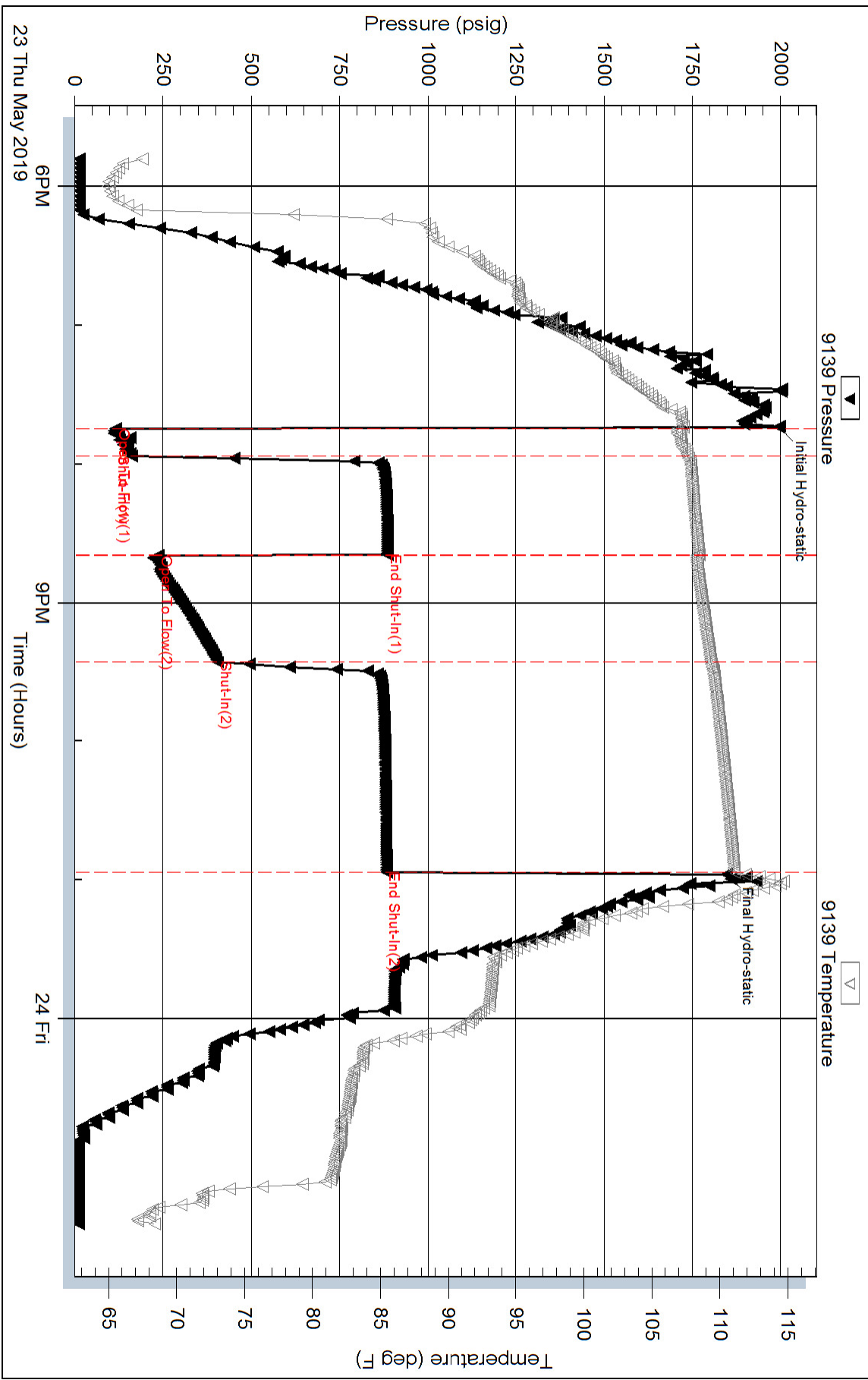
Serial #:

Laboratory Name:

Laboratory Location:

Recovery Comments:

Pressure vs. Time



Pressure vs. Time

