



DRILL STEM TEST REPORT

Prepared For: **Younger Energy Company**

9415 E. Harry Ste 403 bldg400
Wichita ,Kansas 67207

ATTN: keith Reavis

Jarbo "A" # @

25-26s-14w Pratt

Start Date: 2019.04.26 @ 05:24:00

End Date: 2019.04.26 @ 00:00:00

Job Ticket #: 01358 DST #: 1

Eagle Testers
1309 Patton Road Great Bend, Kansas 67530
620-791-7394

Printed: 2019.04.26 @ 12:15:30

Younger Energy Company
25-26s-14w Pratt
Jarbo "A" # @
DST # 1
Lansing "B"
2019.04.26



DRILL STEM TEST REPORT

Younger Energy Company

25-26s-14w Pratt

9415 E. Harry Ste 403 bldg400
Wichita ,Kansas 67207

Jarbo "A" # @

Job Ticket: 01358

DST#: 1

ATTN: Keith Reavis

Test Start: 2019.04.26 @ 05:24:00

GENERAL INFORMATION:

Formation: **Lansing "B"**

Deviated: No Whipstock: ft (KB)

Time Tool Opened: 07:25:00

Time Test Ended: 00:00:00

Test Type: Conventional Bottom Hole (Initial)

Tester: Gene Budig

Unit No: 1

Interval: **3844.00 ft (KB) To 3870.00 ft (KB) (TVD)**

Reference Elevations: 1979.00 ft (KB)

Total Depth: 3870.00 ft (KB) (TVD)

1967.00 ft (CF)

Hole Diameter: 7.88 inches Hole Condition: Fair

KB to GR/CF: 12.00 ft

Serial #: 9119

Press@RunDepth: 1100.41 psig @ ft (KB)

Capacity: psig

Start Date: 2019.04.26

End Date: 2019.04.26

Last Calib.: 1899.12.30

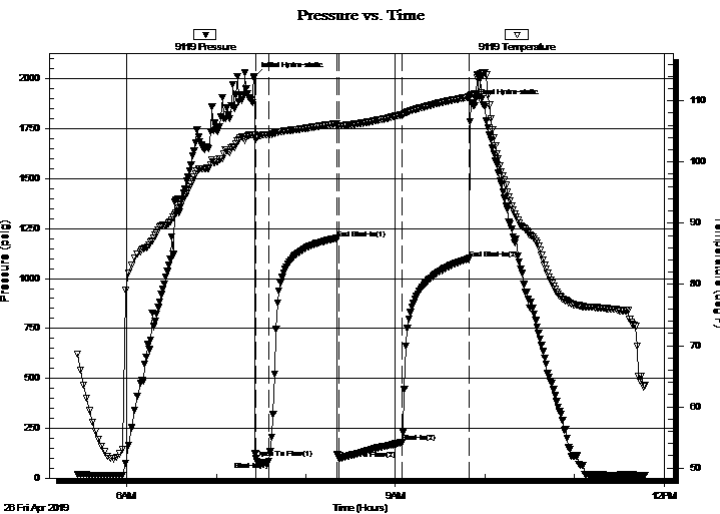
Start Time: 05:24:00

End Time: 11:47:30

Time On Btm: 2019.04.26 @ 07:25:30

Time Off Btm: 2019.04.26 @ 09:51:00

TEST COMMENT: 1st Opening 10 Minutes good blow built to the bottom of the bucket in 1 minute
1st Shut-In 45 Minutes fair blow back
2ndn Opening 45 Minutes same as 1st gas to surface on the final shut-in
2nd Shut-In 45 minutes fair blow back



PRESSURE SUMMARY

Time (Min.)	Pressure (psig)	Temp (deg F)	Annotation
0	2010.96	104.44	Initial Hydro-static
1	96.93	103.88	Open To Flow (1)
10	83.44	104.49	Shut-In(1)
55	1201.00	106.28	End Shut-In(1)
57	96.64	105.93	Open To Flow (2)
99	179.46	107.75	Shut-In(2)
144	1100.41	110.63	End Shut-In(2)
146	1878.55	111.00	Final Hydro-static

Recovery

Length (ft)	Description	Volume (bbl)
120.00	60% GAS 26% OIL 8% MUD 6% WATER	1.68
60.00	14% gas 76% Oil 5% Mud 5% Water	0.84
120.00	10% Gas 5% Oil 8% Mud 77% w ater	1.68
0.00		0.00

Gas Rates

	Choke (inches)	Pressure (psig)	Gas Rate (Mcf/d)



DRILL STEM TEST REPORT

Younger Energy Company

25-26s-14w Pratt

9415 E. Harry Ste 403 bldg400
Wichita ,Kansas 67207

Jarbo "A" # @

Job Ticket: 01358

DST#: 1

ATTN: keith Reavis

Test Start: 2019.04.26 @ 05:24:00

GENERAL INFORMATION:

Formation: **Lansing "B"**

Deviated: No Whipstock: ft (KB)

Time Tool Opened: 07:25:00

Time Test Ended: 00:00:00

Test Type: Conventional Bottom Hole (Initial)

Tester: Gene Budig

Unit No: 1

Interval: **3844.00 ft (KB) To 3870.00 ft (KB) (TVD)**

Reference Elevations: 1979.00 ft (KB)

Total Depth: 3870.00 ft (KB) (TVD)

1967.00 ft (CF)

Hole Diameter: 7.88 inches Hole Condition: Fair

KB to GR/CF: 12.00 ft

Serial #: 9139

Press@RunDepth: 1098.11 psig @ ft (KB)

Capacity: psig

Start Date: 2019.04.26

End Date: 2019.04.26

Last Calib.: 1899.12.30

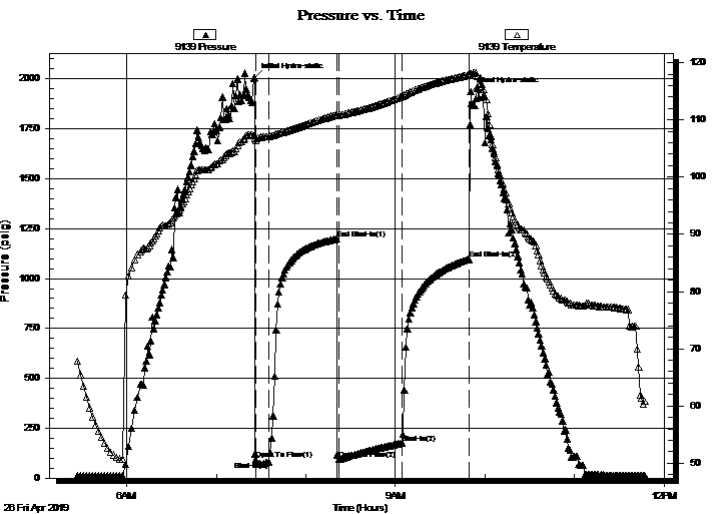
Start Time: 05:24:00

End Time: 11:47:30

Time On Btm: 2019.04.26 @ 07:25:30

Time Off Btm: 2019.04.26 @ 09:50:30

TEST COMMENT: 1st Opening 10 Minutes good blow built to the bottom of the bucket in 1 minute
1st Shut-In 45 Minutes fair blow back
2ndn Opening 45 Minutes same as 1st gas to surface on the final shut-in
2nd Shut-In 45 minutes fair blow back



PRESSURE SUMMARY

Time (Min.)	Pressure (psig)	Temp (deg F)	Annotation
0	2008.46	107.24	Initial Hydro-static
1	95.89	106.45	Open To Flow (1)
10	81.94	107.09	Shut-In(1)
55	1198.44	110.90	End Shut-In(1)
57	94.07	110.83	Open To Flow (2)
99	177.10	114.11	Shut-In(2)
144	1098.11	117.86	End Shut-In(2)
145	1935.77	118.09	Final Hydro-static

Recovery

Length (ft)	Description	Volume (bbl)
120.00	60% GAS 26% OIL 8% MUD 6% WATER	1.68
60.00	14% gas 76% Oil 5% Mud 5% Water	0.84
120.00	10% Gas 5% Oil 8% Mud 77% w ater	1.68
0.00		0.00

Gas Rates

Choke (inches)	Pressure (psig)	Gas Rate (Mcf/d)



DRILL STEM TEST REPORT

TOOL DIAGRAM

Younger Energy Company
 9415 E. Harry Ste 403 bldg400
 Wichita ,Kansas 67207
 ATTN: keith Reavis

25-26s-14w Pratt
Jarbo "A" # @
 Job Ticket: 01358 **DST#: 1**
 Test Start: 2019.04.26 @ 05:24:00

Tool Information

Drill Pipe:	Length: 3841.00 ft	Diameter: 3.80 inches	Volume: 53.88 bbl	Tool Weight:	2000.00 lb
Heavy Wt. Pipe:	Length: 0.00 ft	Diameter: 0.00 inches	Volume: 0.00 bbl	Weight set on Packer:	20000.00 lb
Drill Collar:	Length: 0.00 ft	Diameter: 0.00 inches	Volume: 0.00 bbl	Weight to Pull Loose:	68000.00 lb
			<u>Total Volume: 53.88 bbl</u>	Tool Chased	0.00 ft
Drill Pipe Above KB:	27.00 ft			String Weight: Initial	58000.00 lb
Depth to Top Packer:	3844.00 ft			Final	59000.00 lb
Depth to Bottom Packer:	ft				
Interval between Packers:	26.00 ft				
Tool Length:	56.00 ft				
Number of Packers:	2	Diameter: 6.75 inches			

Tool Comments:

Tool Description	Length (ft)	Serial No.	Position	Depth (ft)	Accum. Lengths
------------------	-------------	------------	----------	------------	----------------

Shut In Tool	5.00			3819.00	
Hydraulic tool	5.00			3824.00	
Jars	5.00			3829.00	
Safety Joint	5.00			3834.00	
Packer	5.00			3839.00	30.00 Bottom Of Top Packer
Packer	5.00		Fluid	3844.00	
Anchor	21.00			3865.00	
Recorder	0.00	9119	Inside	3865.00	
Recorder	0.00	9139	Outside	3865.00	
Bullnose	5.00			3870.00	26.00 Bottom Packers & Anchor
Total Tool Length:	56.00				



DRILL STEM TEST REPORT

FLUID SUMMARY

Younger Energy Company

25-26s-14w Pratt

9415 E. Harry Ste 403 bldg400
Wichita ,Kansas 67207

Jarbo "A" # @

Job Ticket: 01358

DST#: 1

ATTN: keith Reavis

Test Start: 2019.04.26 @ 05:24:00

Mud and Cushion Information

Mud Type: Gel Chem
Mud Weight: 9.00 lb/gal
Viscosity: 68.00 sec/qt
Water Loss: 7.20 in³
Resistivity: ohm.m
Salinity: 1200.00 ppm
Filter Cake: 1.00 inches

Cushion Type:
Cushion Length: ft
Cushion Volume: bbl
Gas Cushion Type:
Gas Cushion Pressure: psig

Oil API: deg API
Water Salinity: ppm

Recovery Information

Recovery Table

Length ft	Description	Volume bbl
120.00	60% GAS 26% OIL8% MUDM 6%WATER	1.683
60.00	14%gas 76%Oil 5% Mud 5% Water	0.842
120.00	10% Gas 5%Oil 8% Mud 77% w ater	1.683
0.00		0.000

Total Length: ft Total Volume: 4.208 bbl

Num Fluid Samples: 0

Num Gas Bombs: 0

Serial #:

Laboratory Name:

Laboratory Location:

Recovery Comments:

