



TRILOBITE TESTING, INC.

DRILL STEM TEST REPORT

Shakespeare Oil Co

12-17s-35w Wichita, KS

202 W Main St
Salem, IL 62881

MazanecCommunity1-12

ATTN: Vern Schrag

Job Ticket: 65236

DST#: 1

Test Start: 2019.07.04 @ 08:41:45

GENERAL INFORMATION:

Formation: **Lansing H**

Deviated: No Whipstock: ft (KB)

Time Tool Opened: 11:13:45

Time Test Ended: 16:03:45

Test Type: Conventional Bottom Hole (Initial)

Tester: Brandon Turley

Unit No: 79

Interval: 4237.00 ft (KB) To 4256.00 ft (KB) (TVD)

Reference Elevations: 3174.00 ft (KB)

Total Depth: 4256.00 ft (KB) (TVD)

3164.00 ft (CF)

Hole Diameter: 7.88 inches Hole Condition: Good

KB to GR/CF: 10.00 ft

Serial #: 8166 Outside

Press@RunDepth: 113.79 psig @ 4238.00 ft (KB)

Capacity: 8000.00 psig

Start Date: 2019.07.04

End Date:

2019.07.04

Last Calib.:

2019.07.04

Start Time:

08:41:50

End Time:

16:03:44

Time On Btm:

2019.07.04 @ 11:12:45

Time Off Btm:

2019.07.04 @ 14:00:15

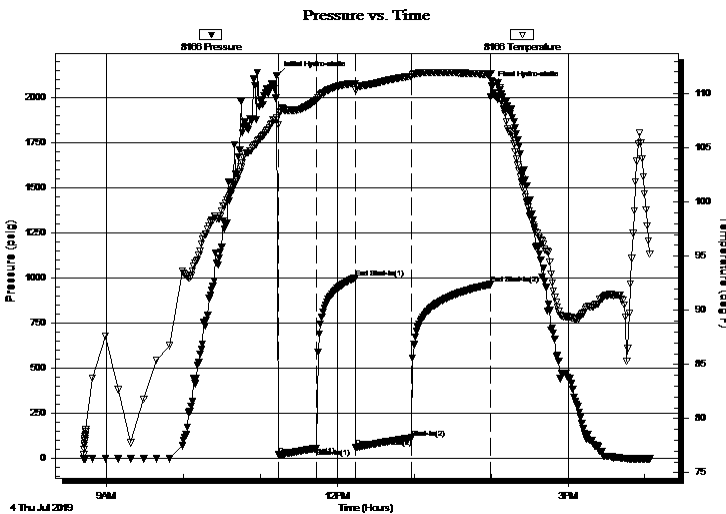
TEST COMMENT: IF: 3/4 blow built to 8 1/2.

IS: No return.

FF: Surface blow built to 9 3/4.

FS: No return.

PRESSURE SUMMARY



Time (Min.)	Pressure (psig)	Temp (deg F)	Annotation
0	2119.95	107.74	Initial Hydro-static
1	19.60	107.14	Open To Flow (1)
31	57.63	109.41	Shut-In(1)
61	1000.51	110.95	End Shut-In(1)
62	61.71	110.33	Open To Flow (2)
105	113.79	111.61	Shut-In(2)
167	963.90	111.76	End Shut-In(2)
168	2066.84	111.22	Final Hydro-static

Recovery

Length (ft)	Description	Volume (bbl)
126.00	mcw 80%w 20%m	1.77
94.00	nw oil spots 50%w 50%m	1.32
1.00	free oil 100%o	0.01

Gas Rates

Choke (inches)	Pressure (psig)	Gas Rate (Mcf/d)



TRILOBITE TESTING, INC.

DRILL STEM TEST REPORT

Shakespeare Oil Co

12-17s-35w Wichita, KS

202 W Main St
Salem, IL 62881

MazanecCommunity1-12

ATTN: Vern Schrag

Job Ticket: 65236

DST#: 1

Test Start: 2019.07.04 @ 08:41:45

GENERAL INFORMATION:

Formation: **Lansing H**

Deviated: No Whipstock: ft (KB)

Time Tool Opened: 11:13:45

Time Test Ended: 16:03:45

Test Type: Conventional Bottom Hole (Initial)

Tester: Brandon Turley

Unit No: 79

Interval: **4237.00 ft (KB) To 4256.00 ft (KB) (TVD)**

Total Depth: 4256.00 ft (KB) (TVD)

Hole Diameter: 7.88 inches Hole Condition: Good

Reference Elevations: 3174.00 ft (KB)

3164.00 ft (CF)

KB to GR/CF: 10.00 ft

Serial #: **6651** Inside

Press@RunDepth: psig @ 4238.00 ft (KB)

Start Date: 2019.07.04

End Date:

2019.07.04

Capacity: 8000.00 psig

Last Calib.:

2019.07.04

Start Time: 08:41:26

End Time:

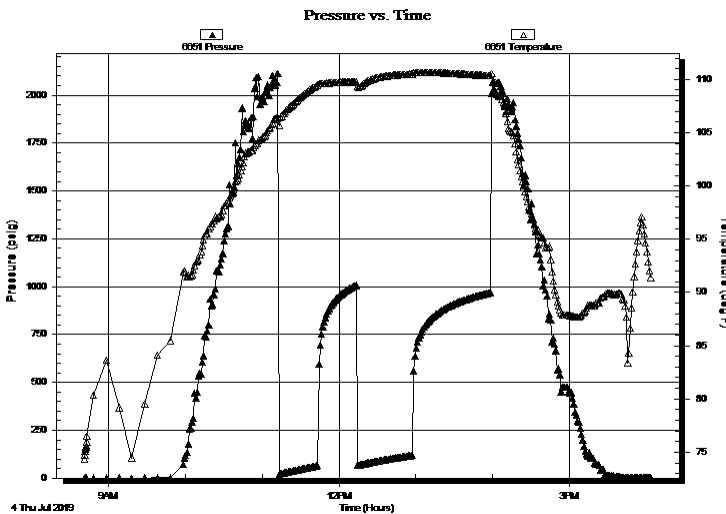
16:03:20

Time On Btm:

Time Off Btm:

TEST COMMENT: IF: 3/4 blow built to 8 1/2.
IS: No return.
FF: Surface blow built to 9 3/4.
FS: No return.

PRESSURE SUMMARY



Time (Min.)	Pressure (psig)	Temp (deg F)	Annotation

Recovery

Length (ft)	Description	Volume (bbl)
126.00	mcw 80%w 20%m	1.77
94.00	mw oil spots 50%w 50%m	1.32
1.00	free oil 100%o	0.01

Gas Rates

	Choke (inches)	Pressure (psig)	Gas Rate (Mcf/d)



**TRILOBITE
TESTING, INC.**

DRILL STEM TEST REPORT

FLUID SUMMARY

Shakespeare Oil Co

12-17s-35w Wichita, KS

202 W Main St
Salem, IL 62881

MazanecCommunity1-12

Job Ticket: 65236

DST#: 1

ATTN: Vern Schrag

Test Start: 2019.07.04 @ 08:41:45

Mud and Cushion Information

Mud Type: Gel Chem

Cushion Type:

Oil API:

0 deg API

Mud Weight: 9.00 lb/gal

Cushion Length:

ft

Water Salinity:

11000 ppm

Viscosity: 54.00 sec/qt

Cushion Volume:

bbbl

Water Loss: 7.20 in³

Gas Cushion Type:

Resistivity: 0.00 ohm.m

Gas Cushion Pressure:

psig

Salinity: 2700.00 ppm

Filter Cake: 1.00 inches

Recovery Information

Recovery Table

Length ft	Description	Volume bbl
126.00	mcw 80%w 20%m	1.767
94.00	mw oil spots 50%w 50%m	1.319
1.00	free oil 100%o	0.014

Total Length: 221.00 ft Total Volume: 3.100 bbl

Num Fluid Samples: 0

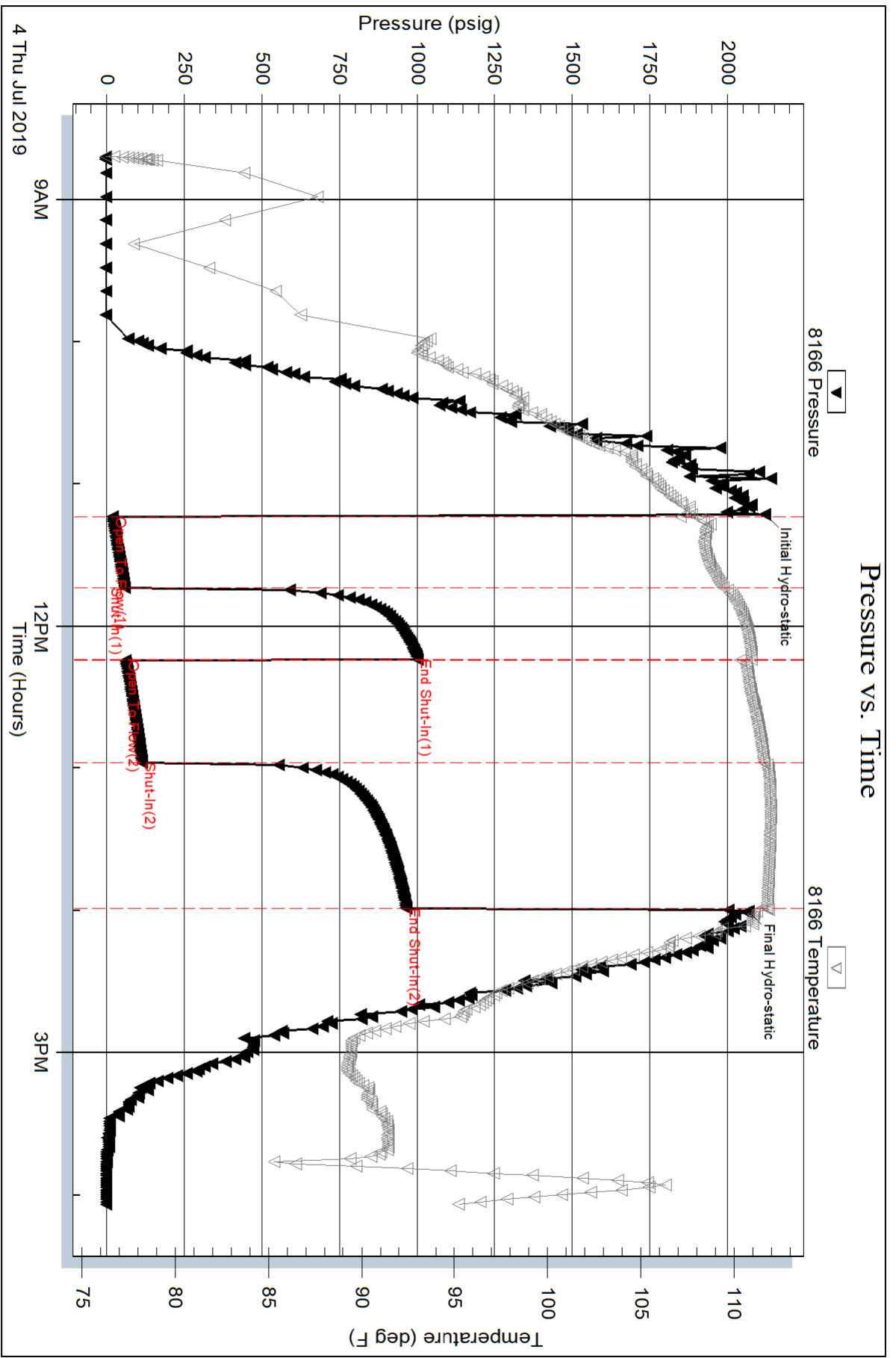
Num Gas Bombs: 0

Serial #:

Laboratory Name:

Laboratory Location:

Recovery Comments: .41@100=11000



Serial #: 6651

Inside

Shakespeare Oil Co

Mazanec Community 1-12

DST Test Number: 1

