

TRILOBITE TESTING, INC.

DRILL STEM TEST REPORT

Vincent Oil Corporation
 200 W. Douglas AVE #725
 Wichita, KS 67202
 ATTN: Ken LeBlanc

5 - 29S. - 22W Ford, KS
Imel - Rotz # 2-5
 Job Ticket: 63297 **DST#: 1**
 Test Start: 2019.05.26 @ 22:35:00

GENERAL INFORMATION:

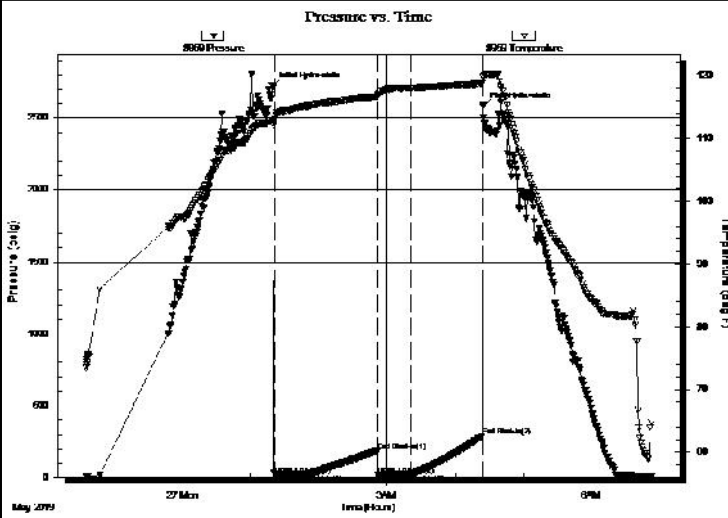
Formation: **Mississippian**
 Deviated: No Whipstock: ft (KB)
 Time Tool Opened: 01:21:10
 Time Test Ended: 06:53:50
 Interval: **5229.00 ft (KB) To 5240.00 ft (KB) (TVD)**
 Total Depth: 5240.00 ft (KB) (TVD)
 Hole Diameter: 7.88 inches Hole Condition: Good
 Test Type: Conventional Bottom Hole (Initial)
 Tester: Martine Salinas
 Unit No: 82
 Reference Elevations: 2516.00 ft (KB)
 2504.00 ft (CF)
 KB to GR/CF: 12.00 ft

Serial #: 8959

Inside

Press@RunDepth: 22.92 psig @ 5230.00 ft (KB)
 Start Date: 2019.05.26 End Date: 2019.05.27
 Start Time: 22:35:01 End Time: 06:53:50
 Capacity: 8000.00 psig
 Last Calib.: 2019.05.27
 Time On Btm: 2019.05.27 @ 01:19:40
 Time Off Btm: 2019.05.27 @ 04:24:39

TEST COMMENT: 30-IF-1/4" blow built to 4"
 60-ISI-No blow back
 30-FF-S.blow built to 3 1/4"
 60-FSI- No blow back



PRESSURE SUMMARY

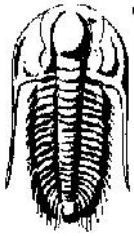
Time (Min.)	Pressure (psig)	Temp (deg F)	Annotation
0	2714.46	112.85	Initial Hydro-static
2	20.61	112.98	Open To Flow (1)
32	23.66	115.20	Shut-In(1)
92	187.80	116.70	End Shut-In(1)
93	21.53	116.99	Open To Flow (2)
122	22.92	118.10	Shut-In(2)
185	288.63	118.73	End Shut-In(2)
185	2581.43	119.73	Final Hydro-static

Recovery

Length (ft)	Description	Volume (bbl)
8.00	OSM 2%O, 98%M	0.11
0.00	Oil spots in tool	0.00
0.00	60' GIP	0.00

Gas Rates

	Choke (inches)	Pressure (psig)	Gas Rate (Mcf/d)



TRILOBITE TESTING, INC.

DRILL STEM TEST REPORT

Vincent Oil Corporation
 200 W. Douglas AVE #725
 Wichita, KS 67202
 ATTN: Ken LeBlanc

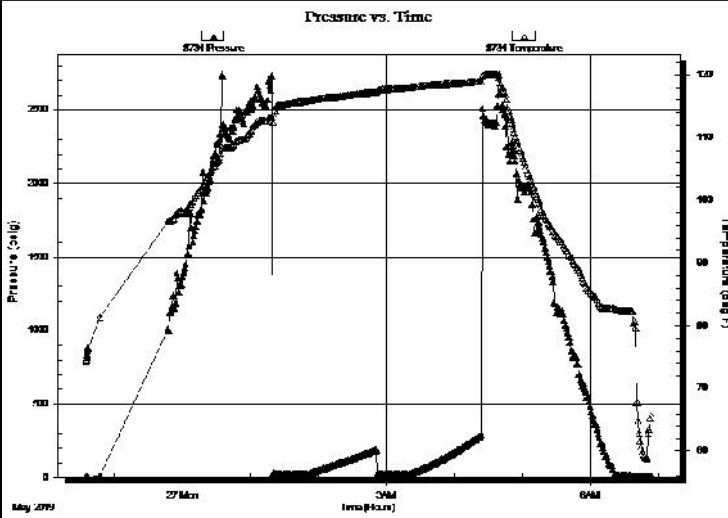
5 - 29S. - 22W Ford, KS
Imel - Rotz # 2-5
 Job Ticket: 63297 **DST#: 1**
 Test Start: 2019.05.26 @ 22:35:00

GENERAL INFORMATION:

Formation: **Mississippian**
 Deviated: No Whipstock: ft (KB)
 Time Tool Opened: 01:21:10
 Time Test Ended: 06:53:50
 Interval: **5229.00 ft (KB) To 5240.00 ft (KB) (TVD)**
 Total Depth: 5240.00 ft (KB) (TVD)
 Hole Diameter: 7.88 inches Hole Condition: Good
 Test Type: Conventional Bottom Hole (Initial)
 Tester: Martine Salinas
 Unit No: 82
 Reference Elevations: 2516.00 ft (KB)
 2504.00 ft (CF)
 KB to GR/CF: 12.00 ft

Serial #: 8734 Outside
 Press @ Run Depth: psig @ 5230.00 ft (KB) Capacity: 8000.00 psig
 Start Date: 2019.05.26 End Date: 2019.05.27 Last Calib.: 2019.05.27
 Start Time: 22:35:01 End Time: 06:54:00 Time On Btm:
 Time Off Btm:

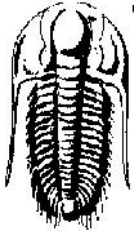
TEST COMMENT: 30-IF-1/4" blow built to 4"
 60-ISI-No blow back
 30-FF-S.blow built to 3 1/4"
 60-FSI- No blow back



PRESSURE SUMMARY			
Time (Min.)	Pressure (psig)	Temp (deg F)	Annotation

Recovery		
Length (ft)	Description	Volume (bbl)
8.00	OSM 2%O, 98%M	0.11
0.00	Oil spots in tool	0.00
0.00	60' GIP	0.00

Gas Rates			
	Choke (inches)	Pressure (psig)	Gas Rate (Mcf/d)



**TRILOBITE
TESTING, INC.**

DRILL STEM TEST REPORT

FLUID SUMMARY

Vincent Oil Corporation

5 - 29S. - 22W Ford, KS

200 W. Douglas AVE #725
Wichita, KS 67202

Imel - Rotz # 2-5

Job Ticket: 63297

DST#: 1

ATTN: Ken LeBlanc

Test Start: 2019.05.26 @ 22:35:00

Mud and Cushion Information

Mud Type: Gel Chem

Cushion Type:

Oil API:

deg API

Mud Weight: 9.00 lb/gal

Cushion Length:

ft

Water Salinity:

ppm

Viscosity: 54.00 sec/qt

Cushion Volume:

bbbl

Water Loss: 9.19 in³

Gas Cushion Type:

Resistivity: ohm.m

Gas Cushion Pressure:

psig

Salinity: 6000.00 ppm

Filter Cake: 1.00 inches

Recovery Information

Recovery Table

Length ft	Description	Volume bbbl
8.00	OSM 2%O, 98%M	0.112
0.00	Oil spots in tool	0.000
0.00	60' GIP	0.000

Total Length: 8.00 ft Total Volume: 0.112 bbl

Num Fluid Samples: 0

Num Gas Bombs: 0

Serial #:

Laboratory Name:

Laboratory Location:

Recovery Comments:

Serial #: 8959

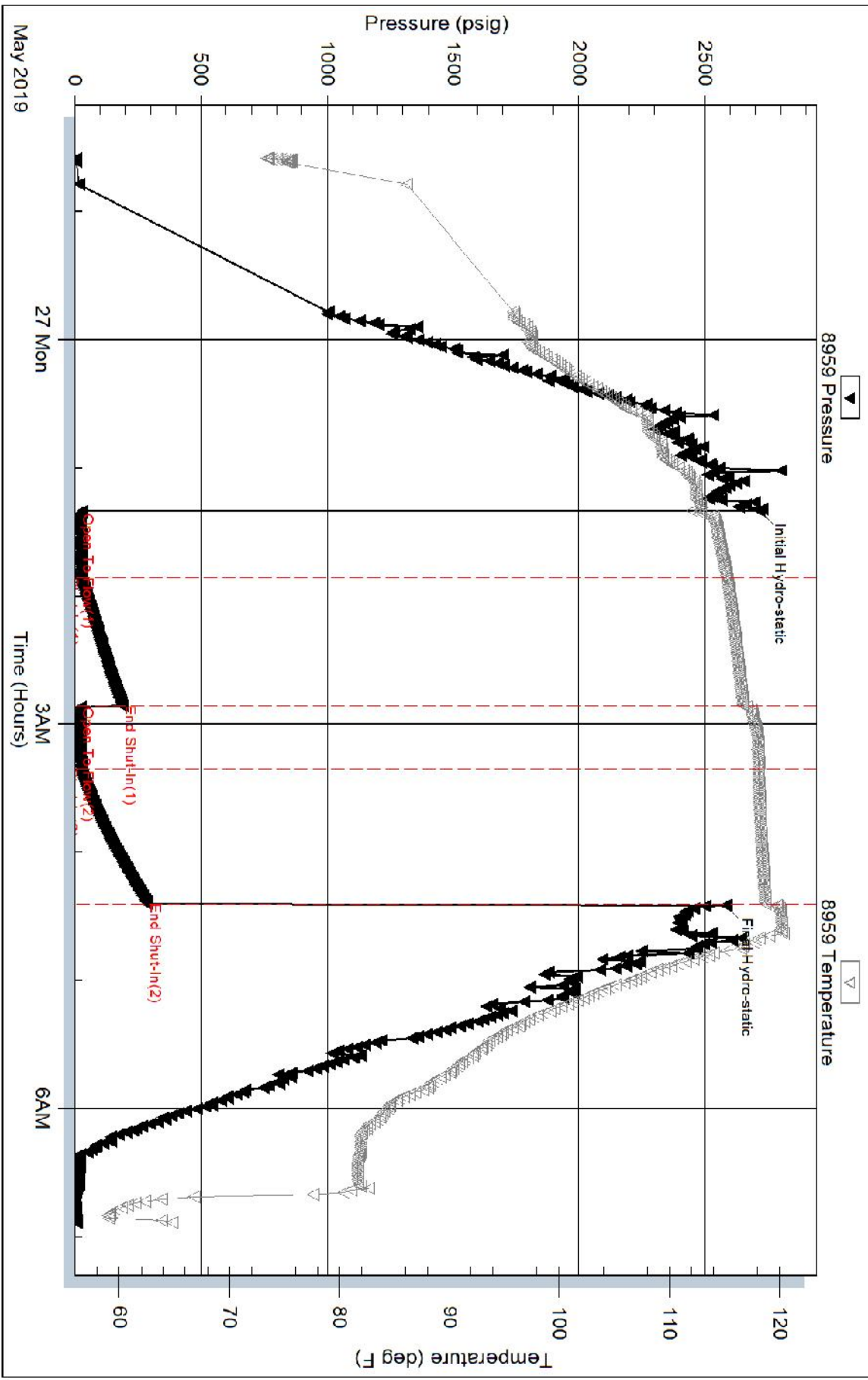
Inside

Vincent Oil Corporation

Inlet - Rotz # 2-5

DST Test Number: 1

Pressure vs. Time



Serial #: 8734

Outside Vincent Oil Corporation

Inlet - Rotz # 2-5

DST Test Number: 1

