



**TRILOBITE TESTING, INC.**

# DRILL STEM TEST REPORT

Shakespeare Oil Co

**28-14s-32w Logan Ks**

202 W Main St  
Salem, IL 62881

**Ottley 4-28**

Job Ticket: 65234

**DST#: 1**

ATTN: Tim Lauer

Test Start: 2019.06.25 @ 18:14:17

## GENERAL INFORMATION:

Formation: **Lansing A-B**

Deviated: No Whipstock: ft (KB)

Time Tool Opened: 21:12:47

Time Test Ended: 01:20:17

Test Type: Conventional Bottom Hole (Initial)

Tester: Brandon Turley

Unit No: 79

Interval: **3635.00 ft (KB) To 3695.00 ft (KB) (TVD)**

Reference Elevations: 2673.00 ft (KB)

Total Depth: 3695.00 ft (KB) (TVD)

2664.00 ft (CF)

Hole Diameter: 7.88 inches Hole Condition: Good

KB to GR/CF: 9.00 ft

**Serial #: 8166 Outside**

Press@RunDepth: 31.74 psig @ 3636.00 ft (KB)

Capacity: 8000.00 psig

Start Date: 2019.06.25 End Date: 2019.06.26

Last Calib.: 2019.06.26

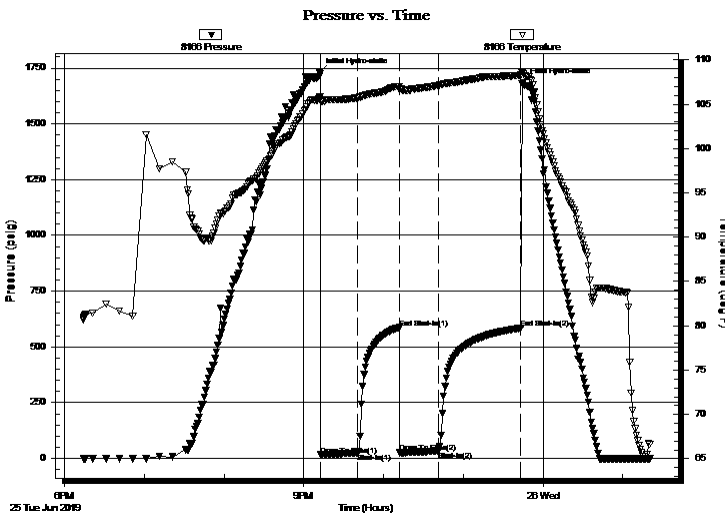
Start Time: 18:14:22 End Time: 01:20:16

Time On Btm: 2019.06.25 @ 21:11:47

Time Off Btm: 2019.06.25 @ 23:45:17

TEST COMMENT: IF: 1/2 blow built to 2 1/2.  
IS: No return.  
FF: 1/2 blow built to 1 1/4.  
FS: No return.

## PRESSURE SUMMARY



Time (Min.)	Pressure (psig)	Temp (deg F)	Annotation
0	1730.72	105.75	Initial Hydro-static
1	16.28	105.40	Open To Flow (1)
29	24.63	105.72	Shut-In(1)
60	586.88	107.02	End Shut-In(1)
61	25.48	106.62	Open To Flow (2)
90	31.74	107.10	Shut-In(2)
152	583.99	108.27	End Shut-In(2)
154	1683.55	108.38	Final Hydro-static

## Recovery

Length (ft)	Description	Volume (bbl)
40.00	w cm oil spots 5%w 95%m	0.56

## Gas Rates

	Choke (inches)	Pressure (psig)	Gas Rate (Mcf/d)





**TRILOBITE  
TESTING, INC.**

# DRILL STEM TEST REPORT

## FLUID SUMMARY

Shakespeare Oil Co

**28-14s-32w Logan Ks**

202 W Main St  
Salem, IL 62881

**Ottley 4-28**

Job Ticket: 65234

**DST#: 1**

ATTN: Tim Lauer

Test Start: 2019.06.25 @ 18:14:17

### Mud and Cushion Information

Mud Type: Gel Chem

Cushion Type:

Oil API:

0 deg API

Mud Weight: 9.00 lb/gal

Cushion Length:

ft

Water Salinity:

0 ppm

Viscosity: 53.00 sec/qt

Cushion Volume:

bbbl

Water Loss: 7.20 in<sup>3</sup>

Gas Cushion Type:

Resistivity: 0.00 ohm.m

Gas Cushion Pressure:

psig

Salinity: 1800.00 ppm

Filter Cake: 1.00 inches

### Recovery Information

Recovery Table

Length ft	Description	Volume bbl
40.00	wcm oil spots 5%w 95%m	0.561

Total Length: 40.00 ft      Total Volume: 0.561 bbl

Num Fluid Samples: 0

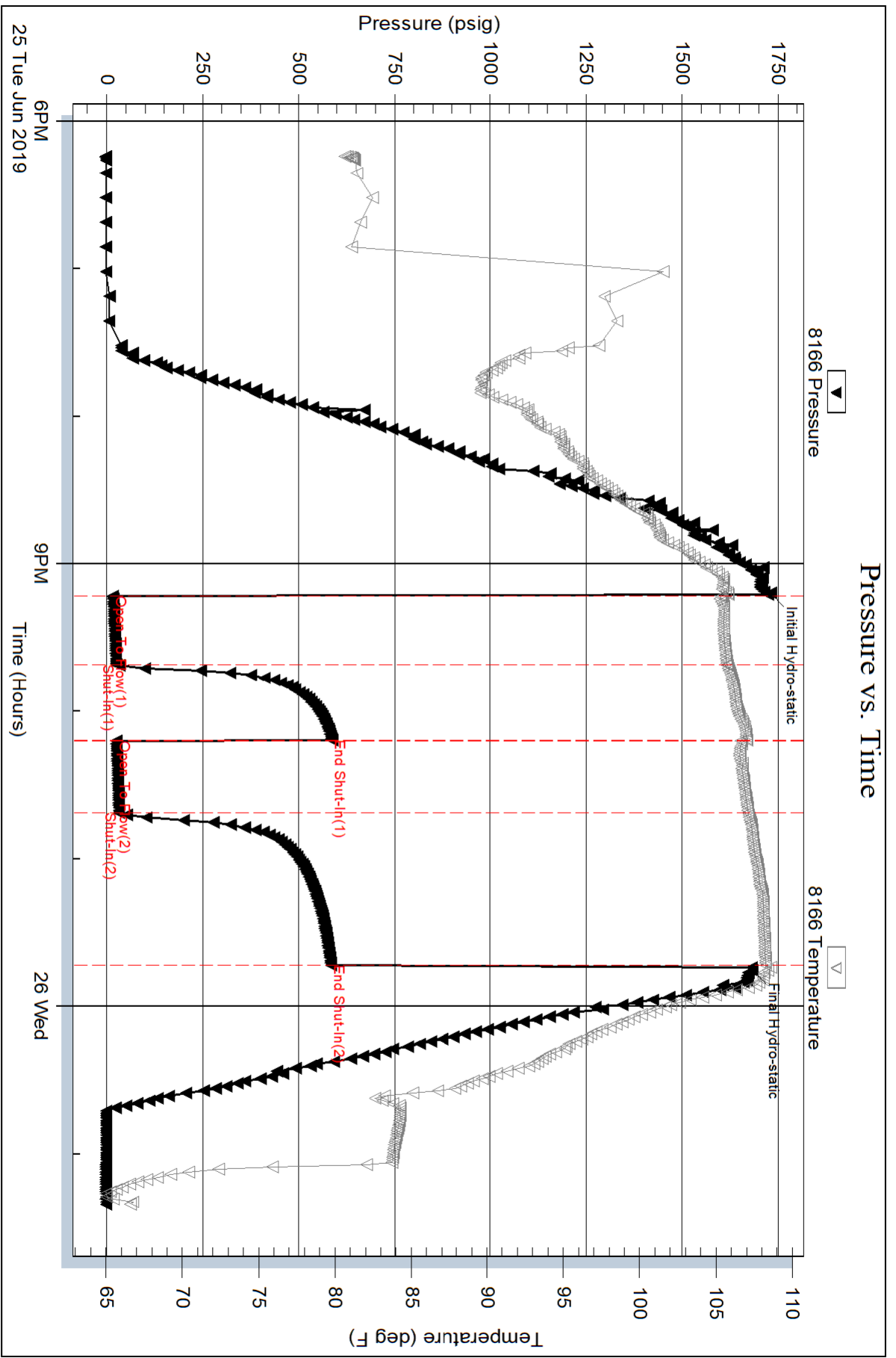
Num Gas Bombs: 0

Serial #:

Laboratory Name:

Laboratory Location:

Recovery Comments:



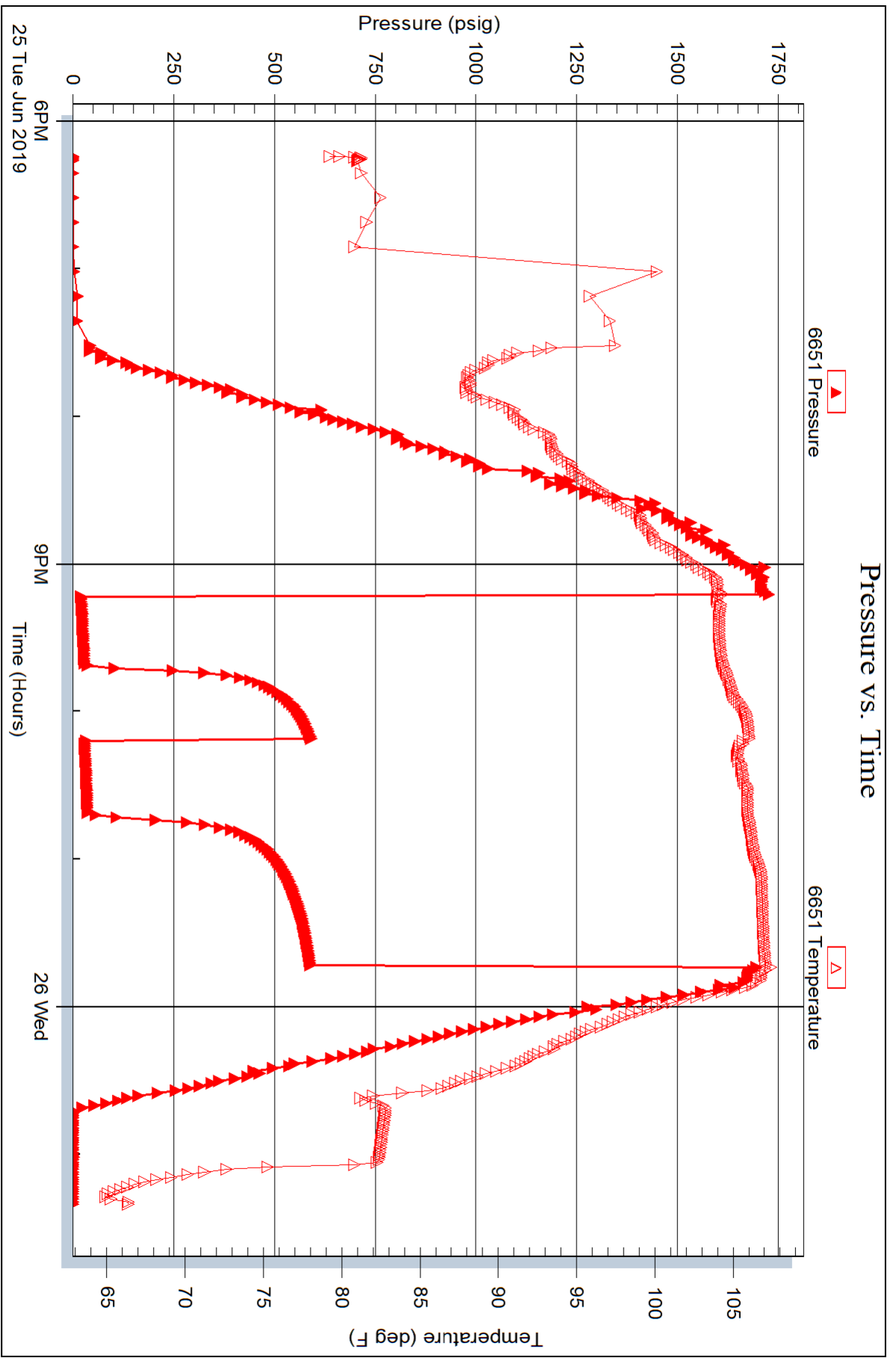
Serial #: 6651

Inside

Shakespeare Oil Co

Ottley 4-28

DST Test Number: 1



Triobite Testing, Inc

Ref. No: 65234

Printed: 2019.06.26 @ 06:05:54