



## DRILL STEM TEST REPORT

Prepared For: **Griffin, Charles N.**

PO Box 347  
Pratt, KS 67124

ATTN: Bruce Reed

**Addie #6**

**28-29s-15w Pratt,KS**

Start Date: 2019.06.26 @ 18:19:58

End Date: 2019.06.27 @ 02:23:43

Job Ticket #: 64928                      DST #: 1

Trilobite Testing, Inc  
1515 Commerce Parkway Hays, KS 67601  
ph: 785-625-4778 fax: 785-625-5620

Printed: 2019.06.27 @ 16:29:56

Griffin, Charles N.    28-29s-15w Pratt,KS    Addie #6    DST # 1    Viola    2019.06.26



**TRILOBITE  
TESTING, INC.**

## DRILL STEM TEST REPORT

Griffin, Charles N.

28-29s-15w Pratt, KS

PO Box 347  
Pratt, KS 67124

Addie #6

Job Ticket: 64928

DST#: 1

ATTN: Bruce Reed

Test Start: 2019.06.26 @ 18:19:58

### GENERAL INFORMATION:

Formation: **Viola**

Deviated: No Whipstock: ft (KB)

Time Tool Opened: 20:53:13

Time Test Ended: 02:23:43

Test Type: Conventional Bottom Hole (Initial)

Tester: Matt Smith

Unit No: 68

Interval: 4660.00 ft (KB) To 4690.00 ft (KB) (TVD)

Reference Elevations: 1987.00 ft (KB)

Total Depth: 4690.00 ft (KB) (TVD)

1977.00 ft (CF)

Hole Diameter: 7.88 inches Hole Condition: Fair

KB to GR/CF: 10.00 ft

Serial #: 8931

Inside

Press@RunDepth: 22.15 psig @ 4661.00 ft (KB)

Capacity: 8000.00 psig

Start Date: 2019.06.26

End Date:

2019.06.27

Last Calib.: 2019.06.27

Start Time: 18:20:03

End Time:

02:23:42

Time On Btm: 2019.06.26 @ 20:48:13

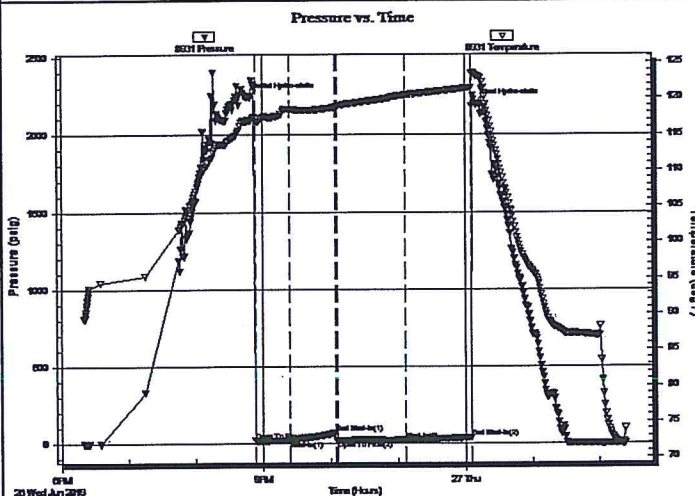
Time Off Btm: 2019.06.27 @ 00:09:13

TEST COMMENT: IF: Weak Surface Blow . Built to .10". Died off.

IS: No Blow .

FF: No Blow .

FSI: No Blow .



### PRESSURE SUMMARY

Time (Min.)	Pressure (psig)	Temp (deg F)	Annotation
0	2242.43	116.91	Initial Hydro-static
5	17.81	116.80	Open To Flow (1)
36	21.72	118.42	Shut-In(1)
76	67.64	118.68	End Shut-In(1)
78	21.00	118.80	Open To Flow (2)
139	22.15	120.39	Shut-In(2)
198	38.60	121.42	End Shut-In(2)
201	2203.86	123.20	Final Hydro-static

### Recovery

Length (ft)	Description	Volume (bbl)
10.00	DM 100% m	0.08

### Gas Rates

	Choke (inches)	Pressure (psig)	Gas Rate (Mcf/d)



**TRILOBITE TESTING, INC.**

**DRILL STEM TEST REPORT**

Griffin, Charles N.

**28-29s-15w Pratt, KS**

PO Box 347  
Pratt, KS 67124

**Addie #6**

Job Ticket: 64928

DST#: 1

ATTN: Bruce Reed

Test Start: 2019.06.26 @ 18:19:58

**GENERAL INFORMATION:**

Formation: **Viola**

Deviated: No Whipstock: ft (KB)

Time Tool Opened: 20:53:13

Time Test Ended: 02:23:43

Test Type: Conventional Bottom Hole (Initial)

Tester: Matt Smith

Unit No: 68

Interval: 4660.00 ft (KB) To 4690.00 ft (KB) (TVD)

Total Depth: 4690.00 ft (KB) (TVD)

Hole Diameter: 7.88 inches Hole Condition: Fair

Reference Elevations: 1987.00 ft (KB)

1977.00 ft (CF)

KB to GR/CF: 10.00 ft

**Serial #: 8792 Outside**

Press@RunDepth: psig @ 4661.00 ft (KB)

Capacity: 8000.00 psig

Start Date: 2019.06.26

End Date:

2019.06.27

Last Calib.: 2019.06.27

Start Time: 18:19:48

End Time:

02:23:27

Time On Btm:

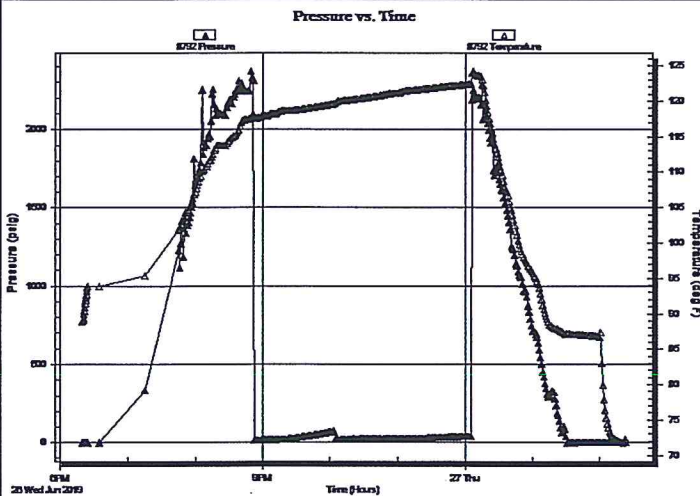
Time Off Btm:

TEST COMMENT: IF: Weak Surface Blow . Built to .10". Died off.

IS: No Blow .

FF: No Blow .

FSI: No Blow .



**PRESSURE SUMMARY**

Time (Min.)	Pressure (psig)	Temp (deg F)	Annotation

**Recovery**

Length (ft)	Description	Volume (bbl)
10.00	DM 100% m	0.08

**Gas Rates**

Choke (inches)	Pressure (psig)	Gas Rate (Mcf/d)



**TRILOBITE  
TESTING, INC.**

## DRILL STEM TEST REPORT

TOOL DIAGRAM

Griffin, Charles N.

28-29s-15w Pratt, KS

PO Box 347  
Pratt, KS 67124

Addie #6

Job Ticket: 64928

DST#: 1

ATTN: Bruce Reed

Test Start: 2019.06.26 @ 18:19:58

### Tool Information

Drill Pipe:	Length: 4539.00 ft	Diameter: 3.80 inches	Volume: 63.67 bbl	Tool Weight: 2100.00 lb
Heavy Wt. Pipe:	Length: 0.00 ft	Diameter: 0.00 inches	Volume: 0.00 bbl	Weight set on Packer: 24000.00 lb
Drill Collar:	Length: 116.00 ft	Diameter: 2.80 inches	Volume: 0.88 bbl	Weight to Pull Loose: 70000.00 lb
			<u>Total Volume: 64.55 bbl</u>	Tool Chased 0.00 ft
Drill Pipe Above KB:	15.00 ft			String Weight: Initial 67000.00 lb
Depth to Top Packer:	4660.00 ft			Final 66000.00 lb
Depth to Bottom Packer:	ft			
Interval between Packers:	30.00 ft			
Tool Length:	50.00 ft			
Number of Packers:	2	Diameter: 6.75 inches		
Tool Comments:				

### Tool Description

Tool Description	Length (ft)	Serial No.	Position	Depth (ft)	Accum. Lengths
Change Over Sub	1.00			4641.00	
Shut In Tool	5.00			4646.00	
Hydraulic tool	5.00			4651.00	
Packer	4.00			4655.00	20.00 Bottom Of Top Packer
Packer	5.00			4660.00	
Stubb	1.00			4661.00	
Recorder	0.00	8931	Inside	4661.00	
Recorder	0.00	8792	Outside	4661.00	
Perforations	26.00			4687.00	
Bullnose	3.00			4690.00	30.00 Bottom Packers & Anchor
<b>Total Tool Length:</b>	<b>50.00</b>				



**TRILOBITE  
TESTING, INC.**

**DRILL STEM TEST REPORT**

**FLUID SUMMARY**

Griffin, Charles N.

28-29s-15w Pratt,KS

PO Box 347  
Pratt, KS 67124

Addie #6

Job Ticket: 64928

DST#: 1

ATTN: Bruce Reed

Test Start: 2019.06.26 @ 18:19:58

**Mud and Cushion Information**

Mud Type: Gel Chem

Cushion Type:

Oil API:

deg API

Mud Weight: 9.00 lb/gal

Cushion Length:

ft

Water Salinity:

6000 ppm

Viscosity: 52.00 sec/qt

Cushion Volume:

bbl

Water Loss: 8.79 in<sup>3</sup>

Gas Cushion Type:

Resistivity: 6000.00 ohm.m

Gas Cushion Pressure:

psig

Salinity: ppm

Filter Cake: 0.20 inches

**Recovery Information**

Recovery Table

Length ft	Description	Volume bbl
10.00	DM 100% m	0.076

Total Length: 10.00 ft Total Volume: 0.076 bbl

Num Fluid Samples: 0

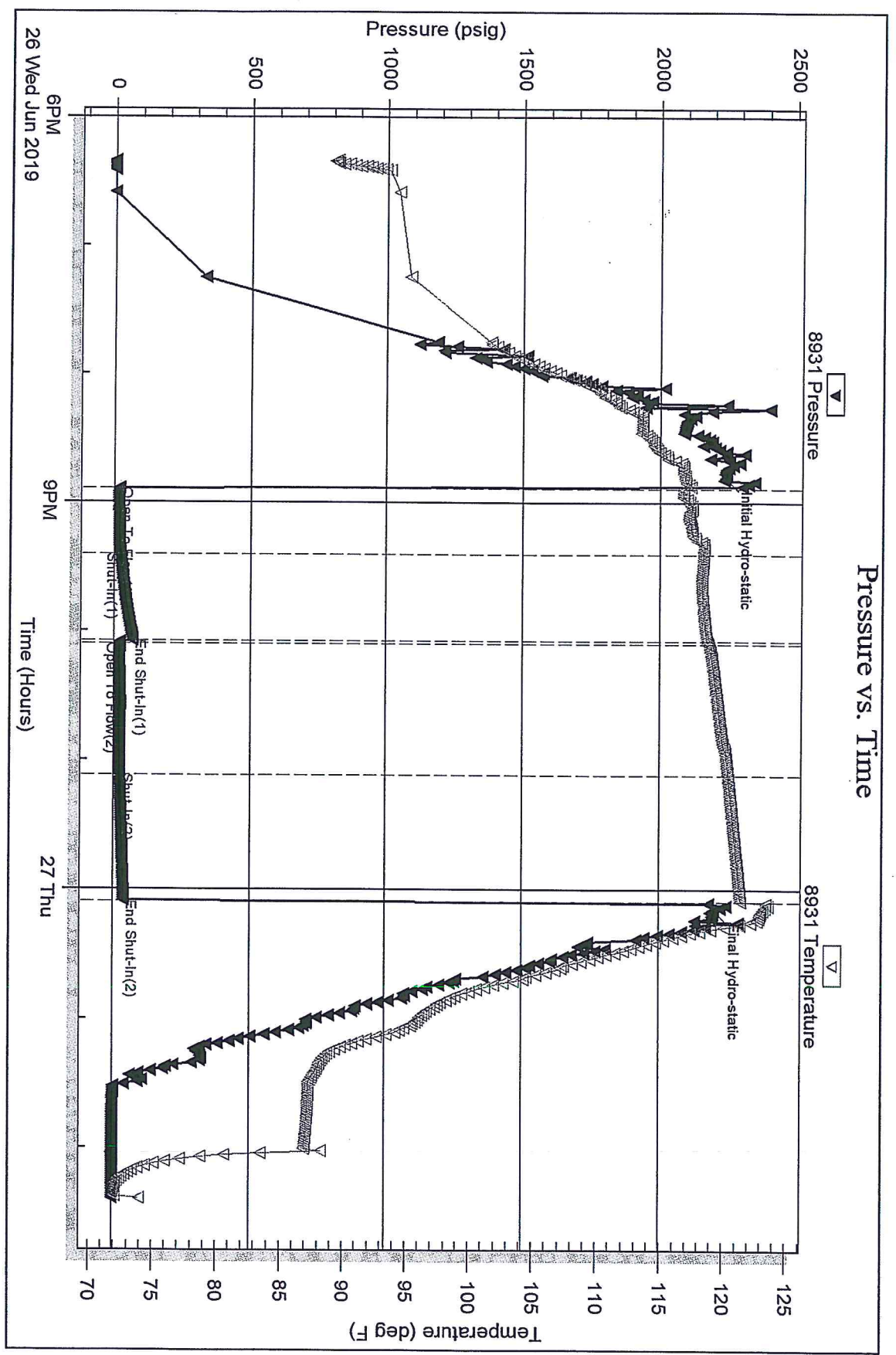
Num Gas Bombs: 0

Serial #: None

Laboratory Name:

Laboratory Location:

Recovery Comments: 10 FT Drilling Mud

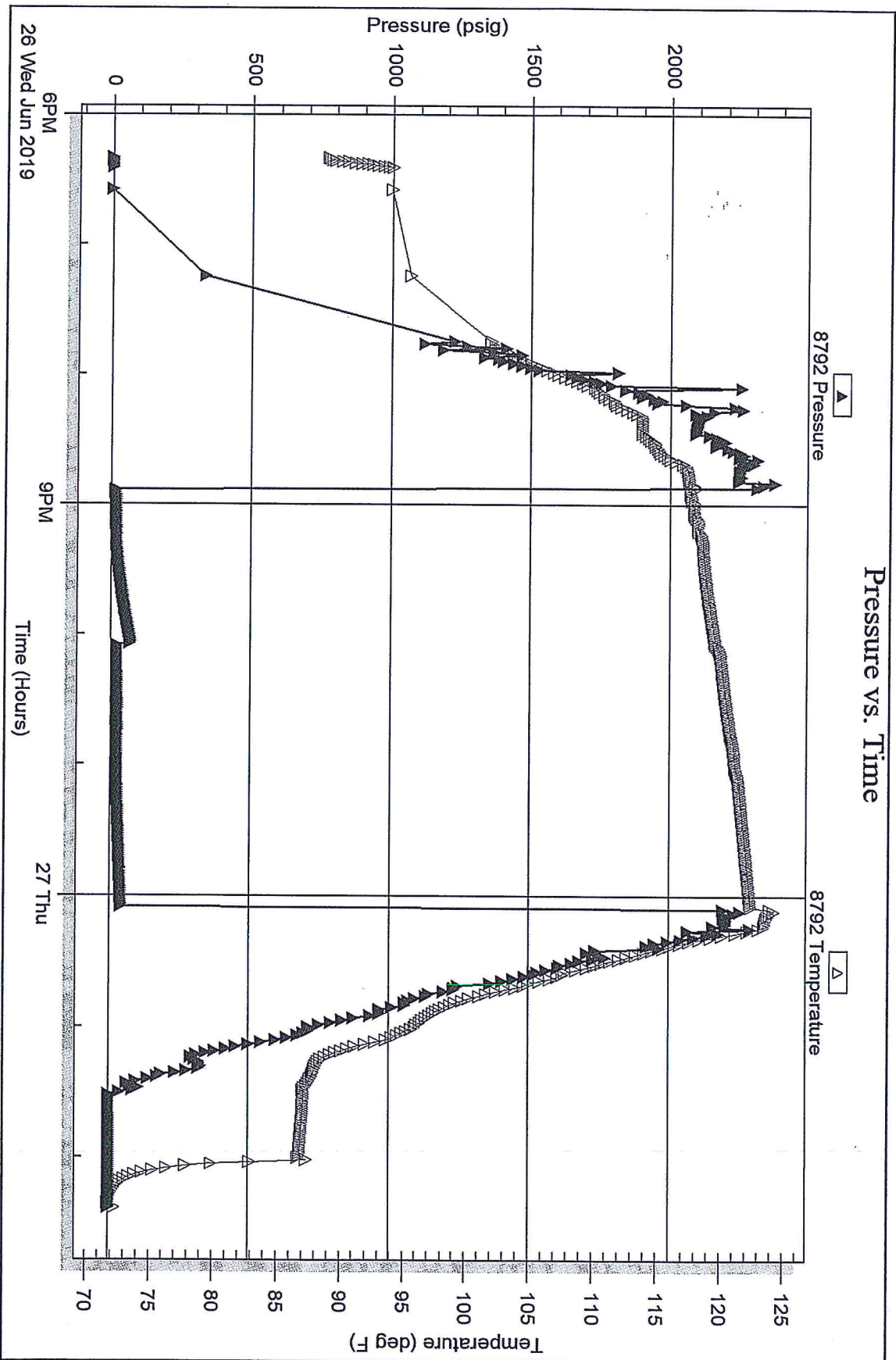


Serial #: 8792

Outside Griffin, Charles N

Addie #6

DST Test Number: 1





# TRILOBITE TESTING INC.

1515 Commerce Parkway • Hays, Kansas 67601

## Test Ticket

NO. 64928

Well Name & No. Addic #6 Test No. 1 Date 6/26/19  
 Company Griffen, Charles N. Elevation 1987 KB 1977 GL  
 Address P.O. Box 347 Pratt, Ks. 67124  
 Co. Rep / Geo. Bruce Reed Rig WW14  
 Location: Sec. 28 Twp 29S Rge. 15W Co. PRATT State KS.

Interval Tested 4660 - 4690 Zone Tested Utiola  
 Anchor Length 30' Drill Pipe Run 4539 Mud Wt. 9.3+  
 Top Packer Depth 4655 Drill Collars Run 116 Vis 52  
 Bottom Packer Depth 4660 Wt. Pipe Run Q WL 8.8  
 Total Depth 4690 Chlorides 6000 ppm System LCM 2 1/2"

Blow Description IF: Weak Surface blow. Built to .10", DIED out.

ISI: No blow.

FF: No blow.

FSI: No blow.

Rec	Feet of	%gas	%oil	%water	%mud
<u>10</u>	<u>Drig Mud</u>				<u>100</u>
Rec	Feet of	%gas	%oil	%water	%mud
Rec	Feet of	%gas	%oil	%water	%mud
Rec	Feet of	%gas	%oil	%water	%mud
Rec	Feet of	%gas	%oil	%water	%mud

Rec Total 10' Fluid BHT Gravity N/A API RW N/A @ — °F Chlorides 6000 ppm

- (A) Initial Hydrostatic 2242
- (B) First Initial Flow 18
- (C) First Final Flow 22
- (D) Initial Shut-In 68
- (E) Second Initial Flow 21
- (F) Second Final Flow 22
- (G) Final Shut-In 39
- (H) Final Hydrostatic 2204

- Test 1300
- Jars
- Safety Joint
- Circ Sub
- Hourly Standby
- Mileage (58) x 2 52+52
- Sampler
- Straddle
- Shale Packer
- Extra Packer
- Extra Recorder
- Day Standby
- Accessibility
- Sub Total 1404

- T-On Location 1738
- T-Started 1819
- T-Open 2053
- T-Pulled 0010
- T-Out 0223

Comments 6/27/19 - 16:45 on location P.U.T.T.

Initial Open 30  
 Initial Shut-In 45  
 Final Flow 60  
 Final Shut-In 60

- EM Tool
- Ruined Shale Packer
- Ruined Packer
- Extra Copies
- Sub Total 0
- Total 1404

Approved By [Signature]

Our Representative [Signature]

Triobite Testing Inc. shall not be liable for damaged of any kind of the property or personnel of the one for whom a test is made, or for any loss suffered or sustained, directly or indirectly, through the use of equipment, or its statements or opinion concerning the results of any test, tools lost or damaged in the hole shall be paid for at cost by the party for whom the test is made.



CamScanner