

**TRILOBITE  
TESTING, INC.**

# DRILL STEM TEST REPORT

Daystar Petroleum, Inc.

16 22s 33w Finney, Ks

PO Box 560  
Eureka, Ks 67045

**Graves #3**

Job Ticket: 64371

DST#: 2

ATTN: Jon Christensen

Test Start: 2019.08.05 @ 12:54:00

## GENERAL INFORMATION:

Formation: **Marmaton**

Deviated: No Whipstock: ft (KB)

Time Tool Opened: 15:31:00

Time Test Ended: 21:51:15

Test Type: Conventional Bottom Hole (Reset)

Tester: Bradley Walter

Unit No: 78

Interval: **4314.00 ft (KB) To 4353.00 ft (KB) (TVD)**

Total Depth: 4353.00 ft (KB) (TVD)

Hole Diameter: 7.88 inches Hole Condition: Good

Reference Elevations: 2882.00 ft (KB)

2871.00 ft (CF)

KB to GR/CF: 11.00 ft

**Serial #: 8522**

Inside

Press@RunDepth: 68.63 psig @ 4315.00 ft (KB)

Start Date: 2019.08.05

End Date:

2019.08.05

Start Time: 12:54:00

End Time:

21:51:15

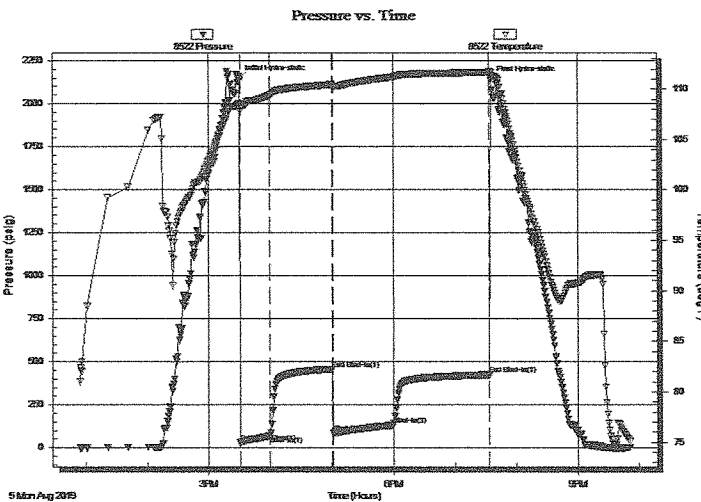
Capacity: 8000.00 psig

Last Calib.: 2019.08.05

Time On Btm: 2019.08.05 @ 15:30:30

Time Off Btm: 2019.08.05 @ 19:35:00

**TEST COMMENT:** 30- IF: 5 1/2" blow.  
60- IS: No return.  
60- FF: 4" blow.  
90- FSI: No return.



## PRESSURE SUMMARY

| Time (Min.) | Pressure (psig) | Temp (deg F) | Annotation           |
|-------------|-----------------|--------------|----------------------|
| 0           | 2141.77         | 108.55       | Initial Hydro-static |
| 1           | 27.68           | 107.76       | Open To Flow (1)     |
| 30          | 68.63           | 109.40       | Shut-In(1)           |
| 90          | 457.23          | 110.46       | End Shut-In(1)       |
| 91          | 87.14           | 110.20       | Shut-In(2)           |
| 150         | 130.60          | 111.20       | Shut-In(3)           |
| 243         | 425.02          | 111.70       | End Shut-In(2)       |
| 245         | 2136.83         | 111.61       | Final Hydro-static   |

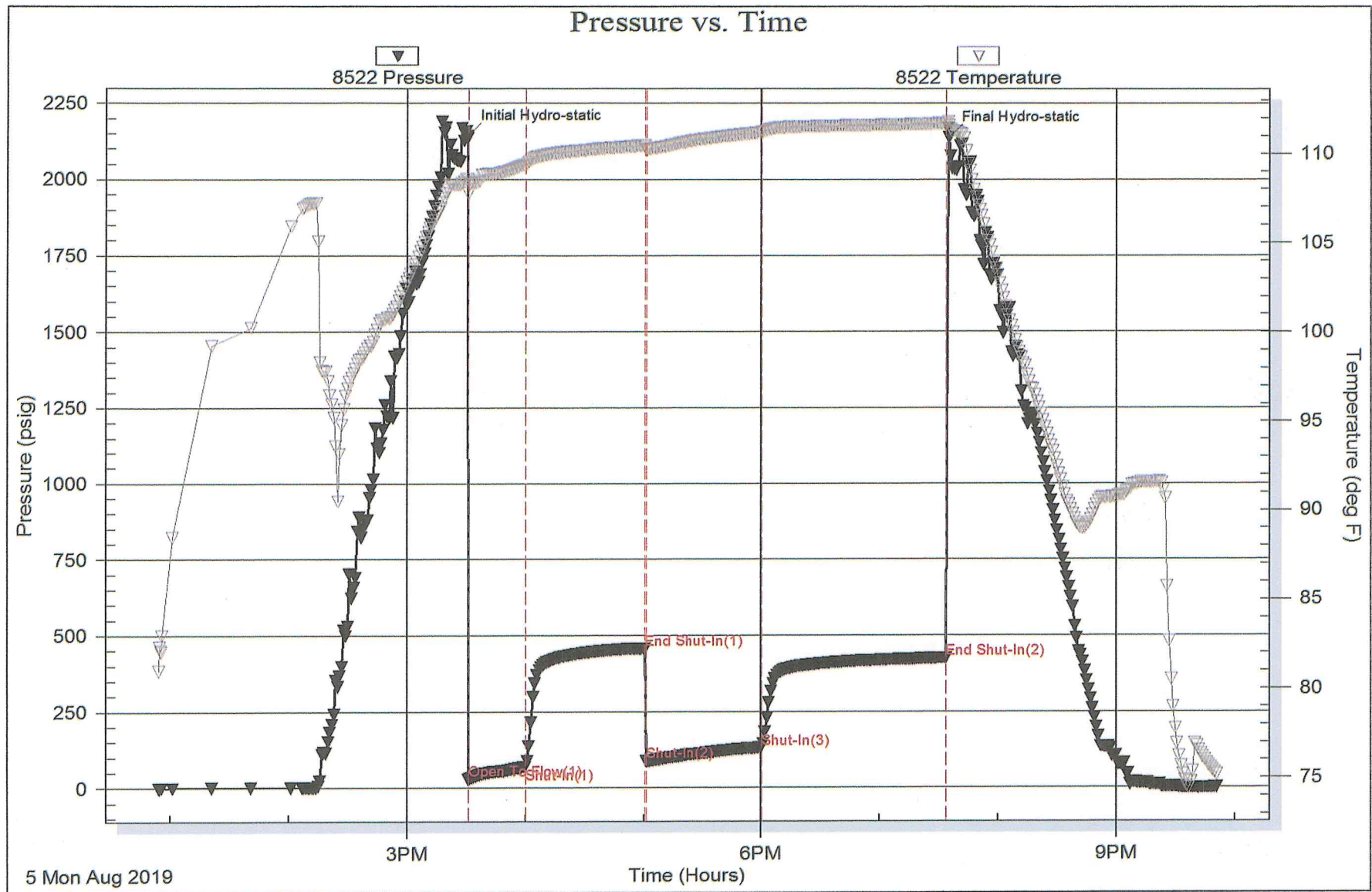
## Recovery

| Length (ft) | Description             | Volume (bbl) |
|-------------|-------------------------|--------------|
| 125.00      | mcw 35m 65w (oil spots) | 0.61         |
| 120.00      | omcw 10o 40m 50w        | 0.59         |
| 5.00        | oil 100 oil             | 0.07         |
|             |                         |              |
|             |                         |              |

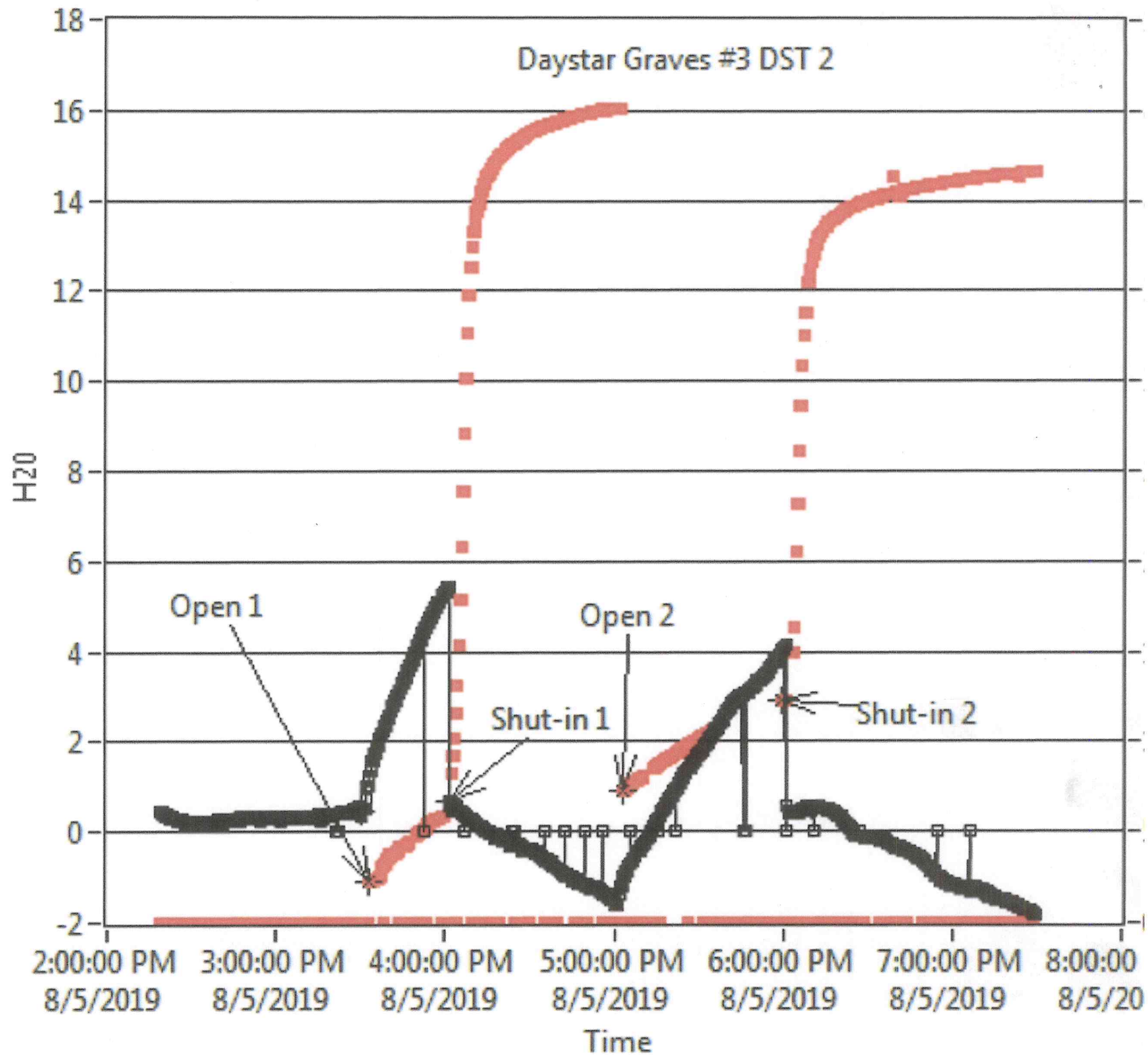
\* Recovery from multiple tests

## Gas Rates

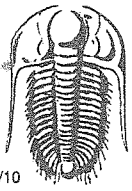
|  | Choke (inches) | Pressure (psig) | Gas Rate (Mcf/d) |
|--|----------------|-----------------|------------------|
|  |                |                 |                  |



# Daystar Graves #3 DST 2



A vertical legend on the left side of the graph contains ten entries, each with a small icon and a corresponding color. From top to bottom, the entries are: a black line with a square, a red dashed line with a square, a green line with a square, a blue line with a square, a yellow line with a square, a purple line with a square, an orange line with a square, a dark blue line with a square, a light blue line with a square, and a pink line with a square.



# TRILOBITE TESTING INC.

1515 Commerce Parkway • Hays, Kansas 67601

## Test Ticket

NO. 64371

Well Name & No. Graves #3 Test No. 2 Date 8/05/2019  
 Company Daystar Petroleum, Inc Elevation 2882 KB 2871 GL  
 Address PO Box 560 Eureka, KS 67045  
 Co. Rep / Geo. Jon Christensen Rig Murfin 21  
 Location: Sec. 16 Twp. 22s Rge. 33w Co. Finney State Ks

Interval Tested 4314 - 4353 Zone Tested Marmaton  
 Anchor Length 39' Drill Pipe Run 4052 Mud Wt. 9.1  
 Top Packer Depth 4309 Drill Collars Run 245 Vis 50  
 Bottom Packer Depth 4314 Wt. Pipe Run Ø WL 9.2  
 Total Depth 4353 Chlorides 3150 ppm System LCM 4#

Blow Description IF: 5 1/2" blow.  
ISI: No return.  
FF: 4" blow  
FSI: No return.

| Rec        | Feet of              | %gas       | %oil      | %water    | %mud |
|------------|----------------------|------------|-----------|-----------|------|
| <u>5</u>   | <u>oil</u>           | <u>100</u> |           |           |      |
| <u>120</u> | <u>omcw</u>          | <u>10</u>  | <u>50</u> | <u>40</u> |      |
| <u>125</u> | <u>mcw oil spots</u> |            | <u>65</u> | <u>35</u> |      |
|            |                      |            |           |           |      |
|            |                      |            |           |           |      |

Rec Total 250 BHT 112 Gravity 32 API RW @ ° F Chlorides ppm

(A) Initial Hydrostatic 2142  Test 1200 T-On Location  
 (B) First Initial Flow 28  Jars 1254 T-Started  
 (C) First Final Flow 69  Safety Joint 1500 T-Open  
 (D) Initial Shut-In 457  Circ Sub 1930 T-Pulled  
 (E) Second Initial Flow 87  Hourly Standby 2151 T-Out  
 (F) Second Final Flow 131  Mileage 60 RT Comments  
 (G) Final Shut-In 425  EM Sampler  
 (H) Final Hydrostatic 2137  Straddle  Ruined Shale Packer  
 Shale Packer  Ruined Packer  
 Extra Packer  Extra Copies  
 Extra Recorder Sub Total  
 Day Standby Total  
 Accessibility MP/DST Disc't  
 Sub Total

Initial Open 30  
 Initial Shut-In 60  
 Final Flow 60  
 Final Shut-In 90

Approved By \_\_\_\_\_ Our Representative [Signature]

TriLOBite Testing Inc. shall not be liable for damaged of any kind of the property or personnel of the one for whom a test is made, or for any loss suffered or sustained, directly or indirectly, through the use of its equipment, or its statements or opinion concerning the results of any test, tools lost or damaged in the hole shall be paid for at cost by the party for whom the test is made.